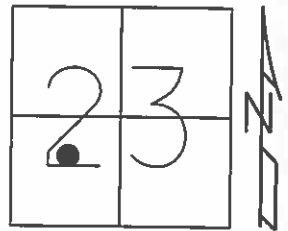


O.D.O.T. DISTRICT 2 SURVEY OFFICE (USE ONLY)

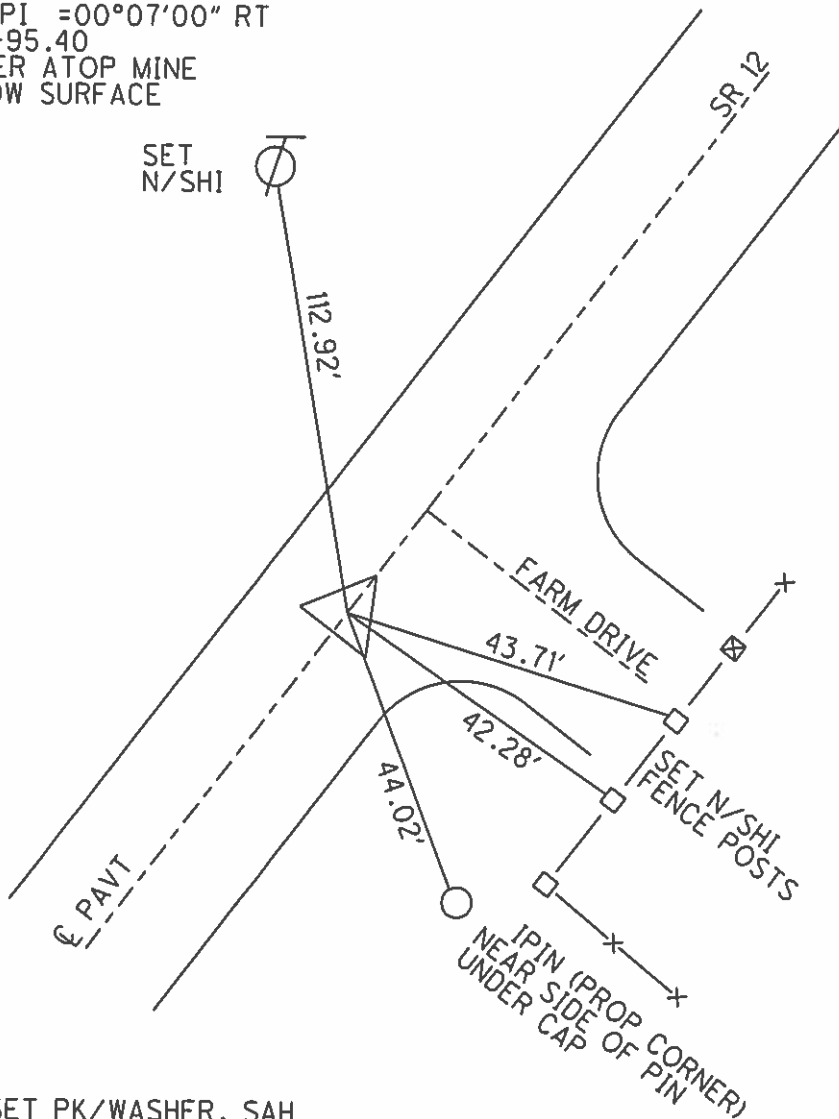
PERSONNEL _____ REFERENCE NO. 20 SHEET 22 OF 70
 NOTES LOEHRKE DATE 05-21-12 ROUTE SR 12
 H.C. ROUSOS WEATHER CLEAR COUNTY SENECA
 R.C. LOEHRKE TEMP. 82° TOWNSHIP JACKSON
 _____ SECTION 23
 _____ T 3 N R 13 E

TYPE MONUMENT _____ PK/WASHER _____
 ON SURFACE - BELOW _____ ON _____
 LEFT - ϕ PAV'T - RIGHT _____ 0.4' _____
10.0' TO RT. EDGE PAVEMENT
 S.L.M. _____ 321+60



GRID: NORTHING: 560175.971 EASTING: 1737786.766

RECORD: PI = 00°07'00" RT
 SRA 305+95.40
 PK/WASHER ATOP MINE
 SPK BELOW SURFACE



10-14-99 SET PK/WASHER, SAH
 11-15-12 SET MAG/WASHER, SDC
 11-15-12 GPS NEWREF20, SDC

O.D.O.T. DISTRICT 2 SURVEY OFFICE

PERSONNEL

REFERENCE NO. 20

SHEET 15 OF 52

NOTES Lochrke

H.C. Rousos

R.C. Lochrke

DATE 8-19-99

WEATHER Rain

TEMP. +70°F

ROUTE 12

COUNTY Seneca

TOWNSHIP Jackson

SECTION 23

T 3 N R 13 E

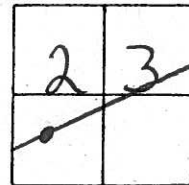
TYPE MONUMENT PK/w

ON SURFACE ~~PAV'T.~~ Surface

~~PAV'T.~~ & Pav.

12.1 TO Rt. EDGE PAVEMENT

S.L.M. 321+60



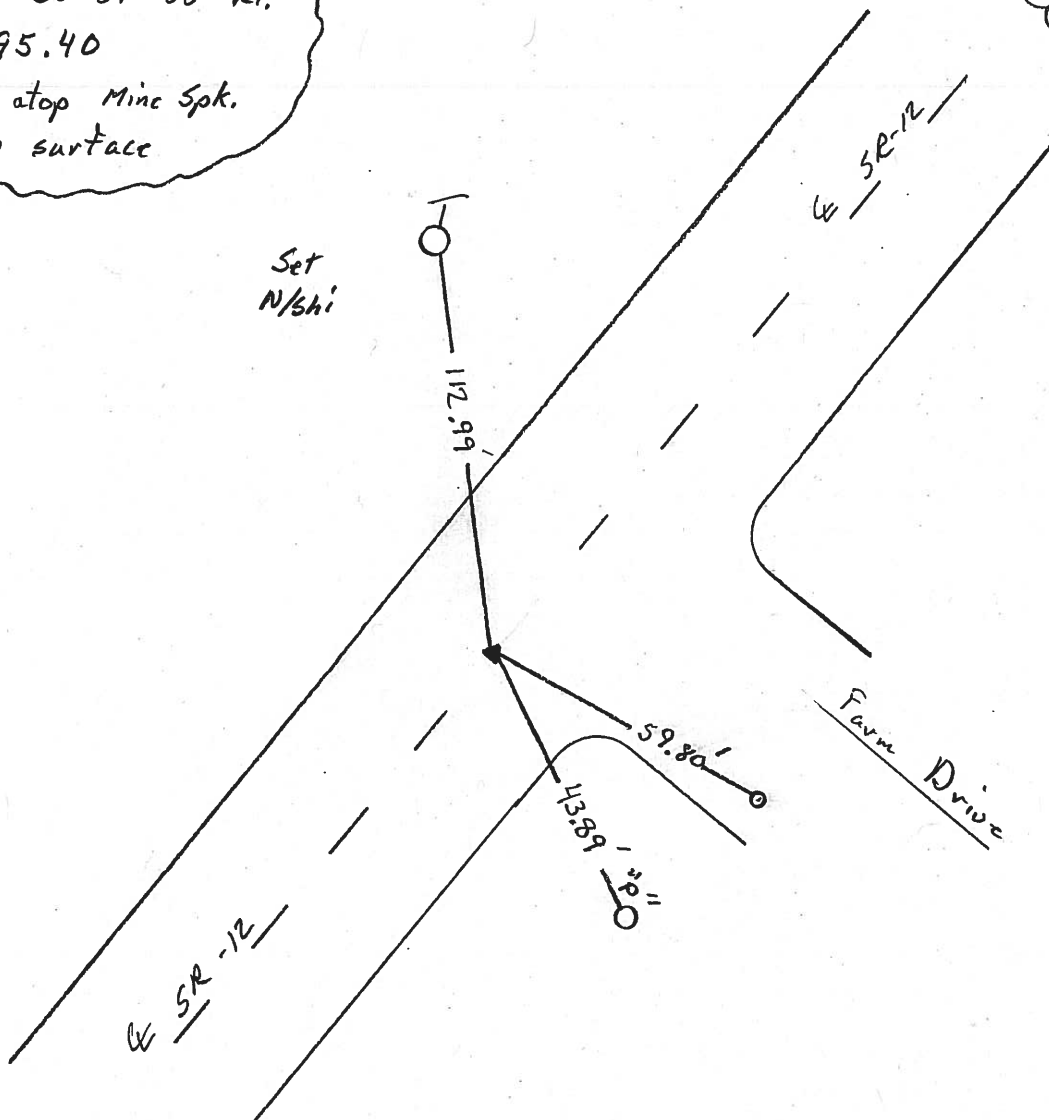
Record :

$PI - \Delta = 00^{\circ} - 07' - 00''$ Rt.

3057 95.40

PK/w atop Mine Spk.
below surface

Set PK/w
10-14-99
SAH



O.D.O.T. DISTRICT 2 SURVEY OFFICE

PERSONNEL

NOTES Cronin

H.C. Ripple

R.C. Geyman

Barbour

REFERENCE NO. 20

DRAWN 1/27/87

DATE 5/06/87

WEATHER sunny

TEMP. 58°

SHEET 19 OF

ROUTE #12

COUNTY Seneca

TOWNSHIP Jackson

SECTION 23

T3 N R 13 E

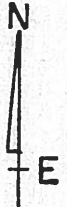
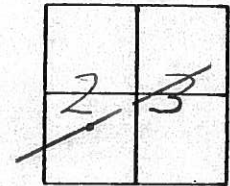
TYPE MONUMENT P.K. & washer

ON SURFACE - BELOW below surface

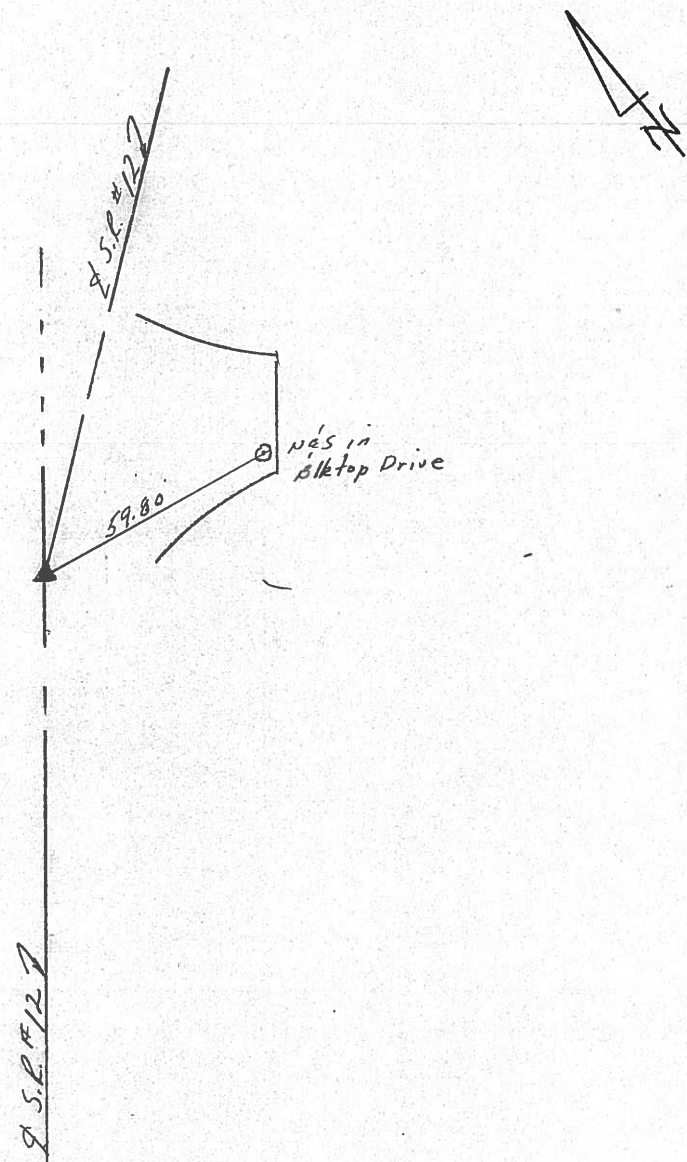
LEFT - € PAV'T. - RIGHT € Pavt

 TO EDGE PAVEMENT

S.L.M.



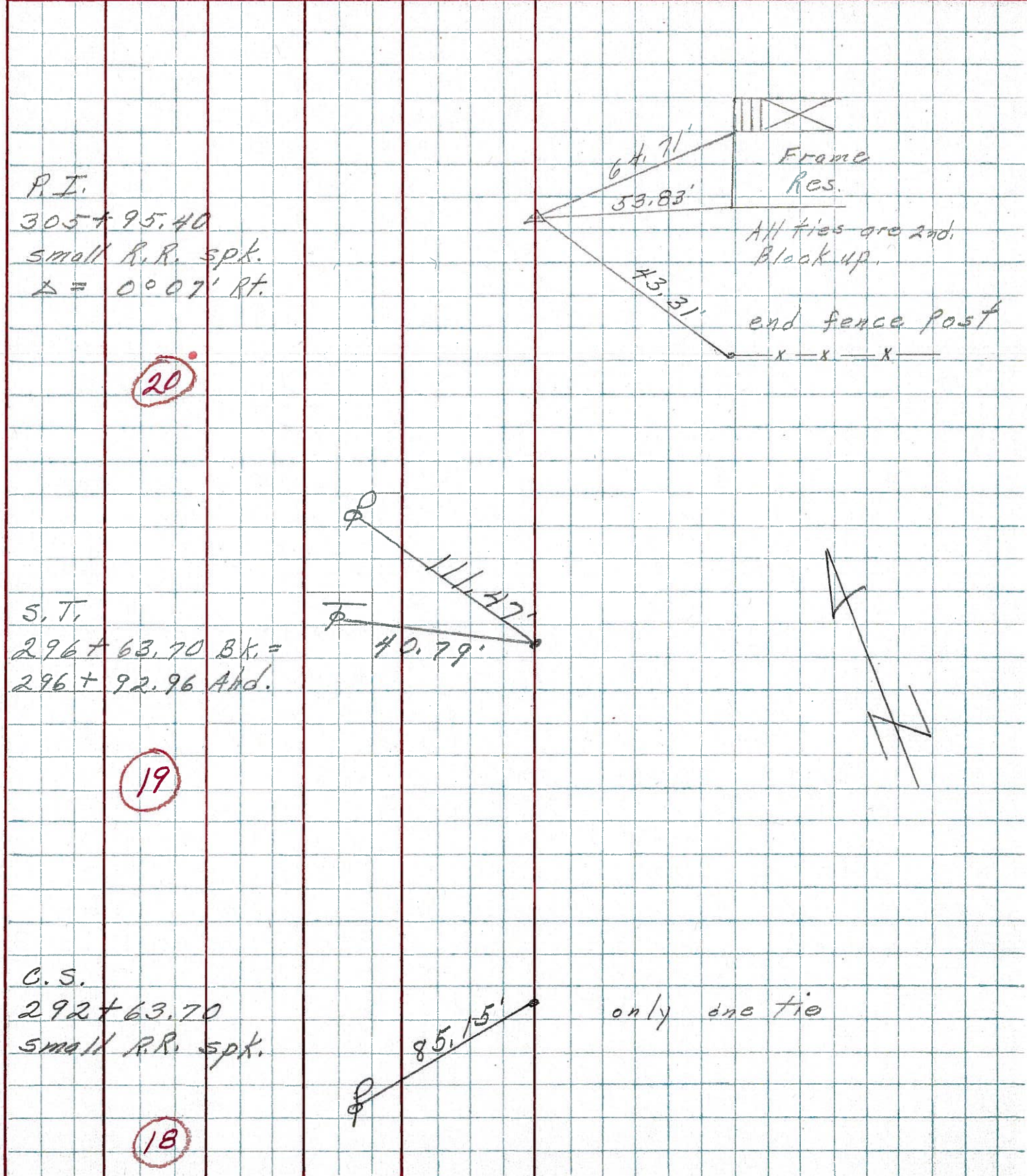
P.I.
A = 00° 07' 00" Rt. Rec.
305.495.40
P.K. & washer atop mine
spike - below surface



PERSONNEL	TITLE	PERSONNEL	TITLE

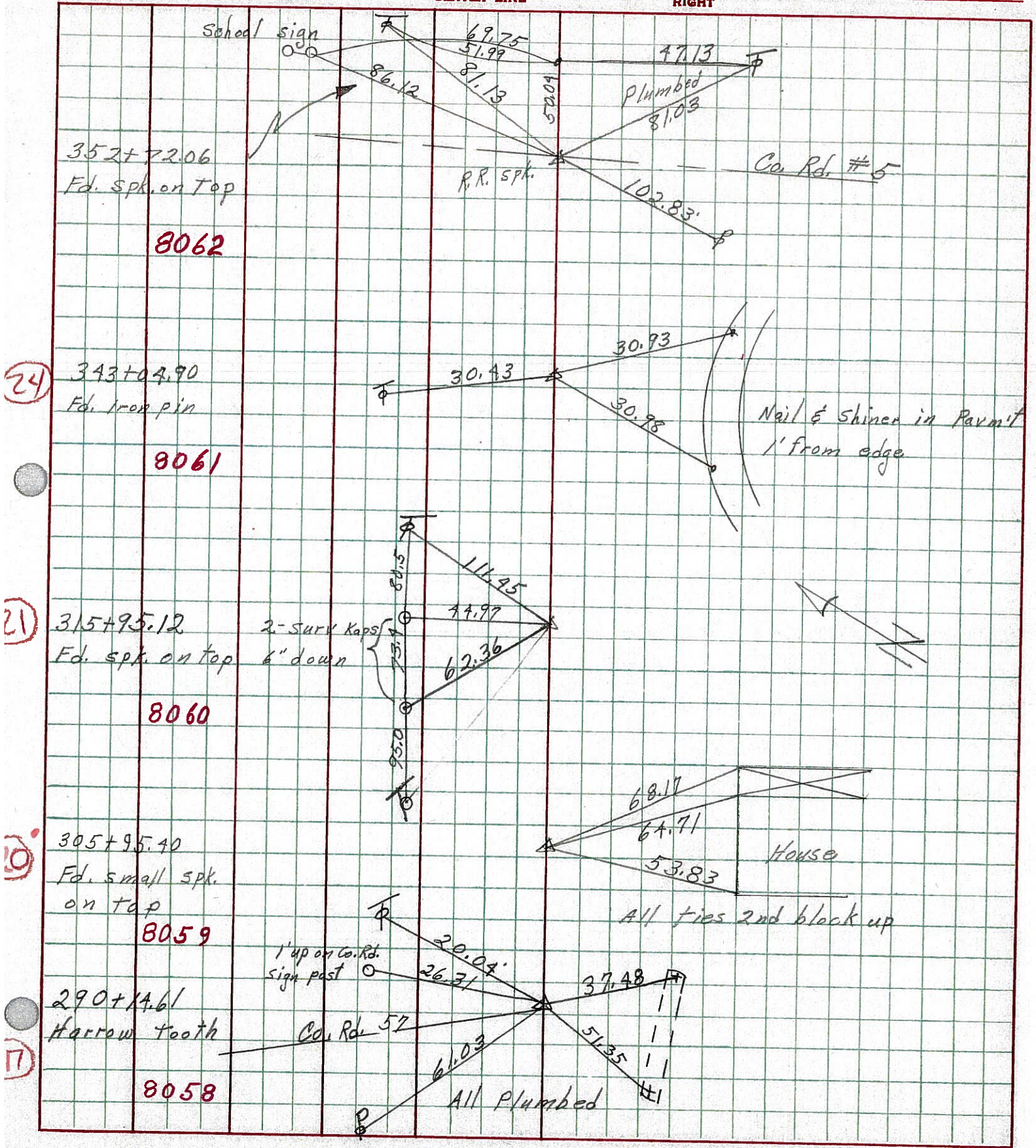
COUNTY Seneca DATE 10-16-72
 S. R. 12 WEATHER cool
 SEC. 23 Jackson Twp. TEMP 40°

DESCRIPTION Fostoria to Sandusky Co. Line JOB NO. _____



PERSONNEL TITLE PERSONNEL TITLE COUNTY Seneca DATE 10-9-68
 Schneider _____
 Barbour _____
 Redding _____
 Potts _____
 S. R. 12 WEATHER Fair
 SEC. Fostoria to San. Co. Line TEMP. 70°

DESCRIPTION Tie for Control Points LEFT CENTER LINE RIGHT JOB NO.



24

21

19

17

PERSONNEL TITLE PERSONNEL TITLE

COUNTY Seneca DATE

S. R. 12-113 WEATHER

SEC. _____ TEMP. _____

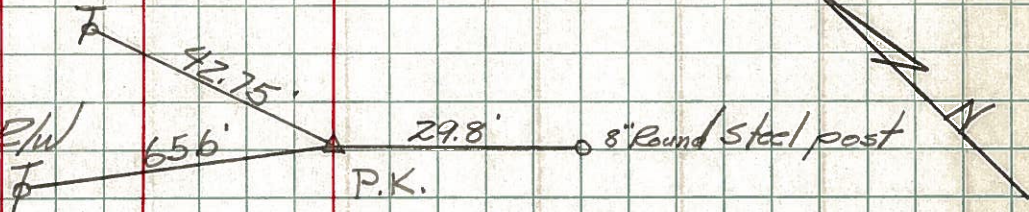
DESCRIPTION LEFT CENTER LINE RIGHT JOB NO.

Sta. 171+26.99

P.T.

Iron pin on $\frac{1}{2}$ of R/W

#426

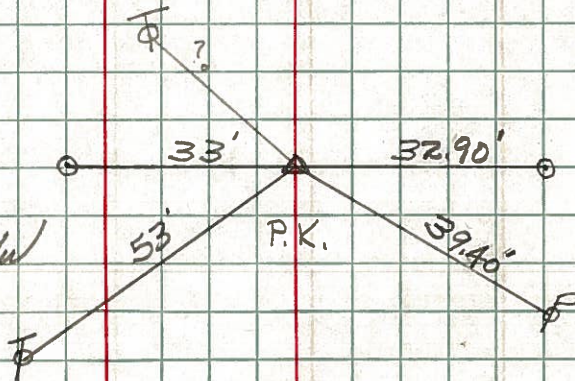


Sta. 199+93.44

P.C.

Iron pin on $\frac{1}{2}$ of R/W

#427



Sta. 202+25.31

P.I.

Iron pin on $\frac{1}{2}$ of R/W

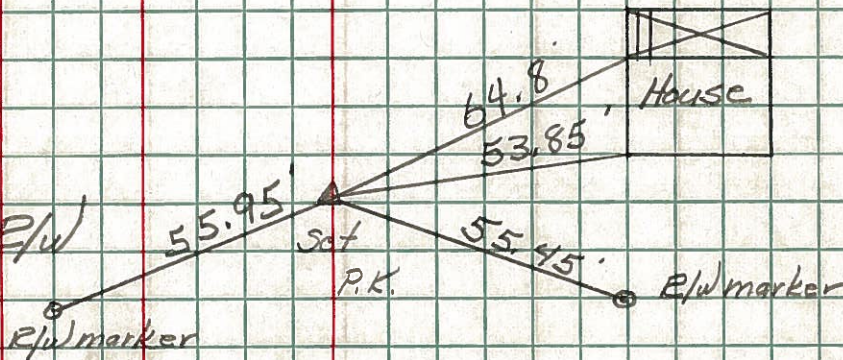
#428



Sta. 216+96

Iron pin on $\frac{1}{2}$ of R/W

#429



Sta. 226+96

Iron pin on $\frac{1}{2}$ of R/W

#430

