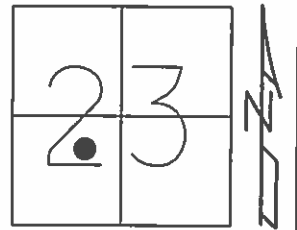


O.D.O.T. DISTRICT 2 SURVEY OFFICE (USE ONLY)

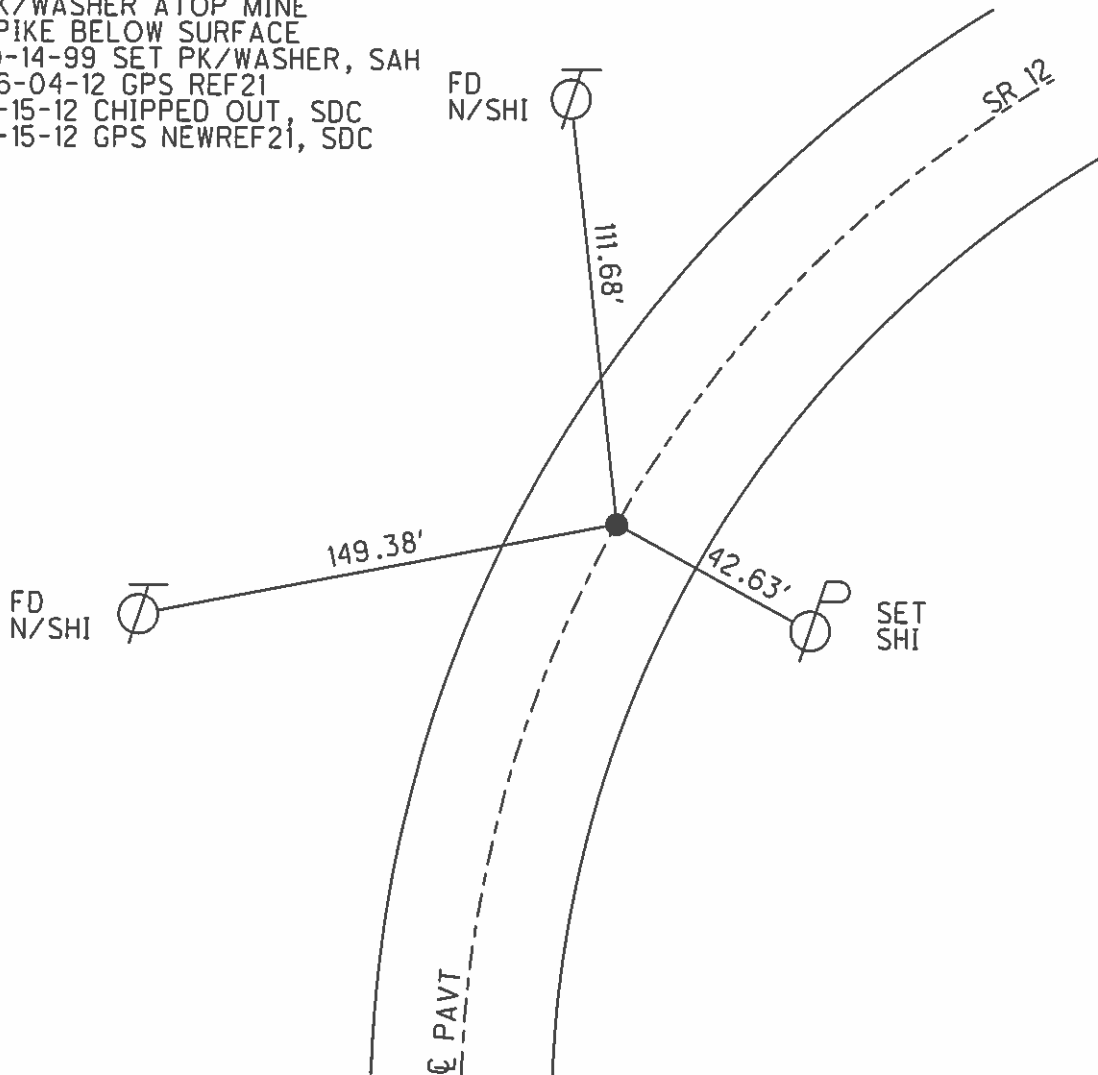
PERSONNEL \_\_\_\_\_ REFERENCE NO. 21 SHEET 23 OF 70  
 NOTES HUSS DATE 05-21-12 ROUTE SR 12  
 H.C. HUSS WEATHER CLEAR COUNTY SENECA  
 R.C. CANTERBURY TEMP. 82° TOWNSHIP JACKSON  
 \_\_\_\_\_ SECTION 23  
 \_\_\_\_\_ T 3 N R 13 E

TYPE MONUMENT \_\_\_\_\_ PK/WASHER \_\_\_\_\_  
 ON SURFACE - BELOW \_\_\_\_\_ ON \_\_\_\_\_  
 LEFT - Q PAV'T - RIGHT \_\_\_\_\_ ON \_\_\_\_\_  
12.7' TO RT EDGE PAVEMENT  
 S.L.M. \_\_\_\_\_ 331+63



GRID: NORTHING: 560629.432 EASTING: 1738677.149

RECORD:  
 P.I. 315+95.12  
 PK/WASHER ATOP MINE  
 SPIKE BELOW SURFACE  
 10-14-99 SET PK/WASHER, SAH  
 06-04-12 GPS REF21  
 11-15-12 CHIPPED OUT, SDC  
 11-15-12 GPS NEWREF21, SDC



# O.D.O.T. DISTRICT 2 SURVEY OFFICE

PERSONNEL

REFERENCE NO. 21

SHEET 16 OF 52

NOTES Canterbury

H.C. Rousos

R.C. Barnhisel

DATE 8-19-99

WEATHER Overcast

TEMP. +72°F

ROUTE 12

COUNTY Seneca

TOWNSHIP Jackson

SECTION 23

T 3 N R 13 E

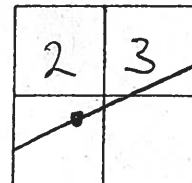
TYPE MONUMENT Pk/w

ON SURFACE - BELOW Surface

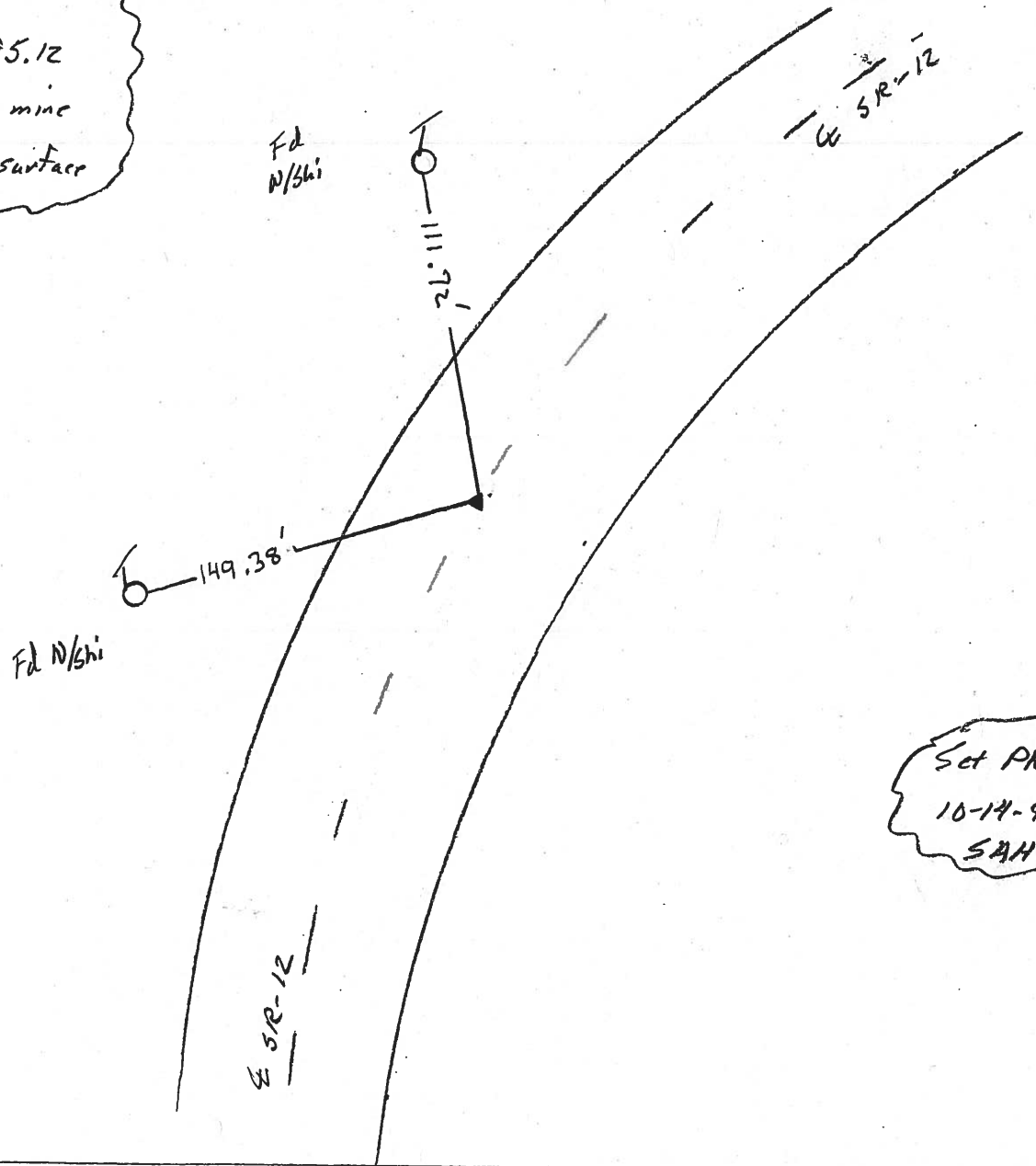
~~PAV'T~~ - PAV'T - ~~PAV'T~~ & Pavc

12.7 TO Rt. EDGE PAVEMENT

S.L.M. 331+63



*Record*  
 P.I. 315+95.12  
 PK/w atop mine  
 spike below surface



Set PK/w  
 10-14-99  
 SAH

O.D.O.T. DISTRICT 2 SURVEY OFFICE

PERSONNEL

NOTES Cronin

H.C. Ripple

R.C. Geyman

Barbour

REFERENCE NO. 21

DRAWN 1/27/87

DATE 5/06/87

WEATHER sunny

TEMP. 58°

SHEET 20 OF     

ROUTE #12

COUNTY Seneca

TOWNSHIP Jackson

SECTION 23

T 3 N R 13 E

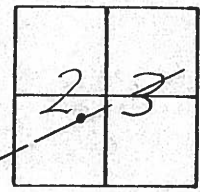
TYPE MONUMENT P.K. & washer

ON SURFACE - BELOW Below surface

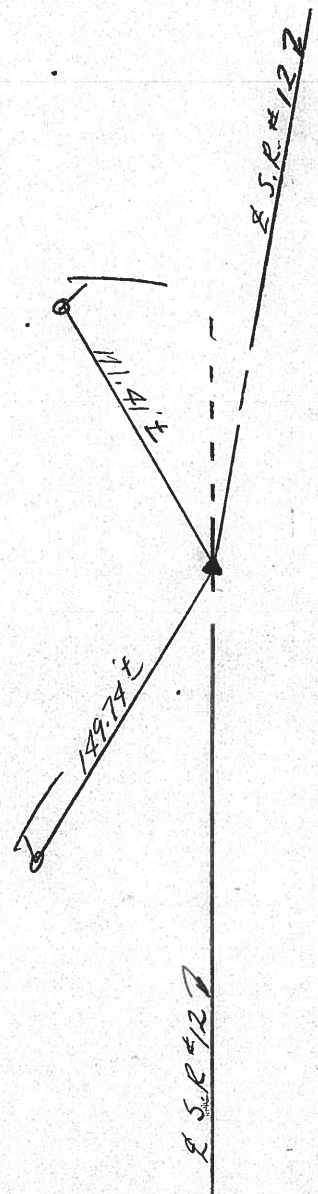
LEFT - CL PAV'T. - RIGHT & Pav't.

     TO      EDGE PAVEMENT

S.L.M.     



P.I.  
315+95.12  
P.K. & washer atop mine  
spike below surface



PERSONNEL TITLE PERSONNEL TITLE

COUNTY Seneca DATE 10-17-72

S. R. 12 WEATHER Fair

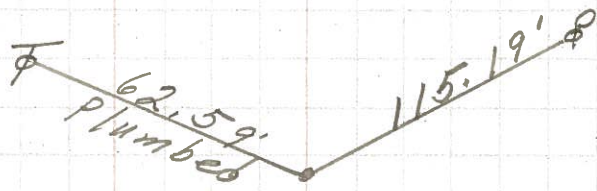
SEC. 23 Jackson Twp. TEMP. 50°

DESCRIPTION Fostoria to Sandusky Co. Line JOB NO. \_\_\_\_\_

LEFT CENTER LINE RIGHT

S. C.  
342+66.91  
small R.R. spk.

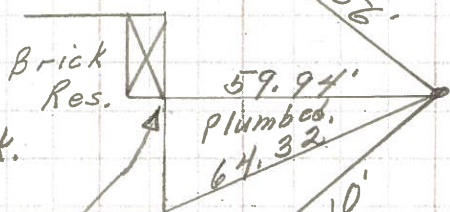
23



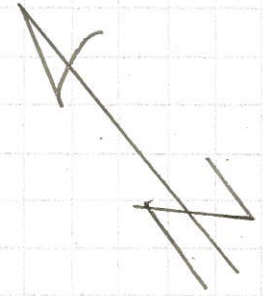
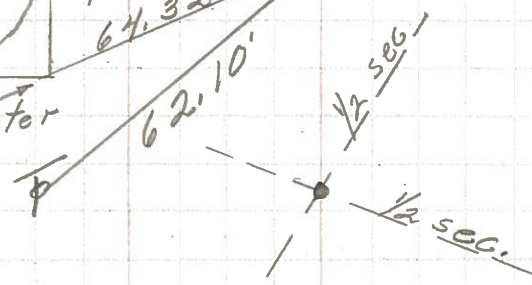
T. S.  
338+66.91  
small R.R. spk.

22

Top at water table

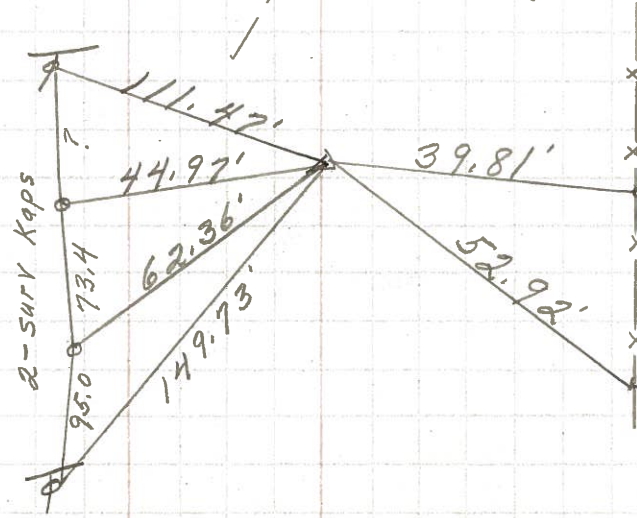


322+52.82  
Sec Lines



P. I.  
315+95.12  
Fd. small  
R.R. spk.  
on & Rlw  
 $\Delta = 0^{\circ}04' RT.$

21



Loose steel fence posts

PERSONNEL TITLE PERSONNEL TITLE

Schneider  
Barbour  
Redding  
Potts

COUNTY Seneca DATE 10-9-68

S. R. 12 WEATHER Fair

SEC. Fosteria to Sen. Co. Line TEMP. 70°

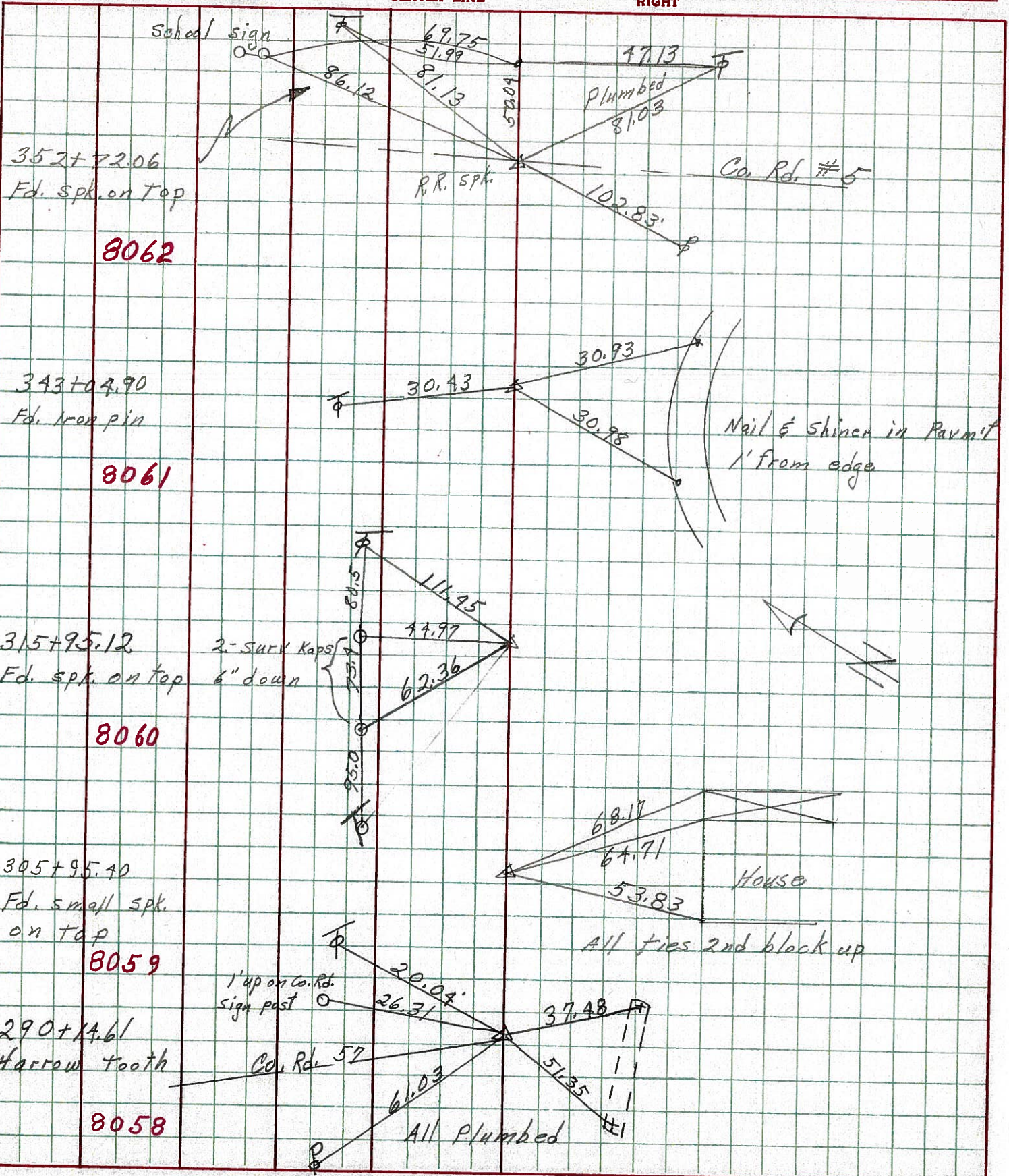
DESCRIPTION Tie for Control Points

LEFT

CENTER LINE

RIGHT

JOB NO.



24

21

9

7

PERSONNEL TITLE PERSONNEL TITLE

COUNTY Seneca DATE

S. R. 12-113 WEATHER

SEC. \_\_\_\_\_ TEMP. \_\_\_\_\_

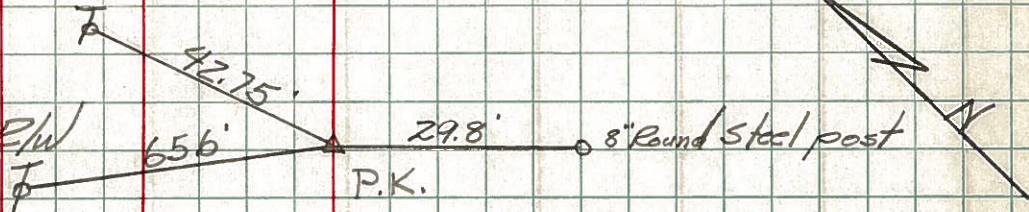
DESCRIPTION LEFT CENTER LINE RIGHT JOB NO.

Sta. 171+26.99

P.T.

Iron pin on  $\frac{1}{2}$  of R/W

#426

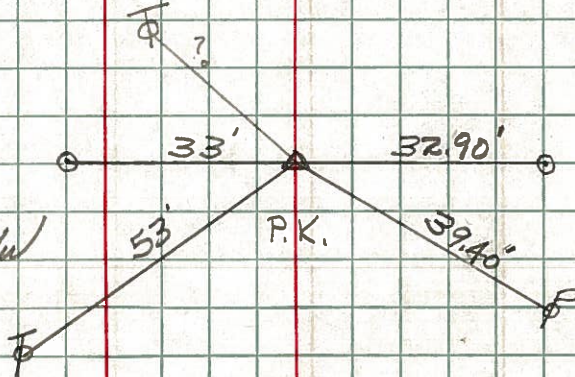


Sta. 199+93.44

P.C.

Iron pin on  $\frac{1}{2}$  of R/W

#427



Sta. 202+25.31

P.I.

Iron pin on  $\frac{1}{2}$  of R/W

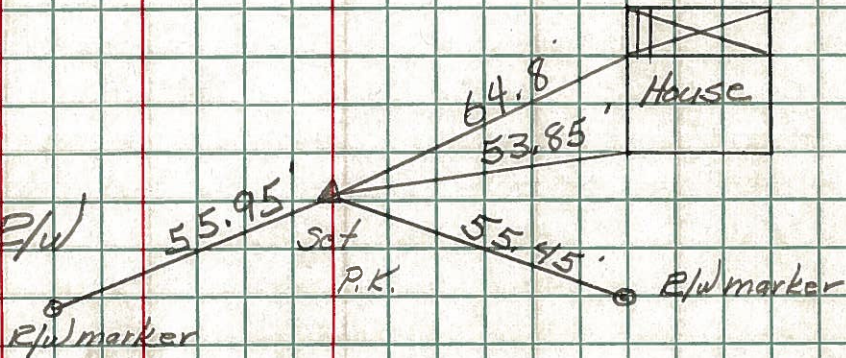
#428



Sta. 216+96

Iron pin on  $\frac{1}{2}$  of R/W

#429



Sta. 226+96

Iron pin on  $\frac{1}{2}$  of R/W

#430

