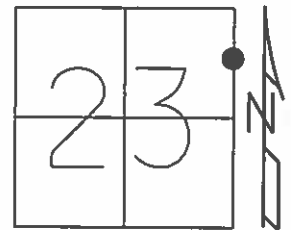


O.D.O.T. DISTRICT 2 SURVEY OFFICE (USE ONLY)

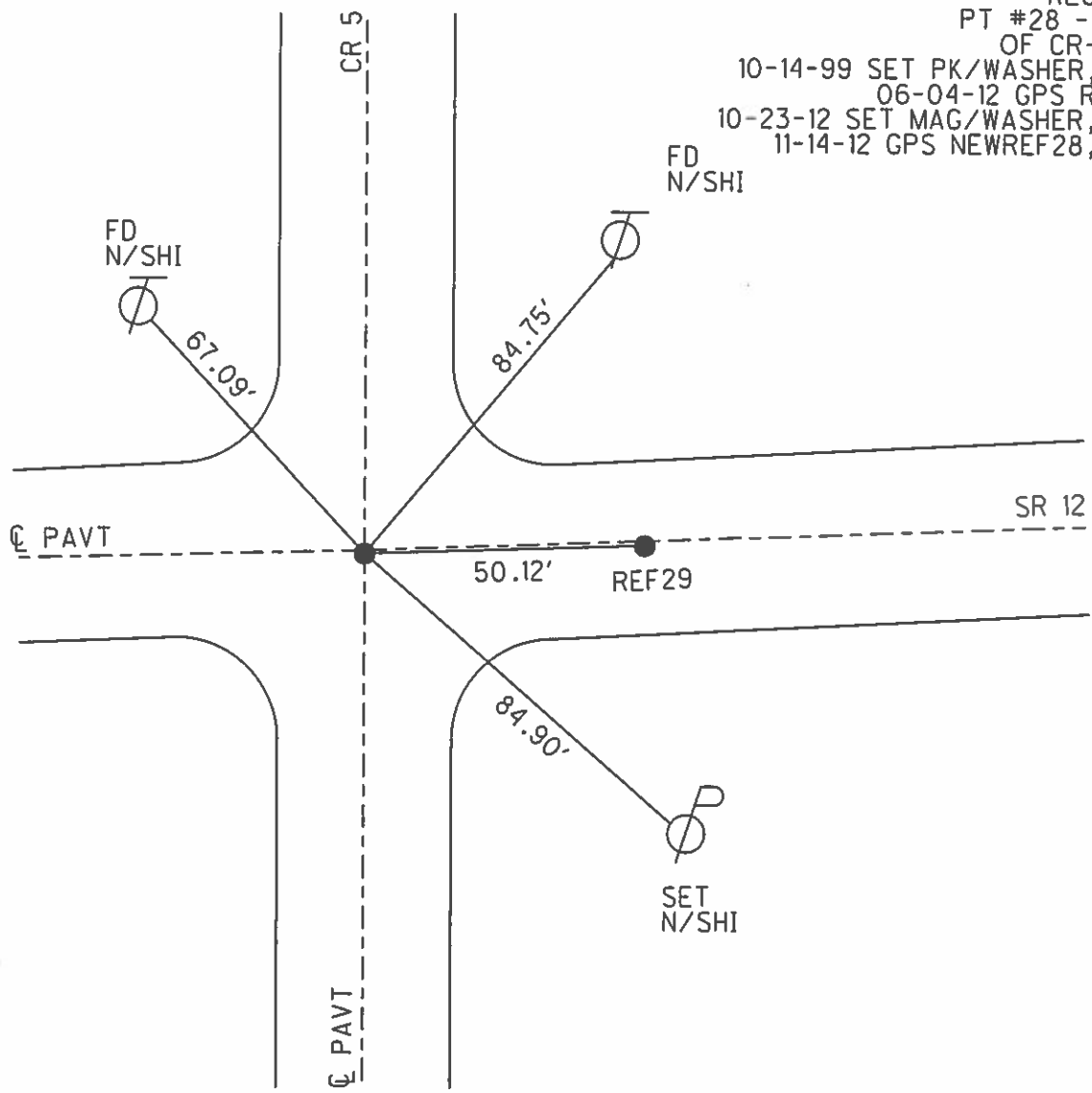
PERSONNEL \_\_\_\_\_ REFERENCE NO. 28 SHEET 30 OF 70  
 NOTES HUSS DATE 05-21-12 ROUTE SR 12  
 H.C. HUSS WEATHER FAIR COUNTY SENECA  
 R.C. CANTERBURY TEMP. 85° TOWNSHIP JACKSON  
 \_\_\_\_\_ SECTION 23  
 \_\_\_\_\_ T\_\_N R\_\_E

TYPE MONUMENT \_\_\_\_\_ PK/WASHER \_\_\_\_\_  
 ON SURFACE - BELOW \_\_\_\_\_ ON \_\_\_\_\_  
 LEFT -  $\odot$  PAV'T - RIGHT \_\_\_\_\_ 1.9' \_\_\_\_\_  
 \_\_\_\_\_ TO \_\_\_\_\_ EDGE PAVEMENT \_\_\_\_\_  
 S.L.M. \_\_\_\_\_ 367+92.88 \_\_\_\_\_

GRID: NORTHING: 561986.611 EASTING: 1742002.643



RECORD:  
 PT #28 - 3' W  
 OF CR-5 S.  
 10-14-99 SET PK/WASHER, SAH  
 06-04-12 GPS REF28  
 10-23-12 SET MAG/WASHER, SDC  
 11-14-12 GPS NEWREF28, SDC



# O.D.O.T. DISTRICT 2 SURVEY OFFICE

PERSONNEL \_\_\_\_\_

REFERENCE NO. 28, 29

SHEET 23 OF 52

NOTES Canterbury

H.G. Rousos

R.C. Barnhisel

DATE 8-20-99

WEATHER Fair

TEMP. +85°F

ROUTE 12

COUNTY Seneca

TOWNSHIP Jackson

SECTION 23, 24

T \_\_\_\_\_ R \_\_\_\_\_

TYPE MONUMENT \_\_\_\_\_

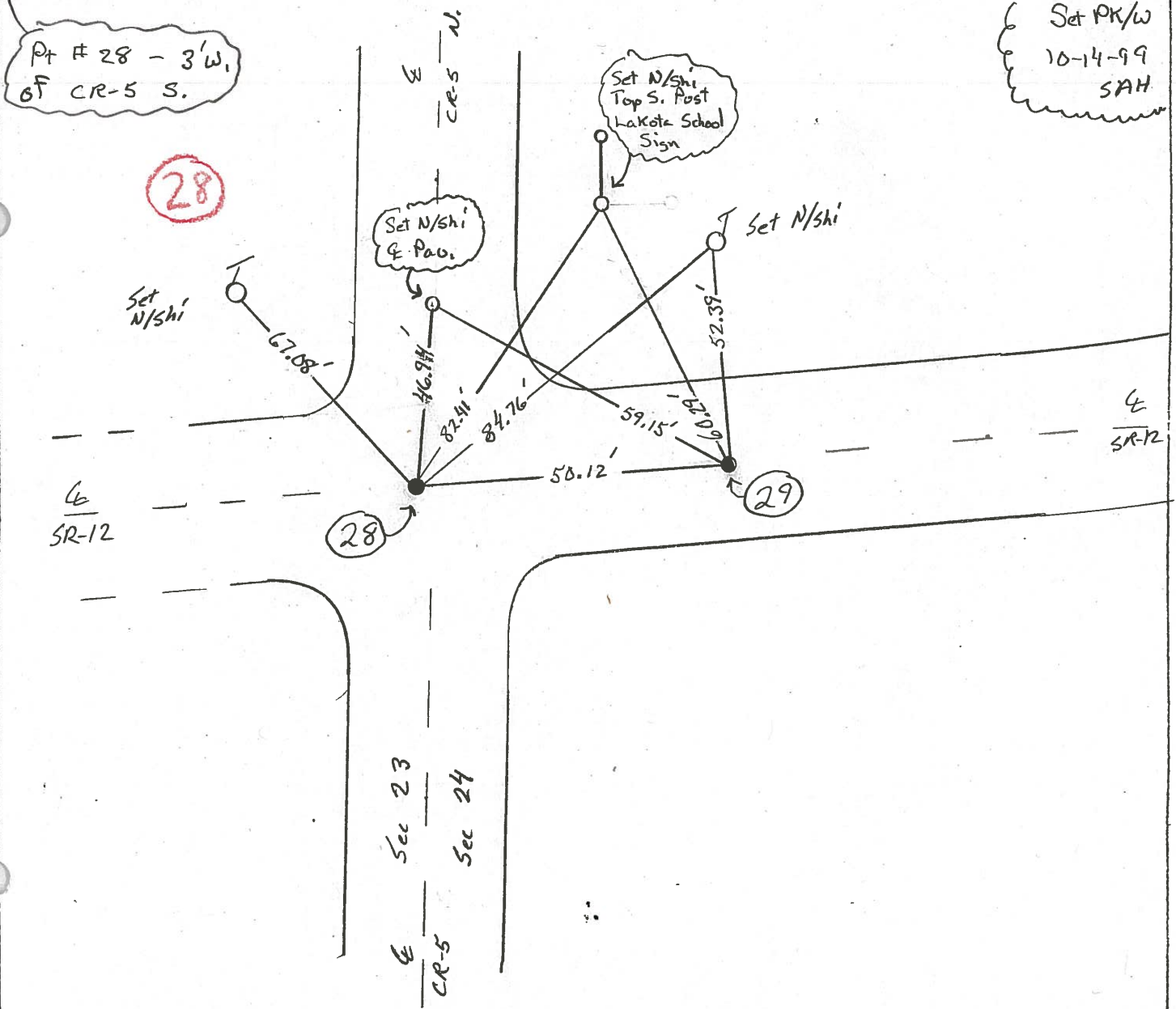
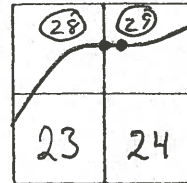
<sup>(28)</sup> PK/W <sup>(29)</sup> PK/W

~~ON SURFACE~~ <sup>(28)</sup> Surface <sup>(29)</sup> Surface

~~RIGHT~~ <sup>(28)</sup> 1.4' Rt <sup>(29)</sup> 1.9' Rt

TO EDGE PAVEMENT <sup>(29)</sup> 10.2' to Rt Eop

S.L.M. <sup>(28)</sup> 367+92.88 <sup>(29)</sup> 368+43



PERSONNEL TITLE PERSONNEL TITLE

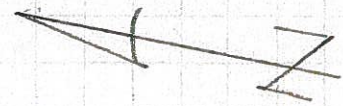
COUNTY Seneca DATE 10-17-72

S. R. 12 WEATHER Fair

SEC. 23E24 Jackson twp. TEMP. 50°

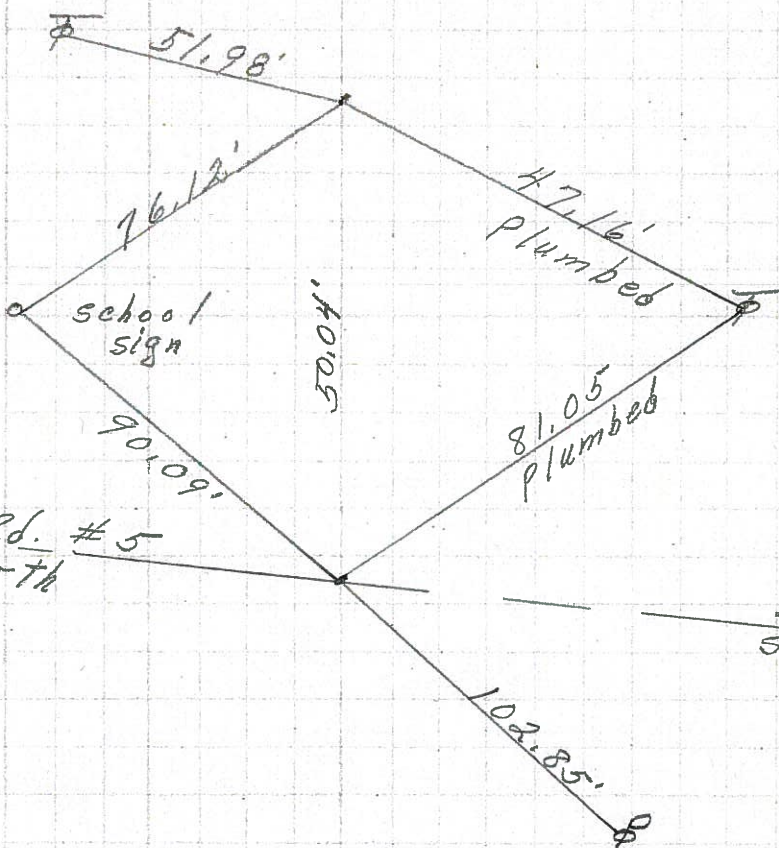
DESCRIPTION Eastoria to Sandusky Co. Line JOB NO.

LEFT CENTER LINE RIGHT



P.I. of R/W  
352+72.05

29

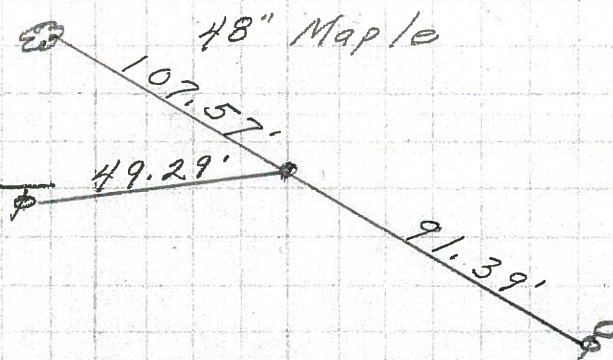


P.C. of R/W  
352+20.80  
small R.R. spk.

28

T.S.  
350+65.89  
small R.R. spk.

27



PERSONNEL TITLE PERSONNEL TITLE

COUNTY Seneca

DATE

S. R. 12-113

WEATHER

SEC.

TEMP.

DESCRIPTION

LEFT

CENTER LINE

RIGHT

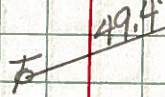
JOB NO.

Sta. 253+20.06 E/w marker 33' P.K. 33' E/w marker

P.C.

Iron Pin on E of E/w

#431



P.K.

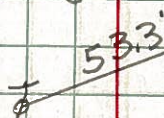


Sta. 255+08.06 E/w marker 33' P.K. 33' E/w marker

P.T.

Iron Pin on E of E/w

#432



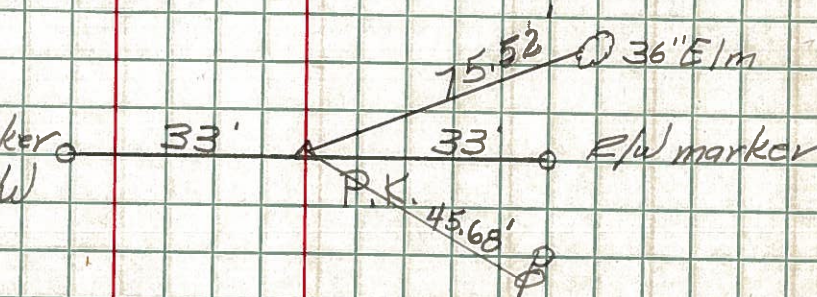
P.K.

Sta. 263+80

P.I.

Iron pin on E of E/w

#433



P.K.

End of Sec. Q Start Sec. G.

E/w marker 33' P.K. 33' E/w marker

Sta. 266+32.06

P.C.

Iron Pin on E of E/w

#434

P.K.

E/w marker 33' P.K. 33' E/w marker

Sta. 268+35.39

P.T.

Iron Pin on E of E/w

#435

P.K.