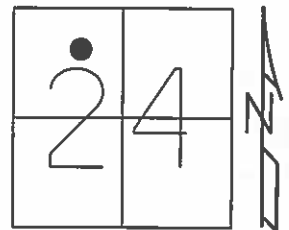


O.D.O.T. DISTRICT 2 SURVEY OFFICE (USE ONLY)

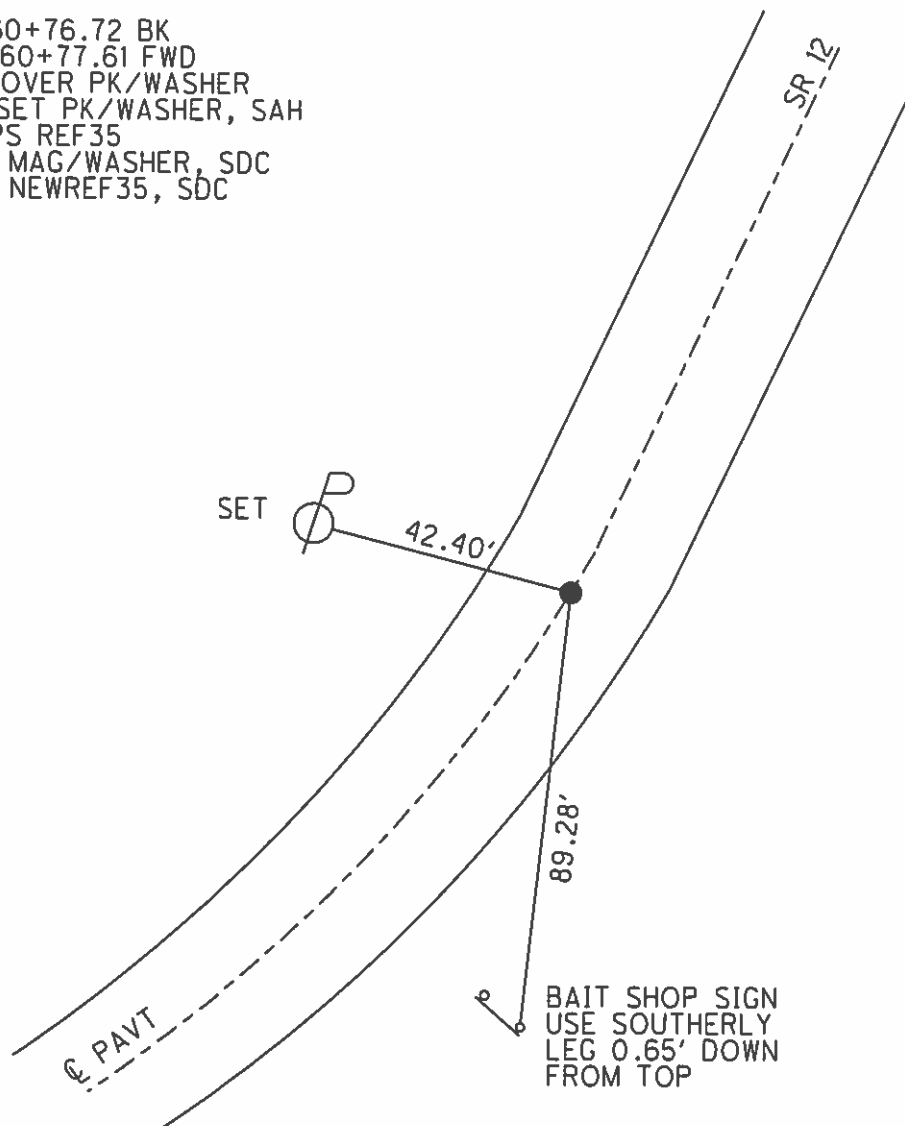
PERSONNEL	REFERENCE NO.	<u>35</u>	SHEET	<u>36</u>	OF	<u>70</u>
NOTES	<u>HUSS</u>	DATE	<u>05-25-12</u>	ROUTE	<u>SR 12</u>	
H.C.	<u>HUSS</u>	WEATHER	<u>FAIR/WINDY</u>	COUNTY	<u>SENECA</u>	
R.C.	<u>CANTERBURY</u>	TEMP.	<u>82°</u>	TOWNSHIP	<u>JACKSON</u>	
				SECTION	<u>24</u>	
				T	<u>3</u>	R
					<u>N</u>	<u>13</u>
					<u>E</u>	

TYPE MONUMENT \_\_\_\_\_ PK/WASHER \_\_\_\_\_  
 ON SURFACE - BELOW \_\_\_\_\_ ON \_\_\_\_\_  
 LEFT -  $\phi$  PAV'T - RIGHT \_\_\_\_\_ ON \_\_\_\_\_  
12.2' TO RT EDGE PAVEMENT  
 S.L.M. \_\_\_\_\_ 376+54

GRID: NORTHING: 562212.151 EASTING: 1742824.890



RECORD  
 S.T. STA 360+76.72 BK  
                   360+77.61 FWD  
 PK/WASHER OVER PK/WASHER  
 10-14-99 RESET PK/WASHER, SAH  
 06-04-12 GPS REF35  
 11-14-12 SET MAG/WASHER, SDC  
 11-14-12 GPS NEWREF35, SDC



O.D.O.T. DISTRICT 2. SURVEY OFFICE

PERSONNEL

REFERENCE NO. 35

SHEET 28 OF 52

NOTES M CANTERBURY

H.C. M BARNHISEL

R.C. T ROUSOS

DATE 8-20-99

WEATHER FAIR

TEMP. +85°

ROUTE S.R. 12

COUNTY Seneca

TOWNSHIP JACKSON

SECTION 24

T3 N R 13 E

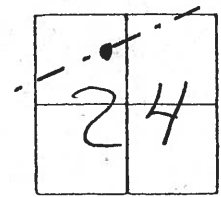
TYPE MONUMENT P.K./WASHER

ON SURFACE - ~~BELOW~~ Yes

~~LEFT~~ - C. PAVT. - ~~RIGHT~~ Yes

12.2 TO Rt EDGE PAVEMENT

S.L.M. 376 + 54



Record

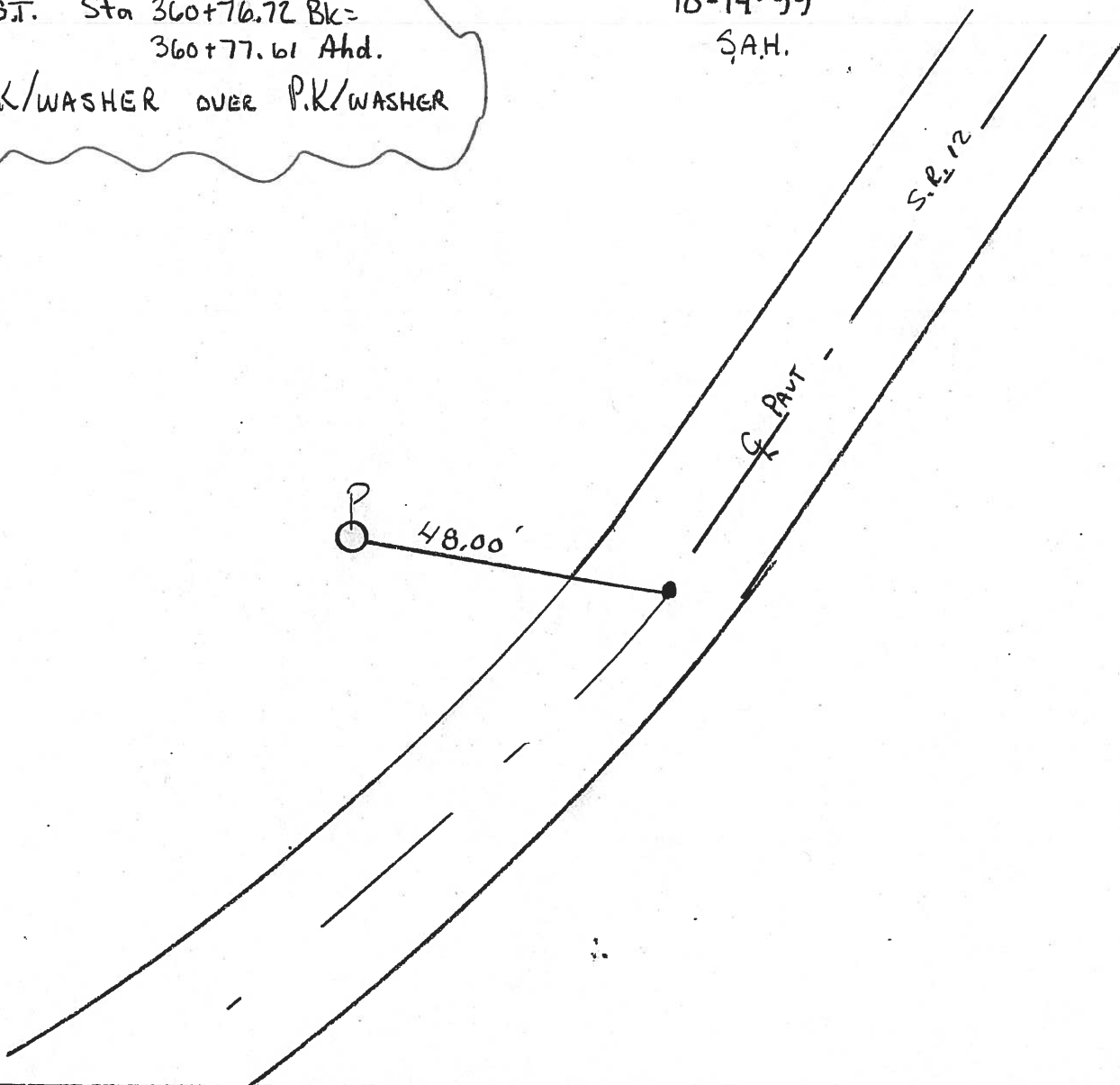
ST. Sta 360+76.72 Bk=  
360+77.61 Ahd.

P.K./WASHER OVER P.K./WASHER

Reset P.K./WASHER

10-14-99

S.A.H.



O.D.O.T. DISTRICT 2 SURVEY OFFICE

PERSONNEL

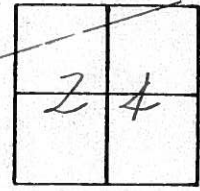
NOTES Cronin  
H.C. Rippte  
R.C. Barbour  
Geyman

REFERENCE NO. 35  
DRAWN 2/01/90  
DATE 1/31/90  
WEATHER sunny  
TEMP. 40°

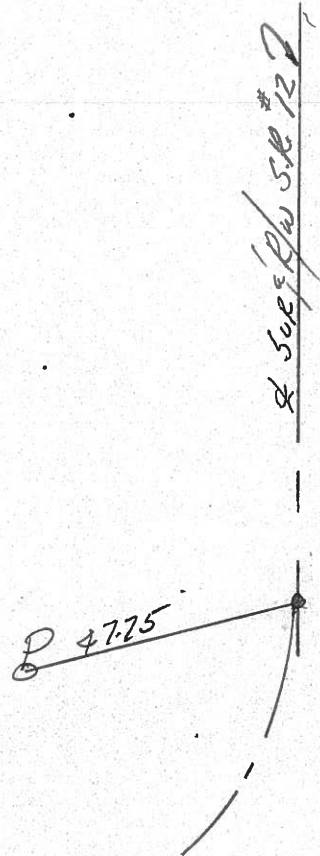
SHEET 29 OF \_\_\_\_\_

ROUTE #12  
COUNTY Seneca  
TOWNSHIP Jackson  
SECTION 24  
T3 N R13 E

TYPE MONUMENT P.K. & washer  
ON SURFACE - BELOW \_\_\_\_\_  
LEFT - PAV'T. - RIGHT \_\_\_\_\_  
\_\_\_\_\_JO\_\_\_\_\_EDGE PAVEMENT  
S.L.M. \_\_\_\_\_



S.T.  
360+76.72 BK=  
360+77.61 Ahd.  
P.K. and washer  
at top mine spike



PERSONNEL	TITLE	PERSONNEL	TITLE	COUNTY	DATE	WEATHER	TEMP
				Seneca	11-6-72	Fair	50°
				S. R. 12			
				SEC. 24 Jackson Twp.			

DESCRIPTION Fostoria to Sandusky Co. Line JOB NO. \_\_\_\_\_

