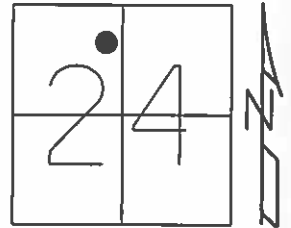


O.D.O.T. DISTRICT 2 SURVEY OFFICE (USE ONLY)

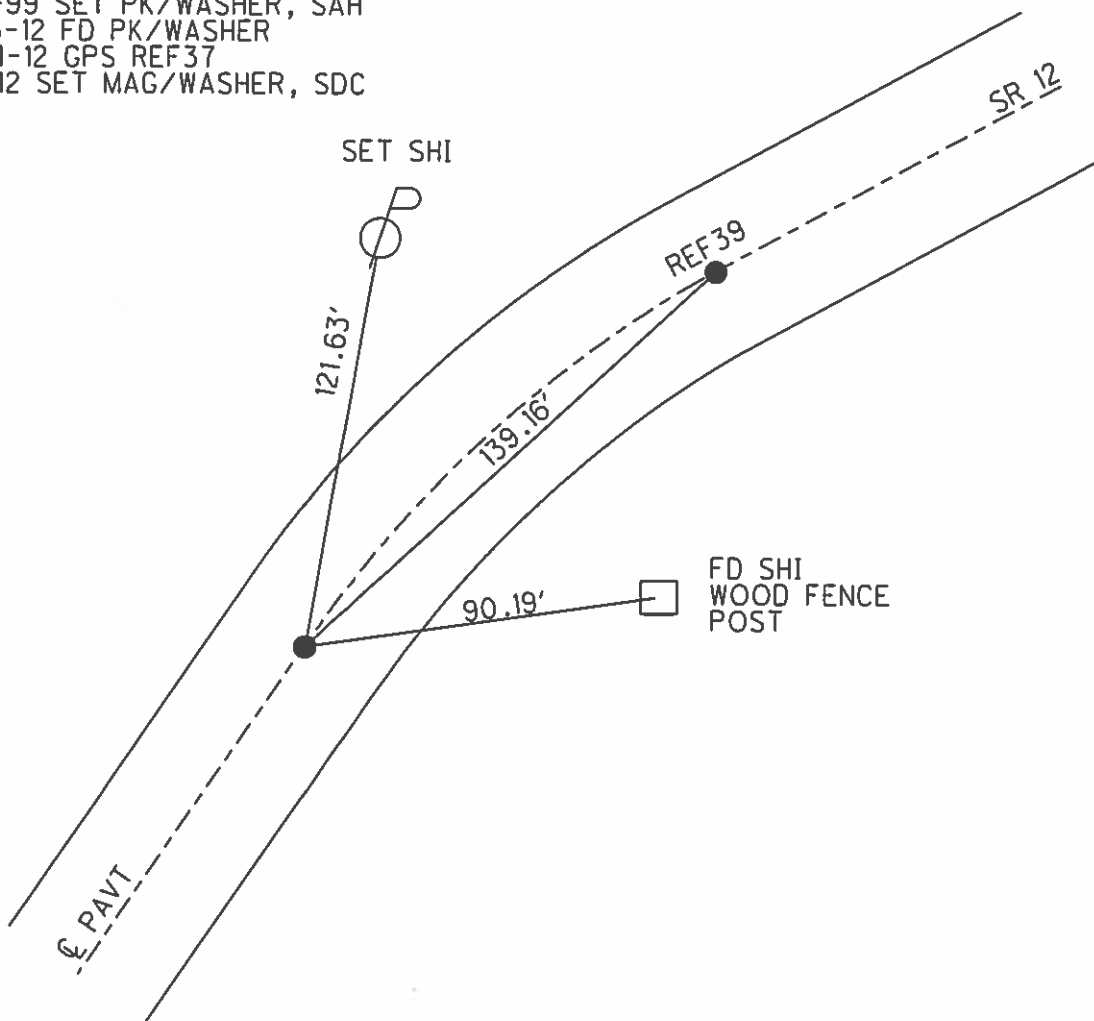
PERSONNEL _____ REFERENCE NO. 37 SHEET 38 OF 70
 NOTES HUSS DATE 05-25-12 ROUTE SR 12
 H.C. HUSS WEATHER FAIR/WINDY COUNTY SENECA
 R.C. CANTERBURY TEMP. 85° TOWNSHIP JACKSON
 _____ SECTION 24
 _____ T 3 N R 13 E

TYPE MONUMENT _____ PK/WASHER _____
 ON SURFACE - BELOW _____ ON _____
 LEFT - Q PAV'T - RIGHT _____ 0.4'
9.9' TO LT EDGE PAVEMENT
 S.L.M. _____ 395+23



GRID: NORTHING: 562850.384 EASTING: 1744573.305

RECORD:
 S.C. STA 379+38.75
 PK/WASHER ATOP SAME
 10-14-99 SET PK/WASHER, SAH
 05-25-12 FD PK/WASHER
 06-04-12 GPS REF37
 11-14-12 SET MAG/WASHER, SDC



O.D.O.T. DISTRICT 2 SURVEY OFFICE

PERSONNEL

REFERENCE NO. 37

SHEET 30 OF 52

NOTES CANTERBURY

H.C. ROUSAS

R.C. BARNHISEL

DATE 8-20-99

WEATHER FAIR

TEMP. +85

ROUTE S.R. 12

COUNTY Seneca

TOWNSHIP Jackson

SECTION 24

T 3 N R 13 E

TYPE MONUMENT P.K. / WASHER

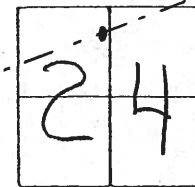
Reset 10-14-99
S.A.H.

ON SURFACE - ~~BELOW~~ Yes

LEFT- & PAV'T. - ~~RIGHT~~ 0.4'

12.2 TO LT EDGE PAVEMENT

S.L.M. 395+23

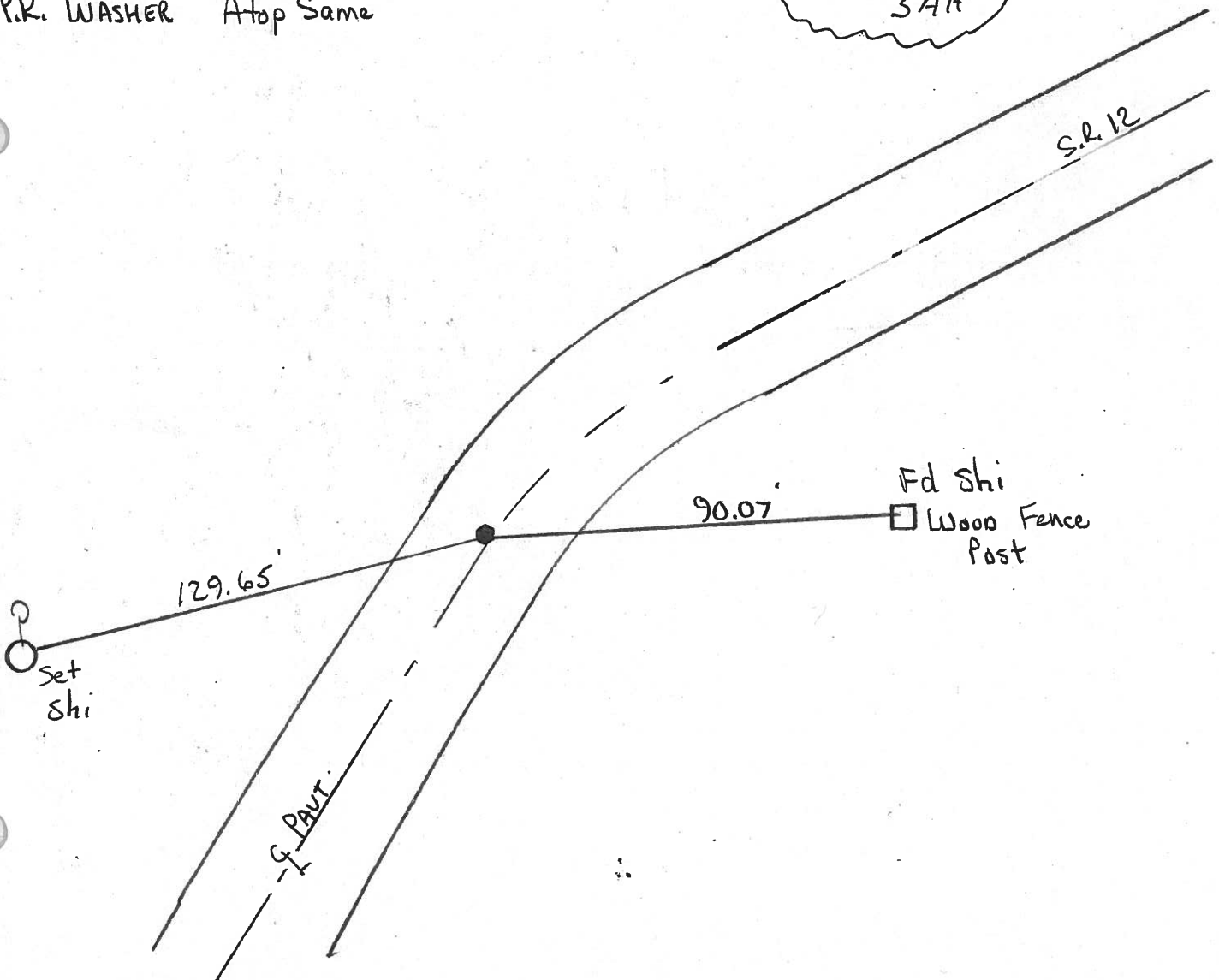


Record

S.C. Sta 379+38.75

P.K. WASHER Atop Same

Set PK/W
10-14-99
SAH



O.D.O.T. DISTRICT 2 SURVEY OFFICE

PERSONNEL

NOTES Cronin
H.C. Ripple
R.C. Barbour
Geyman

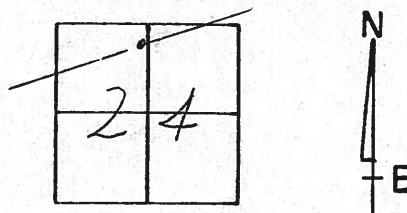
REFERENCE NO. 51

DRAWN 2/01/90
DATE 1/31/90
WEATHER sonny
TEMP. 40°

SHEET 31 OF

ROUTE #12
COUNTY Seneca
TOWNSHIP Jackson
SECTION 24
T 3 N R 13 E

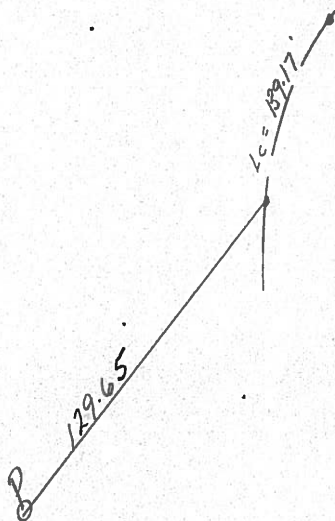
TYPE MONUMENT Mine Spike
ON SURFACE - BELOW 1 1/2" ±
LEFT - ☉ PAV'T. - RIGHT
 TO EDGE PAVEMENT
S.L.M.



12

S.C.

379+38.75



PERSONNEL TITLE PERSONNEL TITLE

COUNTY Seneca DATE 11-6-72

S. R. 12 WEATHER Fair

SEC. 24 Jackson Twp. TEMP. 60°

DESCRIPTION Fostoria to Sandusky Co. Lines JOB NO.

LEFT CENTER LINE RIGHT

C.S.
380+77.92
small R.R. spk.

39

P.I. ?
380+09.32
1" iron pin
with "x" on top
 $\Delta = 10^\circ 47' \text{ Rt.}$

38

S.C. ?
380+09.32
small R.R. spk.

37

