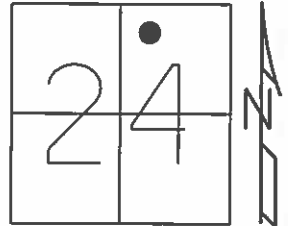


O.D.O.T. DISTRICT 2 SURVEY OFFICE (USE ONLY)

PERSONNEL _____ REFERENCE NO. 40 SHEET 41 OF 70
 NOTES HARBAUGH DATE 05-30-12 ROUTE SR 12
 H.C. CANTERBURY WEATHER CLEAR COUNTY SENECA
 R.C. COUTCHER TEMP. 58° TOWNSHIP JACKSON
 _____ SECTION 24
 _____ T 3 N R 13 E

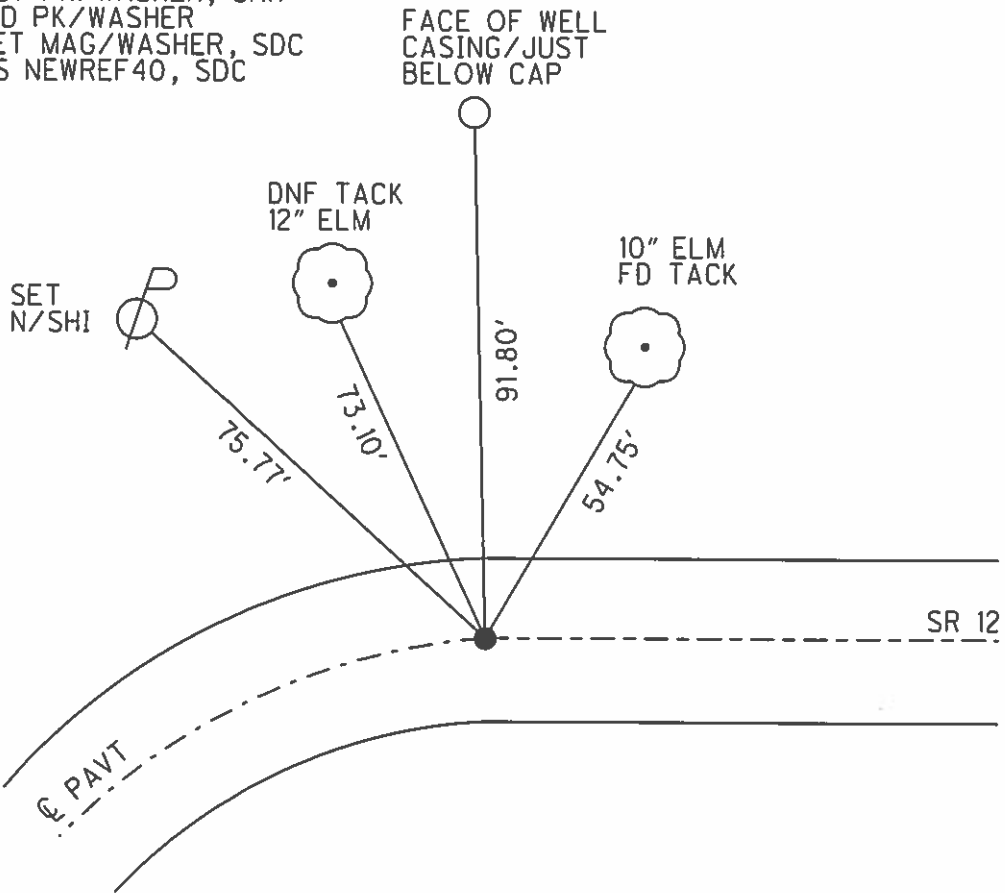
TYPE MONUMENT _____ PK/WASHER _____
 ON SURFACE - BELOW _____ ON _____
 LEFT - Q PAV'T - RIGHT _____ 0.2' _____
10.6' TO LT EDGE PAVEMENT
 S.L.M. _____ 400+62



GRID: NORTHING: 562961.666 EASTING: 1745100.312

RECORD:

- S.T. 384+77.92 BK
- 384+79.43 FWD
- PK/W ATOP MINE SPIKE
- 10-14-99 SET PK/WASHER, SAH
- 05-30-12 FD PK/WASHER
- 10-23-12 SET MAG/WASHER, SDC
- 11-13-12 GPS NEWREF40, SDC



O.D.O.T. DISTRICT 2 SURVEY OFFICE

PERSONNEL

REFERENCE NO. 40

SHEET 33 OF 52

NOTES Loehrke

H.C. Rousos

R.C. Loehrke

DATE 8-19-99

WEATHER Overcast

TEMP. 74°F

ROUTE 12

COUNTY Seneca

TOWNSHIP Jackson

SECTION 24

T 3 N R 13 E

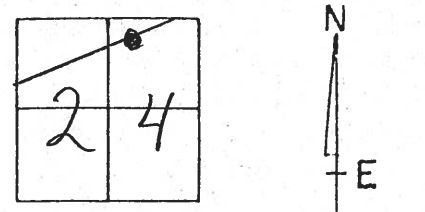
TYPE MONUMENT PK/W

ON SURFACE - ~~BELOW~~ Surface

LEFT - ~~RIGHT~~ 0.2

12.5 TO Lt. EDGE PAVEMENT

S.L.M. 400 + 62

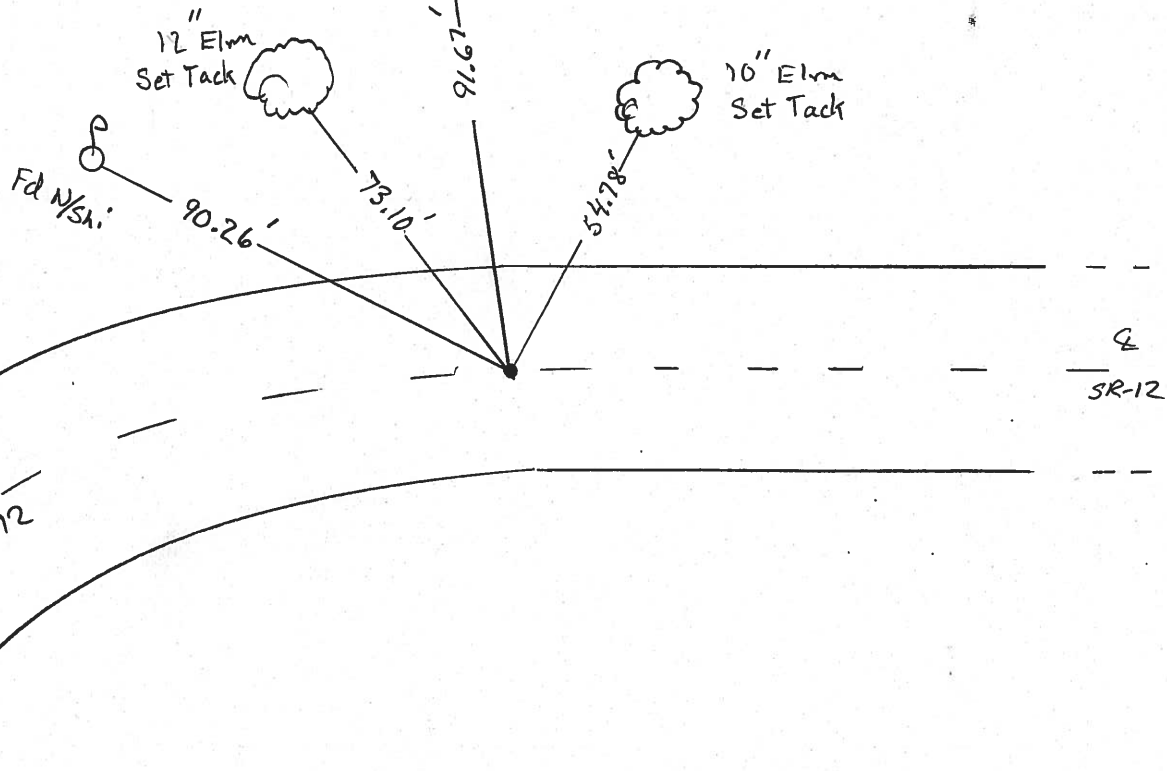


Record:

S.T. 384+77.92 BK =
384+79.43 Ahd.
PK/W atop Min. Spk.

Set PK/W
10-14-99
SAH

Face of Well
Casing / Just
below cap



O.D.O.T. DISTRICT 2 SURVEY OFFICE

PERSONNEL

REFERENCE NO. 40

SHEET 34 OF

NOTES Cronin

H.C. Ripple

R.C. Barbour

Geyman

DATE 2/01/90

WEATHER OVERCAST - windy

TEMP. 42°

ROUTE #12

COUNTY Seneca

TOWNSHIP Jackson

SECTION 24

T 3 N R 13 E

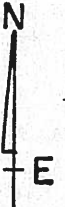
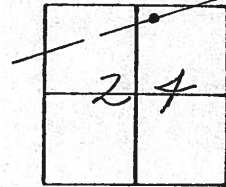
TYPE MONUMENT P.K. & washer

ON SURFACE - BELOW

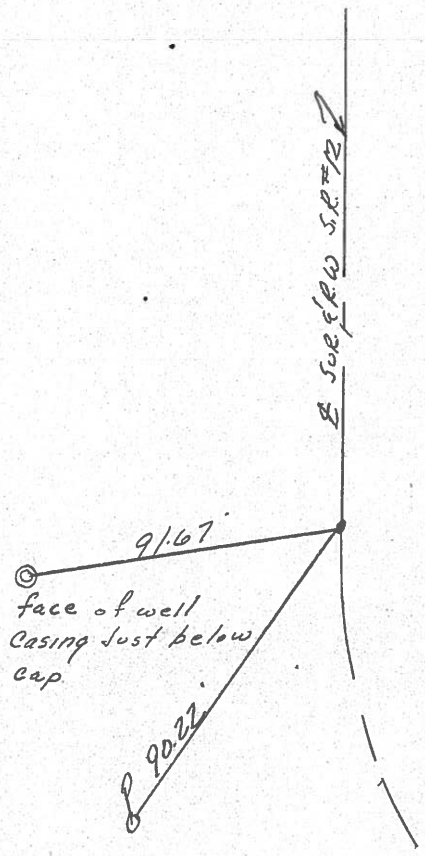
LEFT - PAV'T. - RIGHT

 TO EDGE PAVEMENT

S.L.M.



S.T.
384+77.92 Bk =
384+79.43 Abd
P.K. & washer at top
mine spike



SHEET NO. 114

PERSONNEL TITLE PERSONNEL TITLE

COUNTY Seneca DATE 11-6-72

S. R. 12 WEATHER Fair

SEC. 24 Jackson Twp. TEMP. 60°

DESCRIPTION Fostoria to Sandusky Co. Line JOB NO. _____

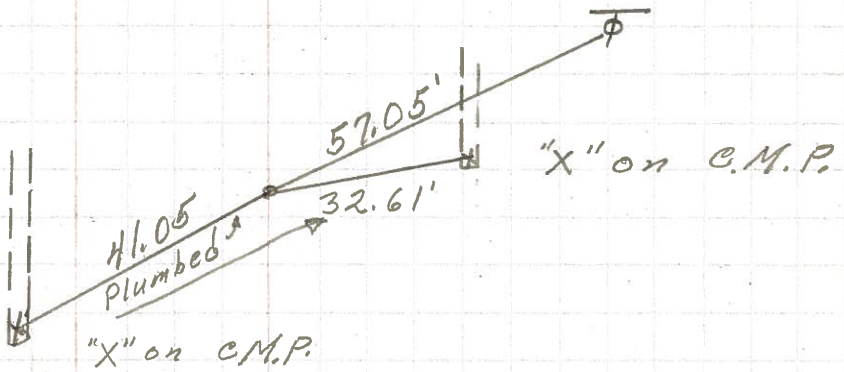
LEFT

CENTER LINE

RIGHT

S.T.
386 + 45.50
small spk.

41



S.T.
384 + 77.92 BK. =
384 + 79.43 Ahd.
small spk.

40

