

O.D.O.T. DISTRICT 2 SURVEY OFFICE

PERSONNEL

NOTES LOEHRKE
 H.C. ROUSOS
 R.C. LOEHRKE

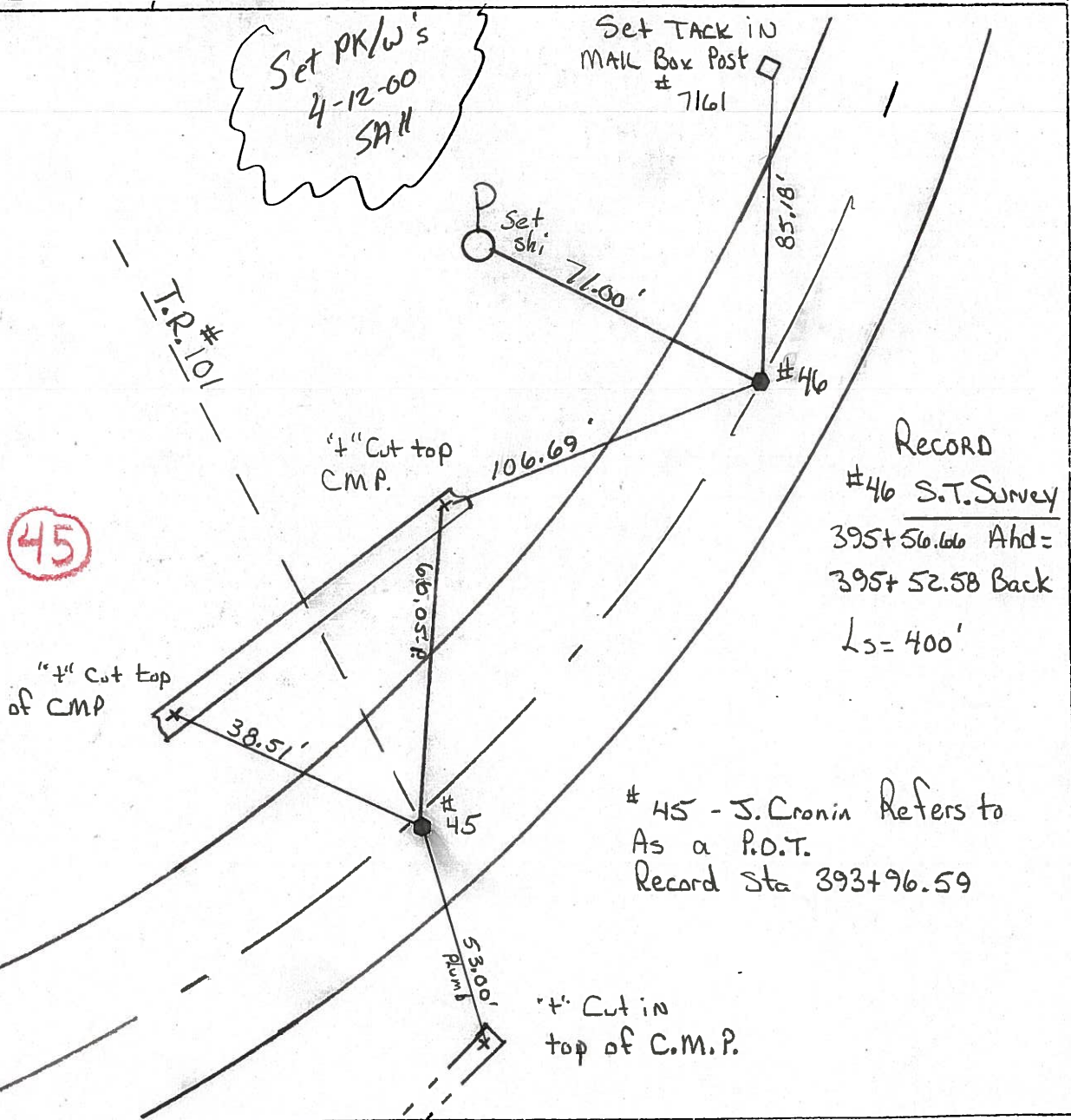
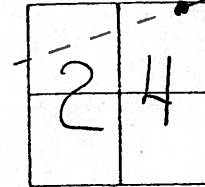
REFERENCE NO. 45246 SHEET 38 OF 52

DATE 8-19-99
 WEATHER OVERCAST
 TEMP. +74°

ROUTE S.R. 12
 COUNTY Seneca
 TOWNSHIP Jackson
 SECTION 24
T 3 N R 13 E

Reset 4-12-2000
 CL SH

TYPE MONUMENT P.K./WASHERS
 ON SURFACE - ~~BELOW~~ Yes
 EFF - C PAV'T. - RIGHT #45 @ 1.7' #46 ON
10.9 TO R+ EDGE PAVEMENT
 S.L.M. 409+85 & 411+57



RECORD
 #46 S.T. Survey
 395+56.66 Ahd=
 395+52.58 Back
 Ls=400'

#45 - J. Cronin Refers to
 As a P.O.T.
 Record Sta 393+96.59

O.D.O.T. DISTRICT 2 SURVEY OFFICE

PERSONNEL

NOTES Cronin
 H.C. Ripple
 R.C. Barbour
Geyman

REFERENCE NO. 45
 DRAWN 2/05/90
 DATE 2/01/90
 WEATHER overcast & windy
 TEMP. 42°

SHEET 39 OF

ROUTE #12
 COUNTY Seneca
 TOWNSHIP Jackson
 SECTION 24
T 3 N R 13 E

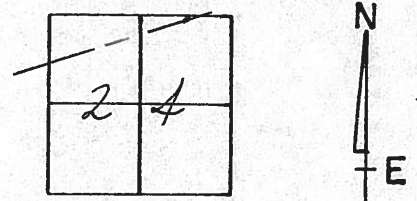
TYPE MONUMENT P.K. & Washer

ON SURFACE - BELOW

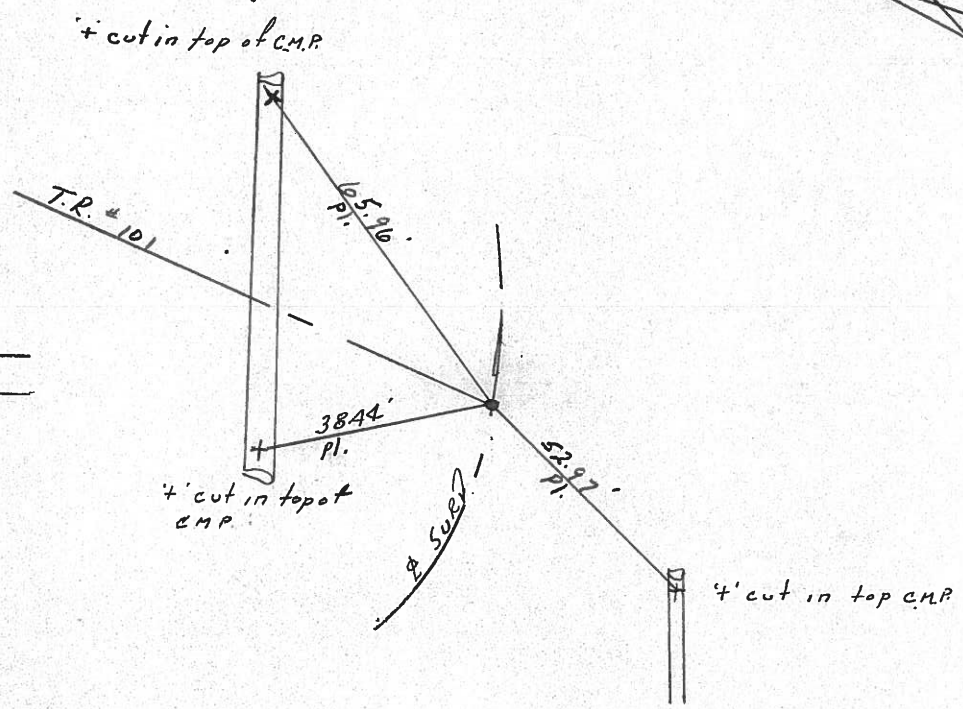
LEFT - € PAV'T. - RIGHT 1'± (Plan 0.14Rt)

 TO EDGE PAVEMENT

S.L.M.



P.O.T.
393+96.59



PERSONNEL TITLE PERSONNEL TITLE

COUNTY Seneca DATE 11-9-72

S. R. 12 WEATHER Cloudy

SEC. 24 Jackson Twp. TEMP. 40°

DESCRIPTION Fostoria to Sandusky Co. Line

JOB NO.

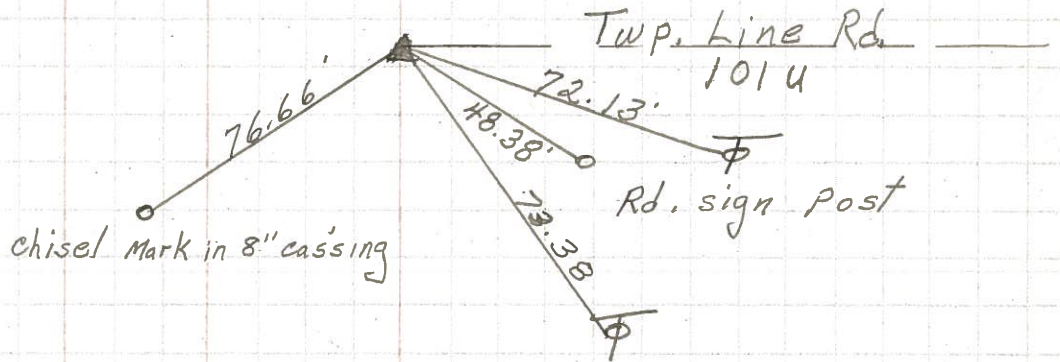
LEFT

CENTER LINE

RIGHT

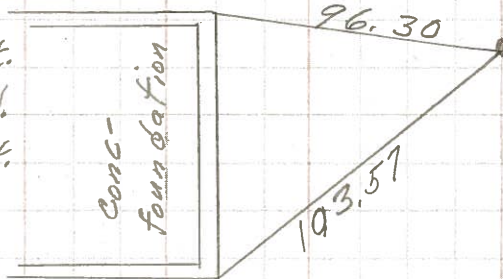
318+20 (old)
R.R. spk. on
E of R/W
P.K. Nail on top

47



S.T.
395+52.58 Bk.
395+56.66 Ahd.
small R.R. spk.

46



P.O.T.
393+96.50
small RR. spk.
Twp. Rd. 101V

45

