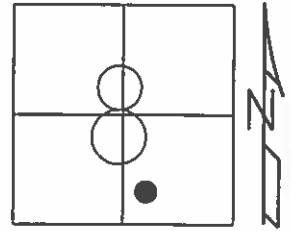


O.D.O.T. DISTRICT 2 SURVEY OFFICE (USE ONLY)

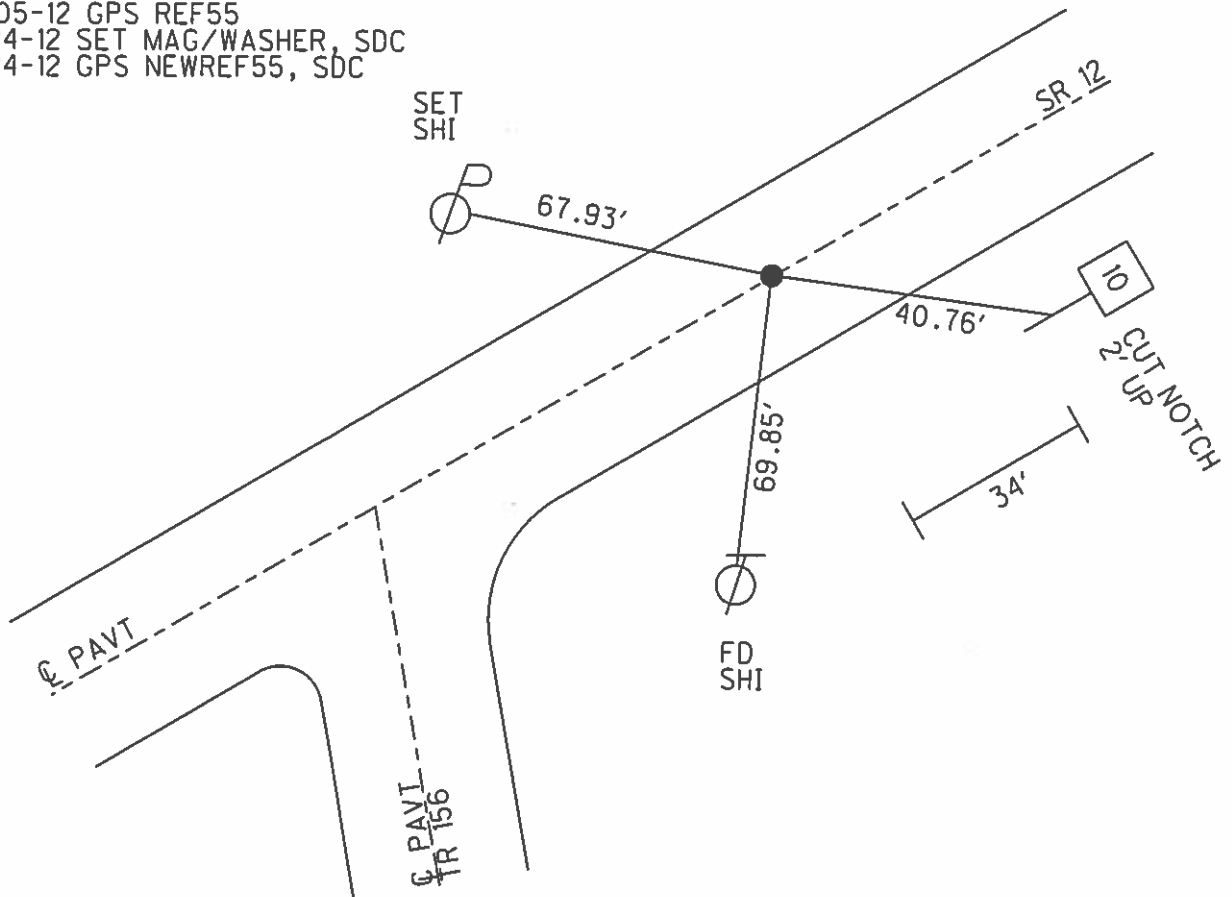
PERSONNEL _____ REFERENCE NO. 55 SHEET 56 OF 70
 NOTES HARBAUGH DATE 05-30-12 ROUTE SR 12
 H.C. CANTERBURY WEATHER PTLY CLOUDY COUNTY SENECA
 R.C. COUTCHER TEMP. 75° TOWNSHIP LIBERTY
 _____ SECTION 8
 _____ T 3 N R 14 E

TYPE MONUMENT _____ PK/WASHER _____
 ON SURFACE - BELOW _____ ON _____
 LEFT - Q PAV'T - RIGHT _____ 1' _____
9.7' TO LT EDGE PAVEMENT
 S.L.M. _____ 527+03



GRID: NORTHING: 569160.480 EASTING: 1756007.423

RECORD P.I.
 STA 511+62.45
 PK NAIL ATOP PK NAIL
 ATOP 2" IRON PIPE
 ON Q R/W 1987
 P.I. IS ±155' NE OF
 Q PAVT T.R. 156
 11-18-99 SET PK/WASHER, SAH
 05-30-12 FD PK/WASHER
 06-05-12 GPS REF55
 10-24-12 SET MAG/WASHER, SDC
 10-24-12 GPS NEWREF55, SDC



O.D.O.T. DISTRICT 2 SURVEY OFFICE

PERSONNEL

REFERENCE NO. 55

SHEET 47 OF 52

NOTES LOEHRKE

H.C. VAN DUSEN

R.C. ROUSOS

DATE 8-18-99

WEATHER Sunny

TEMP. 73

ROUTE SR 12

COUNTY Seneca

TOWNSHIP Liberty

SECTION 8

T3 NR 14 E

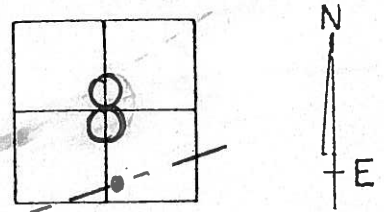
TYPE MONUMENT P.K. / WASHER

ON SURFACE - ~~BELOW~~ Yes

~~LEFT~~ - Q PAV'T. - ~~RIGHT~~ Yes

12' TO EDGE PAVEMENT

S.L.M. 527103



RECORD P.I.

Sta 511+62.45

P.K. NAIL ATOP P.K. NAIL

Atop 2 1/2" IRON Pipe

ON Q R/W

1987

Set PK/W

11-18-99

SMH

"4" on face of 8" oil well casing

Set Shi

53.76'

34.33'

39.75'

69.84'

Shi

10

2.5' up

Notch

53'

P.I. is $\pm 155'$ NE of a Q PAVT T.R. #156

Q PAVT

S.R. 12

T.R. #156

O.D.O.T. DISTRICT 2 SURVEY OFFICE

PERSONNEL

REFERENCE NO. 55

SHEET OF

NOTES Cronin

H.C. Ripple

R.C. Barbour

Geyman

DATE 10/18/87

WEATHER sunny

TEMP. 73°

ROUTE # 12

COUNTY Seneca

TOWNSHIP Liberty

SECTION 8

T. 3 N. R. 14 E.

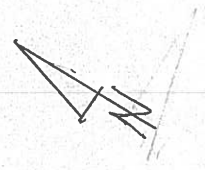
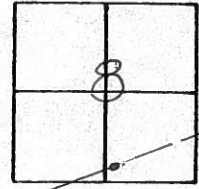
TYPE MONUMENT P.K. & washer

ON SURFACE - BELOW on surface

LEFT - ☉ PAV'T. - RIGHT & Post

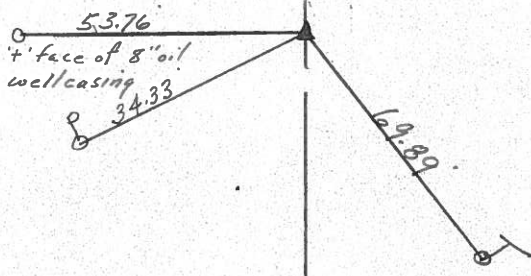
TO EDGE PAVEMENT

S.L.M. Sta. 511+62.45



S.L.M. # 127

P.K. & washer atop same
atop P.K. atop 22" I. pipe



PERSONNEL TITLE PERSONNEL TITLE

COUNTY Seneca DATE 11-10-72

S. R. 12 WEATHER Cloudy-Rain

SEC. 18 Liberty Twp. TEMP. 50°

DESCRIPTION Fostoria to Sandusky Co. Line JOB NO. _____

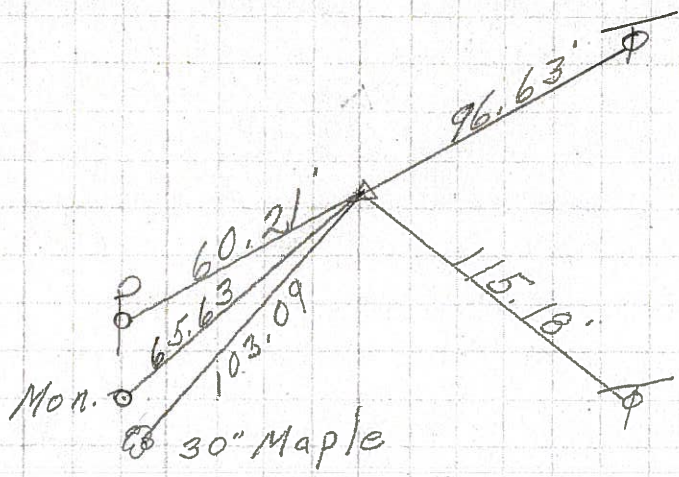
LEFT

CENTER LINE

RIGHT

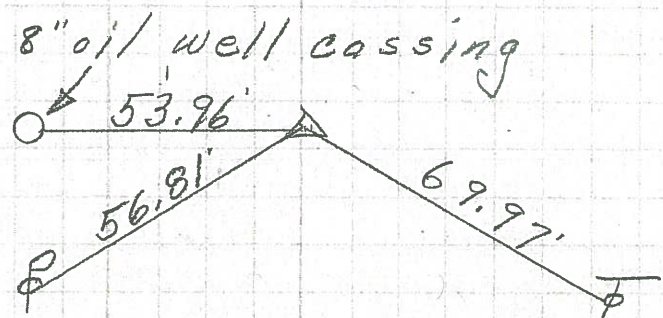
40+56.75 (old)
P.K. Nail on
E of R/W

56



P.I.
511+62.45
2 1/2" iron pipe
on E of R/W
P.K. Nail on top

55



P.I.
482+10.45
Mine spk. on Top
 $\Delta = 0^{\circ} 07' Rt.$

54

