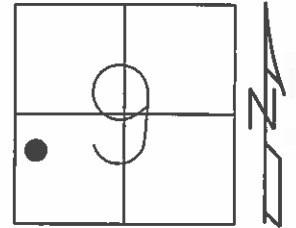


O.D.O.T. DISTRICT 2 SURVEY OFFICE (USE ONLY)

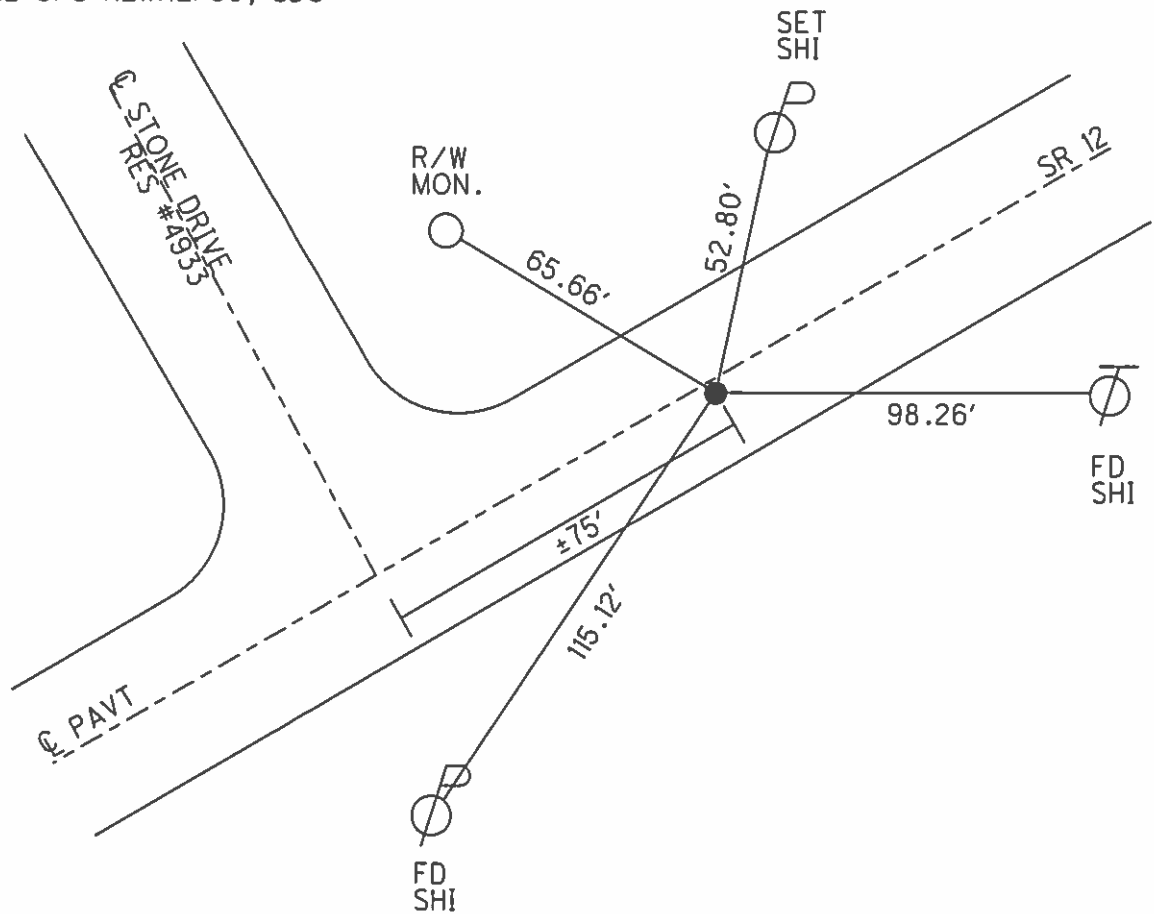
PERSONNEL	REFERENCE NO.	<u>56</u>	SHEET	<u>57</u>	OF	<u>70</u>
NOTES	<u>HARBAUGH</u>	DATE	<u>05-30-12</u>	ROUTE	<u>SR 12</u>	
H.C.	<u>CANTERBURY</u>	WEATHER	<u>PTLY CLOUDY</u>	COUNTY	<u>SENECA</u>	
R.C.	<u>COUTCHER</u>	TEMP.	<u>75°</u>	TOWNSHIP	<u>LIBERTY</u>	
				SECTION	<u>9</u>	
				T	<u>3</u>	R
					<u>N</u>	<u>14</u>
					<u>E</u>	

TYPE MONUMENT _____ PK/WASHER _____
 ON SURFACE - BELOW _____ ON _____
 LEFT - Q PAV'T - RIGHT 2.7'
8.2' TO RT. EDGE PAVEMENT
 S.L.M. _____ 560+25 _____

GRID: NORTHING: 570816.633 EASTING: 1758859.658



OLD STA 40+56.75
 11-10-99 SET PK/WASHER, SAH
 05-30-12 FD PK/WASHER
 06-05-12 GPS REF56
 10-24-12 SET MAG/WASHER, SDC
 10-24-12 GPS NEWREF56, SDC



O.D.O.T. DISTRICT 2 SURVEY OFFICE

PERSONNEL

REFERENCE NO. 56

SHEET 48 OF 52

NOTES LOEHRKE

H.C. VAN DUJEN

DATE 8-18-99

ROUTE S.R. 12

R.C. Rausos

WEATHER Sunny

COUNTY Seneca

TEMP. +73

TOWNSHIP Liberty

SECTION 9

T3 N R 14 E

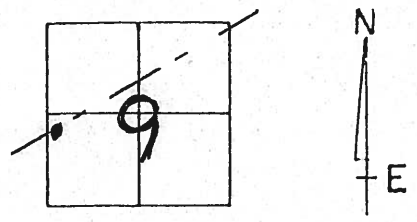
TYPE MONUMENT P.K. / WASHER

ON SURFACE - ~~BELOW~~ Yes

LEFT - ~~C~~ PAV'T. - ~~RIGHT~~ 2.7' Lt

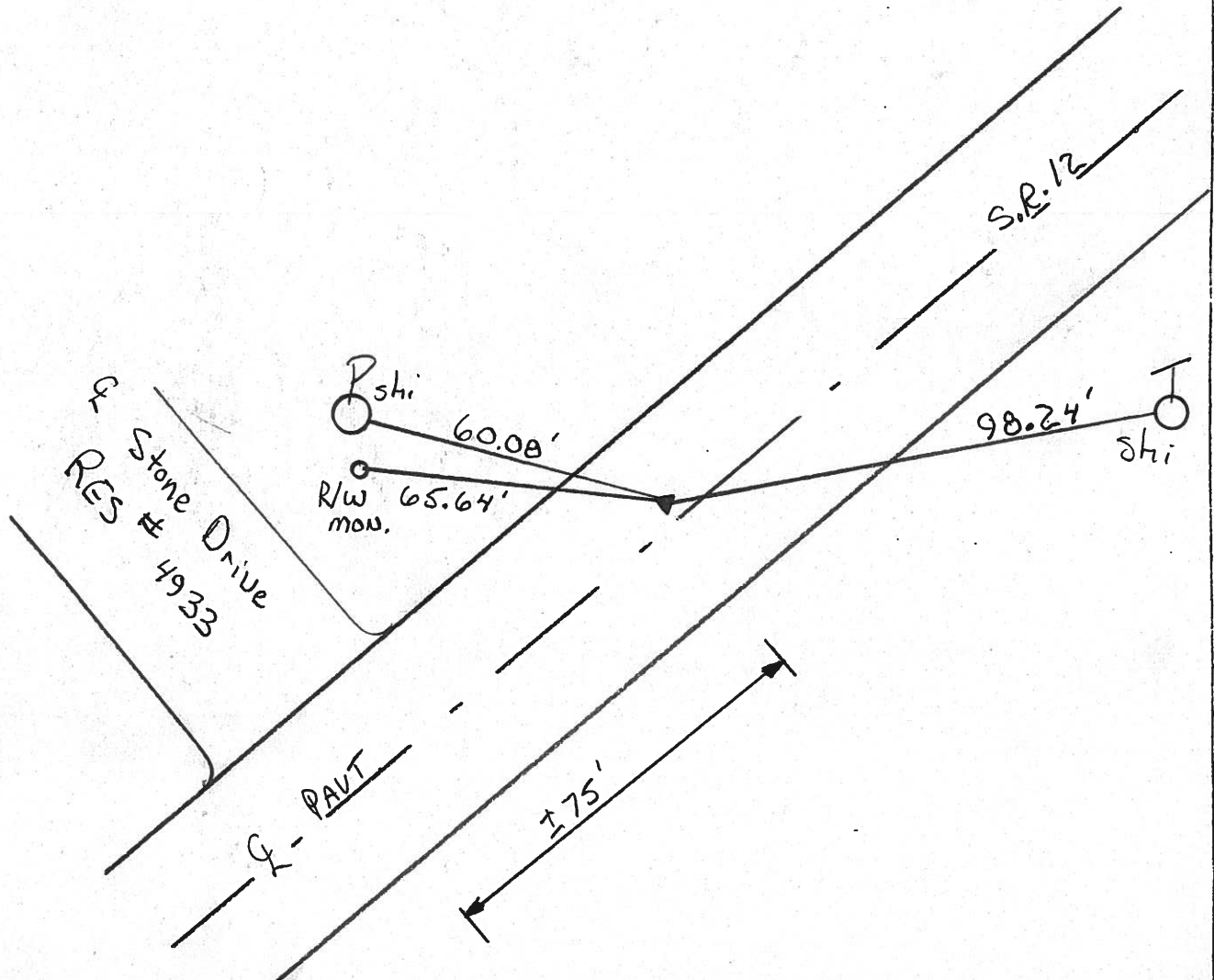
7.8 TO RT EDGE PAVEMENT

S.L.M. 560 + 25



(OLD Sta 40+56.75)

Set PK/W
11-10-99
SAH



O.D.O.T. DISTRICT 2 SURVEY OFFICE

PERSONNEL

REFERENCE NO. 56

SHEET OF

NOTES Cronin

H.C. Ripple

R.C. Barbour

Geyman

DATE 9/14/87

WEATHER sunny

TEMP. 73°

ROUTE # 12

COUNTY Seneca

TOWNSHIP Liberty

SECTION 9

T 3 N R 14 E

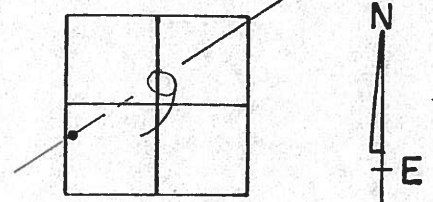
TYPE MONUMENT P.K. E'washer

ON SURFACE - BELOW on surface

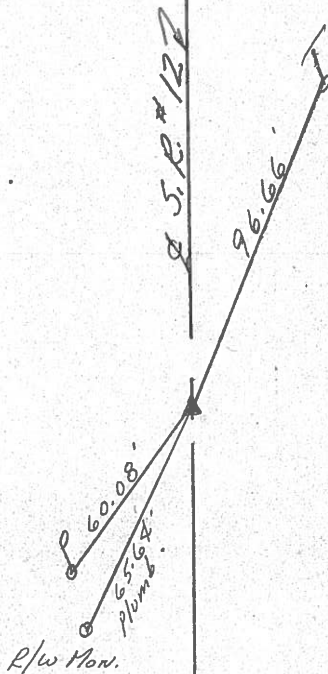
LEFT - ☉ PAV'T. - RIGHT 3' R.L. Pavt.

 TO EDGE PAVEMENT

S.L.M. old Sta. 40+56.75



P.K. E'washer atop same
atop P.K.



PERSONNEL TITLE PERSONNEL TITLE

COUNTY Seneca

DATE 11-10-72

S. R. 12

WEATHER Cloudy-Rain

SEC. 18 Liberty Twp.

TEMP. 50°

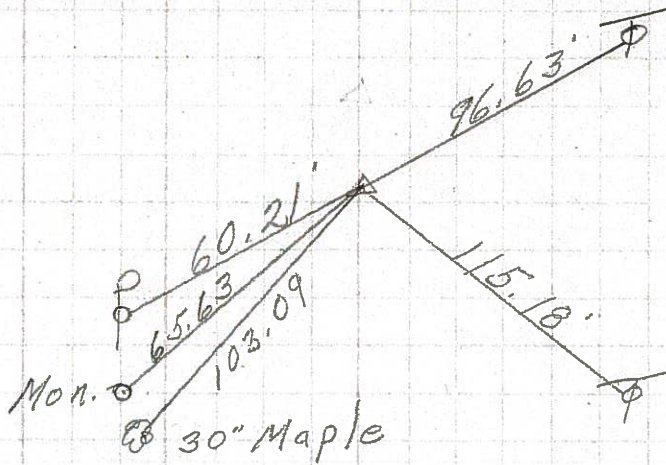
DESCRIPTION Fostoria to Sandusky Co. Line

JOB NO.

LEFT CENTER LINE RIGHT

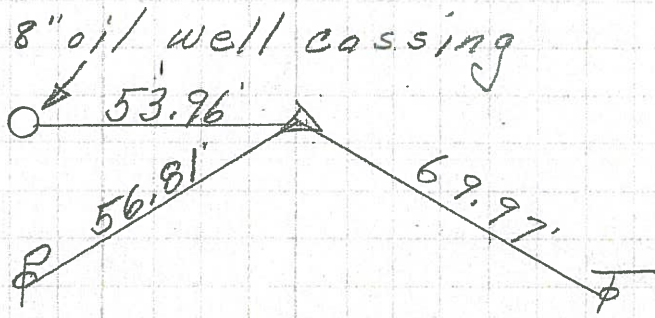
40+56.75 (old)
P.K. Nail on
E of R/W

56



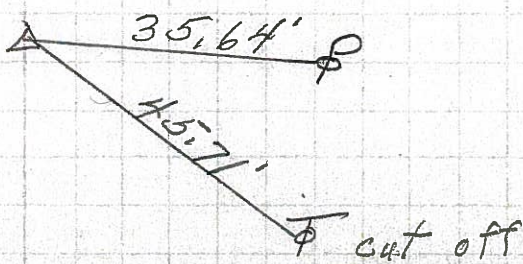
P.I.
511+62.45
2 1/2" iron pipe
on E of R/W
P.K. Nail on top

55



P.I.
482+10.45
Mine spk. on Top
Δ = 0° 07' Rt.

54



PERSONNEL TITLE PERSONNEL TITLE

Schneider

COUNTY Seneca

DATE 10-14-68

Barbour

S. R. 12

WEATHER Fair

Redding

SEC. Easteria to Seneca Line

TEMP. 65°

Potts

DESCRIPTION Ties for Control Points

JOB NO.

LEFT

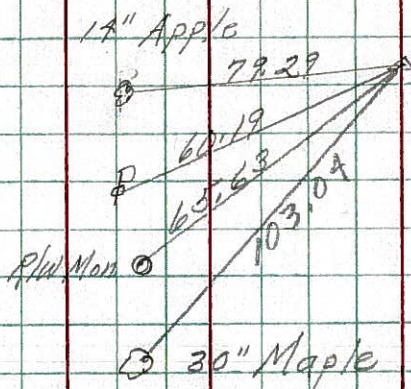
CENTER LINE

RIGHT

56

40+56.75
Ed. P.K. Nail
Rt. of § on top

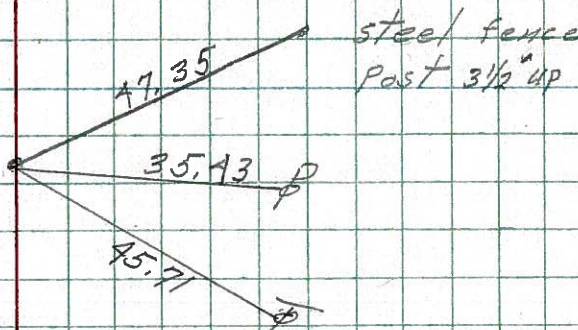
8074



54

392+33.35 old
Ed. P.K. on top

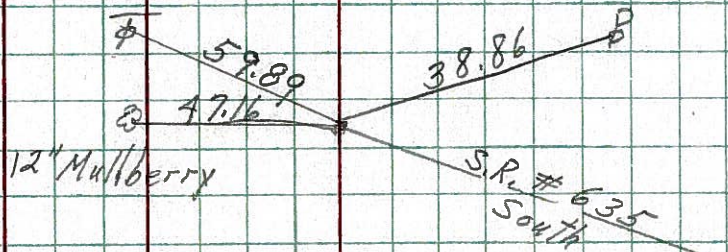
8073



53

383+00 (old)
Ed. spk. on top

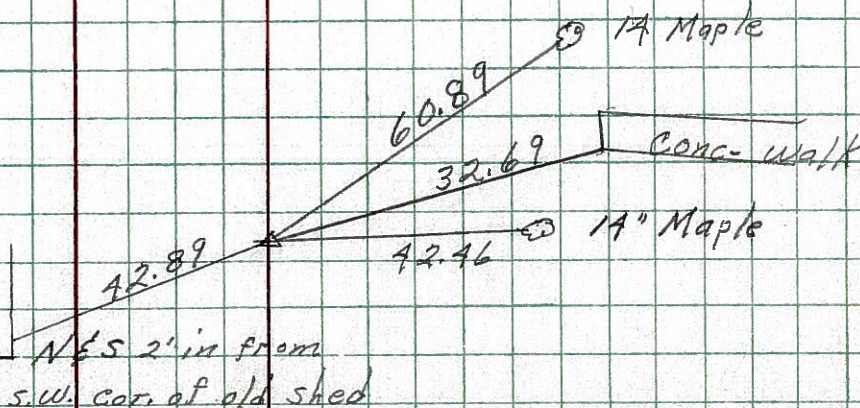
8072



52

377+23 (old)
Ed. spk. on top

8071



PERSONNEL	TITLE	PERSONNEL	TITLE
Schneider		Potts	
Mosser			
Barbour			
Redding			

COUNTY Seneca DATE 6-16-67

S. R. 12 WEATHER Hot

SEC. 9.41-10.04 TEMP. 95°

DESCRIPTION Ties for Control Points

JOB NO.

LEFT

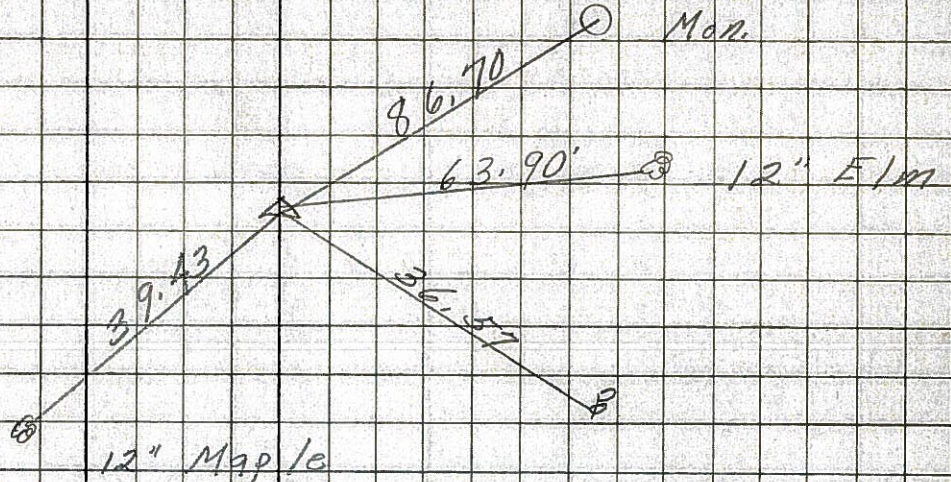
CENTER LINE

RIGHT



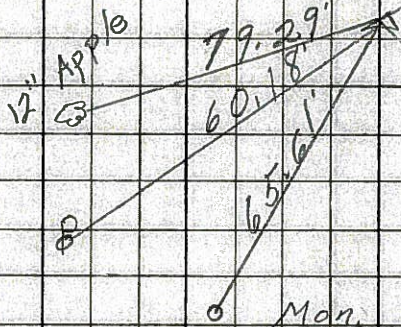
57

P.I.
 583 + 84
 Fd. P.K. Nail
 SET 10/20/67
 MINE SPK



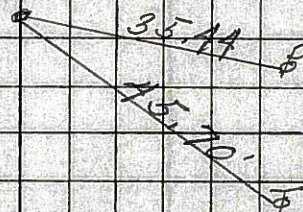
56

P.I.
 560 + 25
 Fd. P.K. Nail
 SET 10/20/67
 MINE SPK



54

P.O. T.
 498 + 98
 Fd. P.K. Nail
 SET 10/20/67
 MINE SPK



PERSONNEL TITLE PERSONNEL TITLE

COUNTY Seneca DATE

S. R. 12-113 WEATHER

SEC. 232 TEMP.

DESCRIPTION LEFT CENTER LINE RIGHT JOB NO.

Sta. 6+07.48
 P.C. E/w marker 33' 33' E/w marker
 Iron pin on ϕ of E/w #450

Sta. 7+62.2
 P.I. E/w marker 33' 33' E/w marker
 Iron Pin on ϕ of E/w #451

Sta. 9+12.59
 P.T. E/w marker 33' 33' E/w marker
 Iron pin on ϕ of E/w #452

40+57 $\Delta = 0^{\circ}38' A$

(56) Sta. 40+56.75
 P.I. Iron pin on ϕ of E/w #453
 65.61' E/w marker 96.63' E/w marker 65.61' E/w marker

64+02.5 $\Delta = 0^{\circ}31' R$

(57) Sta. 64+19.75
 P.I. Iron pin on ϕ of E/w #454
 31.85' W. 39.6' S.W. 10" maple
 28" Osage Orange Co. Rd

Sta. 81+79.28
 P.C. E/w marker 33' 33' E/w marker
 Iron pin on ϕ of E/w #455

