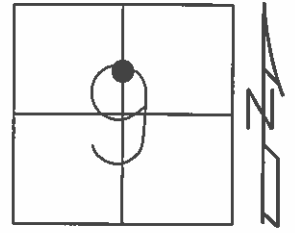


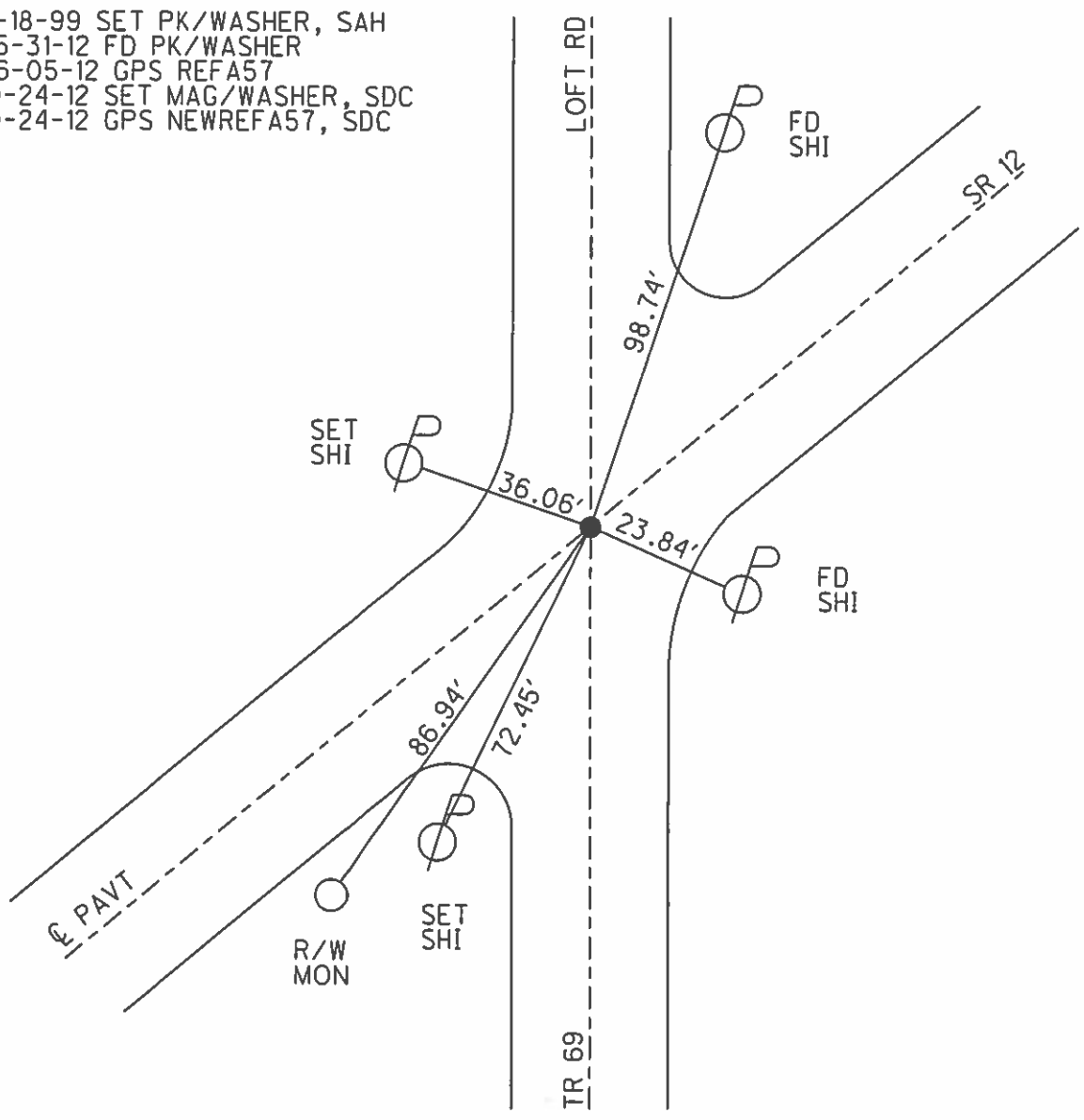
O.D.O.T. DISTRICT 2 SURVEY OFFICE (USE ONLY)

PERSONNEL	REFERENCE NO.	57-A	SHEET	59	OF	70
NOTES	HARBAUGH	DATE	05-31-12	ROUTE	SR 12	
H.C.	CANTEBRURY	WEATHER	CLOUDY	COUNTY	SENECA	
R.C.	COUTCHER	TEMP.	60°	TOWNSHIP	LIBERTY	
				SECTION	9	
				T	3	N
				R	14	E

TYPE MONUMENT _____ PK/WASHER _____
 ON SURFACE - BELOW _____ ON _____
 LEFT - ϕ PAV'T - RIGHT _____ ON _____
 _____ TO _____ EDGE PAVEMENT
 S.L.M. _____ 586+59 _____
 GRID: NORTHING: 572107.749 EASTING: 1761027.200



11-18-99 SET PK/WASHER, SAH
 05-31-12 FD PK/WASHER
 06-05-12 GPS REFA57
 10-24-12 SET MAG/WASHER, SDC
 10-24-12 GPS NEWREFA57, SDC



O.D.O.T. DISTRICT 2 SURVEY OFFICE

PERSONNEL

REFERENCE NO. 57-A

SHEET 50 OF 52

NOTES LOEHRKE

H.C. VAN DUSEN

R.C. ROUSOS

DATE 8-18-99

WEATHER Sunny

TEMP. +73°

ROUTE S.R. 12

COUNTY Seneca

TOWNSHIP Liberty

SECTION 9

T 3 N R 14 E

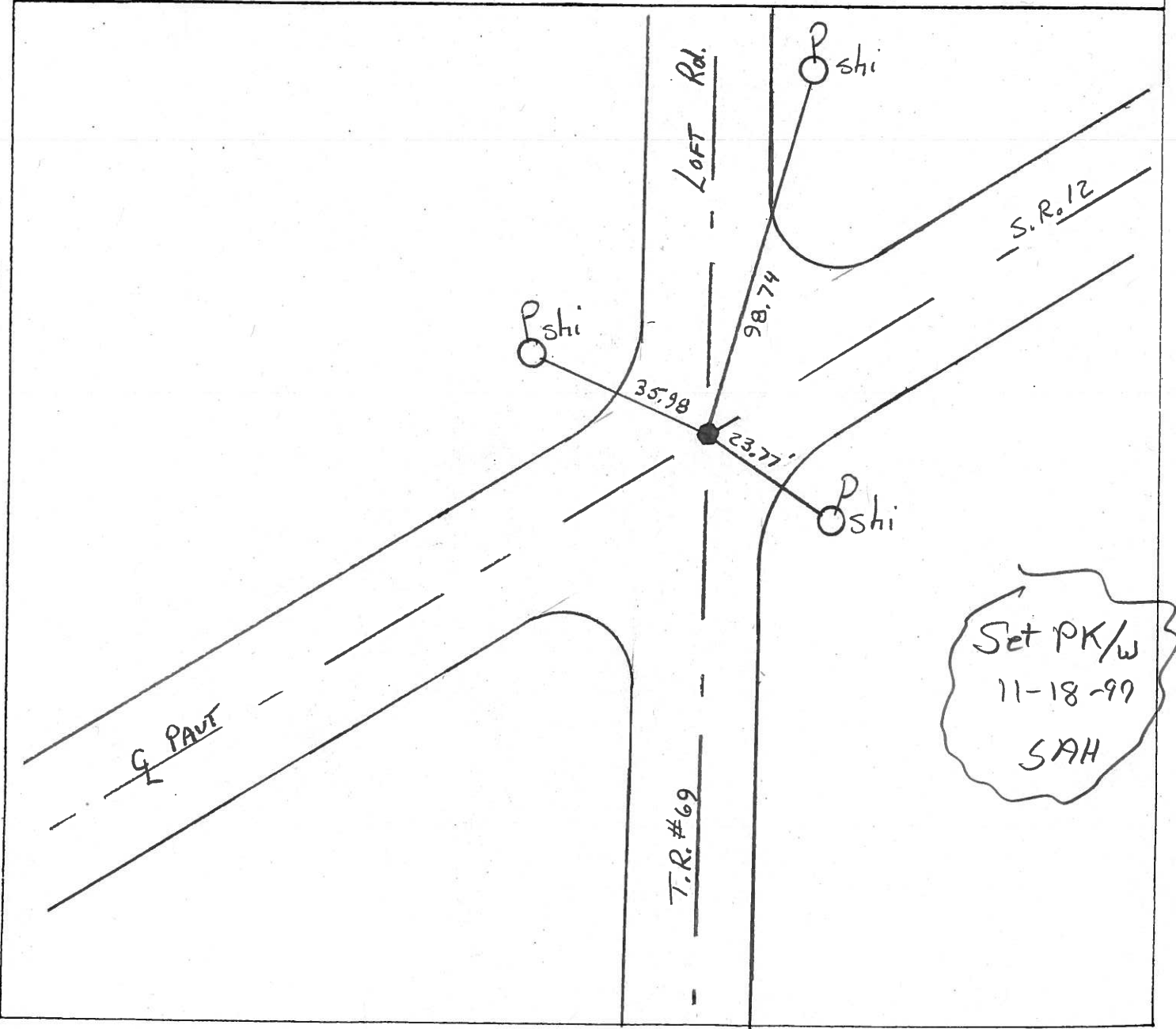
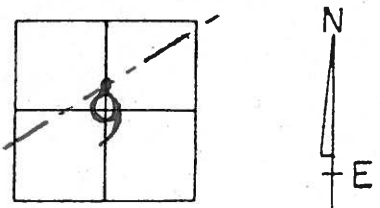
TYPE MONUMENT P.K./WASHER

ON SURFACE - BELOW Yes

~~LEFT~~ - & PAV'T. - RIGHT Both

TO EDGE PAVEMENT

S.L.M. 586+59



O.D.O.T. DISTRICT 2 SURVEY OFFICE

PERSONNEL _____

REFERENCE NO. _____

SHEET _____ OF _____

NOTES Cronin

H.C. Ripple

R.C. Barbour

Geyman

DATE 9/14/87

WEATHER Sunny

TEMP. 73°

ROUTE 12

COUNTY Seneca

TOWNSHIP Liberty

SECTION 9

T3 N R 14 E

TYPE MONUMENT PK. & washer

ON SURFACE - BELOW on surface

LEFT - to PAV'T. - RIGHT to Pav't.

TO _____ EDGE PAVEMENT

S.L.M. _____

