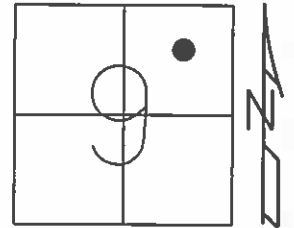


O.D.O.T. DISTRICT 2 SURVEY OFFICE (USE ONLY)

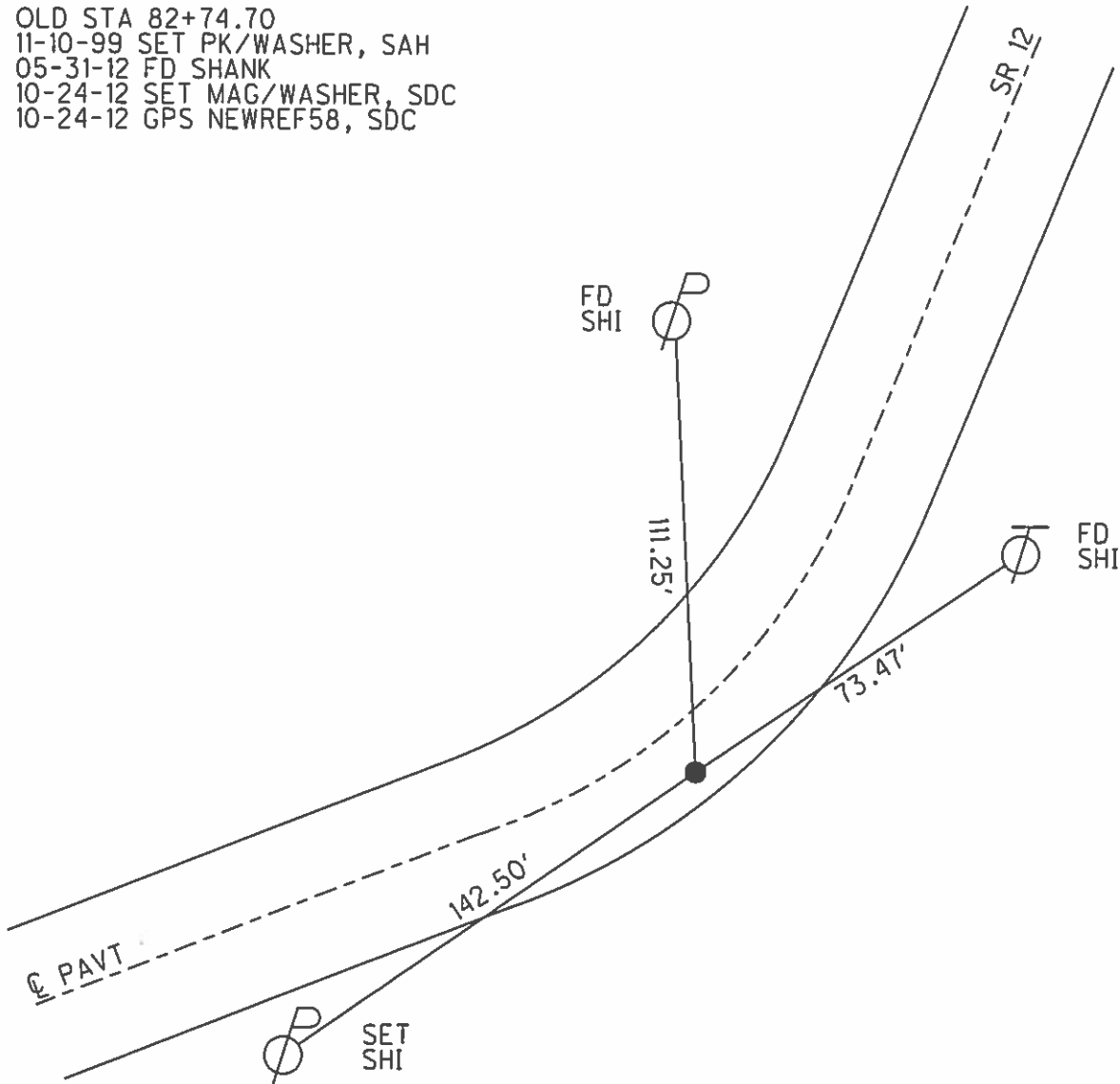
PERSONNEL	REFERENCE NO.	<u>58</u>	SHEET	<u>60</u>	OF	<u>70</u>
NOTES	<u>HARBAUGH</u>	DATE	<u>05-31-12</u>	ROUTE	<u>SR 12</u>	
H.C.	<u>CANTERBURY</u>	WEATHER	<u>CLOUDY</u>	COUNTY	<u>SENECA</u>	
R.C.	<u>COUTCHER</u>	TEMP.	<u>60°</u>	TOWNSHIP	<u>LIBERTY</u>	
				SECTION	<u>9</u>	
				T	<u>3</u>	N
				R	<u>14</u>	E

TYPE MONUMENT \_\_\_\_\_ SHANK \_\_\_\_\_  
 ON SURFACE - BELOW \_\_\_\_\_ ON \_\_\_\_\_  
 LEFT - Q PAV'T - RIGHT \_\_\_\_\_ 5.7'  
5.4' TO RT EDGE PAVEMENT  
 S.L.M. \_\_\_\_\_ 602+63

GRID: NORTHING: 572962.397 EASTING: 1762489.528



OLD STA 82+74.70  
 11-10-99 SET PK/WASHER, SAH  
 05-31-12 FD SHANK  
 10-24-12 SET MAG/WASHER, SDC  
 10-24-12 GPS NEWREF58, SDC



O.D.O.T. DISTRICT 2 SURVEY OFFICE

PERSONNEL

REFERENCE NO. 58

SHEET 51 OF 52

NOTES LOEHRKE

H.C. VAN DUSEN

DATE 8-18-99

ROUTE S.R. 12

R.C. Rousos

WEATHER FAIR

COUNTY SENECA

TEMP. +73°

TOWNSHIP Liberty

SECTION 9

T 3 N R 14 E

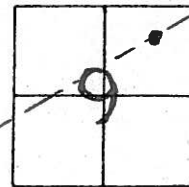
TYPE MONUMENT P.K. / WASHER

ON SURFACE - ~~BELOW~~ Yes

~~LEFT~~ - & PAV'T. - RIGHT 6.0' Rt

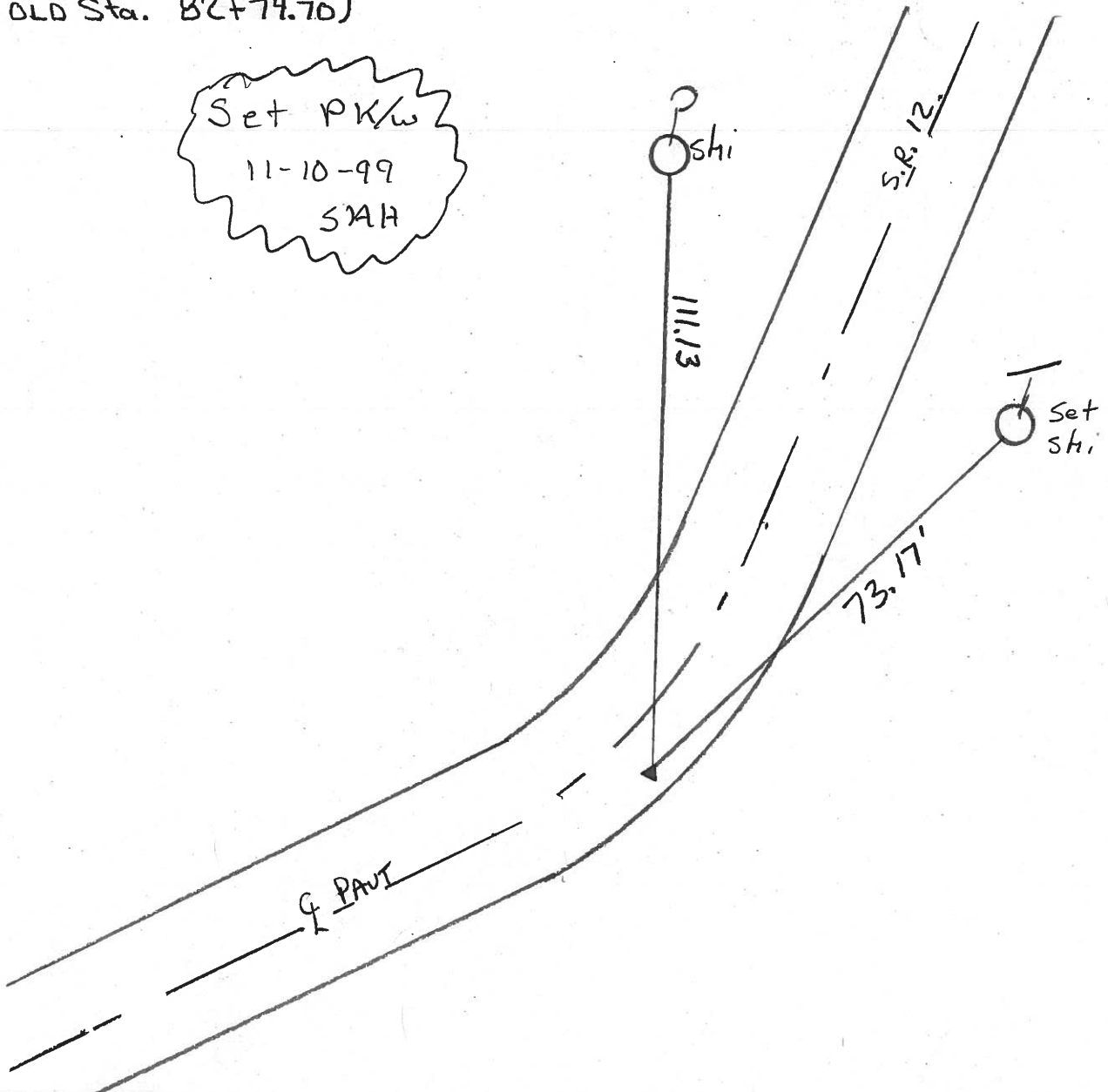
4.8' TO Rt EDGE PAVEMENT

S.L.M. 602 + 63



(OLD Sta. 82+74.70)

Set PKW  
11-10-99  
SAH



O.D.O.T. DISTRICT 2 SURVEY OFFICE

PERSONNEL

REFERENCE NO. 58 SHEET      OF     

NOTES Cronin

H.C. Ripple

R.C. Geyman

DATE 9/18/87

WEATHER cloudy-windy

TEMP. 73°

ROUTE 12

COUNTY Seneca

TOWNSHIP Liberty

SECTION 9

T 3 N R 14 E

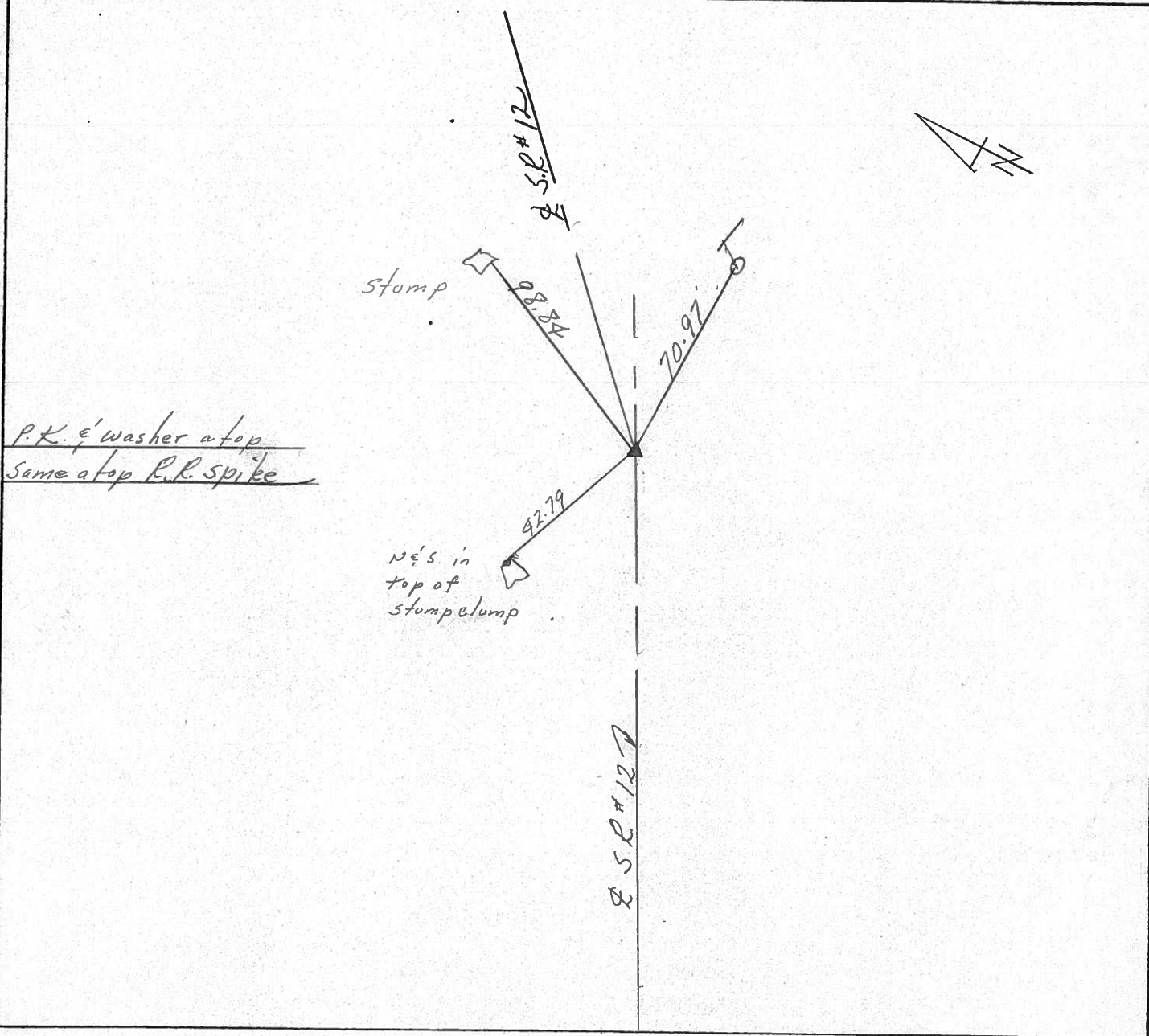
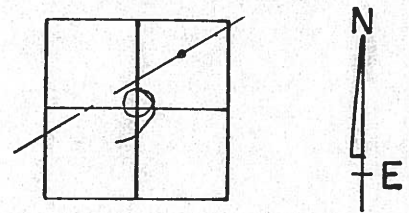
TYPE MONUMENT P.K. washer

ON SURFACE - BELOW on surface

LEFT - ☉ PAV'T. - RIGHT ☉ R.T. & Pav't.

     TO      EDGE PAVEMENT

S.L.M. old Sta. 82+74.70



PERSONNEL TITLE PERSONNEL TITLE

COUNTY Seneca

DATE 12-5-72

S. R. 12

WEATHER cloudy - Rain

SEC. 9 Liberty Twp.

TEMP. 35°

DESCRIPTION Fostoria to Sandusky Co. Line

JOB NO.

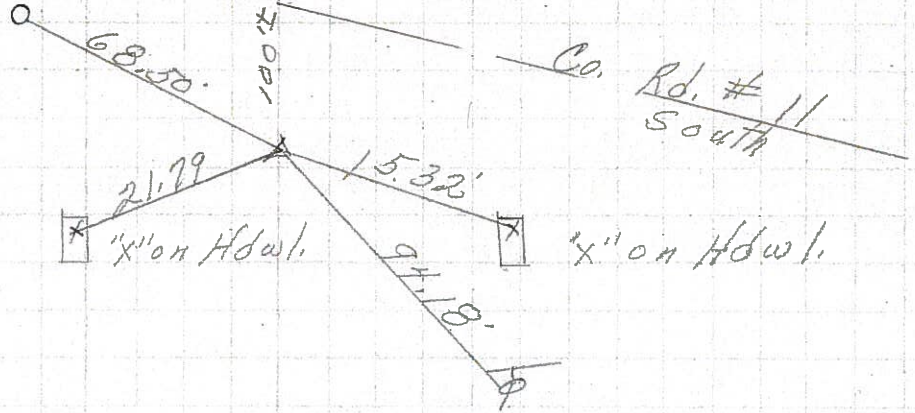
LEFT

CENTER LINE

RIGHT

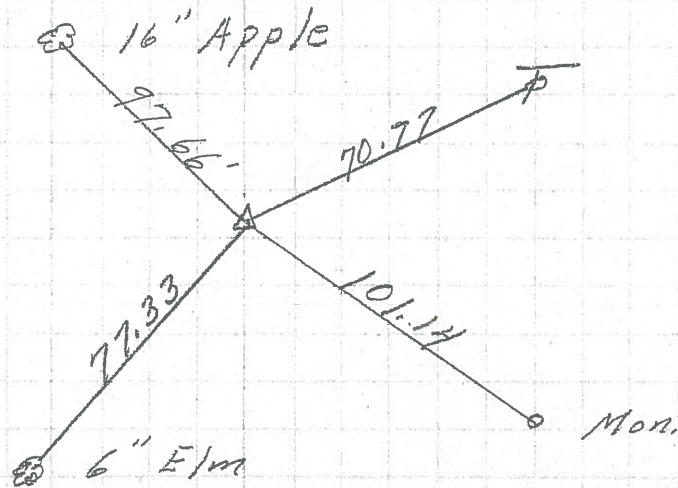
P.I.  
96+13.4 (old)  
P.K. Nail on top  
on  $\phi$  R/W  
3' Rt. of  $\phi$

59



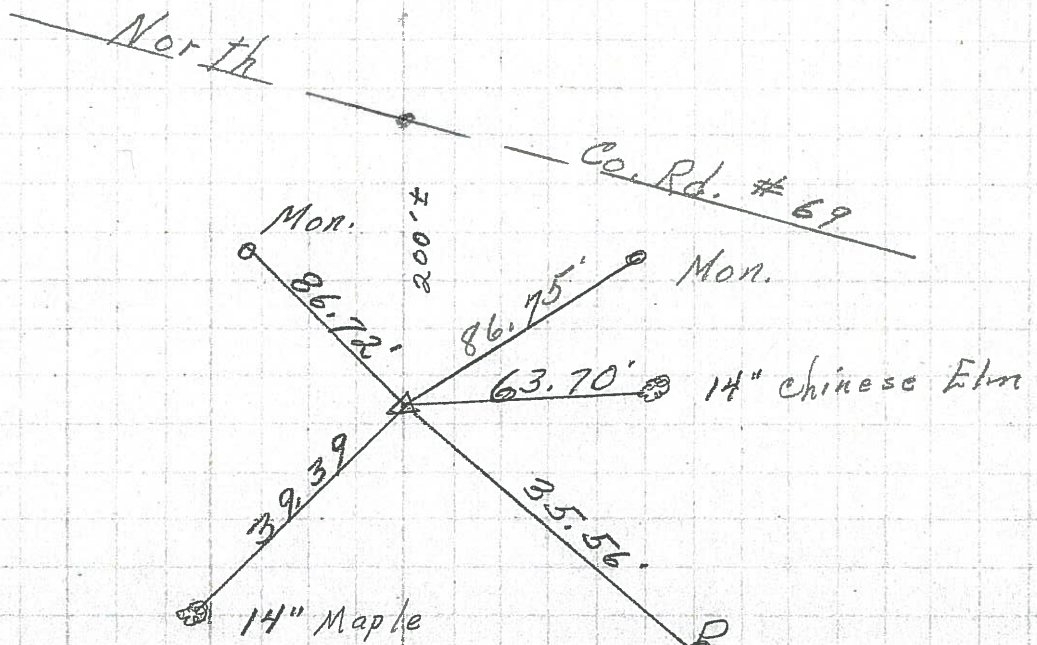
P.I.  
82+74.70 (old)  
Fd. spk. on top  
on  $\phi$  of R/W

58



P.I.  
64+19.75 (old)  
Fd. spk. on top  
on  $\phi$  R/W

57



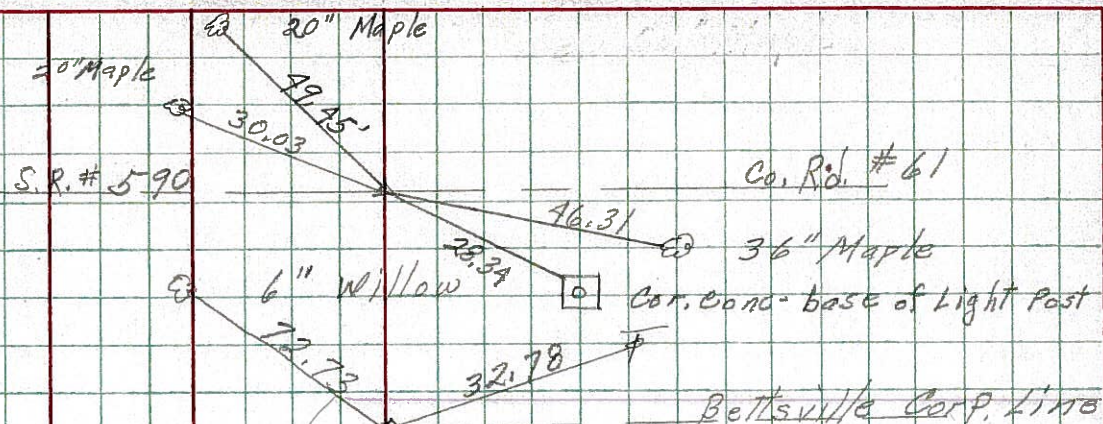
PERSONNEL TITLE PERSONNEL TITLE COUNTY Seneca DATE 10-19-68  
Schneider \_\_\_\_\_ Barbour \_\_\_\_\_ S. R. 12 WEATHER Fair  
Redding \_\_\_\_\_ Potts \_\_\_\_\_ SEC. Fosteria to San. Co. Line TEMP. 65°  
 DESCRIPTION Ties for Control Points JOB NO. \_\_\_\_\_

LEFT CENTER LINE RIGHT

51

P.K. Nail

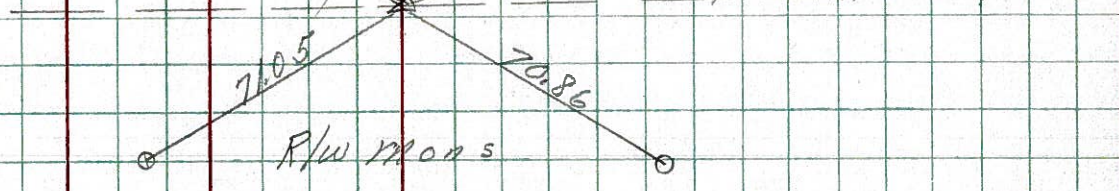
8079



50

114+63.15  
P.K. Nail on top

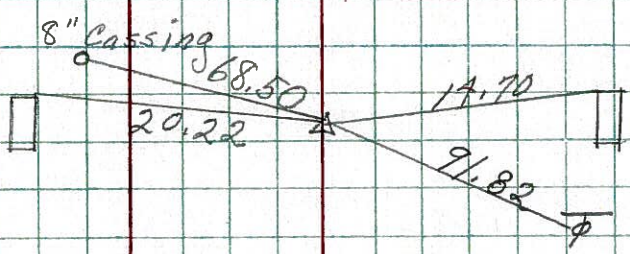
8078



59

96+13.9  
Fd. P.K. Nail  
Rt. of  $\square$  on top

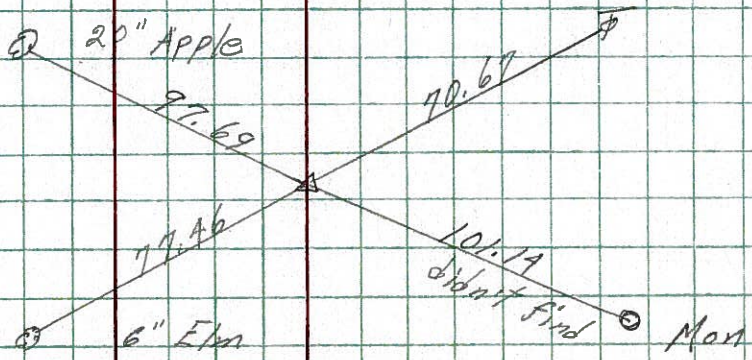
8077



58

82+79.70  
Fd. P.K. Nail  
on top

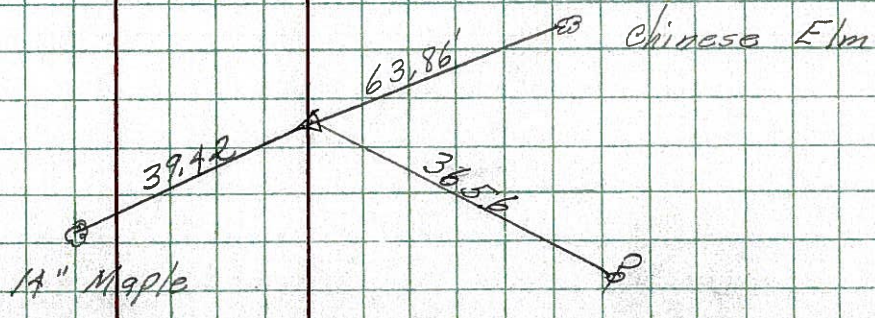
8076



57

64+19.75  
Fd. P.K. Nail  
on top

8075

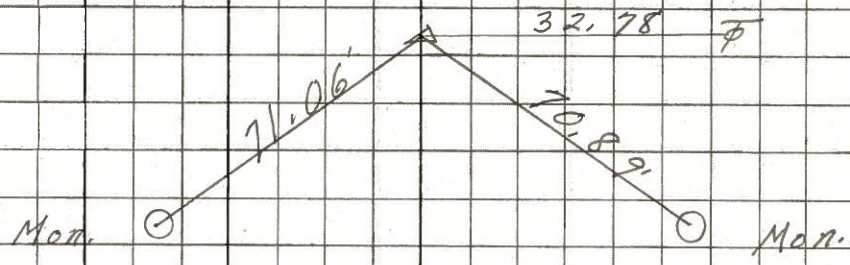


PERSONNEL	TITLE	PERSONNEL	TITLE	COUNTY	DATE	WEATHER	TEMP.
Schneider		Pott's		Seneca	6-16-67	Hot	95°
Mosser				S. R. 12			
Barbour				SEC. 9.41-10.04			
Redding							

DESCRIPTION Ties for Control Points JOB NO. \_\_\_\_\_

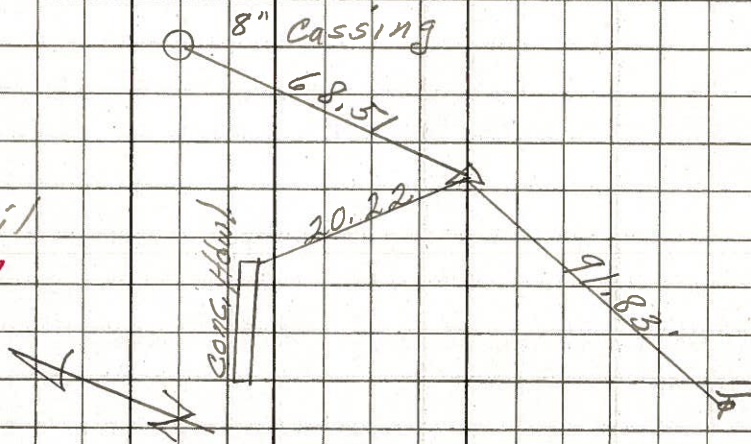
(60)

P.I.  
634+20  
Fd. P.K. Nail  
SET 10/20-67  
MINE SPK



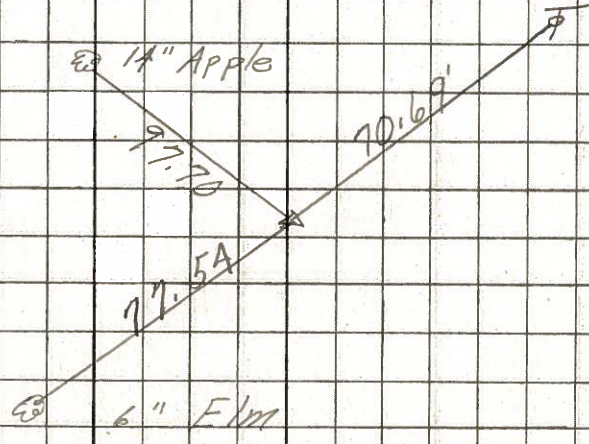
(59)

P.I.  
615+73  
Fd. P.K. Nail  
SET 10-20-67



(58)

P.I.  
602+39  
Fd. P.K. Nail  
SET 10-20-67



PERSONNEL TITLE PERSONNEL TITLE

COUNTY Seneca

DATE

S. R. 12-113

WEATHER

SEC. 222

TEMP.

DESCRIPTION

LEFT

CENTER LINE

RIGHT

JOB NO.

58

Sta. 82+74.7

P.I.

Iron pin on  $\frac{1}{2}$  of E/W

#456

82+62.4  $\Delta = 7^{\circ}35' L.$

R/W marker

100.93' N.

100.9' E.

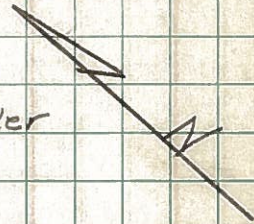
R/W marker

100.93' W.

R/W marker

100.91' S.

R/W marker



Sta. 83+69.61

P.T.

Iron pin on  $\frac{1}{2}$  of E/W

#457

E/W marker

33'

33'

R/W marker

59

Sta. 96+13.4

P.I.

Iron pin on  $\frac{1}{2}$  of E/W

#458

R/W marker

33'

33'

R/W marker

Co. Rd. 5.

20.15'

set P.K.

14.7'

Hdwl.

Hdwl.

60

Sta. 114+63.15

P.I.

Iron Pin on  $\frac{1}{2}$  of E/W  
Corp. Limits of  
Bettsville

#459

6" tree

Poplar  
24" Apple

83.15' N.

57.7' W.

71.1' W. set P.K.

R/W marker

70.95' S.

R/W marker

End of Sec. R.

PERSONNEL TITLE PERSONNEL TITLE

COUNTY Seneca DATE

S. R. 12-113 WEATHER

SEC. TEMP.

DESCRIPTION LEFT CENTER LINE RIGHT JOB NO.

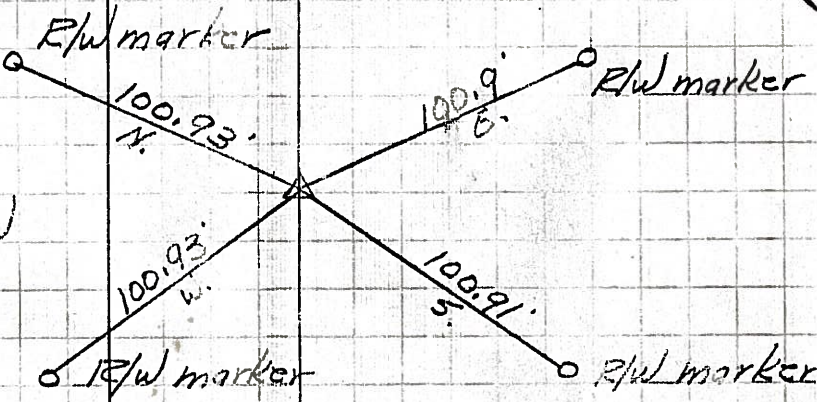
58

Sta. 82+74.7

P.I.

Iron pin on E/W

#456

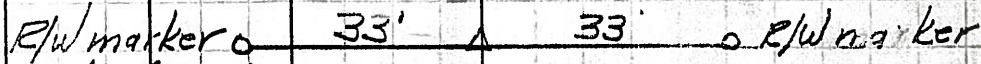


Sta. 83+69.61

P.T.

Iron pin on E/W

#457



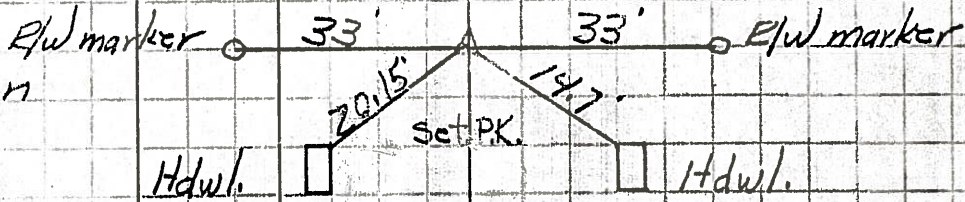
59

Sta. 96+13.4

P.I.

Iron pin on E/W

#458



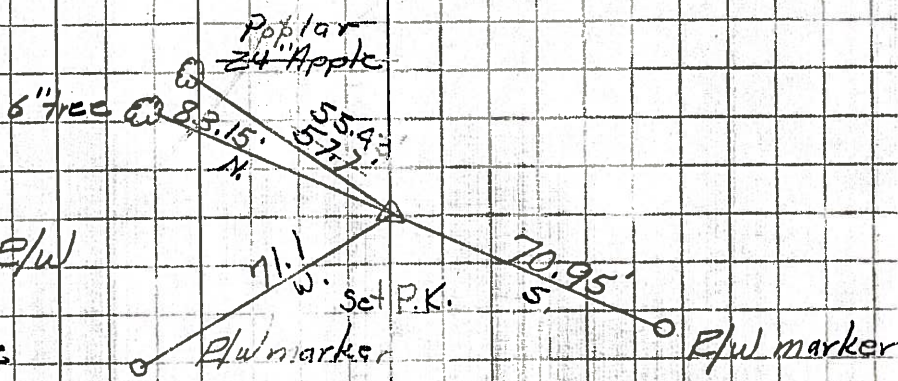
60

Sta. 114+63.15

P.I.

Iron Pin on E/W Corp. limits of Bettsville

#459



End of Sec. R.