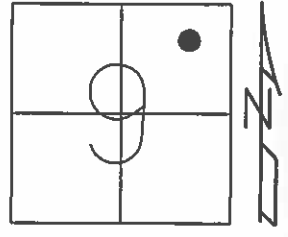


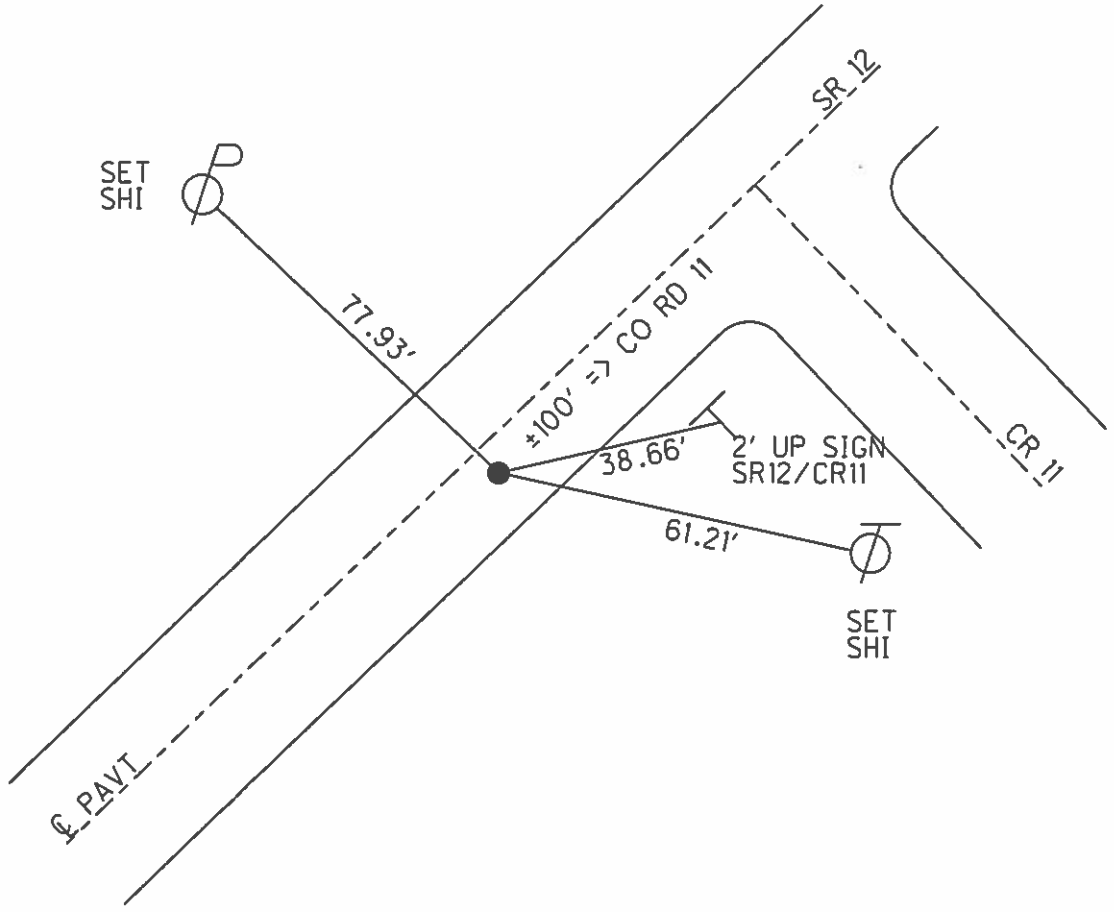
O.D.O.T. DISTRICT 2 SURVEY OFFICE (USE ONLY)

PERSONNEL	REFERENCE NO.	<u>59</u>	SHEET	<u>61</u>	OF	<u>70</u>
NOTES	<u>HARBAUGH</u>	DATE	<u>05-31-12</u>	ROUTE	<u>SR 12</u>	
H.C.	<u>CANTERBURY</u>	WEATHER	<u>CLOUDY</u>	COUNTY	<u>SENECA</u>	
R.C.	<u>COUTCHER</u>	TEMP.	<u>60°</u>	TOWNSHIP	<u>LIBERTY</u>	
				SECTION	<u>9</u>	
				T	<u>3</u>	R
					<u>N</u>	<u>14</u>
					<u>E</u>	

TYPE MONUMENT _____ PK/WASHER _____
 ON SURFACE - BELOW _____ ON _____
 LEFT - Q PAV'T - RIGHT 6.7'
4.7' TO RT EDGE PAVEMENT
 S.L.M. _____ 616+04 _____
 GRID: NORTHING: 573819.670 EASTING: 1763517.717



- 04-23-03 SET MAG/WASHER, DCH
- 05-31-12 FD PK/WASHER
- 06-05-12 GPS REF59
- 10-24-12 SET MAG/WASHER, SDC
- 10-24-12 GPS NEWREF59, SDC



O.D.O.T. DISTRICT 2 SURVEY OFFICE

PERSONNEL _____

REFERENCE NO. 59

SHEET 1 OF 9

NOTES HOMAN

DATE 4-23-03

ROUTE 12

H.C. BROWN

WEATHER SUNNY

COUNTY SENECA

R.C. BEAUMONT

TEMP. 45°

TOWNSHIP LIBERTY

SECTION 9

T 3 N R 14 E

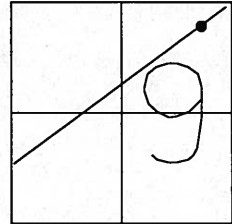
TYPE MONUMENT P.K. NAIL & WASHER

ON SURFACE ~~-BELOW~~ ON SURFACE

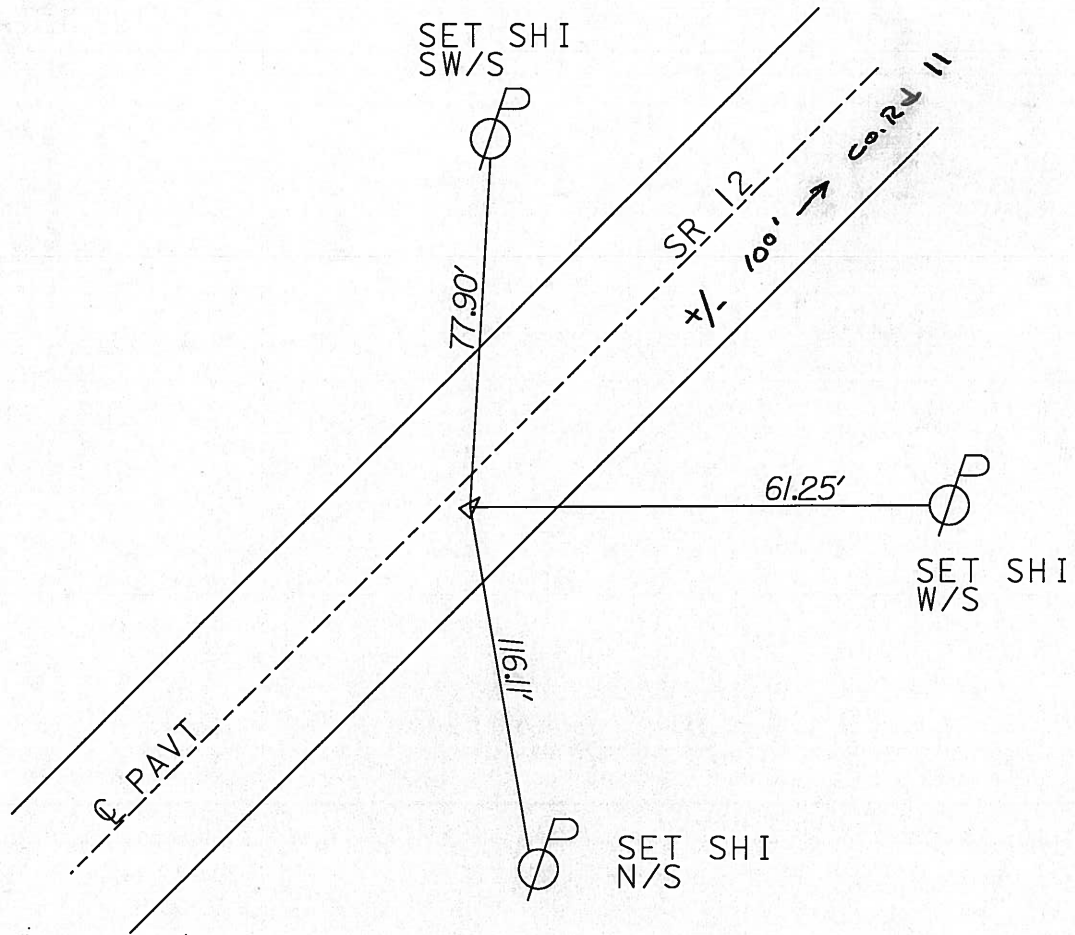
~~LEFT~~ - Q PAV'T - RIGHT 4.2' RT C/L

6.7 TO RT EDGE PAVEMENT

S.L.M. 616+57



SET MAG & WASHER
4-23-03 DCH



Resurfaced 2003

O.D.O.T. DISTRICT 2 SURVEY OFFICE

PERSONNEL

REFERENCE NO. 59

SHEET 52 OF 52

NOTES LOEHRKE

H.C. VAN DUSEN

R.C. Rausas

DATE 8-18-99

WEATHER Nice

TEMP. 73°

ROUTE S.R. 12

COUNTY Seneca

TOWNSHIP Liberty

SECTION 9

T. 3 N. R. 14 E

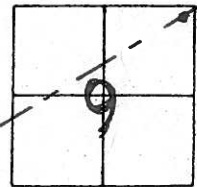
TYPE MONUMENT P.K./WASHER

ON SURFACE - ~~BELOW~~ Yes

~~LEFT~~ - 0 PAV'T. - RIGHT 4.0' Rt

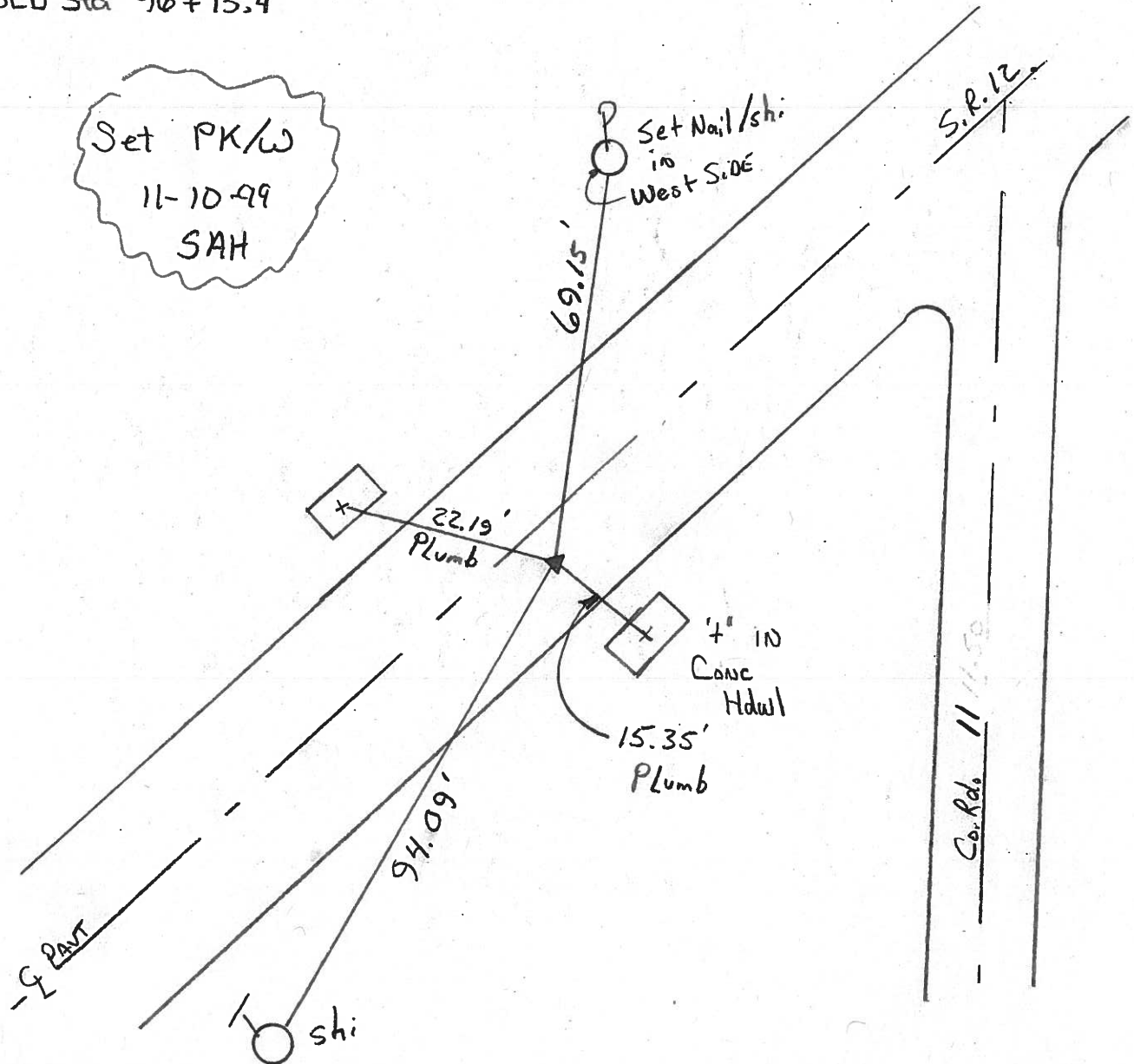
6.4 TO Rt EDGE PAVEMENT

S.L.M. 616+09



OLD Sta 96+13.4

Set PK/W
11-10-99
SAH



O.D.O.T. DISTRICT 2 SURVEY OFFICE

PERSONNEL

REFERENCE NO. 59

SHEET OF

NOTES Cronin

H.C. Pipple

R.C. Geyman

DATE 9/18/87

WEATHER cloudy-windy

TEMP. 73°

ROUTE 12

COUNTY Seneca

TOWNSHIP Liberty

SECTION 9

T 3 N R 14 E

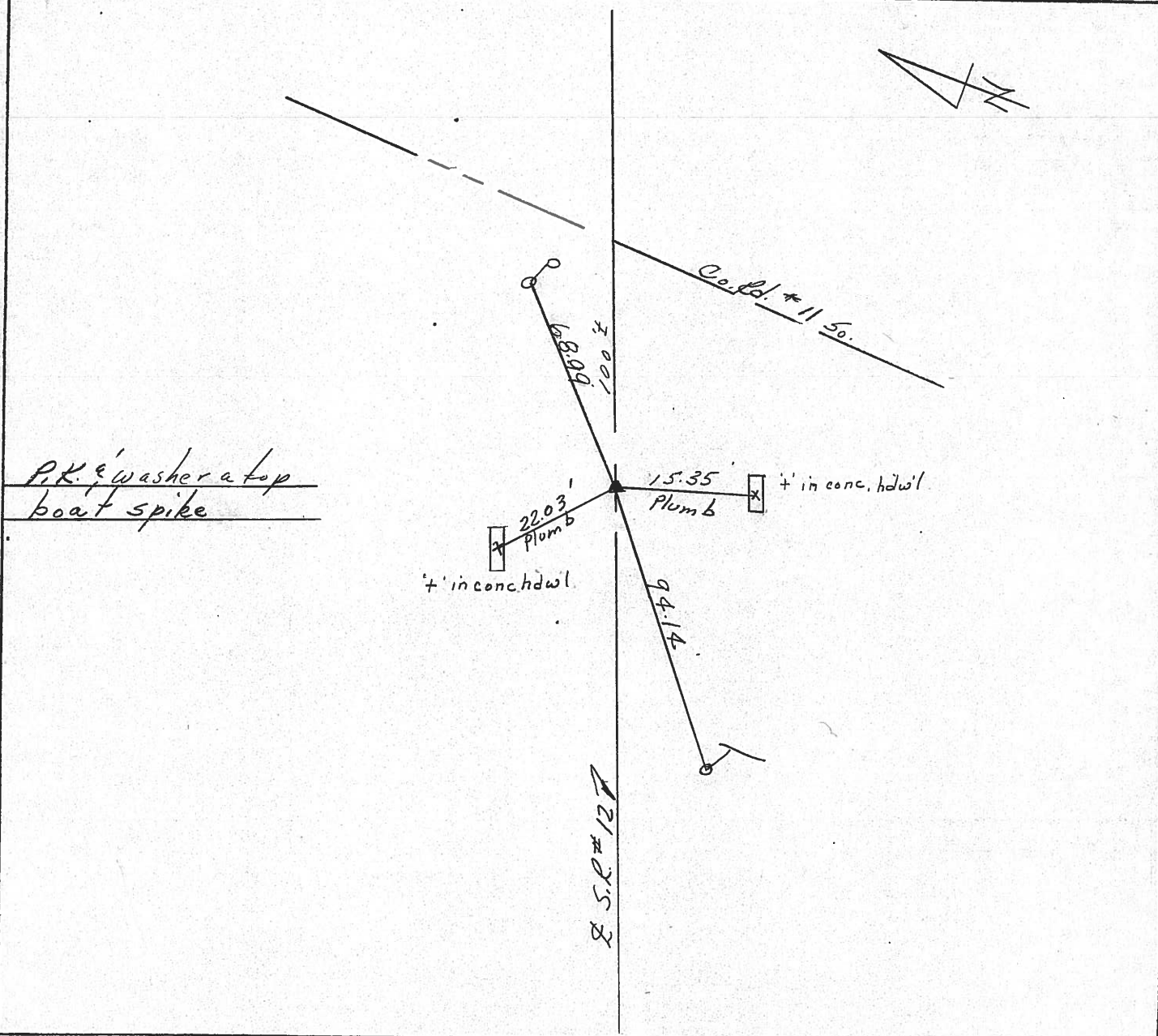
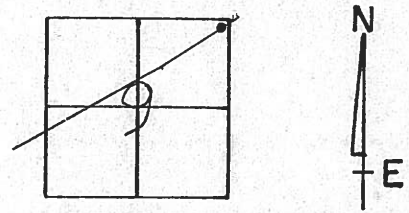
TYPE MONUMENT P.K. & washer

ON SURFACE - BELOW on surface

LEFT - ☉ PAV'T. - RIGHT 3' Rt. & Pavt.

TO EDGE PAVEMENT

S.L.M. old Sta. 96+13.4



P.K. & washer a top boat spike

in conc. hdwl.

in conc. hdwl.

S.R. # 12

PERSONNEL TITLE PERSONNEL TITLE

COUNTY Seneca DATE 12-5-72

S. R. 12 WEATHER Cloudy-Rain

SEC. 9 Liberty Twp. TEMP. 35°

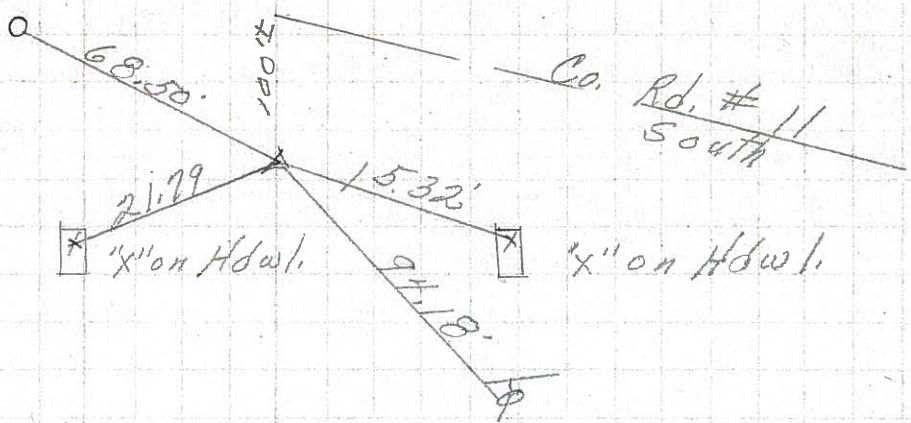
DESCRIPTION Easting to Sandusky Co. Line

LEFT CENTER LINE RIGHT

JOB NO.

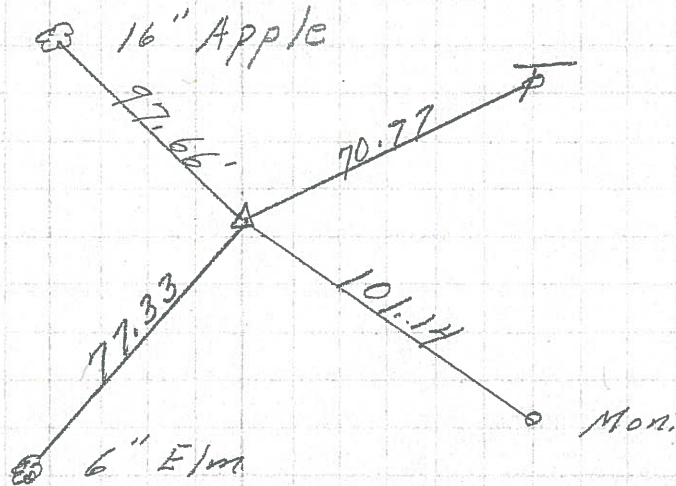
P.I.
96+13.4 (old)
P.K. Nail on top
on & R/W
3' Pt. of &

59



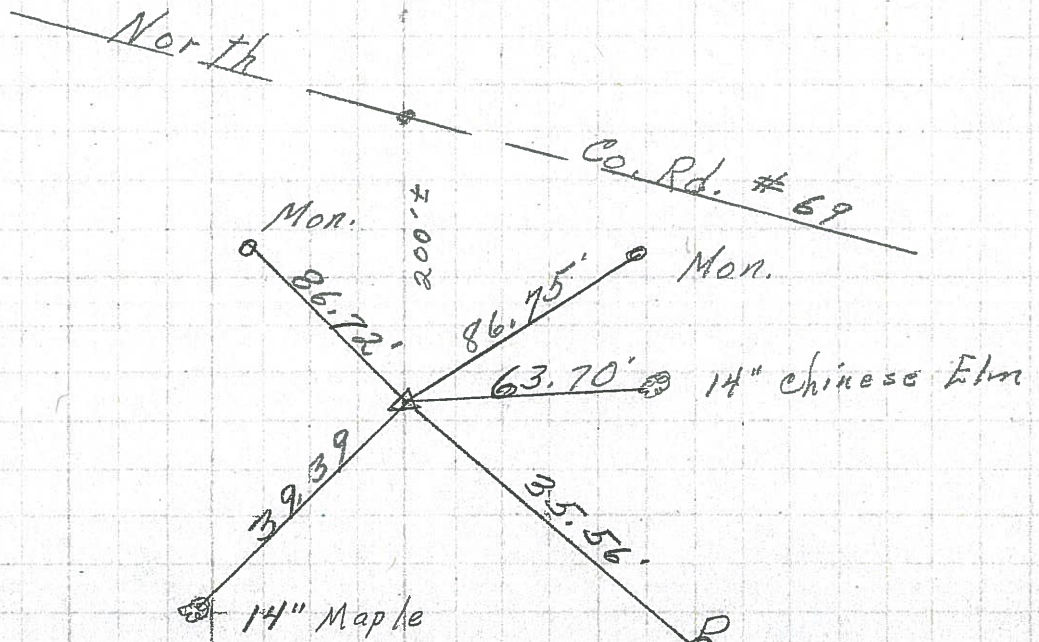
P.I.
82+74.70 (old)
Fd. spk. on top
on & of R/W

58



P.I.
64+19.75 (old)
Fd. spk. on top
on & R/W

57



PERSONNEL TITLE PERSONNEL TITLE

COUNTY Seneca DATE 10-14-68

Schneider

Barbour

Redding

Potts

S. R. 12

WEATHER Fair

SEC. Fostoria to San. Co. Line TEMP. 65°

DESCRIPTION Ties for Control Points

JOB NO.

LEFT

CENTER LINE

RIGHT

61

P.K. Nail

8079

60

114+63.15
P.K. Nail on top

8078

59

96+13.4
Ed. P.K. Nail
Rt. of ϕ on top

8077

58

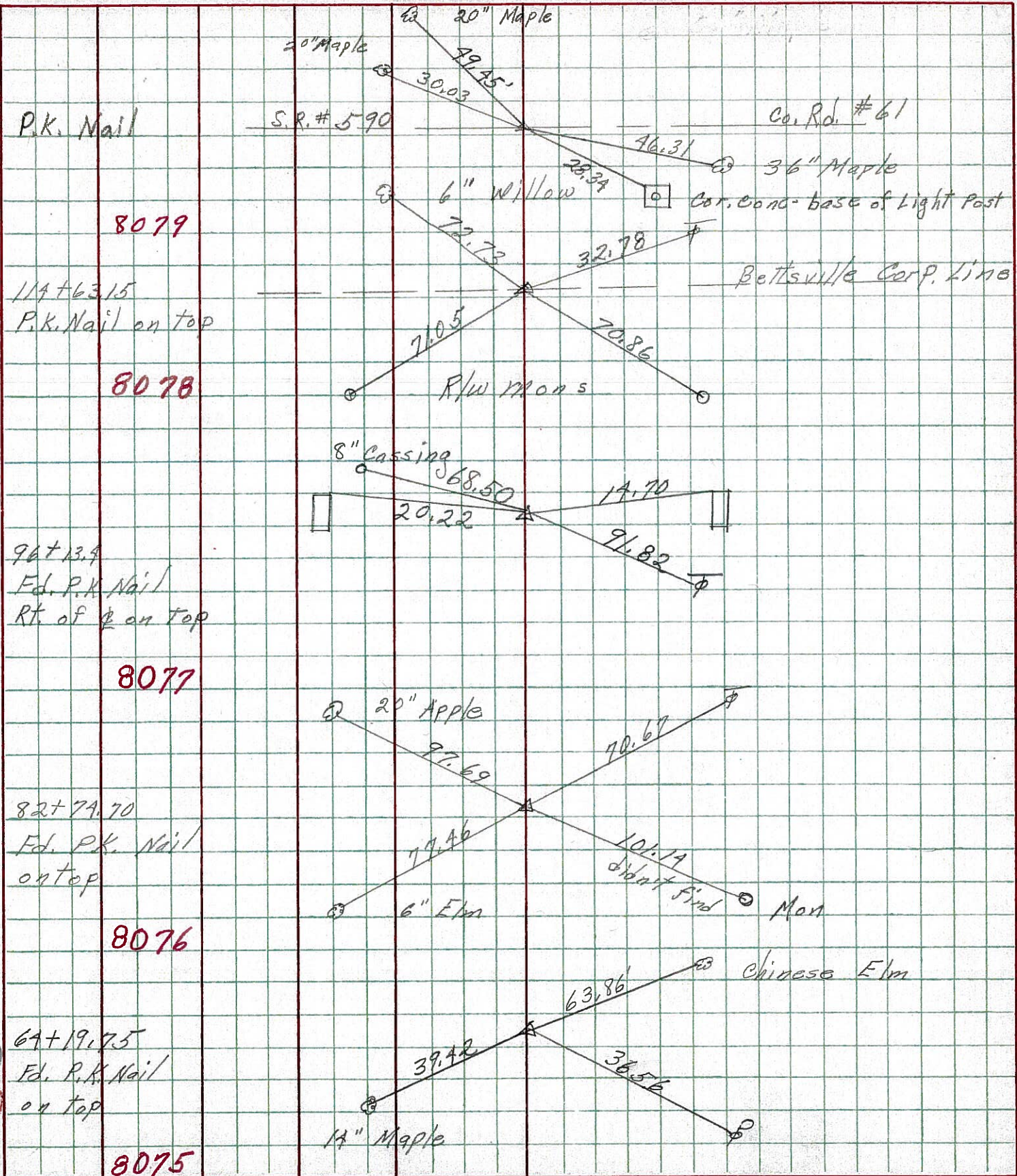
82+74.70
Ed. P.K. Nail
on top

8076

57

64+19.75
Ed. P.K. Nail
on top

8075

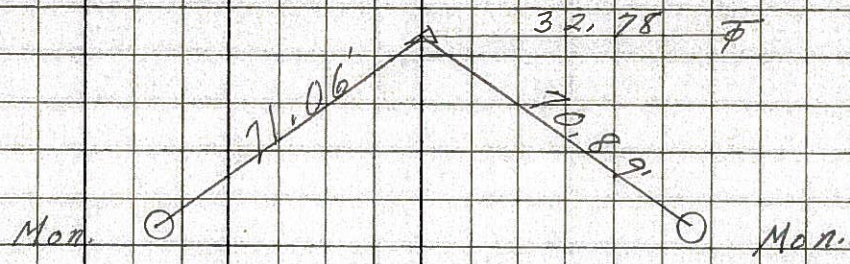


PERSONNEL	TITLE	PERSONNEL	TITLE	COUNTY	DATE
Schneider		Potts		Seneca	6-16-67
Mosser				S. R. 12	WEATHER Hot
Barbour				SEC. 9.41-10.04	TEMP. 95°
Redding					

DESCRIPTION Ties for Control Points JOB NO. _____

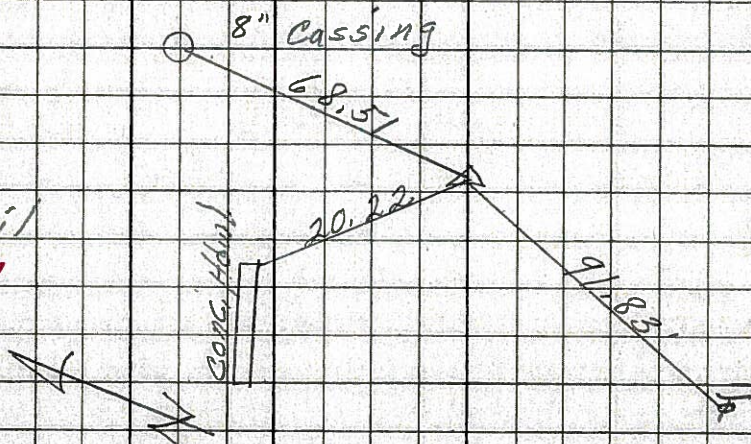
(60)

P.I.
634+20
Fd. P.K. Nail
SET 10/20-67
MINE SPK



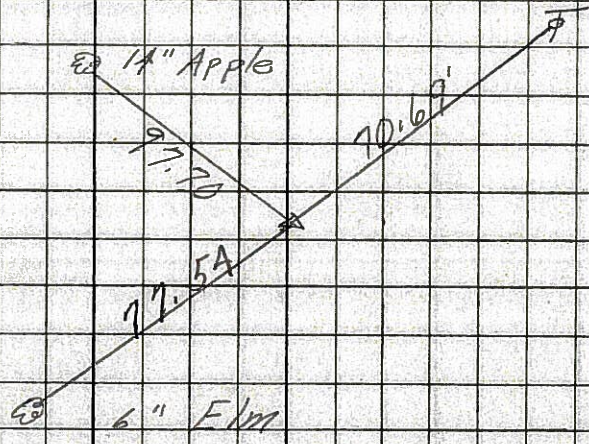
(59)

P.I.
615+73
Fd. P.K. Nail
SET 10-20-67



(58)

P.I.
602+39
Fd. P.K. Nail
SET 10-20-67



PERSONNEL TITLE PERSONNEL TITLE

COUNTY Seneca

DATE

S. R. 12-113

WEATHER

SEC.

TEMP.

DESCRIPTION

LEFT

CENTER LINE

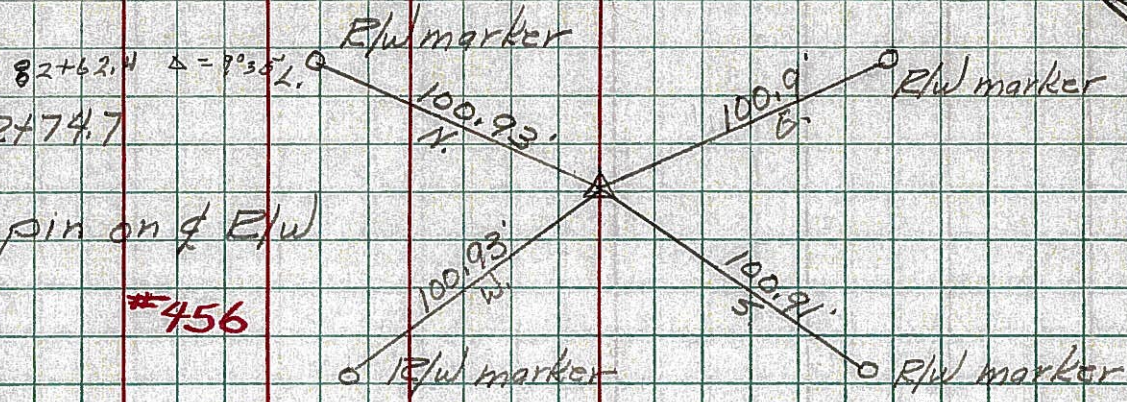
RIGHT

JOB NO.

58

Sta. 82+74.7
P.I.
Iron pin on ϕ E/w

#456



Sta. 83+69.61
P.I.
Iron pin on ϕ of E/w

#457

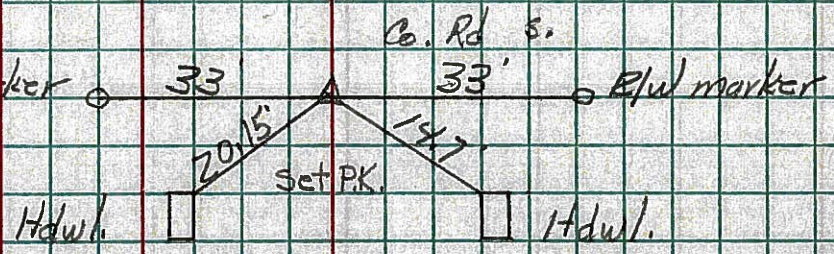
97+32.6 $\Delta = 0^{\circ}46' L$



59

Sta. 96+13.4
P.I.
Iron pin on ϕ of E/w

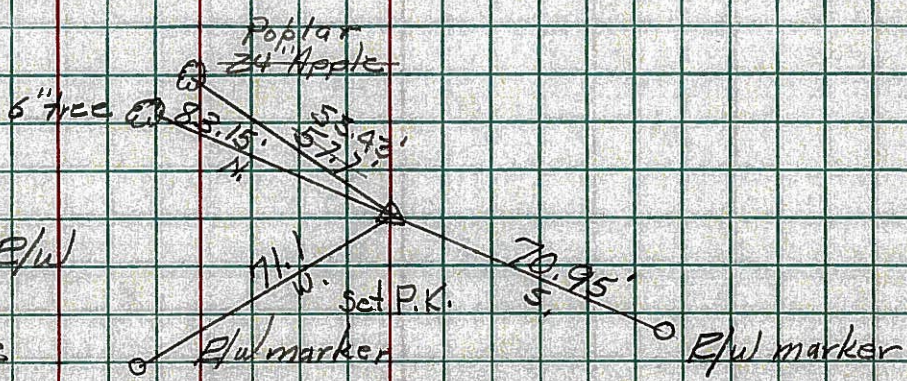
#458



60

Sta. 114+63.15
P.I.
Iron Pin on ϕ E/w
Corp. Limits of
Bettsville

#459



End of Sec. R.

PERSONNEL TITLE PERSONNEL TITLE

COUNTY Seneca DATE

S. R. 12-113 WEATHER

SEC. TEMP

DESCRIPTION LEFT CENTER LINE RIGHT JOB NO.

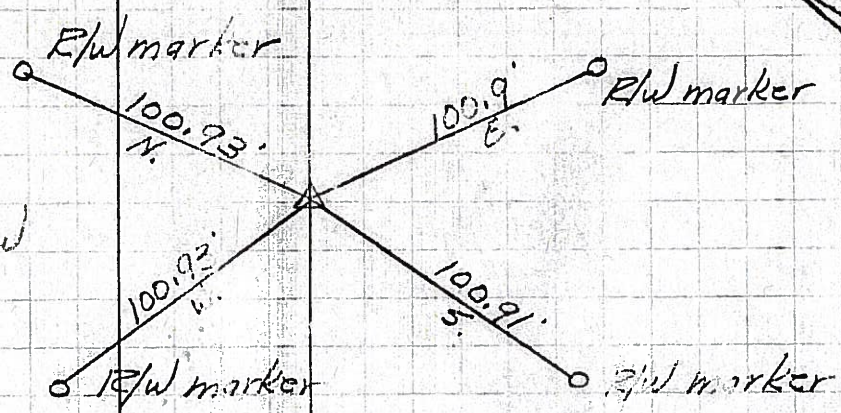
58

Sta. 82+74.7

P.I.

Iron pin on \perp of E/W

#456



Sta. 83+69.61

P.T.

Iron pin on \perp of E/W

#457



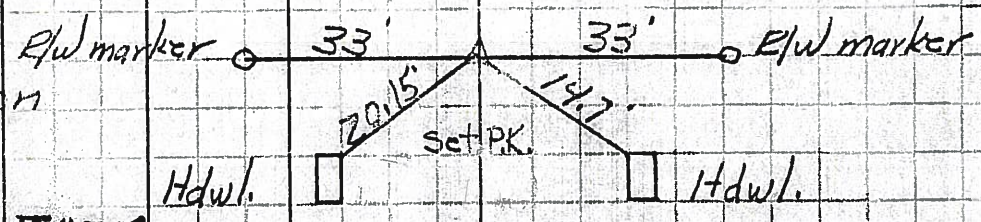
59

Sta. 46+13.4

P.I.

Iron pin on \perp of E/W

#458



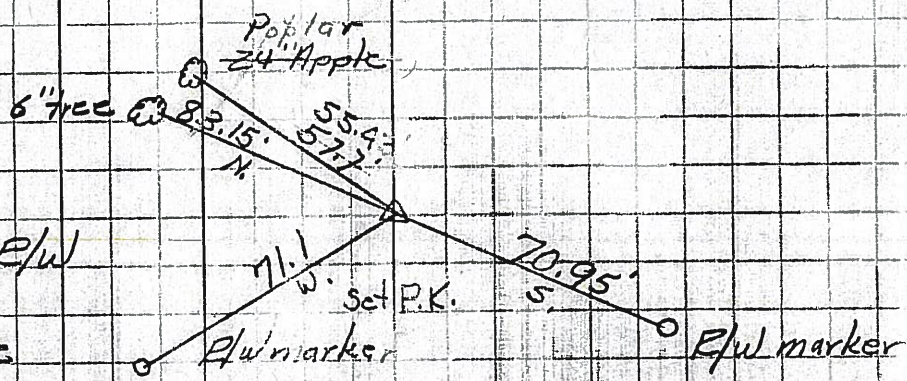
60

Sta. 114+63.15

P.I.

Iron Pin on \perp of E/W
Corp. limits of
Bettsville

#459



End of Sec. R.