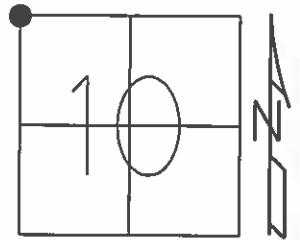


O.D.O.T. DISTRICT 2 SURVEY OFFICE (USE ONLY)

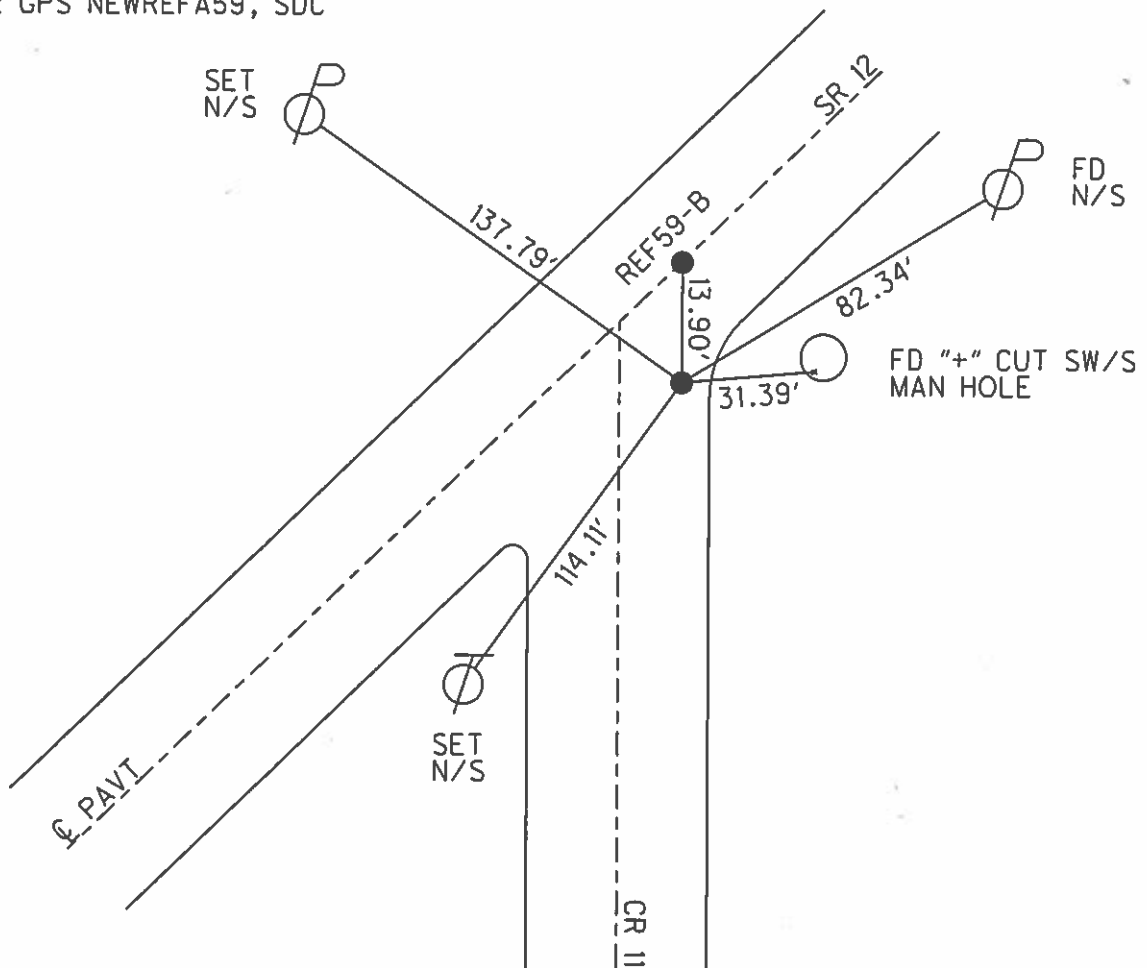
PERSONNEL	REFERENCE NO.	59 A	SHEET	62	OF	70
NOTES	HARBAUGH	DATE	05-31-12	ROUTE	SR 12	
H.C.	CANTERBURY	WEATHER	CLOUDY	COUNTY	SENECA	
R.C.	COUTCHER	TEMP.	60°	TOWNSHIP	LIBERTY	
				SECTION	10	
				T. 3 N	R. 14 E	

TYPE MONUMENT _____ MAG/WASHER _____
 ON SURFACE - BELOW _____ ON _____
 LEFT - Q PAV'T - RIGHT _____ 16.9' _____
0.7' TO RT EDGE PAVEMENT BERM
 S.L.M. _____ 617+13 _____



GRID: NORTHING: 573882.929 EASTING: 1763607.817

- 04-23-03 SET MAG/WASHER, DCH
- 05-31-12 FD MAG/WASHER
- 06-05-12 GPS A59
- 10-24-12 SET MAG/WASHER, SDC
- 10-24-12 GPS NEWREFA59, SDC



O.D.O.T. DISTRICT 2 SURVEY OFFICE

PERSONNEL

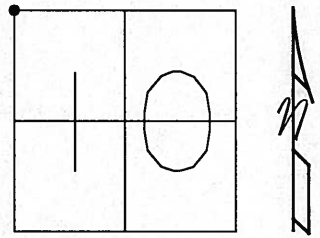
REFERENCE NO. 59-A SHEET 2 OF 9

NOTES _____
 H.C. _____
 R.C. _____

DATE 4-23-03
 WEATHER SUNNY
 TEMP. 45°

ROUTE S.R. 12
 COUNTY SENECA
 TOWNSHIP LIBERTY
 SECTION 10
T 3 N R 14 E

TYPE MONUMENT _____ MAG NAIL _____
 ON SURFACE - ~~BELOW~~ ON SURFACE _____
~~LEFT~~ - Q PAV'T - RIGHT 14.1 RT _____
 _____ TO _____ EDGE PAVEMENT _____
 S.L.M. _____ 617+67 _____



SET MAG NAIL & WASHERS
 4-23-03
 DCH

"B" = MAG NAIL SET BY OTHERS
 ORIGIN, UNKNOWN

DIST. BETWEEN
 A & B 13.92'

