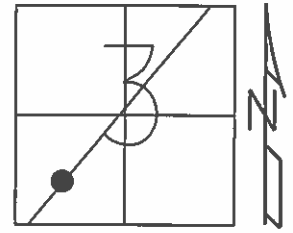


O.D.O.T. DISTRICT 2 SURVEY OFFICE (USE ONLY)

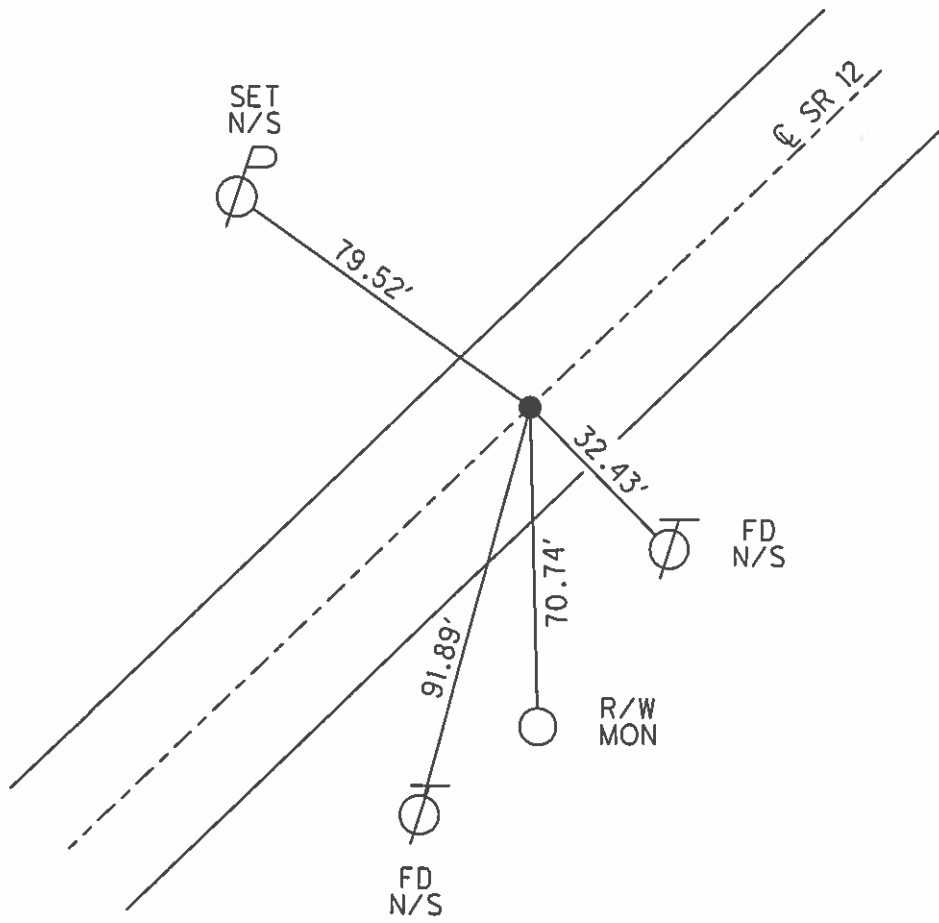
PERSONNEL	REFERENCE NO.	<u>60</u>	SHEET	<u>64</u>	OF	<u>70</u>
NOTES	<u>WESTFALL</u>	DATE	<u>5-6-15</u>	ROUTE	<u>SR 12</u>	
H.C.	<u>WESTFALL</u>	WEATHER	<u>FOGGY</u>	COUNTY	<u>SENECA</u>	
R.C.	<u>LEU</u>	TEMP.	<u>58°F</u>	TOWNSHIP	<u>LIBERTY</u>	
				SECTION	<u>3</u>	
				T	<u>3</u>	R
					<u>N</u>	<u>E</u>

TYPE MONUMENT _____ MAG/WASHER _____
 ON SURFACE - ~~BELOW~~ _____ ON _____
 LEFT - Q PAV'T - RIGHT _____ ON _____
10.5' TO RT EDGE PAVEMENT
 S.L.M. _____ 634+47.58 _____



GRID: NORTHING: 575022.0173 EASTING: 1764922.176

- RECORD:
SET MAG/WASHER
04-23-03, DCH
- FD MAG/WASHER
05-31-12
- GPS, REF60
06-05-12
- SET MAG/WASHER,
10-24-12, SDC
- FD MAG/WASHER
GPS, REF60
2-5-13
- GPS, REF60
5-4-15, DBU
- POINT NOT COVERED
09-27-16, JLL
- GPS, NEWREF60
10-24-12 SDC



O.D.O.T. DISTRICT 2 SURVEY OFFICE

PERSONNEL

REFERENCE NO. 60

SHEET 3 OF 9

NOTES HOMAN

DATE 4-23-03

ROUTE 12

H.C. RYALL

WEATHER SUNNY

COUNTY SENECA

R.C. GLASS

TEMP. 45°

TOWNSHIP LIBERTY

SECTION 3

T 3 N R 14 E

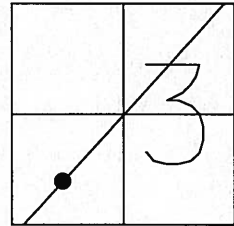
TYPE MONUMENT PK & WAHSER

ON SURFACE - ~~BELOW~~ ON SURFACE

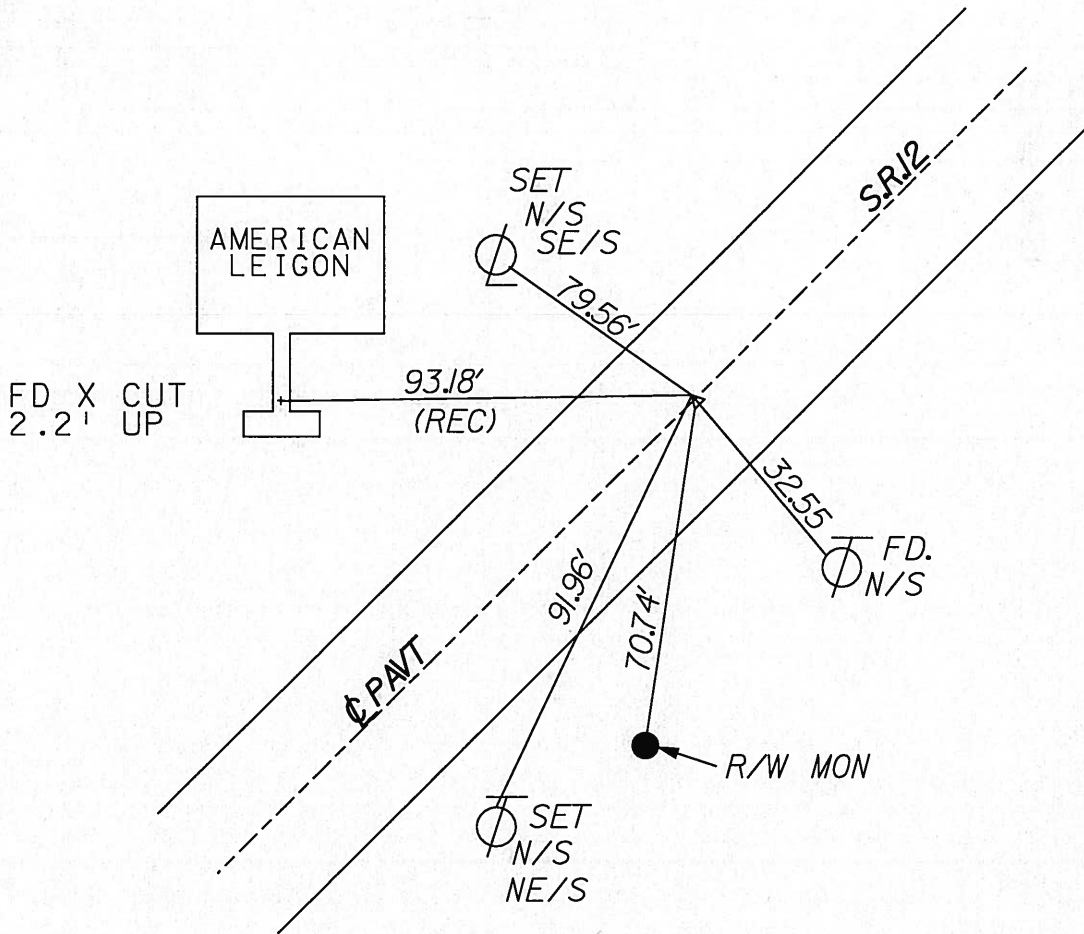
~~LEFT~~ - Q PAV'T - ~~RIGHT~~ YES

10.5 TO RT EDGE PAVEMENT

S.L.M. 635+05.91, Record



SET MAG NAIL & WASHER
4-23-03
DCH



O.D.O.T. DISTRICT 2 SURVEY OFFICE

PERSONNEL

REFERENCE NO. 60

SHEET OF

NOTES Cronin

H.C. Ripple

R.C. Barbour

Geyman

DATE 9/14/87

WEATHER sunny

TEMP. 73°

ROUTE 12

COUNTY Seneca

TOWNSHIP Liberty

SECTION 1 (3)?

T3 N R 14 E

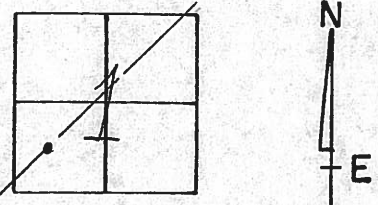
TYPE MONUMENT P.K. & washer

ON SURFACE - BELOW on surface

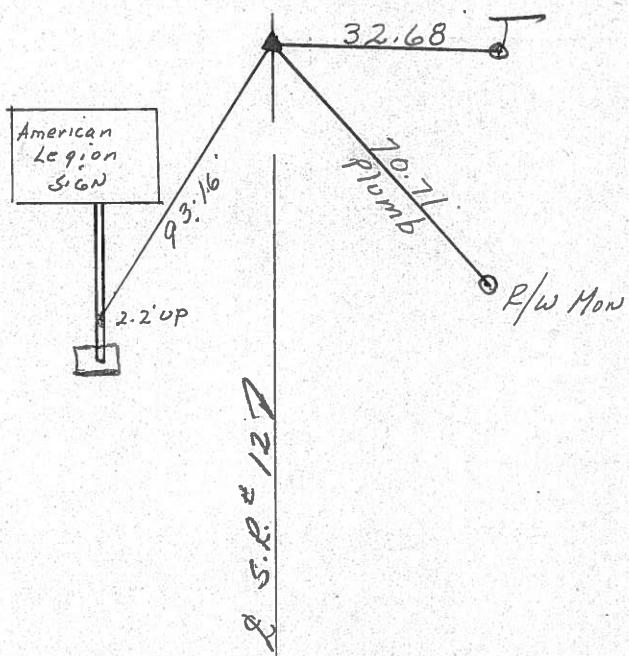
LEFT - ☉ PAV'T. - RIGHT & Pavt.

TO EDGE PAVEMENT

S.L.M. old Sta. 114+63.15



P.K. & washer atop
R.R. spike



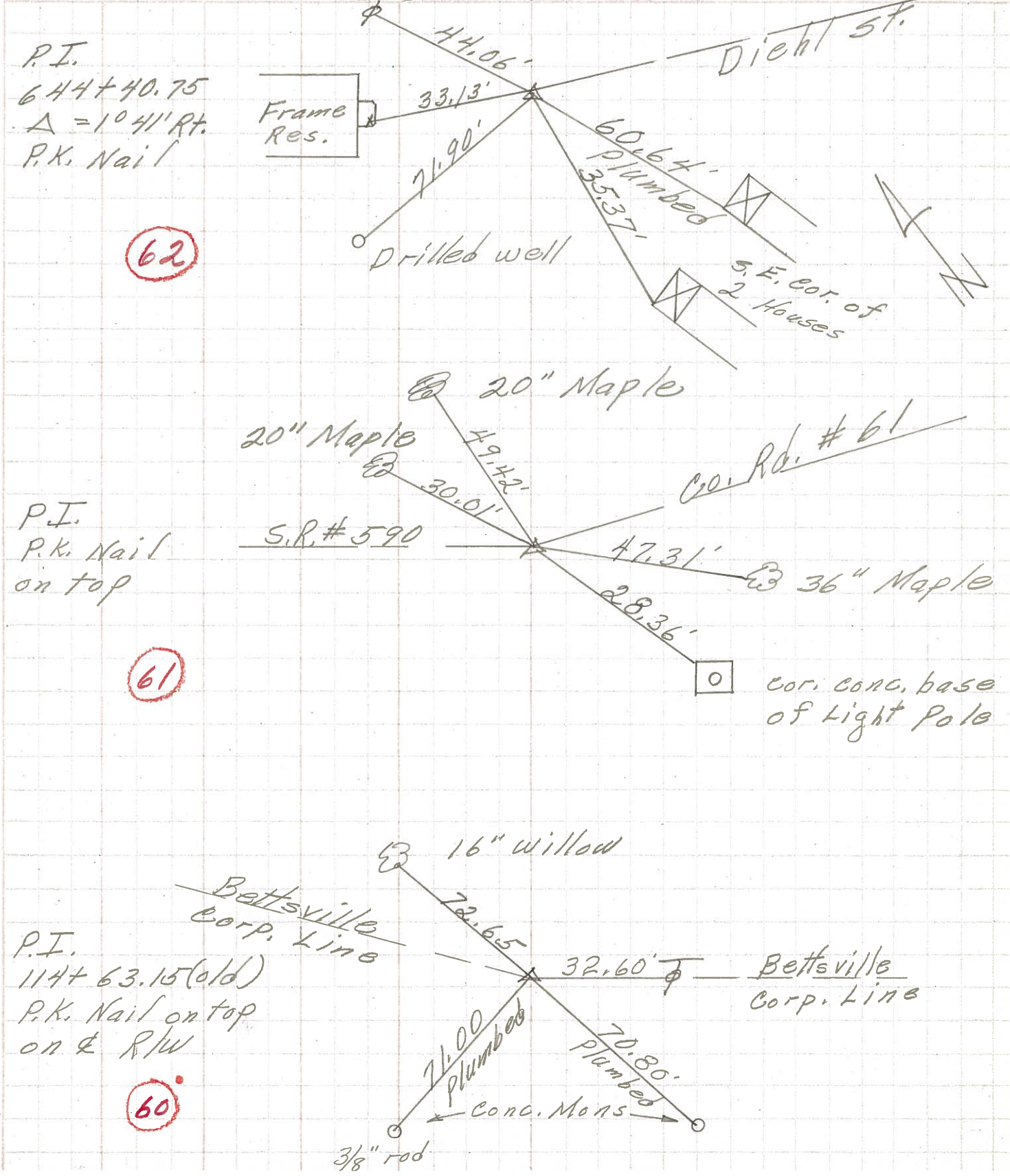
PERSONNEL TITLE PERSONNEL TITLE

COUNTY Seneca DATE 12-14-72

S. R. 12 WEATHER Cloudy

SEC. Bettsville TEMP. 40°

DESCRIPTION Fostoria to sandusky Co. Line JOB NO. _____

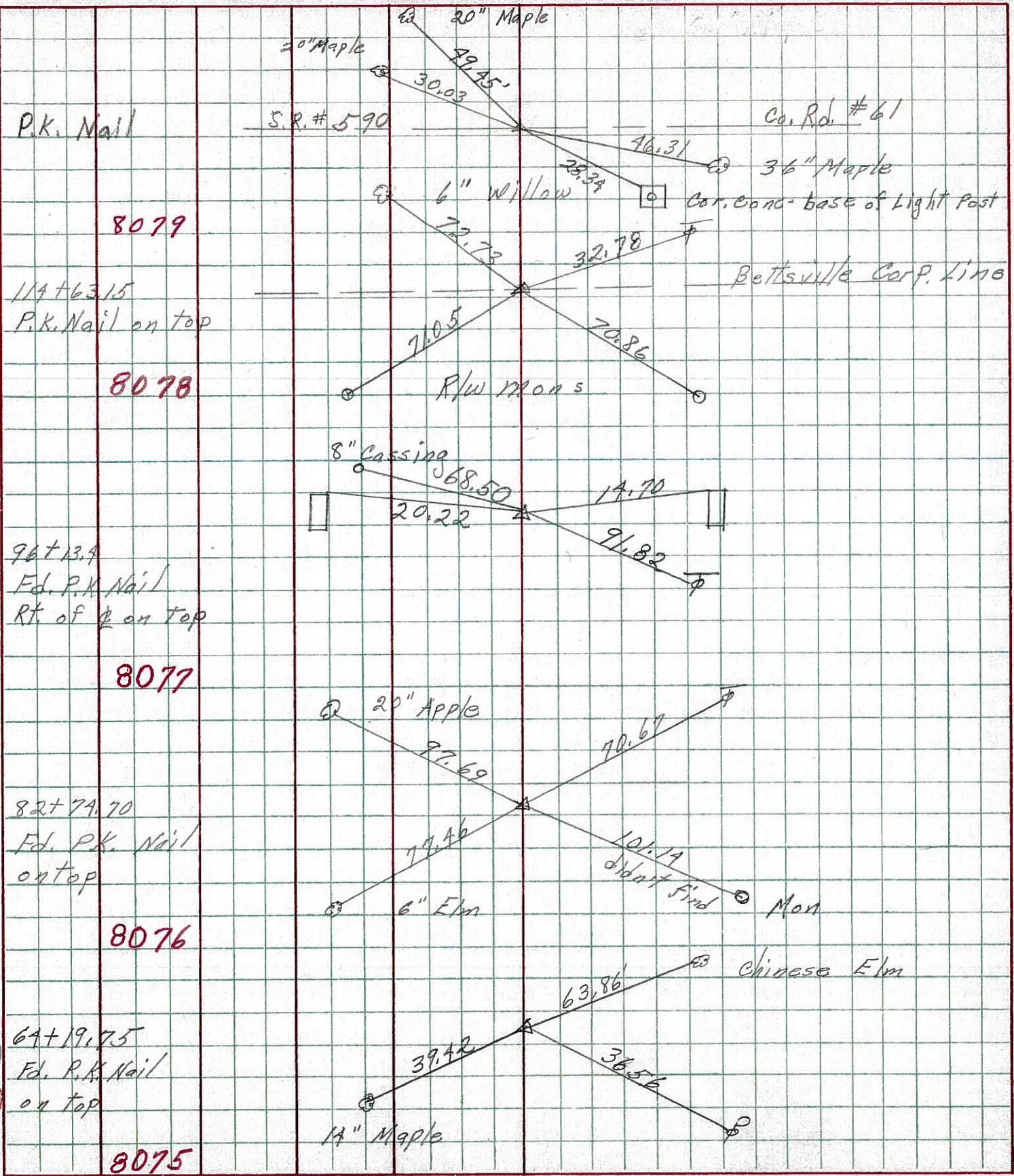


PERSONNEL TITLE PERSONNEL TITLE
 Schneider _____
 Barbour _____
 Redding _____
 Potts _____

COUNTY Seneca DATE 10-19-68
 S. R. 12 WEATHER Fair
 SEC. Fosteria to San. Co. Line TEMP. 65°

DESCRIPTION Ties for Control Points JOB NO. _____

(1)
 (2)
 (3)
 (4)
 (5)
 (6)

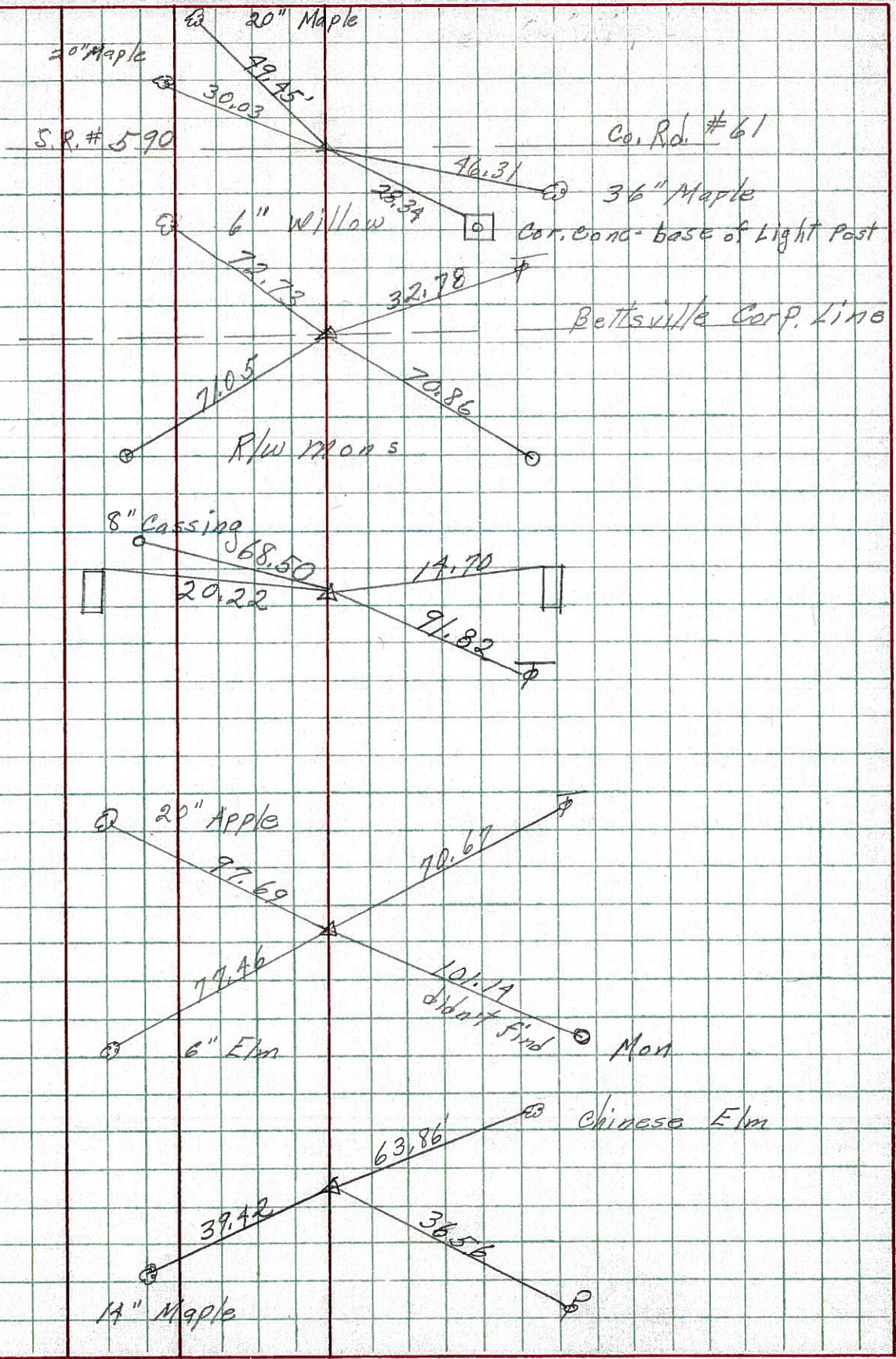


P.K. Nail
 8079
 114+63.15
 P.K. Nail on top
 8078

96+13.4
 Ed. P.K. Nail
 Rt. of ϕ on top
 8077

82+74.70
 Ed. P.K. Nail
 on top
 8076

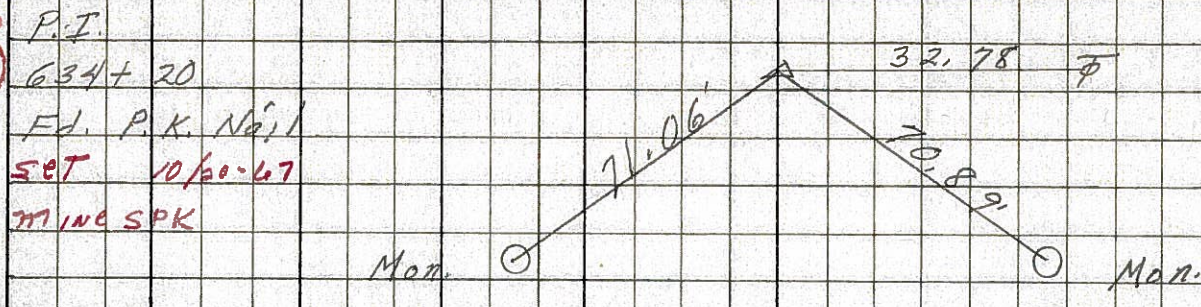
64+19.75
 Ed. P.K. Nail
 on top
 8075



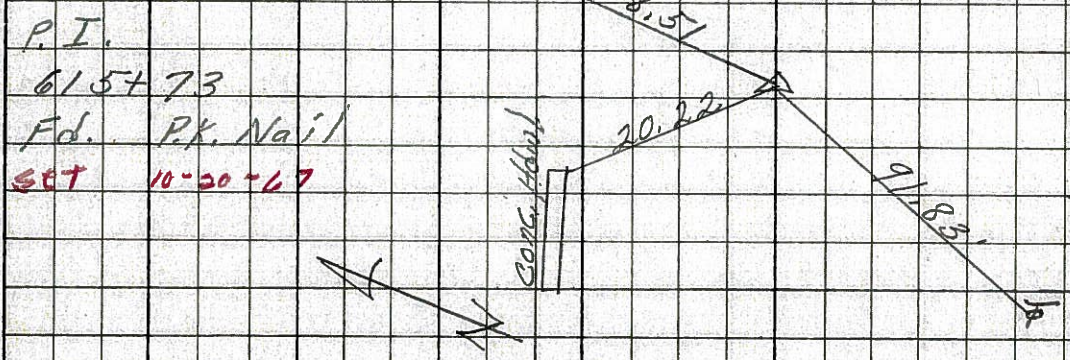
PERSONNEL	TITLE	PERSONNEL	TITLE	COUNTY	DATE
Schneider		Potts		Seneca	6-16-67
Mosser				S. R. 12	WEATHER Hot
Barbour				SEC. 9.41-10.04	TEMP. 95°
Redding					

DESCRIPTION Ties for Control Points JOB NO. _____

60



59



58



PERSONNEL TITLE PERSONNEL TITLE

COUNTY Seneca

DATE

S. R. 12-113

WEATHER

SEC.

TEMP.

DESCRIPTION

LEFT

CENTER LINE

RIGHT

JOB NO.

58

Sta. 82+74.7

P.I.

Iron pin on ϕ E/w

#456

82+62.1 $\Delta = 9^{\circ}35' L.$

E/w marker

100.93' N.

100.9' E.

E/w marker

100.93' W.

E/w marker

100.91' S.

E/w marker

Sta. 83+69.61

P.T.

Iron pin on ϕ of E/w

#457

E/w marker

33'

33'

E/w marker

83+32.6 $\Delta = 0^{\circ}46' L.$

59

Sta. 96+13.4

P.I.

Iron pin on ϕ of E/w

#458

E/w marker

33'

33'

E/w marker

C. Rd S.

20.15' set P.K.

14.7'

Hdw.

Hdw.

60

Sta 14+63.15

P.I.

Iron Pin on ϕ E/w
Corp. Limits of
Bettsville

#459

6" tree ϕ 83.15' N.
Poplar 24" Apple
57.7' S.
57.7' W.

E/w marker

71.1' W. set P.K.

70.95' S.

E/w marker

End of Sec. E.

PERSONNEL TITLE PERSONNEL TITLE

COUNTY Seneca DATE

S. R. 12-113 WEATHER

SEC. TEMP.

DESCRIPTION LEFT CENTER LINE RIGHT JOB NO.

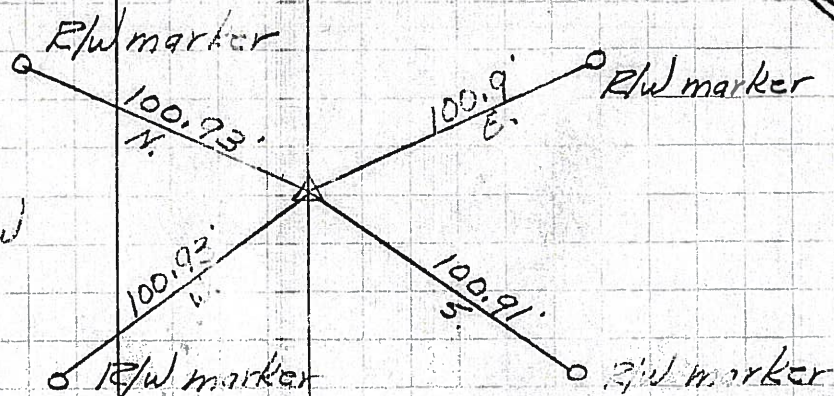
58

Sta. 82+74.7

P.I.

Iron pin on \perp of E/W

#456



Sta. 83+69.61

P.T.

Iron pin on \perp of E/W

#457



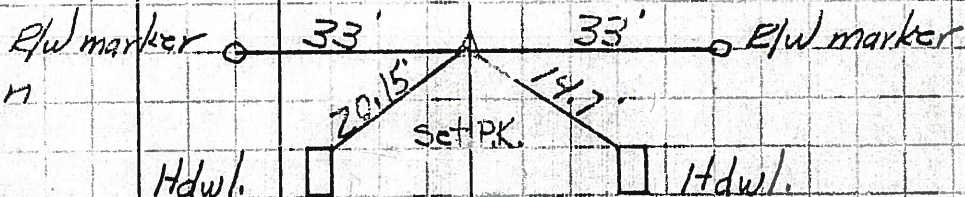
59

Sta. 96+13.4

P.I.

Iron pin on \perp of E/W

#458



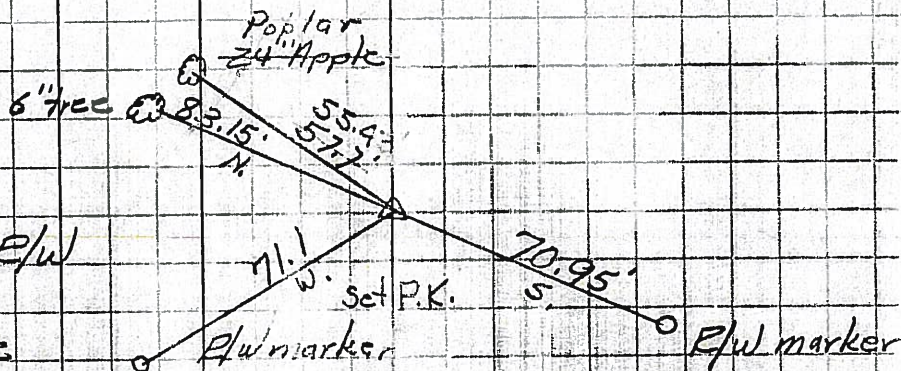
60

Sta. 114+63.15

P.I.

Iron Pin on \perp of E/W
Corp. limits of
Bettsville

#459



End of Sec. R.