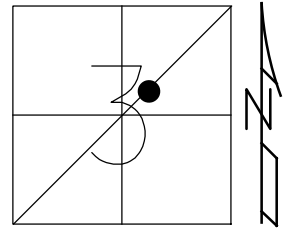


O.D.O.T. DISTRICT 2 SURVEY OFFICE (USE ONLY)

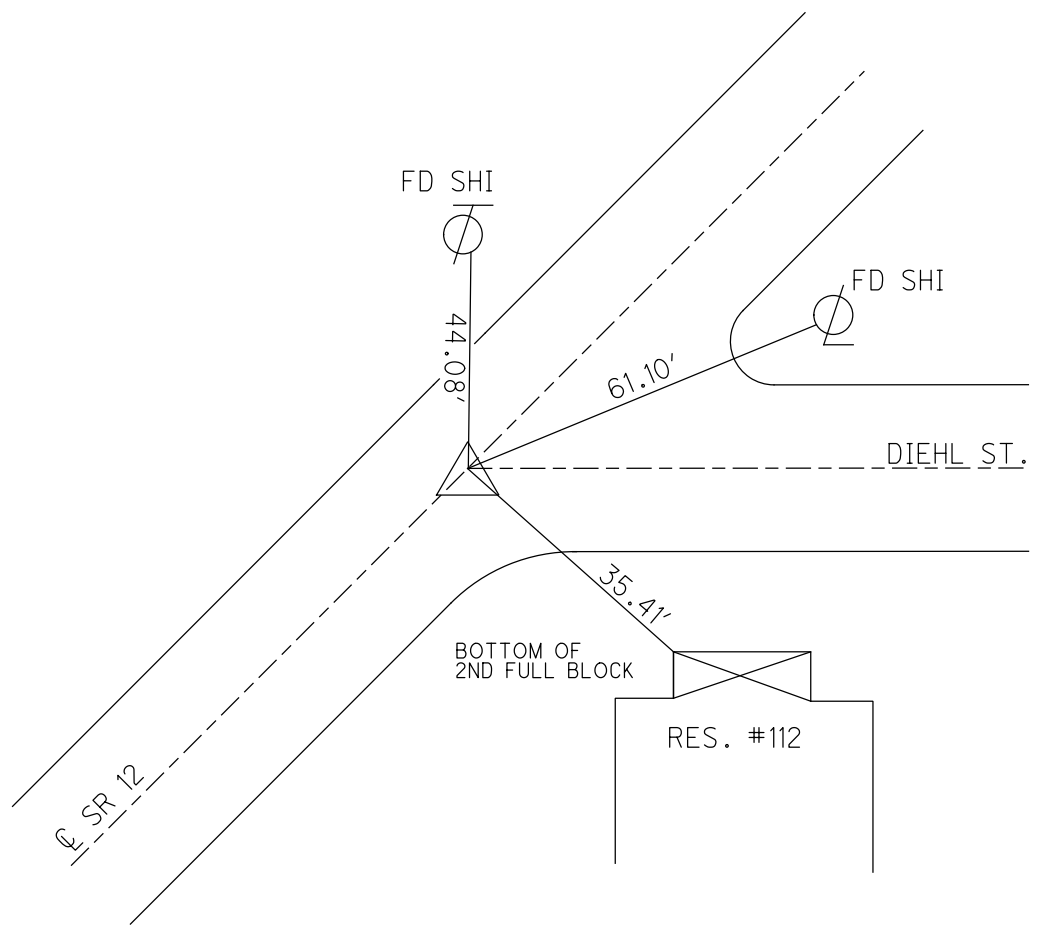
PERSONNEL _____ REFERENCE NO. 62 SHEET 66 OF 70
 NOTES ZEBROWSKI DATE 6-20-02 ROUTE SR 12
 H.C. HOMAN WEATHER CLOUDY COUNTY SENECA
 R.C. BEAUMONT TEMP. 80°F TOWNSHIP LIBERTY
 _____ SECTION 3
 _____ T 3 N R 14 E

TYPE MONUMENT PK/WASHER
 ON SURFACE - ~~BELOW~~ ON
 LEFT - Q PAV'T - ~~RIGHT~~ 1'
 _____ TO _____ EDGE PAVEMENT
 S.L.M. 663+82.09



GRID: NORTHING: 576930.6164 EASTING: 1767151.277

RECORD:
 P.I. $\Delta=01^{\circ}41'RT$
 SET MAG/WASHER,
 07-17-03, DCH
 FD MAG NAIL
 GPS, REF62
 2/5/13
 SET MAG/WASHER
 GPS, NEWREF62
 9-27-16, JLL

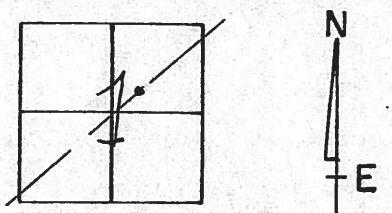


O.D.O.T. DISTRICT 2 SURVEY OFFICE

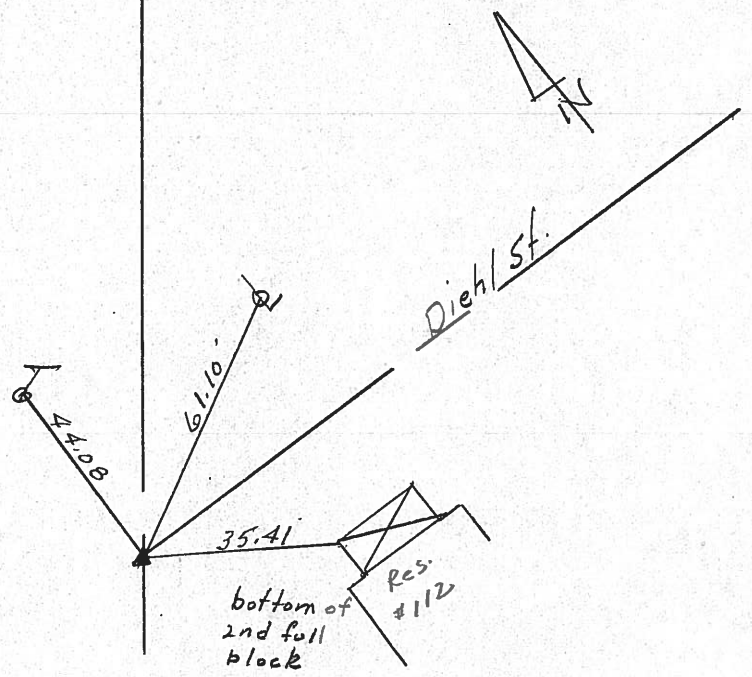
PERSONNEL _____ REFERENCE NO. 62 SHEET _____ OF _____

NOTES Cronin
 H.C. Ripple DATE 9/18/87 ROUTE 12
 R.C. Geyman WEATHER sunny COUNTY Seneca
 _____ TEMP. 65° TOWNSHIP Liberty
 _____ SECTION 1 (3)?
 _____ T3 N R 14 E

TYPE MONUMENT P.K. & washer
 ON SURFACE - BELOW on surface
 LEFT - ☉ PAV'T. - RIGHT 1± Lt & Aut
 _____ TO _____ EDGE PAVEMENT
 S.L.M. 644+40.75



P.I Δ=01°41 Rt.
P.K. & washer at top
same at top P.K.



S.P. #127

PERSONNEL TITLE PERSONNEL TITLE

COUNTY Seneca DATE 12-14-72

S. R. 12 WEATHER Cloudy

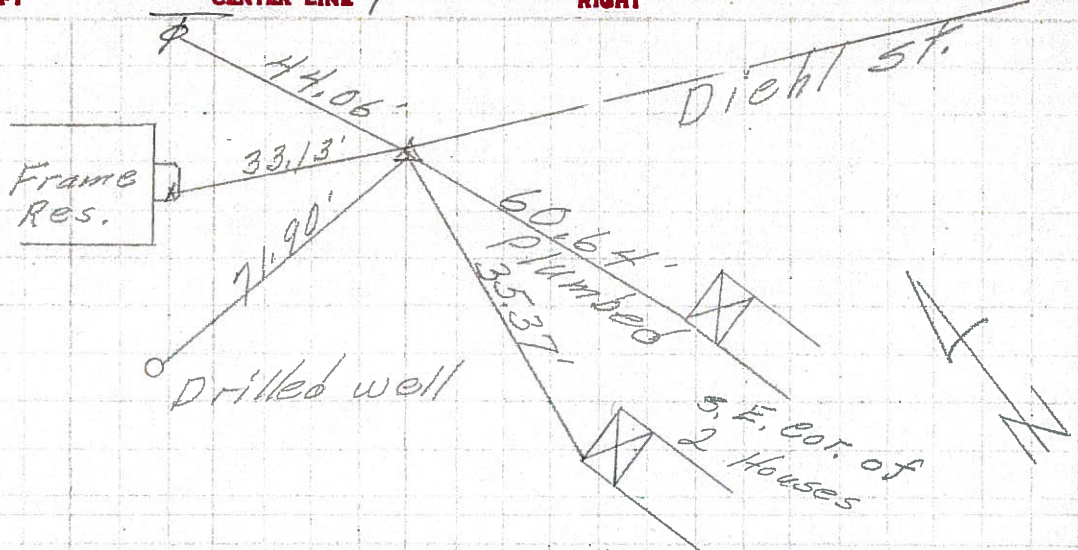
SEC. Bettsville TEMP. 40°

DESCRIPTION Fostoria to Sandusky Co. Line JOB NO.

LEFT CENTER LINE RIGHT

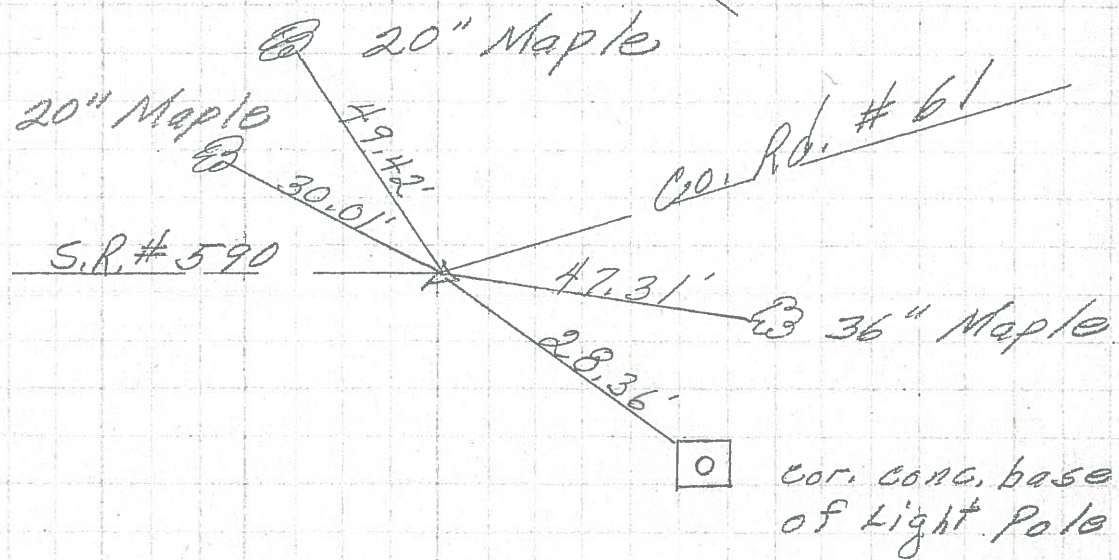
P.I.
644 + 40.75
Δ = 1° 41' Rt.
P.K. Nail

62



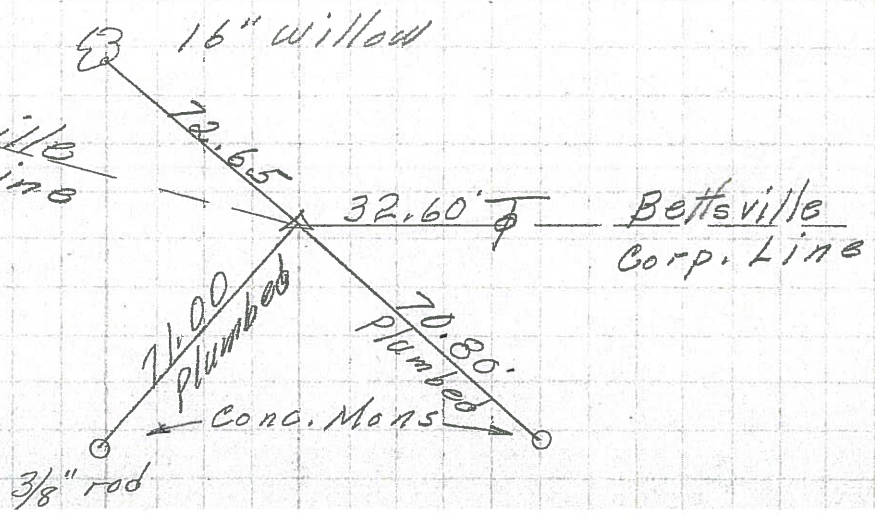
P.I.
P.K. Nail
on top

61



P.I.
114 + 63.15 (old)
P.K. Nail on top
on & R/W

60



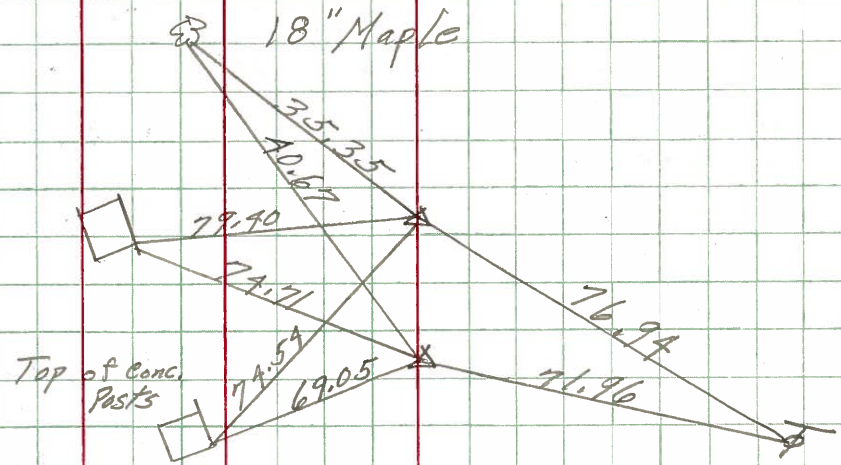
PERSONNEL	TITLE	PERSONNEL	TITLE	COUNTY	DATE
Schneider				Seneca	10-14-68
Barbour				S. R.	12
Redding				WEATHER	Fair
Potts				SEC. Battsville	TEMP. 80°

DESCRIPTION Ties for Control Points JOB NO. _____

LEFT CENTER LINE RIGHT

(67)

P.I. of survey
678+03.50
 $\Delta = 2^{\circ}32' RT.$
P.I. Const.
677+96.48

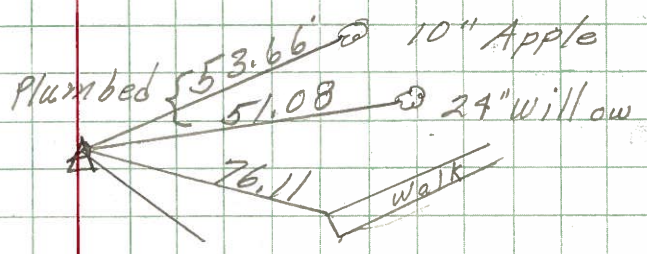


8082

All Plumbed

(64)

P.I.
670+05.02
P.K. Nail
 $\Delta = 4^{\circ}57' Lt.$

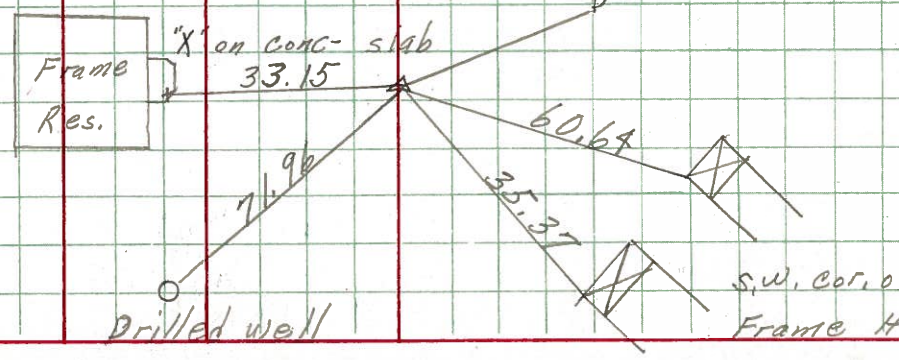


8081

Sullivan St

(62)

664+40.75
 $\Delta = 1^{\circ}41' RT.$
P.K. Nail atop



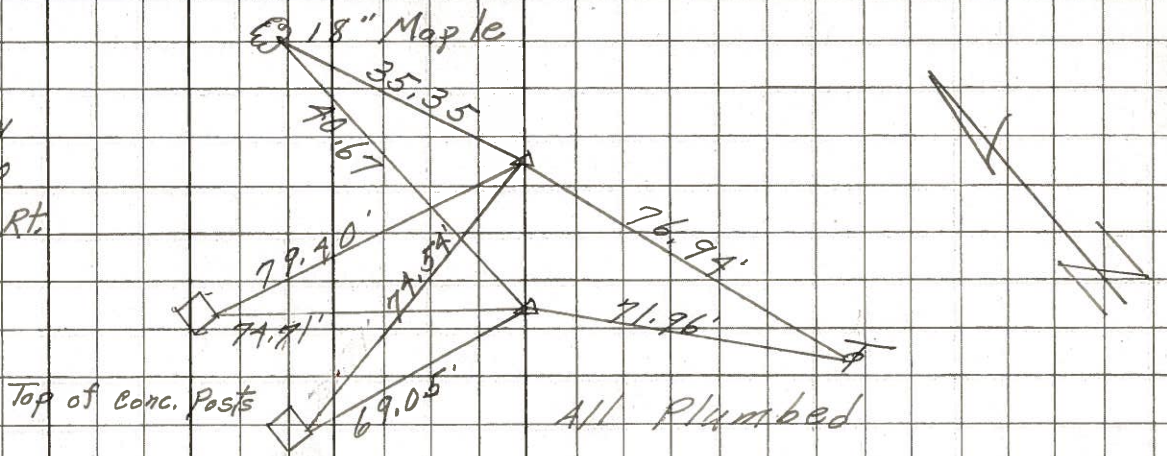
8080

PERSONNEL	TITLE	PERSONNEL	TITLE	COUNTY	DATE	WEATHER	TEMP.
Schneider				Seneca	4-15-68	Fair	45°
Barbour				S. R. 12			
Redding				SEC. 12.64			

DESCRIPTION Ties for Control Points JOB NO. _____

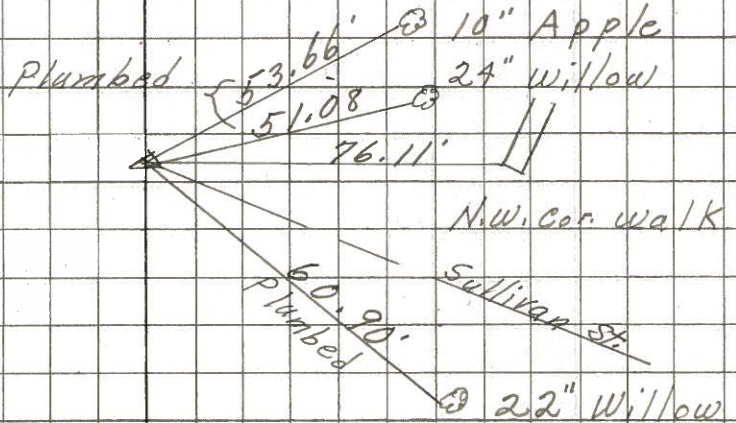
(67)

P.I. Survey
 678+03.50
 $\Delta = 2^{\circ} 32' \text{ Rt.}$
 P.I. Const.
 677+96.48



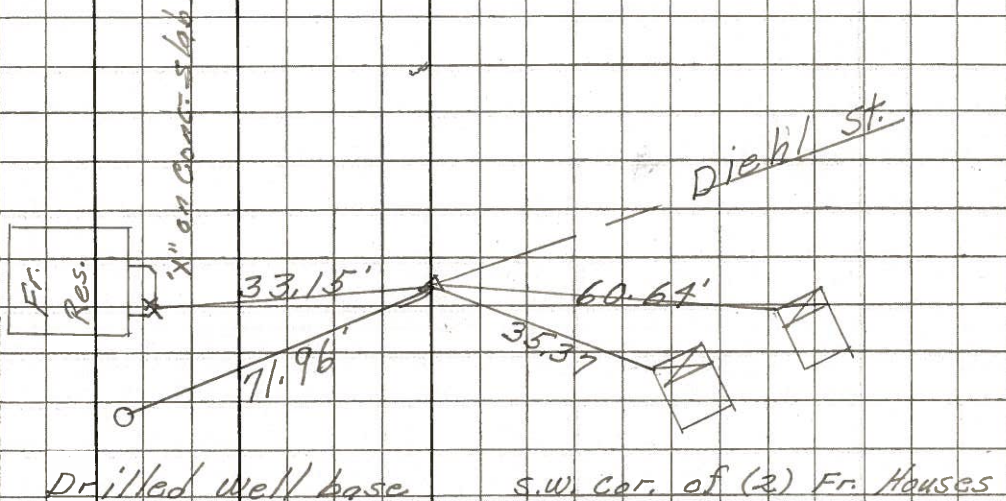
(64)

P.I.
 670+05.02
 P.K. Nail
 $\Delta = 4^{\circ} 57' \text{ Lt.}$



(62)

P.I.
 667+40.75
 $\Delta = 10^{\circ} 41' \text{ Rt.}$
 P.K. Nail



PERSONNEL TITLE PERSONNEL TITLE

COUNTY Seneca DATE 1-2-63

Schneider

Masser

Zahn

Schwartz

S. R. # 12

WEATHER cold

SEC. Bett'sville Br # 12.74 TEMP. 12°

DESCRIPTION Ties for Control Points

JOB NO.

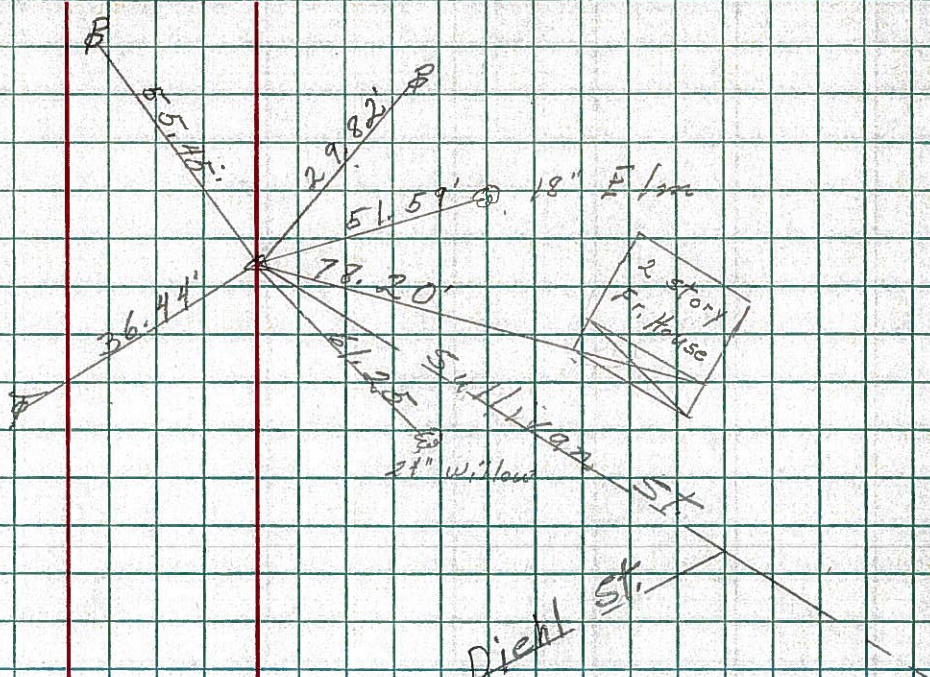
LEFT

CENTER LINE

RIGHT

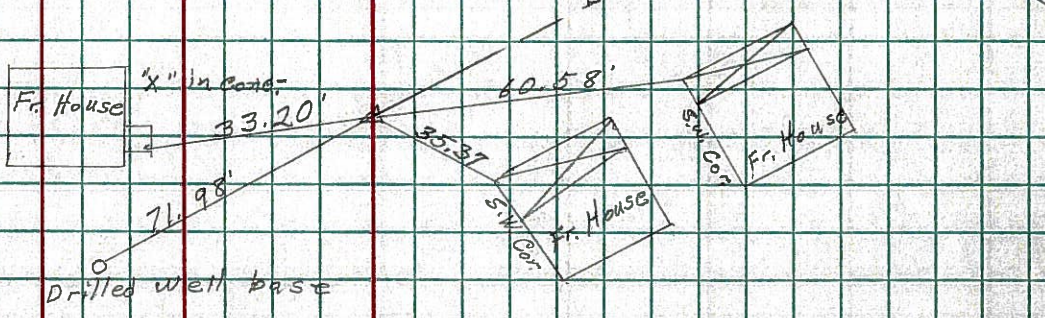
(64)

P.I.
670+05.02
P.K. Nail



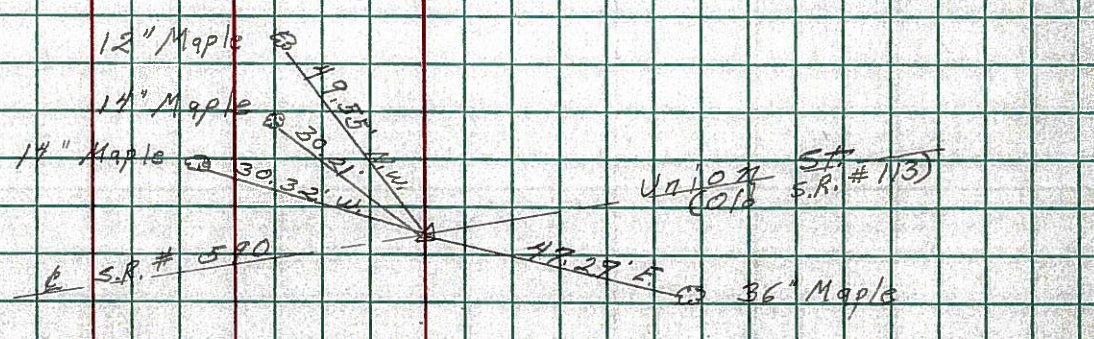
(62)

P.I.
664+40.75
P.K. Nail



(61)

P.I.
658+24.41
P.K. Nail

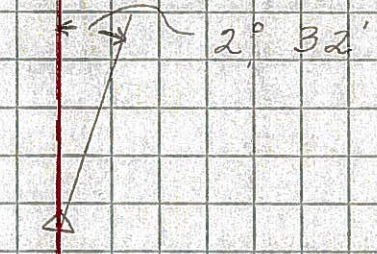


PERSONNEL TITLE PERSONNEL TITLE COUNTY Seneca DATE 12-28-62
Schneider _____ Mosser _____
Zaher _____ S. R. # 12 WEATHER Fair
Schwartz _____ Bridge # 12.74
 SEC. Bethsville North TEMP 30°

DESCRIPTION Deltas LEFT CENTER LINE RIGHT JOB NO.

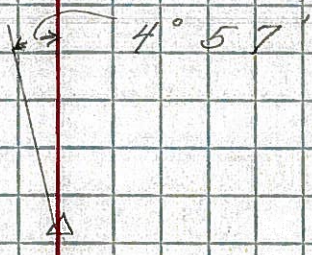
(67)

P.I.
 678+03.50
 $\Delta = 2^{\circ} 32' \text{ Rt.}$
 set P.K. Nail
 90' from sta.
 678+73.50



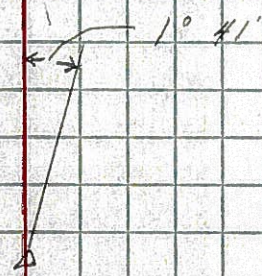
(64)

P.I.
 670+05.02
 $\Delta = 4^{\circ} 57' \text{ Lt.}$
 set P.K. Nail
 Had one good tie



(62)

P.I.
 661+40.75
 $\Delta = 1^{\circ} 41' \text{ Rt.}$
 Found Iron Pipe
 set P.K. Nail
 on surface



(61)

P.I.
 658+24.41
 $\Delta = 0^{\circ} 40' \text{ Lt.}$
 Found P.K. Nail

