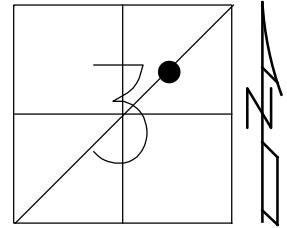


O.D.O.T. DISTRICT 2 SURVEY OFFICE (USE ONLY)

PERSONNEL _____ REFERENCE NO. 64 SHEET 67 OF 70
 NOTES LEU DATE 5-4-15 ROUTE SR 12
 H.C. O'DONNELL WEATHER SUNNY COUNTY SENECA
 R.C. LEU TEMP. 85°F TOWNSHIP LIBERTY
 _____ SECTION 3
 _____ T 3 N R 14 E

TYPE MONUMENT PK/WASHER
 ON SURFACE - ~~BELOW~~ ON
~~LEFT~~ - Q PAV'T - RIGHT 4'
 - TO - EDGE PAVEMENT
 S.L.M. 669+46.32
 GRID: NORTHING: 577289.7754 EASTING: 1767586.258



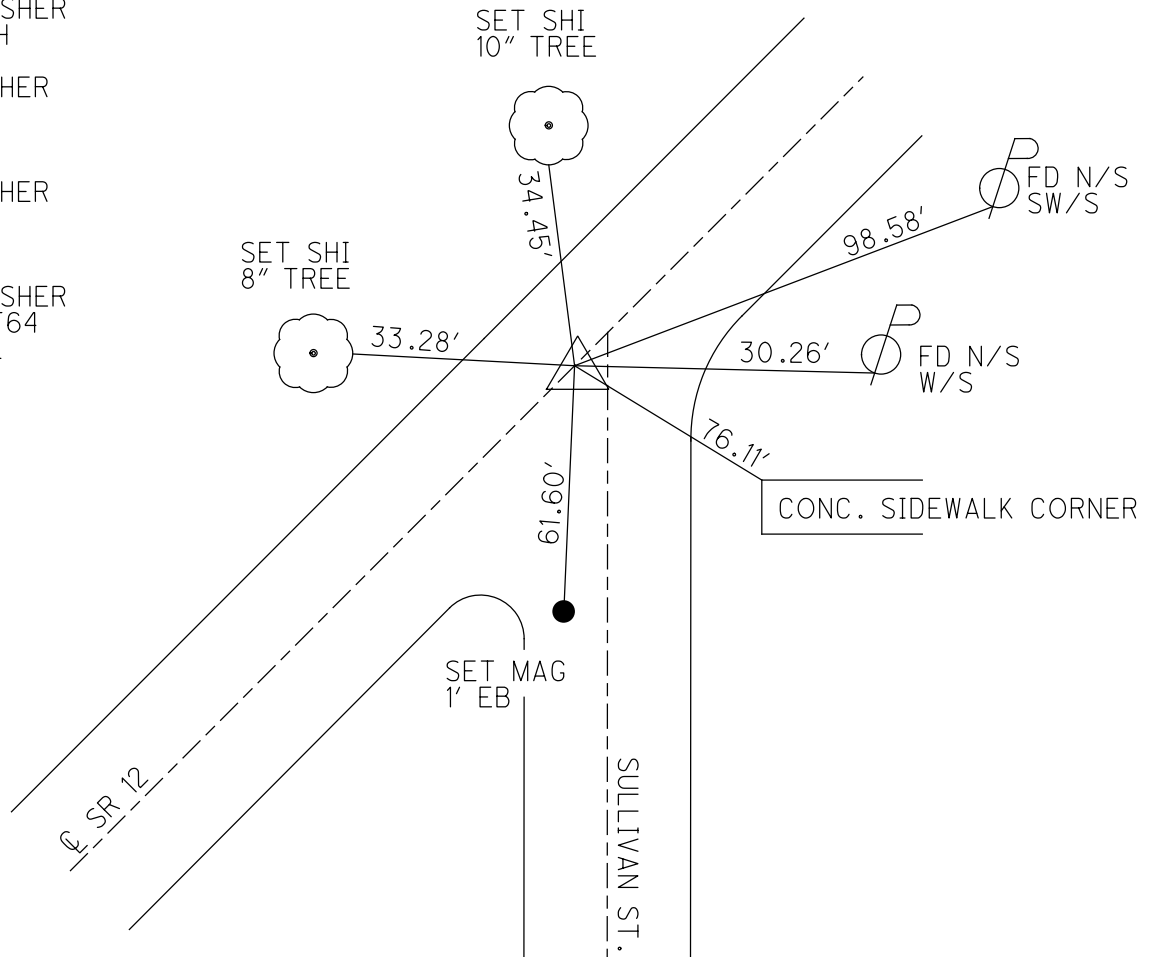
RECORD:
 P.I. $\Delta=04^{\circ}57'$ LT
 PK/WASHER
 ATOP PK/WASHER
 ATOP RR. SPIKE

SET MAG/WASHER
 7-16-03, DCH

FD MAG/WASHER
 GPS, REF64
 2-5-13

FD MAG/WASHER
 GPS, REF64
 5-4-15

SET MAG/WASHER
 GPS, NEWREF64
 9-27-16, JLL



O.D.O.T. DISTRICT 2 SURVEY OFFICE

PERSONNEL

REFERENCE NO. 64

SHEET OF

NOTES Cronin

H.C. Ripple

R.C. Geyman

DATE 9/18/87

WEATHER cloudy

TEMP. 65°

ROUTE 12

COUNTY Seneca

TOWNSHIP Liberty

SECTION 1 (3)?

T3 N R14 E

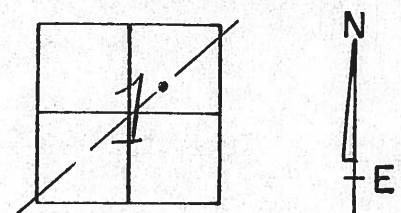
TYPE MONUMENT P.K. & washer

ON SURFACE - BELOW on surface

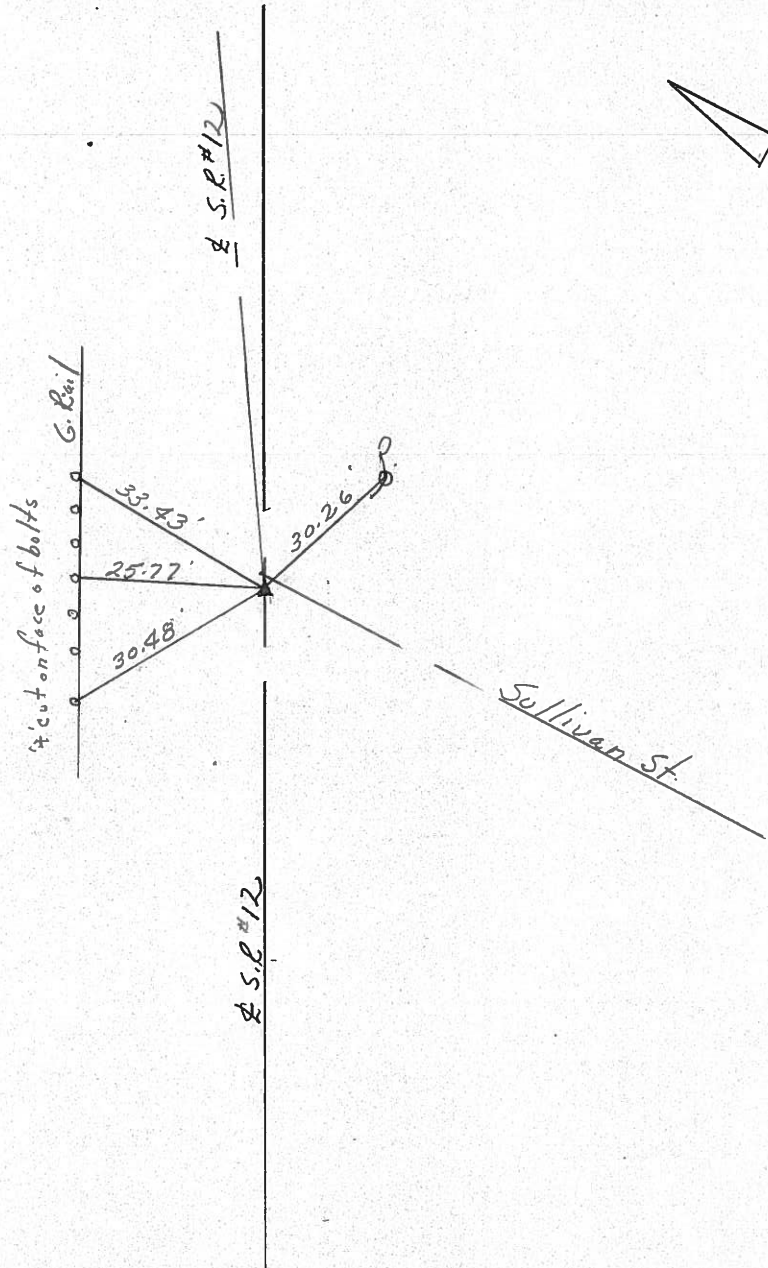
LEFT - ☉ PAV'T. - RIGHT 4' Rt & Pavt.

TO EDGE PAVEMENT

S.L.M. 670+05.02



P.I. 1 = 04° 57' Lt.
P.K. & washer at top same
at top R.R. spike



PERSONNEL TITLE PERSONNEL TITLE

COUNTY Seneca DATE 12-14-72

S. R. 12 WEATHER cloudy

SEC. Bettsville TEMP. 40°

DESCRIPTION Fostoria to Sandusky Co. Line LEFT CENTER LINE RIGHT JOB NO.

P.T.
P.K. Nail
1 1/2' RT. of Φ

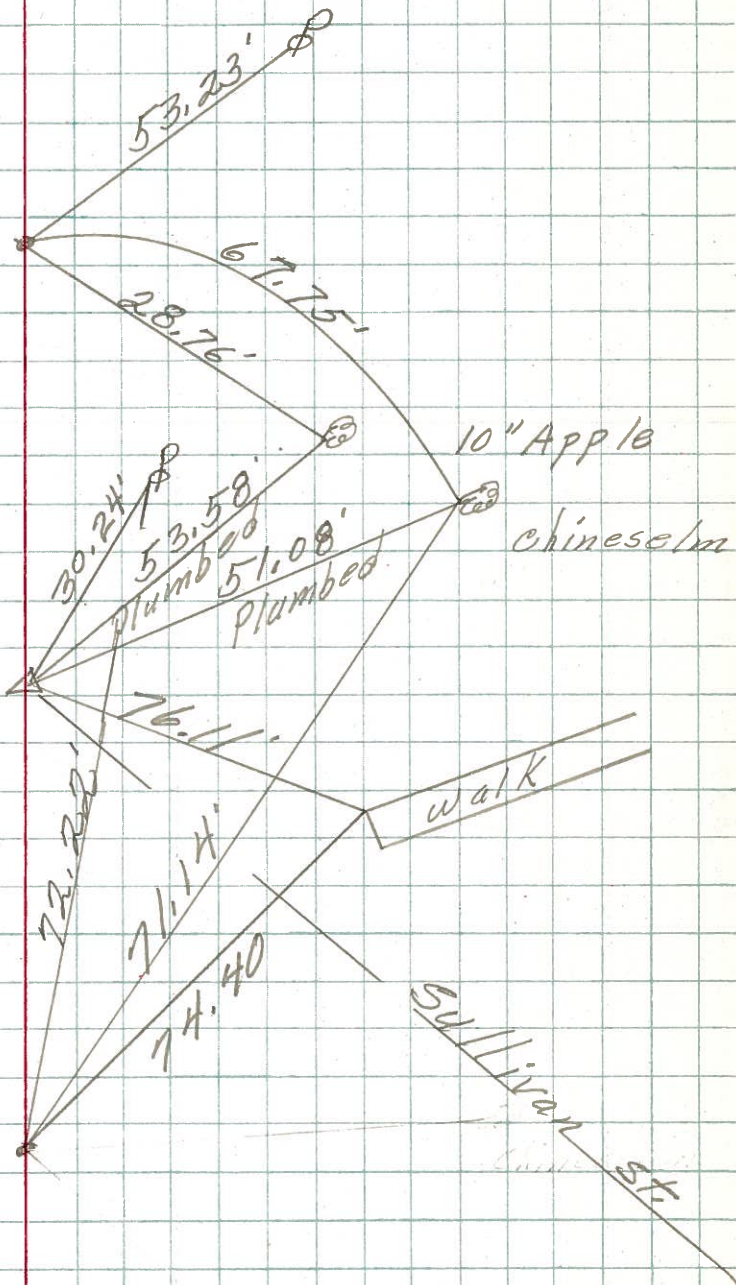
65

P.I.
670+05.02
R.R. spk.
3' RT. of Φ
 $\Delta = 40^\circ 57' 14''$

64

P.C.
P.K. Nail

63



PERSONNEL	TITLE	PERSONNEL	TITLE
Schneider			
Barbour			
Redding			
Potts			

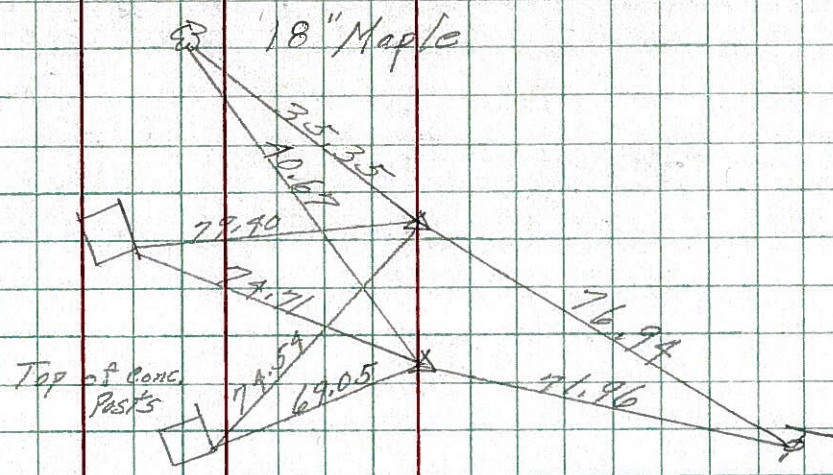
COUNTY Seneca DATE 10-14-68
 S. R. 12 WEATHER Fair
 SEC. Bottsville TEMP. 80°

DESCRIPTION Ties for Control Points JOB NO. _____

LEFT CENTER LINE RIGHT

67

P.T. of survey
 678+03.50
 $\Delta = 2^{\circ}32' RT.$
 P.I. Const.
 677+96.48

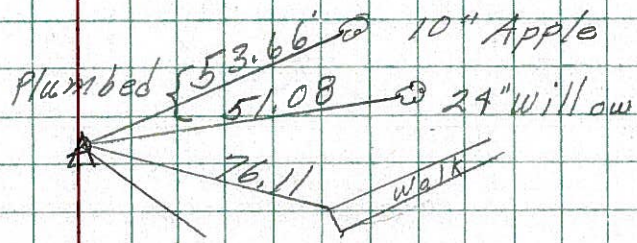


8082

All Plumbed

64

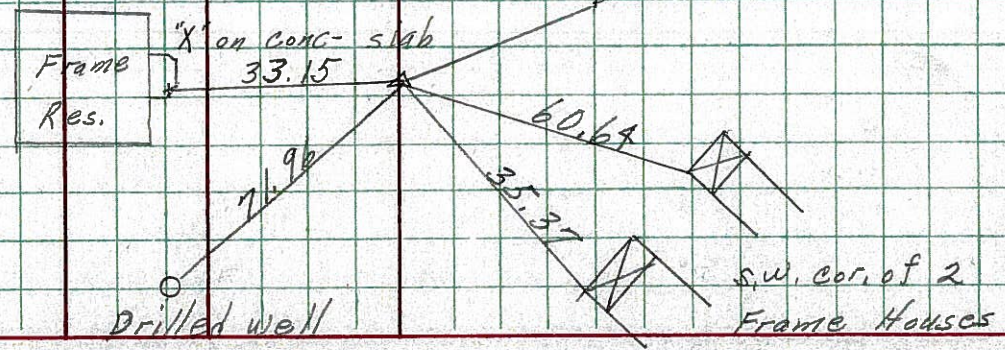
P.I.
 670+05.02
 P.K. Nail
 $\Delta = 4^{\circ}57' Lt.$



8081

62

664+40.75
 $\Delta = 1^{\circ}41' RT.$
 P.K. Nail on top



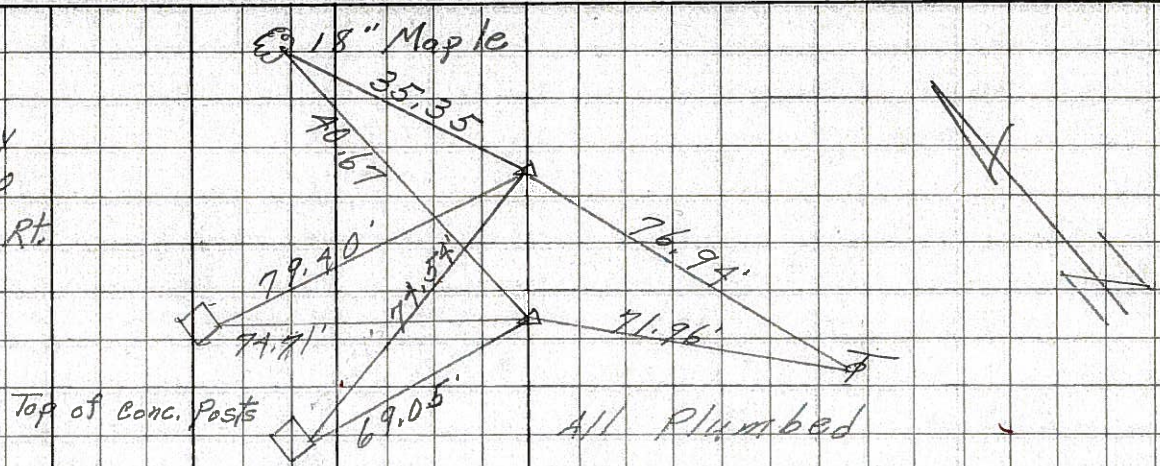
8080

PERSONNEL	TITLE	PERSONNEL	TITLE	COUNTY	Seneca	DATE	4-15-68
Schneider				S. R.	12	WEATHER	Fair
Barbour				SEC.	12.64	TEMP.	45°
Redding							

DESCRIPTION Ties for Control Points JOB NO. _____

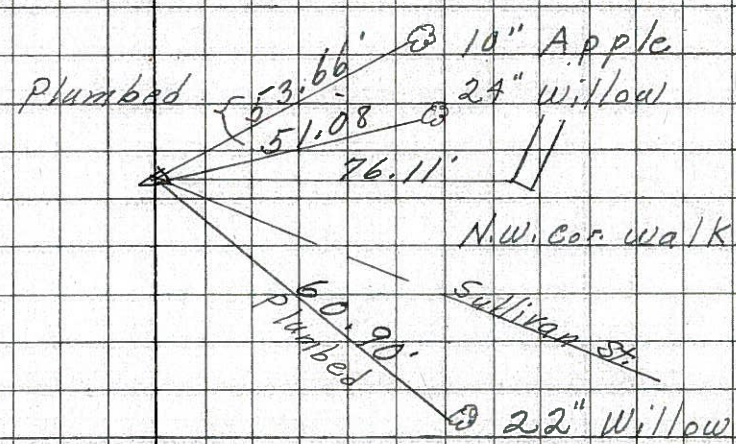
67

P.I. Survey
678+03.50
 $\Delta = 2^\circ 32' \text{ Rt.}$
P.I. Const.
677+96.48



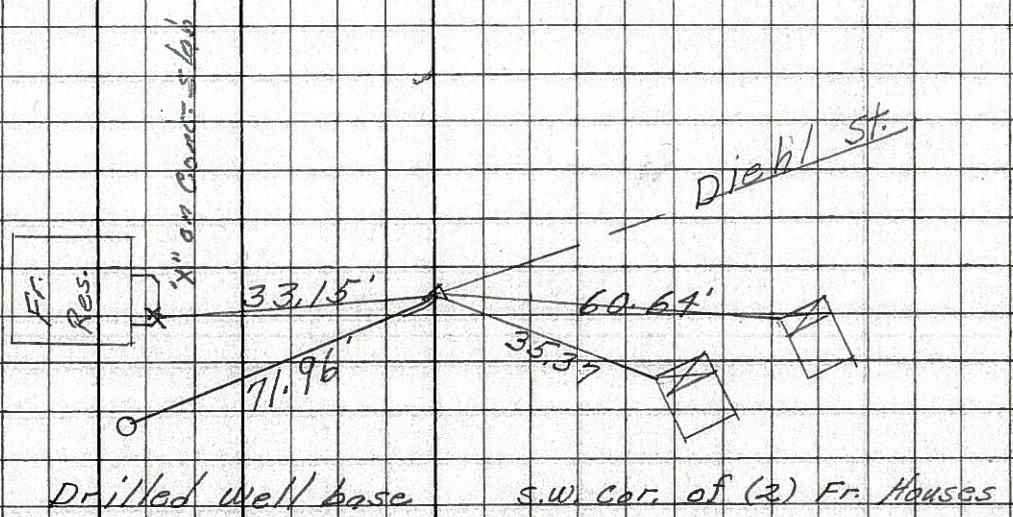
64

P.I.
670+05.02
P.K. Nail
 $\Delta = 4^\circ 57' \text{ Lt.}$



62

P.I.
664+40.75
 $\Delta = 1941' \text{ Rt.}$
P.K. Nail



PERSONNEL TITLE PERSONNEL TITLE

COUNTY Seneca DATE 1-2-63

Schneider

Messer

Zahn

Schwartz

S. R. # 12

WEATHER Cold

SEC. Beth'sville Br # 12.74 TEMP. 12°

DESCRIPTION Ties for Control Points

JOB NO.

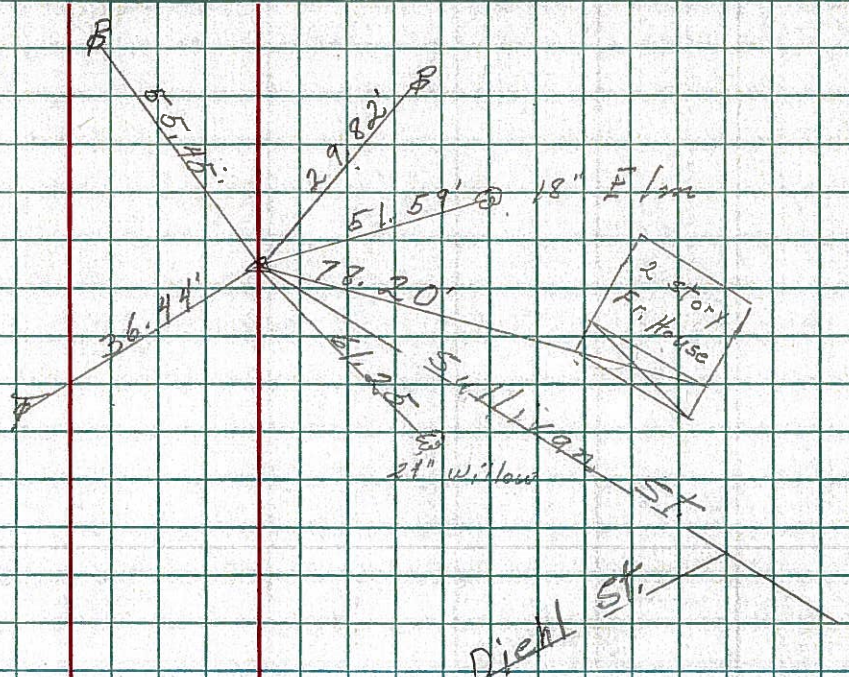
LEFT

CENTER LINE

RIGHT

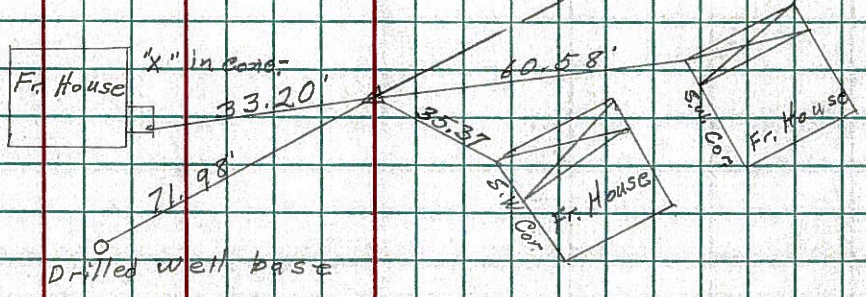
64

P. I.
670+05.02
P.K. Nail



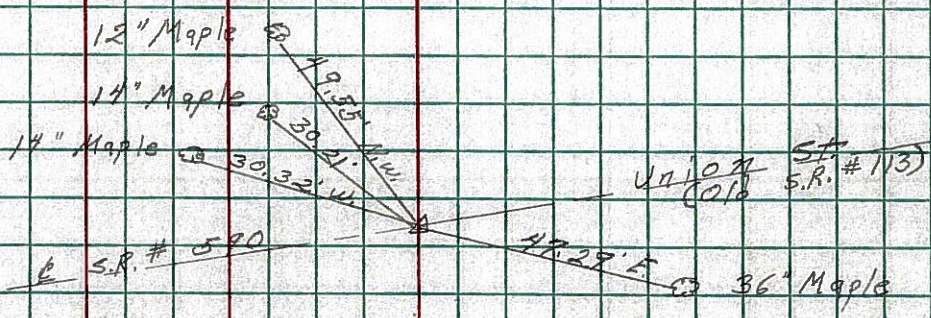
62

P. I.
664+40.75
P.K. Nail



61

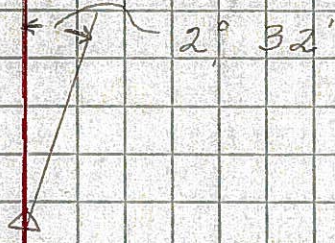
P. I.
658+24.41
P.K. Nail



PERSONNEL	TITLE	PERSONNEL	TITLE	COUNTY	DATE
Schneider				Seneca	12-28-62
Mosser				S. R. # 12	WEATHER Fair
Zapf				Bridge # 12.74	
Schwartz				SEC. Bett's ville North	TEMP. 30°
DESCRIPTION	Delta's			JOB NO.	
	LEFT	CENTER LINE	RIGHT		

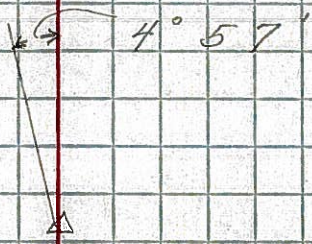
(67)

P.I.
 678+03.50
 $\Delta = 2^{\circ} 32' RT$
 Set P.K. Nail
 90' from sta.
 678+93.50



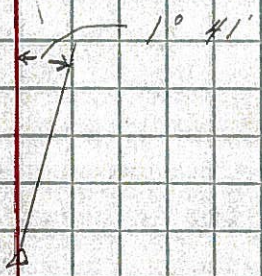
(64)

P.I.
 670+05.02
 $\Delta = 4^{\circ} 57' Lt$
 Set P.K. Nail
 Had one good tie



(62)

P.I.
 664+40.75
 $\Delta = 1^{\circ} 41' RT$
 Found Iron Pipe
 set P.K. Nail
 on surface.



(61)

P.I.
 658+24.41
 $\Delta = 0^{\circ} 40' Lt$
 Found P.K. Nail

