

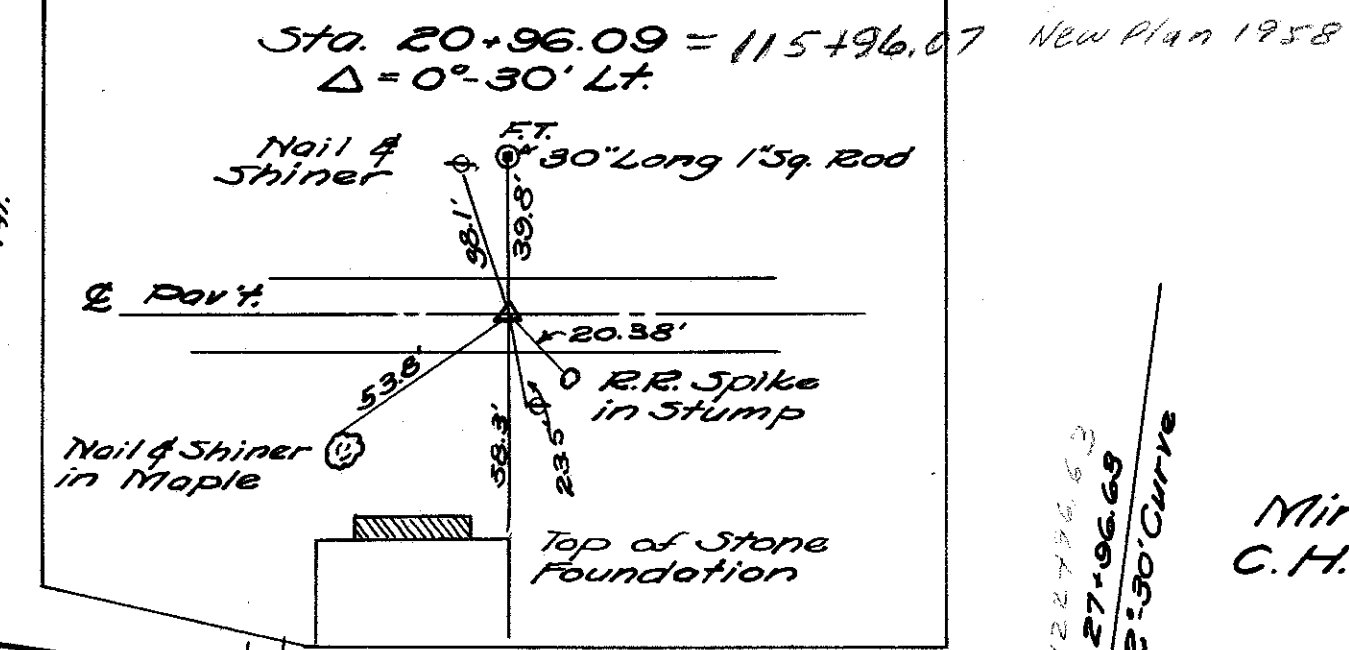
SENECA COUNTY
S.H. 270
SEG. A (PT.)
R/W PLANS

Date: Aug. 16/40 Drawn By: R.J.
 Revised Length of Project - 2214 Lin. Ft. - 0.425 Miles.

SEC. 8 T-2-N R-13-E LOUDON TWP.

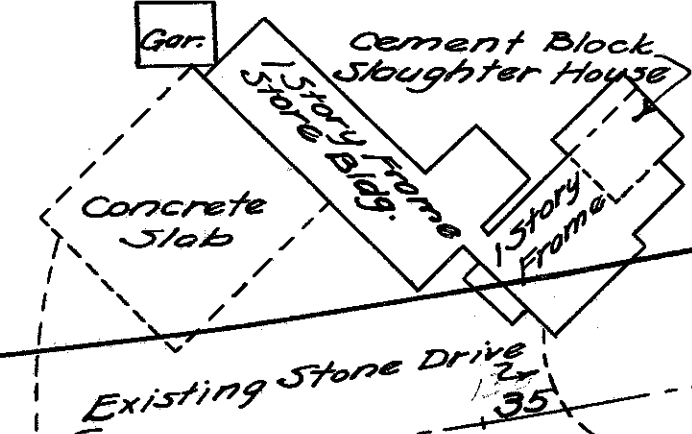
Curve Data
 $\Delta = 43^{\circ}36'$
 $D = 2^{\circ}30'$
 $T = 1054.80$
 $L = 1944.0'$
 $P.C. = 27+96.63$
 $P.T. = 47+40.63$
 $P.I. = 38+31.43$

R/W checked
 OK as shown
 F.J.F.
 3/24/44



12
 Minnie Mathers & - 219 County Line St.
 C.H. Arnold Et. Al. - 542 College Ave.
 Fostoria, O.

16
 M.J. Kiefer



Drive Relocated
 from Sta. 38+18

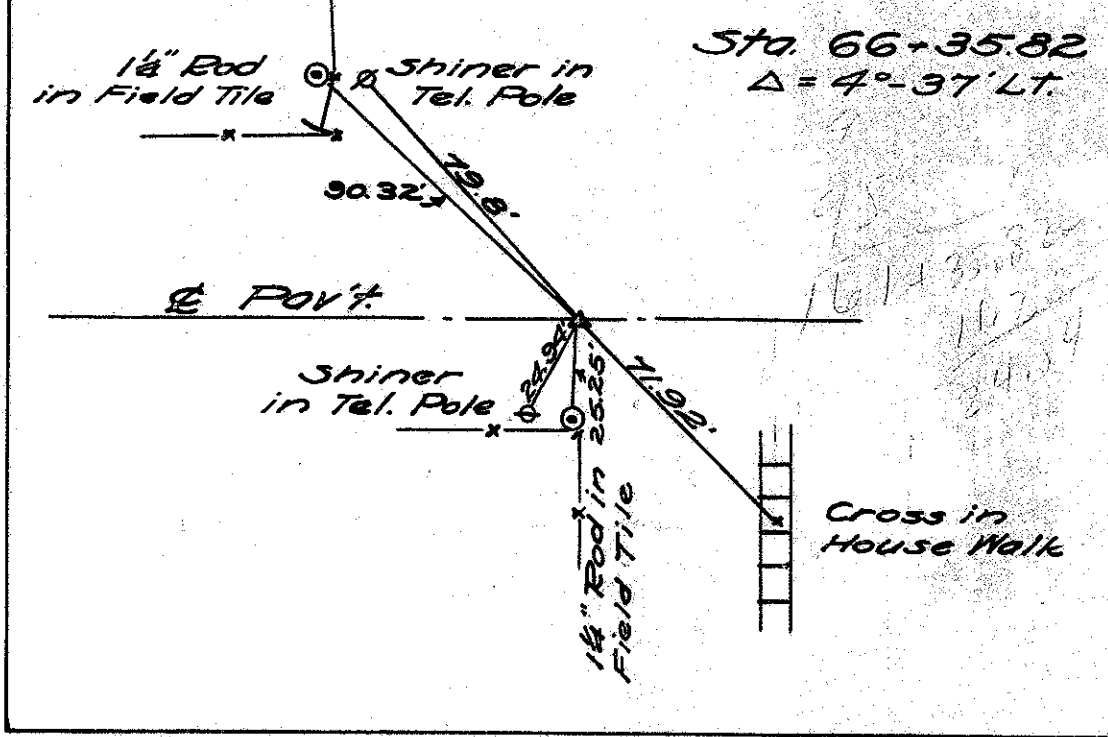
15
 Fred W. & Lula M. Schorf
 621 N. Union St.
 Fostoria, O.

SEC. 17 T-2-N R-13-E LOUDON TWP.

SEC. 17 T-2-N R-13-E LOUDON TWP.

& Bridge
 Sta. 38+59.5
 (0+00 & Channel)

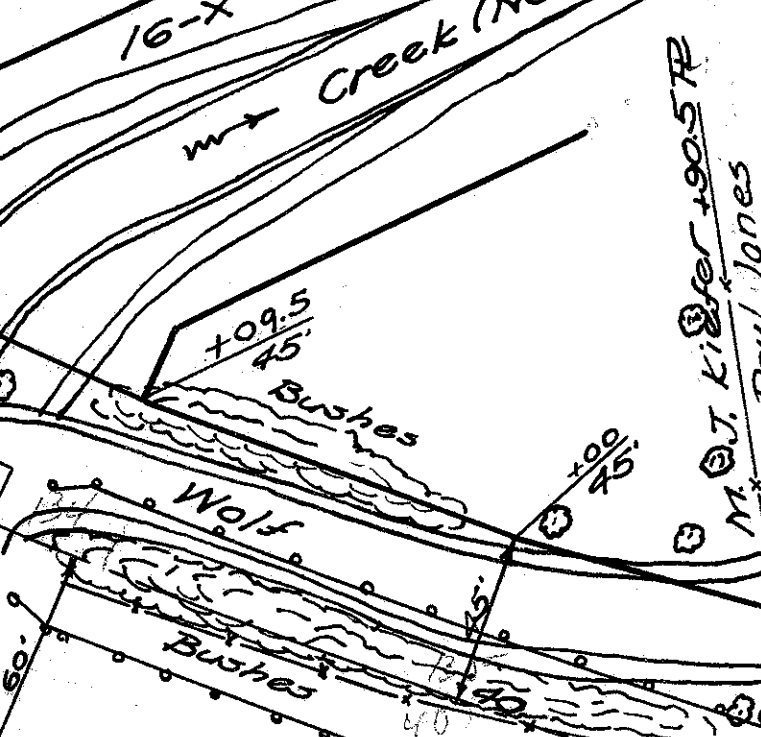
18
 John Paul Jones
 639 Columbia St.
 Fostoria, O.



13
 J.F. French
 R.F.D. #3
 Fostoria, O.

14
 Alverda Snyder

16
 M.J. Kiefer



15
 Fred W. & Lula M. Schorf

John Paul Jones

SEC. 17 T-2-N R-13-E LOUDON TWP.

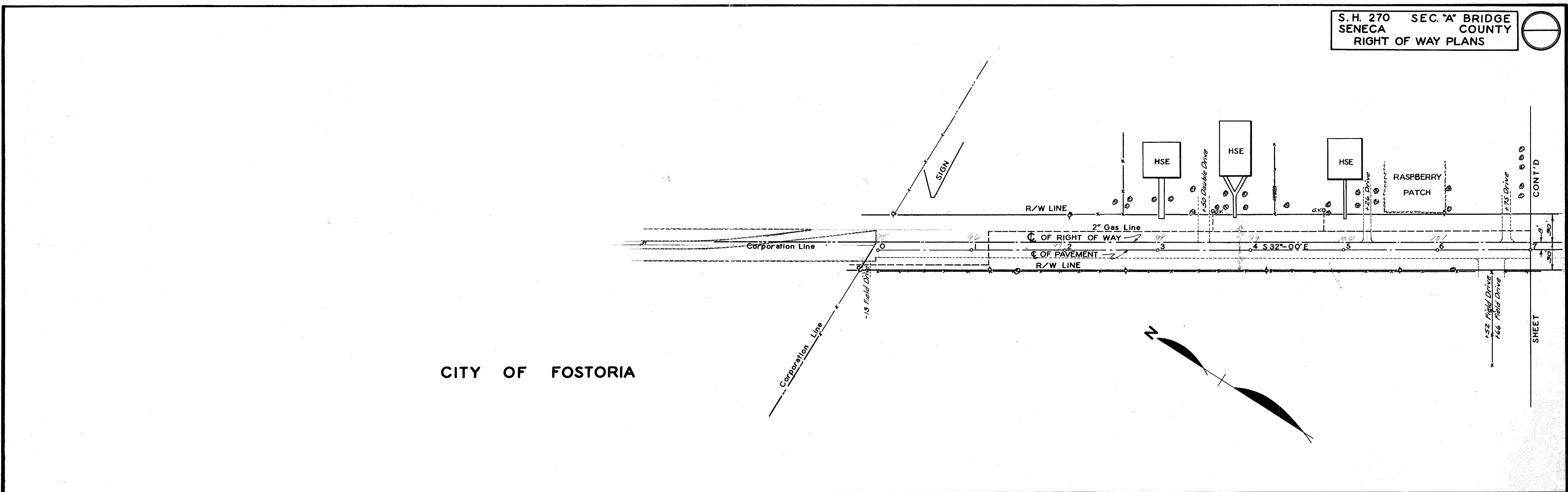
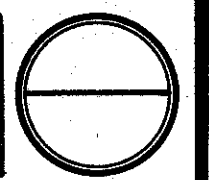
Scanned
 July 14/47

R-6018
 2 G-21

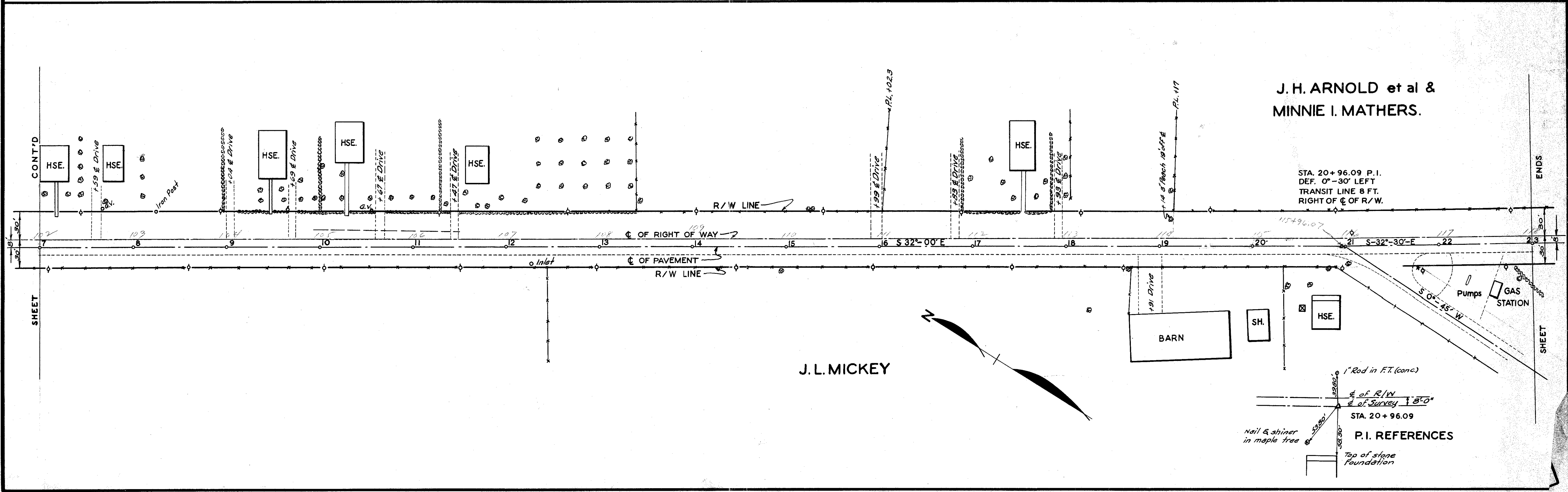
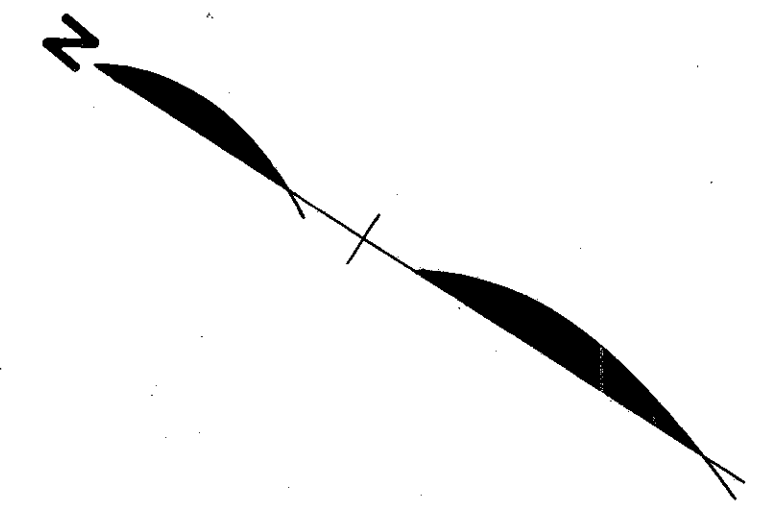
G-21

Scanned
July 14/17

S.H. 270 SEC. 'A' BRIDGE
SENECA COUNTY
RIGHT OF WAY PLANS



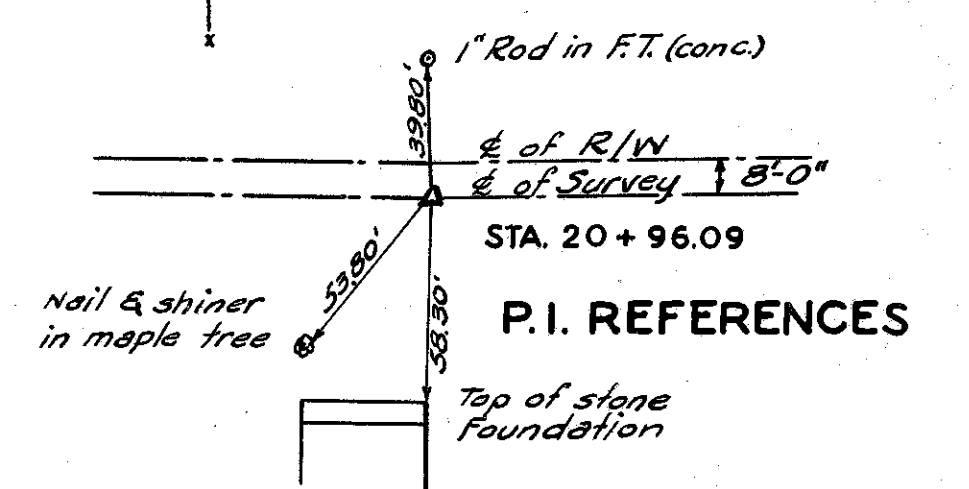
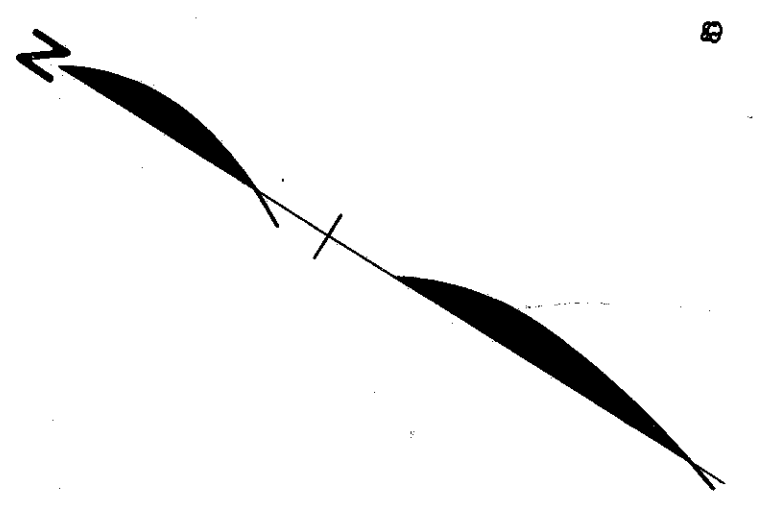
CITY OF FOSTORIA

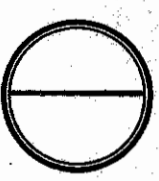


J. H. ARNOLD et al &
MINNIE I. MATHERS.

STA. 20+96.09 P.I.
DEF. 0'-30' LEFT
TRANSIT LINE 8 FT.
RIGHT OF C. OF R/W.

J. L. MICKEY





Scanned
July 1997

