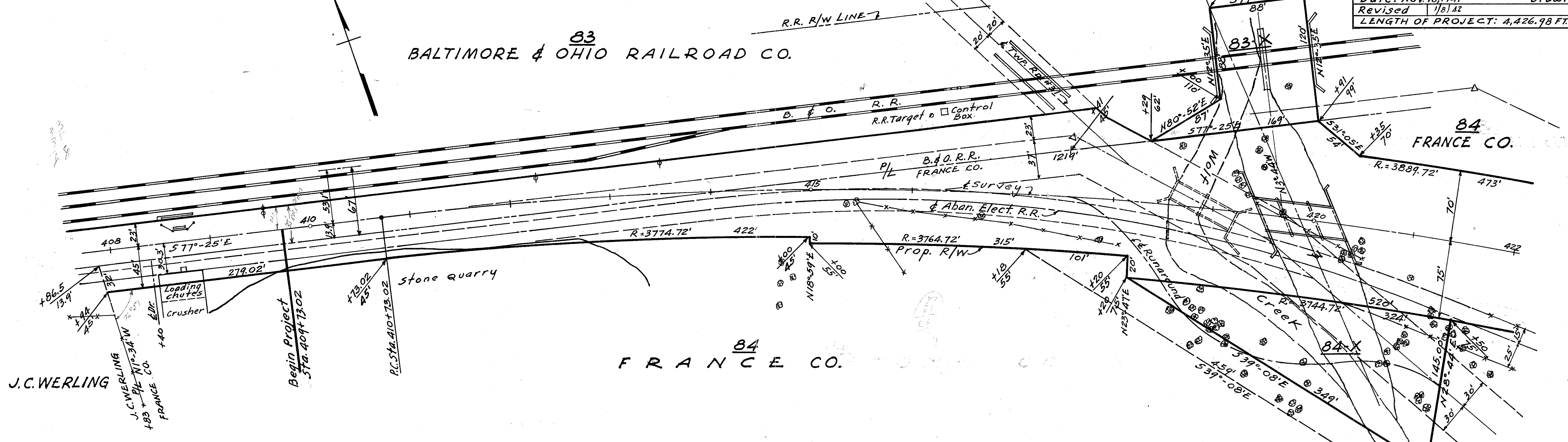


SEC. 16 T. 2-N R. 14-E HOPEWELL TWP.

SENECA COUNTY
 S.H. 270 SEC. C (PT)
 R/W PLANS

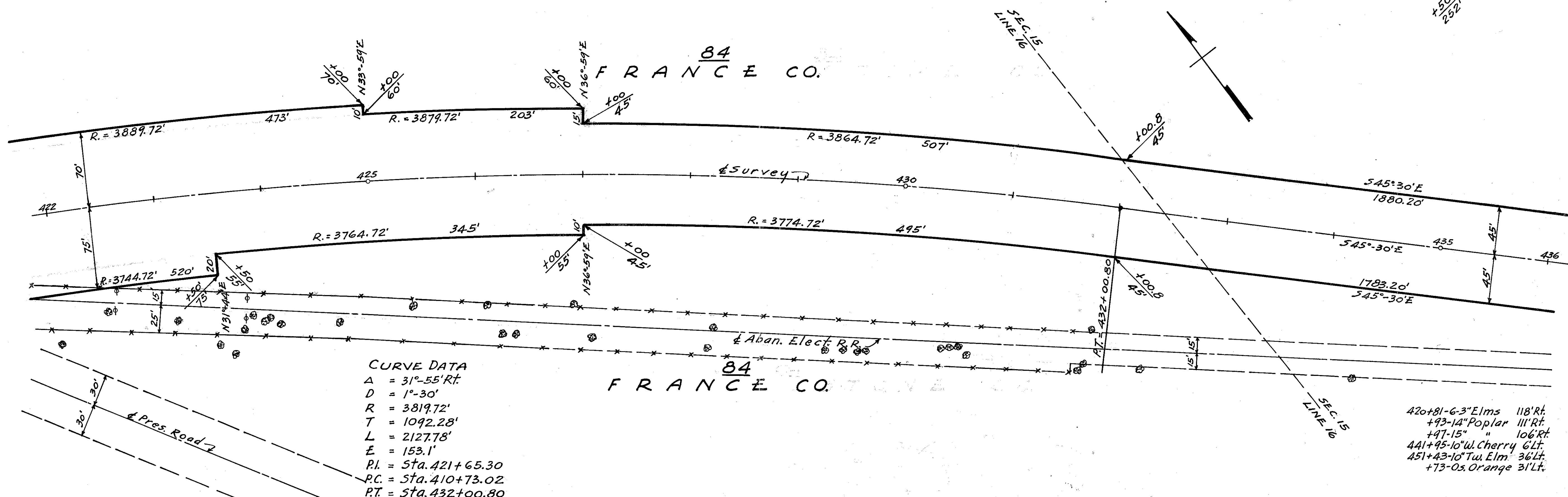
Date: Nov. 10, 1941
 Revised: 1/18/42
 Drawn By: HH
 LENGTH OF PROJECT: 4,426.98 FT. = 0.838 MI.

BALTIMORE & OHIO RAILROAD CO.



SEC. 16 T. 2-N R. 14-E HOPEWELL TWP.
 SEC. 16 T. 2-N R. 14-E HOPEWELL TWP.

SEC. 15



CURVE DATA

A = 31°-55' Rt
 D = 1°-30'
 R = 3819.72'
 T = 1092.28'
 L = 2127.78'
 E = 153.1'
 P.I. = Sta. 421+65.30
 P.C. = Sta. 410+73.02
 P.T. = Sta. 432+00.80

SCHEDULE OF TREES TO BE REMOVED
 (FOR BALANCE OF TREES SEE CONSTRUCTION PLANS-SH. #22)

415+34-12" Poplar	12.6 Rt
+42-12" "	12.4 Rt
416+67-9" "	23' Rt
417+87-9" "	39' Rt
418+66-60" Willow	61 Lt
+77-10" Poplar	94 Lt
+80-6" "	100 Rt
+84-10" "	107 Rt
+87-6" "	132 Rt
+87-10" "	99 Rt
+95-12" "	111 Rt
419+00-9" "	114 Rt
+01-6" Tu.	111 Rt
+02-9" "	115 Rt
+11-14" "	121 Rt
+15-9" "	132 Rt
+16-12" "	128 Lt
+18-48" Willow	37 Lt
+23-48" "	32 Lt
+28-48" "	27 Lt
+34-48" "	20 Lt
+42-4" Elm	62 Lt
+49-14" "	76 Lt
+52-16" Poplar	125 Rt
+56-18" Os. Orange	50 Lt
+73-5" Poplar	2 Lt
+75-12" "	127 Lt
+95-7" Elm	140 Rt
420+07-9" Tu. Poplar	159 Rt
+33-6-2-5" Elms	31 Rt
+41-12" Poplar	24 Rt
+43-12" "	20 Rt
441+45-10" W. Cherry	6 Lt
451+43-10" Tu. Elm	36 Lt
+73-9" Willow	131 Rt
+77-36" "	130 Rt

SEC. 16 T. 2-N R. 14-E HOPEWELL TWP. SEC. 15

Examined July 1947

R6018 #3 G20

Scanned July 1947

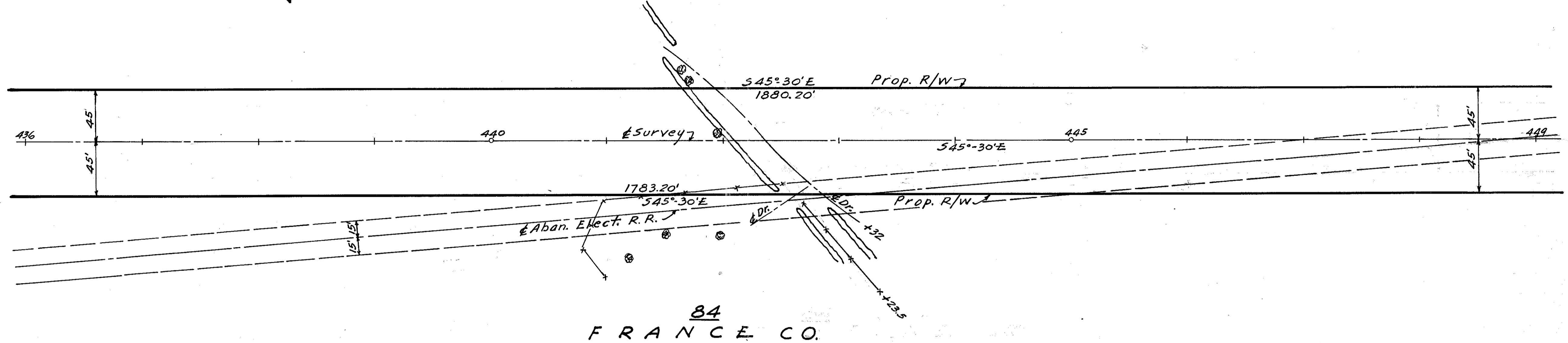
SEC. 15 T-2-N R-14-E HOPEWELL TWP.

SENECA COUNTY
S.H. 270 SEC. C (PT)
R/W PLANS

2
2

Date: Nov. 10, 1941 Drawn By: HH
Revised 1/8/42 2/4/42
LENGTH OF PROJECT: 4,426.98 FT. = 0.838 MI.

84
FRANCE CO.



84
FRANCE CO.

SEC. 15 T-2-N R-14-E HOPEWELL TWP. SEC. 22
T-2-N R-14-E HOPEWELL TWP.

84
FRANCE CO.

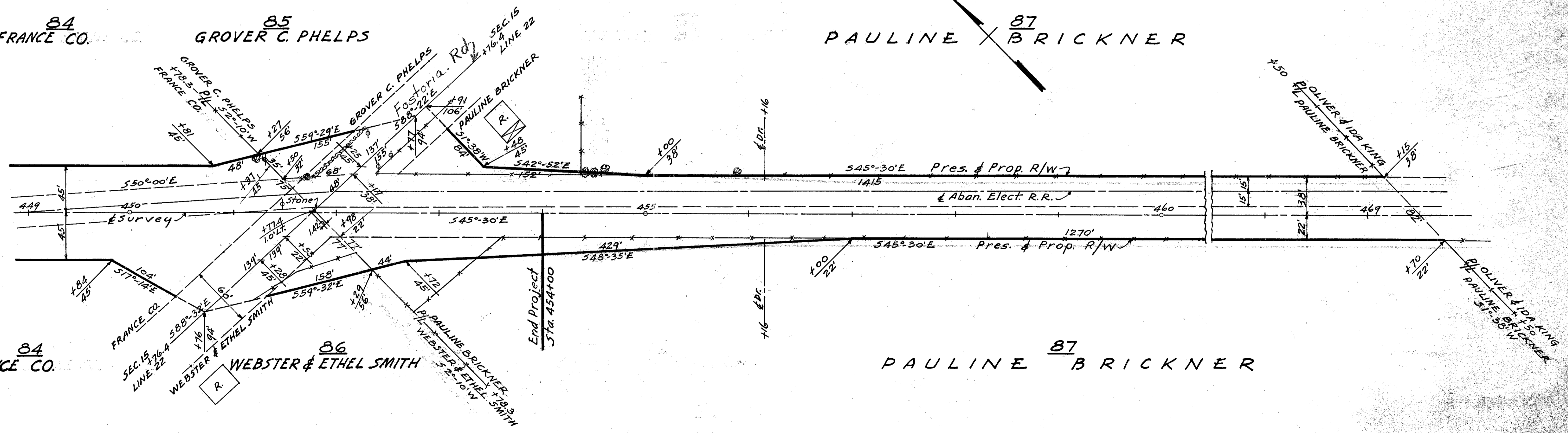
85
GROVER C. PHELPS

87
PAULINE BRICKNER

84
FRANCE CO.

86
WEBSTER & ETHEL SMITH

87
PAULINE BRICKNER



SEC. 22 T-2-N R-14-E HOPEWELL TWP.