

FED. RD. DIST. NO.	STATE	PROJECT	FISCAL YEAR
	OHIO		1945

SENECA COUNTY  
S.H. 219 SEC. TIFFIN  
S.H. 199 SEC. TIFFIN (PT.)

# STATE OF OHIO

## DEPARTMENT OF HIGHWAYS

### FINDLAY-TIFFIN ROAD

### S.H. 219 SEC. TIFFIN

### BUCYRUS-TIFFIN ROAD

### S.H. 199 SEC. TIFFIN (PT.)

## SENECA COUNTY

### CITY OF TIFFIN

### CONVENTIONAL SIGNS

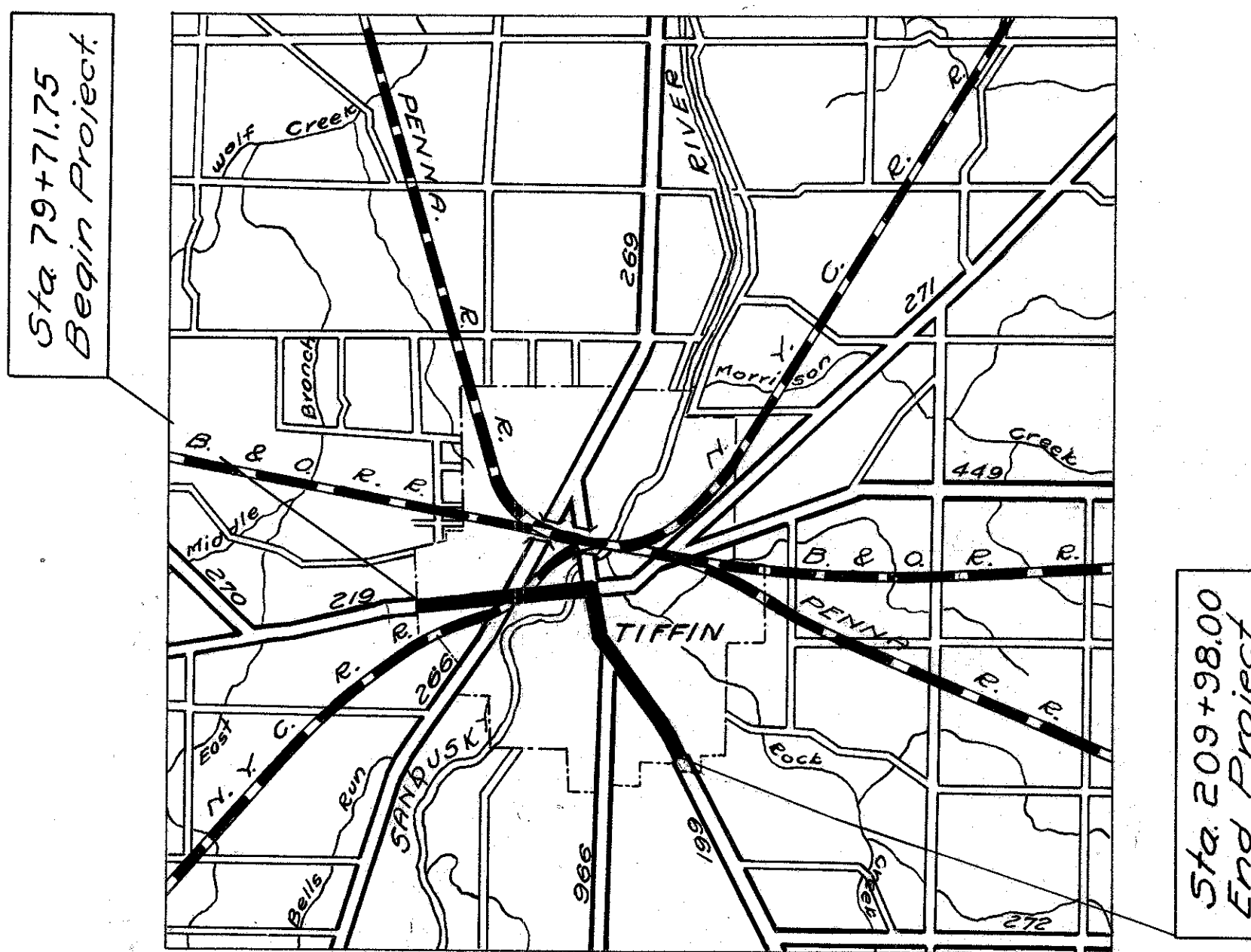


### INDEX OF SHEETS

TITLE SHEET	1
TYPICAL SECTION	2
PLAN AND PROFILE	3-11
SUMMARY	11-12

### LINE DATA

Begin Project Sta. 79+71.75  
End S.H. 219, Sec. Tiffin, Sta. 144+03.05  
Gross Length S.H. 219, Sec. Tiffin = 6431.30 Lin. Ft.  
Deduction for railroad:-  
Sta. 120+54.0 to 120+66.7 = 12.7 Lin. Ft.  
Net Length S.H. 219, Sec. Tiffin 6418.60 Lin. Ft. = 1.215 Mi.  
Begin S.H. 199, Sec. Tiffin (Pt.) Sta. 144+03.05  
End Project Sta. 209+98.00  
Net Length S.H. 199, Sec. Tiffin (Pt.) = 6594.95 Lin. Ft. = 1.249 Mi.  
Net Length of Project = 6418.60 + 6594.95 = 13013.55 Lin. Ft. = 2.464 Mi.



AVERAGE HAUL ~ 1 MILE  
DELIVERY POINT ~ TIFFIN

### LOCATION PLAN

SCALE 1" = 1 MILE

PORTION TO BE IMPROVED  
STATE HIGHWAYS  
OTHER ROADS

### SCALES

PLAN 1" = 50'  
PROFILE HORIZONTAL 1" = 50'  
PROFILE VERTICAL 1" = 5'

The Standard Specifications of the State of Ohio Department of Highways, including changes and Supplemental Specifications listed in the proposal shall govern this improvement.

I hereby approve these plans and declare that the making of this improvement will not require the closing to traffic of the highway and that provisions for the maintenance and safety of traffic will be as set forth on the plans and estimates.

The right-of-way necessary for this improvement will be provided by the State of Ohio.

Approved: Arnold V. Finch  
Date, 8/2/45 Resident Division Deputy Director

Approved: \_\_\_\_\_  
Date, \_\_\_\_\_ Chief Engineer, Bureau of Maintenance.

Approved: \_\_\_\_\_  
Date, \_\_\_\_\_ Chief Engineer, Bureau of Bridges & R.R. Crossings.

Approved: Wm. D. Shaffer  
Date, 9/1/45 Chief Engineer, Bureau of Location & Design.

Approved: Elwin W. Ellis P.E. 547  
Date, 9-4-45 First Asst. Director & Chief Engineer.

Approved: Perry T. Ford  
Date, 9-4-45 Director of Highways.

FILE No.	SENECA COUNTY
	S.H. 219 SECTION TIFFIN
	S.H. 199 SECTION TIFFIN (PT.)
	DATE OF LETTING, _____
	CONTRACT No. _____

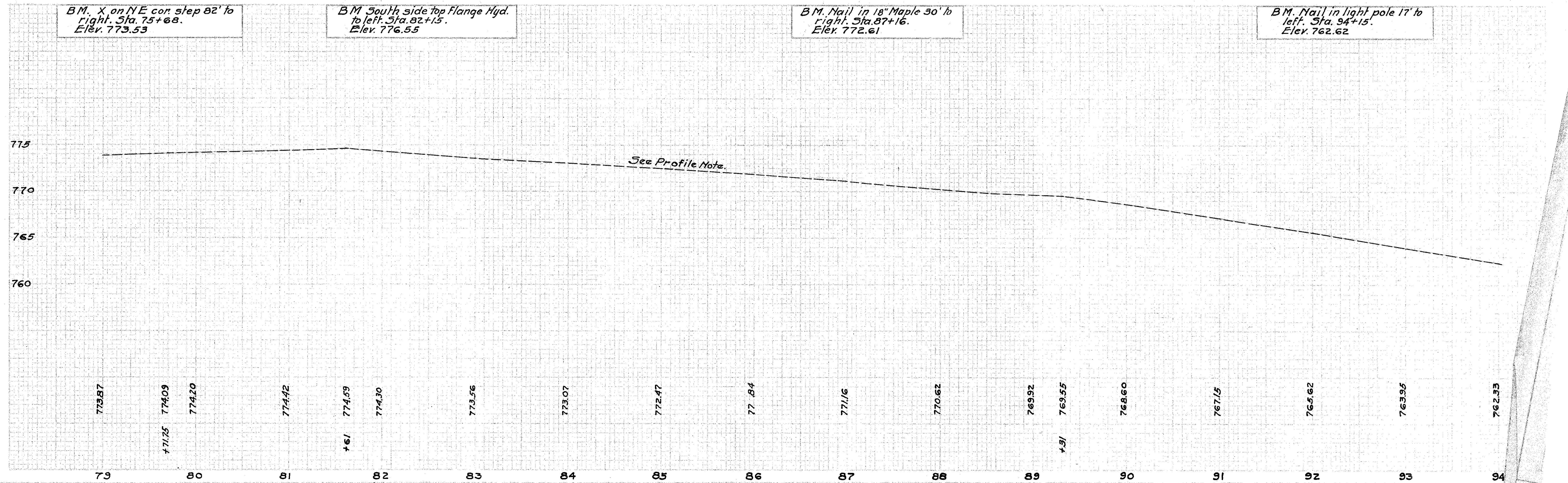
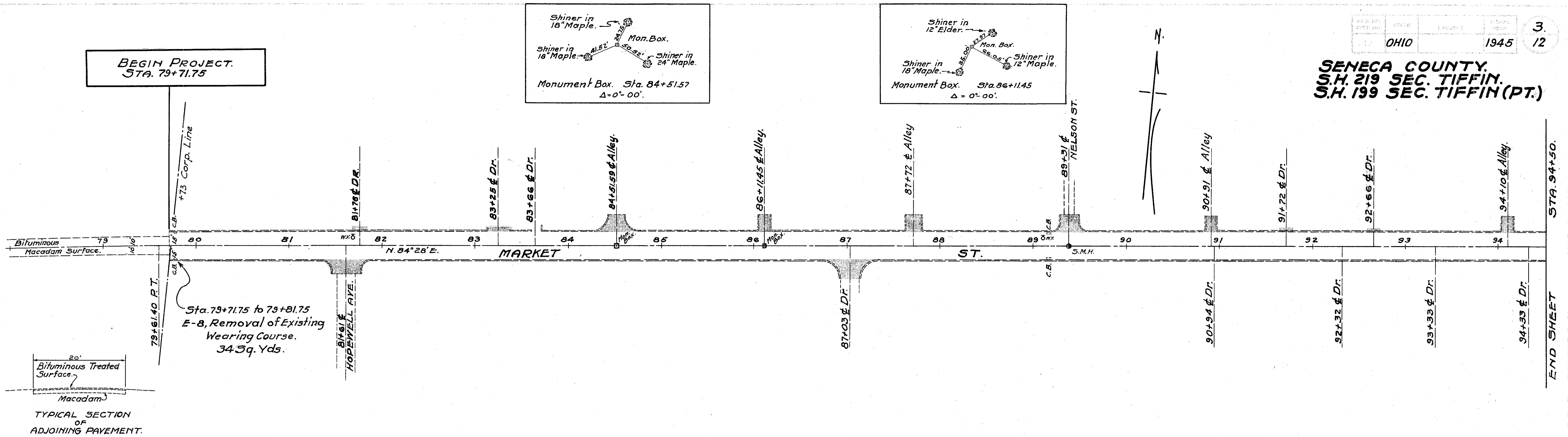
STANDARD DRAWINGS	
G-7.07	6-1-42

SUPPLEMENTAL SPECIFICATIONS	
178	Rev. 4-21-44
M-102.12	8-2-43

CONSTRUCTION BUREAU  
JUL 14 1955  
GROUND PHOTOLAB

STATE	OHIO
YEAR	1945

SENECA COUNTY.  
S.H. 219 SEC. TIFFIN.  
S.H. 199 SEC. TIFFIN (PT.)



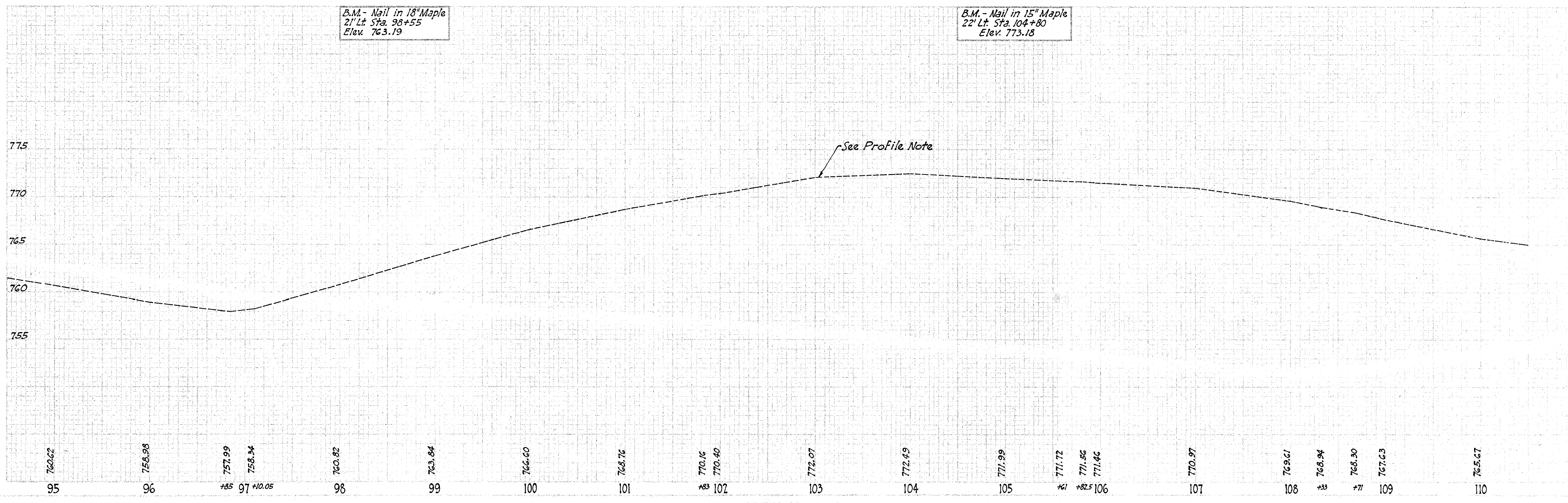
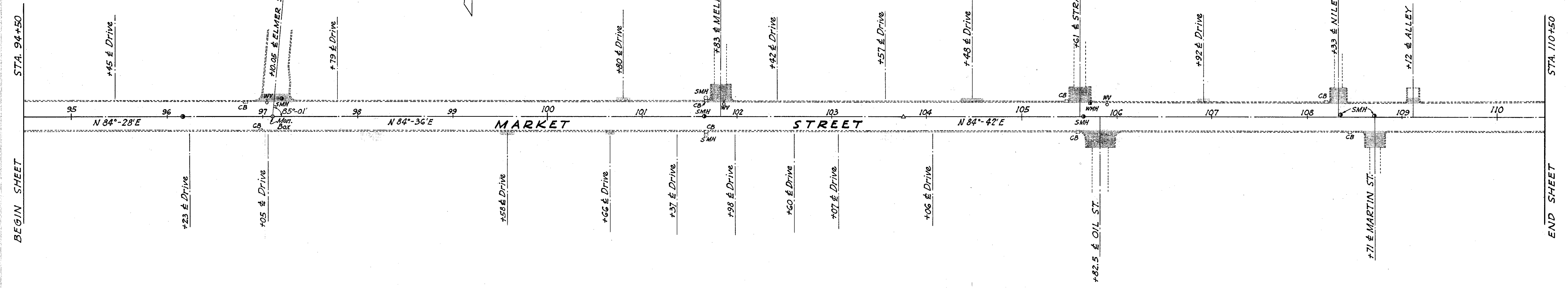
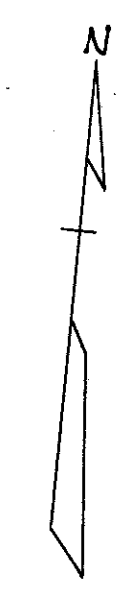
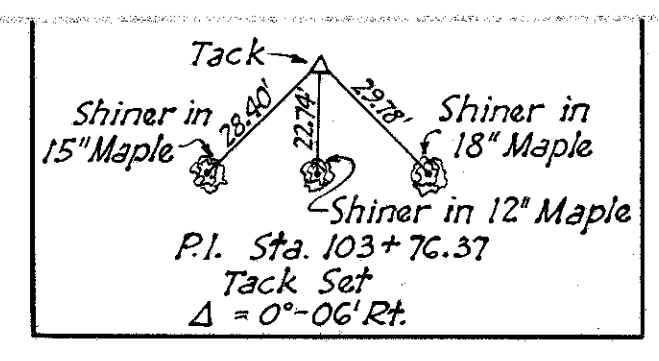
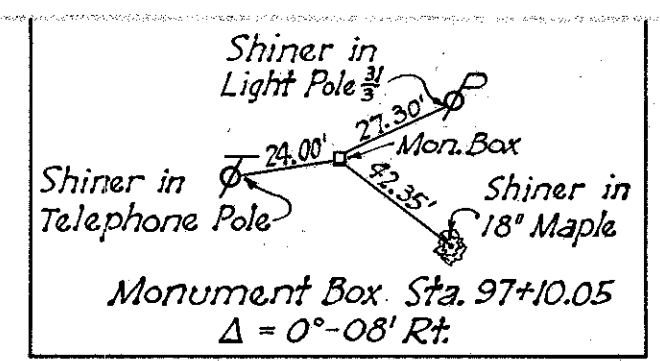
END SHEET STA. 94+50.



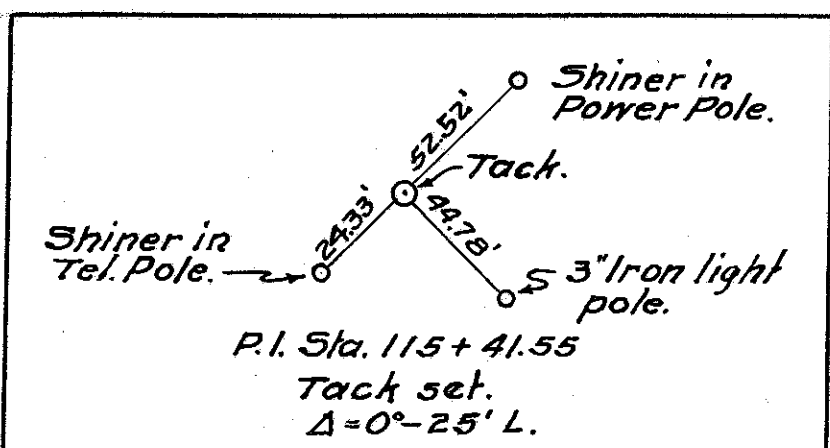
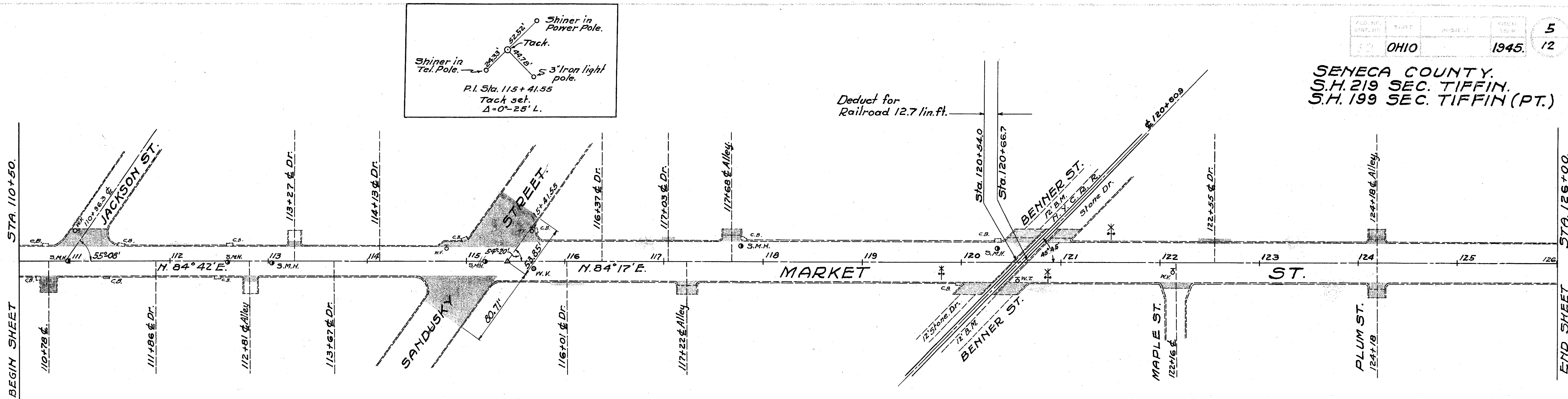
STATE	COUNTY	SECTION	SHEET
OHIO	SENECA	219	4

12

SENECA COUNTY  
S.H. 219 Sec. TIFFIN  
S.H. 199 Sec. TIFFIN (Pt)



SENECA COUNTY,  
S.H. 219 SEC. TIFFIN.  
S.H. 199 SEC. TIFFIN (PT.)

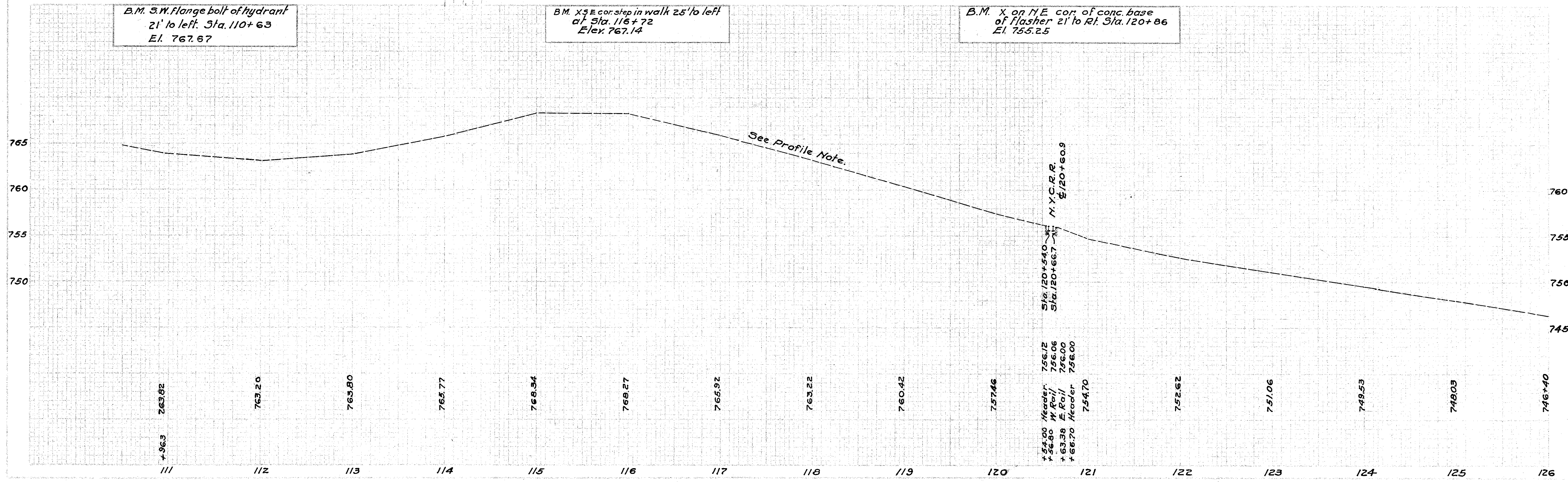


Deduct for  
Railroad 12.7 lin.ft.

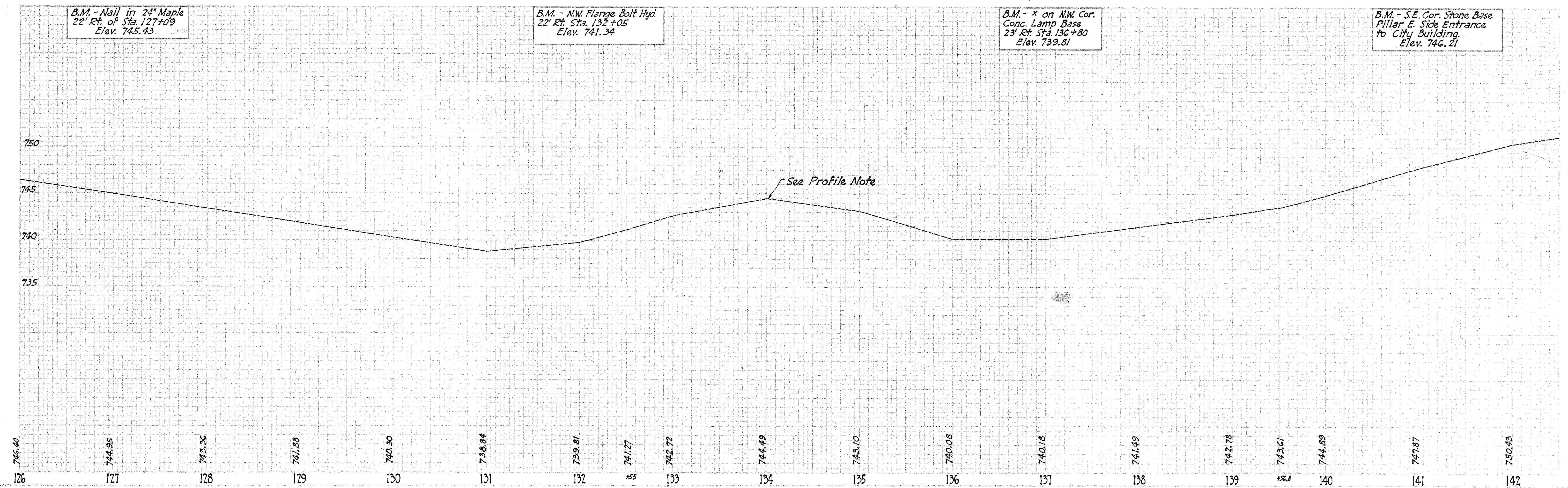
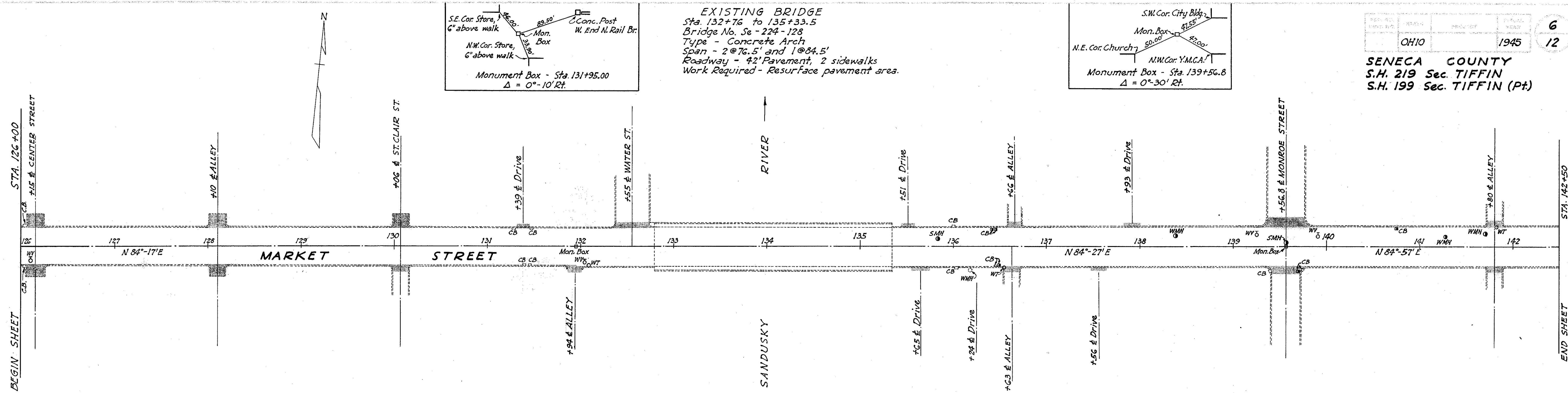
B.M. S.W. flange bolt of hydrant  
21' to left Sta. 110+63  
Elev. 767.67

B.M. X SE cor. step in walk 25' to left  
of Sta. 116+72  
Elev. 767.14

B.M. X on NE cor. of conc. base  
of flasher 21' to Rt. Sta. 120+86  
Elev. 755.25

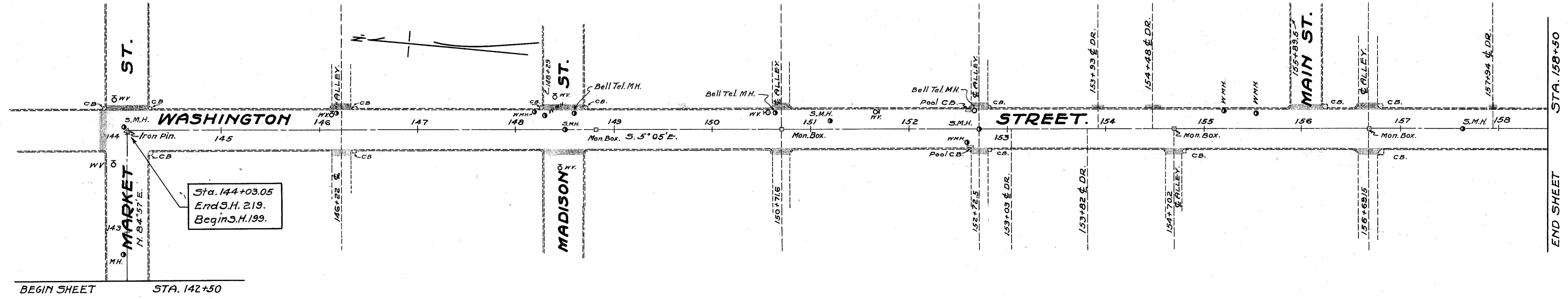
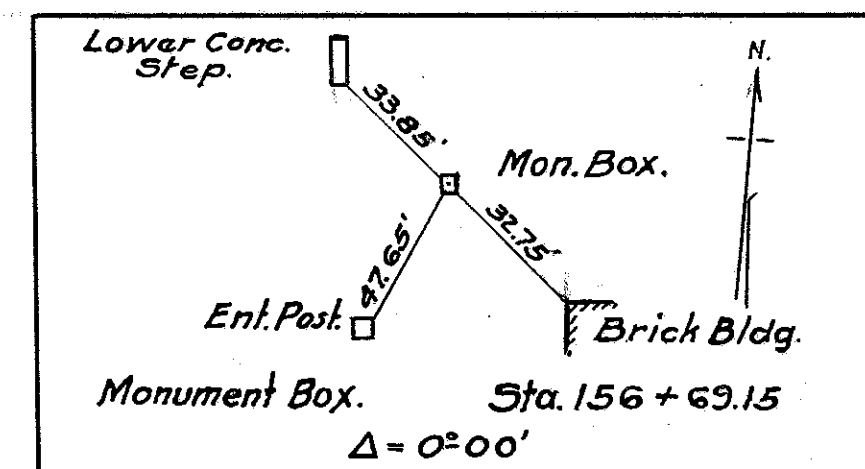
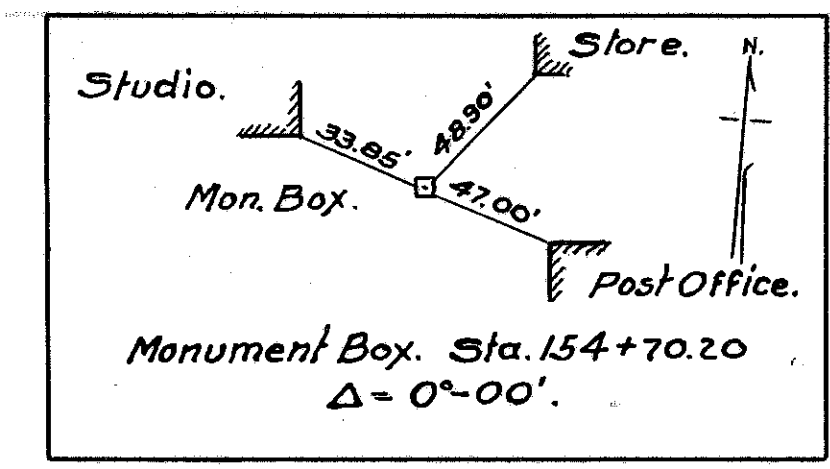
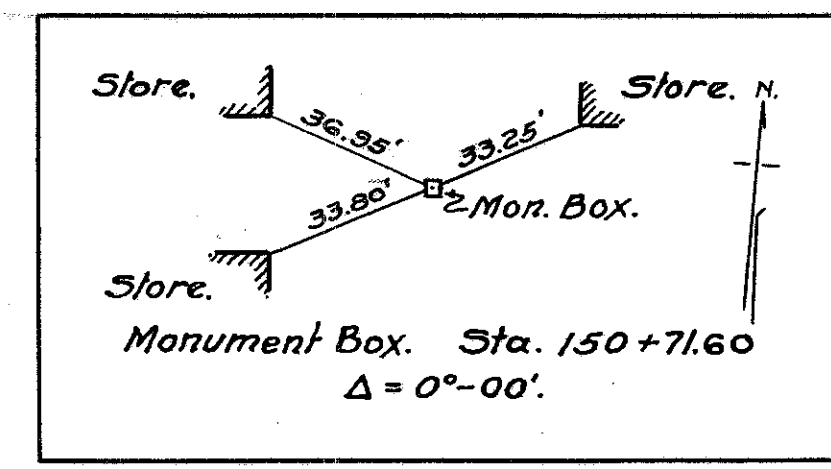
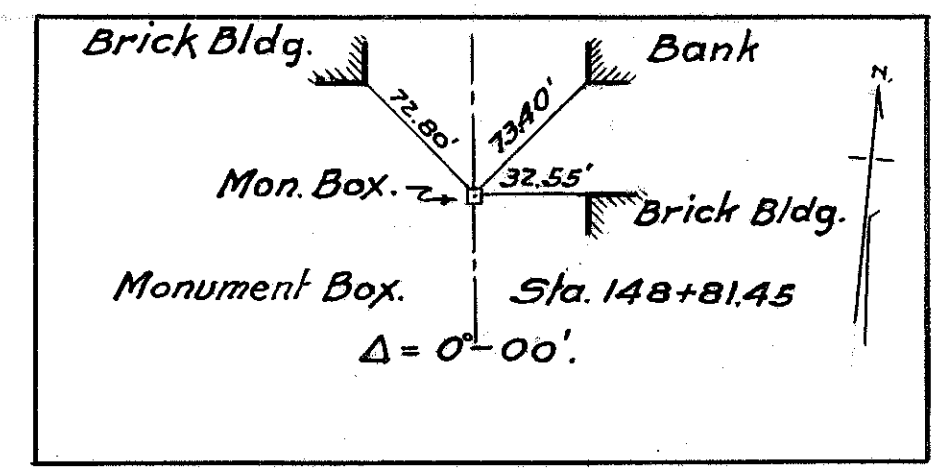
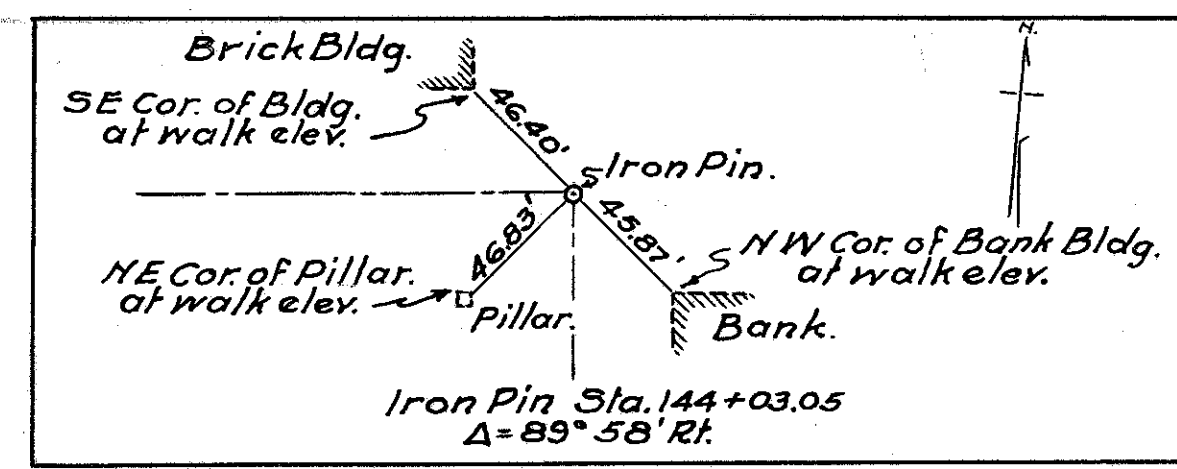








SENECA COUNTY.  
S.H. 219. SEC. TIFFIN.  
S.H. 199. SEC. TIFFIN. (PT.)

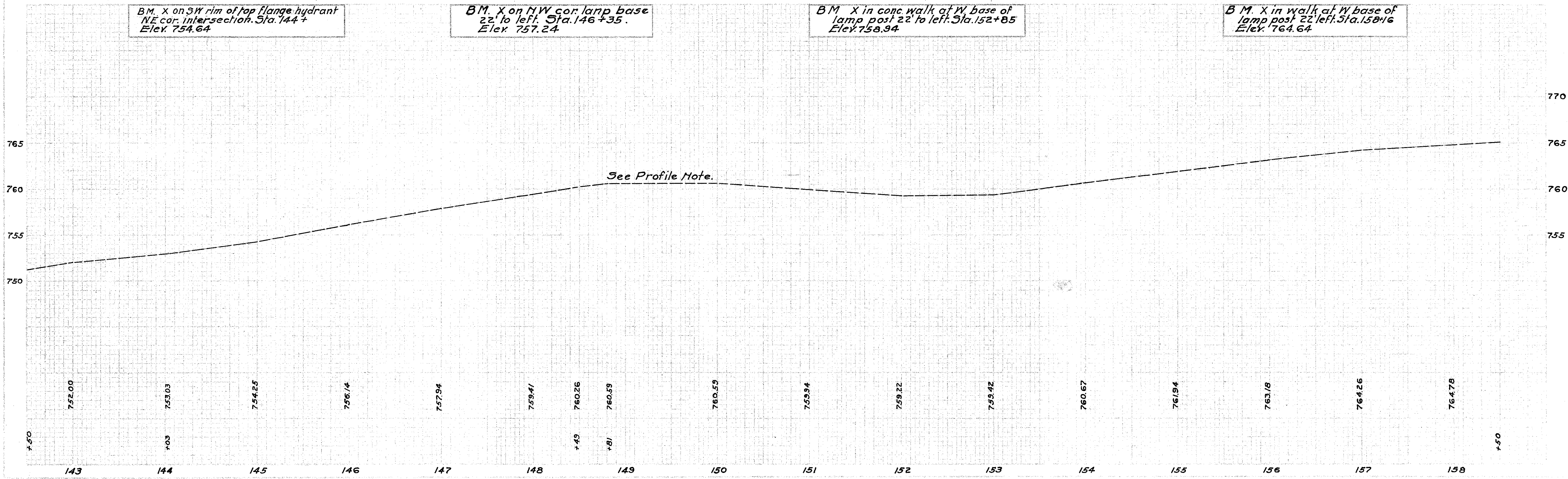


BM. X on SW rim of top flange hydrant  
NE cor. intersection. Sta. 144+  
Elev. 754.64

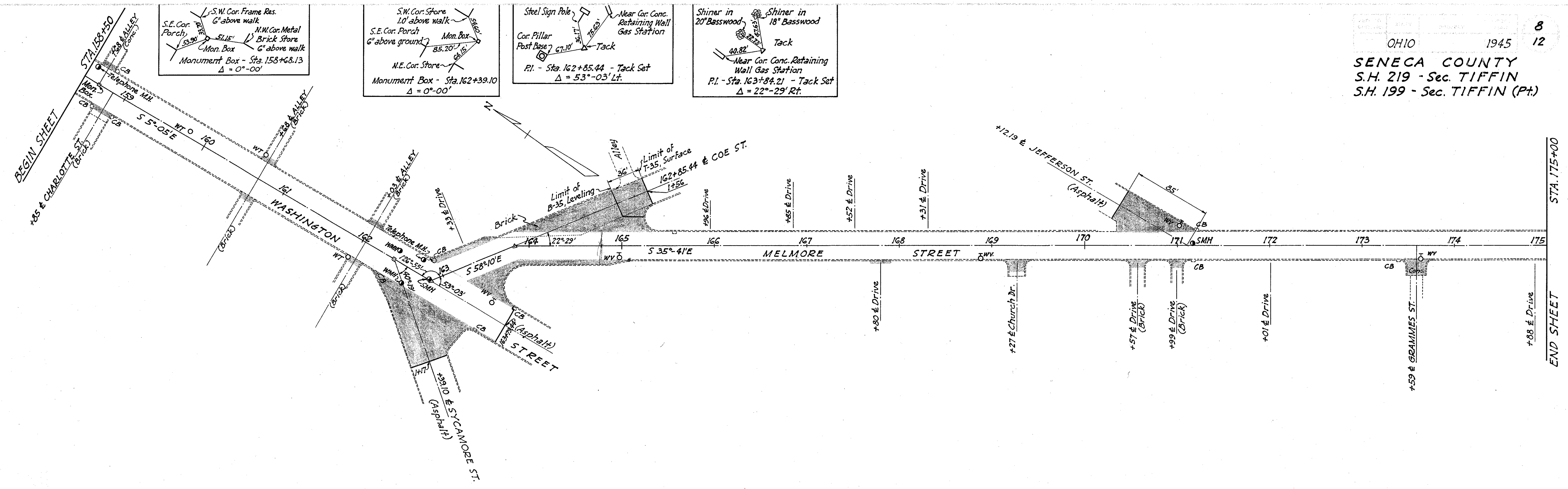
BM. X on NW cor. lamp base  
22' to left. Sta. 146+35.  
Elev. 757.24

BM. X in conc. walk at W base of  
lamp post 22' to left. Sta. 152+85  
Elev. 758.94

BM. X in walk at W base of  
lamp post 22' to left. Sta. 158+16  
Elev. 764.64



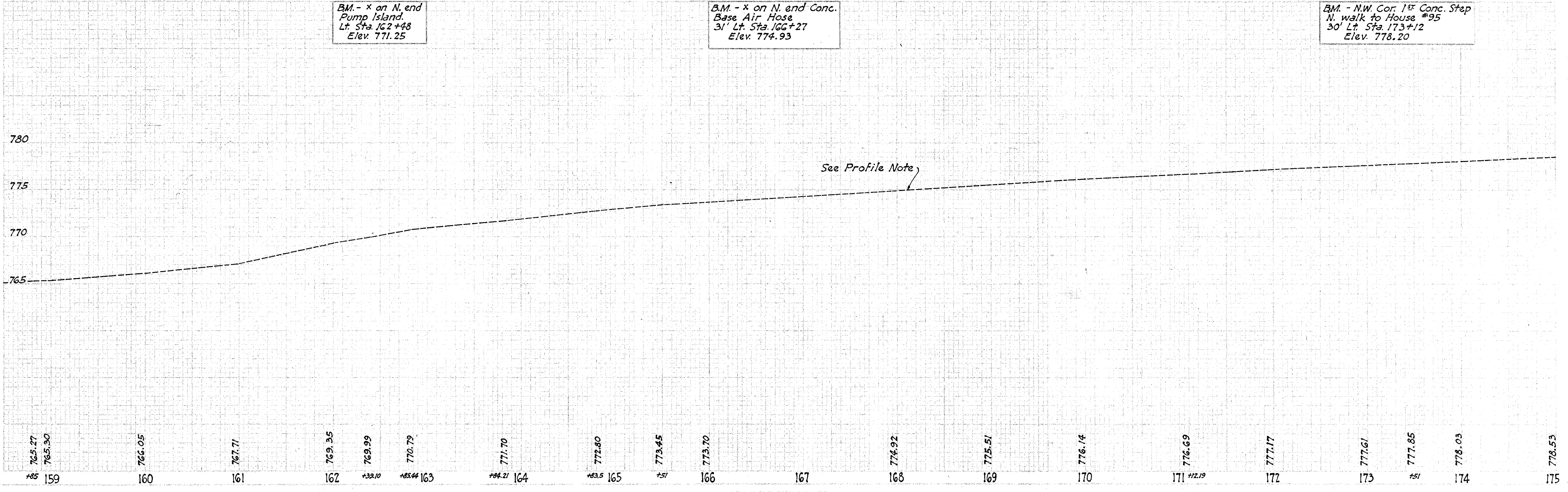




BM. - x on N. end Pump Island. Lt. Sta. 162+48 Elev. 771.25

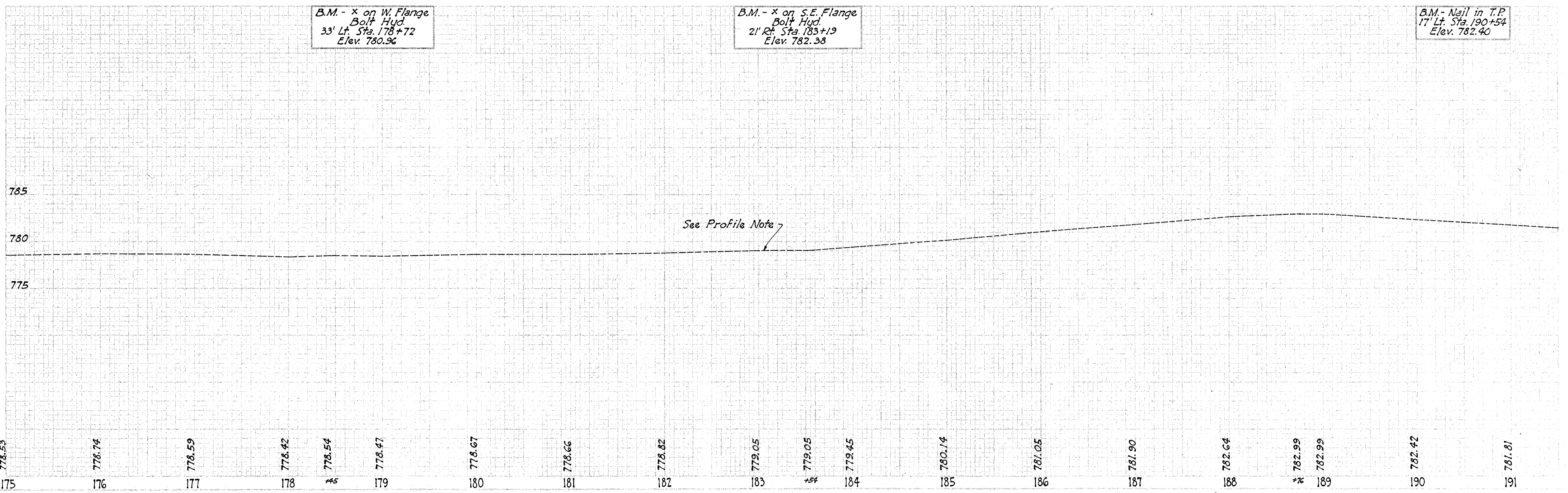
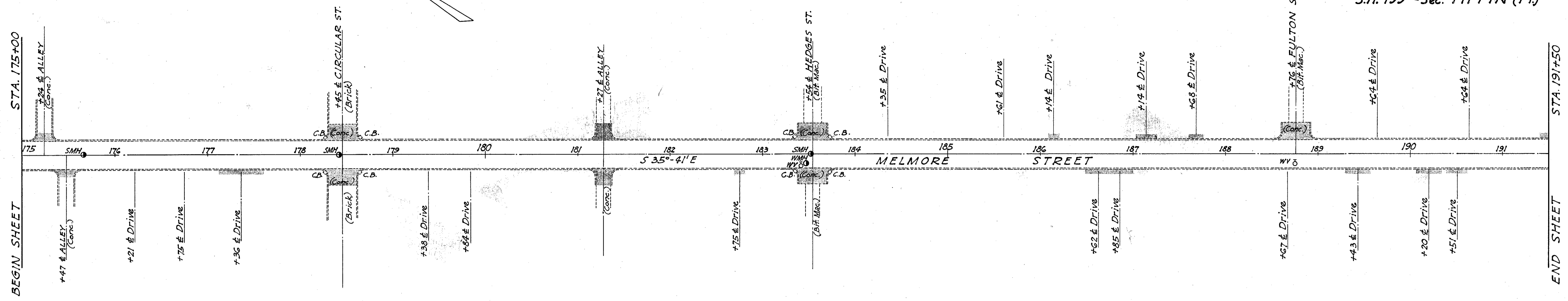
BM. - x on N. end Conc. Base Air Hose 31' Lt. Sta. 166+27 Elev. 774.93

BM. - N.W. Cor. 1<sup>st</sup> Conc. Step N. walk to House #95 30' Lt. Sta. 173+12 Elev. 778.20





SENECA COUNTY  
S.H. 219 - Sec. TIFFIN  
S.H. 199 - Sec. TIFFIN (Pt.)



FOR ANY QUESTIONS PLEASE CONTACT ODOT DISTRICT 2 REAL ESTATE AT 419-353-8131

BEGIN SHEET STA. 175+00

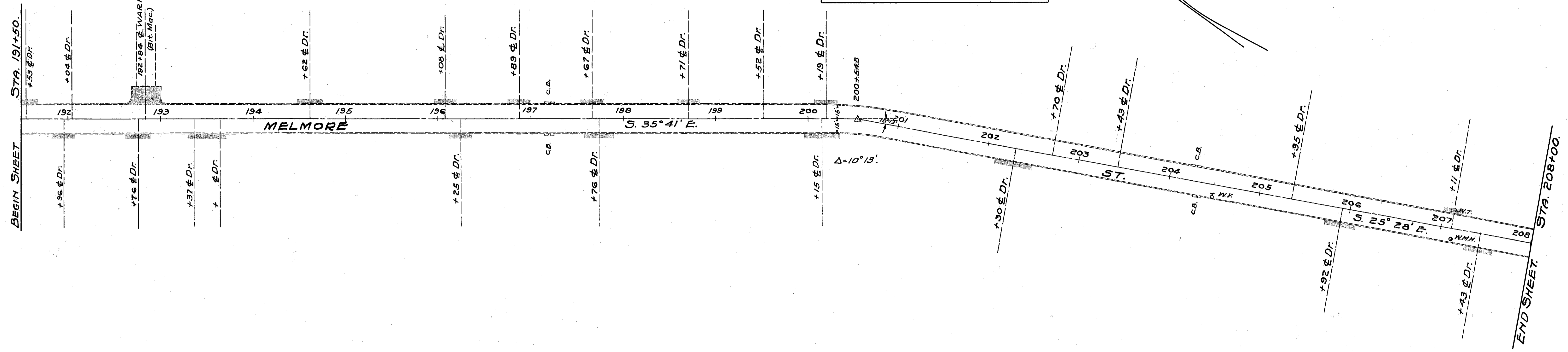
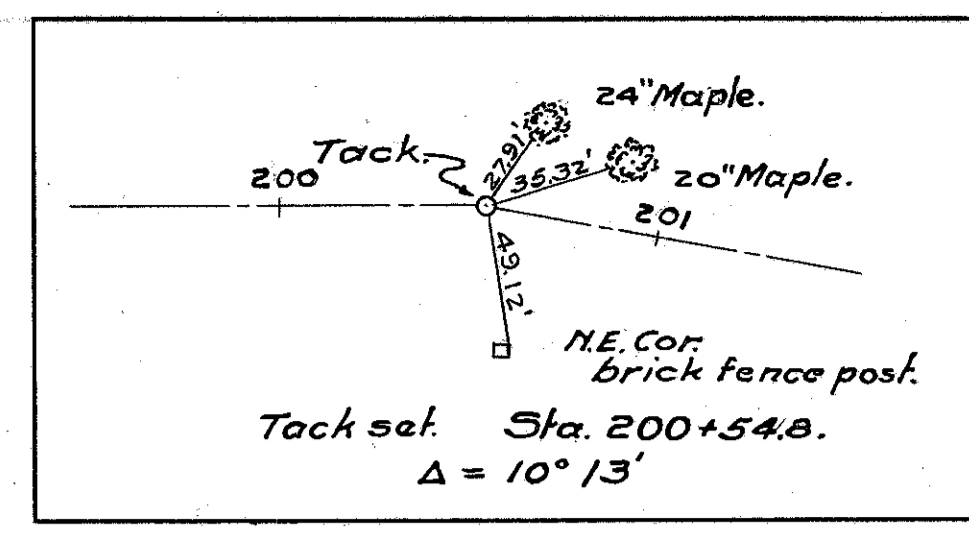
END SHEET STA. 191+50



FOR ANY QUESTIONS PLEASE CONTACT ODOT DISTRICT 2 REAL ESTATE AT 419-353-8131

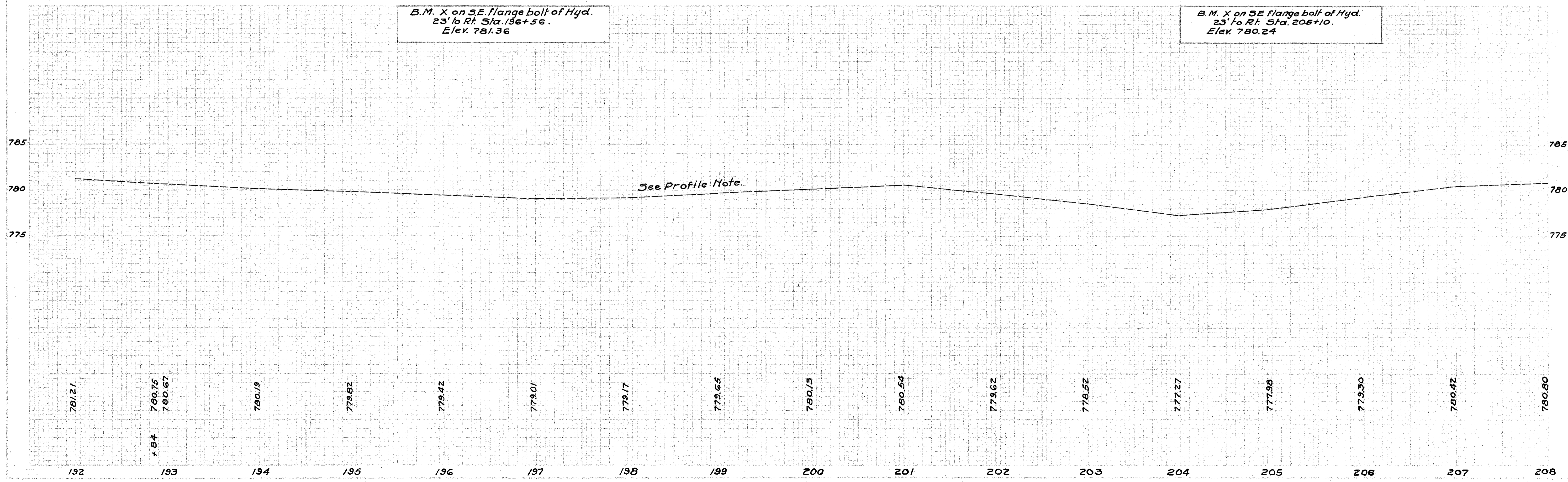
DATE	BY	REVISION	NO.
OHIO	1945		10
			12

SENECA COUNTY.  
S.H. 219, SEC. TIFFIN.  
S.H. 199, SEC. TIFFIN. (PT.)



B.M. X on S.E. flange bolt of Hyd.  
23' to Rt. Sta. 196+56.  
Elev. 781.36

B.M. X on SE Flange bolt of Hyd.  
23' to Rt. Sta. 206+10.  
Elev. 780.24





# GENERAL NOTES

SENECA COUNTY.  
S.H. 219, SEC. TIFFIN  
S.H. 199, SEC. TIFFIN. (PT.)

**TRAFFIC:**-Two way traffic shall be maintained at all times. The length of restricted traffic zones shall be kept to a minimum consistent with the requirements of Sec. T-35.23. In addition to the requirements of Sec. G-707, Barricades, Danger and Warning Signs, the Contractor shall display one "PLEASE -MEN WORKING ON ROAD" sign furnished by the State at each end of each restricted zone and in such a position as to be visible to traffic approaching the restricted zone.

The Contractor shall be responsible for the preservation of these signs, shall advance the signs as the work progresses and shall return the signs to the State at the completion of the work. The item of maintaining traffic shall include furnishing lights, signs (other than those mentioned above), barricades and watchmen, plus the displaying and advancing of the "PLEASE -MEN WORKING ON ROAD" signs to secure the flow of traffic twenty four (24) hours daily.

**PROFILE:**- The profile of the proposed surface course shall be approximately 1 3/4" above that of the existing pavement.

**PRIME COAT INCLUDING SAND COVER:**-Bituminous Prime Coat, Sec. M 5.5, MS-1 shall be applied by distributor or by brooms at the rate of 0.10 gal. per square yard. After the bituminous material has been applied, all material not required to give a uniform coating to the surface shall be swept into all cracks and open joints before the sand cover is placed. Sand cover shall be uniformly spread at a rate of from 2 to 5 pounds per square yard. The sand shall be spread at such time and shall be in such condition that it will adhere to the bituminous material. Payment for sand cover is included in the price bid per gallon for bituminous material.

**FILLING MAJOR DEPRESSIONS:**-Major depressions in existing pavement shall be filled and compacted with bituminous concrete leveling material in advance of placing the regular leveling course. These depressions shall be filled in layers not to exceed 3 inches in depth when compacted.

**RESETTING CASTINGS:**-This item shall be performed after completion of the leveling course and prior to placing the surface course. Compaction of the material around castings inaccessible to rollers shall be in accordance with the requirements of Sec. T-50.21. Portions of the existing pavement removed to adjust castings to the grade of the new surface shall be replaced full depth with Class "C" concrete. Necessary adjustment of the structure walls shall be made with Class "C" concrete. The cost of the concrete shall be included in the unit price bid for Item I-8, Reset Manhole Castings.

**SEALING EXISTING EDGES:**-Vertical surfaces of existing work, such as castings, curbs, etc. against which the new bituminous concrete is to be placed shall be painted or sealed with bituminous material in accordance with Section E-10.02. The cost of such operations and material shall be included in the price bid for bituminous concrete.

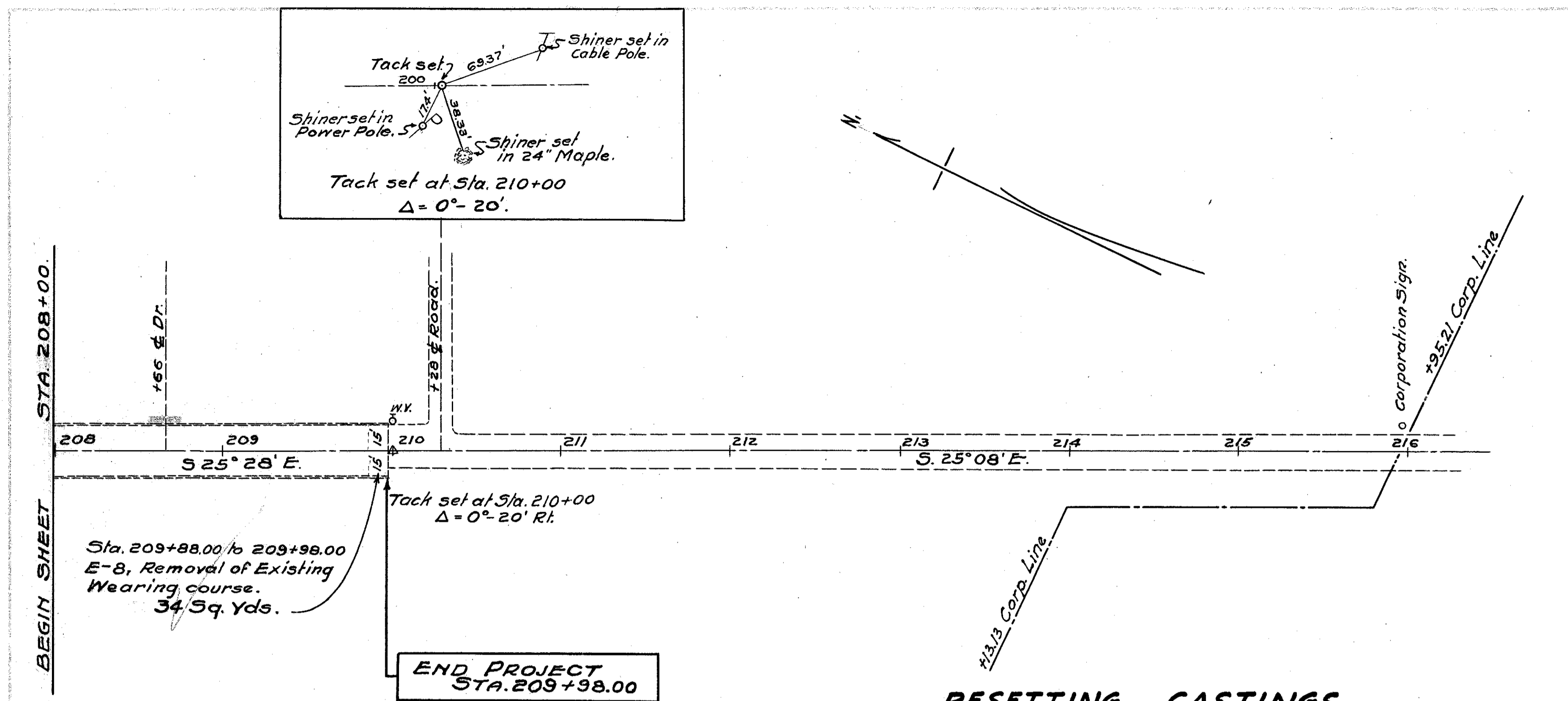
**TREATMENT OF FEATHERED AREA:**- Where directed the new surface course shall be feathered. The area upon which less than (1) inch of Surface course is to be placed shall be considered as the area to be feathered. A paint coat of the same bituminous material used in the mix shall be applied to this area before placing the bituminous surface course. The cost of such operation and material shall be included in the unit price bid for bituminous concrete.

**RAILROAD CROSSING:**-The new surface course shall be feathered to meet rail grades if necessary.

**GUTTER SEAL:**-After placing and compacting the bituminous concrete surface course, the gutter surface shall be sealed with the same bituminous material contained in the mixture. Only enough shall be applied to coat the surface for a distance of 15 inches from the curb or 30 inches for a "V" gutter. The material shall be applied by an approved method at a temperature of from 300 deg. F. to 350 deg. F. The cost of such operation and material shall be included in the price bid for bituminous concrete.

**CONTROL POINTS:**-Before construction operations begin the Engineer will reference all existing monuments, railroad spikes, iron bolts, etc. in the survey line. Upon completion of the surfacing, the Engineer will re-establish all these control points in the new pavement.

**UTILITIES:**-All work required to relocate or adjust etc., all gas, oil, telegraph, telephone, electric, water or other services to conform to the new grade and alignment shall be completed by the Utilities in question, or the City of Tiffin.



## RESETTING CASTINGS

STATION	DISTANCE RT. or LT.	DESCRIPTION	WORK REQUIRED	STATION	DISTANCE RT. or LT.	DESCRIPTION	WORK REQUIRED
81+68	9' Lt.	Water Valve	By Others	148+18	19' Lt.	Water M.H.	By Others
84+51.57	±	Monument Box	I-8, Reset	148+29	14' Lt.	Water M.H.	By Others
86+11.45	±	Monument Box	I-8, Reset	148+50	±	Storm M.H.	I-8, Reset
89+11	9' Lt.	Water Valve	By Others	148+59	16' Lt.	Bell M.H.	By Others
89+31	±	Storm M.H.	I-8, Reset	148+81.45	±	Monument Box	I-8, Reset
96+16	±	Storm M.H.	I-8, Reset	150+56	17' Lt.	Water Valve	By Others
97+04	15' Lt.	Water Valve	By Others	150+63	18' Lt.	Bell M.H.	By Others
97+10.05	±	Monument Box	I-8, Reset	150+71.60	±	Monument Box	I-8, Reset
97+20	19' Lt.	Storm M.H.	I-8, Reset	151+19	9' Lt.	Storm M.H.	I-8, Reset
101+66	±	Storm M.H.	I-8, Reset	151+65	18' Lt.	Water Valve	By Others
101+87	13' Lt.	Water Valve	By Others	152+60	13.5' Rt.	Water M.H.	By Others
105+65	±	Storm M.H.	I-8, Reset	152+63	16.5' Lt.	Bell M.H.	By Others
105+72	14' Lt.	Water M.H.	By Others	152+72.5	±	Storm M.H.	I-8, Reset
105+90	13' Lt.	Water Valve	By Others	154+70.20	±	Monument Box	I-8, Reset
108+34	1.5' Lt.	Storm M.H.	I-8, Reset	155+19	19' Lt.	Water M.H.	By Others
108+71	1' Lt.	Storm M.H.	I-8, Reset	155+53	15' Lt.	Water M.H.	By Others
110+98	±	Storm M.H.	I-8, Reset	156+69.15	±	Monument Box	I-8, Reset
111+05	32' Lt.	Water Valve	By Others	157+63	±	Sewer M.H.	I-8, Reset
112+59	1' Rt.	Storm M.H.	I-8, Reset	158+58	16' Lt.	Bell M.H.	By Others
113+03	1' Rt.	Storm M.H.	I-8, Reset	158+68.13	±	Monument Box	I-8, Reset
114+81	12' Lt.	Water Valve	By Others	159+79	8' Lt.	Water Tap	By Others
115+19	±	Storm M.H.	I-8, Reset	161+96	23.5' Lt.	Water Tap	By Others
115+67	36' Lt.	Water Valve	By Others	162+40	11' Lt.	Water M.H.	By Others
115+67	7' Rt.	Water Valve	By Others	162+59	18' Rt.	Water M.H.	By Others
117+77	16' Lt.	Storm M.H.	I-8, Reset	162+99.10	±	Monument Box	I-8, Reset
120+36	13' Lt.	Storm M.H.	I-8, Reset	162+67	16' Lt.	Bell M.H.	By Others
120+55	20' Rt.	Water Tap	By Others	162+83.5	±	Storm M.H.	I-8, Reset
122+12	10' Rt.	Water Valve	By Others	164+98	13' Rt.	Water Valve	By Others
126+10	15' Rt.	Water Valve	By Others	168+88	14' Rt.	Water Valve	By Others
131+95.00	±	Monument Box	I-8, Reset	171+02	21' Lt.	Water Valve	By Others
132+06	17.5' Rt.	Water Valve	By Others	171+17	2' Lt.	Storm M.H.	I-8, Reset
132+09	20' Rt.	Water Tap	By Others	173+63.5	15' Rt.	Water Valve	By Others
135+83	8' Lt.	Storm M.H.	I-8, Reset	175+66	±	Storm M.H.	I-8, Reset
136+55	22' Lt.	Water Tap	By Others	178+42	±	Storm M.H.	I-8, Reset
138+38	12' Lt.	Water M.H.	By Others	183+42	12.5' Rt.	Water Valve	By Others
139+25	13' Lt.	Water Valve	By Others	183+47	10' Rt.	Water M.H.	By Others
139+56.8	4' Lt.	Storm M.H.	I-8, Reset	183+52	±	Storm M.H.	I-8, Reset
139+56.8	±	Monument Box	I-8, Reset	188+75	11' Rt.	Water Valve	By Others
139+91	11' Lt.	Water Valve	By Others	204+50	14' Rt.	Water Valve	By Others
141+27	11' Lt.	Water M.H.	By Others	207+11	20' Lt.	Water Tap	By Others
141+70	14' Lt.	Water M.H.	By Others	207+11	13' Rt.	Water M.H.	By Others
141+82	22' Lt.	Water Tap	By Others				
142+77	3' Lt.	M.H.	I-8, Reset				
143+69	14' Lt.	Water Valve	By Others				
144+06	3' Lt.	Storm M.H.	I-8, Reset				
146+12	15' Lt.	Water Valve	By Others				
146+17	17' Lt.	Bell M.H.	By Others				

TOTALS - ITEM I-8  
Resetting Manhole Castings  
(To General Summary) 26 Each  
Resetting Monument Boxes  
(To General Summary) 11 Each

