

STATE OF OHIO
DEPARTMENT OF HIGHWAYS AND PUBLIC WORKS
DIVISION OF HIGHWAYS
BUREAU OF CONSTRUCTION

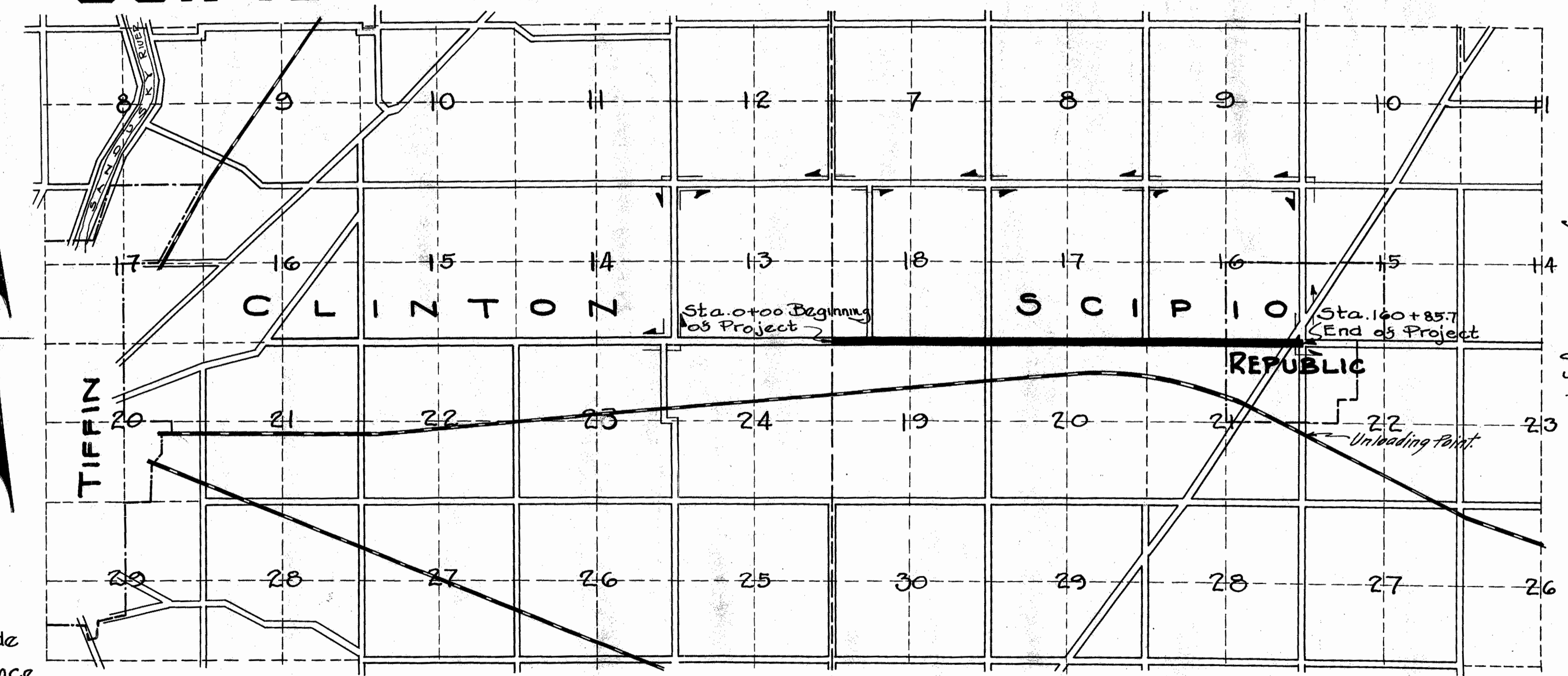
TIFFIN-REPUBLIC ROAD
I.C.H. NO. 449 SEC. L PET. NO. 4803
SENECA COUNTY
SCIPIO TOWNSHIP MARCH 1924

• CONVENTIONAL SIGNS •

- State line _____
- County line _____
- Township line _____
- Section line _____
- Property line not Senced _____
- Center line _____
- City or Village line _____
- Fence -x-x-x-
- Telephone or Telegraph > > > >
- Steam Railroad _____
- Electric line _____
- Hedge Fence _____
- Guard Rail _____

• INDEX •

- Title Page p. 1
- Typical Section p. 2
- Plans & Profile. p. 3 to 9
- Cross Sections p. 10 to 19
- Drainage Structures p. 20 to 21
- Summary Sheet p. 22.



The Standard Specifications of the State of Ohio Division of Highways in force on date of Contract will govern this improvement.

I hereby approve these plans and declare that the making of this improvement will require the closing to traffic of the highway and that detours will be provided as shown on the plan and estimates.

Approved: A. J. Baker
Date, July 15, 1924 Resident Engineer

Approved: M. L. Hadden
Date, 8/3/24 Division Engineer

Approved: J. F. Schlessinger
Date, 11/13/24 State Highway Engineer

Approved: L. A. Bouley
Date, 11/13/24 Director of Highways and Public Works

We the Commissioners of Seneca County hereby approve these plans and certify that the right-of-way 60 feet wide is available for the construction, maintenance and repair of the above highway

E. W. Dubrow
C. L. Park
W. A. Jordan

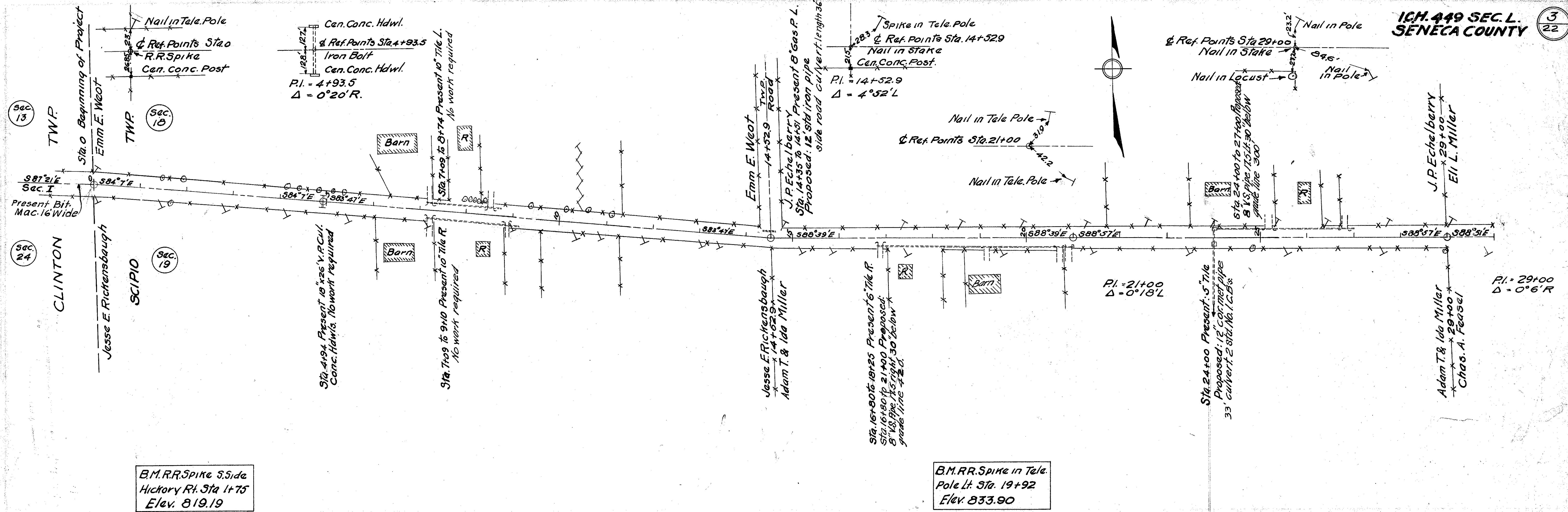
Date, 7/15/24 County Commissioners

LOCATION PLAN
SCALE OF MILES
0 1/4 1/2 1 2

• SCALES •
Plan 1" = 100'
Profile (Vertical) 1" = 10'
Profile (Horizontal) 1" = 100'
Cross Sections 1" = 5'

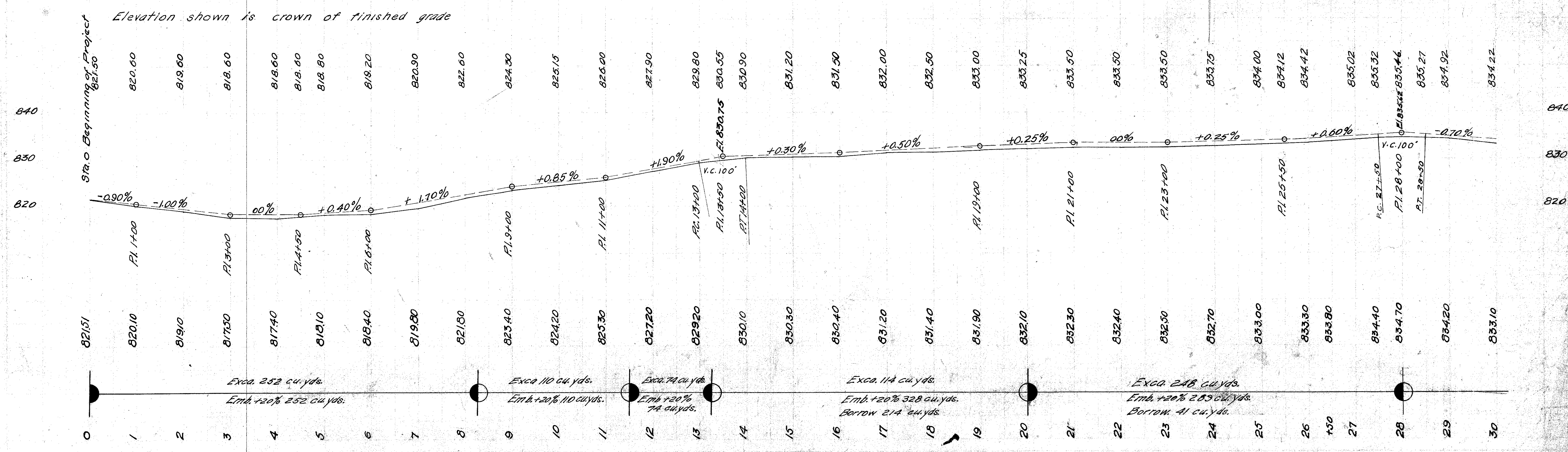


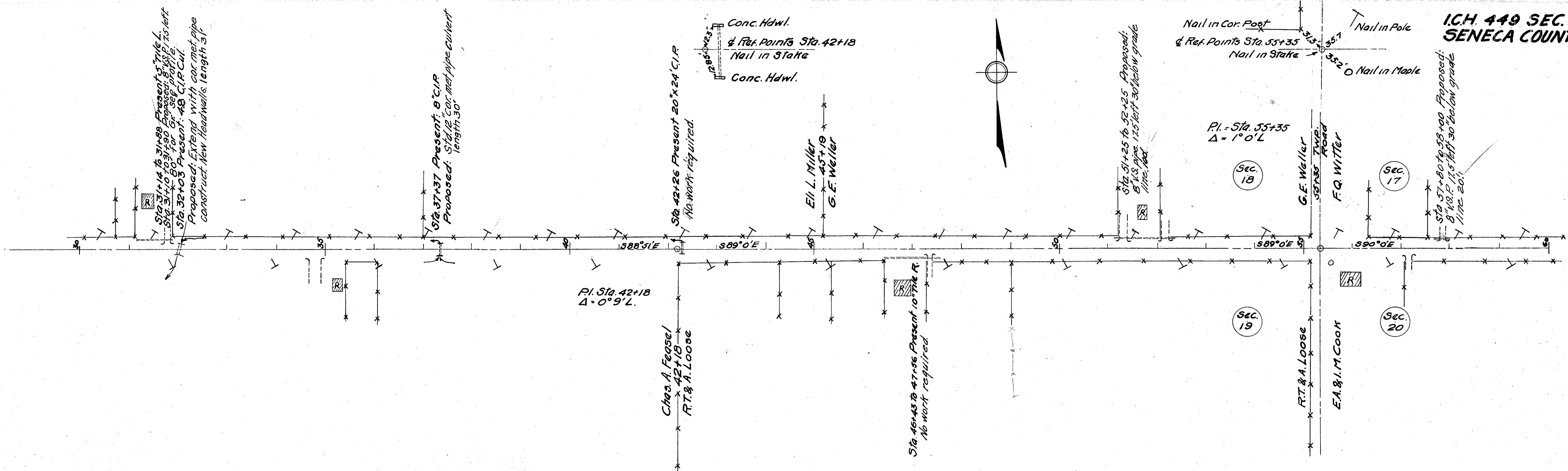
FOR ANY QUESTIONS PLEASE CONTACT ODOT DISTRICT 2 REAL ESTATE AT 419-353-8131



B.M. R.R. Spike S. Side
Hickory Rt. Sta. 1+75
Elev. 819.19

B.M. R.R. Spike in Tele.
Pole Lt. Sta. 19+92
Elev. 833.90

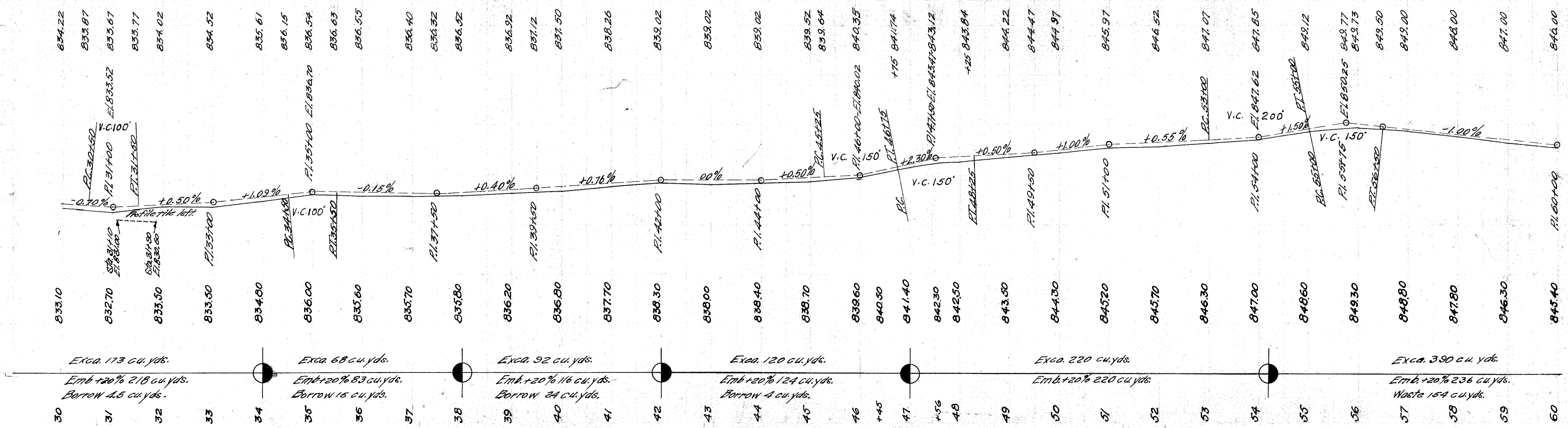




B.M. RR. Spike in Tel. Pole Lt. Sta. 31+48 Elev. 833.72

B.M. RR. Spike in Tel. Pole L. Sta. 55+61 Elev. 850.24

Elevation shown is crown of finished grade



Exca. 173 cu. yds.
Emb. +20% 218 cu. yds.
Borrow 4.5 cu. yds.

Exca. 68 cu. yds.
Emb. +20% 83 cu. yds.
Borrow 15 cu. yds.

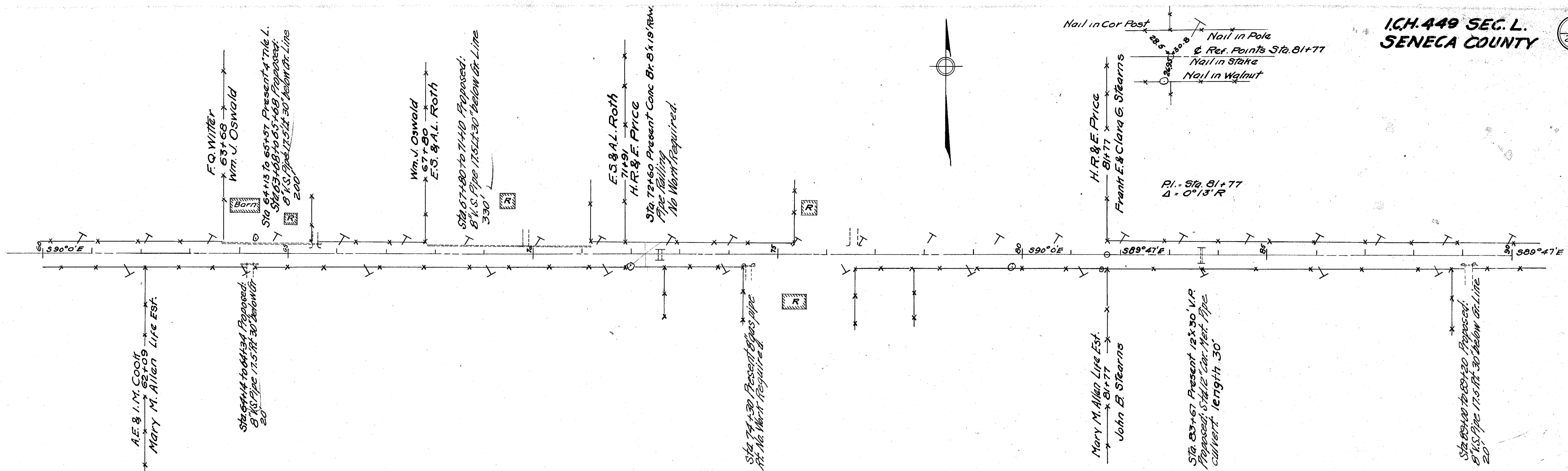
Exca. 92 cu. yds.
Emb. +20% 116 cu. yds.
Borrow 24 cu. yds.

Exca. 120 cu. yds.
Emb. +20% 124 cu. yds.
Borrow 4 cu. yds.

Exca. 220 cu. yds.
Emb. +20% 220 cu. yds.

Exca. 390 cu. yds.
Emb. +20% 236 cu. yds.
Waste 154 cu. yds.

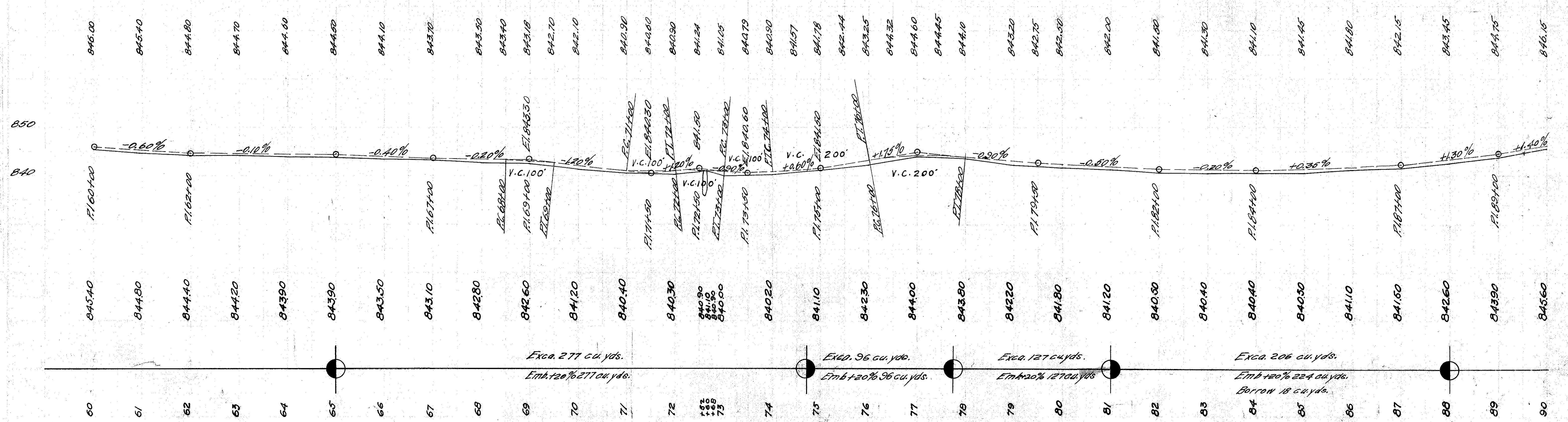
FOR ANY QUESTIONS PLEASE CONTACT ODOT DISTRICT 2 REAL ESTATE AT 419-363-8131



B.M. RR. SPIKE IN TELA.
Pole L. Sta. 68+66
Elev. 843.09

B.M. RR. SPIKE IN TELA.
Pole L. Sta. 84+69
Elev. 841.07

Elevation shown is crown of finished grade



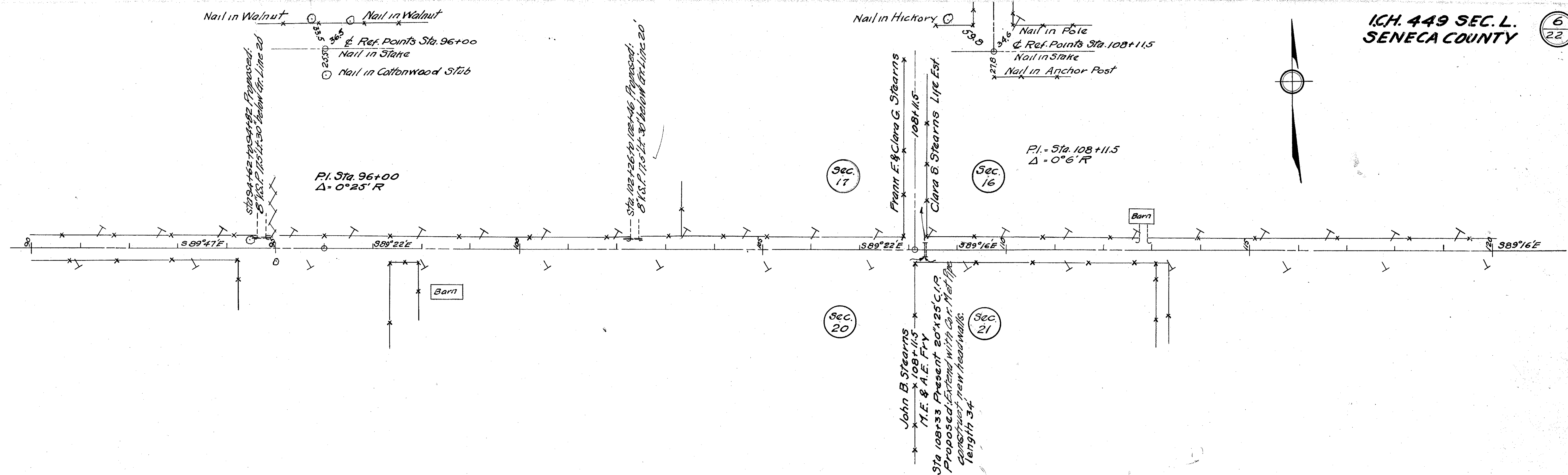
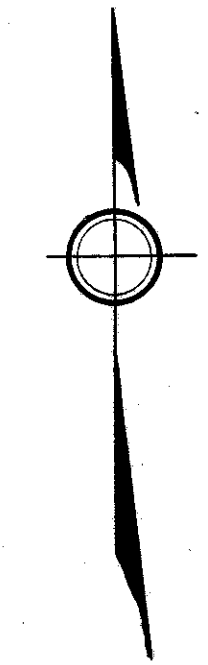
Exca. 277 cu. yds.
Emb +20% 277 cu. yds.

Exca. 96 cu. yds.
Emb +20% 96 cu. yds.

Exca. 127 cu. yds.
Emb +20% 127 cu. yds.

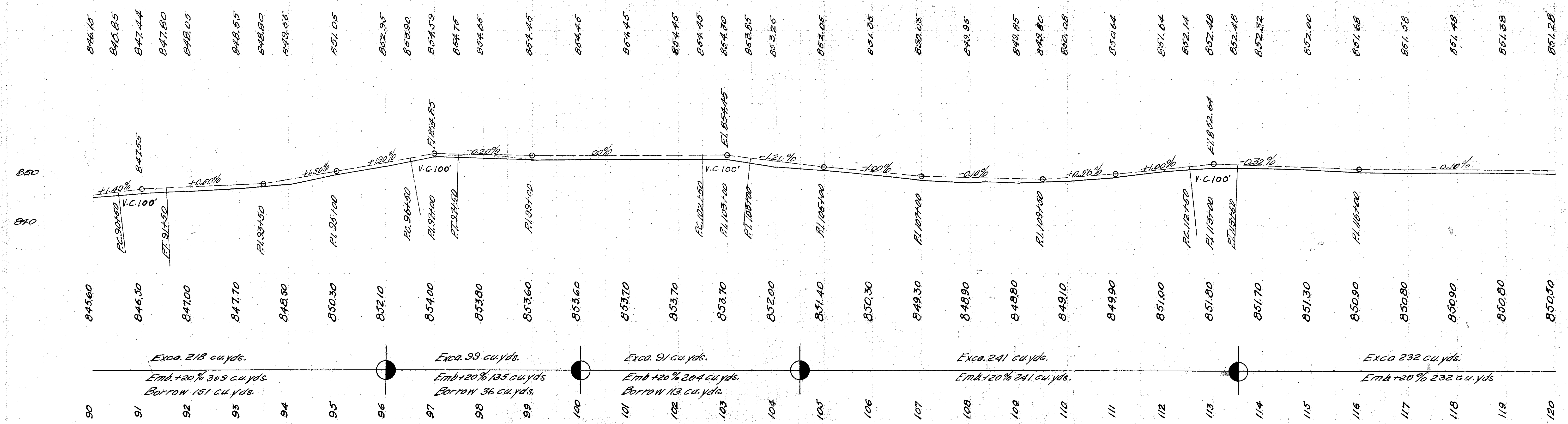
Exca. 206 cu. yds.
Emb +20% 224 cu. yds.
Borrow 18 cu. yds.

FOR ANY QUESTIONS PLEASE CONTACT ODOT DISTRICT 2 REAL ESTATE AT 419-363-8131



B.M. R.R. Spike in Hickory L Sta. 107+68 Elev. 849.78

Elevation shown is crown of finished grade



Exca. 218 cu. yds.
Emb +20% 369 cu. yds.
Borrow 151 cu. yds.

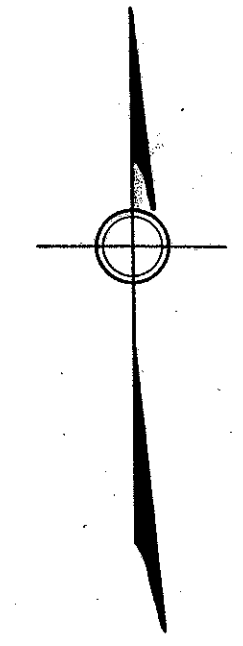
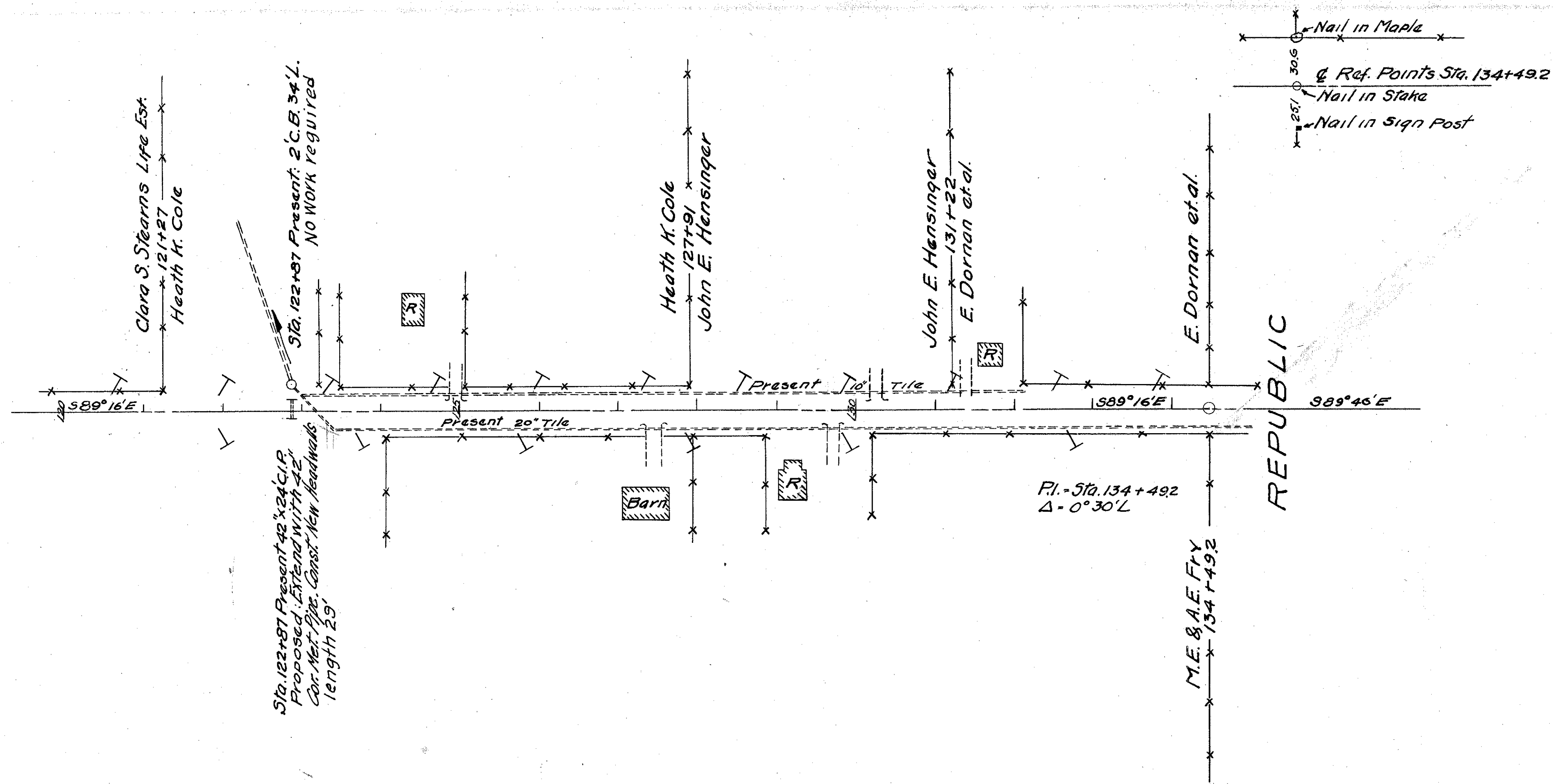
Exca. 99 cu. yds.
Emb +20% 135 cu. yds.
Borrow 36 cu. yds.

Exca. 91 cu. yds.
Emb +20% 204 cu. yds.
Borrow 113 cu. yds.

Exca. 241 cu. yds.
Emb +20% 241 cu. yds.

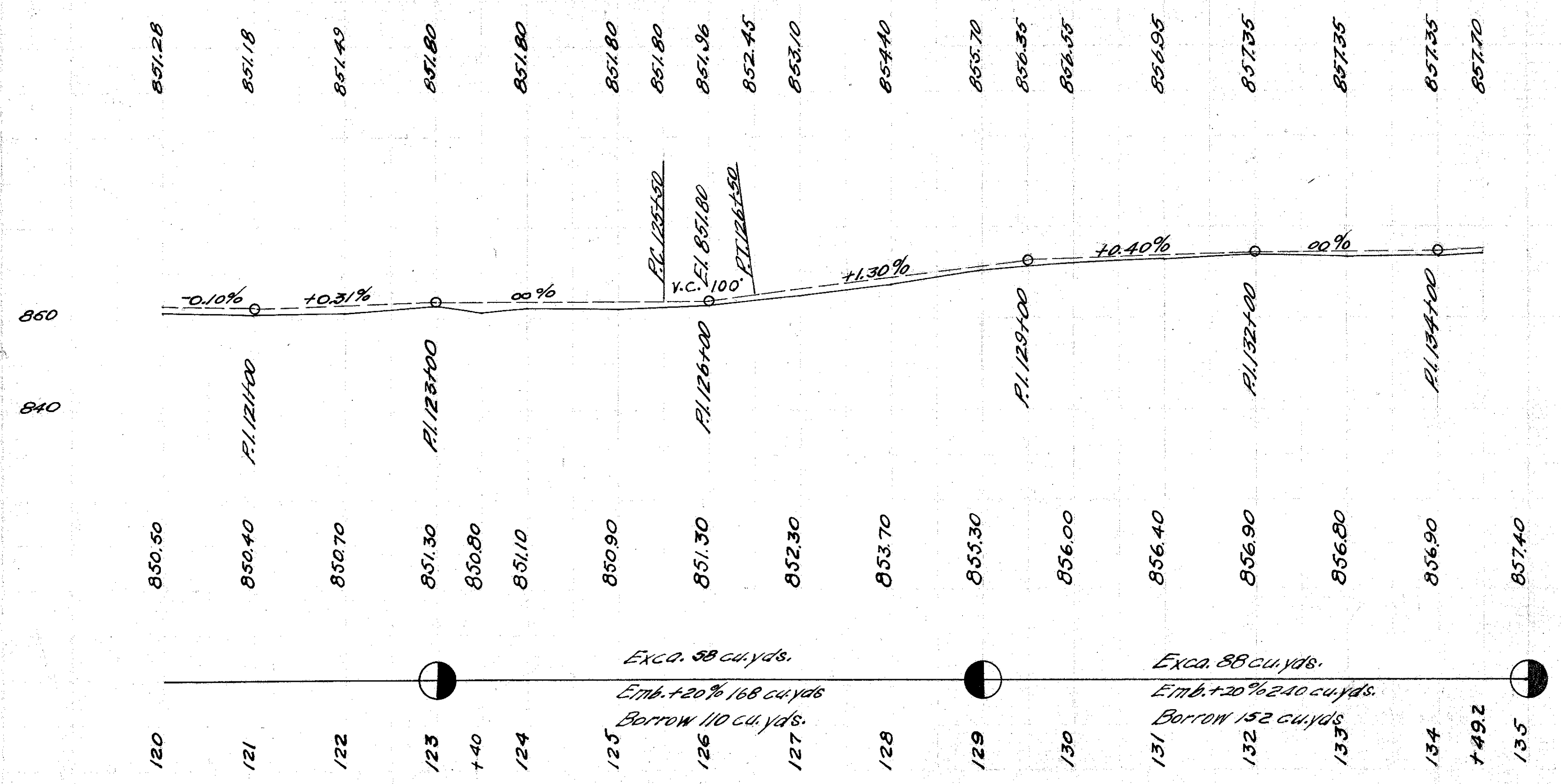
Exca. 232 cu. yds.
Emb +20% 232 cu. yds.

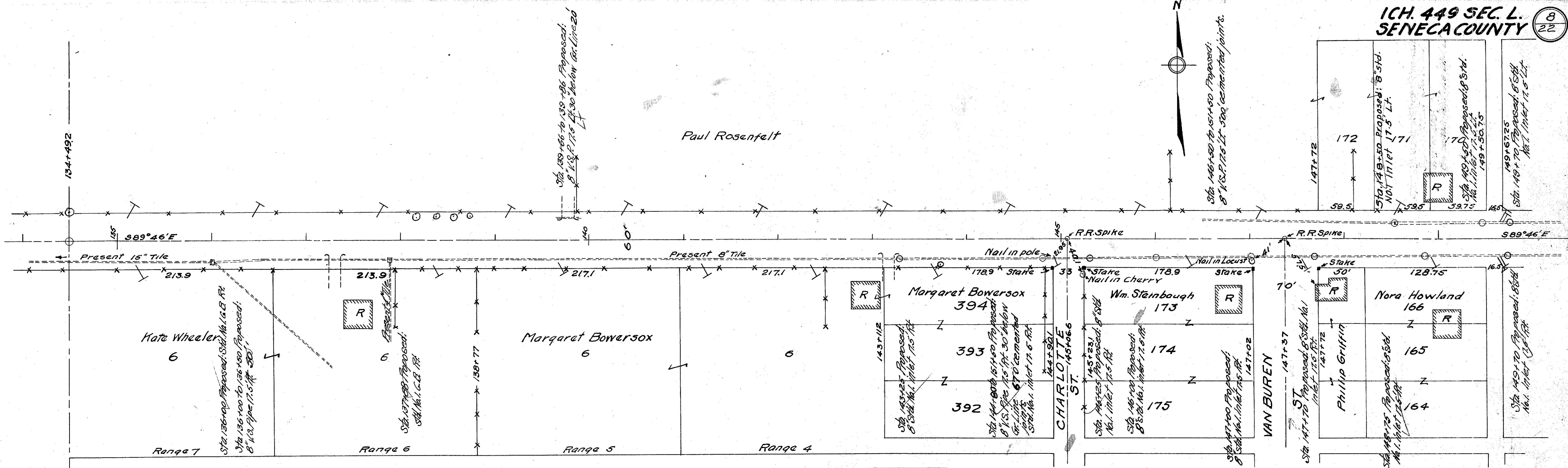
FOR ANY QUESTIONS PLEASE CONTACT ODOT DISTRICT 2 REAL ESTATE AT 419-353-8131



B.M. R.R. SPIKE in
Maple L. Sta. 124+00
Elev. 851.31

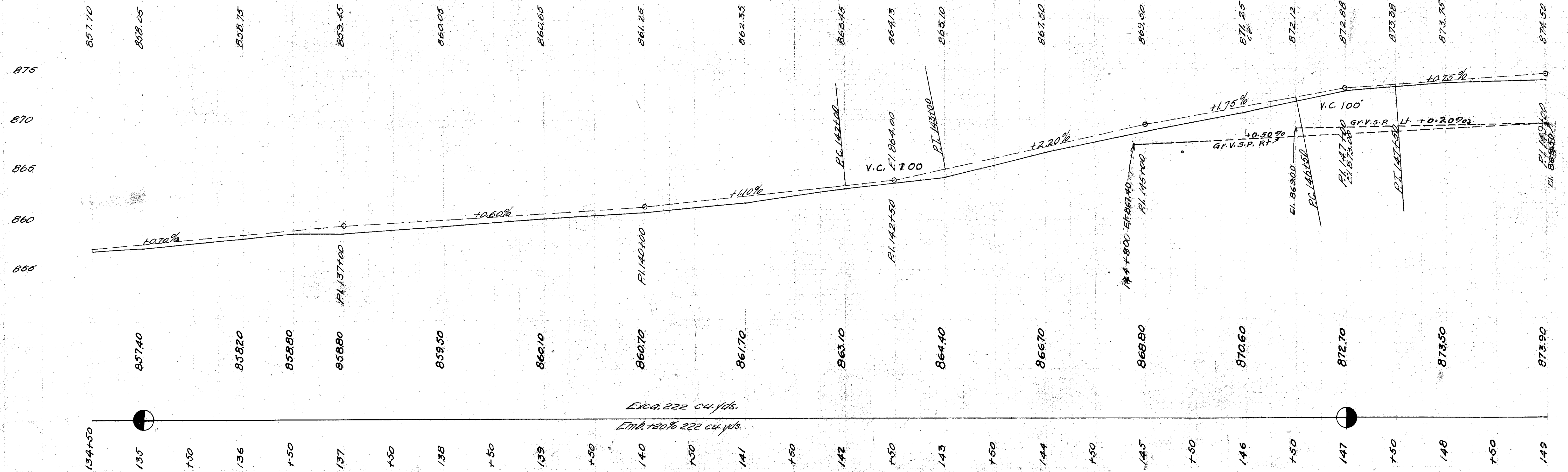
Elevation shown is crown of finished grade





B.M. R.R. Spike in
Maple R. Sta. 143+71
Elev. 867.97

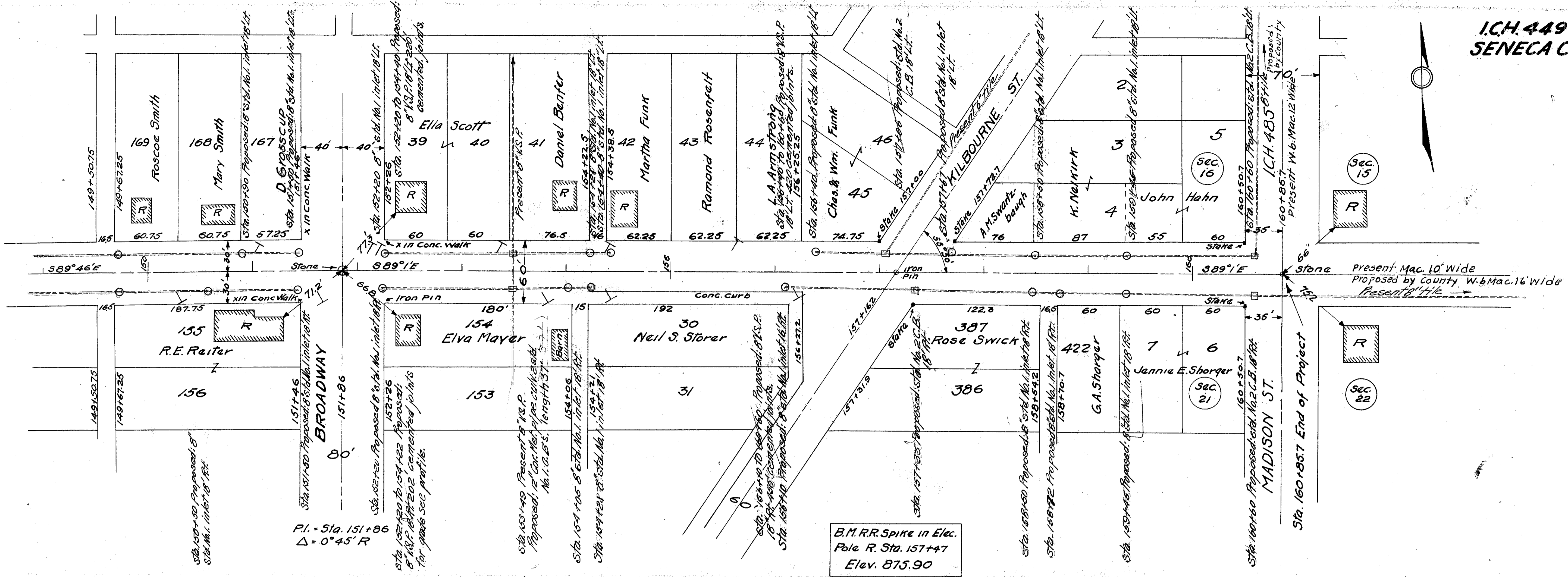
Elevation shown is crown of finished grade



EXCA. 222 cu. yds.
Emb. 200 cu. yds.

Scale 1" = 50' Hor.
1" = 5' Vert.

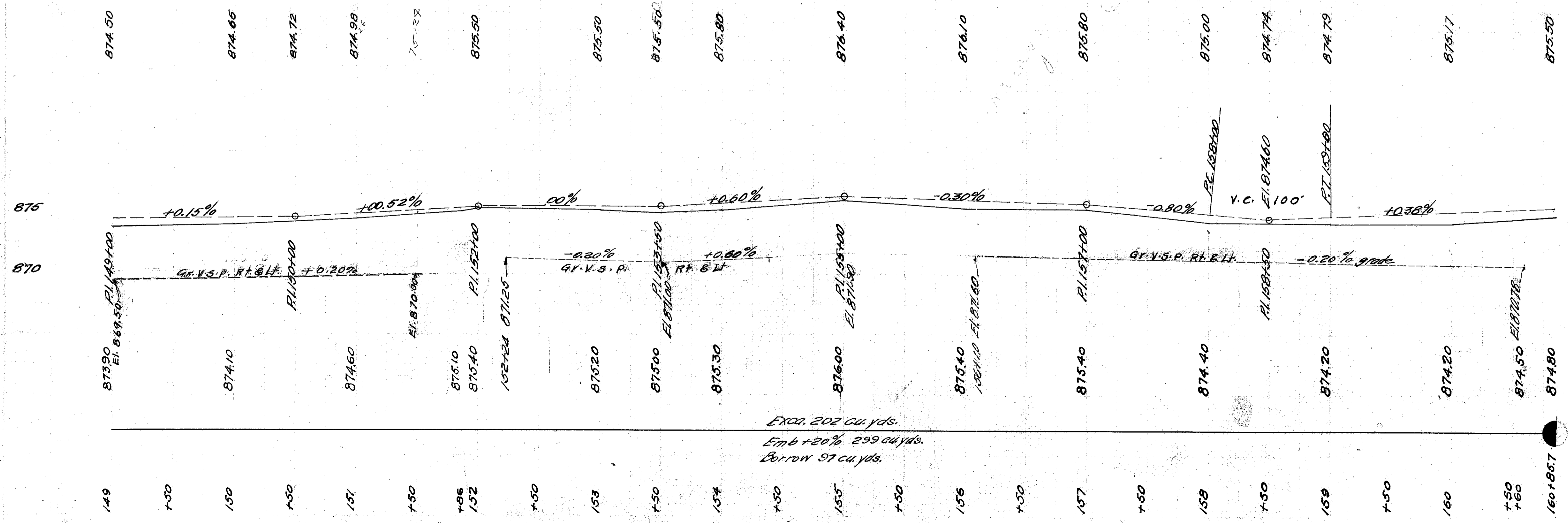
FOR ANY QUESTIONS PLEASE CONTACT ODOT DISTRICT 2 REAL ESTATE AT 419-353-8131



Pl. = Sta. 151+86
Δ = 0°45' R

B.M. R.R. Spike in Elec.
Pole R. Sta. 157+47
Elev. 875.90

Elevation shown is crown of finished grade



EXCA. 202 cu. yds.
Emb +20% 299 cu. yds.
Borrow 97 cu. yds.

Scale 1" = 50' Hor.
1" = 5' Vert.

Sta. 160+85.7 End of Project