

2201 Pm  
 SC-1000  
 July 1947

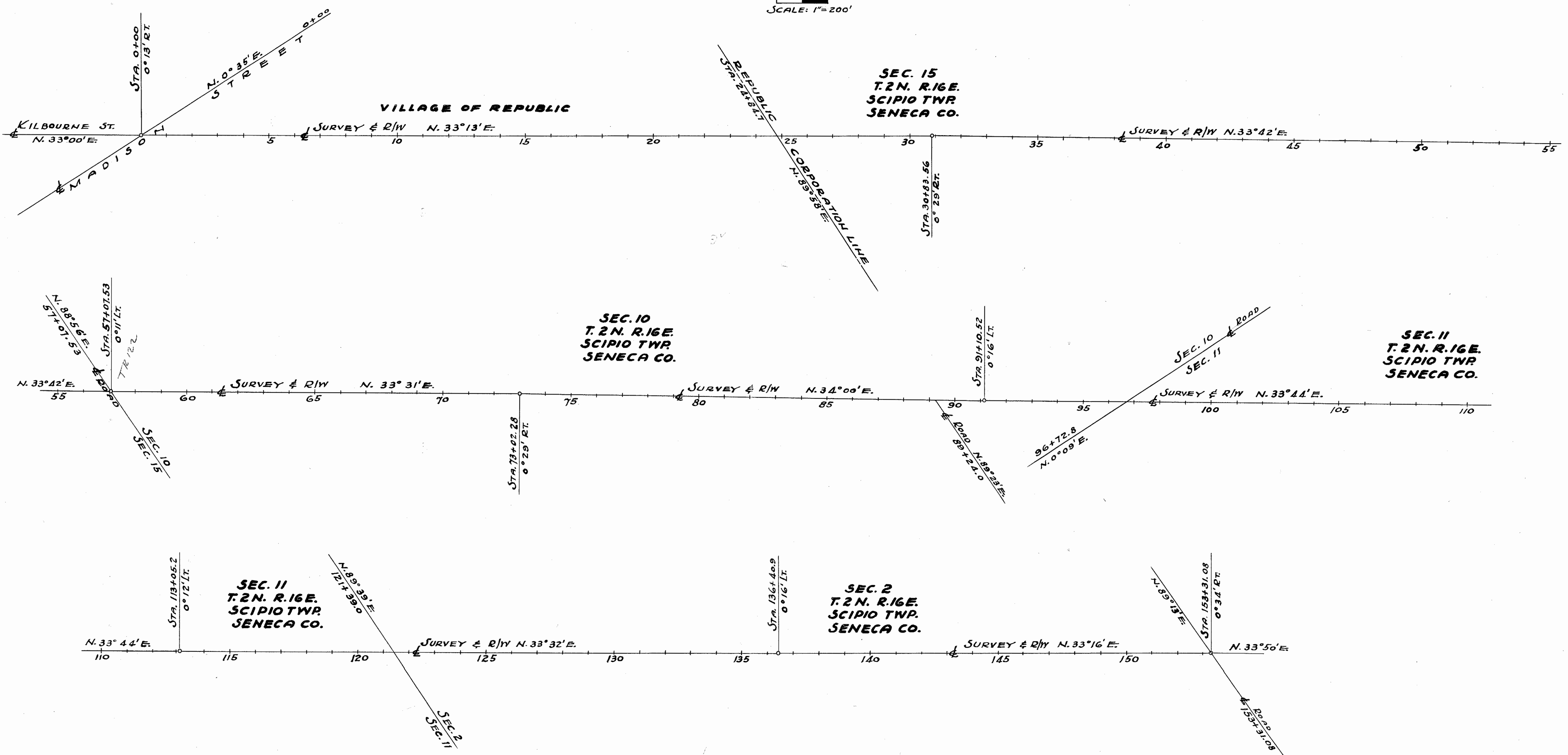
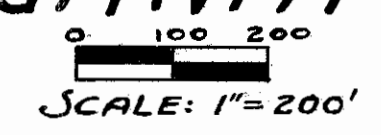
# LOCATION PLAN

## S.H. 267 SEC. REPUBLIC (PT.), Y, & H (PT.)

### UPPER SANDUSKY - BELLEVUE ROAD

#### 1944

DEPARTMENT OF HIGHWAYS - STATE OF OHIO



- CENTER LINE REFERENCE MONUMENTS WILL BE SET BEFORE OR AFTER CONSTRUCTION -

Sta. 4+50	Sta. 11+50	Sta. 18+50	Sta. 28+00	Sta. 37+50	Sta. 47+00	Sta. 56+50	Sta. 65+00	Sta. 73+50	Sta. 80+50	Sta. 86+50	Sta. 94+00	Sta. 103+00	Sta. 110+00	Sta. 118+00	Sta. 127+00	Sta. 135+00	Sta. 143+00	Sta. 151+50

R6018  
 #4  
 G-11

Scanned  
July 1997

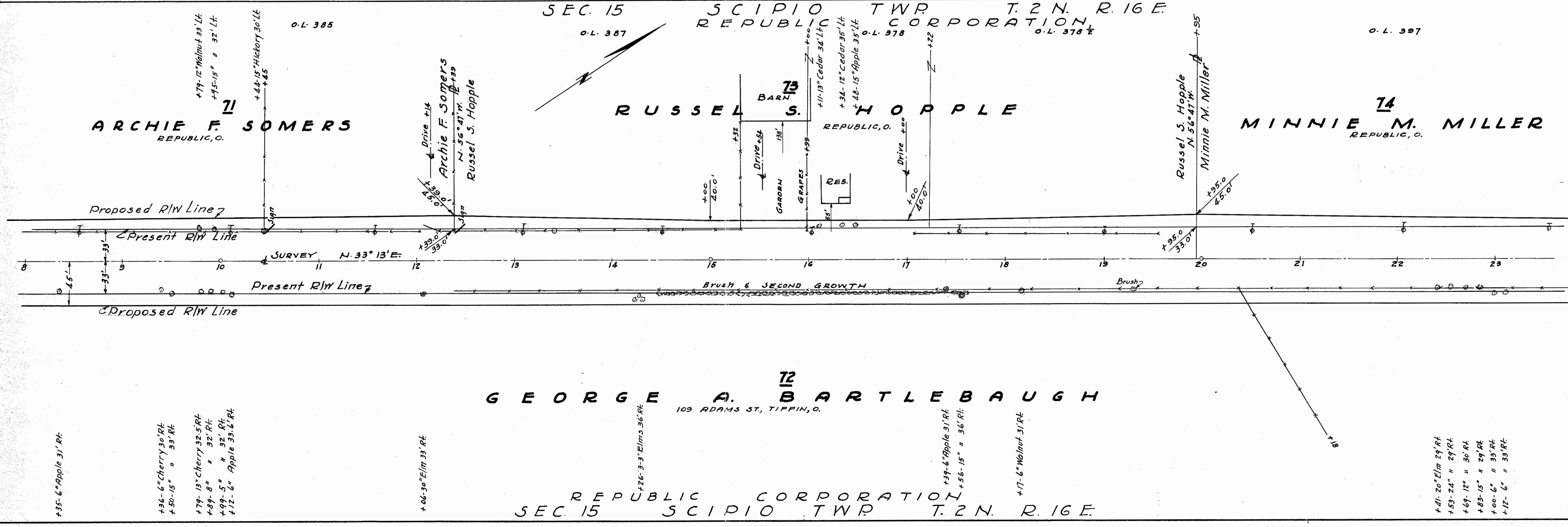
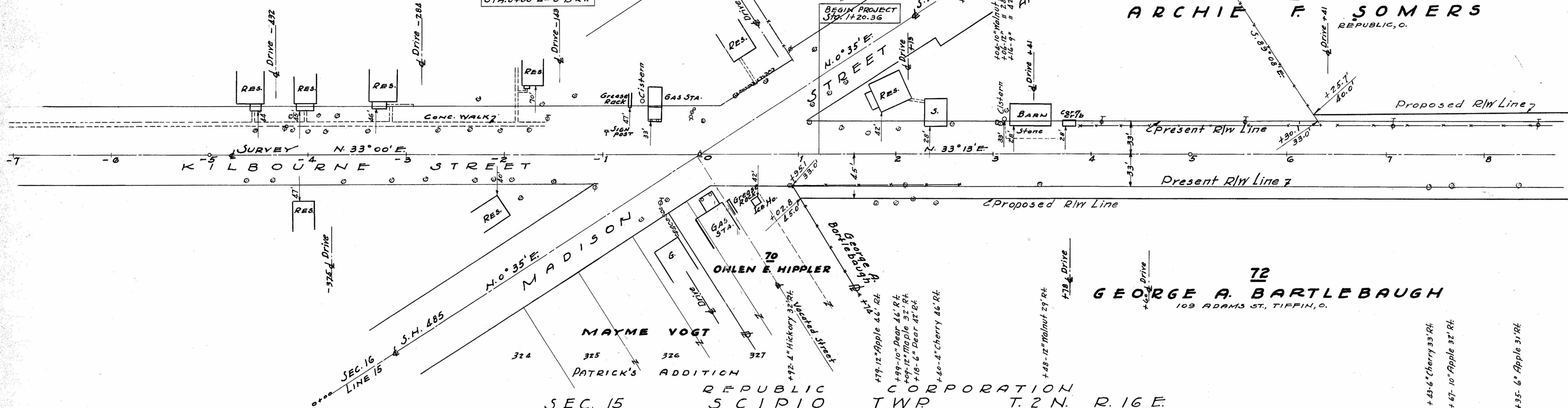
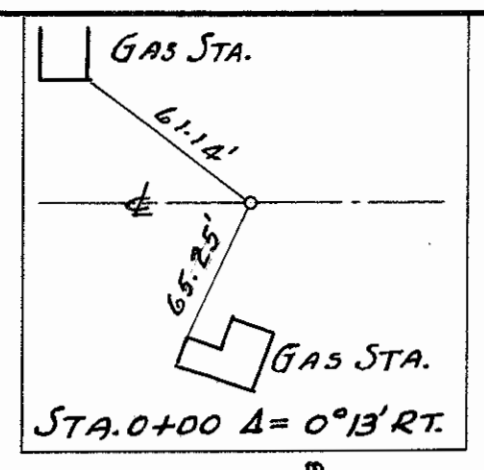
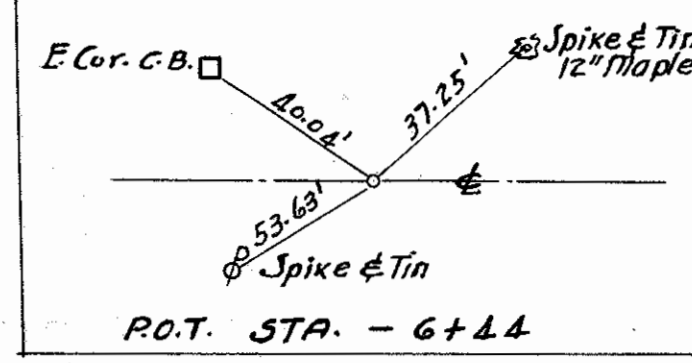
**SENECA COUNTY**  
**S.H. 267-SEC. REPUBLIC (PART) 1**  
**R/W PLANS & MAP**

DATE: 4/24/44 DRAWN BY J.S.  
 REVISED 11-10-44  
 LENGTH OF PROJECT 2.891 Miles

SEC. 16  
REPUBLIC

SCIPPIO TWP  
CORPORATION T. 2 N. R. 16 E.

SEC. 15



+35-6" Apple 31' Rt.

+36-6" Cherry 30' Rt.  
+50-15" " 33' Rt.  
+79-13" Cherry 32.5' Rt.  
+89-8" " 32' Rt.  
+99-5" " 32' Rt.  
+12-6" Apple 33.6' Rt.

+06-30" Elm 33' Rt.

+26-3-3" Elms 36' Rt.

+39-6" Apple 31' Rt.  
+56-15" " 36' Rt.

+17-6" Walnut 31' Rt.

+41-20" Elm 29' Rt.  
+53-24" " 29' Rt.  
+69-12" " 30' Rt.  
+83-15" " 29' Rt.  
+00-6" " 33' Rt.  
+12-6" " 33' Rt.

**72**  
**GEORGE A. BARTLEBAUGH**  
 109 ADAMS ST., TIFFIN, O.  
 REPUBLIC CORPORATION  
 SEC. 15 SCIPPIO TWP T. 2 N. R. 16 E.





Revised  
July 1907

SEC. 15

SCIPPIO TWP T. 2 N. R. 16 E.

SEC. 10

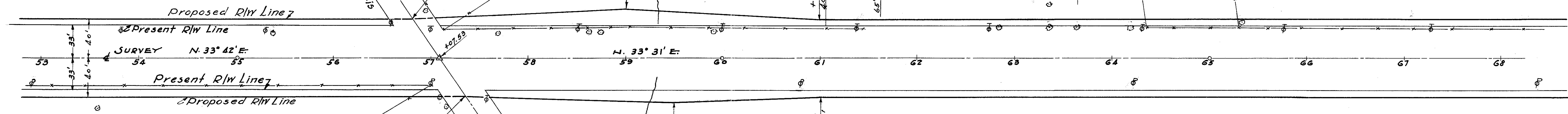
**SENECA COUNTY**  
**S. H. 267-SEC. REPUBLIC (PT.) & Y**  
**R/W PLANS & H (PT.)**

DATE: 4/24/14 DRAWN BY J.S.  
 REVISED  
 LENGTH OF PROJECT 2.891 Miles

3  
6

GRACE STICE & MAY PARTIS

GROVER C. NEIKIRK



GRACE STICE & MAY PARTIS

GROVER C. NEIKIRK

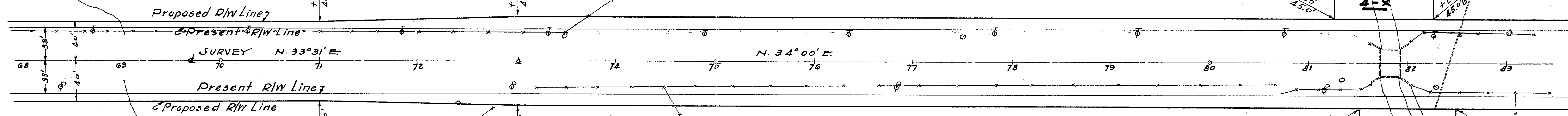
+58-14\"/>

SEC. 15

SCIPPIO TWP T. 2 N. R. 16 E. SEC. 10  
SEC. 10 SCIPPIO TWP T. 2 N. R. 16 E.

GROVER C. NEIKIRK

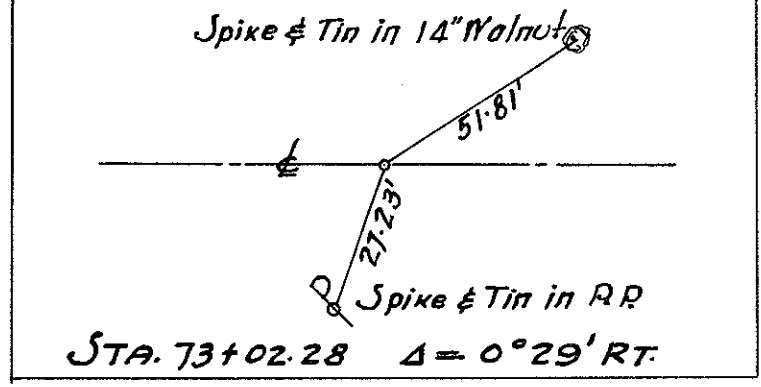
GROVER C. NEIKIRK



GROVER C. NEIKIRK

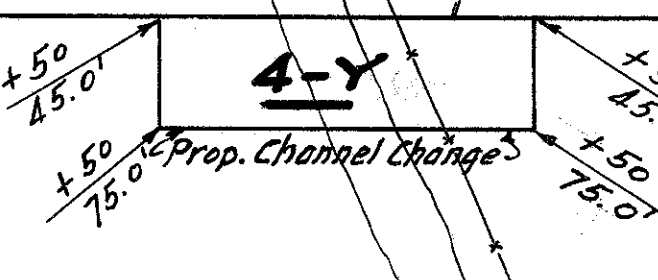
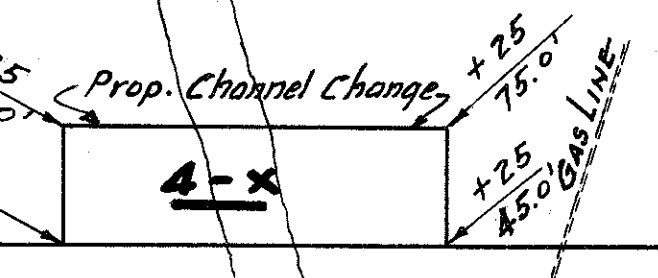
GROVER C. NEIKIRK

SEC. 10 SCIPPIO TWP T. 2 N. R. 16 E.



STA. 73+02.28 Δ = 0° 29' RT.

+39-9\"/>



+32-15\"/>

+29-6\"/>



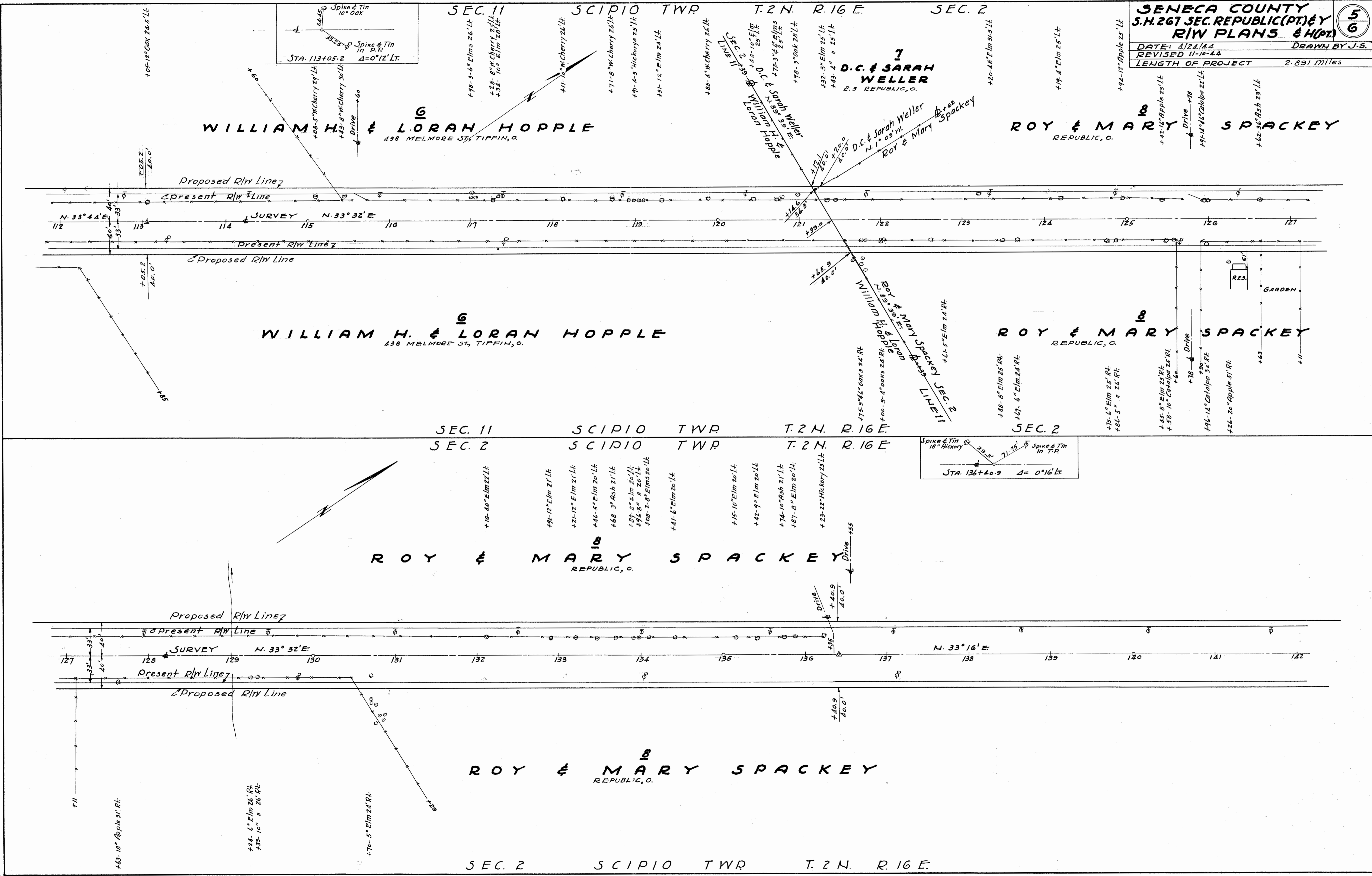


**SENECA COUNTY**  
**S.H. 267 SEC. REPUBLIC (PT.) & Y**  
**R/W PLANS & H(PT.)**

DATE: 1/21/11  
 REVISED 11-10-11  
 LENGTH OF PROJECT 2.891 Miles

DRAWN BY J.S.

5  
6



**WILLIAM H. & LORAN HOPPLE**  
 438 MELMORE ST, TIFFIN, O.

**WILLIAM H. & LORAN HOPPLE**  
 438 MELMORE ST, TIFFIN, O.

**ROY & MARY SPACKY**  
 REPUBLIC, O.

**ROY & MARY SPACKY**  
 REPUBLIC, O.

**ROY & MARY SPACKY**  
 REPUBLIC, O.

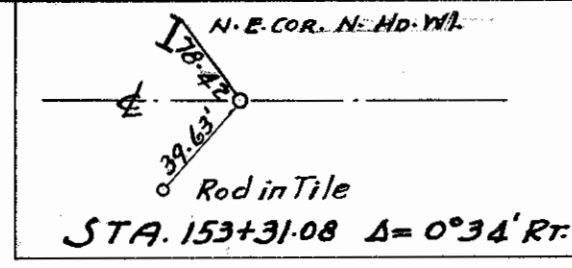
**ROY & MARY SPACKY**  
 REPUBLIC, O.

SEC. 2 SCIPPIO TWP T. 2 N. R. 16 E.

Secured July 1997



SEC. 2 SCIPIO TWP T. 2 N. R. 16 E.



**SENECA COUNTY**  
**S.H. 267 SEC. REPUBLIC (PT) & Y**  
**R/W PLANS & H(PT)**

DATE: 4/24/44 DRAWN BY J.S.  
 REVISED 11-10-44  
 LENGTH OF PROJECT 2.891 Miles

**ROY & MARY SPACKEY**  
REPUBLIC, O.

**CORA M. COLE**  
REPUBLIC, O.

**LESTER J. HEIKIRK**

**CORA M. COLE**  
REPUBLIC, O.

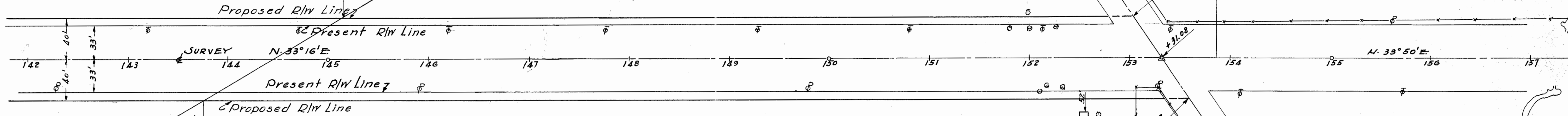
**LESTER J. HEIKIRK**

Roy & Mary Spackey  
Cora M. Cole

Drive  
+05'  
+26-18" Hickory 60' Rt

Drive  
+00'  
+09-2" Plum 33' Rt  
+16-4" " 27' Rt  
+32-1" Lilac 28' Rt  
+66-18" Evergreen 55' Rt

GARDEN  
+05'  
+58.7'  
20.0'



SEC. 2 SCIPIO TWP T. 2 N. R. 16 E.

Checked July 1947

24" x 36" Scale (1/4" = 100')