

FOR ANY QUESTIONS PLEASE CONTACT ODOT DISTRICT 2 REAL ESTATE AT 419-353-8131

P.I. Sta. 0+00
 Iron Pin
 L=0°-34' Rt.
 39.63' I.P. in Tile

0+55 2-9" Stumps 21 Lt
 0+82 7" Stump 21 Lt
 1+08 21" Stump 21 Lt
 3+01 3" Elm 22 Lt
 3+19 10" Elm 22 Lt
 3+69 6" Elm 22 Lt
 3+79 6" Elm 23 Lt

4+70 10" Stump 19 Lt
 4+71 6" Cherry 20 Lt
 4+87 9" Stump 20 Lt

6+19 3-3" Wild Cherry 22 Lt
 6+99 2-3" Wild Cherries 21 Lt
 8+00 4-9" Wild Cherries 20 Lt
 8+24 7-9" Wild Cherries 20 Lt

11+08 30" Cherry 20 Lt
 11+85 36" Cherry 22 Lt

LESTER J. NEIKIRK

STELLA M. NEIKIRK

SALEM CEMETERY

LESTER J. NEIKIRK

STELLA M. NEIKIRK

P.I. Sta. 12+05.53
 Iron Pin on E
 L=0°-23' Lt.

Brick Residence
 54.07'
 Stake by Fence Post
 41.45'
 Tacked Stake
 22.22'

SEC 2 T-2N R 16E Scipio Twp.

B.M.#1 - Elev. 846.78
 S.E. Cor. S. Head Wall Culv.
 81' W. of Sta. 0+00

B.M.#2 - Elev. 844.09
 Spike in Power Pole
 22' Left of Sta. 2+26

B.M.#3 - Elev. 843.84
 Spike in Power Pole
 26' Left of Sta. 6+42

4+17 9" Walnut 20 Rt
 4+26 9" Walnut 19 Rt

B.M.#4 - Elev. 844.95
 X on Conc. Wall of Cistern
 12' E. of House Lt. Sta. 12+10

B.M.#5 - Elev. 846.67
 Spike 10" Cedar (Cemetery)
 37' Lt. of Sta. 17+42

B.M.#6 - Elev. 837.92
 Spike in Tel. Pole
 24' W. of Sta. 21+46

P.I. Sta. 42+39
 R.R. Spike on E
 L=0°-25' Rt.

Stake in 4" Tile
 57.82'
 Stake in Tile
 37.15'

Iron Pin in 4" Tile
 40.86'

R.O.T. Sta. 52+06.05
 Iron Pin on E
 L=0° 0'

Iron Pin in 4" Tile
 37.00'

STELLA M. NEIKIRK

BARTHOLOMEW STOUT

DORA ZECHMAN

STELLA M. NEIKIRK

DORA ZECHMAN

B.M.#7 - Elev. 832.43
 Spike in Power Pole
 29' Left of Sta. 28+09

B.M.#8 - Elev. 835.91
 Spike in Tel. Pole
 27' W. of Sta. 32+87

B.M.#9 - Elev. 831.13
 X on Top Wing Wall N.E. Cor.
 Br. 18-266.0 Sta. 37+74.57

31+59 18" Arborvitae 35 Rt
 32+06 24" Tree 43 Rt
 32+26 15" Pear 41 Rt
 32+75 24" Cedar 40 Rt
 33+15 30" Pine 39 Rt
 33+57 30" Pine 37 Rt
 34+12 7" Tree 25 Rt
 34+17 7" Tree 25 Rt
 34+43 18" Cedar 46 Rt
 34+97 7" Locust 25 Rt
 34+99 10" Locust 26 Rt

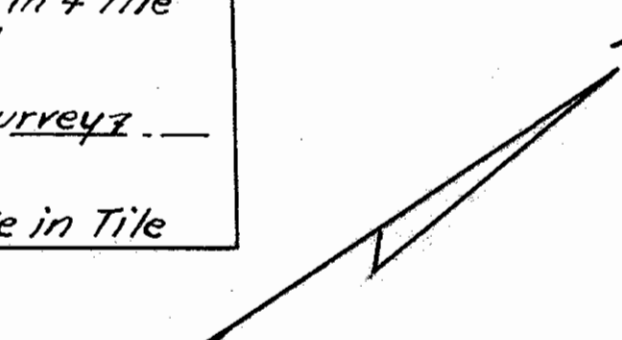
35+00 2-5" Locust 25 Rt
 35+04 7" Locust 30 Rt

35+06 5" Locust 25 Rt
 35+07 5" Locust 21 Rt
 35+09 4" Locust 26 Rt
 35+12 7" Locust 24 Rt
 35+15 7" Locust 19 Rt
 35+21 12" Locust 24 Rt

35+24 12" Locust 34 Rt
 35+25 5" Locust 20 Rt
 35+27 9" Locust 21 Rt
 35+28 7" Locust 19 Rt
 35+30 5" Locust 35 Rt
 35+33 9" Locust 21 Rt
 35+37 9" Locust 24 Rt
 35+42 9" Locust 20 Rt
 35+43 9" Locust 21 Rt
 35+45 9" Locust 21 Rt
 35+50 9" Locust 21 Rt
 35+53 22" Apple 31 Rt
 36+08 12" Locust 32 Rt
 36+23 10" Elm 32 Rt
 38+26 13" Walnut 25 Rt
 38+50 14" Locust 28 Rt
 38+69 20" Locust 18 Rt
 39+17 30" Walnut 34 Rt
 39+25 7" Maple 25 Rt

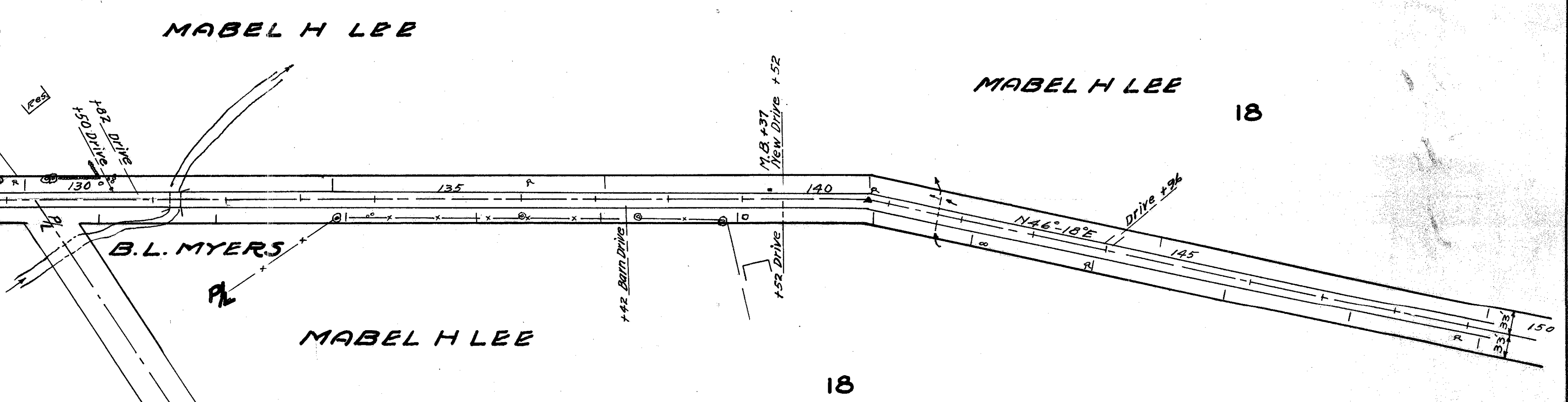
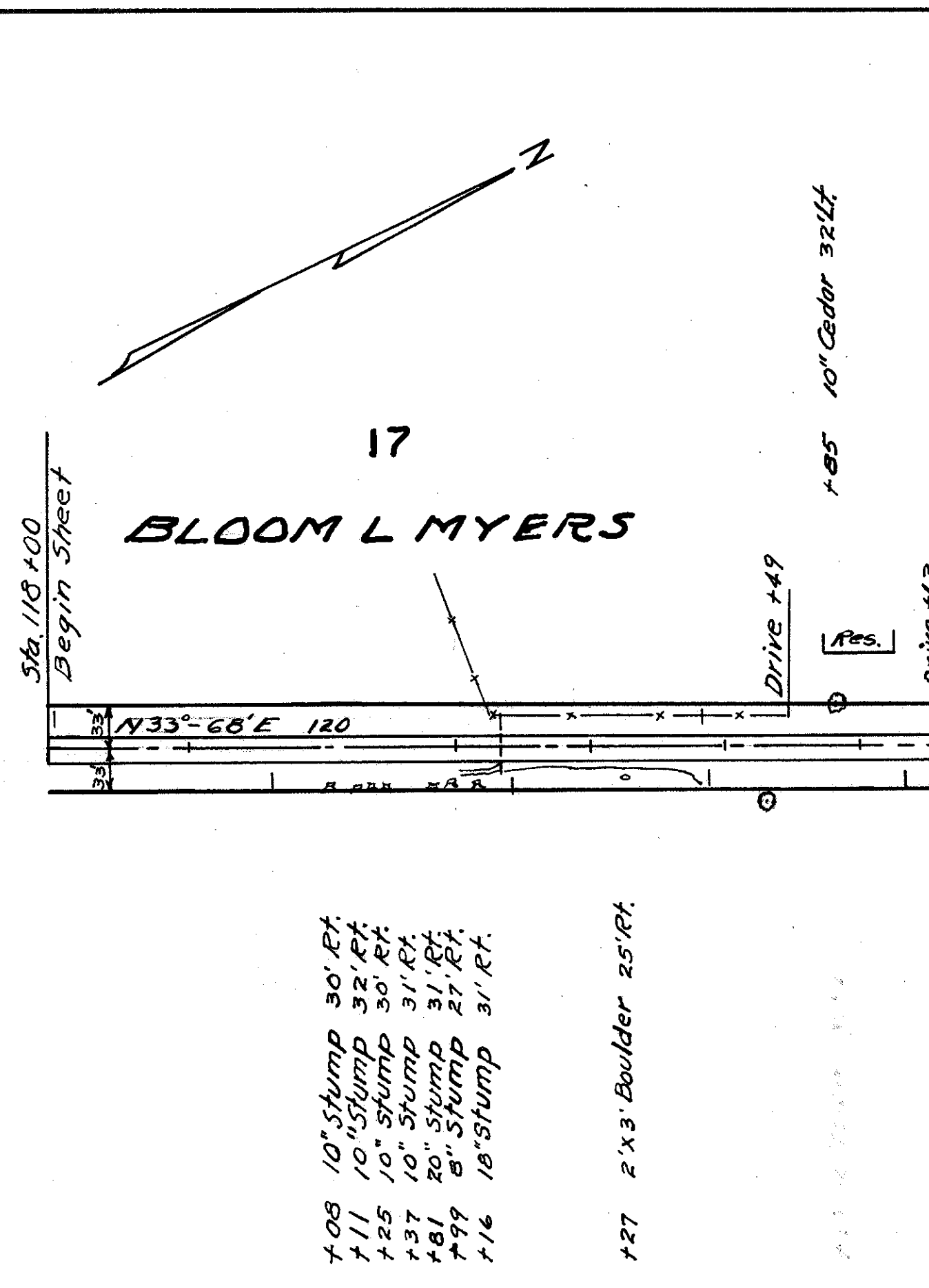
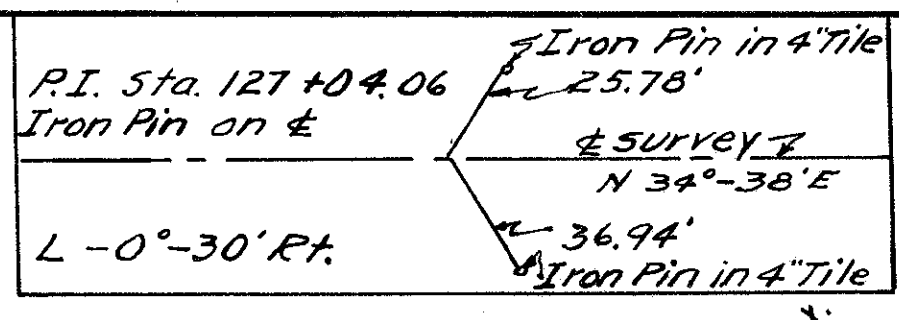
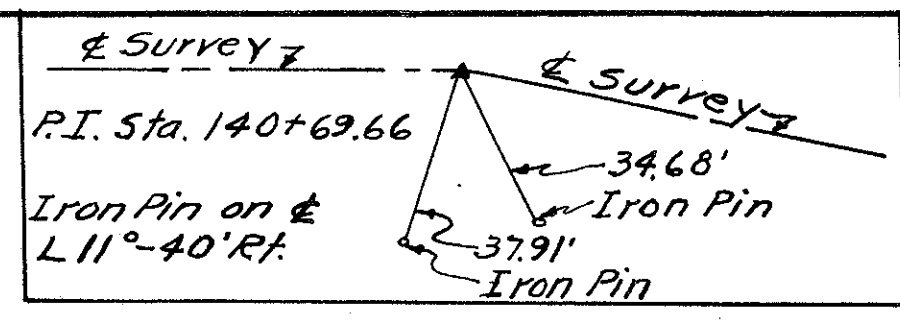
39+66 20" Spruce 34 Rt
 39+91 10" Elm 25 Rt
 40+02 19" Cherry 27 Rt
 40+34 3" Peach 30 Rt
 40+79 2" Maple 22 Rt
 40+79 9" Cherry 24 Rt
 41+00 2" Maple 23 Rt
 41+08 4" Maple 25 Rt

39+66 20" Spruce 34 Rt
 39+91 10" Elm 25 Rt
 40+02 19" Cherry 27 Rt
 40+34 3" Peach 30 Rt
 40+79 2" Maple 22 Rt
 40+79 9" Cherry 24 Rt
 41+00 2" Maple 23 Rt
 41+08 4" Maple 25 Rt

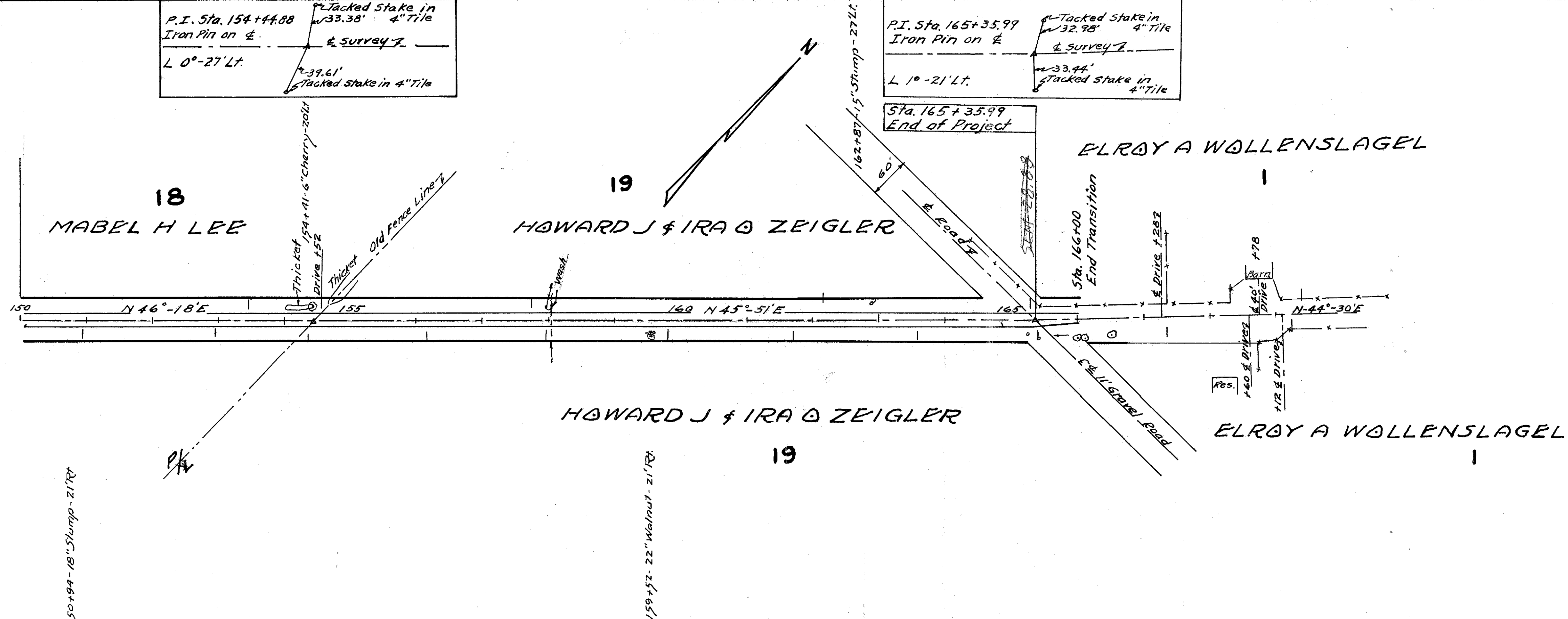
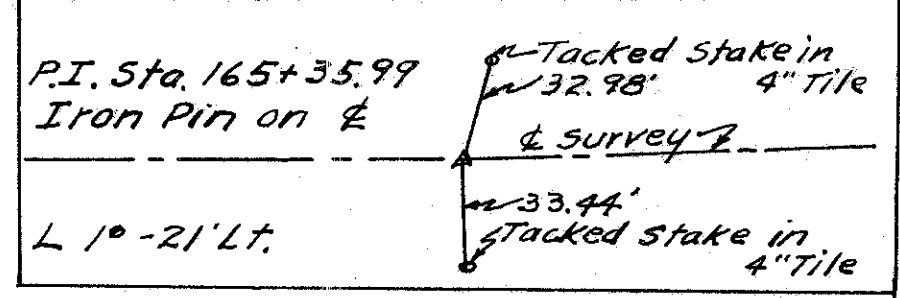
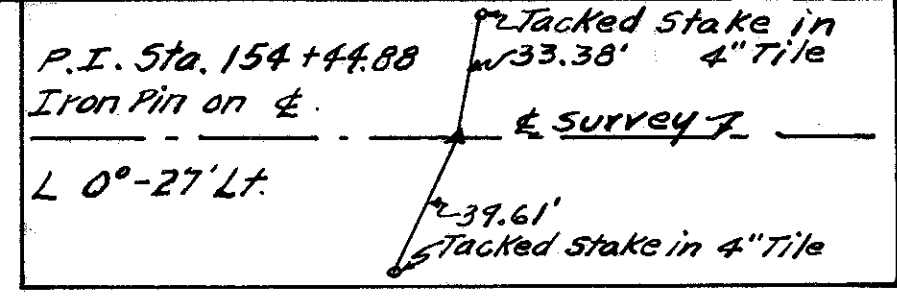


Surveyed July 1997

R 6004 45 G-12



- B.M.#23 - Elev. 821.16 Spike in Tel. Pole 28' Right of Sta. 119+64
- B.M.#24 - Elev. 825.67 Spike in 12" Hemlock 18' S. of SE Cor. House on L. Sta. 123+55
- B.M.#25 - U.S.G.S.B.M. Elev. 819.754 16' Right of Sta. 129+21
- B.M.#26 - Elev. 818.47 + in Bridge Wall, N.E. Cor. Sta. 131+29.72
- B.M.#27 - Elev. 818.47 Spike in Power Pole Left of Sta. 137+14
- B.M.#28 - Elev. 823.09 Spike in 18" Hemlock Right of Sta. 140+00
- B.M.#29 - Elev. 821.66 Spike in Tel. Pole Right of Sta. 143+85
- B.M.#30 - Elev. 822.98 Spike in Power Pole Left of Sta. 149+22



- B.M.#31 - Elev. 823.19 Spike in Telephone Pole Right of Sta. 154+35
- B.M.#32 - Elev. 824.10 Spike in 22" Walnut Right of Sta. 159+52
- B.M.#33 Elev. 823.09 Spike on E. Cor. Pump Base 100' Left of Sta. 164+00
- B.M.#34 - Elev. 825.77 Spike in 10" Walnut Right of Sta. 166+11