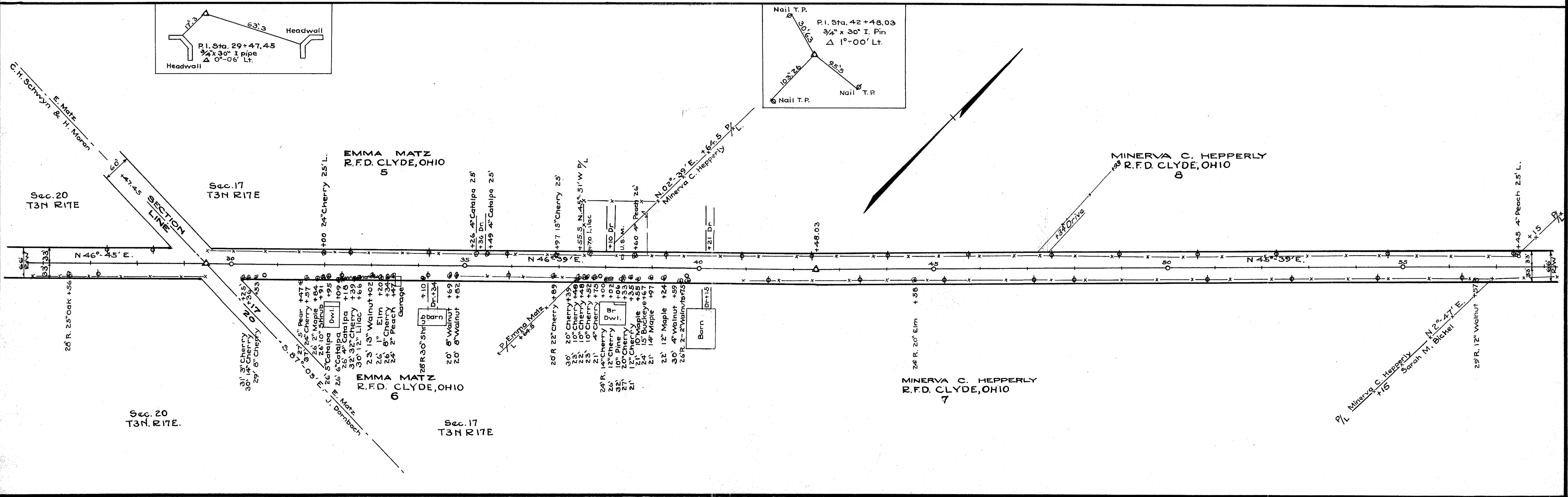
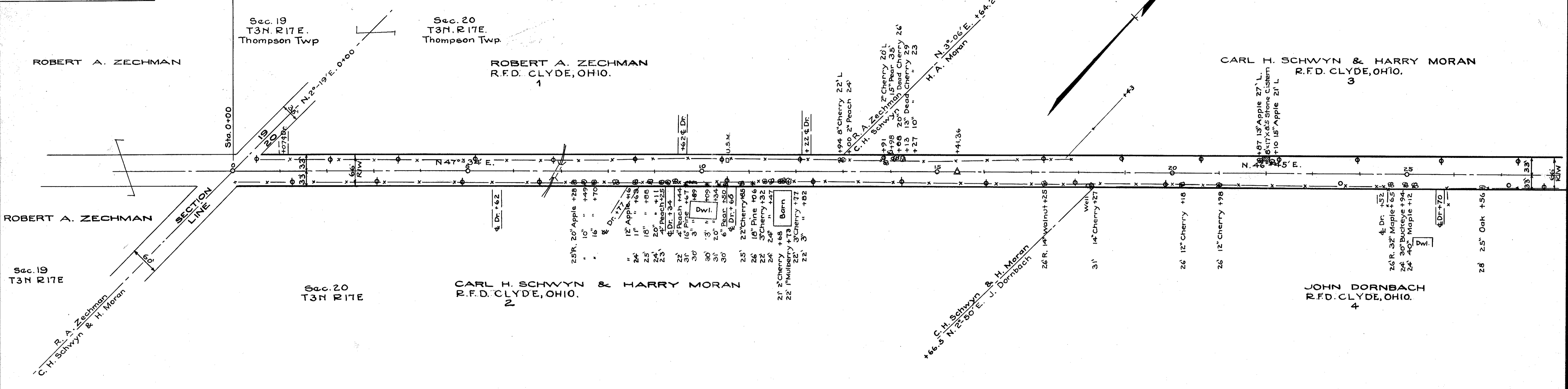
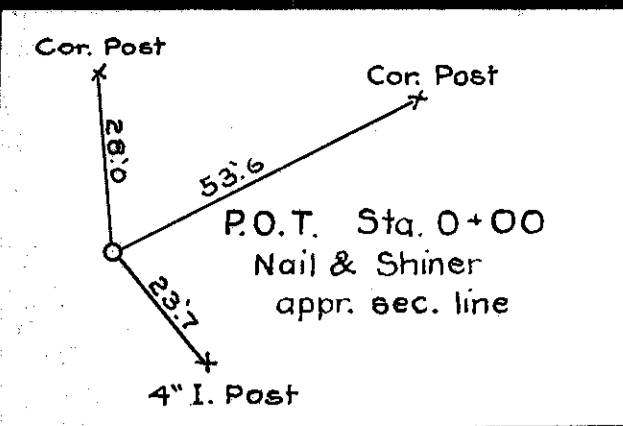


FOR ANY QUESTIONS PLEASE CONTACT ODOT DISTRICT 2 REAL ESTATE AT 419-353-8131

Revised July 1997

SENECA COUNTY  
S.H. 267 SEC. R-1, R-2 & Q (PT.)  
R / W PLAN

DATE: \_\_\_\_\_ DRAWN BY: A.P.  
REVISED: 8/7/13  
LENGTH OF PROJECT: 2.90 MI.



Revised # 7 G-13

G-13

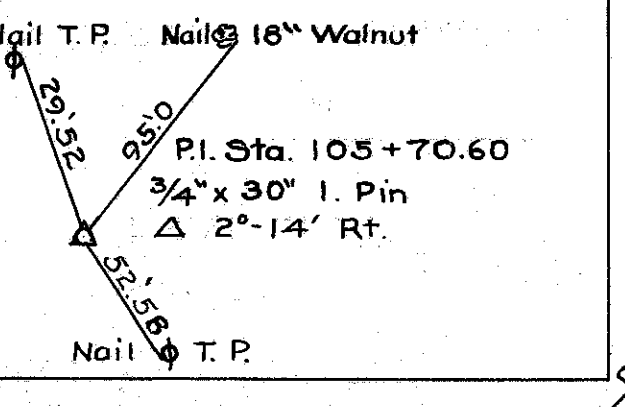
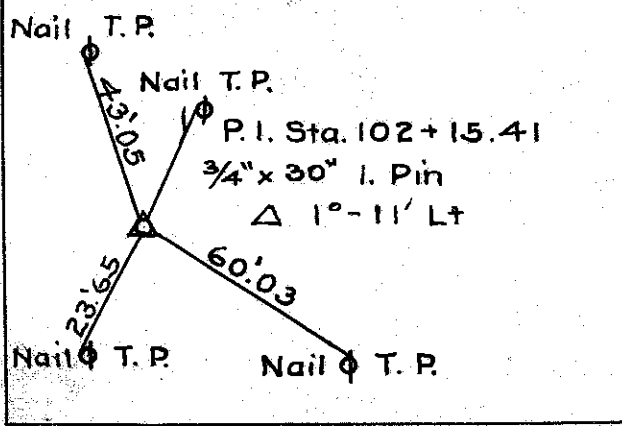
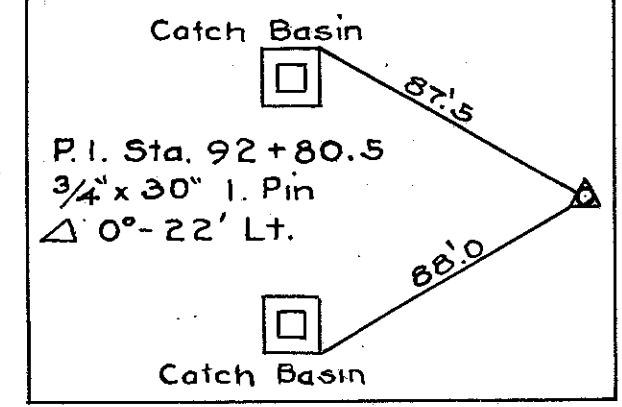
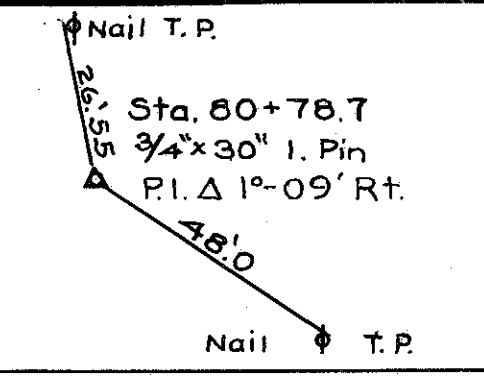
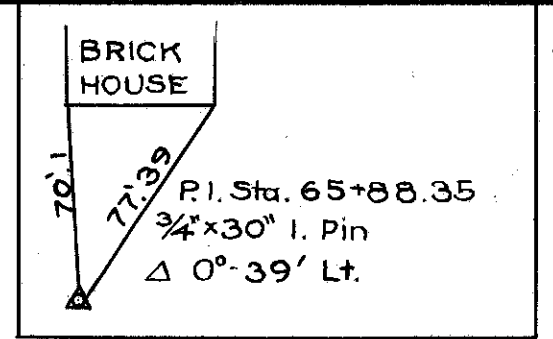
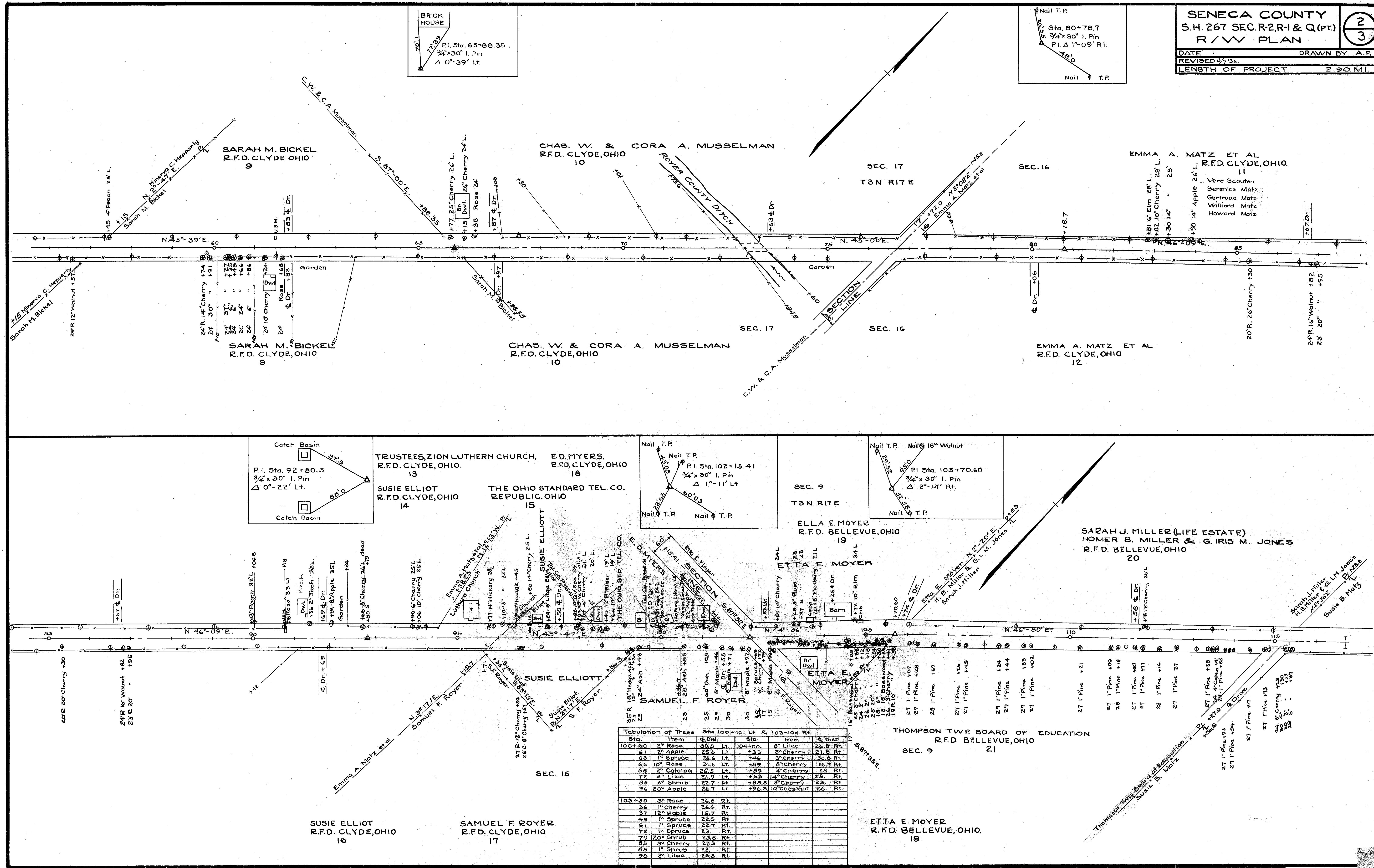
Drawn July 1936

FOR ANY QUESTIONS PLEASE CONTACT ODOT DISTRICT 2 REAL ESTATE AT 419-353-8131

**SENECA COUNTY**  
 S.H. 267 SEC. R-2, R-1 & Q (PT.)  
 R/W PLAN

DATE: \_\_\_\_\_ DRAWN BY: A.P.  
 REVISED 5/7/36.  
 LENGTH OF PROJECT: 2.90 MI.

2  
3

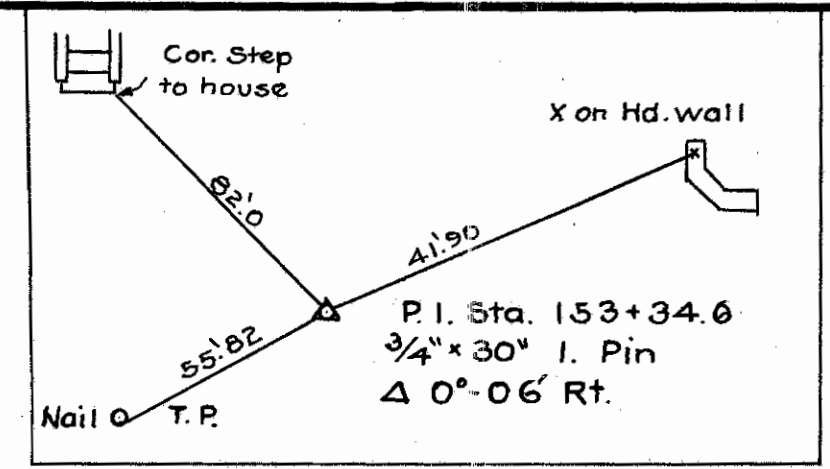
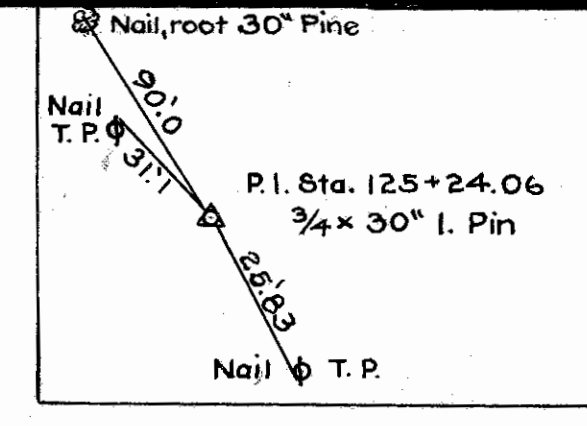
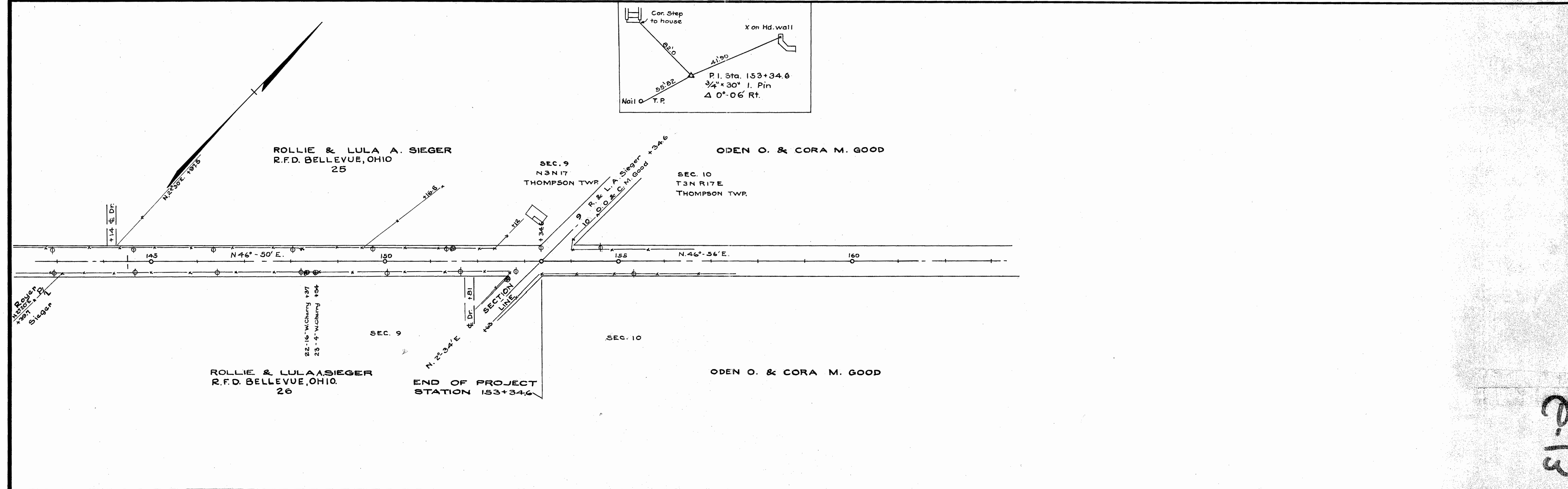
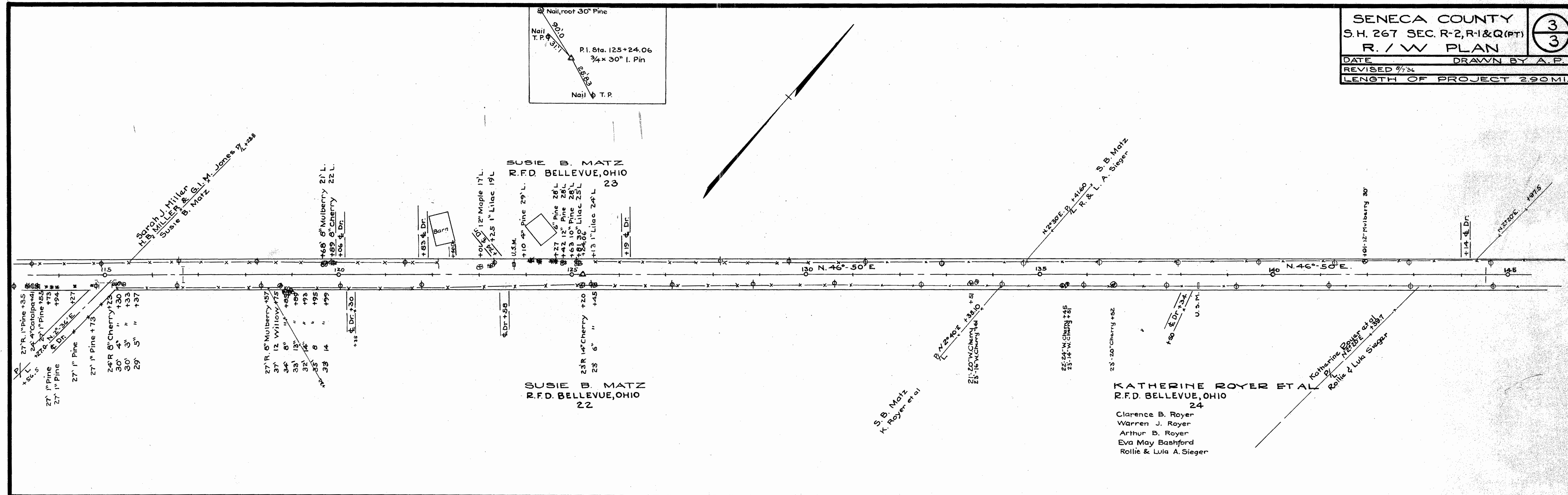


Tabulation of Trees Sta. 100-101 Lt. & 103-104 Rt.

Sta.	Item	Dist.	Sta.	Item	Dist.
100+80	2" Rose	30.2 Lt.	104+00	8" Lilac	26.8 Rt.
61	2" Apple	28.6 Lt.	104+05	3" Cherry	21.8 Rt.
63	1" Spruce	26.6 Lt.	74	3" Cherry	30.8 Rt.
66	10" Rose	31.6 Lt.	159	8" Cherry	16.7 Rt.
68	2" Catalpa	26.5 Lt.	159	4" Cherry	25. Rt.
72	6" Lilac	21.9 Lt.	763	14" Cherry	25. Rt.
86	6" Shrub	22.7 Lt.	185	3" Cherry	23. Rt.
96	20" Apple	26.7 Lt.	196.5	10" Chestnut	26. Rt.
103+30	3" Rose	26.8 Rt.			
36	1" Cherry	26.6 Rt.			
37	12" Maple	18.7 Rt.			
45	1" Spruce	22.5 Rt.			
61	1" Spruce	22.7 Rt.			
73	1" Spruce	23. Rt.			
79	20" Shrub	23.8 Rt.			
85	3" Cherry	27.3 Rt.			
85	1" Shrub	22. Rt.			
90	3" Lilac	23.5 Rt.			



Drawn  
 July, 1967



e-13