

#6005

FOR ANY QUESTIONS PLEASE CONTACT DISTRICT 2 REAL ESTATE AT 419-353-8131

FED. ROAD DIST. NO.	STATE	FED. AID PROJ. NO.	FISCAL YEAR
0110	OHIO		

1/12

I.C.H. NO. 267. SECTION R-122  
SENECA COUNTY

FILE NO.

# STATE HIGHWAY DEPARTMENT OF OHIO BUREAU OF CONSTRUCTION

## SEC. R-12 UPPER SANDUSKY-BELLEVUE ROAD

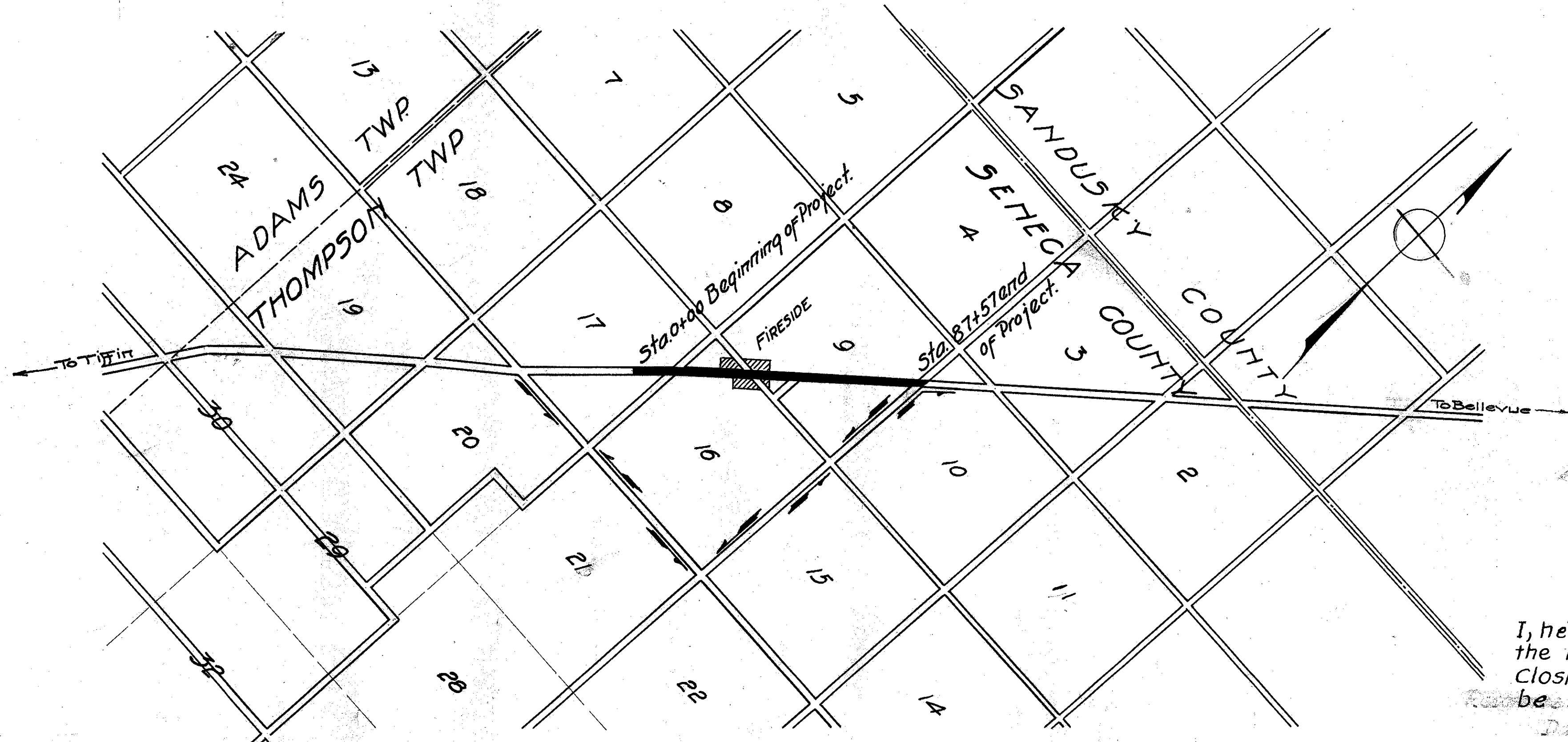
I.C.H. NO 267 PET'S NO. 3838 & NO 4281

### SENECA COUNTY

### THOMPSON TOWNSHIP

#### INDEX OF SHEETS

Sheet No 1	Title Page
"	2 Typical Cross-sections of Improvement.
"	3 Plan & Profile of improvement.
"	4 Plan & Profile of improvement.
"	5 Plan & Profile of improvement.
"	6 Cross Sections of improvement.
"	7 Cross Sections of improvement.
"	8 Cross Sections of improvement.
"	9 Summary of Quantities, Culverts & Bridges
"	10 Summary of Quantities, Driveways & Drain tile
"	11 & 12 Plans of Bridge at Sta. 7+48.8



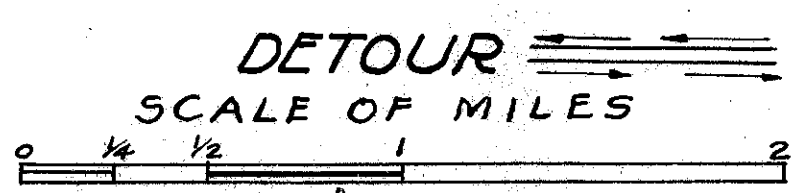
Note:-  
The standard specifications of the State of Ohio Division of Highways in force on date of Contract will govern this improvement.

I, hereby approve these plans and declare that the making of this improvement will require the closing to traffic of the highway and detours will be indicated by signs as shown on plan.

### LOCATION PLAN

SCALE 2" = 1 MILE

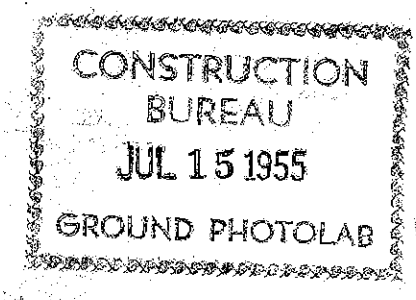
PORTION TO BE IMPROVED



Approved *H. J. Acker*  
Date 2-19-24 County Surveyor

We, the Commissioners of Seneca County, hereby approve these plans and certify that the right-of-way of 60ft. is available for the construction of the above improvement.

Signed *W. A. Jordan*  
*E. L. Park*  
*J. W. Anderson*  
Date 2-19-24 County Commissioners.



#### CONVENTIONAL SIGNS

- State Line
- County Line
- Township Line
- Section Line
- Property Line not fenced
- Center Line
- City or Village Line
- Wire fence
- Rail fence
- Telephone or Telegraph
- Steam Railroad
- Electric Lines
- Trees

Scales  
Plan 1-in. = 100ft.  
Profile (vertical) 1-in. = 10ft.  
Profile (horizontal) 1-in. = 100ft.  
Cross Sections 1-in. = 5ft.

Approved *H. J. Acker*  
Date 2-12-24 Resident Engineer

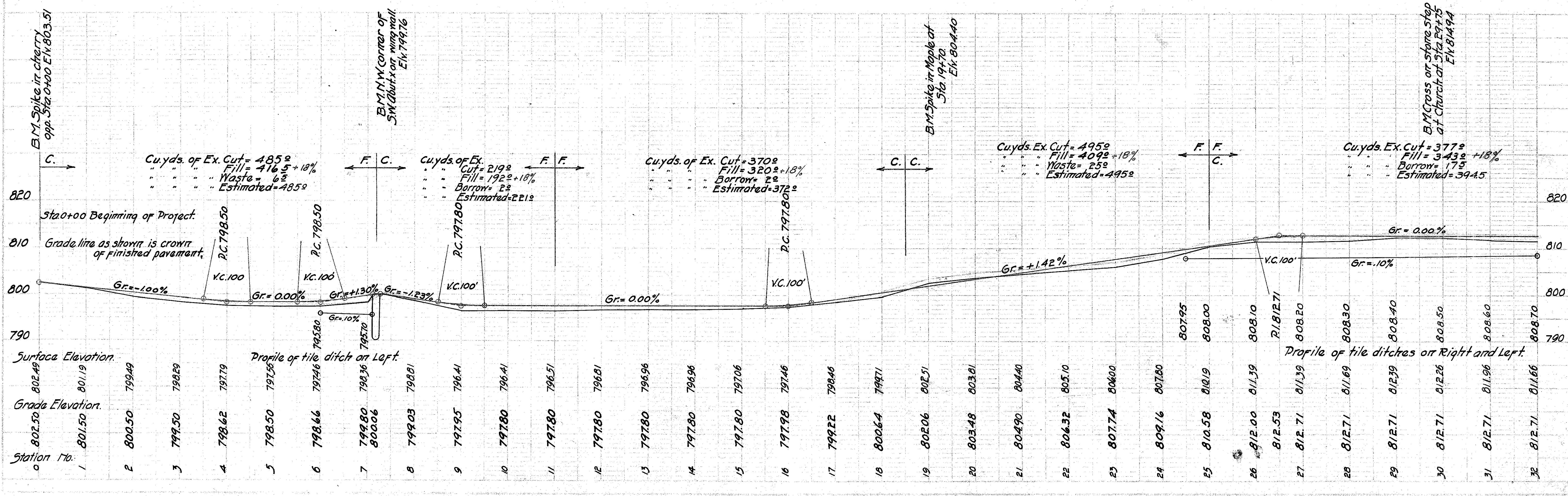
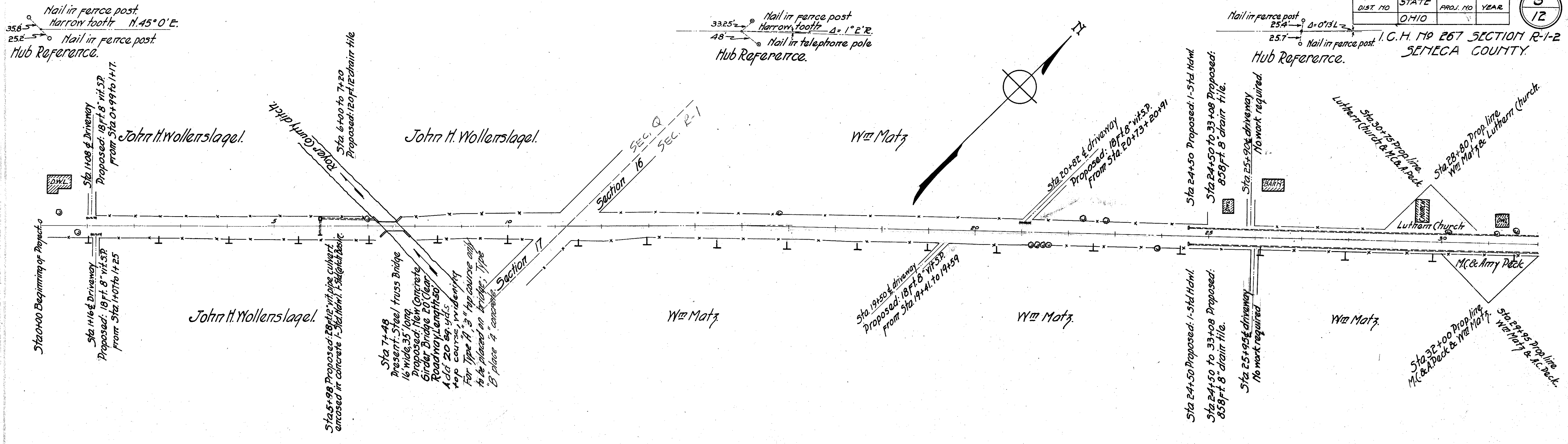
Approved *M. D. Amador*  
Date Mar. 3/19/24 Division Engineer

Approved *G. F. Schlesinger*  
Date 3/3/24 State Highway Engineer

Approved *S. Boulay*  
Date 3/3/24 Director of Highways and Public Works.

I, hereby approve these plans and declare that the making of this improvement will require the closing to traffic of the highway and detours will be indicated by signs as shown on plans

Signed *L. C. ...*  
Date 4/1/24 State Highway Commissioner

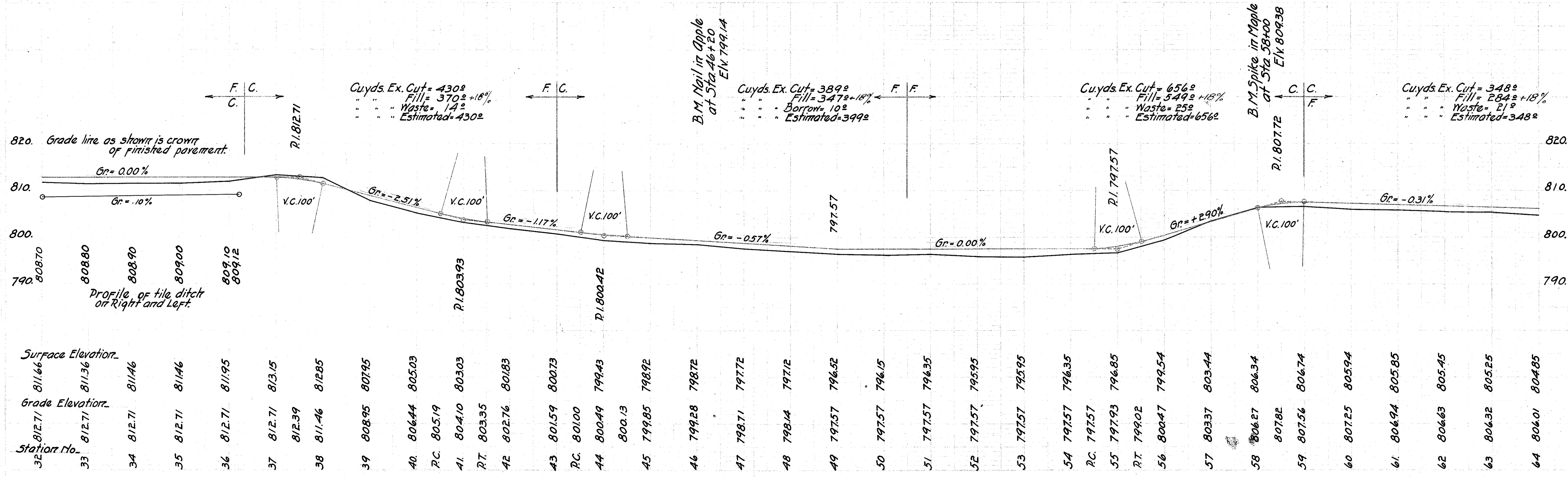
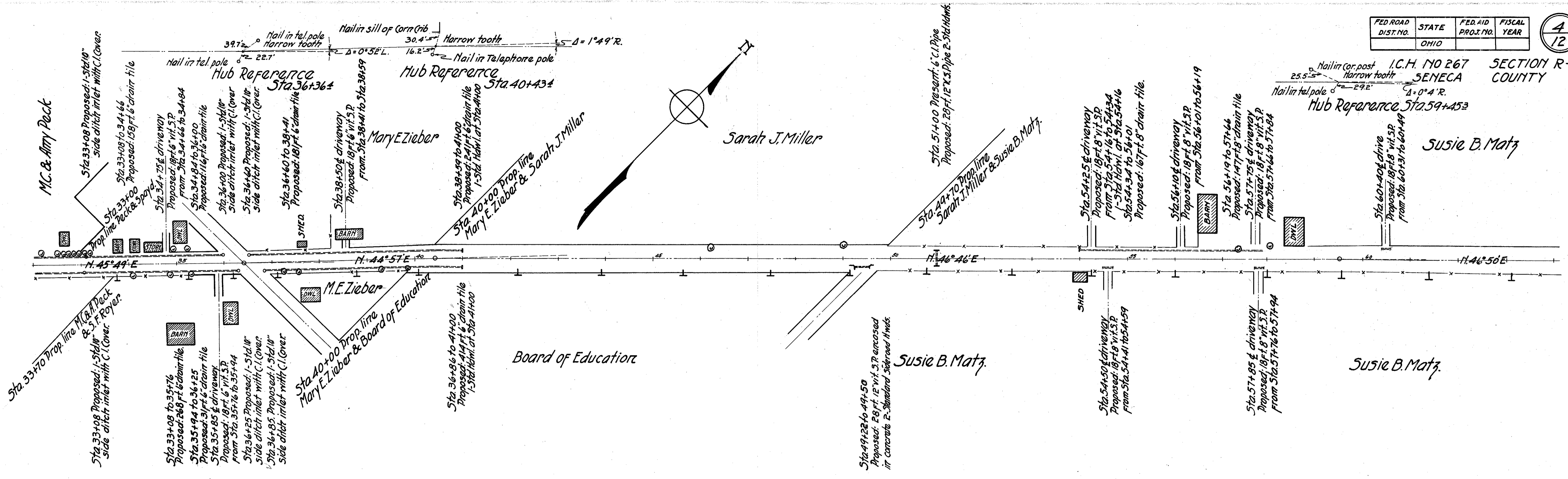


FOR ANY QUESTIONS PLEASE CONTACT ODOT DISTRICT 2 REAL ESTATE AT 419-353-8131

FED. ROAD DIST. NO.	STATE	FED. AID PROJ. NO.	FISCAL YEAR
	OHIO		

4  
12

I.C.H. NO 267 SECTION R-1-2  
SENECA COUNTY  
Hub Reference Sta. 59+45.3

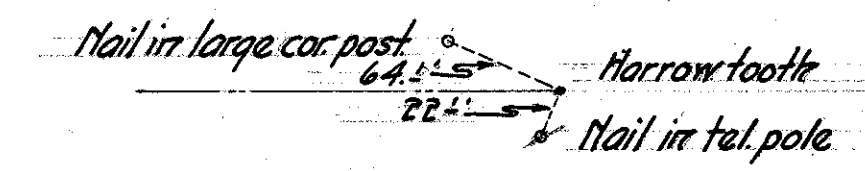


FOR ANY QUESTIONS PLEASE CONTACT ODOT DISTRICT 2 REAL ESTATE AT 419-353-8131

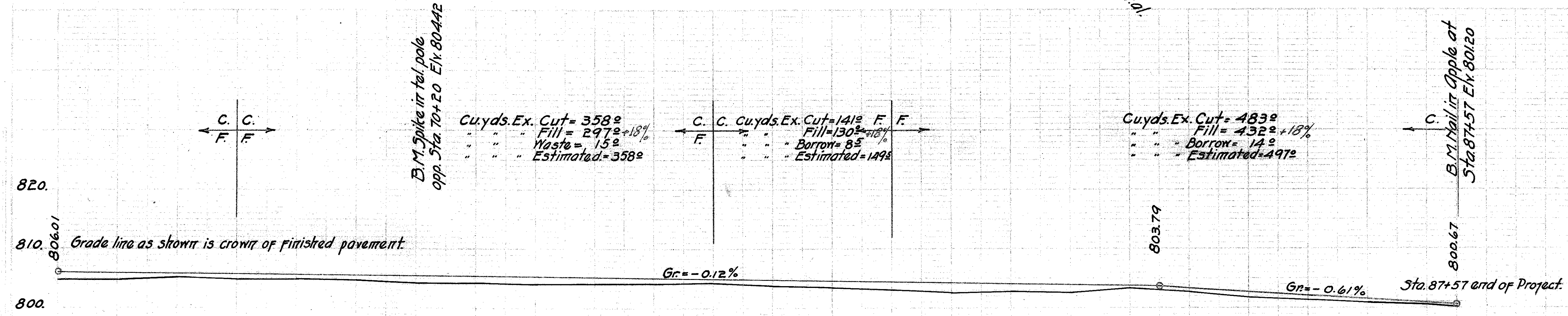
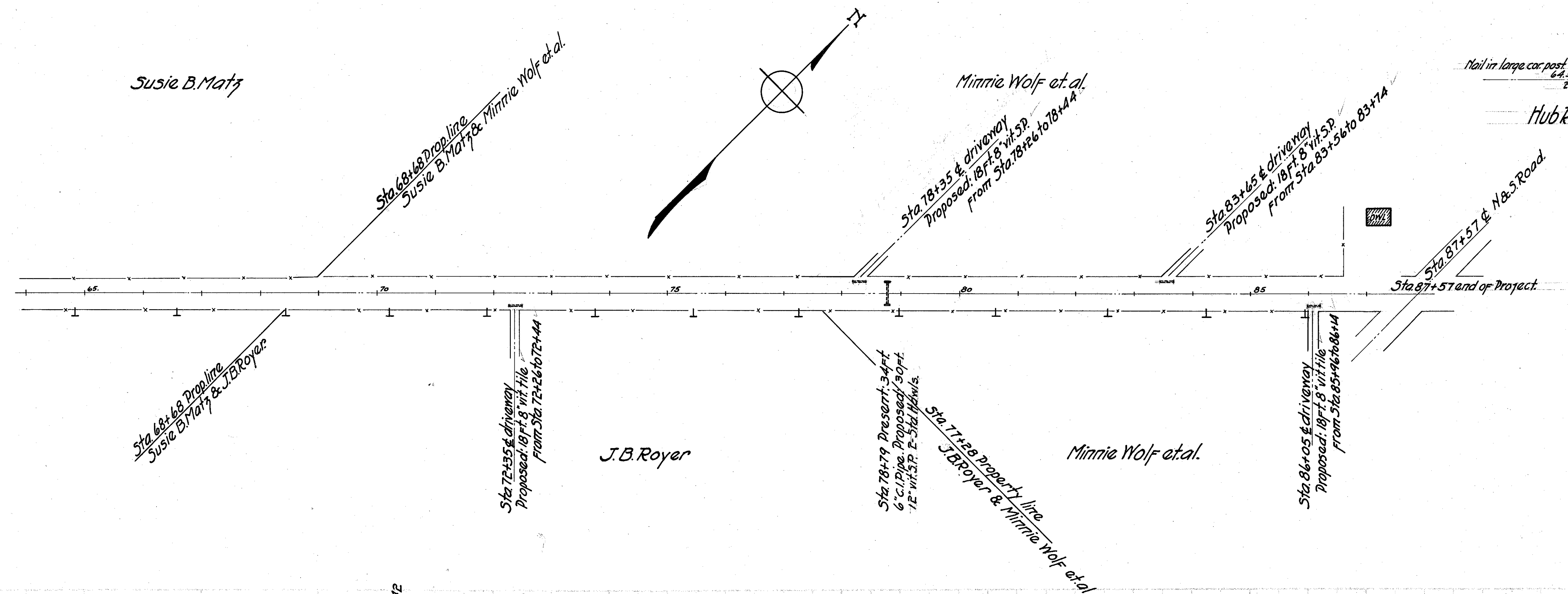
FED. ROAD DIST. NO.	STATE	FED. AID PROJ. NO.	FISCAL YEAR
	OHIO		

5  
12

I.C.H. NO. 267 SECTION R-1-2  
SENECA COUNTY



Hub Reference Sta 110+53.4



Station	Surface Elevations	Grade Elevations
64	804.85	806.01
65	804.85	805.89
66	805.15	805.77
67	804.82	805.65
68	804.82	805.53
69	804.77	805.41
70	804.22	805.29
71	804.32	805.17
72	804.04	805.05
73	804.09	804.93
74	804.09	804.81
75	804.29	804.69
76	803.29	804.57
77	803.49	804.45
78	803.09	804.33
79	802.59	804.21
80	802.89	804.09
81	802.59	803.97
82	803.29	803.85
83	802.79	803.79
84	801.89	803.48
85	801.16	802.87
86	800.86	802.25
87	800.46	801.64
+57	800.16	801.02
		800.67

FOR ANY QUESTIONS PLEASE CONTACT ODOT DISTRICT 2 REAL ESTATE AT 419-353-8131