

#605

FOR ANY QUESTIONS PLEASE CONTACT ODOT DISTRICT 2 REAL ESTATE AT 419-353-8131

S.H. I.C.H. No. 267
SECTION R-3
SENECA COUNTY

STATE OF OHIO
DEPARTMENT OF HIGHWAYS
UPPER SANDUSKY-BELLEVUE ROAD
S.H. I.C.H. NO. 267 SECTION R-3 PET. NO. 5289
SENECA COUNTY

THOMPSON TOWNSHIP JULY 1929

The Standard Specifications of the State of Ohio, Department of Highways in force on date of Contract will govern this Improvement.

I hereby approve these plans, and declare that the making of this improvement will require the closing to traffic of the highway and that detours will be provided as shown on the plan and estimates

Approved: *B.H. Baker*
Date, 9/3/29 Resident District Deputy Director

Approved: *John H. Fuller*
Date, 8-13-29 Resident Division Deputy Director

Approved: *Carl J. Reigler*
Date, 9/5/29 Chief Engineer
Bureau of Construction

Approved: _____
Date, _____ Chief Engineer
Bureau of Maintenance

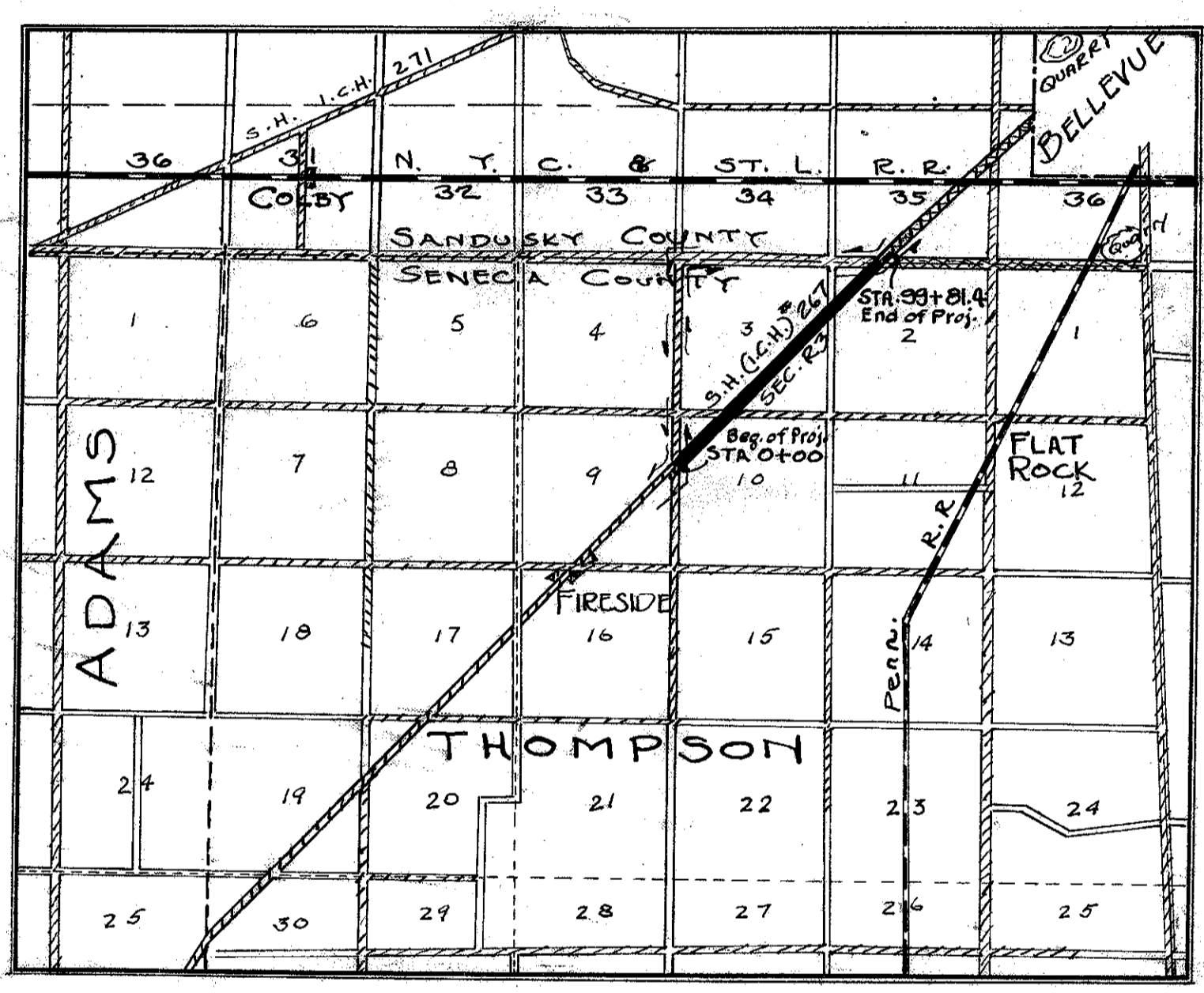
Approved: _____
Date _____ Chief Engineer
Bureau of Bridges

Approved: *Frank Whaley*
Date, 9-5-29 Chief Engineer & First Ass't. Director

Approved: *Robert Wood*
Date, 9-5-29 Director of Highways

CONVENTIONAL SIGNS

STATE LINE	-----
COUNTY LINE	-----
TOWNSHIP LINE	-----
SECTION LINE	-----
PROP. LINE NOT FENCED	-----
CENTER LINE	-----
CITY OR VILLAGE LINE	-----
FENCE	-----
TELEPHONE or TELEGRAPH	TTTTT
STEAM RAILROAD	-----
ELECTRIC LINE	-----
GUARD RAIL	-----
DRAIN PIPE - NEW	-----
DRAIN PIPE - OLD	-----



- LOCATION PLAN -
SCALE OF MILES

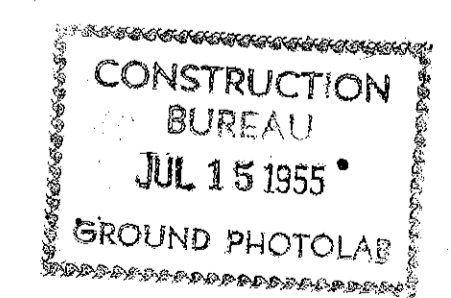
PORTION TO BE IMPROVED	-----
DETOURS SHOWN THUS	-----
HAUL ROADS	-----
IMPROVED ROADS	-----

- SCALES -

PLAN	1" = 100 FT.
PROFILE (Vertical)	1" = 10 FT.
PROFILE (Horizontal)	1" = 100 FT.
CROSS SECTIONS	1" = 5 FT.

- INDEX OF SHEETS -

TITLE PAGE	Page 1
TYPICAL CROSS SECTIONS	Page 2
PLANS and PROFILE	Page
CROSS SECTIONS	Page
STRUCTURAL PLANS	Page
SUMMARY SHEET	Page



SUPPLEMENTAL PRINTS OF STRUCTURAL STANDARDS.
STD. DRAWING NUMBERS - 100, 300, 305, 121,
95, 96 & 98

We the Commissioners of Seneca County, hereby approve these plans and certify that the right-of-way 60 feet wide is available for the construction maintenance and repair of the above Highway.

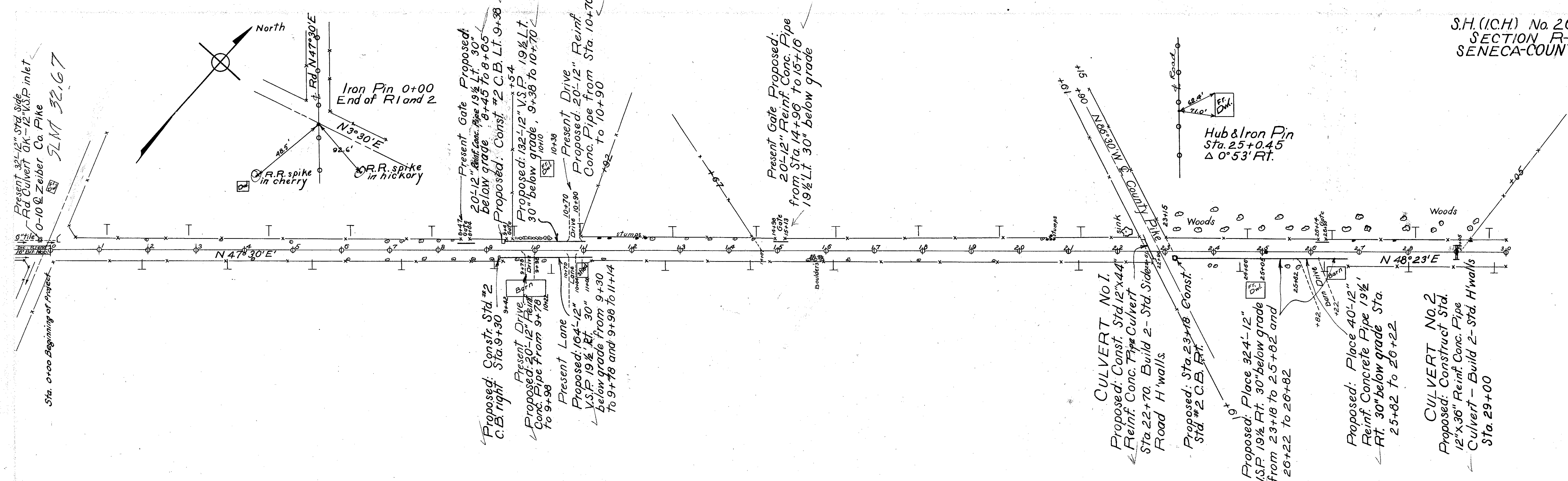
H. A. Driftler

B. D. Myers

M. R. Hooper

Date: July 13-1929 County Commissioners.

FOR ANY QUESTIONS PLEASE CONTACT ODOT DISTRICT 2 REAL ESTATE AT 419-353-8131

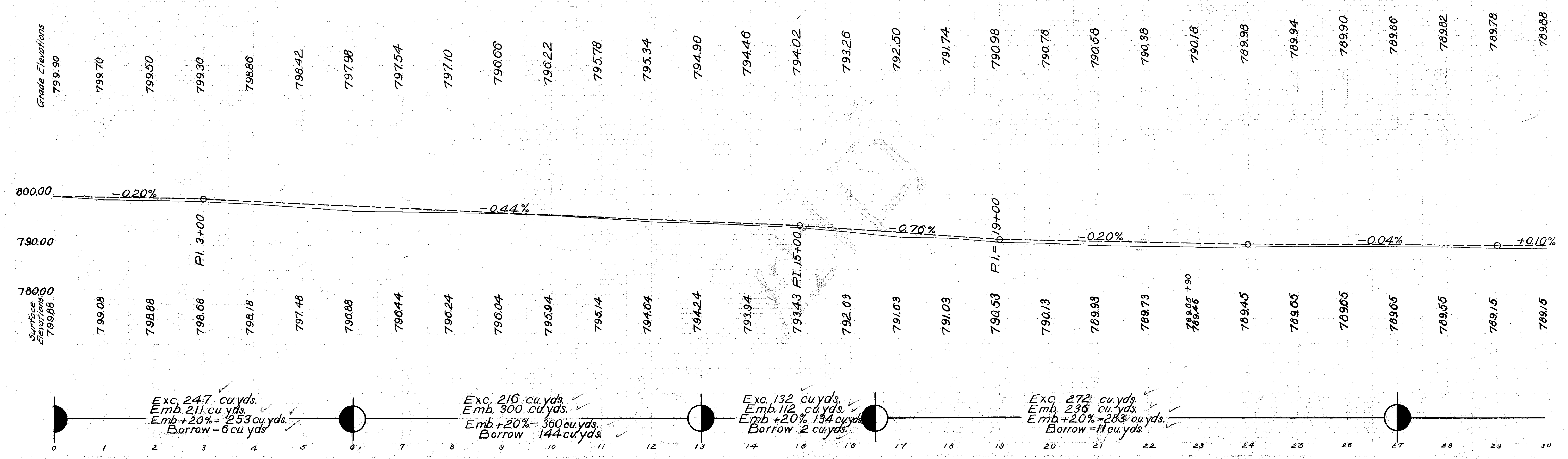


BM #1 - Sta. 0+9 Lt.
R.R. spike Wild Cherry
El. 800.80

BM #2 - Sta. 8+88, Lt.
R.R. spike in Locust
El. 795.73

BM #3 Sta. 22+78
R.R. spike in Oak Lt.
El. 790.19

NOTE: Grade Line shown is crown of finished pavement

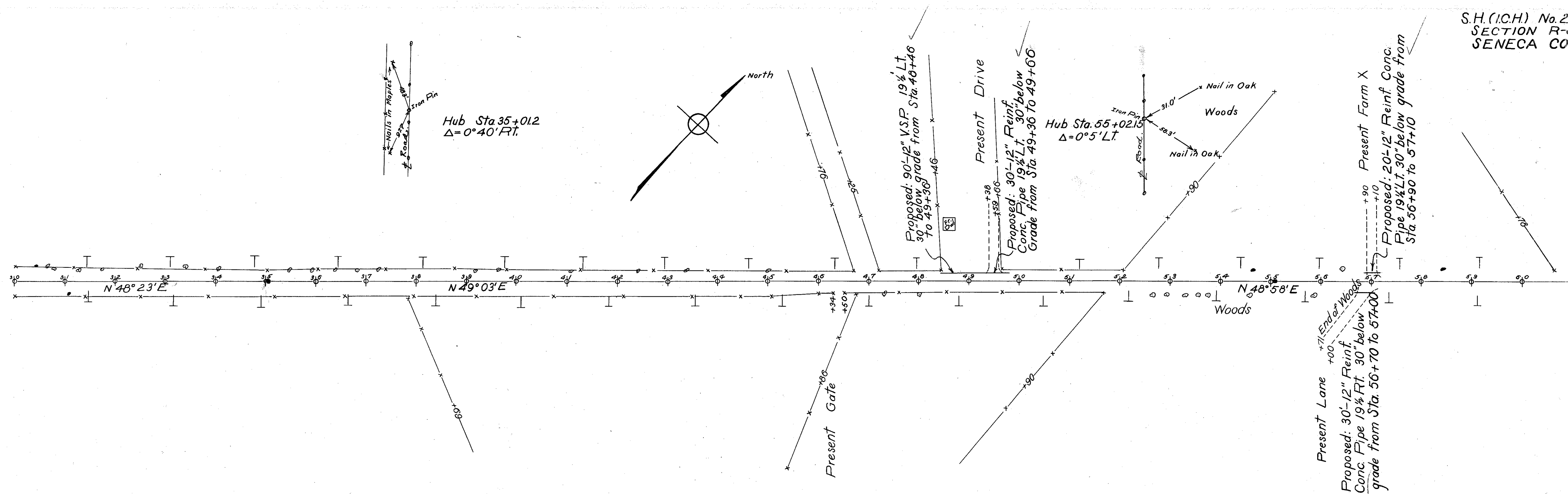


Exc. 247 cu. yds.
Emb. 211 cu. yds.
Emb +20% = 253 cu. yds.
Borrow = 6 cu. yds.

Exc. 216 cu. yds.
Emb. 300 cu. yds.
Emb +20% = 360 cu. yds.
Borrow = 144 cu. yds.

Exc. 132 cu. yds.
Emb. 112 cu. yds.
Emb +20% = 134 cu. yds.
Borrow = 2 cu. yds.

Exc. 272 cu. yds.
Emb. 236 cu. yds.
Emb +20% = 283 cu. yds.
Borrow = 11 cu. yds.

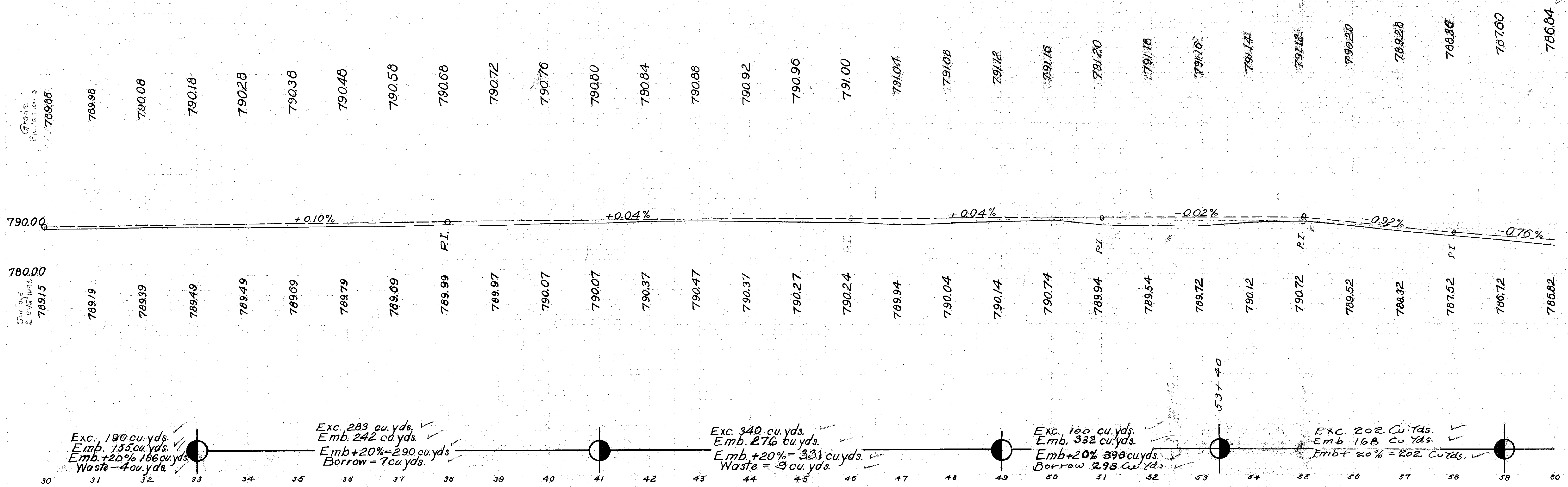


B.M.#4 - Sta. 33+44
R.R. spike in Ash Lt.
El. 790.74

B.M.#5 - Sta. 44+99
R.R. spike in Wild
Cherry on Lt.
El. 791.03

B.M.#6 - Sta. 56+54
Iron Pin in old
stump - 34' Ft.
El. 792.11

NOTE: Grade line shown is crown of finished pavement.



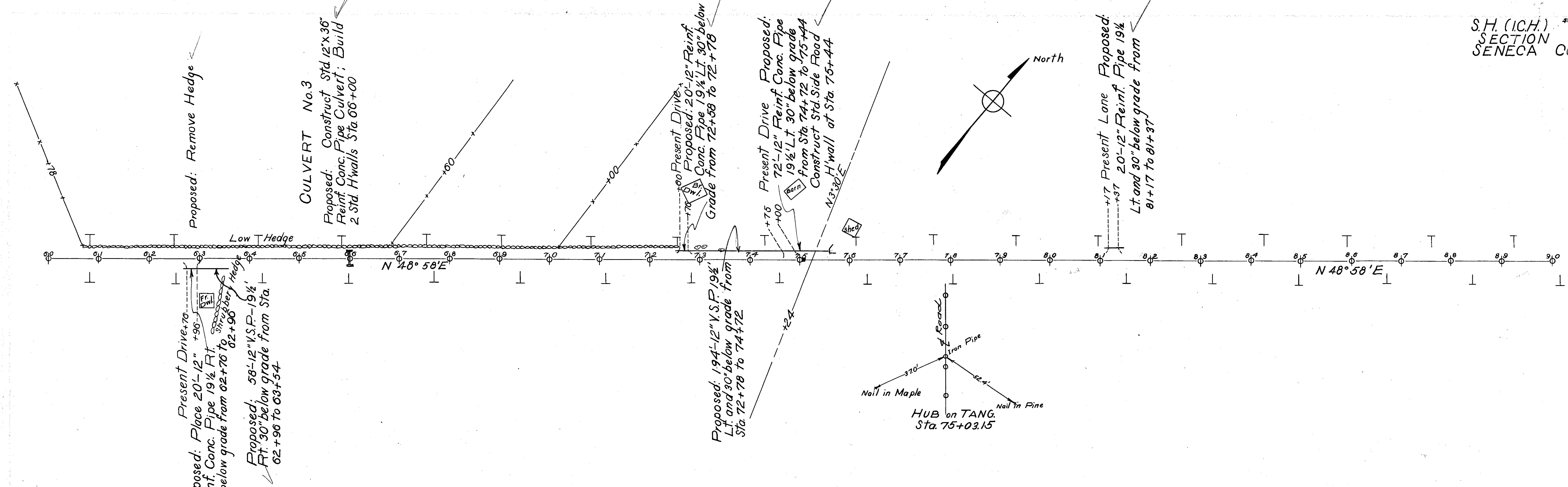
Exc. 190 cu. yds.
Emb. 155 cu. yds.
Emb. +20% = 186 cu. yds.
Waste = 4 cu. yds.

Exc. 283 cu. yds.
Emb. 242 cu. yds.
Emb. +20% = 290 cu. yds.
Borrow = 7 cu. yds.

Exc. 340 cu. yds.
Emb. 276 cu. yds.
Emb. +20% = 331 cu. yds.
Waste = 9 cu. yds.

Exc. 100 cu. yds.
Emb. 332 cu. yds.
Emb. +20% = 398 cu. yds.
Borrow = 298 cu. yds.

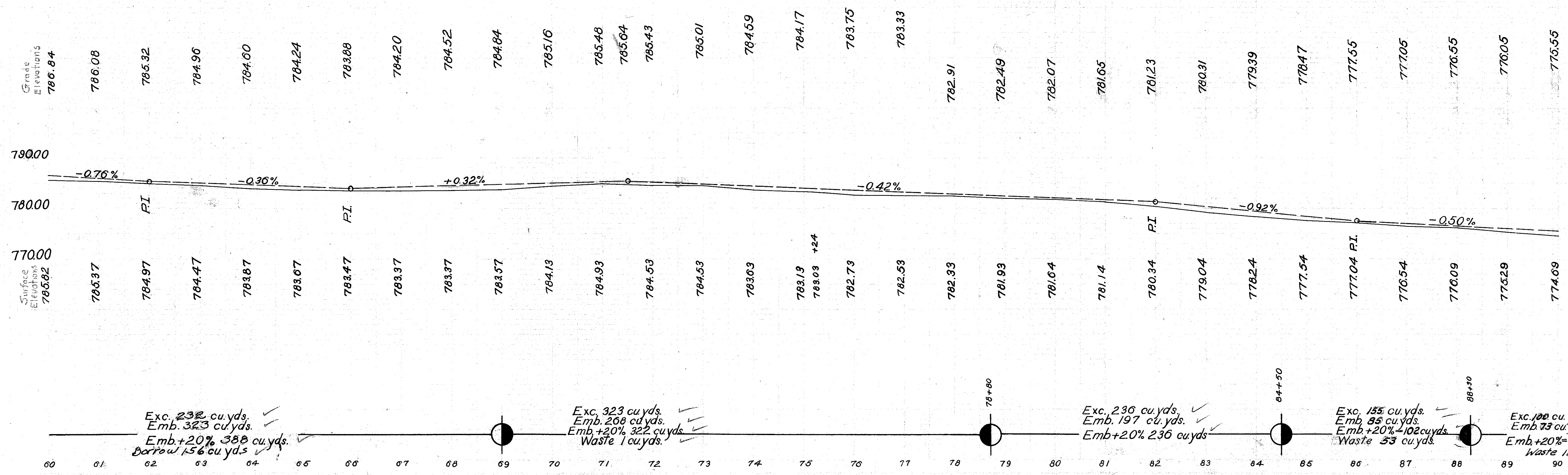
Exc. 202 cu. yds.
Emb. 168 cu. yds.
Emb. +20% = 202 cu. yds.



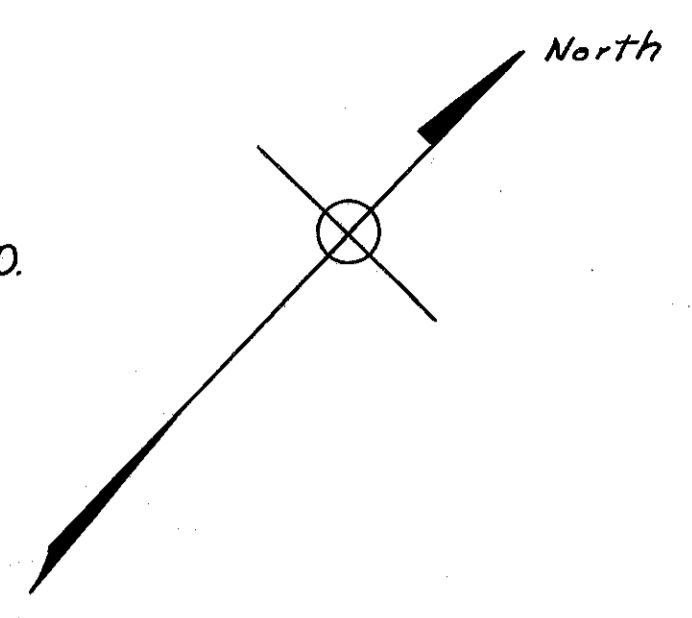
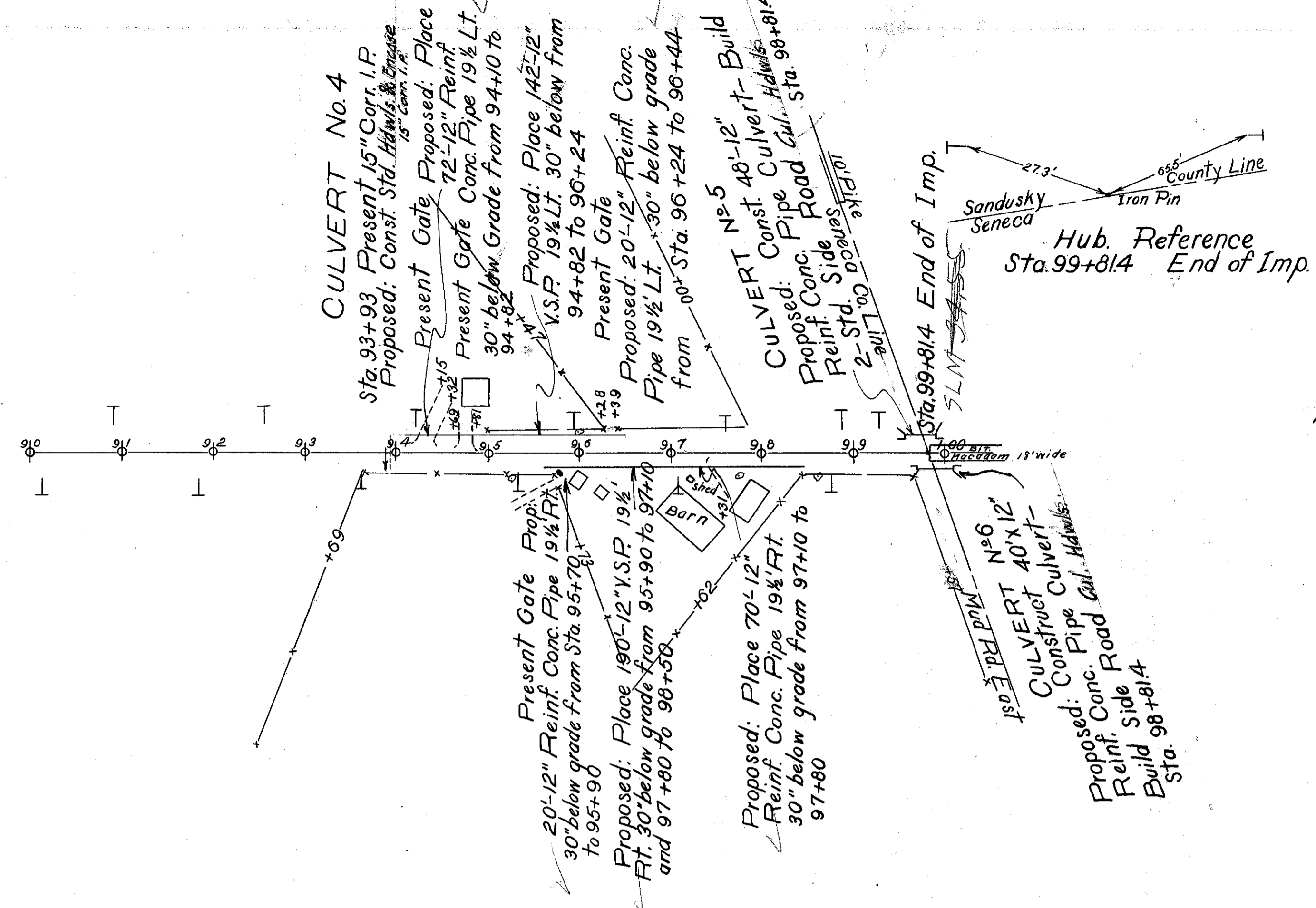
BM #7 - Sta. 64+16
R.R. spike in pole
#9333 Lt.
El. 765.00

BM #8 - Sta. 73+04
Iron Pin in Locust
28' Lt.
El. 765.29

BM #9 - Sta. 80+97
Iron Pin in Tel.
Pole #9322 on Lt.
El. 763.29

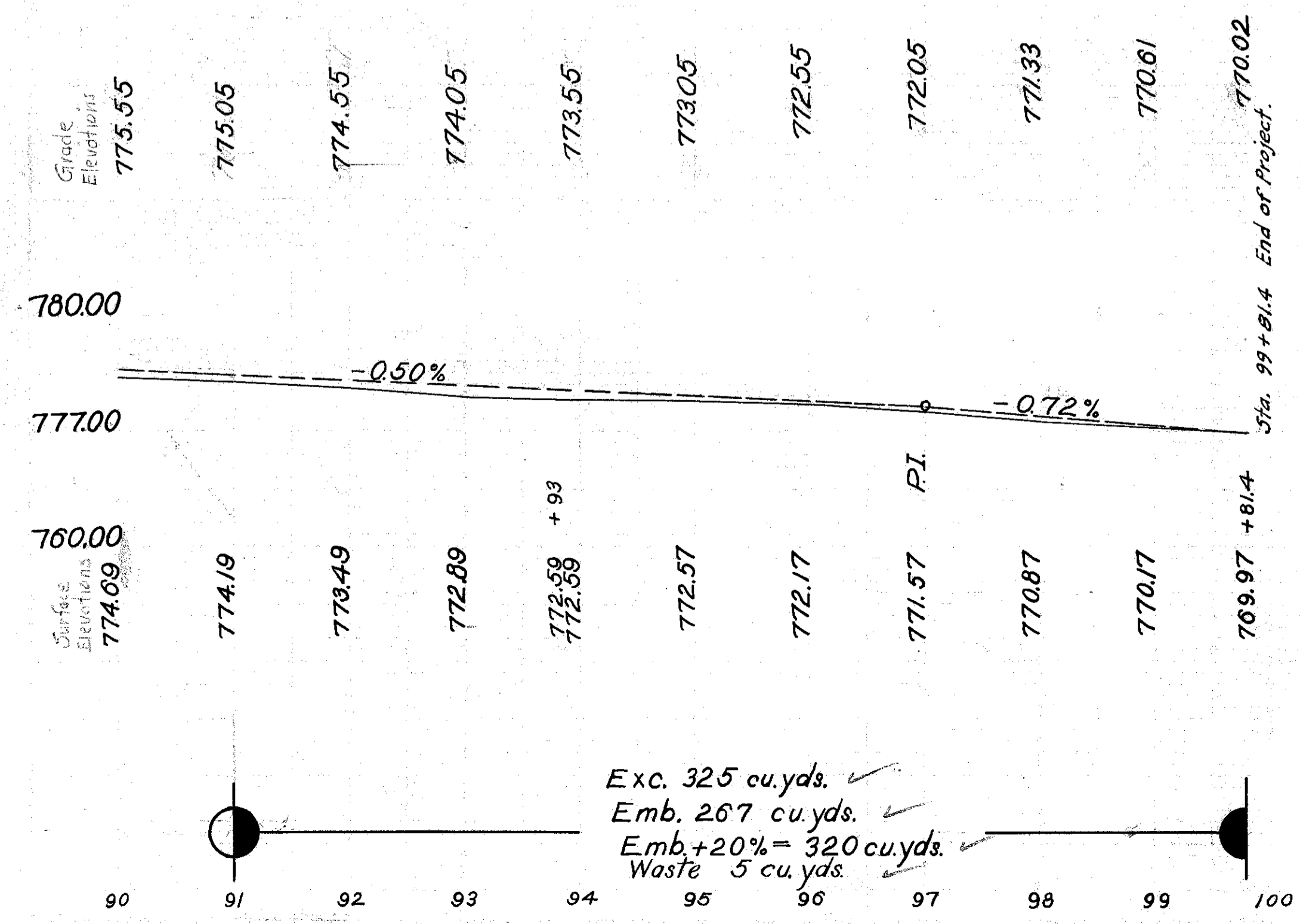


FOR ANY QUESTIONS PLEASE CONTACT ODOT DISTRICT 2 REAL ESTATE AT 419-353-8131



B.M.#10 - Sta. 90+90
RR spike in Tel.
Pole #9316 on Lt.
El. 775.01

B.M.#11 - Sta. 98+55
RR spike in large
elm 25' on Rt.
El. 772.13



Exc. 325 cu. yds.
Emb. 267 cu. yds.
Emb. +20% = 320 cu. yds.
Waste 5 cu. yds.

FOR ANY QUESTIONS PLEASE CONTACT ODOT DISTRICT 2 REAL ESTATE AT 419-353-8131