

O.D.O.T. DISTRICT 2 SURVEY OFFICE (USE ONLY)

PERSONNEL

REFERENCE NO. A

SHEET 1 OF 13

NOTES MILLER DATE 4/26/23

H.C. MILLER WEATHER CLEAR

R.C. RHOADES TEMP. 57°

ROUTE SR 18

COUNTY SENECA

TOWNSHIP LOUDON

SECTION 8

DWG BY RHOADES PID 101280

T 2 N R 13 E

TYPE MONUMENT P.K.NAIL

ON SURFACE - ~~BELOW~~ ON

OFFSET  $\odot$  PAVEMENT ON \_\_\_\_\_ LT : RT

- TO - EDGE PAVEMENT

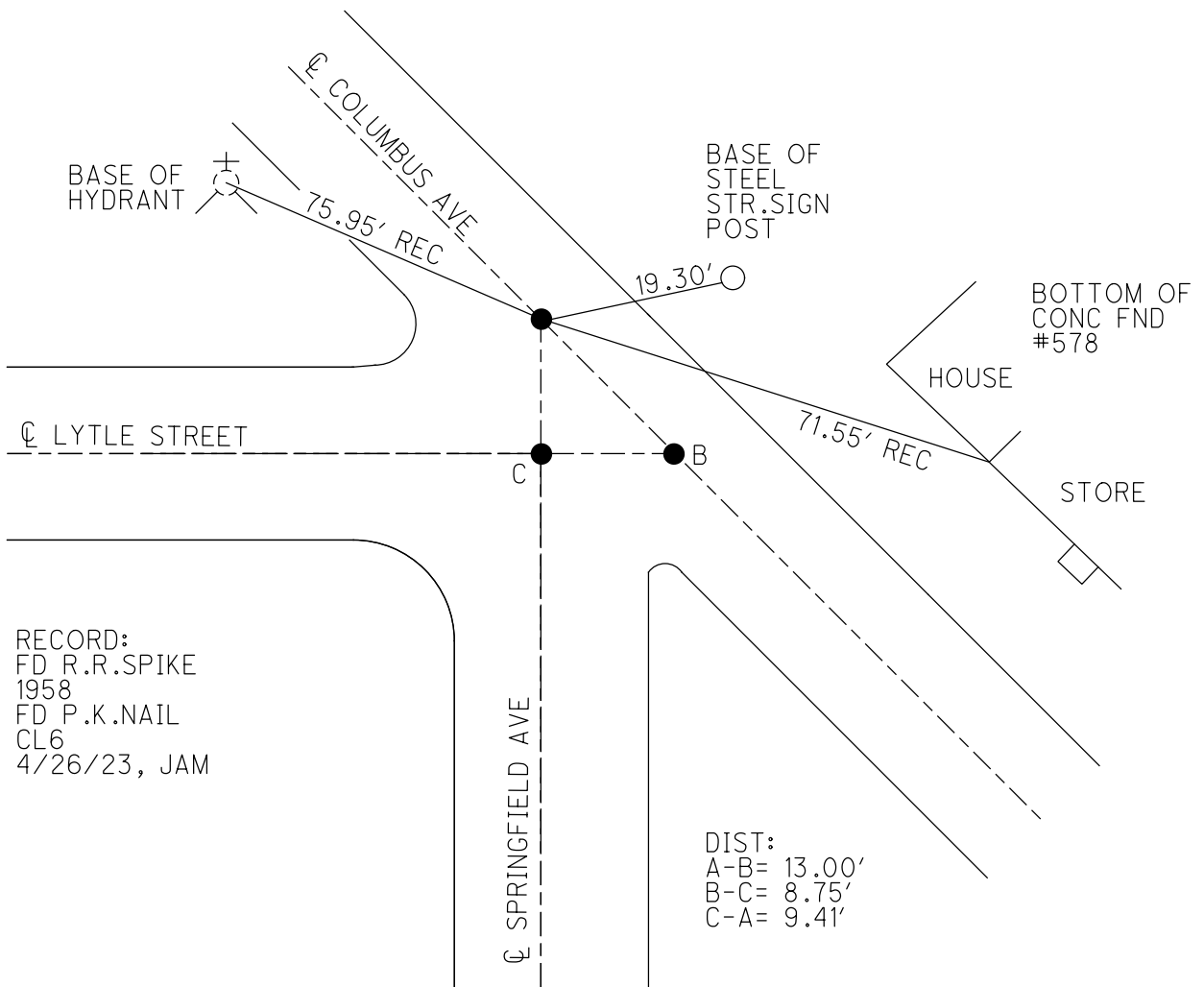
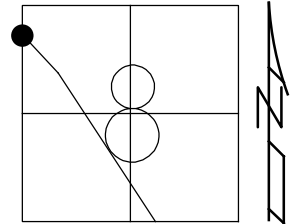
STATION: 82+36

HORIZ.DATUM: SEN LDP

GEOID: NAVD88 2018

GRID: NORTHING: 310134.778

EASTING: 94703.491



PERSONNEL TITLE PERSONNEL TITLE

Hank

COUNTY Seneca

DATE 4-16-58

S. R. #18

WEATHER Fair

SEC. Fostoria (Pt.)

TEMP. 72

DESCRIPTION

LEFT

CENTER LINE

RIGHT

JOB NO.



P.I. 82+81.04

$\Delta = 10-19'$  Rt

$E = 4.54'$

$T = 97' \pm$

Tang = split Pmt at each End of curved curb.

P.I. Determined from  $\pm$  of existing Pmt both direction

P.I. Ties 36" Maple E. 20.78'

~~30" Maple~~  
Fire Hydrant S. 41.55'

Power Pole W 30.80'

PERSONNEL	TITLE	PERSONNEL	TITLE
R. Darr			
R. Zeyen			
H. Ward			

COUNTY Seneca (Fostoria) DATE 2-20-58

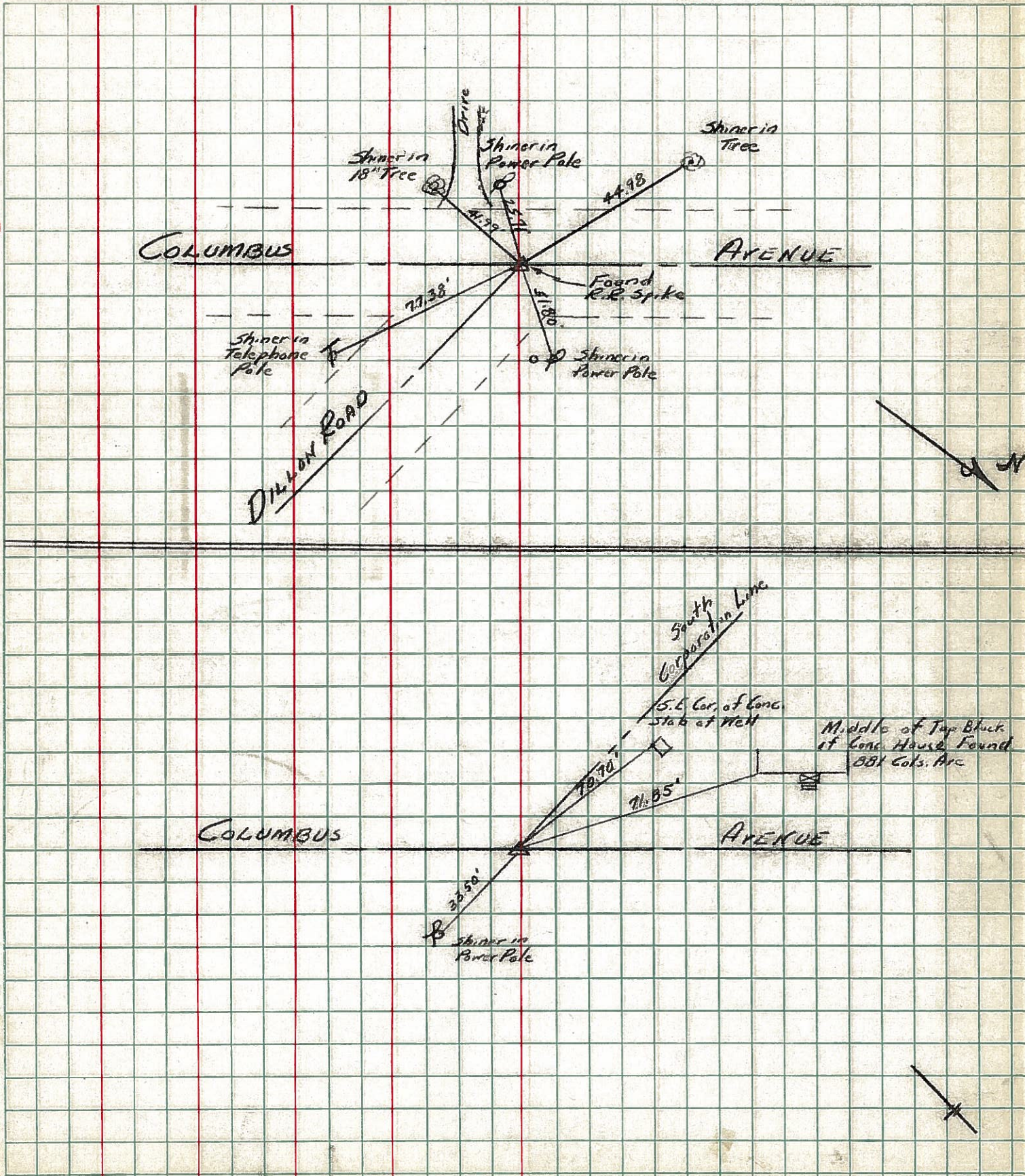
S. R. 18 WEATHER Clear & Mild

SEC. \_\_\_\_\_ TEMP. +25°

DESCRIPTION Ties for points on Columbus Ave. from Lytle St. to S.E. JOB NO. \_\_\_\_\_

LEFT CENTER LINE RIGHT

①



PERSONNEL TITLE PERSONNEL TITLE

R. Darr

H. Ward

R. Zeyen

COUNTY *Seneca (Fostoria)*

DATE *2-14-58*

S. R. *18*

WEATHER *Cloudy & Cold*

SEC. \_\_\_\_\_

TEMP. *+26°*

DESCRIPTION

*Ties for points on Columbus Ave From Lytle St. SE.*

JOB NO. \_\_\_\_\_

LEFT

CENTER LINE

RIGHT

