

O.D.O.T. DISTRICT 2 SURVEY OFFICE (USE ONLY)

PERSONNEL

REFERENCE NO. B

SHEET 2 OF 13

NOTES MILLER

DATE 5/4/23

ROUTE SR 18

H.C. MILLER

WEATHER FAIR

COUNTY SENECA

R.C. RHOADES

TEMP. 51°

TOWNSHIP LOUDON

DWG BY RHOADES PID 101280

SECTION 8

T 2 N R 13 E

TYPE MONUMENT R.R.SPIKE

~~ON SURFACE~~ - BELOW 5"

OFFSET \varnothing PAVEMENT ON LT : RT
- TO - EDGE PAVEMENT

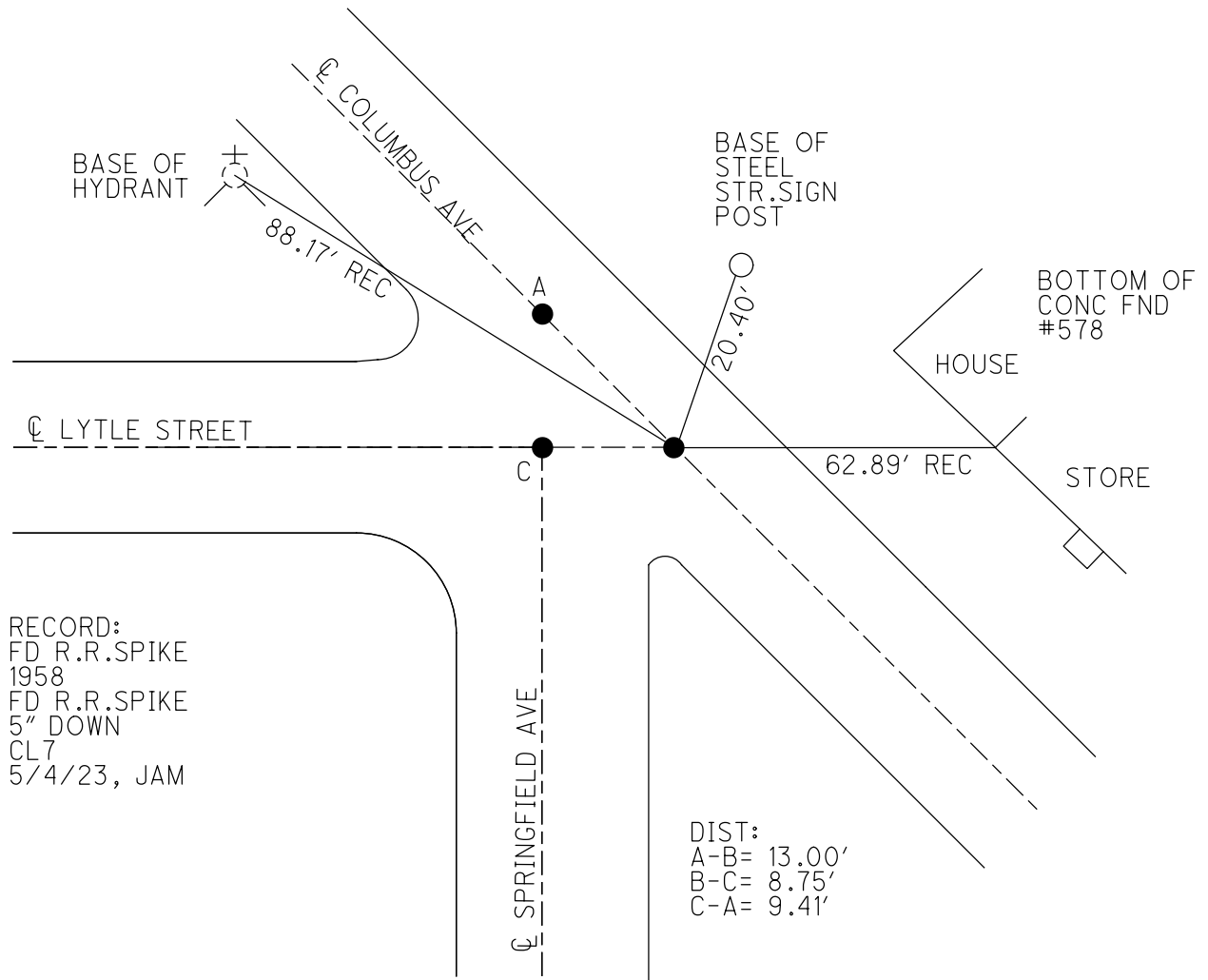
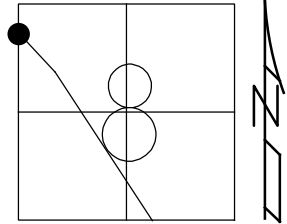
STATION: 82+36

HORIZ.DATUM: SEN LPD

GEOID: NAVD88 2018

GRID: NORTHING: 310125.474

EASTING: 94712.292



RECORD:
 FD R.R.SPIKE
 1958
 FD R.R.SPIKE
 5" DOWN
 CL7
 5/4/23, JAM

DIST:
 A-B= 13.00'
 B-C= 8.75'
 C-A= 9.41'

PERSONNEL TITLE PERSONNEL TITLE

Hank

COUNTY Seneca

DATE 4-16-58

S. R. #18

WEATHER Fair

SEC. Fostoria (Pt.)

TEMP. 72

DESCRIPTION

LEFT

CENTER LINE

RIGHT

JOB NO. _____



P.I. 82+81.04

$\Delta = 10-19^\circ$ Rt

E = 4.54'

T = 97' ±

Tang = split Pmt at each End of curved curb.

P.I. Determined from \pm of existing Pmt both direction

P.I. Ties 36" Maple E. 20.78'

~~30" Maple~~
Fire Hydrant S. 41.55'

Power Pole W 30.80'

PERSONNEL	TITLE	PERSONNEL	TITLE
R. Darr			
R. Zeyen			
H. Ward			

COUNTY Seneca (Fostoria) DATE 2-20-58

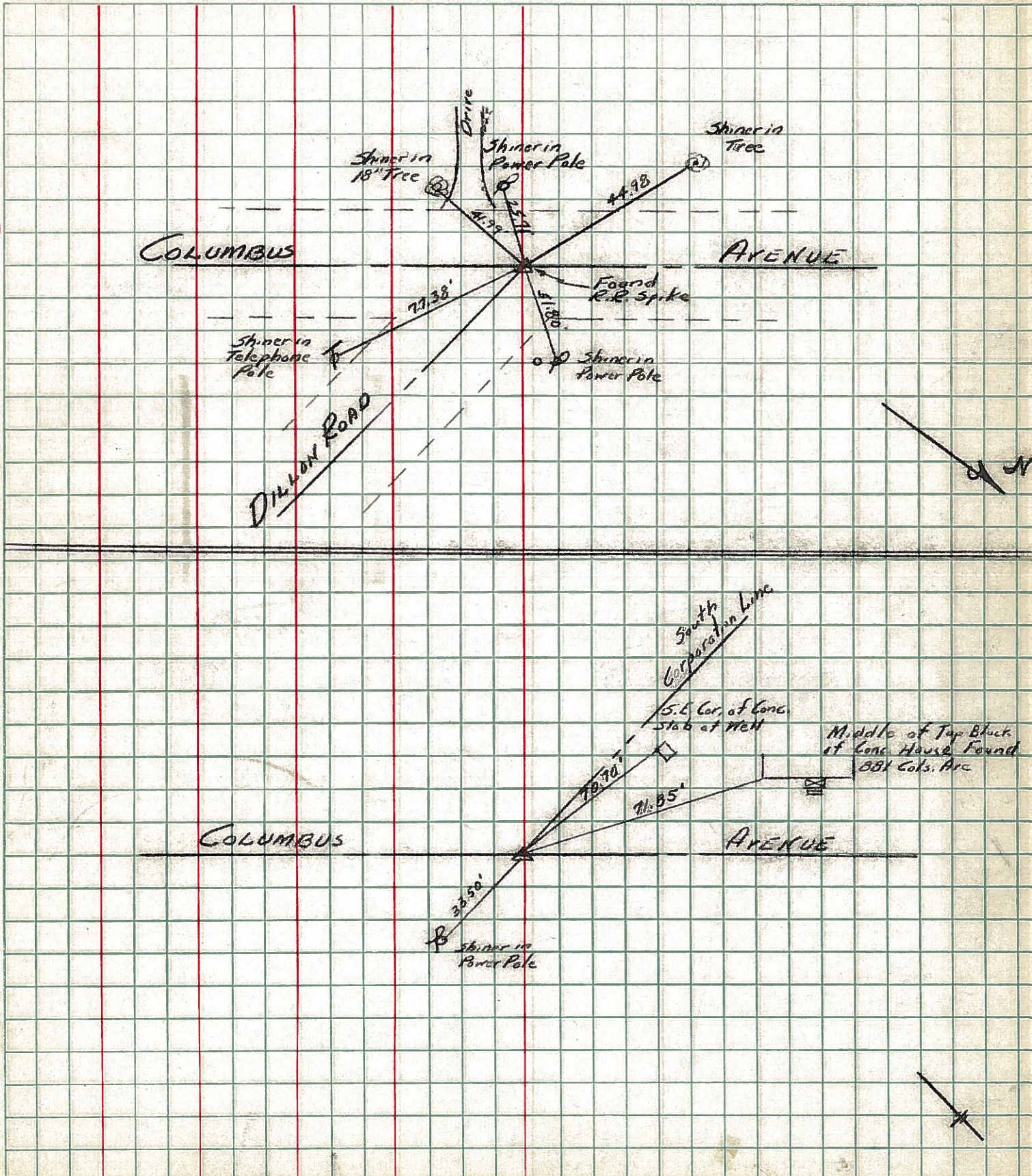
S. R. 18 WEATHER Clear & Mild

SEC. _____ TEMP. +25°

DESCRIPTION Ties for points on Columbus Ave. from Lytle St. to S.E. JOB NO. _____

LEFT CENTER LINE RIGHT

①



PERSONNEL TITLE PERSONNEL TITLE

R. Darr

H. Ward

R. Zeyen

COUNTY Seneca (Fostoria)

DATE 2-14-58

S. R. 18

WEATHER Cloudy & Cold

SEC. _____

TEMP. +26°

DESCRIPTION Ties for points on Columbus Ave From Lytle St. SE.

JOB NO. _____

LEFT

CENTER LINE

RIGHT

