

PERSONNEL TITLE PERSONNEL TITLE

Hank

COUNTY Seneca

DATE 4-16-58

S. R. #18

WEATHER Fair

SEC. Fostoria (Pt.)

TEMP. 72

DESCRIPTION

LEFT

CENTER LINE

RIGHT

JOB NO.



P.I. 82+81.04

$\Delta = 10-19$ Rt

$E = 4.54$

$T = 97' \pm$

Tang = split Pmt at each End of curved curb.

P.I. Determined from \pm of existing Pmt both direction

P.I. Ties 36" Maple E. 20.78'

Fire Hydrant S. 41.55'

Power Pole W 30.80'

PERSONNEL	TITLE	PERSONNEL	TITLE
R. Darr			
R. Zeyen			
H. Ward			

COUNTY Seneca (Fostoria) DATE 2-20-58

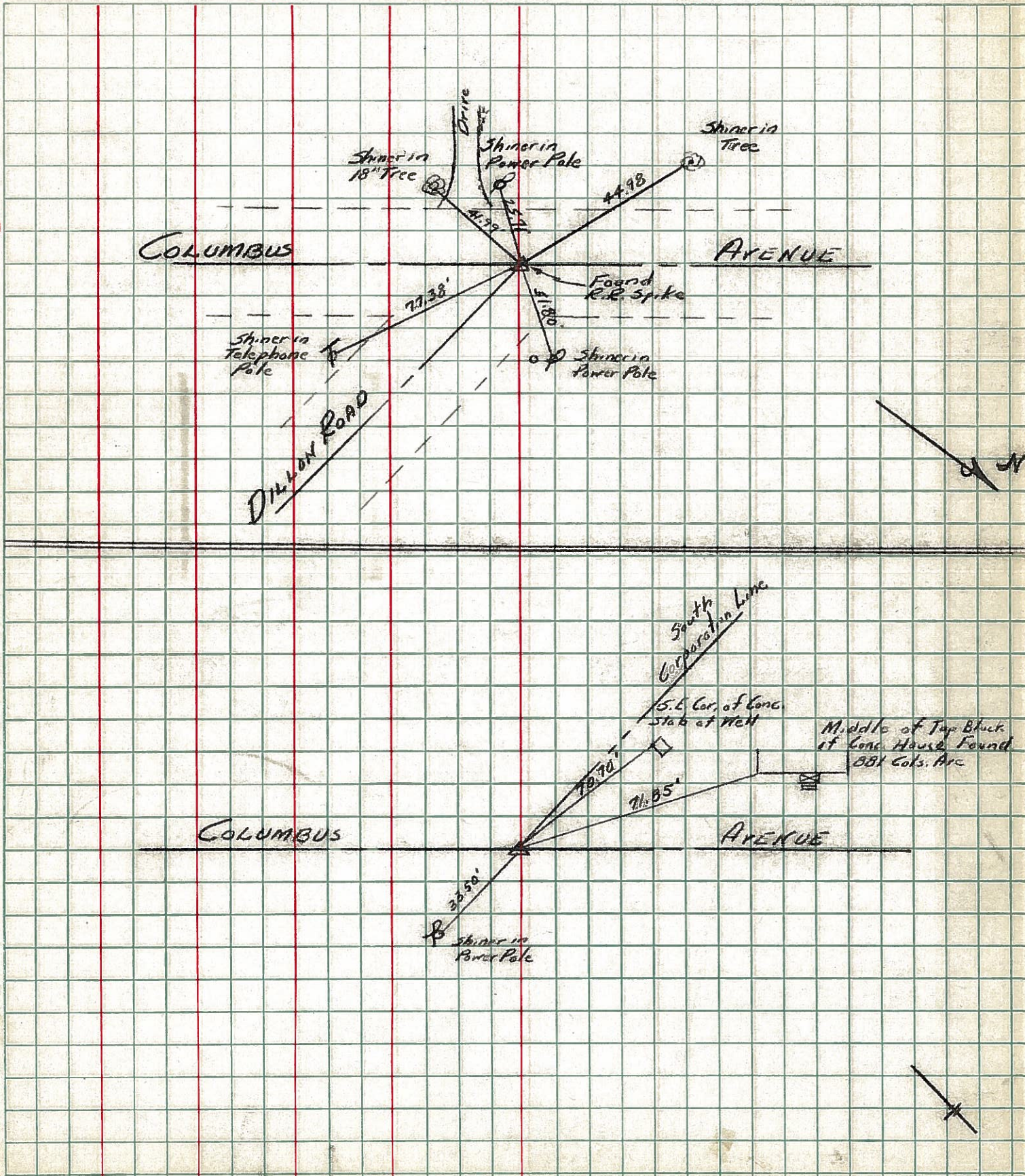
S. R. 18 WEATHER Clear & Mild

SEC. _____ TEMP. +25°

DESCRIPTION Ties for points on Columbus Ave. from Lytle St. to S.E. JOB NO. _____

LEFT CENTER LINE RIGHT

①



PERSONNEL TITLE PERSONNEL TITLE

R. Darr

H. Ward

R. Zeyen

COUNTY Seneca (Fostoria) DATE 2-14-58

S. R. 18

WEATHER Cloudy & Cold

SEC. _____

TEMP. +26°

DESCRIPTION Ties for points on Columbus Ave From Lytle St. SE.

JOB NO. _____

LEFT

CENTER LINE

RIGHT

