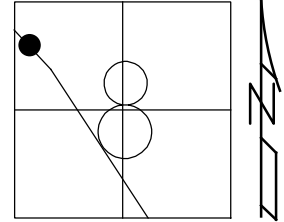


O.D.O.T. DISTRICT 2 SURVEY OFFICE (USE ONLY)

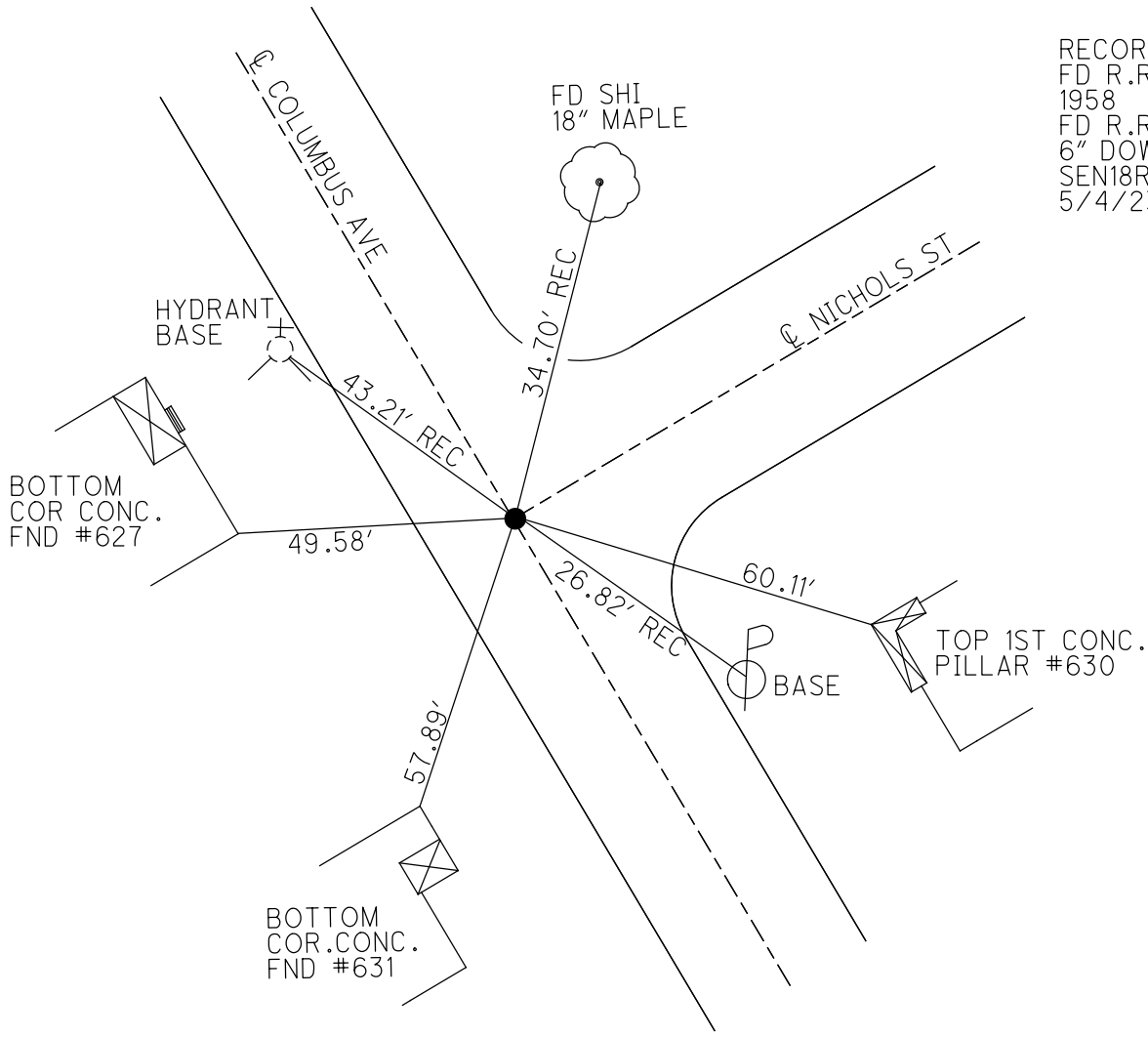
PERSONNEL _____ REFERENCE NO. E SHEET 5 OF 13
 NOTES MILLER DATE 5/4/23 ROUTE SR 18
 H.C. MILLER WEATHER FAIR COUNTY SENECA
 R.C. RHOADES TEMP. 51° TOWNSHIP LOUDON
 DWG BY RHOADES PID 101280 SECTION 8
 T 2 N R 13 E

TYPE MONUMENT R.R.SPIKE
~~ON SURFACE~~ - BELOW 6"
 OFFSET \odot PAVEMENT ON _____ LT : RT
 _____ TO _____ EDGE PAVEMENT
 STATION: 86+59



HORIZ.DATUM: SEN LPD GEOID: NAVD88 2018
 GRID: NORTHING: 309805.329 EASTING: 95010.024

RECORD:
 FD R.R.SPIKE
 1958
 FD R.R.SPIKE
 6" DOWN
 SEN18REF0.15
 5/4/23, JAM



PERSONNEL TITLE PERSONNEL TITLE

R. Darr

H. Ward

R. Zeyen

COUNTY Seneca (Fostoria)

DATE 2-20-58

S. R. 18

WEATHER Clear & Cold

SEC. _____

TEMP. +25°

DESCRIPTION

Ties for points on Columbus Ave. from Lytle St. to S.E.

JOB NO. _____

LEFT

CENTER LINE

RIGHT

