

O.D.O.T. DISTRICT 2 SURVEY OFFICE (USE ONLY)

PERSONNEL _____ REFERENCE NO. F SHEET 6 OF 13
 NOTES MILLER DATE 5/4/23 ROUTE SR 18
 H.C. MILLER WEATHER FAIR COUNTY SENECA
 R.C. RHOADES TEMP. 51° TOWNSHIP LOUDON
 DWG BY RHOADES PID 101280 SECTION 8
 T 2 N R 13 E

TYPE MONUMENT R.R.SPIKE

~~ON SURFACE~~ - BELOW 6"

OFFSET Q PAVEMENT ON LT : RT
- TO - EDGE PAVEMENT

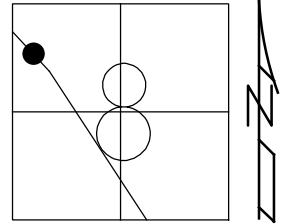
STATION: 89+76

HORZ.DATUM: SEN LPD

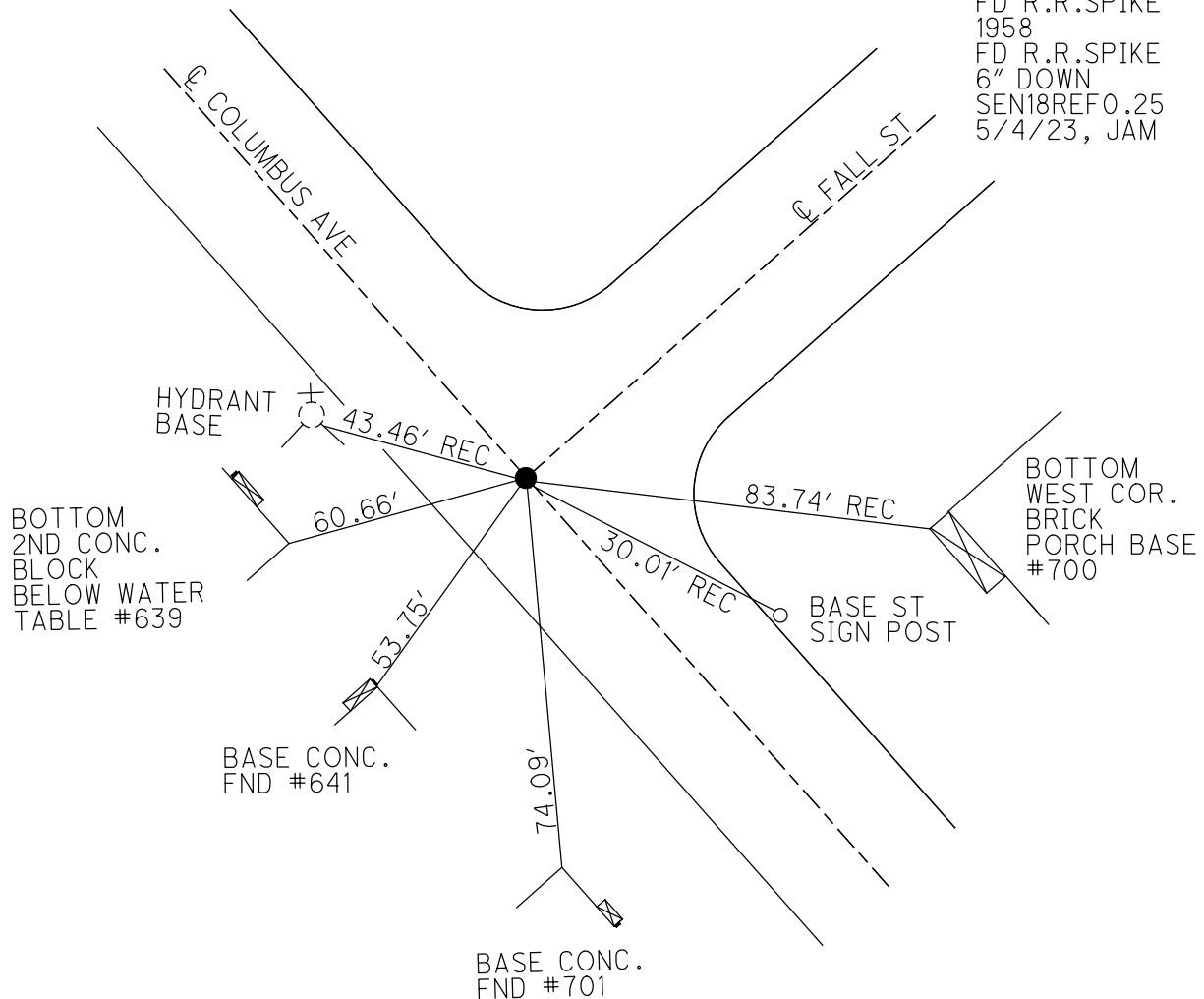
GEOID: NAVD88 2018

GRID: NORTHING: 309578.287

EASTING: 95221.255



RECORD:
 FD R.R.SPIKE
 1958
 FD R.R.SPIKE
 6" DOWN
 SEN18REF0.25
 5/4/23, JAM



PERSONNEL TITLE PERSONNEL TITLE

R. Darr

H. Ward

R. Zeyen

COUNTY Seneca (Fostoria)

DATE 2-20-58

S. R. 18

WEATHER Clear & Cold

SEC. _____

TEMP. +25°

DESCRIPTION

Ties for points on Columbus Ave. from Lytle St. to S.E.

JOB NO. _____

LEFT

CENTER LINE

RIGHT

