

O.D.O.T. DISTRICT 2 SURVEY OFFICE (USE ONLY)

PERSONNEL \_\_\_\_\_ REFERENCE NO. 4 SHEET 5 OF 6

NOTES BARNHISEL DATE 7/10/97 ROUTE SR 18  
 H.C. CANTERBURY WEATHER CLOUDY COUNTY SENECA  
 R.C. WEAVER TEMP. 70° TOWNSHIP LOUDON  
ROUSOS SECTION 8

DWG BY NIESE PID \_\_\_\_\_ T 2 N R 13 E

TYPE MONUMENT P.K./WASHER

ON SURFACE - ~~BELOW~~ ON

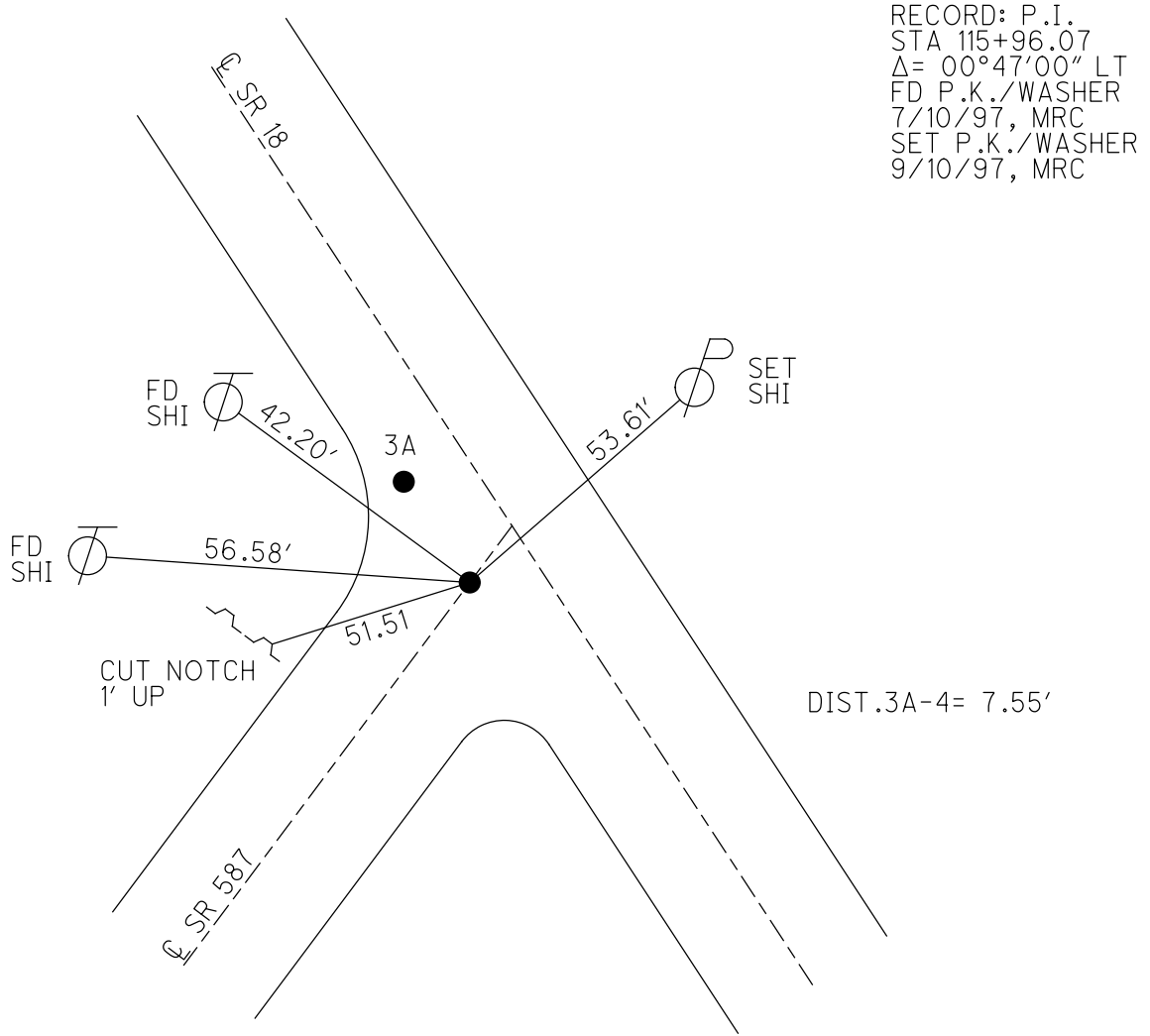
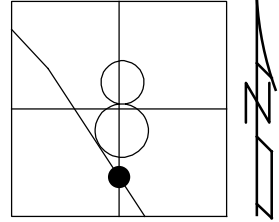
OFFSET  $\odot$  PAVEMENT 8.3' ~~LF~~ : RT

3.7' TO RT EDGE PAVEMENT

STATION: 128+22.18

HORIZ.DATUM: \_\_\_\_\_ GEOID: \_\_\_\_\_

GRID: NORTHING: \_\_\_\_\_ EASTING: \_\_\_\_\_



RECORD: P.I.  
 STA 115+96.07  
 $\Delta = 00^\circ 47' 00''$  LT  
 FD P.K./WASHER  
 7/10/97, MRC  
 SET P.K./WASHER  
 9/10/97, MRC

# O.D.O.T. DISTRICT 2 SURVEY OFFICE

PERSONNEL

REFERENCE NO. 4

SHEET 4 OF 22

NOTES BARNHISEL

H.C. CANTERBURY

DATE 7/10/97

ROUTE #18

R.C. WEAVER

WEATHER CLOUDY

COUNTY SENECA

Rousos

TEMP. +70°

TOWNSHIP LOUDON

DRAWING CANTERBURY

SECTION 8

T Z N R 13 E

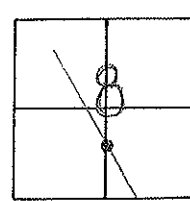
TYPE MONUMENT P.K. & WASHERS

ON SURFACE - ~~BELOW~~ SURFACE

~~LEFT - & PAV'T. - RIGHT~~ 8.3 RIGHT

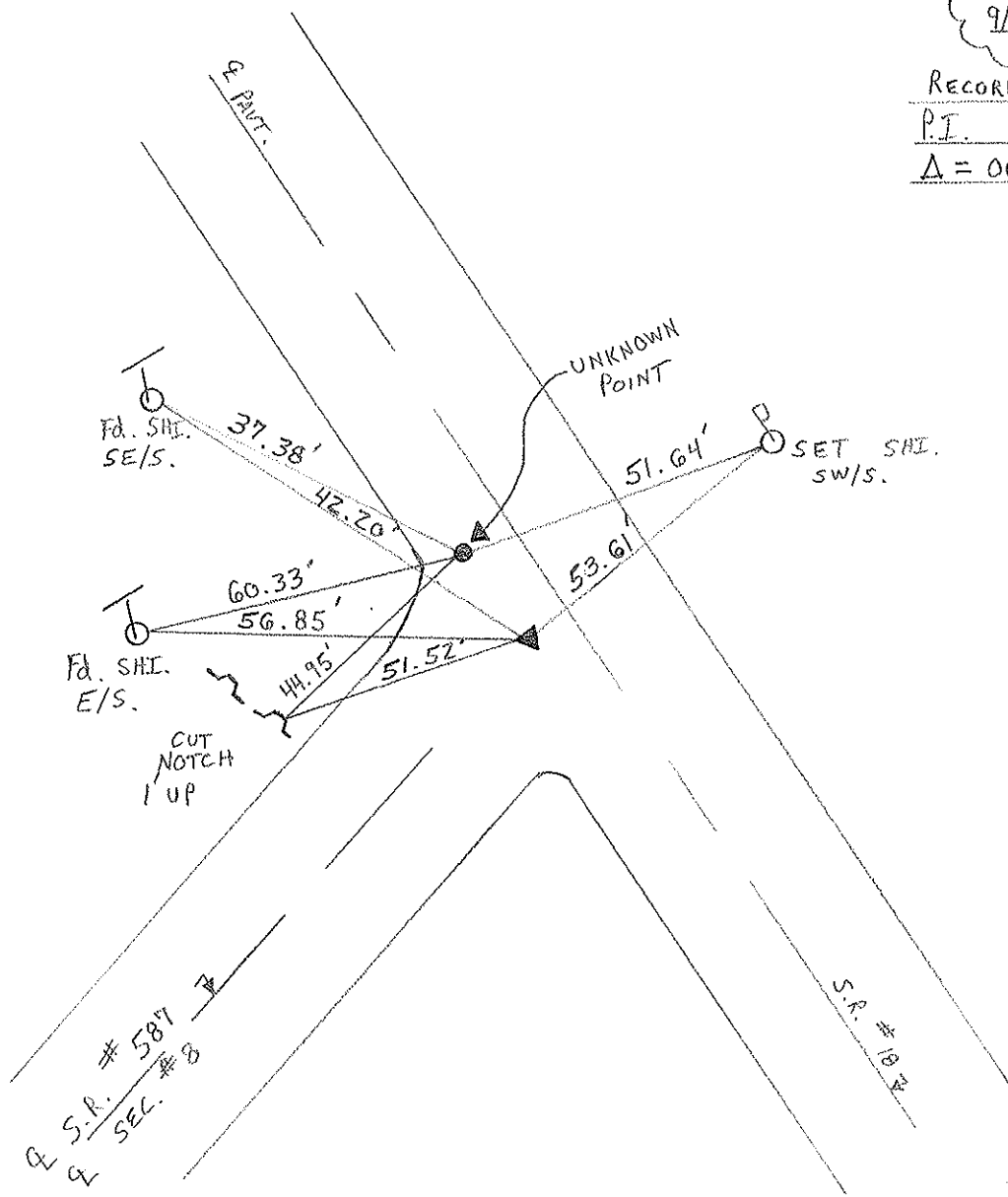
3.7 TO RT EDGE PAVEMENT

S.L.M. 3+908.2



RESET P.K. & WASHERS  
9/10/97 M.R.C.

RECORD:  
P.I. 115+96.07  
 $\Delta = 00^{\circ} 47' 00''$  LT.



# O.D.O.T. DISTRICT 2 SURVEY OFFICE

PERSONNEL

REFERENCE NO. 4

SHEET 4 OF     

NOTES CROWIN

H.C. RIPPLE

R.C. BARBOUR

GEYMAN

DATE 01/18/90

WEATHER OVERCAST - MIST

TEMP. 38°

ROUTE #18

COUNTY SENECA

TOWNSHIP LODDON

SECTION 8

T 2 N R 13 E

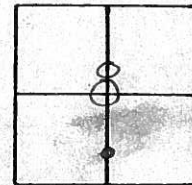
TYPE MONUMENT R.R SPIKE

ON SURFACE - BELOW 2'±

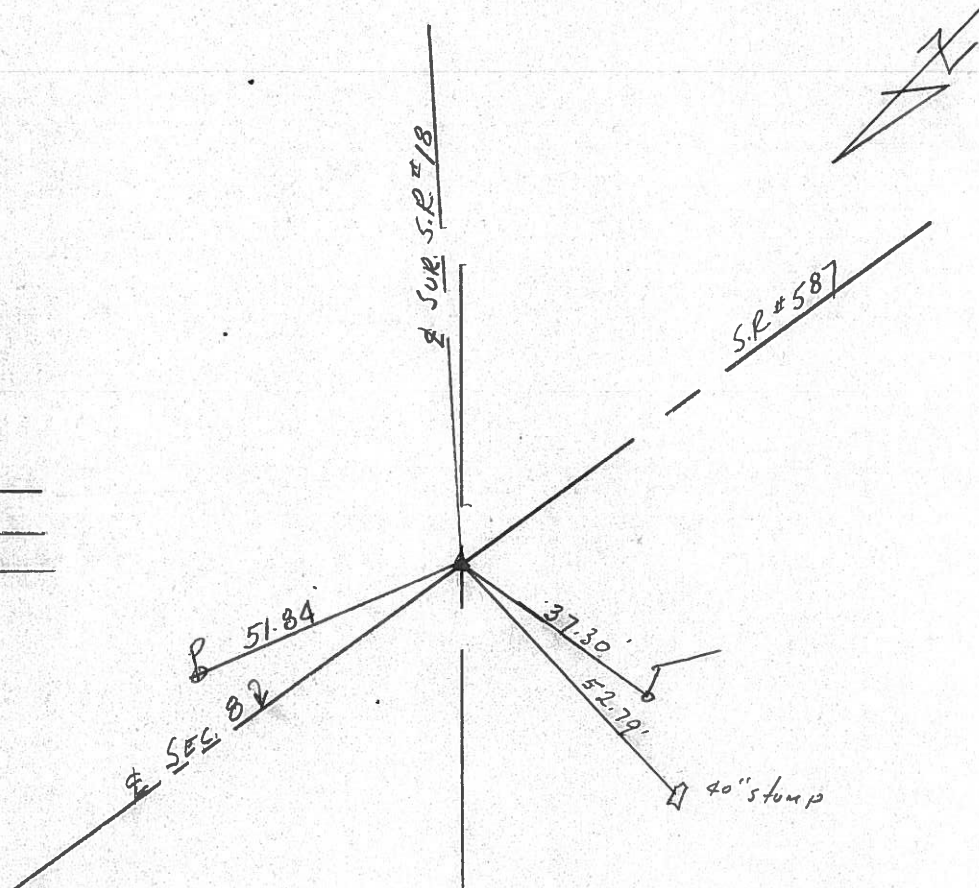
LEFT - ± PAV'T. - RIGHT 8.7±

     TO      EDGE PAVEMENT

S.L.M.     



P.I. SURVEY  
115+96.0±  
A = 00°47'00" Lt.





PERSONNEL TITLE PERSONNEL TITLE

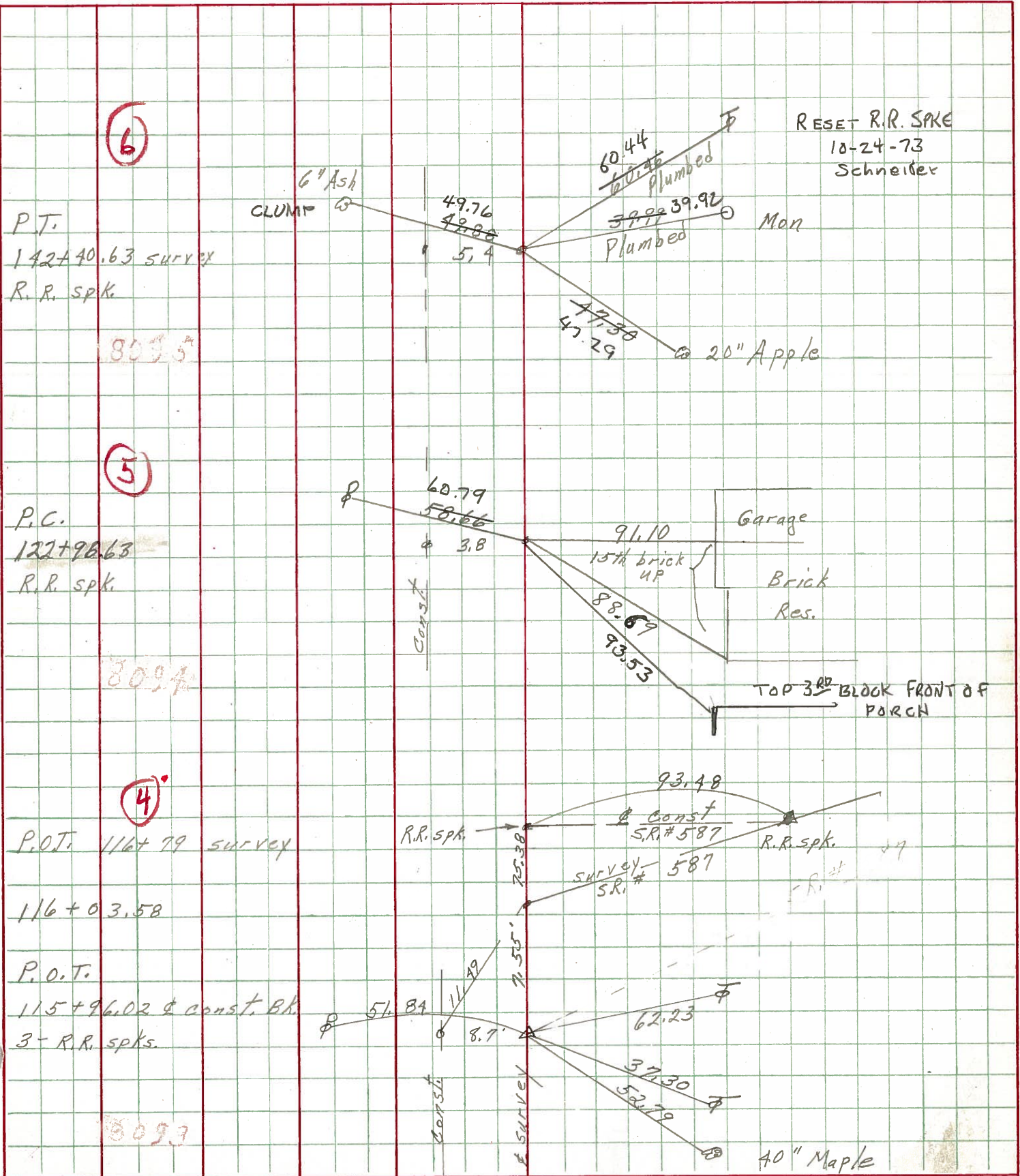
COUNTY Seneca DATE 10-16-68

S. R. 18 WEATHER Fair - windy

SEC. Fostoria to Bascom TEMP. 70°

DESCRIPTION Ties for control points JOB NO.

LEFT CENTER LINE RIGHT



PERSONNEL TITLE PERSONNEL TITLE

Hsh  
Cronin  
Ripple

Leemaster  
Lahr

COUNTY Seneca

DATE Nov. 12, '58

S. R. #18 Foster's - Bascom Rd

WEATHER Clear

SEC. Sen.-18-(1.79-8.60)

TEMP. 50°

DESCRIPTION

Control Point ties - Survey & Const.

JOB NO.

LEFT

CENTER LINE

Survey

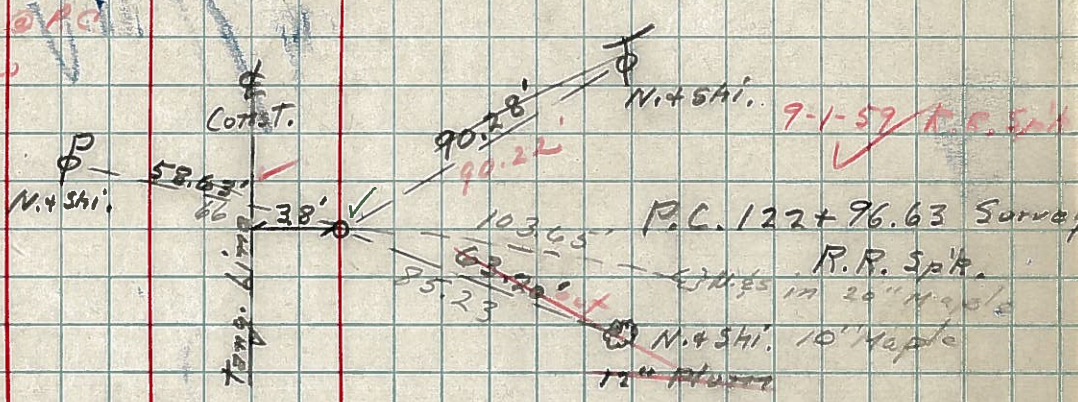
RIGHT

5

9/27/65

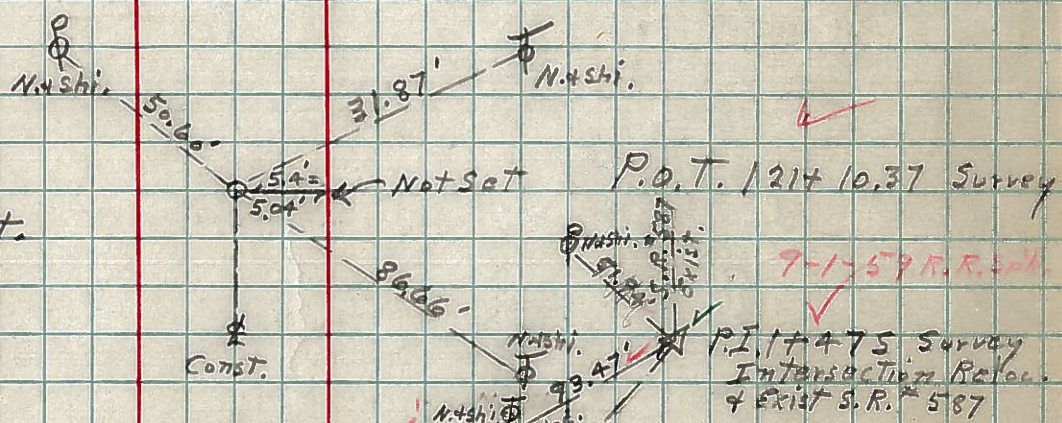
Found. R.R. Spk & Sur. @ P.C.  
Checked by Cronin & Crew

Const. Curve



9-1-59 R.R. Spk

T.S. 121+09.17 Plam =  
T.S. 121+10.37 Const.  
P.K. Nail + Shi.



Const. Tang.

4

9-1-59 R.R. Spk.

P.O.T. 115+96.02 Const. Bk =  
115+96.07 Const. Hhd.  
P.K. Nail + Shi.

