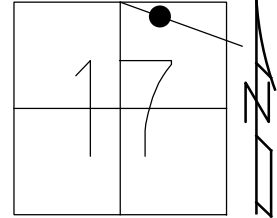


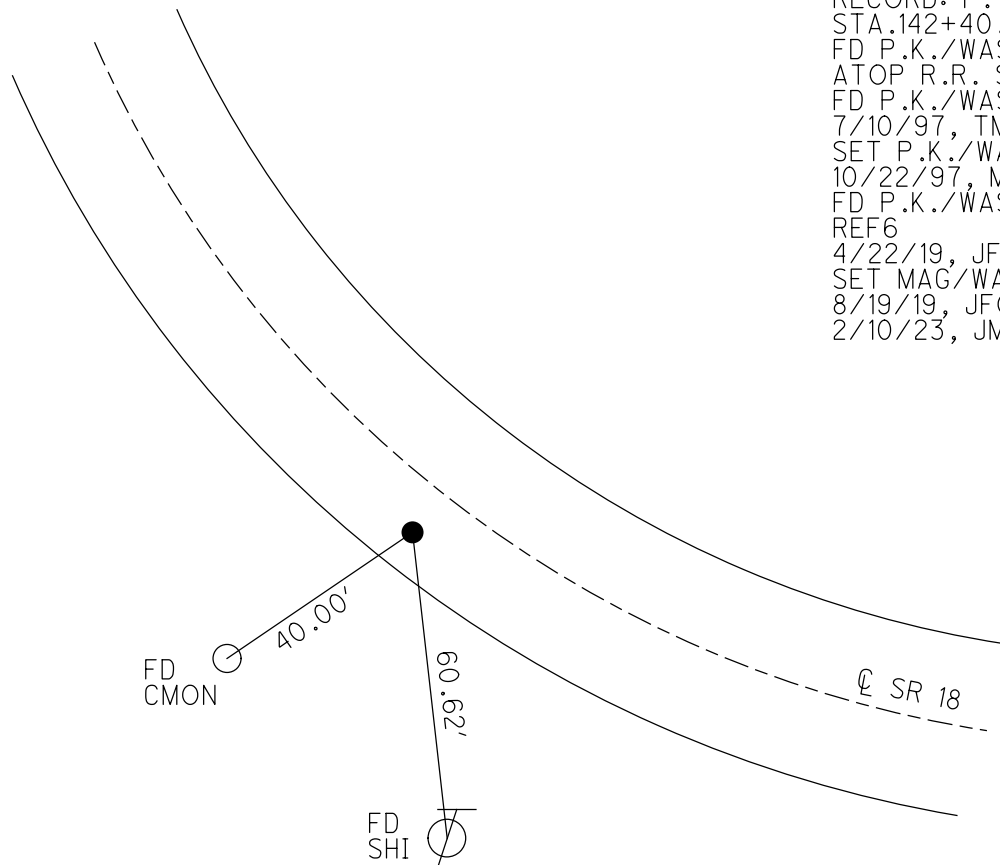
O.D.O.T. DISTRICT 2 SURVEY OFFICE (USE ONLY)

PERSONNEL _____ REFERENCE NO. 6 SHEET 1 OF 48
 NOTES RHOADES DATE 8/19/19 ROUTE SR 18
 H.C. O'DONNELL WEATHER SUNNY COUNTY SENECA
 R.C. AUBLE TEMP. 70° TOWNSHIP LOUDON
 DWG BY NIESE PID NO PID SECTION 17
 T 2 N R 13 E

TYPE MONUMENT MAG/WASHER
 ON SURFACE - ~~BELOW~~ ON
 OFFSET \varnothing PAVEMENT 6.5' \pm : RT
5.6' TO RT EDGE PAVEMENT
 STATION: 142+40.63



HORZ.DATUM: NAD83(2011) GEOID: 2012A
 GRID: NORTHING: 536454.019 EASTING: 1724811.195

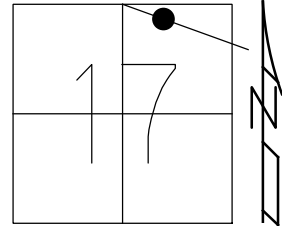


RECORD: P.T.
 STA.142+40.63
 FD P.K./WASHER
 ATOP R.R. SPIKE
 FD P.K./WASHER
 7/10/97, TMR
 SET P.K./WASHER
 10/22/97, MB
 FD P.K./WASHER
 REF6
 4/22/19, JFO
 SET MAG/WASHER
 8/19/19, JFO
 2/10/23, JMR

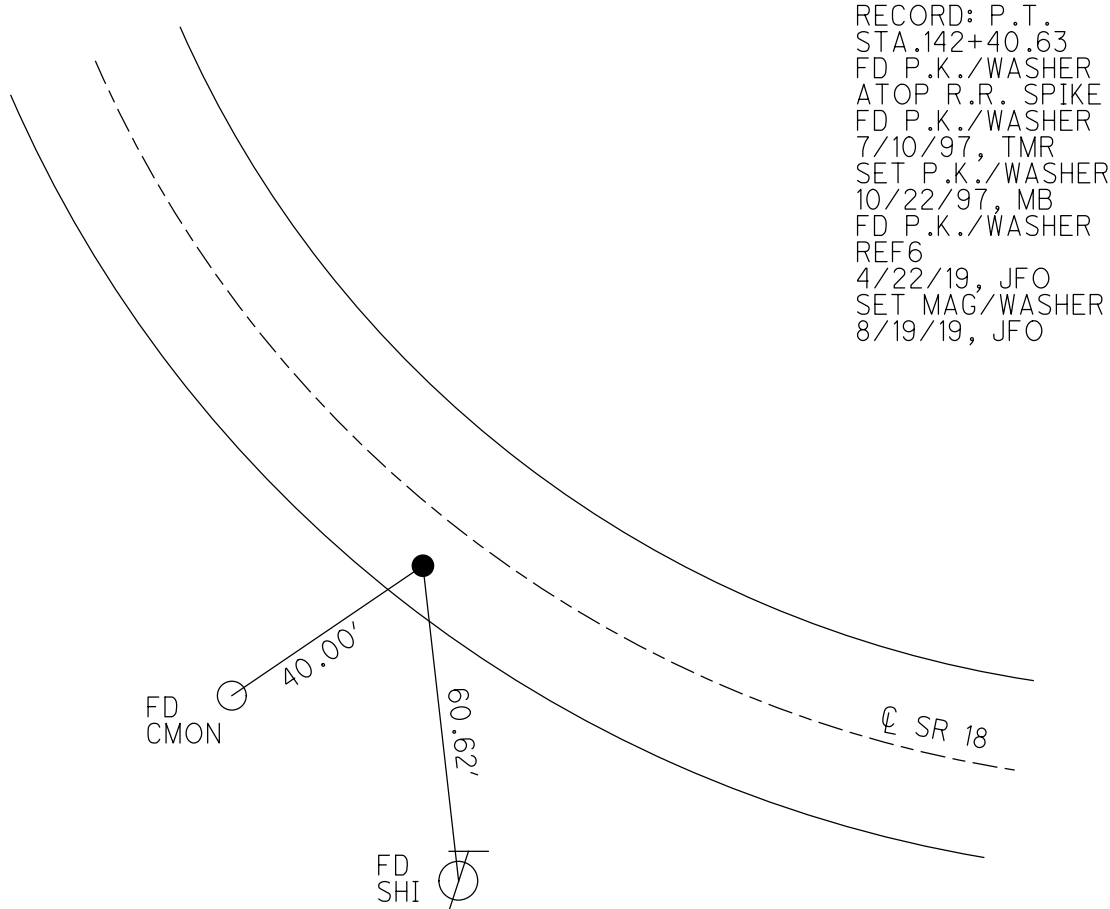
O.D.O.T. DISTRICT 2 SURVEY OFFICE (USE ONLY)

PERSONNEL _____ REFERENCE NO. 6 SHEET 1 OF 48
 NOTES RHOADES DATE 8/19/19 ROUTE SR 18
 H.C. O'DONNELL WEATHER SUNNY COUNTY SENECA
 R.C. AUBLE TEMP. 70° TOWNSHIP LOUDON
 SECTION 17
 DWG BY NIESE PID NO PID T 2 N R 13 E

TYPE MONUMENT MAG/WASHER
 ON SURFACE - ~~BELOW~~ ON
 OFFSET C PAVEMENT 6.5' RT : RT
5.6' TO RT EDGE PAVEMENT
 STATION: 142+40.63



HORZ.DATUM: NAD83(2011) GEOID: 2012A
 GRID: NORTHING: 536454.019 EASTING: 1724811.195



RECORD: P.T.
 STA.142+40.63
 FD P.K./WASHER
 ATOP R.R. SPIKE
 FD P.K./WASHER
 7/10/97, TMR
 SET P.K./WASHER
 10/22/97, MB
 FD P.K./WASHER
 REF6
 4/22/19, JFO
 SET MAG/WASHER
 8/19/19, JFO

O.D.O.T. DISTRICT 2 SURVEY OFFICE

PERSONNEL

REFERENCE NO. 6

SHEET 6 OF 22

NOTES BARNHISEL

H.C. CANTERBURY

DATE 7-10-99

ROUTE 18

R.C. WEAVER

WEATHER SUNNY

COUNTY SENECA

P Rousar

TEMP. +75°

TOWNSHIP LOUIDON

DRAWN BY Rousar

SECTION 17

T2 N R13 E

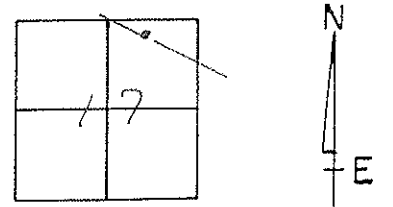
TYPE MONUMENT PK WASHER

ON SURFACE - ~~BELOW~~ SURFACE

LEFT - & PAV'T. - RIGHT 6.5' RT

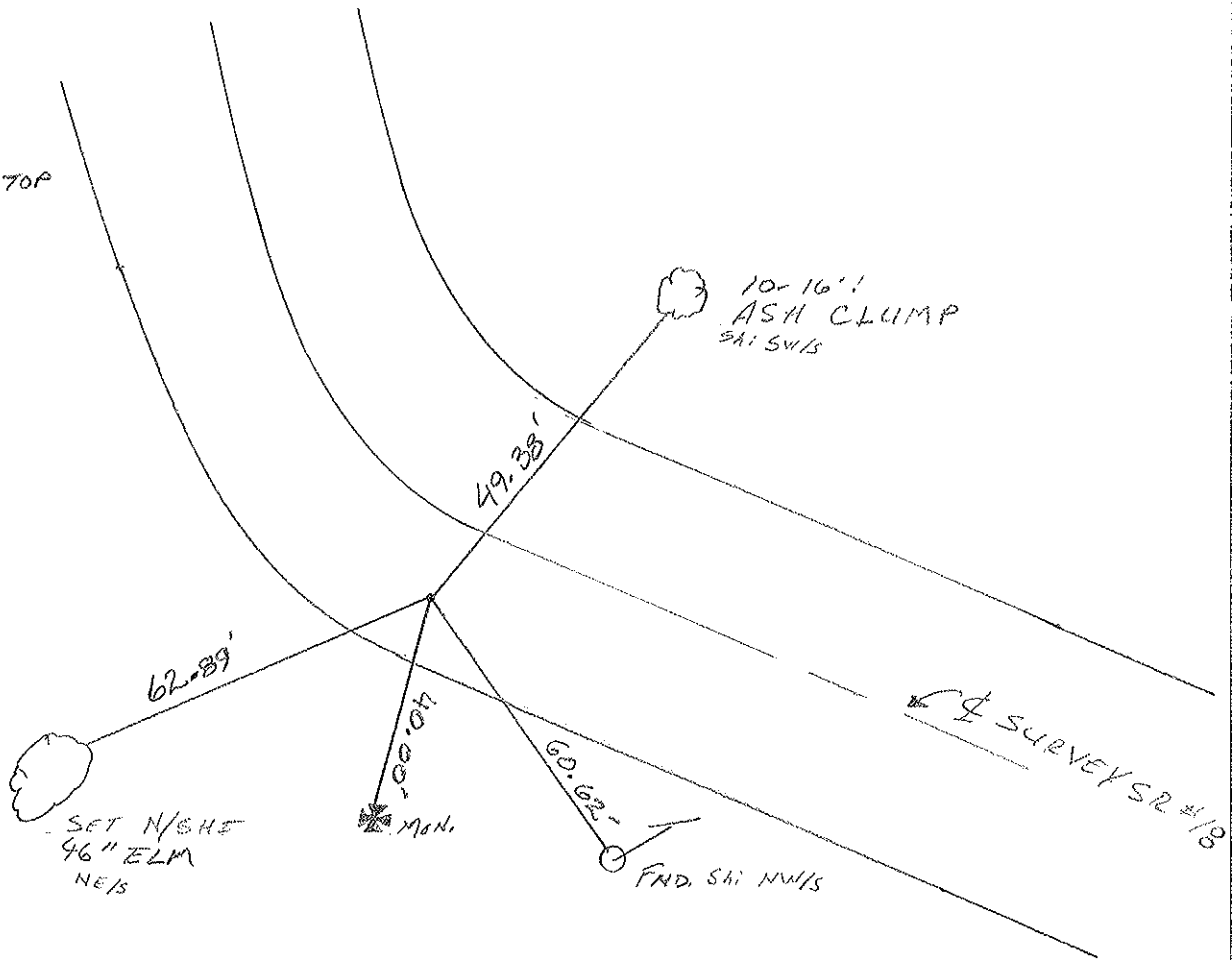
5.6' TO RT EDGE PAVEMENT

S.L.M. 41717.1 SLK



RESET PK WASHER
10-22-99
M.B.

P.T.
142 + 40.03
PK WASHER ATOP
R.R. SPIKE



← SURVEY SR #18

O.D.O.T. DISTRICT 2 SURVEY OFFICE

PERSONNEL _____

REFERENCE NO. 6

SHEET 6 OF _____

NOTES CRONIN (DRAW)

DRAWN 1/16/90

H.C. RIPPLE

DATE 11/12/87

R.C. BARBOUR } MEAS.

WEATHER OVERCAST

GEYMAN

TEMP. 39°

ROUTE #18

COUNTY SENECA

TOWNSHIP LOUDBON

SECTION 17

T2 N R 13 E

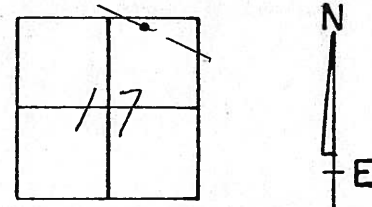
TYPE MONUMENT P.K. & WASHER

ON SURFACE - BELOW _____

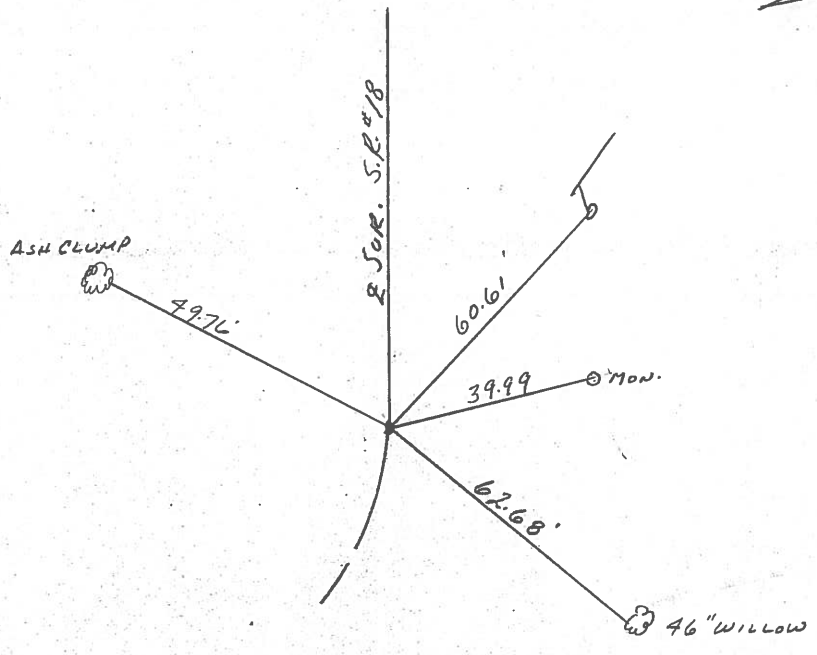
LEFT - € PAV'T. - RIGHT 6.0' ±

TO _____ EDGE PAVEMENT

S.L.M. _____



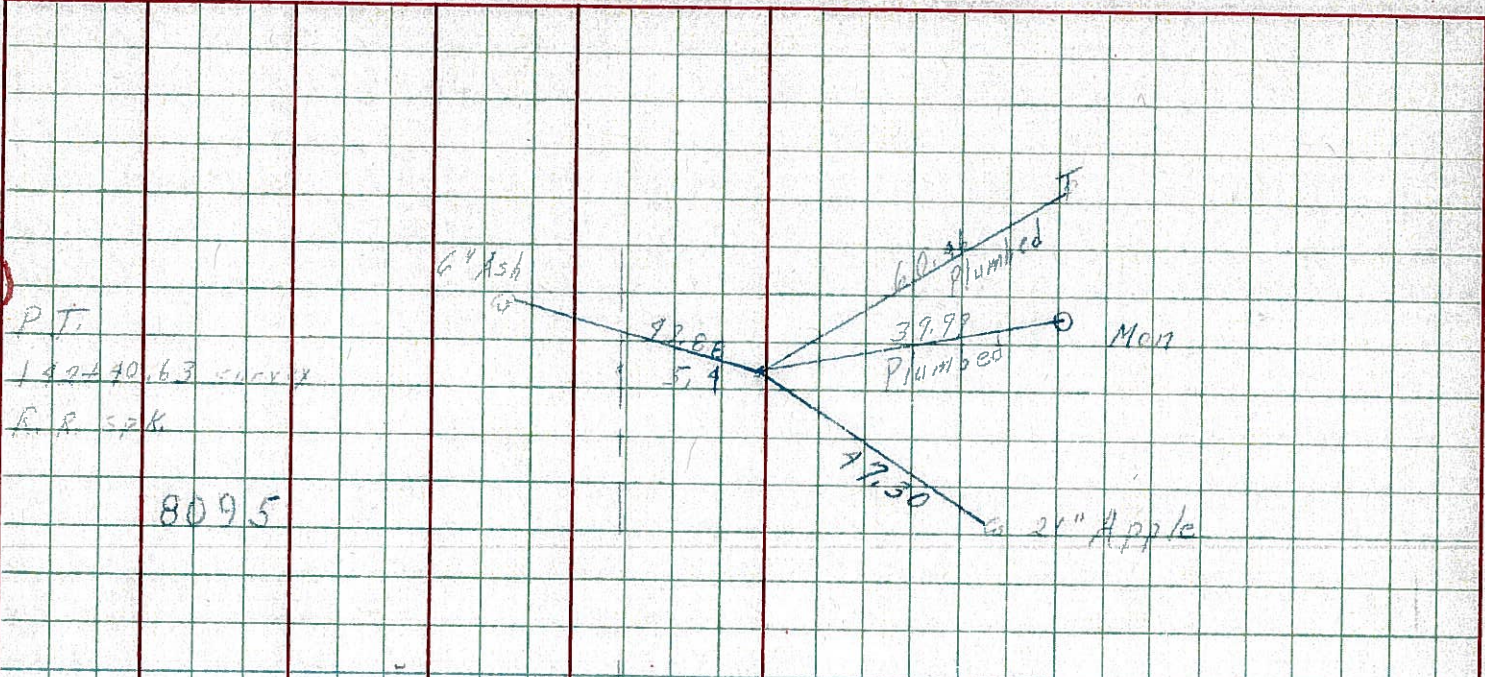
P.T.
142 + 40.63
P.K. & WASHER ATOP
P.R. SPIKE



PERSONNEL	TITLE	PERSONNEL	TITLE	COUNTY	DATE
Schmidler				Garrett	11-11-65
Morgan				S. R. 18	WEATHER Fair - windy
Bachman				SEC. Fortuna to Baseline	TEMP 70°
Putts					

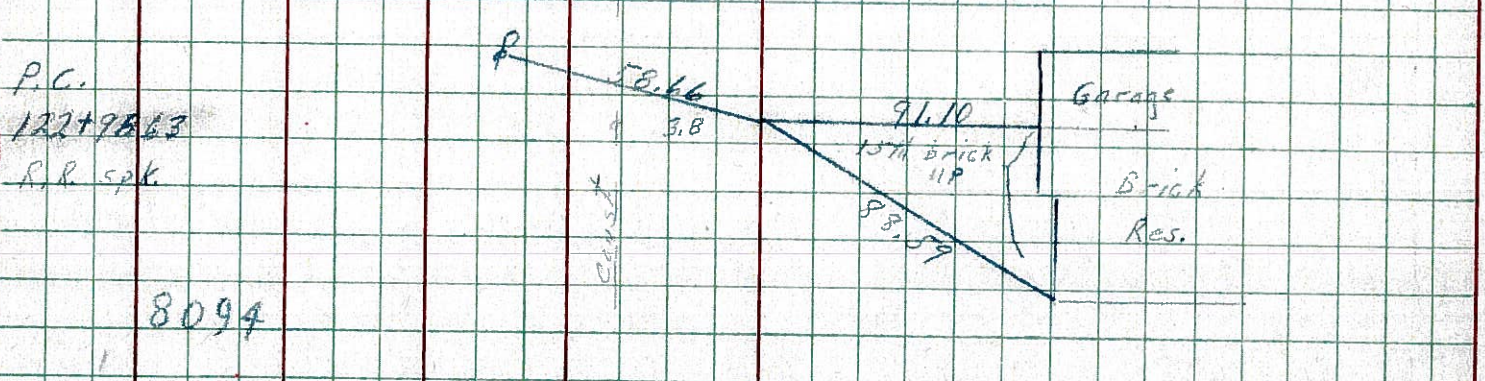
DESCRIPTION *Ties from control points* LEFT CENTER LINE RIGHT JOB NO.

6



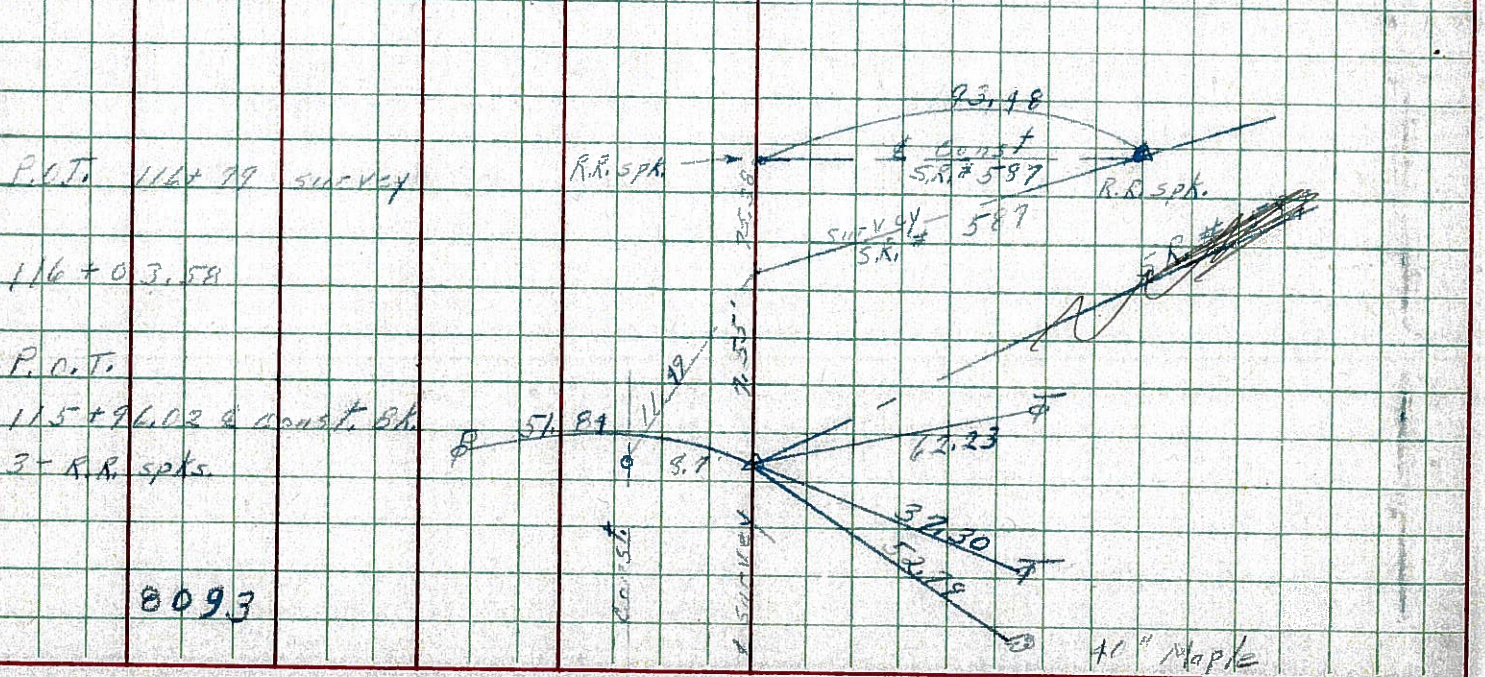
P.T.
142+70.63 survey
R.R. spk.
8095

5



P.C.
122+98.63
R.R. spk.
8094

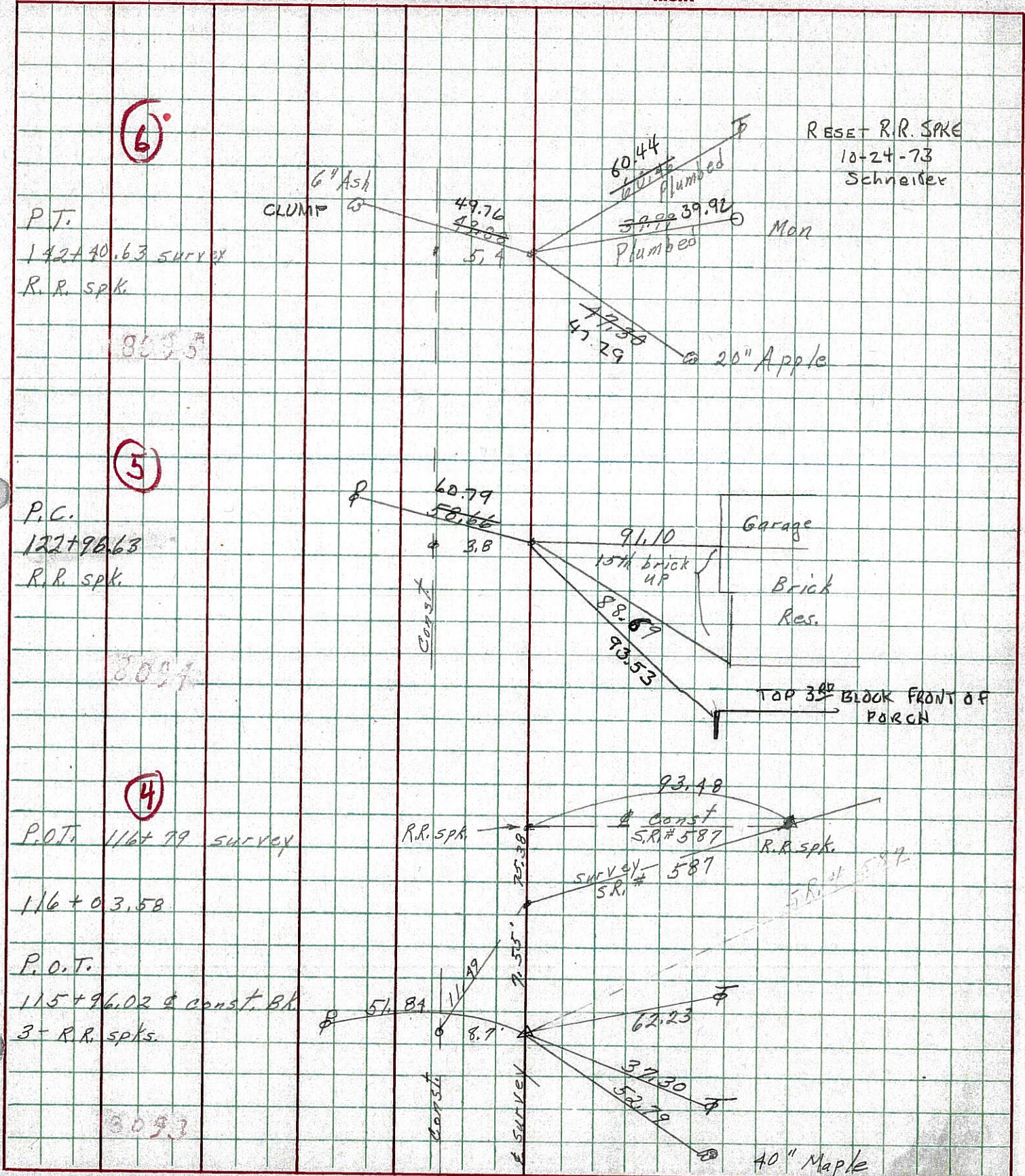
4



P.O.T. 116+79 survey
116+0.3.58
P.O.T.
115+96.02 & const. 8k
3 - R.R. spks.
8093

PERSONNEL	TITLE	PERSONNEL	TITLE	COUNTY	DATE
Schneider				Seneca	10-16-68
Mosser				S. R. 18	WEATHER Fair-windy
Barbour				SEC. Fostoria to Bascom	TEMP. 70°
Potts					

DESCRIPTION Ties for Control Points



PERSONNEL TITLE PERSONNEL TITLE

COUNTY Seneca

DATE Dec. 3 '58

H. Shi.
Cronin
Leamaster

Lahr
John K.

S. R. #18 Foster's - Buscum Rd. WEATHER Cloudy

SEC. Sen-18-(1.79-8.60) TEMP. 35°

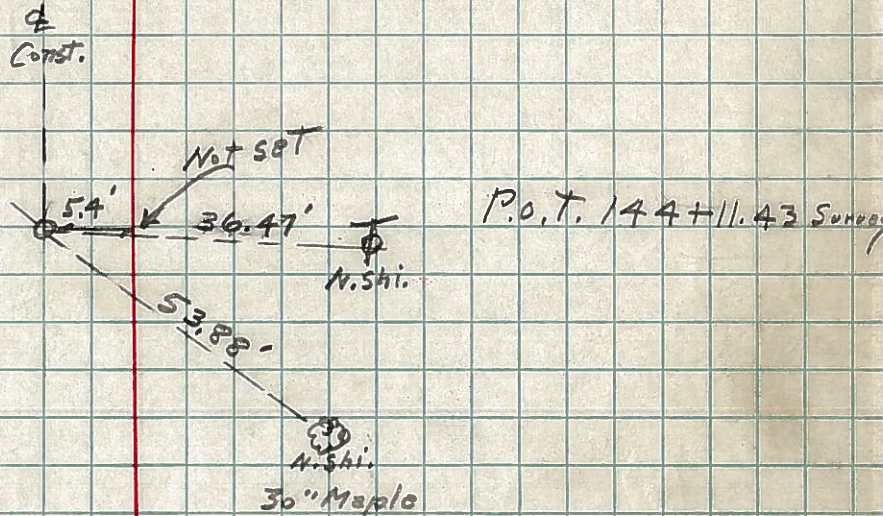
DESCRIPTION Control Point ties - & Survey + Const.

JOB NO. _____

LEFT CENTER LINE Survey RIGHT

✓ 9-1-59 R.R. Spk.

S.T. = 144+05.94 Bk. Plan =
 S.T. = 144+08.76 Bk. & Const.
 Sta. Cg.
 144+08.65 Hhd. Const. & Survey Plan =
 144+11.40 Hhd. Const.
 P. K. Nail & Shi.

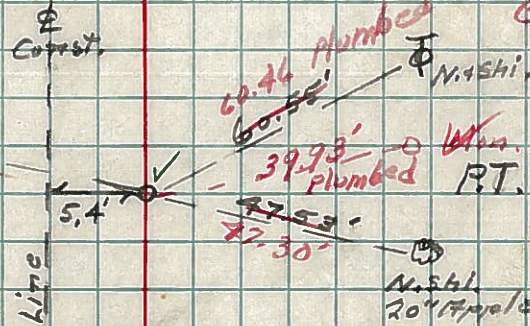


P.O.T. 144+11.43 Survey

Found RR Spk on Top Retied by Crawling Crew 10/29/65

⑥ Const. Curve

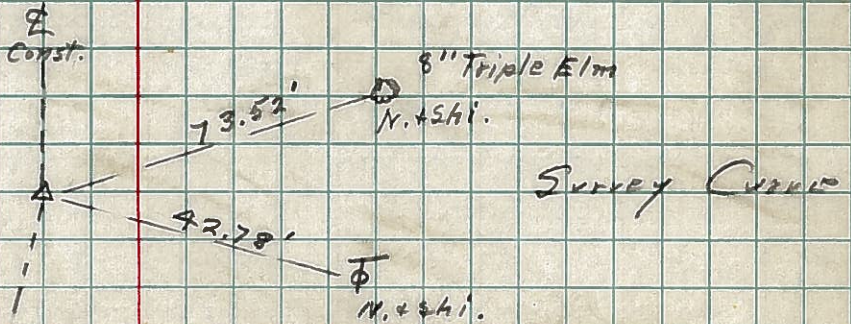
49.99'
50.02'
N. Shi.
6" Maple



9-1-59 R.R. Spk.
RT. 142+40.63 Survey
R.R. Spk.

✓ 9-1-59 R.R. Spk.

⊙ = P.I. Spiral Const.
P. K. Nail & Shi.



Survey Curve