

O.D.O.T. DISTRICT 2 SURVEY OFFICE (USE ONLY)

PERSONNEL \_\_\_\_\_

REFERENCE NO. 9

SHEET 4 OF 48

NOTES AUBLE

DATE 9/1/21

ROUTE SR 18

H.C. NIESE

WEATHER WINDY

COUNTY SENECA

R.C. AUBLE

TEMP. 72°

TOWNSHIP LOUDON

SECTION 16

DWG BY RHOADES

PID PVTRAIN

T 2 N R 13 E

TYPE MONUMENT P.K./WASHER

ON SURFACE - ~~BELOW~~ ON

OFFSET ☉ PAVEMENT 4.3' ± : RT

7.0' TO RT EDGE PAVEMENT

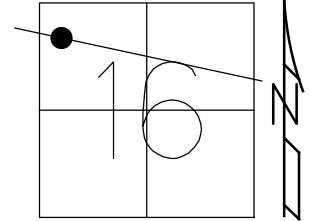
STATION: 162+24.55

HORZ.DATUM: NAD83(2011)

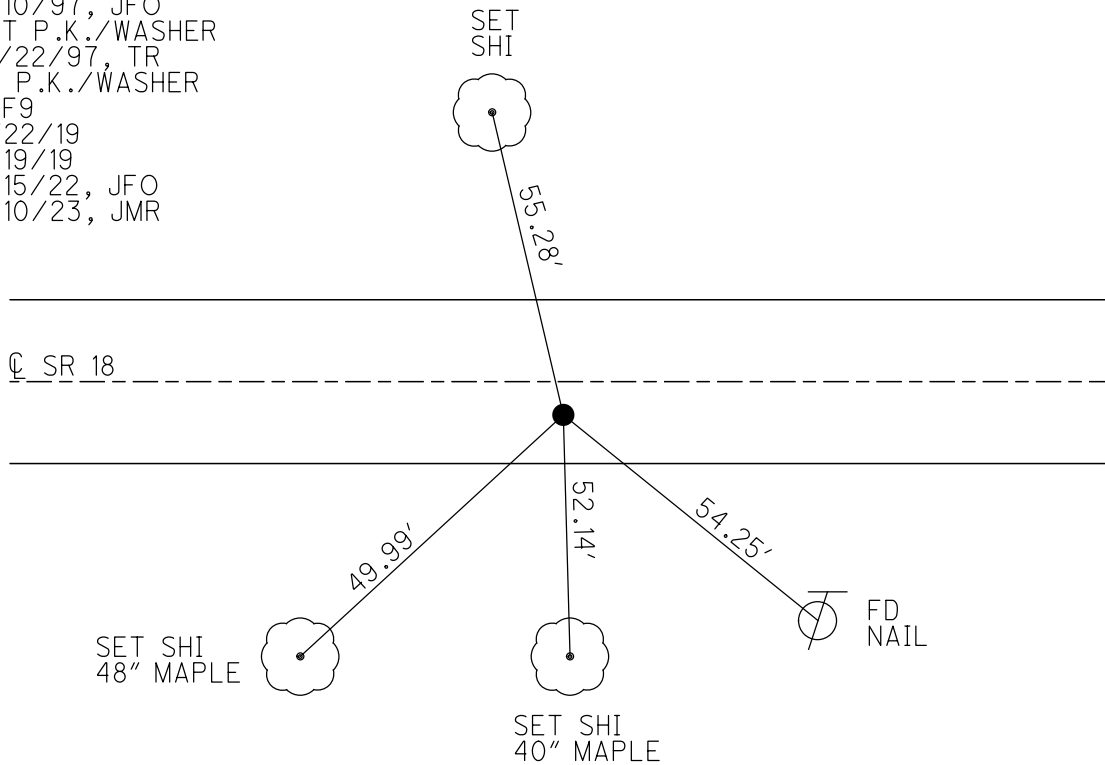
GEOID: 2012A

GRID: NORTHING: 536169.245

EASTING: 1726773.474



RECORD: P.T.  
 STA.162+24.55  
 FD P.K./SHINER  
 ATOP R.R. SPIKE  
 FD P.K.NAIL  
 7/10/97, JFO  
 SET P.K./WASHER  
 10/22/97, TR  
 FD P.K./WASHER  
 REF9  
 4/22/19  
 8/19/19  
 2/15/22, JFO  
 2/10/23, JMR



O.D.O.T. DISTRICT 2 SURVEY OFFICE (USE ONLY)

PERSONNEL \_\_\_\_\_

REFERENCE NO. 9

SHEET 4 OF 48

NOTES AUBLE

DATE 9/1/21

ROUTE SR 18

H.C. NIESE

WEATHER WINDY

COUNTY SENECA

R.C. AUBLE

TEMP. 72°

TOWNSHIP LOUDON

DWG BY RHOADES

PID PVTRAIN

SECTION 16

T 2 N R 13 E

TYPE MONUMENT P.K./WASHER

ON SURFACE - ~~BELOW~~ ON

OFFSET Q PAVEMENT 4.3' ~~LT~~ : RT

7.0' TO RT EDGE PAVEMENT

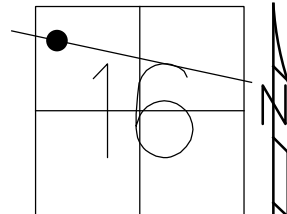
STATION: 162+24.55

HORZ.DATUM: NAD83(2011)

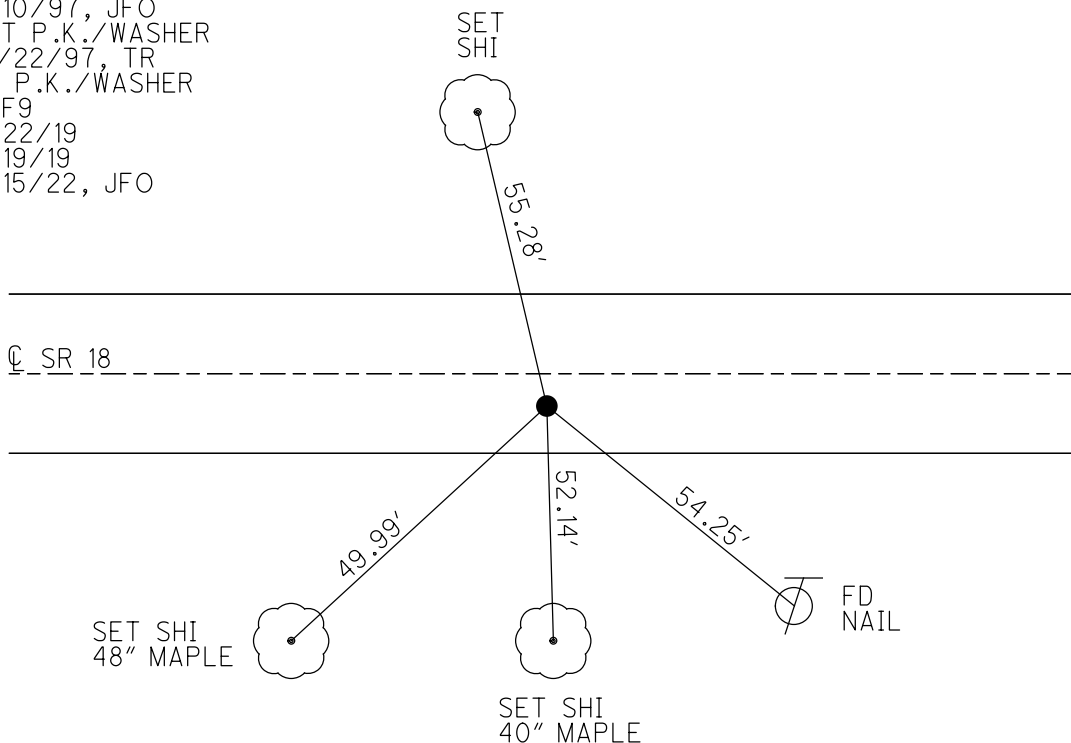
GEOID: 2012A

GRID: NORTHING: 536169.245

EASTING: 1726773.474



RECORD: P.T.  
 STA.162+24.55  
 FD P.K./SHINER  
 ATOP R.R. SPIKE  
 FD P.K.NAIL  
 7/10/97, JFO  
 SET P.K./WASHER  
 10/22/97, TR  
 FD P.K./WASHER  
 REF9  
 4/22/19  
 8/19/19  
 2/15/22, JFO



O.D.O.T. DISTRICT 2 SURVEY OFFICE (USE ONLY)

PERSONNEL

REFERENCE NO. 9

SHEET 4 OF 48

NOTES BARNHISEL

DATE 7/10/97

ROUTE SR 18

H.C. CANTERBURY

WEATHER SUNNY

COUNTY SENECA

R.C. WEAVER

TEMP. 75°

TOWNSHIP LOUDON

ROUSOS

DWG BY NIESE

PID NO PID

SECTION 16

T 2 N R 13 E

TYPE MONUMENT P.K.NAIL

ON SURFACE - ~~BELOW~~ ON

OFFSET Q PAVEMENT 4.7' ~~RT~~ : RT

7.0' TO RT EDGE PAVEMENT

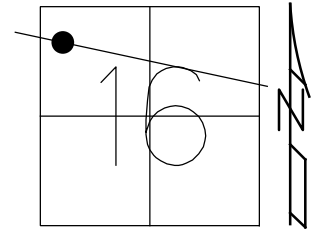
STATION: 162+24.55

HORIZ.DATUM: NAD83(2011)

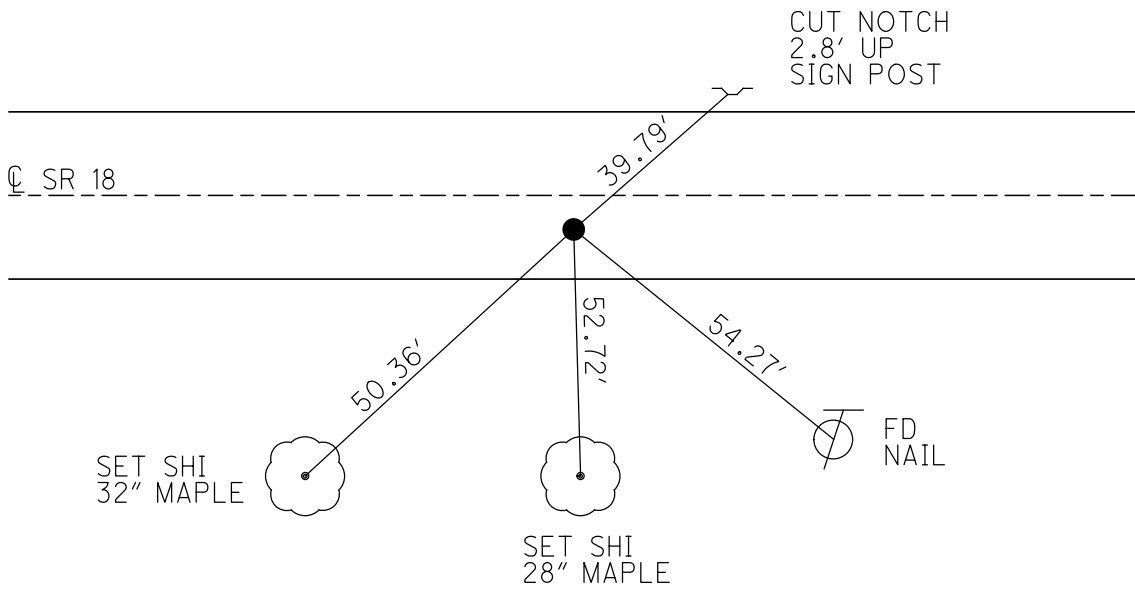
GEOID: 2012A

GRID: NORTHING: 536169.245

EASTING: 1726773.474



RECORD: P.T.  
 STA.162+24.55  
 FD P.K./SHINER  
 ATOP R.R. SPIKE  
 FD P.K.NAIL  
 7/10/97, JFO  
 SET P.K./WASHER  
 10/22/97, TR  
 FD P.K./WASHER  
 REF9  
 4/22/19  
 8/19/19, JFO



O.D.O.T. DISTRICT 2 SURVEY OFFICE

PERSONNEL

REFERENCE NO. 9

SHEET 9 OF 22

NOTES BAR WASHER

H.C. CANTERBURY

DATE 7-10-97

ROUTE 18

R.C. WEAVER

WEATHER SUNNY

COUNTY SENECA

ROUSO

TEMP. +75°

TOWNSHIP LOUDDON

DRAWN BY ROUSO

SECTION 16

T2 N R13 E

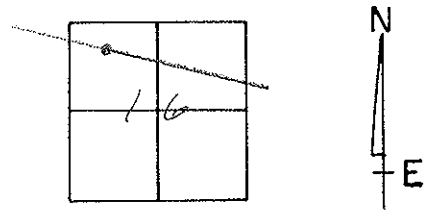
TYPE MONUMENT PK SHINER (FND PK)

ON SURFACE - BELOW SURFACE

LEFT - 0 PAV'T. - RIGHT 4.7'

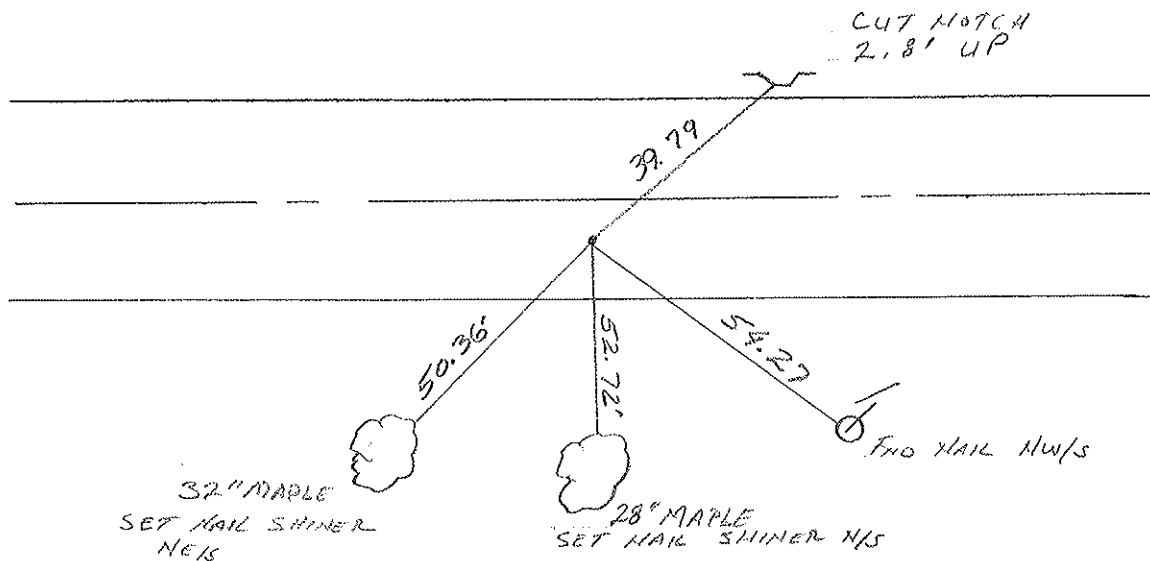
7.0' TO RT EDGE PAVEMENT

S.L.M. 5.321.6 SLK



RESET PK WASHER  
10-22-97  
TR

P.T. SURVEY  
162+24.55  
PK # SHINER ATOP  
RR SPIKE



# O.D.O.T. DISTRICT 2 SURVEY OFFICE

PERSONNEL

REFERENCE NO. 9

SHEET 9 OF     

NOTES CRONIN (DRAW)

H.C. RIPPLE

DATE 11/12/87

ROUTE #18

R.C. BARBOUR (MEAS.)

WEATHER OVERCAST

COUNTY SENECA

GEYMAN

TEMP. 39°

TOWNSHIP LOUDON

SECTION 16

T 2 N R 13 E

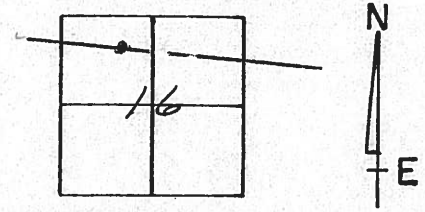
TYPE MONUMENT P.K. & SHINER

ON SURFACE - BELOW     

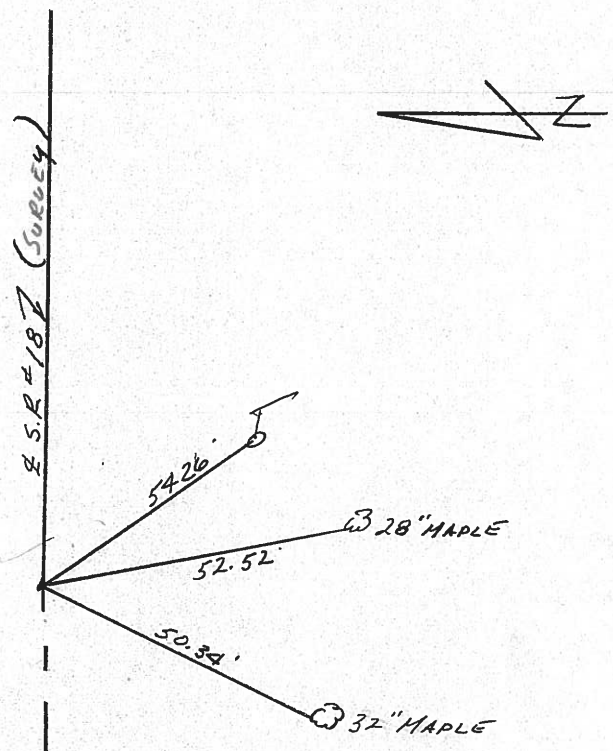
LEFT- & PAV'T. - RIGHT 3.8' ±

TO      EDGE PAVEMENT

S.L.M.     



P.T. SURVEY  
162 + 24.55  
P.K. & SHINER ATOP  
R.R SPIKE



PERSONNEL TITLE PERSONNEL TITLE

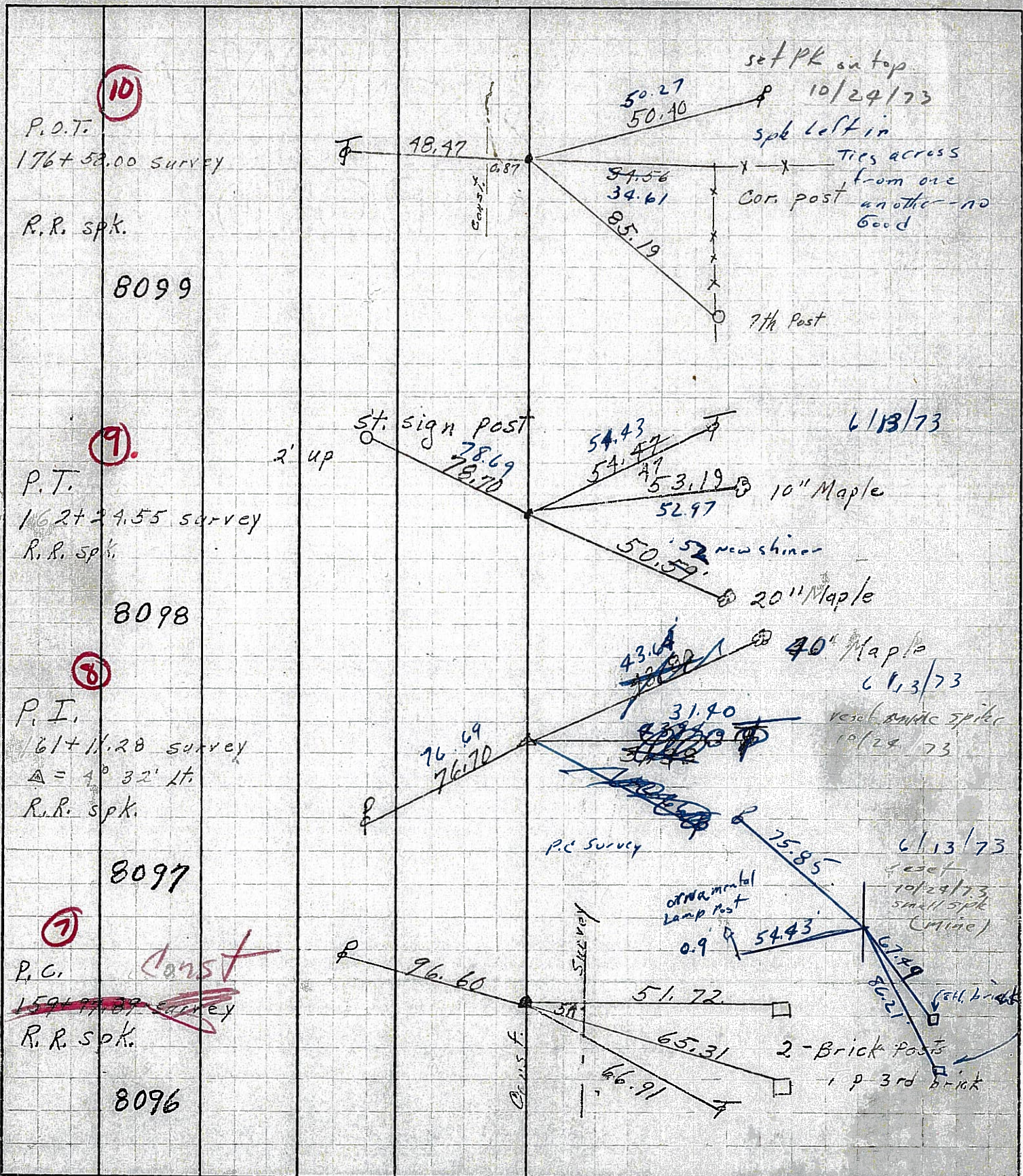
Schneider  
Mossler  
Barbour  
Potts

COUNTY Seneca DATE 10-16-68

S. R. 18 WEATHER Fair-Windy

SEC. Eastoria to Bascom TEMP. 78°

DESCRIPTION Ties for Control Points LEFT CENTER LINE RIGHT JOB NO.



PERSONNEL TITLE PERSONNEL TITLE

Schneider  
 Mosser  
 Barbour  
 Potts

COUNTY Seneca DATE 10-16-68

S. R. 18 WEATHER Fair-Windy

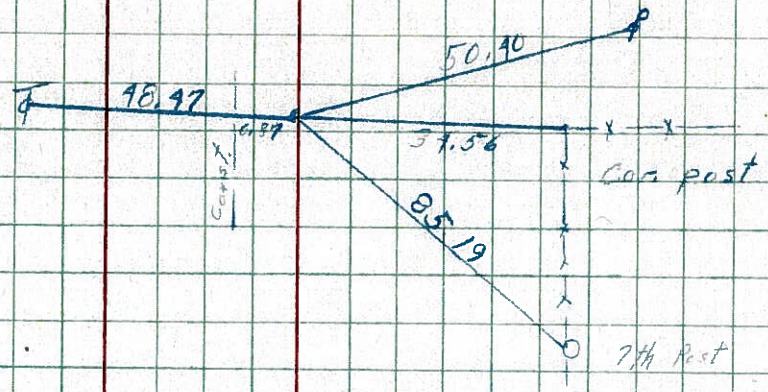
SEC. Fostoria to Bascom TEMP 78°

DESCRIPTION Ties for Control Points

LEFT CENTER LINE RIGHT JOB NO.

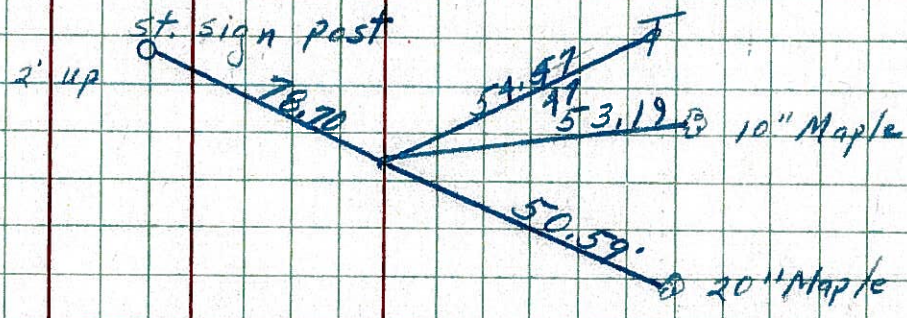
10

P.O.T.  
 176+58.00 survey  
 R.R. spk.  
 8099



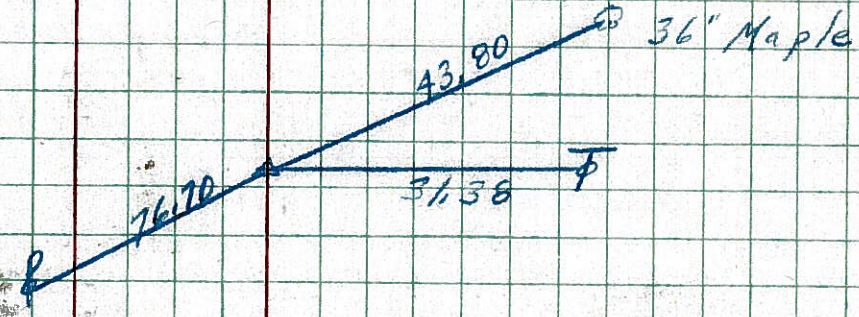
9

P.T.  
 162+39.55 survey  
 R.R. spk.  
 8098



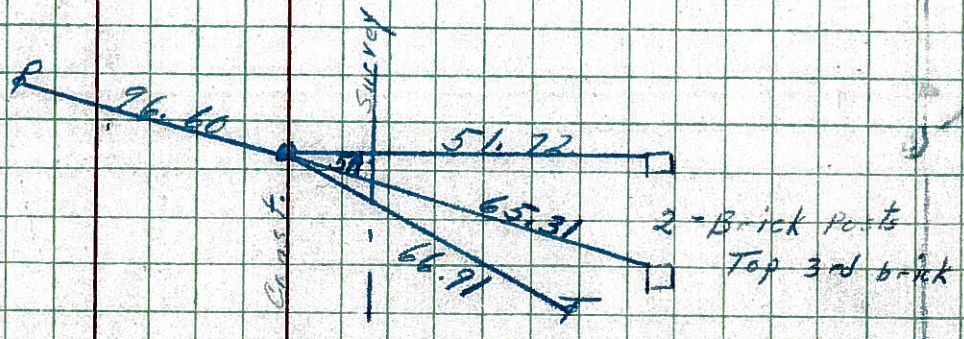
8

P.I.  
 161+11.26 survey  
 $\Delta = 9^\circ 32' 11''$   
 R.R. spk.  
 8097



7

P.C.  
 159+97.89 survey  
 R.R. spk.  
 8096



PERSONNEL TITLE PERSONNEL TITLE

COUNTY Seneca DATE 10-16-68

Schneider

S. R. 18 WEATHER Fair-Windy

Mosser

SEC. Fostoria to Bascom TEMP 78°

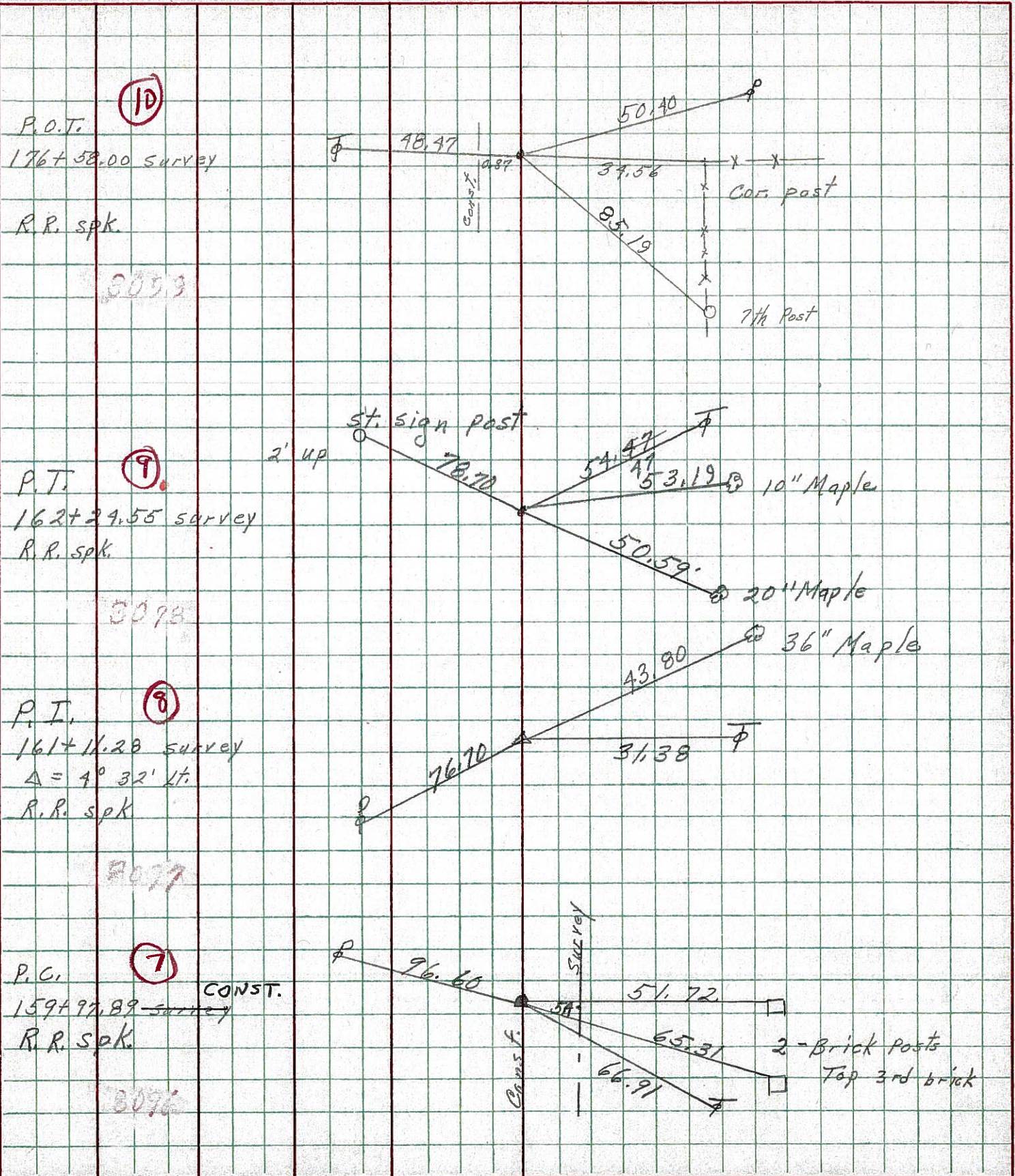
Barbour

Potts

DESCRIPTION Ties for Control Points

LEFT CENTER LINE RIGHT

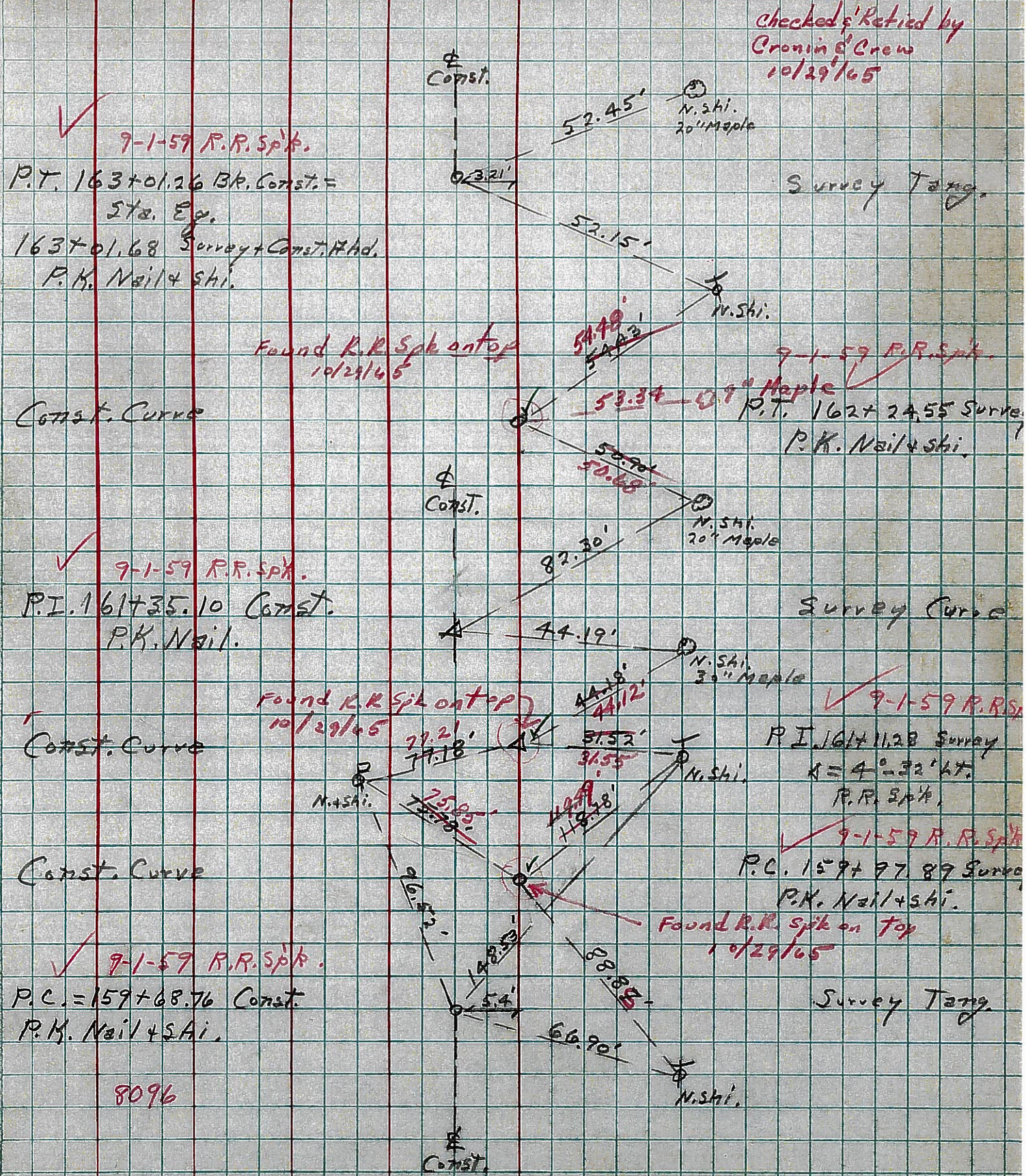
JOB NO.





PERSONNEL TITLE PERSONNEL TITLE COUNTY S Berce DATE Dec. 3, '58  
 #18 Factor's - Bascom Rd. WEATHER Cloudy  
 #18 - (1.79-8.60) TEMP. 35°  
 DESCRIPTION Control Point Ties - Survey & Const. JOB NO. \_\_\_\_\_  
 LEFT CENTER LINE Survey RIGHT

⑨  
⑧  
⑦



8096