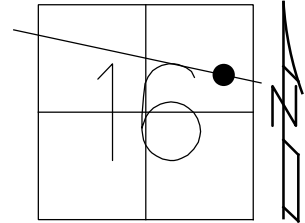


O.D.O.T. DISTRICT 2 SURVEY OFFICE (USE ONLY)

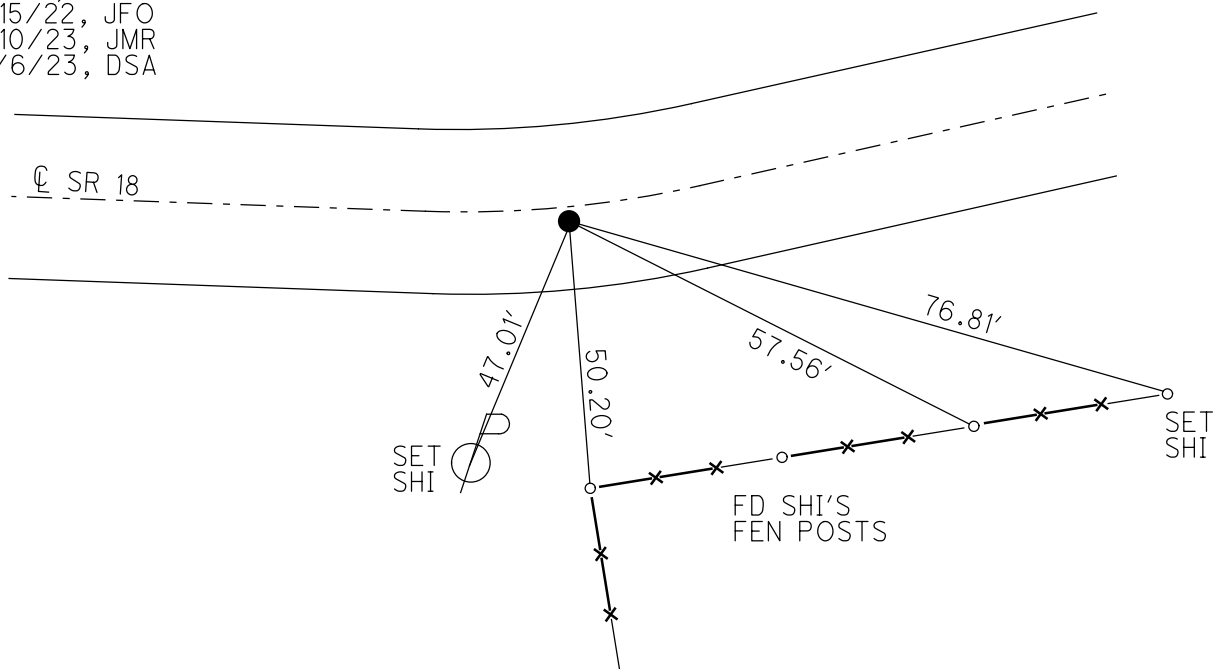
PERSONNEL _____ REFERENCE NO. 13 SHEET 8 OF 48
 NOTES AUBLE DATE 9/1/21 ROUTE SR 18
 H.C. NIESE WEATHER WINDY COUNTY SENECA
 R.C. AUBLE TEMP. 72° TOWNSHIP LOUDON
 SECTION 16
 DWG BY RHOADES PID PVTRAIN T 2 N R 13 E

TYPE MONUMENT MAG/WASHER
 ON SURFACE - ~~BELOW~~ ON
 OFFSET CL PAVEMENT 1.0' ~~LT~~ : RT
9.9' TO RT EDGE PAVEMENT
 STATION: 203+17.80



HORZ.DATUM: NAD83 2011 GEOID: NAVD88 2012A
 GRID: NORTHING: 535880.549 EASTING: 1730855.391

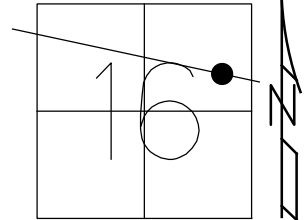
RECORD: P.I.
 $\Delta=02^{\circ}41'$ LT
 STA.203+17.80
 FD MINE SPIKE
 4" BELOW
 7/11/97, TMR
 SET P.K./WASHER
 11/6/97, MB
 FD P.K.SHANK
 REF13
 4/22/19, JFO
 SET MAG/WASHER
 8/19/19, JFO
 FD MAG/WASHER
 9/1/21, DSA
 2/15/22, JFO
 2/10/23, JMR
 10/6/23, DSA



O.D.O.T. DISTRICT 2 SURVEY OFFICE (USE ONLY)

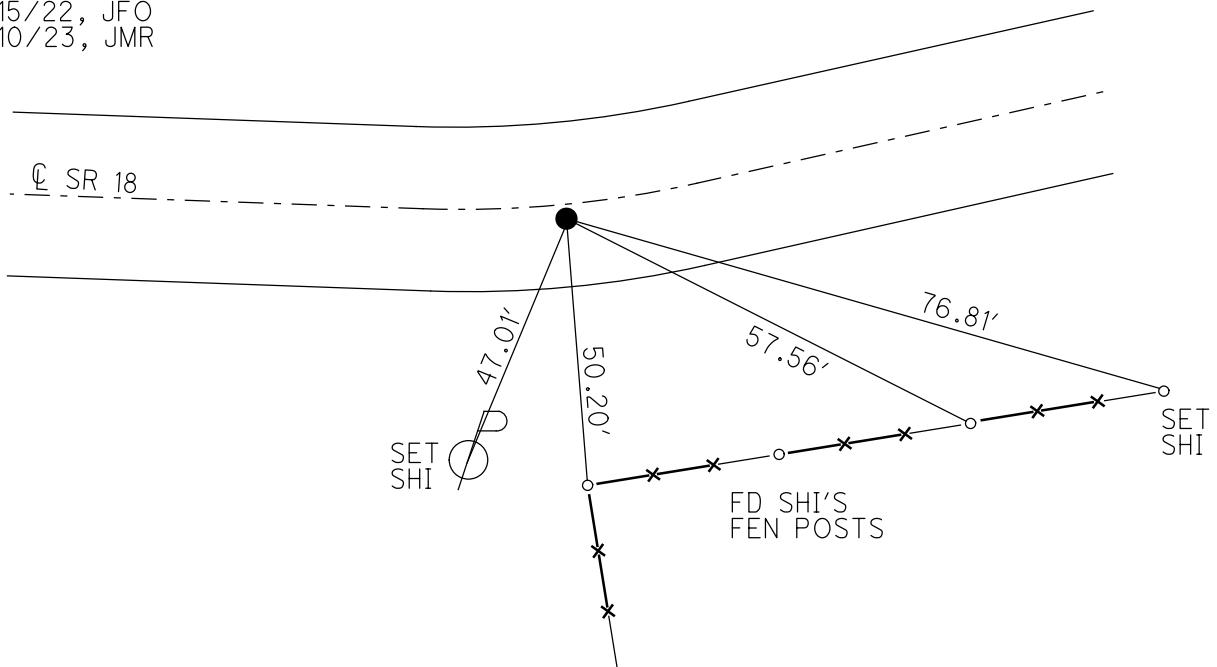
PERSONNEL _____ REFERENCE NO. 13 SHEET 8 OF 48
 NOTES AUBLE DATE 9/1/21 ROUTE SR 18
 H.C. NIESE WEATHER WINDY COUNTY SENECA
 R.C. AUBLE TEMP. 72° TOWNSHIP LOUDON
 DWG BY RHOADES PID PVTRAIN SECTION 16
 T 2 N R 13 E

TYPE MONUMENT MAG/WASHER
 ON SURFACE - ~~BELOW~~ ON
 OFFSET ☐ PAVEMENT 1.0' ~~±~~ : RT
9.9' TO RT EDGE PAVEMENT
 STATION: 203+17.80



HORZ.DATUM: NAD83(2011) GEOID: 2012A
 GRID: NORTHING: 535880.549 EASTING: 1730855.391

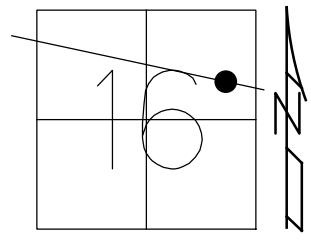
RECORD: P.I.
 $\Delta=02^{\circ}41'$ LT
 STA.203+17.80
 FD MINE SPIKE
 4" BELOW
 7/11/97, TMR
 SET P.K./WASHER
 11/6/97, MB
 FD P.K.SHANK
 REF13
 4/22/19, JFO
 SET MAG/WASHER
 8/19/19, JFO
 FD MAG/WASHER
 9/1/21, DSA
 2/15/22, JFO
 2/10/23, JMR



O.D.O.T. DISTRICT 2 SURVEY OFFICE (USE ONLY)

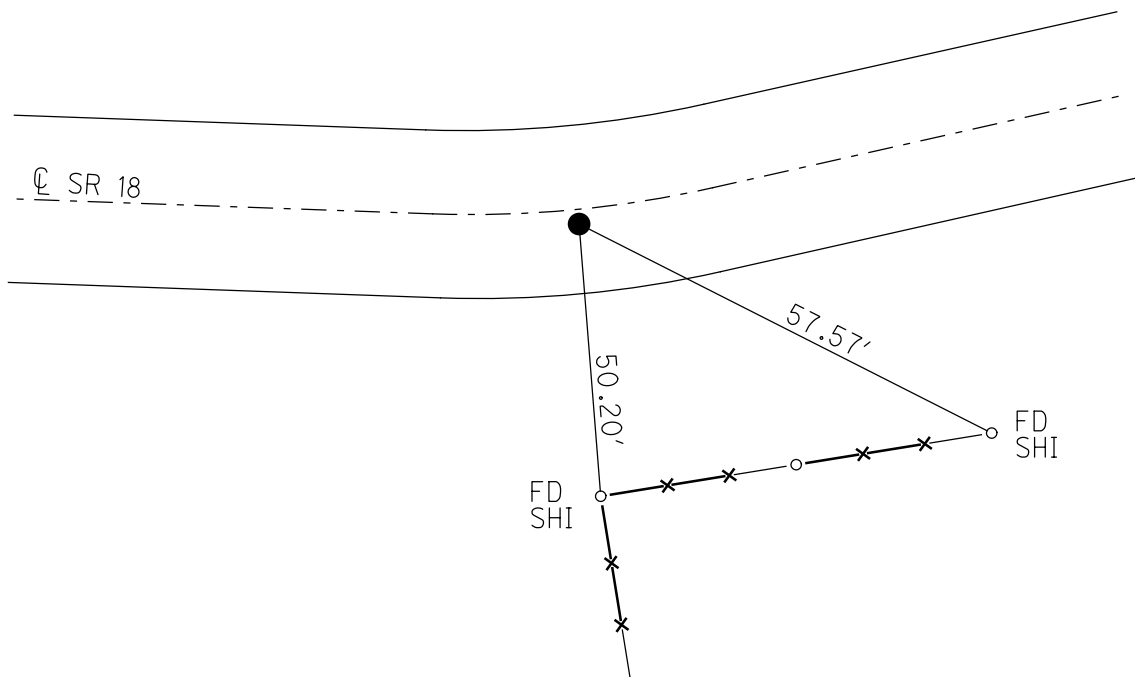
PERSONNEL _____ REFERENCE NO. 13 SHEET 8 OF 48
 NOTES RHOADES DATE 8/19/19 ROUTE SR 18
 H.C. O'DONNELL WEATHER SUNNY COUNTY SENECA
 R.C. AUBLE TEMP. 70° TOWNSHIP LOUDON
 SECTION 16
 DWG BY NIESE PID NO PID T 2 N R 13 E

TYPE MONUMENT MAG/WASHER
 ON SURFACE - ~~BELOW~~ ON
 OFFSET 9.9' TO RT PAVEMENT 1.0' LT : RT
9.9' TO RT EDGE PAVEMENT
 STATION: 203+17.80



HORIZ.DATUM: NAD83(2011) GEOID: 2012A
 GRID: NORTHING: 535880.549 EASTING: 1730855.391

RECORD: P.I.
 $\Delta=02^{\circ}41'$ LT
 STA. 203+17.80
 FD MINE SPIKE
 4" BELOW
 7/11/97, TMR
 SET P.K./WASHER
 11/6/97, MB
 FD P.K.SHANK
 REF13
 4/22/19, JFO



O.D.O.T. DISTRICT 2 SURVEY OFFICE

PERSONNEL

REFERENCE NO. 13

SHEET 13 OF 22

NOTES BARNHISEL

H.C. CANTERBURY

DATE 7-11-97

ROUTE 18

R.C. WEAVER

WEATHER SUNNY

COUNTY SENECA

M. Roussos

TEMP. +17.5°

TOWNSHIP LOUISON

DRAWN BY Roussos

SECTION 16

T2 N R 13 E

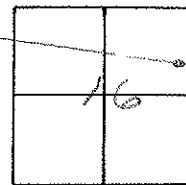
TYPE MONUMENT MINE SPIKE

ON SURFACE - BELOW 4" BELOW

LEFT- \odot PAV'T. - RIGHT 1.5' RT

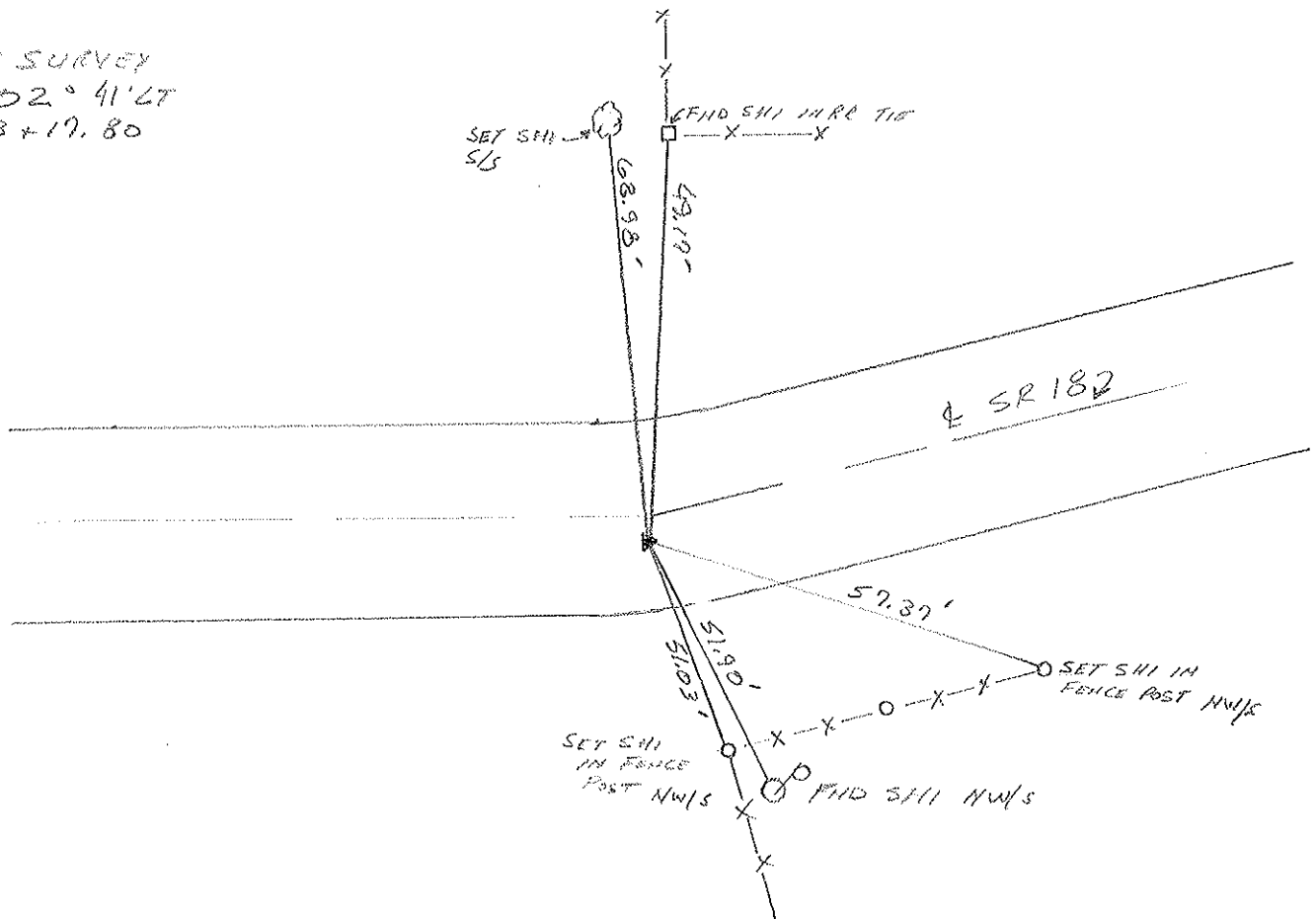
9.9' TO RT EDGE PAVEMENT

S.L.M. 6+569.8



RESET PK. WASHER
11-6-97
MB

RE SURVEY
 $\Delta = 02^{\circ} 41' 67''$
203+17.80



O.D.O.T. DISTRICT 2 SURVEY OFFICE

PERSONNEL

REFERENCE NO. 13

SHEET 13 OF

NOTES CROWIN (DRAW)

DRAWN 1/19/90

H.C. RIPPLE

DATE 11/12/87

ROUTE #18

R.C. BARBOUR MEAS

WEATHER SUNNY

COUNTY SENECA

GEYMAN

TEMP. 50°

TOWNSHIP LOUDBON

SECTION 16

T. 2 N R. 13 E

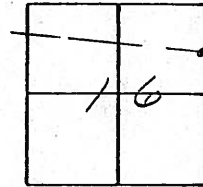
TYPE MONUMENT MINE SPIKE

ON SURFACE - BELOW 2" ±

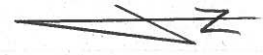
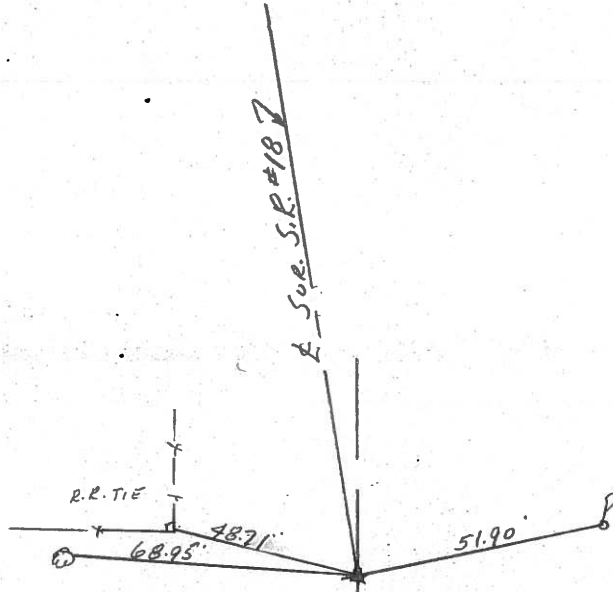
LEFT - & PAV'T. - RIGHT 1.5' ±

TO EDGE PAVEMENT

S.L.M.



P.I. SURVEY
Δ = 02° 41' 24"
20.3 ± 17.80



PERSONNEL TITLE PERSONNEL TITLE COUNTY Seneca DATE 10-16-68
Schneider _____
Mosser _____
Barbour _____
Pa. Hs _____
 S. R. 18 WEATHER Fair - Windy
 SEC. Fosteria to Bascom TEMP. 80°

DESCRIPTION Ties for Control Points LEFT CENTER LINE RIGHT JOB NO.

<p>14 P.I. 226 + 77.92 R.R. spk.</p>	<p>reset mine spk 10/24/73 Survey 8103</p>		<p>13-A P.I. survey 212 + 13.77 I. Pin 4.25 7.66 Gr. Rail 13-B R.R. spk pulled 70.52 65.30 30.85 217 + 13.97 P.I. survey reset mine spk 10/24/73</p>
<p>13 P.I. 203 + 17.80 Survey $\Delta = 2^\circ 41' L$ R.R. spk.</p>	<p>8102</p>		<p>102.00 pulled spk. 6/14/73 51.85 6/13/73 pulled spk reset mine spk 10/24/73</p>
<p>12 P.I. survey 196 + 63.75 $\Delta = 0^\circ 29' R$ R.R. spk.</p>	<p>8101</p>		<p>66.93 6/13/73 pulled spk. reset mine spk 10/24/73</p>
<p>11 P.O.T. survey 190 + 00.62 R.R. spk.</p>	<p>8100</p>		<p>75.86 6/13/73 pulled spk reset mine spk 10/24/73</p>

PERSONNEL TITLE PERSONNEL TITLE
 Schneider _____
 Mosser _____
 Barbour _____
 Potts _____

COUNTY Seneca DATE 10-16-68
 S. R. 18 WEATHER Fair - windy
 SEC. Fastoria to Bascom TEMP. 80°

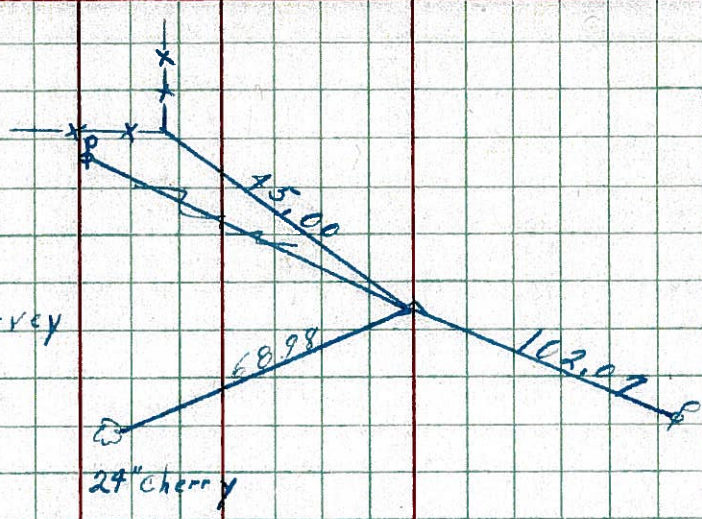
DESCRIPTION Ties for Control Points JOB NO. _____

LEFT CENTER LINE RIGHT

14

P.I.
 226 + 77.92 Survey
 R.R. spk.

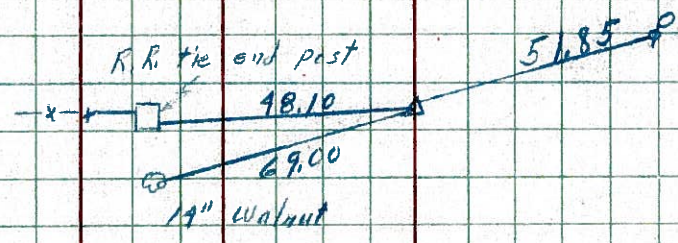
8103



13

P.I.
 203 + 17.80 Survey
 $\Delta = 2^\circ 41' 14''$
 R.R. spk.

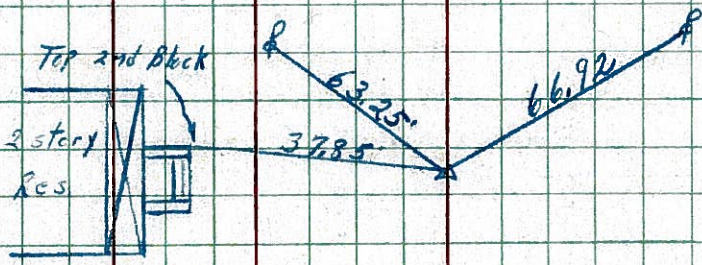
8102



12

P.I. Survey
 196 + 63.75
 $\Delta = 0^\circ 29' 16''$
 R.R. spk.

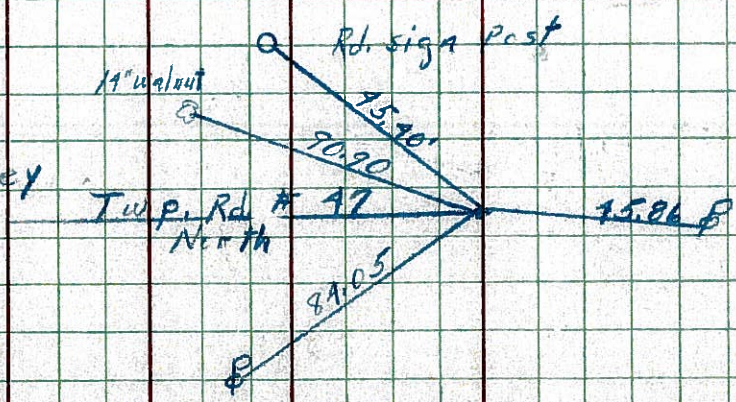
8101



11

P.O.T. Survey
 190 + 00.62
 R.R. spk.

8100

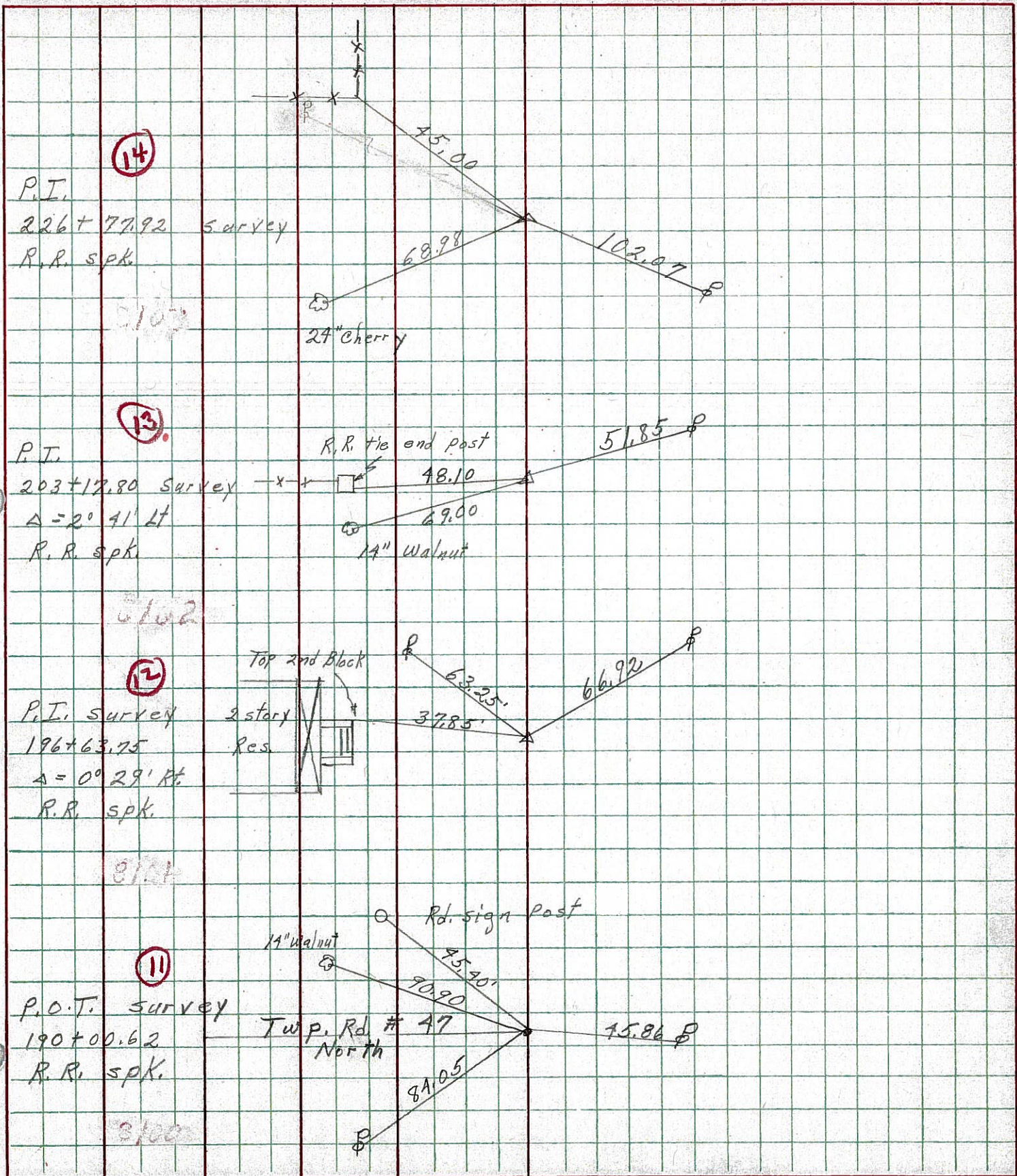


PERSONNEL TITLE PERSONNEL TITLE
 Schneider _____
 Mosser _____
 Barbour _____
 Potts _____

COUNTY Seneca DATE 10-16-68
 S. R. 18 WEATHER Fair-windy
 SEC. Fostoria to Bascom TEMP. 80°

DESCRIPTION Ties for Control Points JOB NO. _____

LEFT CENTER LINE RIGHT



PERSONNEL TITLE PERSONNEL TITLE

COUNTY Seneca

DATE Dec. 18, '58

F. S. H.
Cromin
Leemaster

S. R. F18 Fostoria - Bascom Rd. WEATHER Cloudy

Lahr
John K.

SEC. Sec. -18 (1.79-860) TEMP. 20°

DESCRIPTION Control Point Ties - E Survey & Const.

JOB NO.

LEFT CENTER LINE RIGHT

