

O.D.O.T. DISTRICT 2 SURVEY OFFICE (USE ONLY)

PERSONNEL

REFERENCE NO. 13 A

SHEET 9 OF 48

NOTES BARNHISEL

DATE 7/11/97

ROUTE SR 18

H.C. CANTERBURY

WEATHER SUNNY

COUNTY SENECA

R.C. WEAVER

TEMP. 75°

TOWNSHIP LOUDON

ROUSOS

SECTION 15

DWG BY NIESE

PID NO PID

T 2 N R 13 E

TYPE MONUMENT IPIN

ON SURFACE - ~~BELOW~~ ON

OFFSET 9.7' C PAVEMENT 21.3' LT : ~~RT~~

9.7' TO LT EDGE PAVEMENT

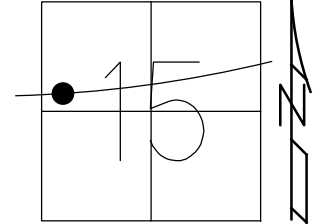
STATION: 212+13.77

HORZ. DATUM: -

GEOID: -

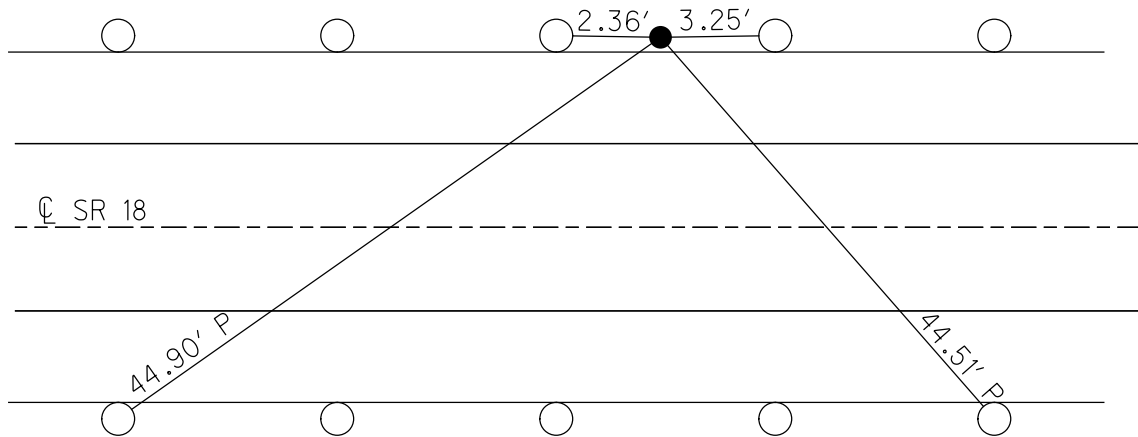
GRID: NORTHING: -

EASTING: -



RECORD: P.I.
 STA. 212+13.77
 $\Delta = 07^\circ 56' 00''$ RT
 D.N.F.
 4/22/19, JFO

FD SHI'S
 GR POSTS



O.D.O.T. DISTRICT 2 SURVEY OFFICE

PERSONNEL

REFERENCE NO. 13-A

SHEET 14 OF 22

NOTES BARNHISEL

H.C. CANTONBURY

R.C. WEAVER

Rousos

Drawn By Rousos

DATE 7-11-97

WEATHER SUNNY

TEMP. +75°

ROUTE 18

COUNTY SENECA

TOWNSHIP London

SECTION 15

T 2 N R 13 E

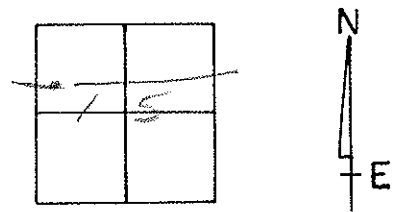
TYPE MONUMENT I PIN

ON SURFACE - ~~BELOW~~ ON SURFACE

LEFT - ~~CL~~ PAV'T. - RIGHT 21.3'

9.7 TO L+ EDGE PAVEMENT

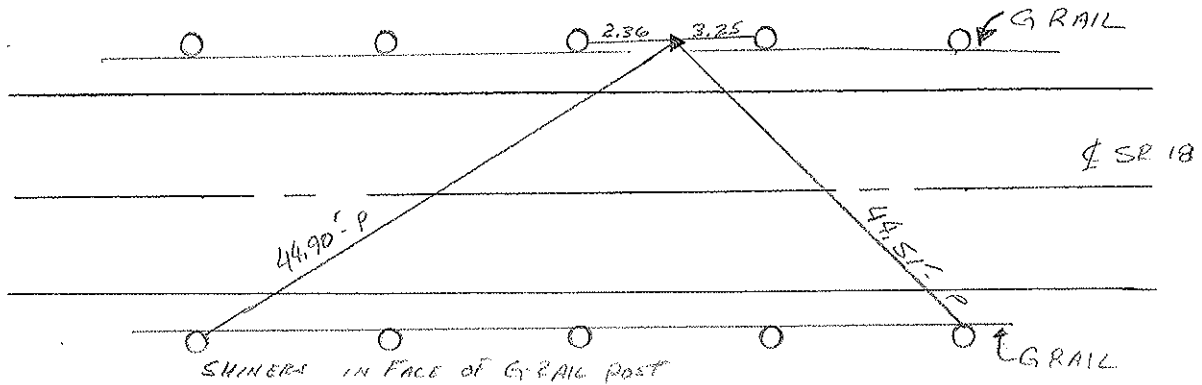
S.L.M. 6 x 842.4 SLK



P.I. SURVEY

212 + 13.77

$\Delta = 07^{\circ} 56' 00''$ RT



O.D.O.T. DISTRICT 2 SURVEY OFFICE

PERSONNEL _____

REFERENCE NO. 14

SHEET 14 OF _____

NOTES Cronin (DRAW)

DRAWN 1/19/90

H.C. RIPPLE

DATE 11/12/87

ROUTE # 18

R.C. BARBOUR & MERS

WEATHER SUNNY

COUNTY SENECA

GEYMAN

TEMP. 50°

TOWNSHIP LOUDBON

SECTION 15

T 2 N R 13 E

TYPE MONUMENT F. PIN

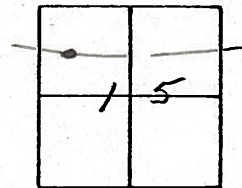
ON SURFACE - BELOW _____

LEFT - € PAV T. - RIGHT 20'±

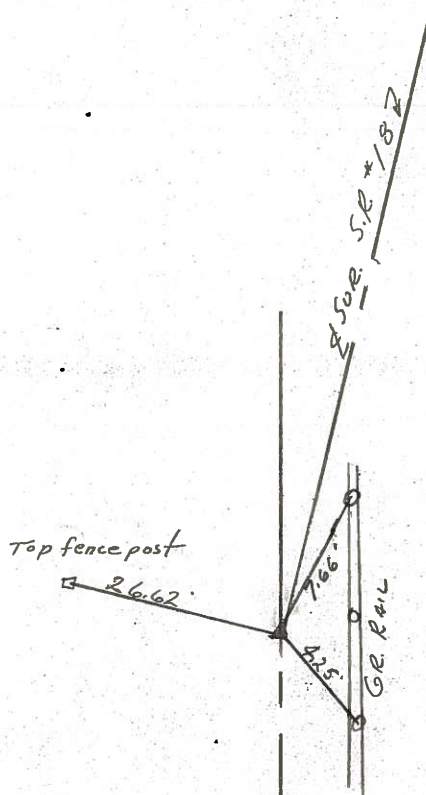
TO _____ EDGE PAVEMENT

S.L.M. _____

13-A



P.I. SURVEY
212±13.77
A = 07°56'00" Rt.



PERSONNEL TITLE PERSONNEL TITLE

Schneider
 Mosser
 Barbour
 Potts

COUNTY Seneca

DATE 10-16-68

S. R. 18

WEATHER Fair - Windy

SEC. Fosteria to Bascom

TEMP. 80°

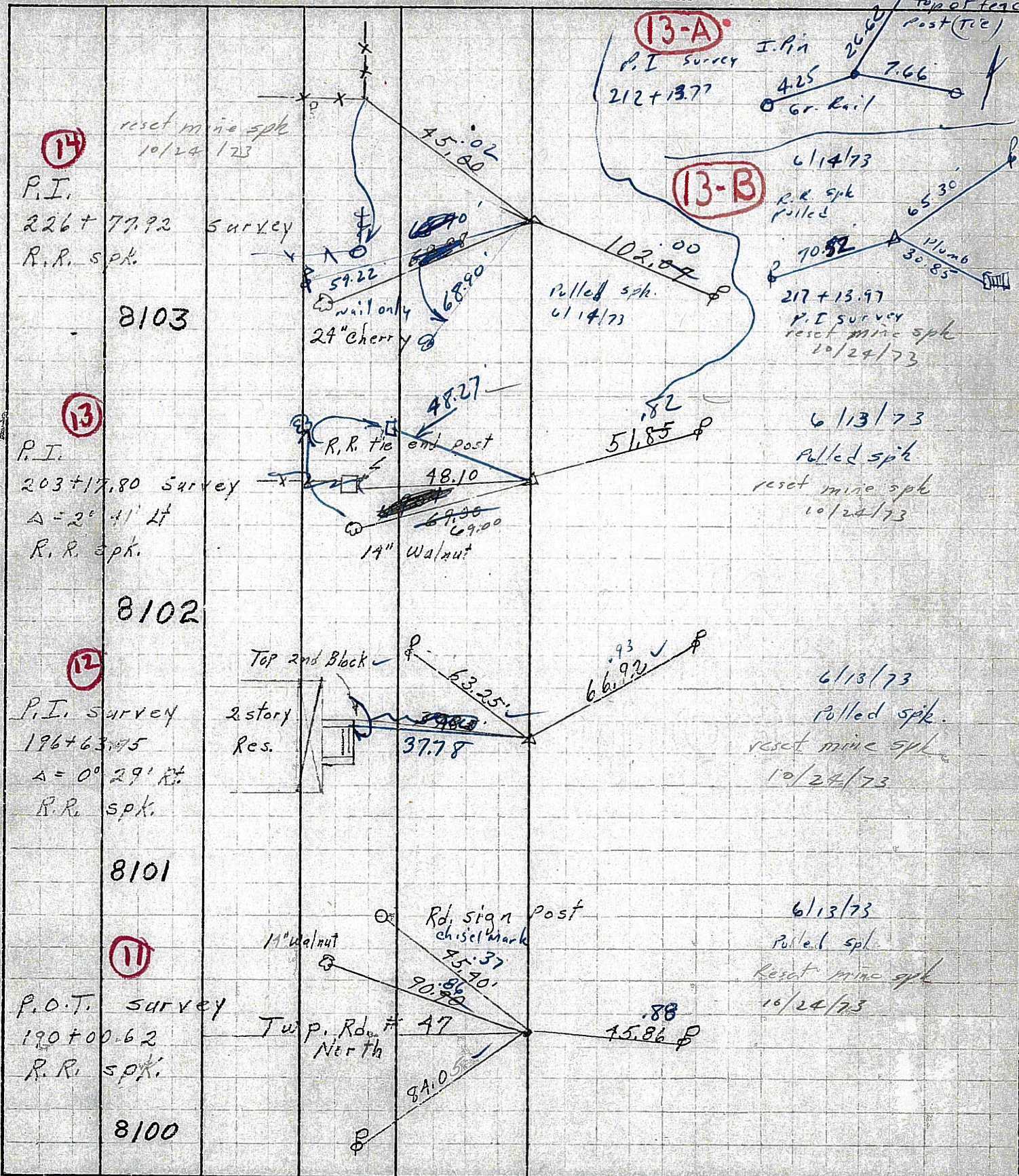
DESCRIPTION Ties for Control Points

LEFT

CENTER LINE

RIGHT

JOB NO.



14

reset mine spk
 10/24/73

P.I.
 226+77.92
 R.R. spk.

8103

13

P.I.
 203+17.80
 Survey
 Δ = 2° 41' Lt
 R.R. spk.

8102

12

P.I. survey
 196+63.75
 Δ = 0° 29' Rt
 R.R. spk.

8101

11

P.O.T. survey
 190+00.62
 R.R. spk.

8100

13-A

P.I. survey
 212+13.77

13-B

6/14/73
 P.R. spk
 pulled
 217+13.97
 P.I. survey
 reset mine spk
 10/24/73

6/13/73

pulled spk
 reset mine spk
 10/24/73

6/13/73

pulled spk.
 reset mine spk
 10/24/73

6/13/73

pulled spk.
 reset mine spk
 10/24/73

PERSONNEL TITLE PERSONNEL TITLE

COUNTY Seneca

DATE Dec. 18, '58

Hsh

S. R. #18 Fosteria-Buscom Rd. WEATHER Cloudy

Cromie

Lahr

SEC. Sen-18 (1.79-8.60)

TEMP. 20°

Leemaster

John M.

DESCRIPTION Control Point Ties - Survey & Const.

JOB NO.

LEFT

CENTER LINE - Survey

RIGHT

13-A

11-2-59 I.P.

Survey Curve

P.I. 212+13.77 Survey (Plum-Line)

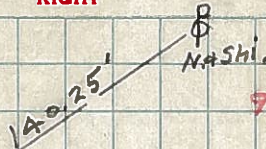
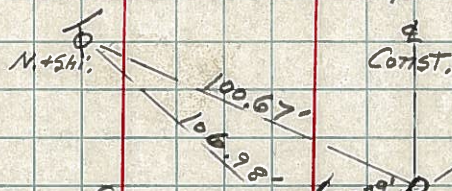
P.R. S.P.K.

Did not find

10/2/55

Found 11/1/55

Found I.P.



9-1-59 P.R. S.P.K.

P.T. 212+30.50 Const

Tacked Hub

Const. Curve



All Guard Rail Post

All Ties Plumbed

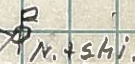
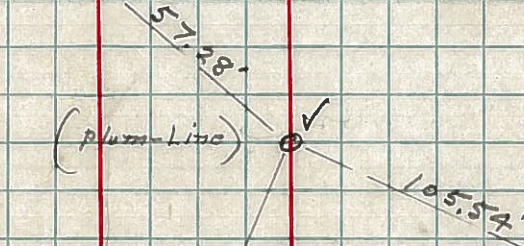
Const. Curve

11-2-59 I.P.

P.C. 211+14.45 Survey (Plum-Line)

P.K. Nail + Shi.

Did not find



9-1-59 P.R. S.P.K.

Survey Tang

(Plum-Line)

3.78'

86.40'

P.I. 209+98.54 Const

N+shi.

P.K. Nail + Shi.

Twin 15" Pear



N+shi. 10" Hedge Apple

N+shi.

9-1-59 P.R. S.P.K.

Survey Tang

(Plum-Line)

3.82'



P.C. 207+66.33 Const

P.K. Nail + Shi.



N+shi.

8" Poplar

Const.