

O.D.O.T. DISTRICT 2 SURVEY OFFICE (USE ONLY)

PERSONNEL

REFERENCE NO. 13 B

SHEET 10 OF 48

NOTES AUBLE

DATE 10/6/23

ROUTE SR 18

H.C. MILLER

WEATHER FAIR

COUNTY SENECA

R.C. AUBLE

TEMP. 42°

TOWNSHIP LOUDON

DWG BY RHOADES

PID PVTRAIN

SECTION 15

T 2 N R 13 E

TYPE MONUMENT MAG/WASHER

ON SURFACE - ~~BELOW~~ ON

OFFSET Q PAVEMENT 7.0' ~~LT~~ : RT

4.8' TO RT EDGE PAVEMENT

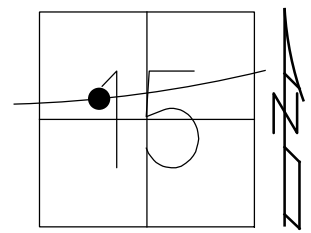
STATION: 217+13.97

HORIZ.DATUM: NAD83(2011)

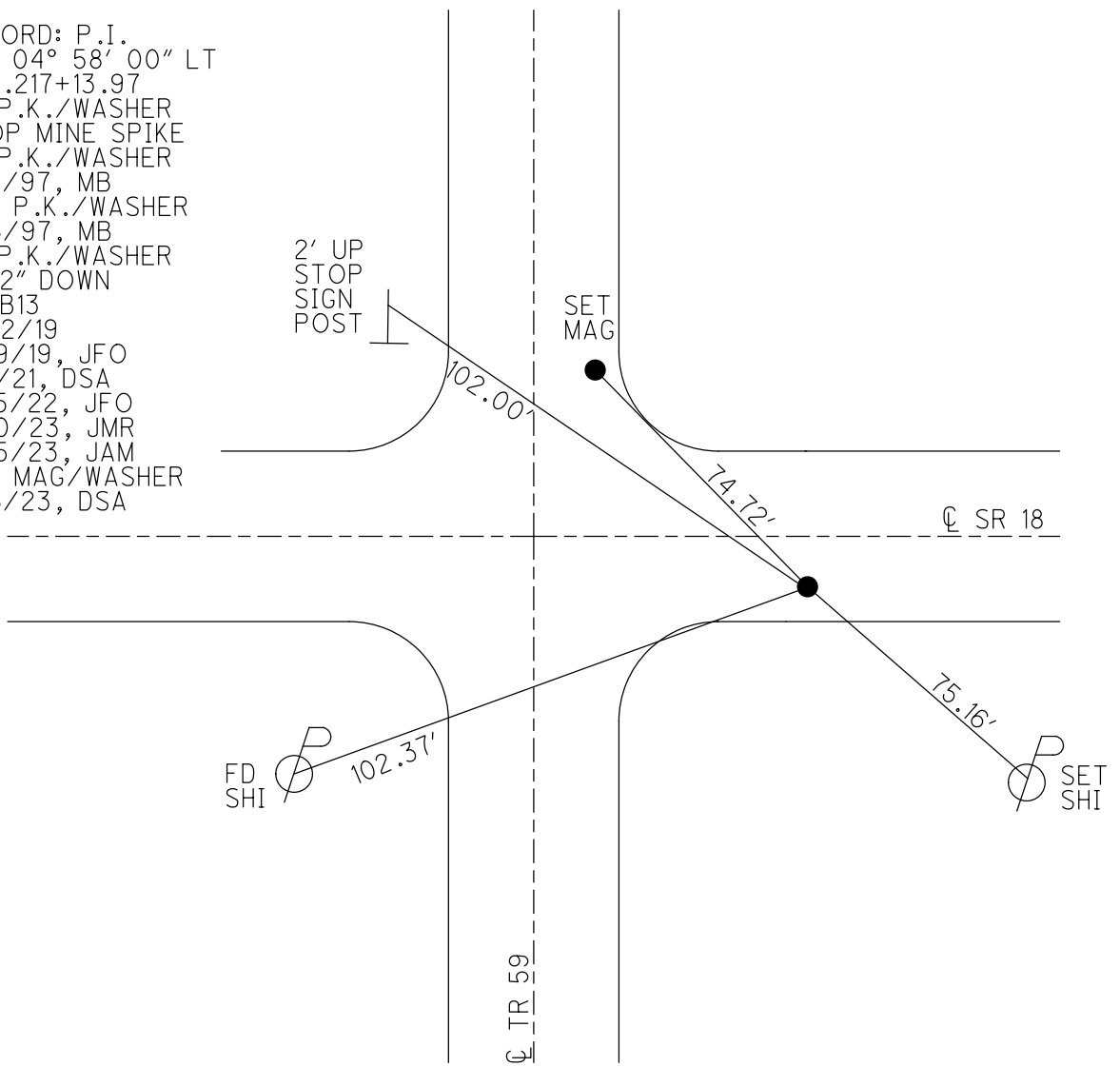
GEOID: 2012A

GRID: NORTHING: 535768.414

EASTING: 1732243.463



RECORD: P.I.  
 $\Delta = 04^{\circ} 58' 00''$  LT  
 STA.217+13.97  
 FD P.K./WASHER  
 ATOP MINE SPIKE  
 FD P.K./WASHER  
 7/11/97, MB  
 SET P.K./WASHER  
 11/6/97, MB  
 FD P.K./WASHER  
 1 1/2" DOWN  
 REFB13  
 4/22/19  
 8/19/19, JFO  
 9/1/21, DSA  
 2/15/22, JFO  
 2/10/23, JMR  
 9/15/23, JAM  
 SET MAG/WASHER  
 11/6/23, DSA



O.D.O.T. DISTRICT 2 SURVEY OFFICE (USE ONLY)

PERSONNEL

REFERENCE NO. 13 B

SHEET 10 OF 48

NOTES AUBLE

DATE 9/1/21

ROUTE SR 18

H.C. NIESE

WEATHER WINDY

COUNTY SENECA

R.C. AUBLE

TEMP. 72°

TOWNSHIP LOUDON

DWG BY RHOADES

PID PVTRAIN

SECTION 15

T 2 N R 13 E

TYPE MONUMENT P.K./WASHER

~~ON SURFACE~~ - BELOW 1 1/2"

OFFSET Q PAVEMENT 7.0' ~~LT~~ : RT

4.8' TO RT EDGE PAVEMENT

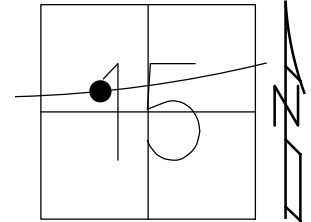
STATION: 217+13.97

HORZ.DATUM: NAD83(2011)

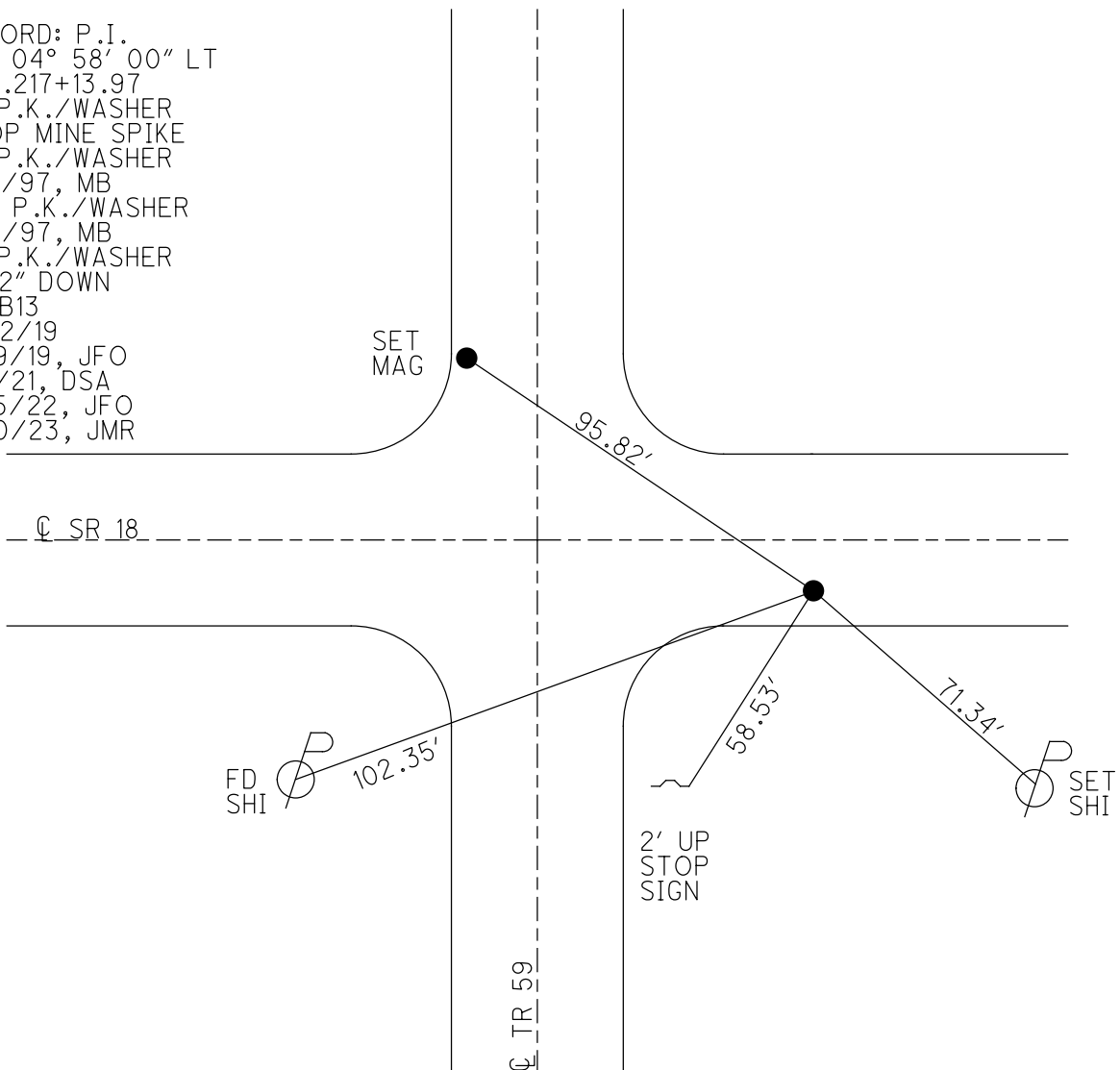
GEOID: 2012A

GRID: NORTHING: 535768.414

EASTING: 1732243.463



RECORD: P.I.  
 $\Delta = 04^{\circ} 58' 00''$  LT  
 STA. 217+13.97  
 FD P.K./WASHER  
 ATOP MINE SPIKE  
 FD P.K./WASHER  
 7/11/97, MB  
 SET P.K./WASHER  
 11/6/97, MB  
 FD P.K./WASHER  
 1 1/2" DOWN  
 REFB13  
 4/22/19  
 8/19/19, JFO  
 9/1/21, DSA  
 2/15/22, JFO  
 2/10/23, JMR



O.D.O.T. DISTRICT 2 SURVEY OFFICE (USE ONLY)

PERSONNEL \_\_\_\_\_ REFERENCE NO. 13 B SHEET 10 OF 48  
 NOTES AUBLE DATE 9/1/21 ROUTE SR 18  
 H.C. NIESE WEATHER WINDY COUNTY SENECA  
 R.C. AUBLE TEMP. 72° TOWNSHIP LOUDON  
 SECTION 15  
 DWG BY RHOADES PID PVTRAIN T 2 N R 13 E

TYPE MONUMENT P.K./WASHER

~~ON SURFACE~~ - BELOW 1 1/2"

OFFSET 4.8' TO RT EDGE PAVEMENT RT : RT

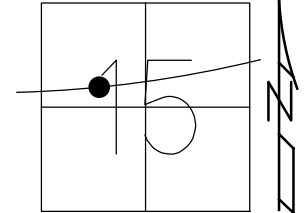
STATION: 217+13.97

HORZ.DATUM: NAD83(2011)

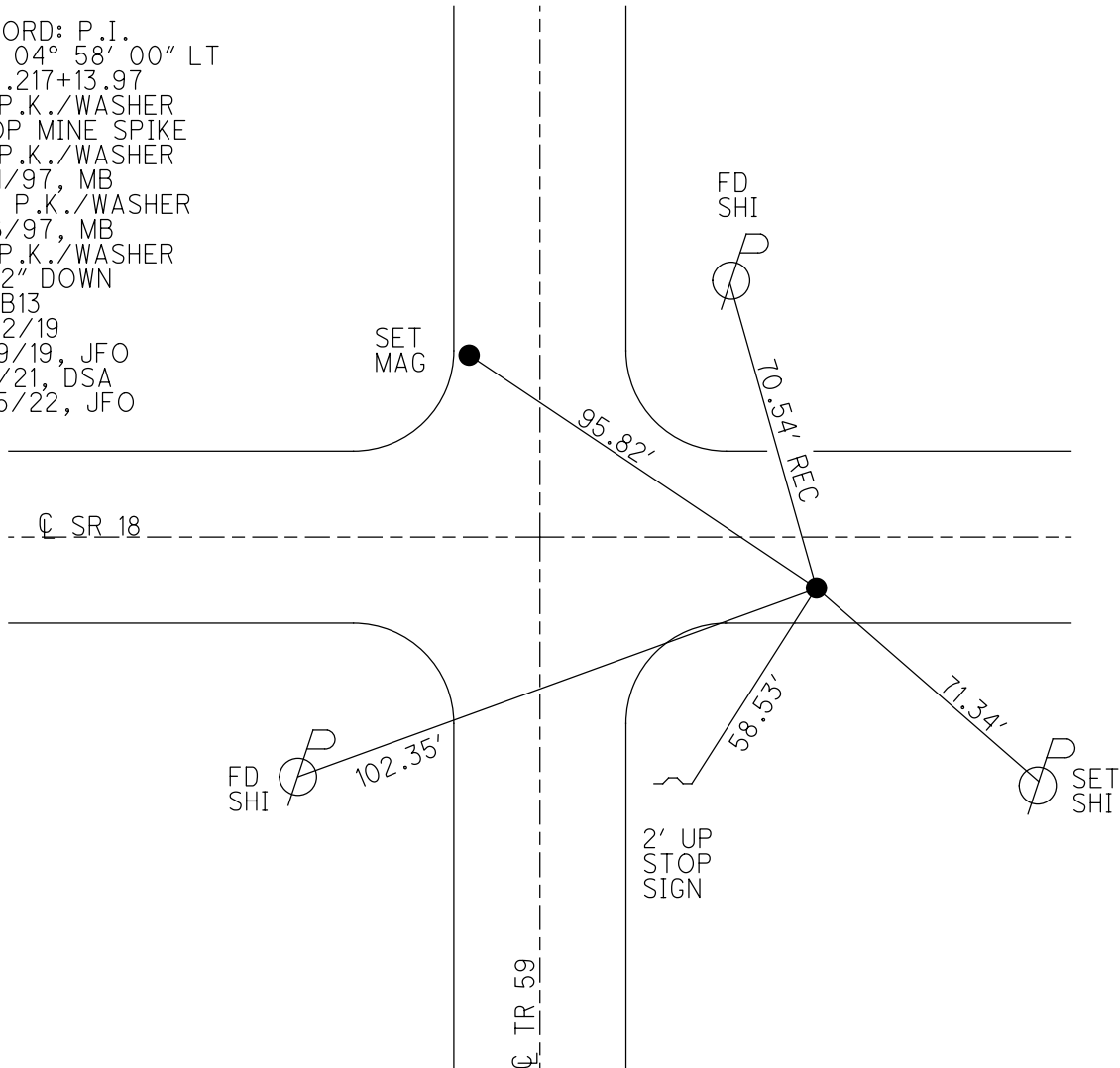
GEOID: 2012A

GRID: NORTHING: 535768.414

EASTING: 1732243.463



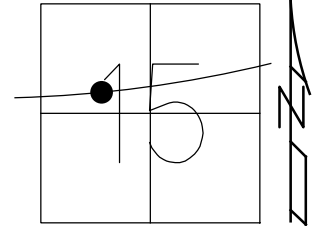
RECORD: P.I.  
 $\Delta = 04^\circ 58' 00''$  LT  
 STA.217+13.97  
 FD P.K./WASHER  
 ATOP MINE SPIKE  
 FD P.K./WASHER  
 7/11/97, MB  
 SET P.K./WASHER  
 11/6/97, MB  
 FD P.K./WASHER  
 1 1/2" DOWN  
 REFB13  
 4/22/19  
 8/19/19, JFO  
 9/1/21, DSA  
 2/15/22, JFO



O.D.O.T. DISTRICT 2 SURVEY OFFICE (USE ONLY)

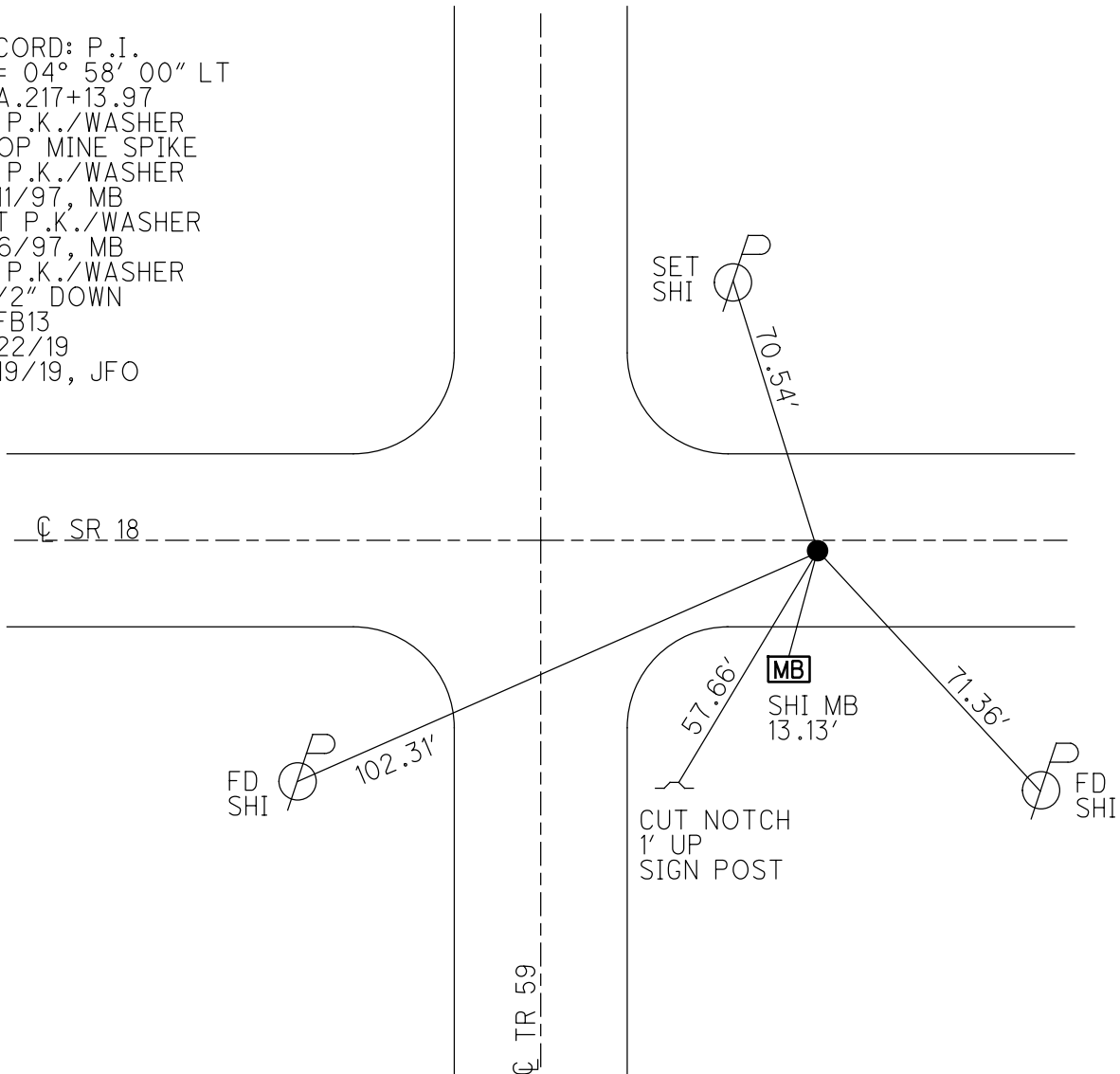
PERSONNEL \_\_\_\_\_ REFERENCE NO. 13 B SHEET 10 OF 48  
 NOTES BARNHEISEL DATE 7/11/97 ROUTE SR 18  
 H.C. CANTERBURY WEATHER SUNNY COUNTY SENECA  
 R.C. WEAVER TEMP. 75° TOWNSHIP LOUDON  
ROUSOS SECTION 15  
 DWG BY NIESE PID NO PID T 2 N R 13 E

TYPE MONUMENT P.K./WASHER  
 ON SURFACE - ~~BELOW~~ ON  
 OFFSET 4.8' TO RT EDGE PAVEMENT  
 STATION: 217+13.97



HORIZ.DATUM: NAD83(2011) GEOID: 2012A  
 GRID: NORTHING: 535768.414 EASTING: 1732243.463

RECORD: P.I.  
 $\Delta = 04^{\circ} 58' 00''$  LT  
 STA. 217+13.97  
 FD P.K./WASHER  
 ATOP MINE SPIKE  
 FD P.K./WASHER  
 7/11/97, MB  
 SET P.K./WASHER  
 11/6/97, MB  
 FD P.K./WASHER  
 1 1/2" DOWN  
 REFB13  
 4/22/19  
 8/19/19, JFO



# O.D.O.T. DISTRICT 2 SURVEY OFFICE

PERSONNEL

REFERENCE NO. 13-B

SHEET 15 OF 22

NOTES BARNHISEL

H.C. CANTERBURY

R.C. WEAVER

F Rousos

DRAWN BY Rousos

DATE 7-11-97

WEATHER SUNNY

TEMP. +75°

ROUTE 18

COUNTY SENECA

TOWNSHIP LOUDBON

SECTION 15

T 2 N R 13 E

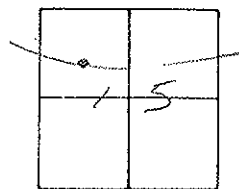
TYPE MONUMENT P.K. WASHER

ON SURFACE - BELOW ON SURFACE

LEFT - C PAW'T. - RIGHT 7.0

4.8 TO RT EDGE PAVEMENT

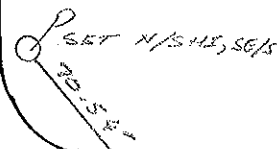
S.L.M. G. 994.8 SLK



P.I. SURVEY  
 $\Delta = 04^{\circ} 58' 00''$  LT  
 217 + 13.97  
 1/2" WASHER ATOP  
 MINE SPIKE

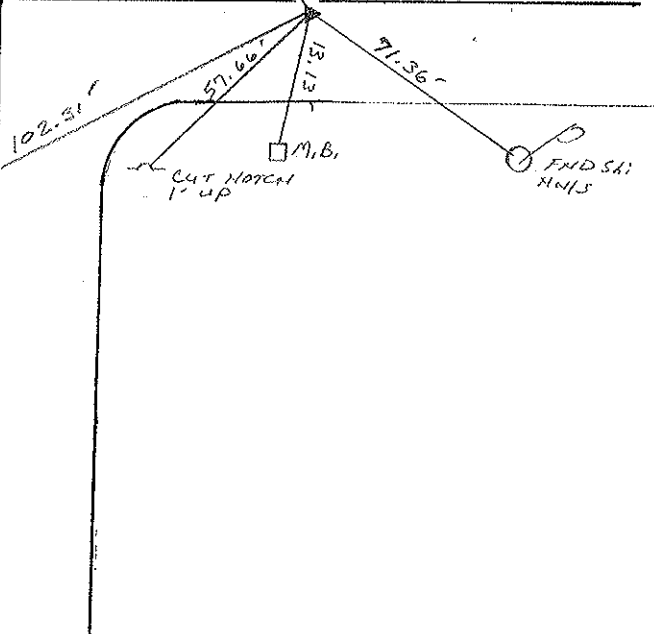
RESET PK WASHER  
 11-6-97  
 MB

Temp Ed 59



SR 182

54' MEAS



# O.D.O.T. DISTRICT 2 SURVEY OFFICE

PERSONNEL

NOTES Cronin  
 H.C. RIPPLE  
 R.G. BARBOUR  
GEYMAN

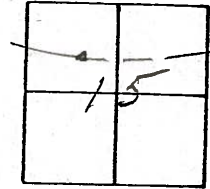
REFERENCE NO. 5  
 DRAWN 1/19/90  
 DATE 1/18/90  
 WEATHER OVERCAST-WINDY  
 TEMP. 38°

SHEET 15 OF \_\_\_\_\_

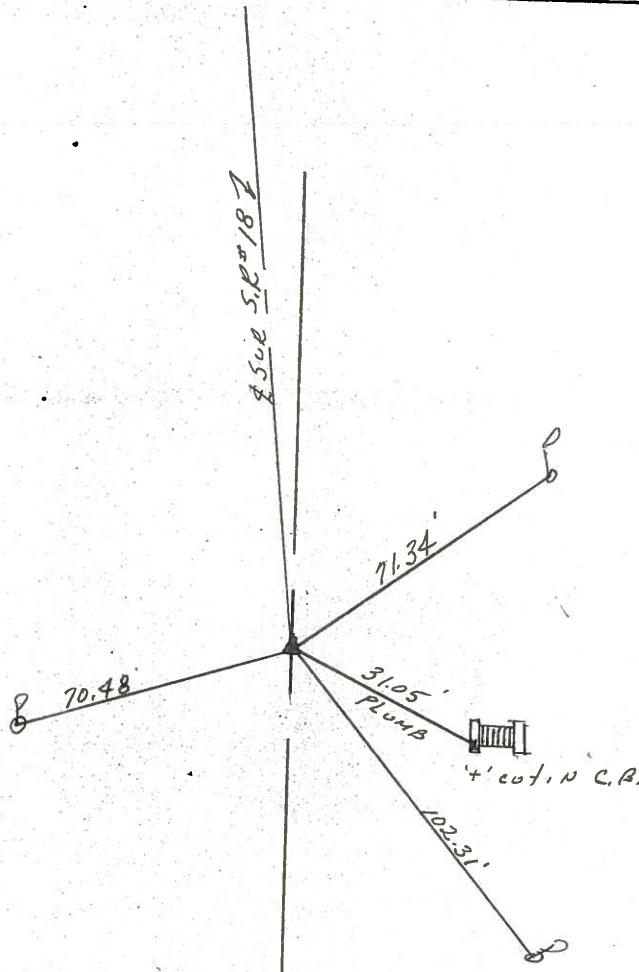
ROUTE #18  
 COUNTY SENECA  
 TOWNSHIP LOUDDON  
 SECTION 15  
 T 2 N R 13 E

TYPE MONUMENT P.K. & WASHER  
 ON SURFACE - BELOW \_\_\_\_\_  
 LEFT- & PAV'T. - RIGHT 7'±  
 TO \_\_\_\_\_ EDGE PAVEMENT  
 S.L.M. \_\_\_\_\_

13-B



P.I. SURVEY  
 $\Delta = 04^{\circ}58'00''$  Lt.  
217+13.97  
P.K. & WASHER ATOP  
MINE SPIKE



PERSONNEL TITLE PERSONNEL TITLE

COUNTY Seneca

DATE 10-16-68

Schneider

Messer

Barbour

Potts

S. R. 18

WEATHER Fair - Windy

SEC. Fostoria to Bascom

TEMP 80°

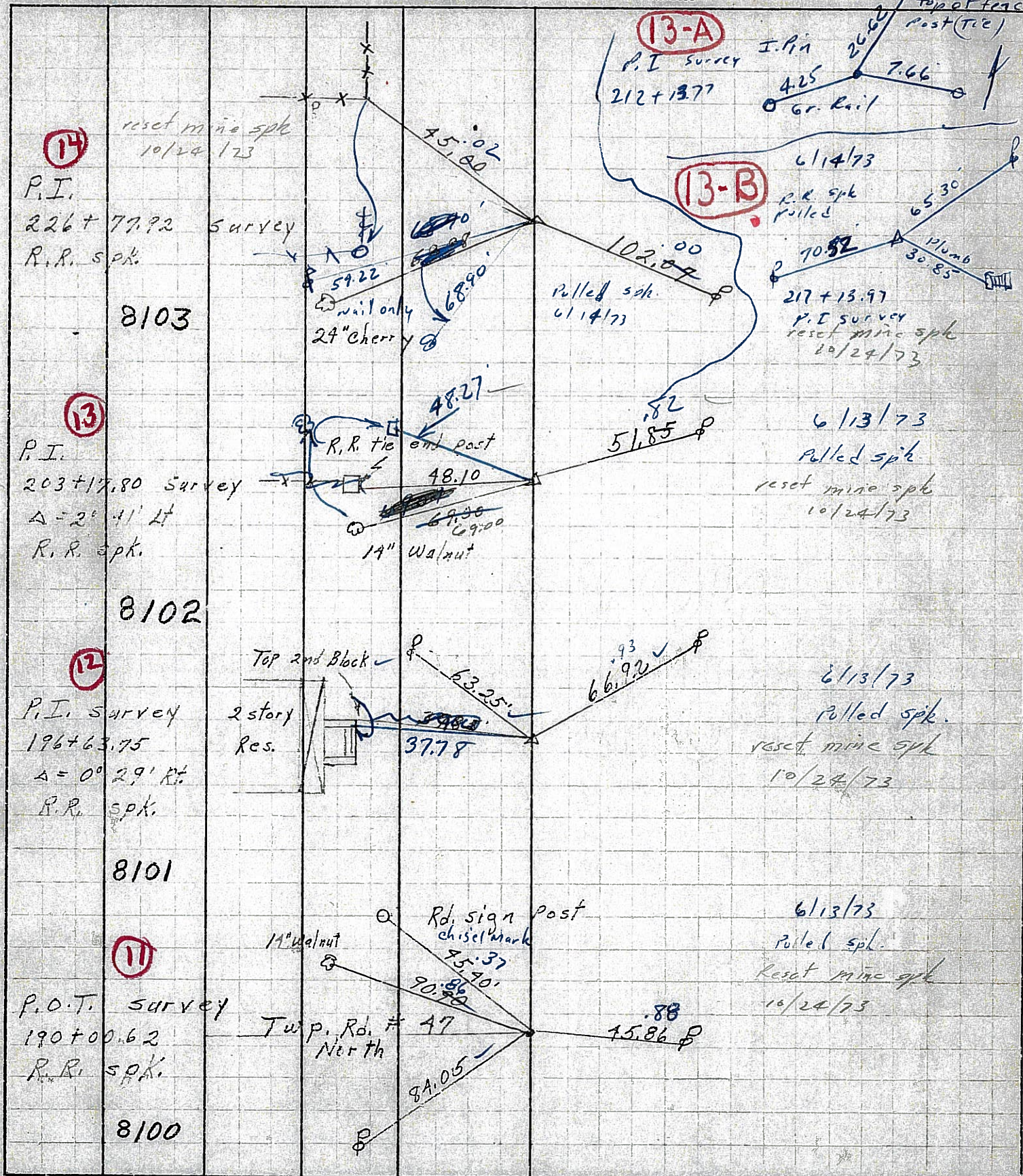
DESCRIPTION Ties for Control Points

LEFT

CENTER LINE

RIGHT

JOB NO.



PERSONNEL TITLE PERSONNEL TITLE

COUNTY Seneca

DATE Dec. 22, '58

HSH  
Cronin  
Leemaster

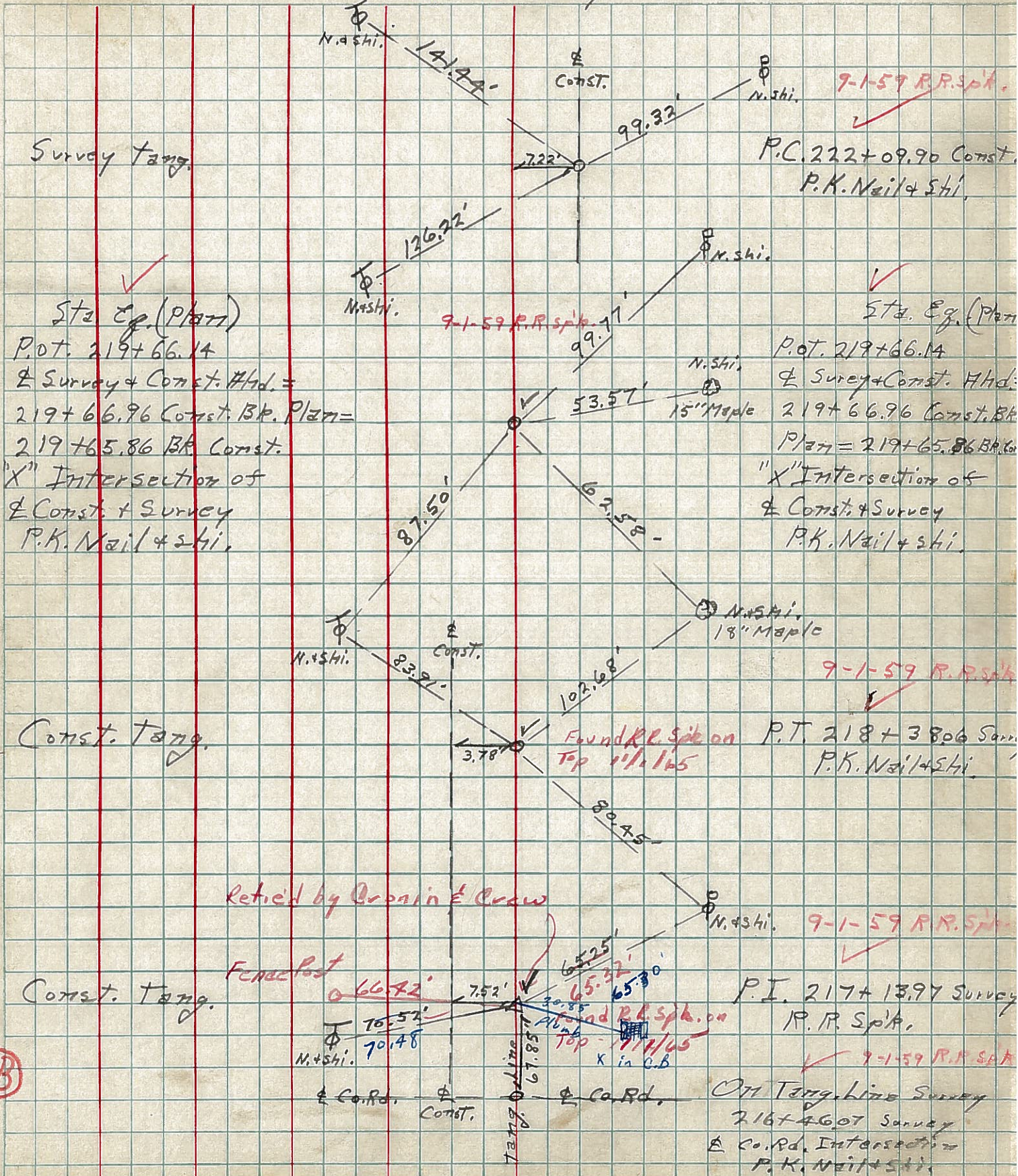
Kahr  
John K.

S. R. #18 Fosteria-Bascom Pl.  
SEC. Sen-18(1.79-8.60)

WEATHER Clear  
TEMP. 30°

DESCRIPTION Control Point Ties - Survey & Const.  
LEFT CENTER LINE - Survey RIGHT

JOB NO.



9-1-59 R.R. Spk.  
P.C. 222+09.90 Const.  
P.K. Nail & Shi.

Sta. Eq. (Plan)

Sta. Eq. (Plan)  
P.O.T. 219+66.14  
± Survey & Const. Hhd. =  
219+66.96 Const. Bk. Plan =  
219+65.86 Bk. Const.  
"X" Intersection of  
± Const. & Survey  
P.K. Nail & Shi.

P.O.T. 219+66.14  
± Survey & Const. Hhd.:  
219+66.96 Const. Bk.  
Plan = 219+65.86 Bk.  
"X" Intersection of  
± Const. & Survey  
P.K. Nail & Shi.

P.T. 218+3806 Surv.  
P.K. Nail & Shi.

9-1-59 R.R. Spk.

P.I. 217+13.97 Survey  
R.R. Spk.

9-1-59 R.R. Spk.

On Tang. Line Survey  
216+4607 Survey  
± Co. Rd. Intersection  
P.K. Nail & Shi.

13-B