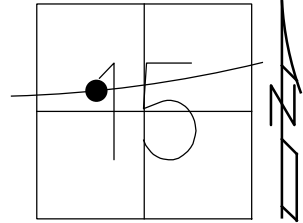


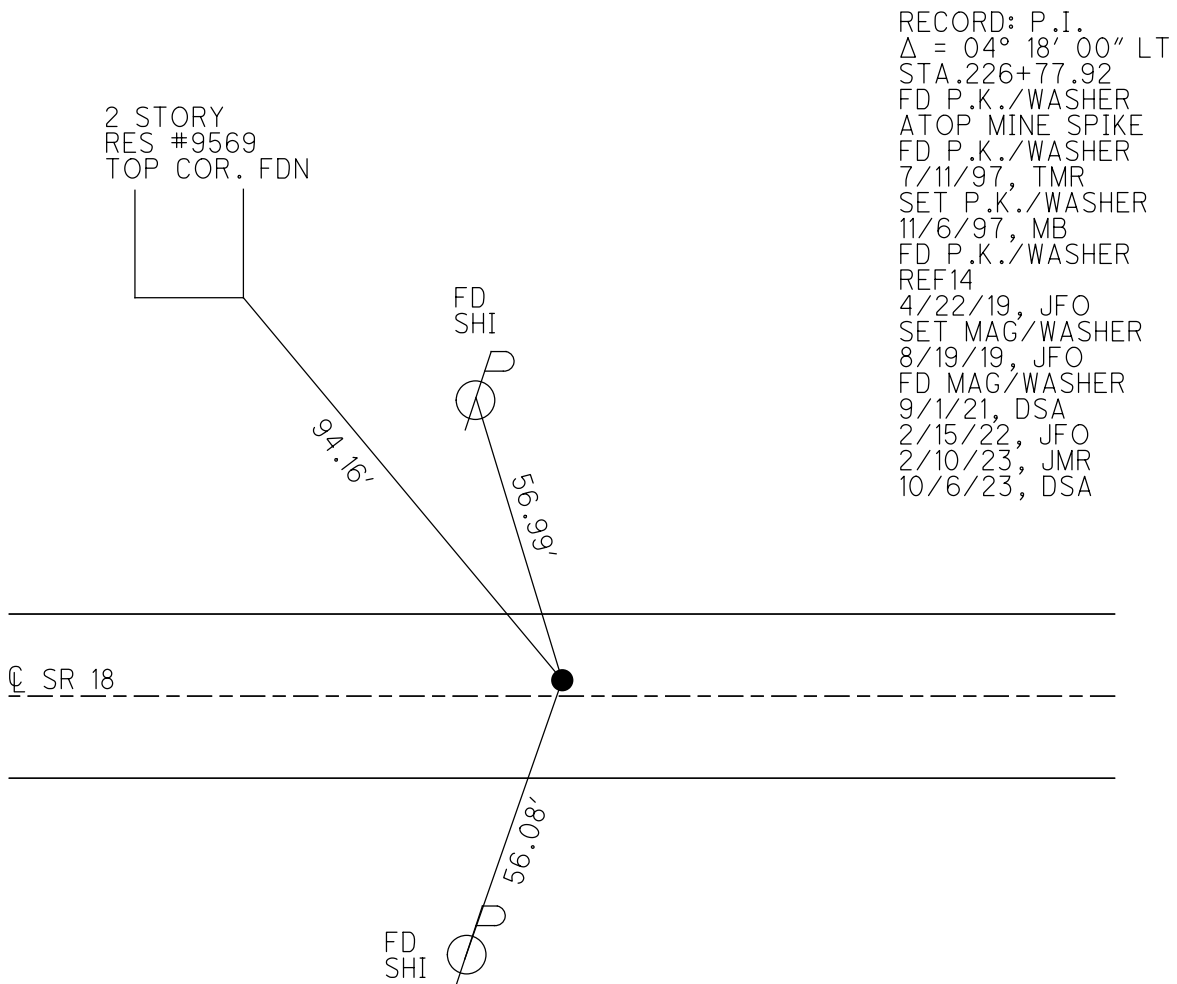
O.D.O.T. DISTRICT 2 SURVEY OFFICE (USE ONLY)

PERSONNEL _____ REFERENCE NO. 14 SHEET 11 OF 48
 NOTES AUBLE DATE 9/1/21 ROUTE SR 18
 H.C. NIESE WEATHER WNIDY COUNTY SENECA
 R.C. AUBLE TEMP. 76° TOWNSHIP LOUDON
 SECTION 15
 DWG BY RHOADES PID PVTRAIN T 2 N R 13 E

TYPE MONUMENT MAG/WASHER
 ON SURFACE - ~~BELOW~~ ON
 OFFSET \varnothing PAVEMENT 1.6' LT : ~~RT~~
10.4' TO LT EDGE PAVEMENT
 STATION: 226+77.92



HORZ. DATUM: NAD83(2011) GEOID: 2012A
 GRID: NORTHING: 535688.934 EASTING: 1733203.733



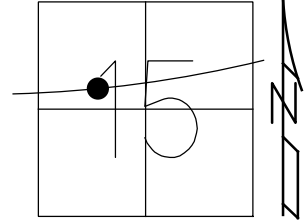
RECORD: P.I.
 $\Delta = 04^{\circ} 18' 00''$ LT
 STA. 226+77.92
 FD P.K./WASHER
 ATOP MINE SPIKE
 FD P.K./WASHER
 7/11/97, TMR
 SET P.K./WASHER
 11/6/97, MB
 FD P.K./WASHER
 REF14
 4/22/19, JFO
 SET MAG/WASHER
 8/19/19, JFO
 FD MAG/WASHER
 9/1/21, DSA
 2/15/22, JFO
 2/10/23, JMR
 10/6/23, DSA

O.D.O.T. DISTRICT 2 SURVEY OFFICE (USE ONLY)

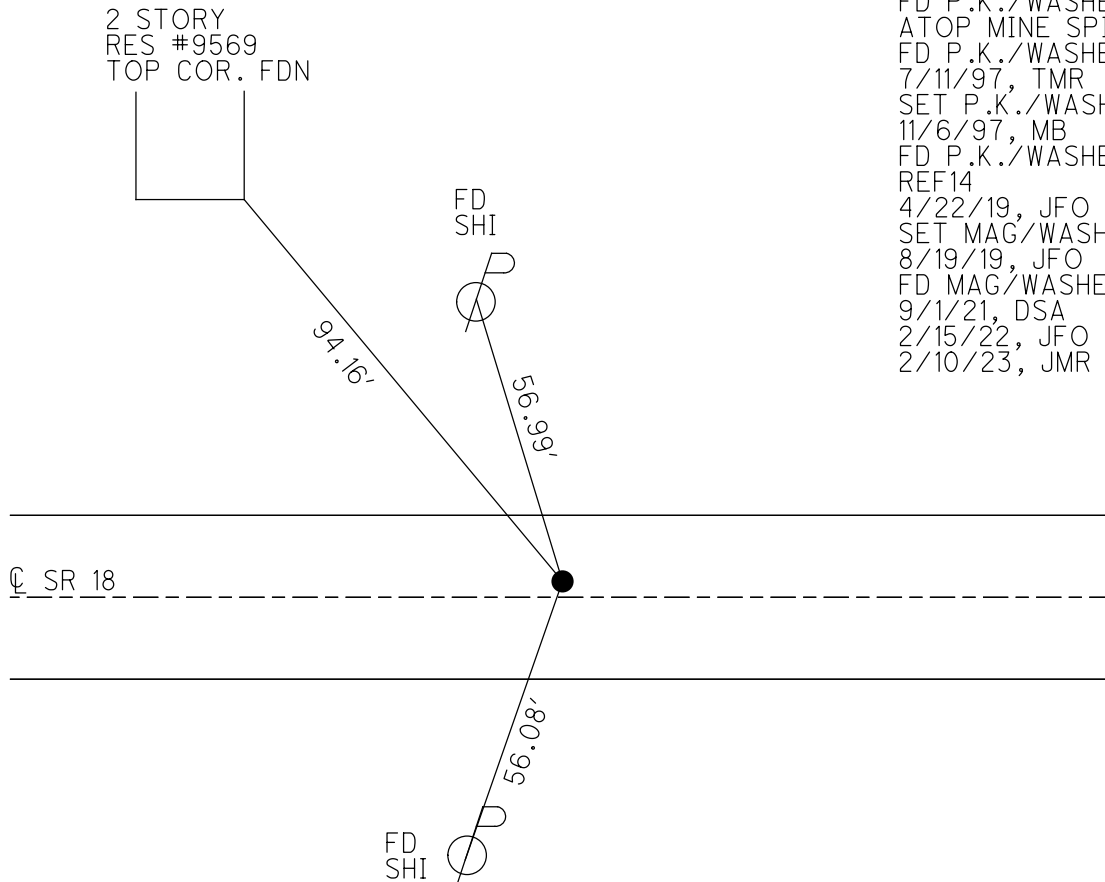
PERSONNEL _____ REFERENCE NO. 14 SHEET 11 OF 48
 NOTES AUBLE DATE 9/1/21 ROUTE SR 18
 H.C. NIESE WEATHER WNIDY COUNTY SENECA
 R.C. AUBLE TEMP. 76° TOWNSHIP LOUDON
 DWG BY RHOADES PID PVTRAIN SECTION 15
 T 2 N R 13 E

TYPE MONUMENT MAG/WASHER
 ON SURFACE - ~~BELOW~~ ON
 OFFSET Q PAVEMENT 1.6' LT : ~~RT~~
10.4' TO LT EDGE PAVEMENT
 STATION: 226+77.92

HORIZ.DATUM: NAD83(2011) GEOID: 2012A
 GRID: NORTHING: 535688.934 EASTING: 1733203.733



RECORD: P.I.
 $\Delta = 04^{\circ} 18' 00''$ LT
 STA.226+77.92
 FD P.K./WASHER
 ATOP MINE SPIKE
 FD P.K./WASHER
 7/11/97, TMR
 SET P.K./WASHER
 11/6/97, MB
 FD P.K./WASHER
 REF14
 4/22/19, JFO
 SET MAG/WASHER
 8/19/19, JFO
 FD MAG/WASHER
 9/1/21, DSA
 2/15/22, JFO
 2/10/23, JMR

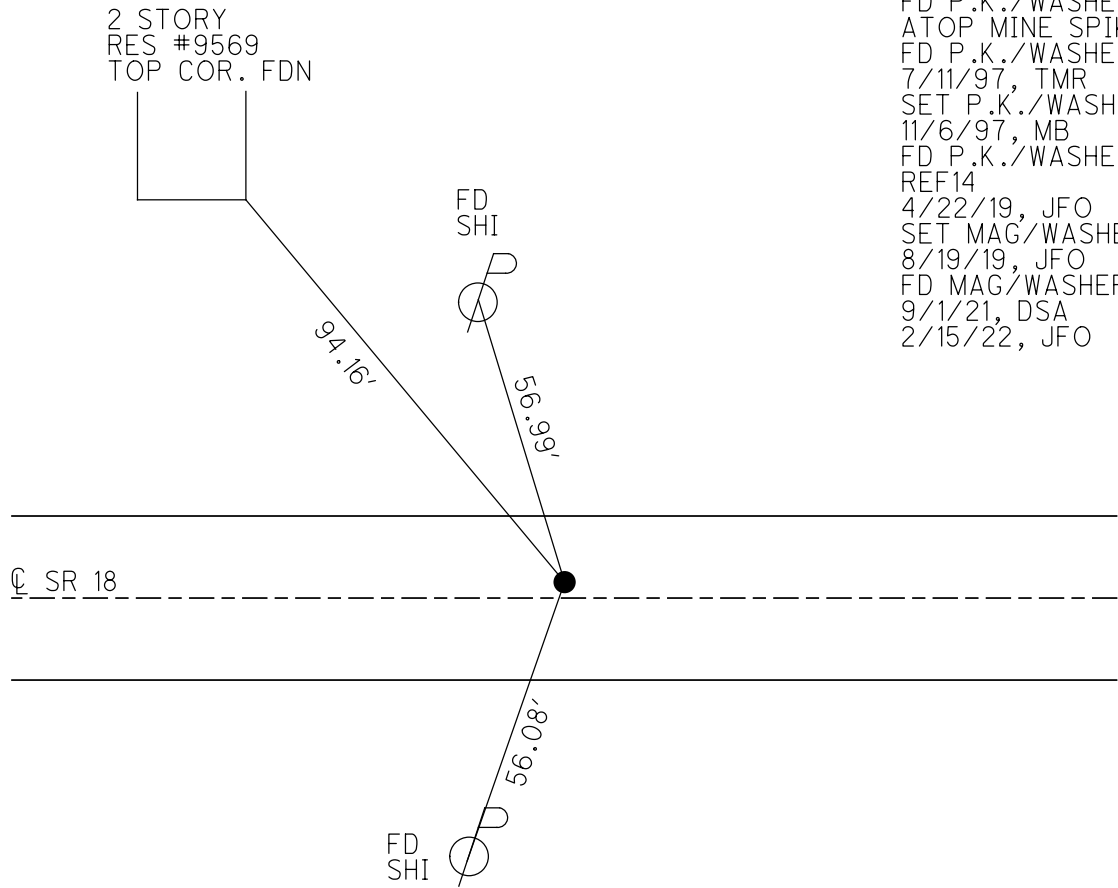
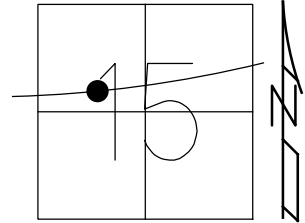


O.D.O.T. DISTRICT 2 SURVEY OFFICE (USE ONLY)

PERSONNEL _____ REFERENCE NO. 14 SHEET 11 OF 48
 NOTES AUBLE DATE 9/1/21 ROUTE SR 18
 H.C. NIESE WEATHER WNIDY COUNTY SENECA
 R.C. AUBLE TEMP. 76° TOWNSHIP LOUDON
 DWG BY RHOADES PID PVTRAIN SECTION 15
 T 2 N R 13 E

TYPE MONUMENT MAG/WASHER
 ON SURFACE - ~~BELOW~~ ON
 OFFSET CL PAVEMENT 1.6' LT : ~~RT~~
10.4' TO LT EDGE PAVEMENT
 STATION: 226+77.92

HORIZ.DATUM: NAD83(2011) GEOID: 2012A
 GRID: NORTHING: 535688.934 EASTING: 1733203.733



RECORD: P.I.
 $\Delta = 04^{\circ} 18' 00''$ LT
 STA.226+77.92
 FD P.K./WASHER
 ATOP MINE SPIKE
 FD P.K./WASHER
 7/11/97, TMR
 SET P.K./WASHER
 11/6/97, MB
 FD P.K./WASHER
 REF14
 4/22/19, JFO
 SET MAG/WASHER
 8/19/19, JFO
 FD MAG/WASHER
 9/1/21, DSA
 2/15/22, JFO

O.D.O.T. DISTRICT 2 SURVEY OFFICE (USE ONLY)

PERSONNEL

REFERENCE NO. 14

SHEET 11 OF 48

NOTES RHOADES DATE 8/19/19
 H.C. O'DONNELL WEATHER SUNNY
 R.C. AUBLE TEMP. 70°

ROUTE SR 18
 COUNTY SENECA
 TOWNSHIP LOUDON
 SECTION 15
 T 2 N R 13 E

DWG BY NIESE PID NO PID

TYPE MONUMENT MAG/WASHER

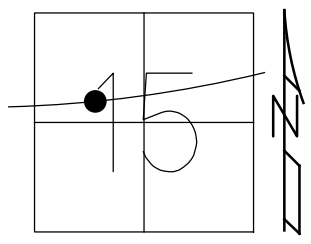
ON SURFACE - ~~BELOW~~ ON

OFFSET Q PAVEMENT 1.6' LT : ~~RT~~
10.4' TO LT EDGE PAVEMENT

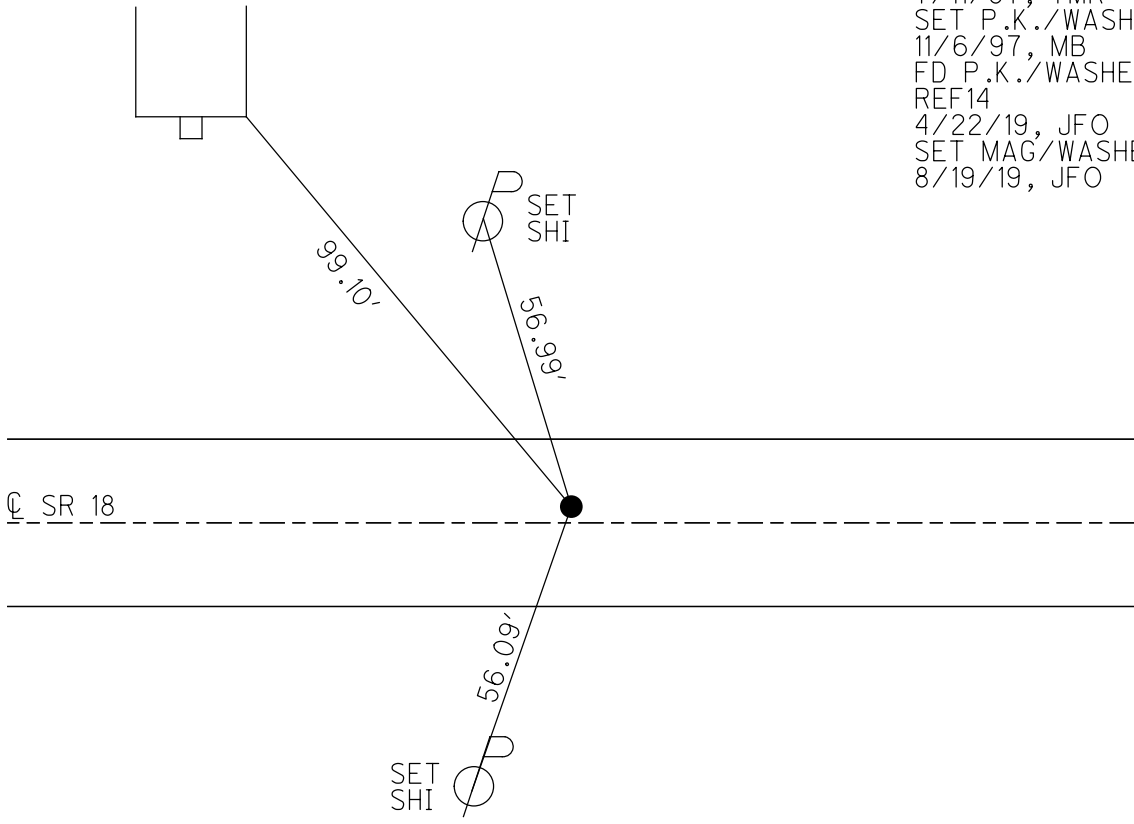
STATION: 226+77.92

HORZ. DATUM: NAD83(2011) GEOID: 2012A

GRID: NORTHING: 535688.934 EASTING: 1733203.733



2 STORY
 RES #9569
 TOP COR. FDN



RECORD: P.I.
 $\Delta = 04^{\circ} 18' 00''$ LT
 STA. 226+77.92
 FD P.K./WASHER
 ATOP MINE SPIKE
 FD P.K./WASHER
 7/11/97, TMR
 SET P.K./WASHER
 11/6/97, MB
 FD P.K./WASHER
 REF14
 4/22/19, JFO
 SET MAG/WASHER
 8/19/19, JFO

O.D.O.T. DISTRICT 2 SURVEY OFFICE

PERSONNEL

REFERENCE NO. 14

SHEET 16 OF 22

NOTES BARNHISEL

H.C. CANTERBURY

DATE 7-11-97

ROUTE 18

R.C. ROUSOS

WEATHER SUNNY

COUNTY SENECA

P WEAVER

TEMP. 77.5°

TOWNSHIP LODGE

Drawn by Rousos

SECTION 15

T2 N R 13 E

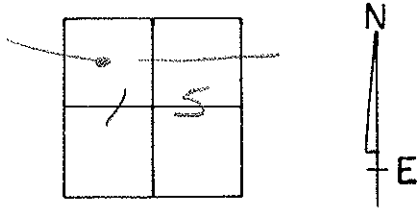
TYPE MONUMENT PK & WASHER

ON SURFACE - ~~BELOW~~ SURFACE

LEFT - CL PAV'T. - RIGHT LIG

10.4 TO LT EDGE PAVEMENT

S.L.M. 7+289.0 SLK



RESET PK & WASHER
11-6-97
MB

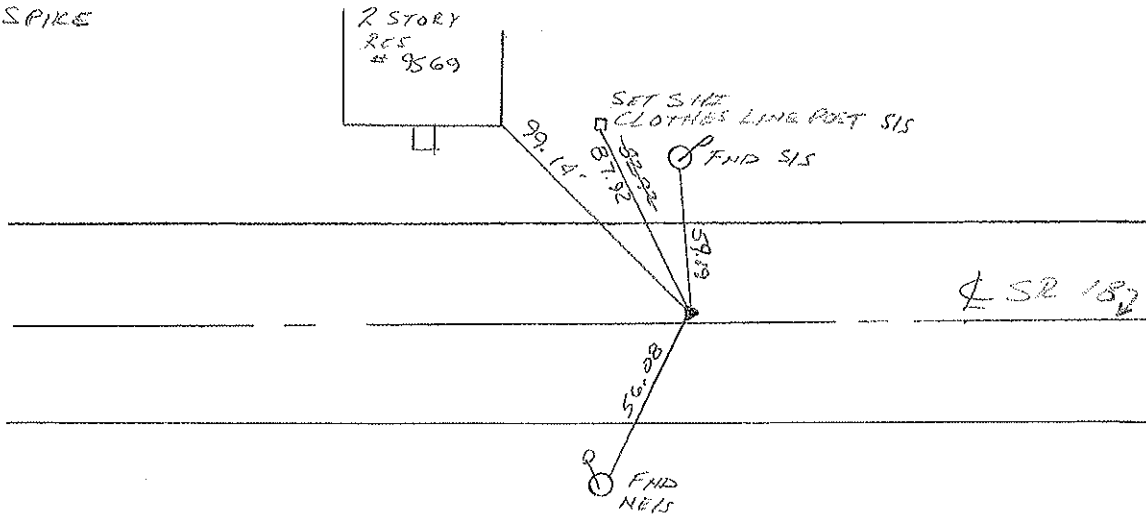
P.I. SURVEY

$\Delta = 04^{\circ} 18' 00''$ LT

226+77.92

PK & WASHER ATOP

MINE SPIKE



O.D.O.T. DISTRICT 2 SURVEY OFFICE

PERSONNEL

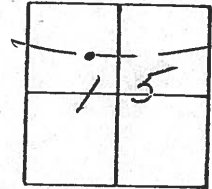
NOTES CROWIN
H.C. RIPPLE
R.G. BARBOUR
GEYMAN

REFERENCE NO. 14
DRAWN 1/19/90
DATE 1/22/90
WEATHER OVERCAST - WINDY
TEMP. 38°

SHEET 16 OF _____

ROUTE #18
COUNTY SENECA
TOWNSHIP LOODON
SECTION 15
T 2 N R 13 E

TYPE MONUMENT P.K. & WASHER
ON SURFACE - BELOW ON SURFACE
LEFT - € PAV'T. - RIGHT 2'
TO _____ EDGE PAVEMENT
S.L.M. _____



E. 502.5 P. #18

P.I. SURVEY
Δ = 04° 18' 00" LT.
226 + 77.92
P.K. & WASHER atop
MINE SPIRE



PERSONNEL TITLE PERSONNEL TITLE

COUNTY Seneca DATE 10-16-68

Schneider

Messer

Barbour

Peets

S. R. 18

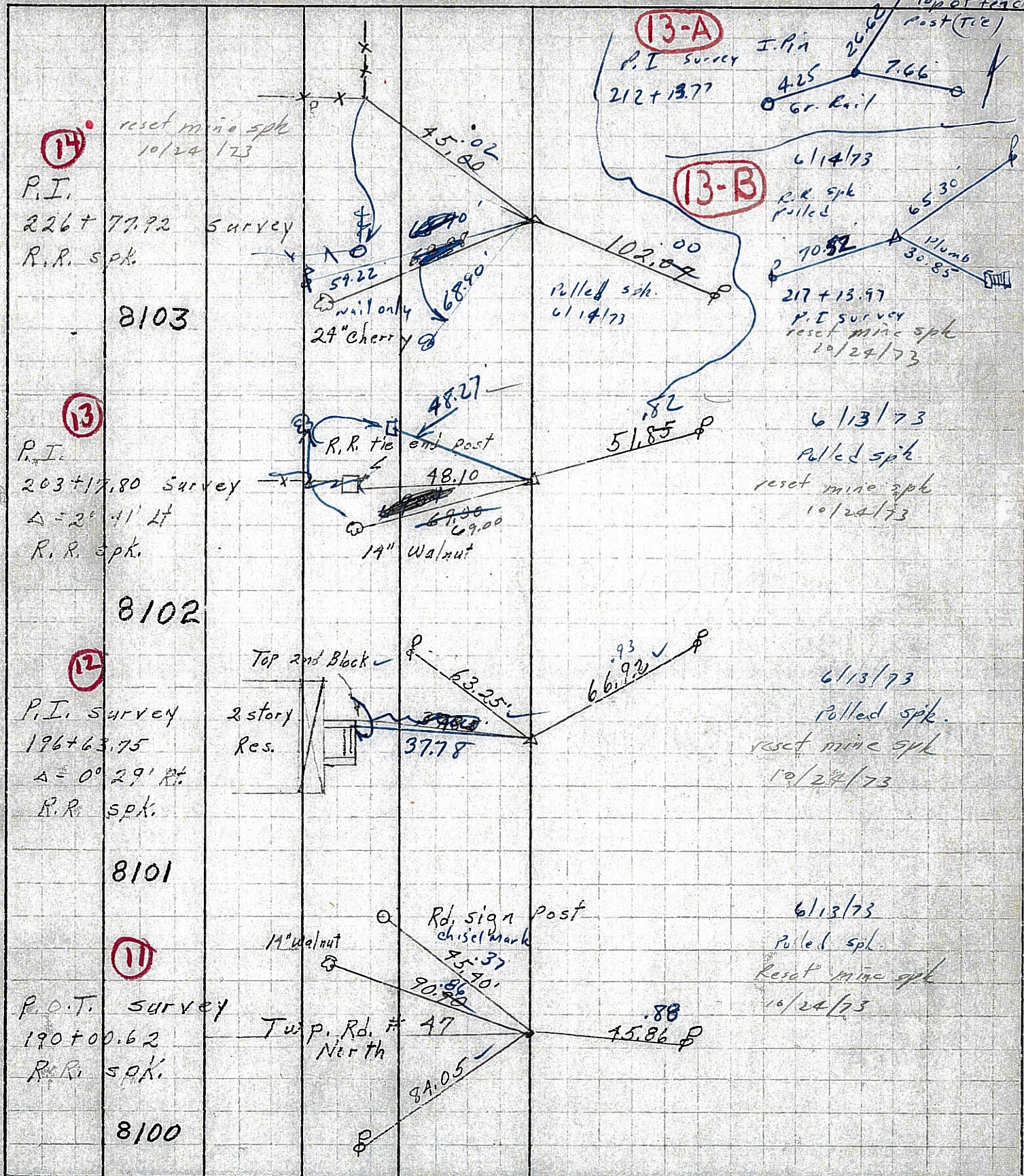
WEATHER Fair - Windy

SEC. Fosteria to Bascom

TEMP. 80°

DESCRIPTION Ties for Control Points

LEFT CENTER LINE RIGHT JOB NO.



PERSONNEL TITLE PERSONNEL TITLE

COUNTY Seneca

DATE 10-16-68

Schneider

Mosser

Barbour

Potts

S. R. 18

WEATHER Fair - windy

SEC. Fostoria to Bascom

TEMP. 80°

DESCRIPTION Ties for Control Points

JOB NO.

LEFT

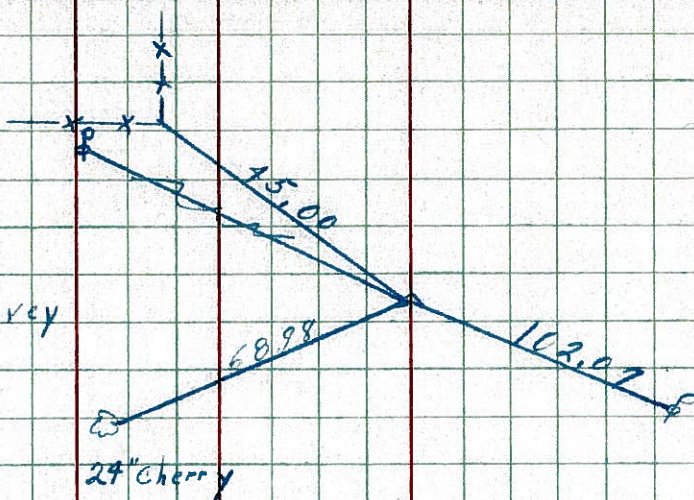
CENTER LINE

RIGHT

14

P.I.
226 + 77.92 Survey
R.R. spk.

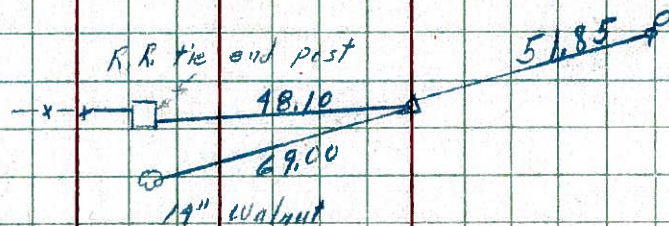
8103



13

P.I.
203 + 17.80 Survey
 $\Delta = 2^\circ 41' 21''$
R.R. spk.

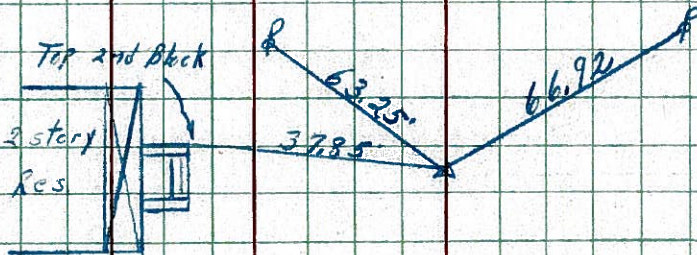
8102



12

P.I. survey
196 + 63.75
 $\Delta = 0^\circ 29' 14''$
R.R. spk.

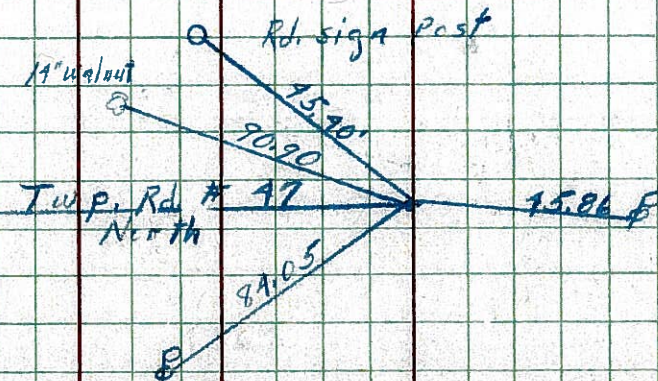
8101



11

P.O.T. survey
190 + 00.62
R.R. spk.

8100

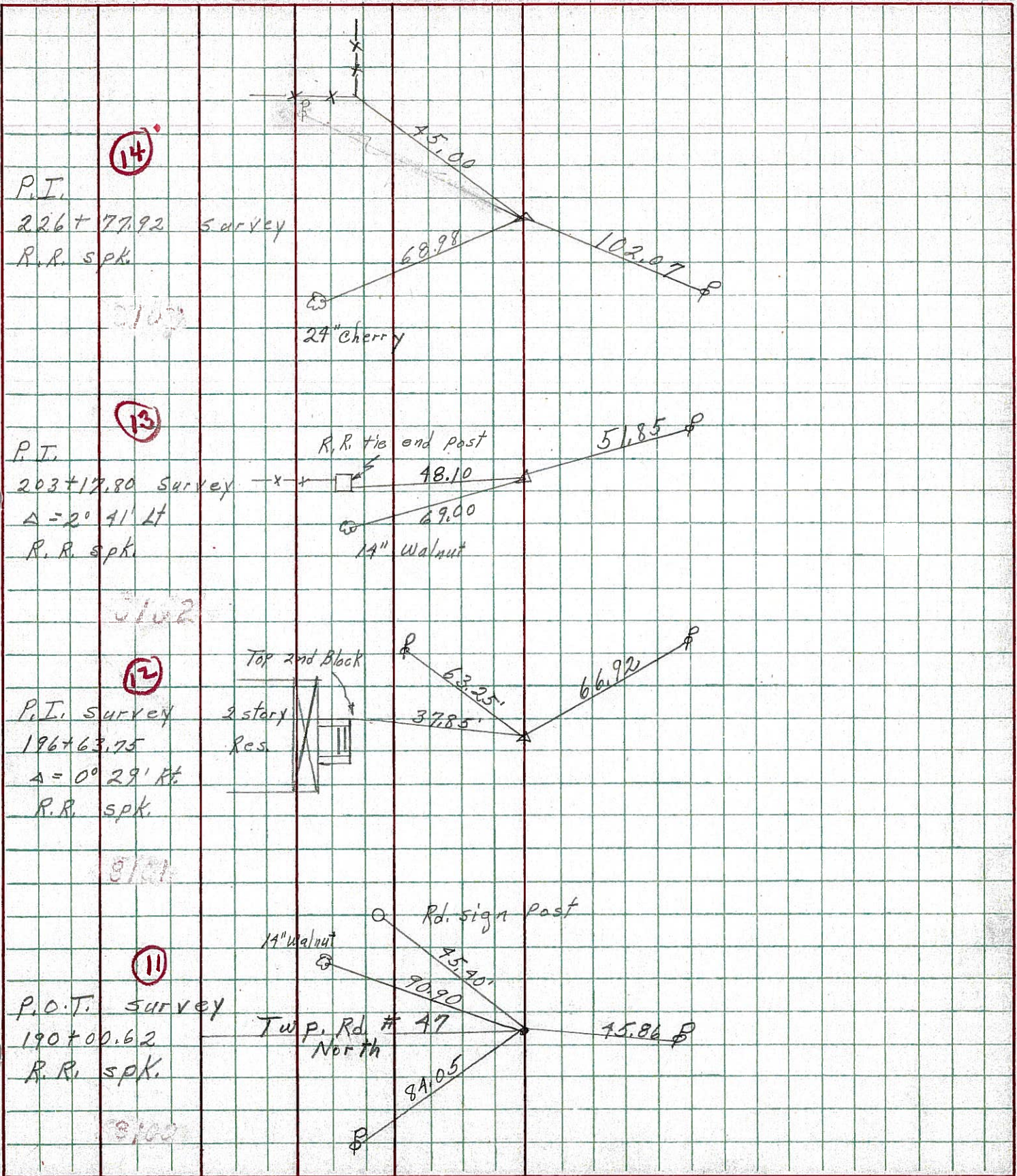


PERSONNEL TITLE PERSONNEL TITLE
 Schneider _____
 Mosser _____
 Barbour _____
 Potts _____

COUNTY Seneca DATE 10-16-68
 S. R. 18 WEATHER Fair-windy
 SEC. Fostoria to Bascom TEMP. 80°

DESCRIPTION Ties for Control Points JOB NO. _____

LEFT CENTER LINE RIGHT



234-5211

PERSONNEL	TITLE	PERSONNEL	TITLE	COUNTY	DATE	WEATHER	TEMP.
HSH				Serrano	Dec. 23, '58	Clear	40°
Cronin				S. R. #18 Fosteria - Bascom Rd			
Leemaster		Lehr		SEC. 7-18 (179-8.60)			
		John K.					
DESCRIPTION	Control Point Ties - 2 Survey + Const.			JOB NO.			
	LEFT	CENTER LINE - Survey	RIGHT				

