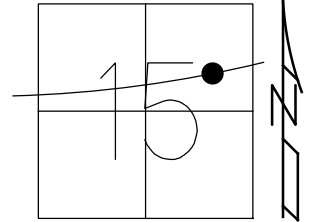


O.D.O.T. DISTRICT 2 SURVEY OFFICE (USE ONLY)

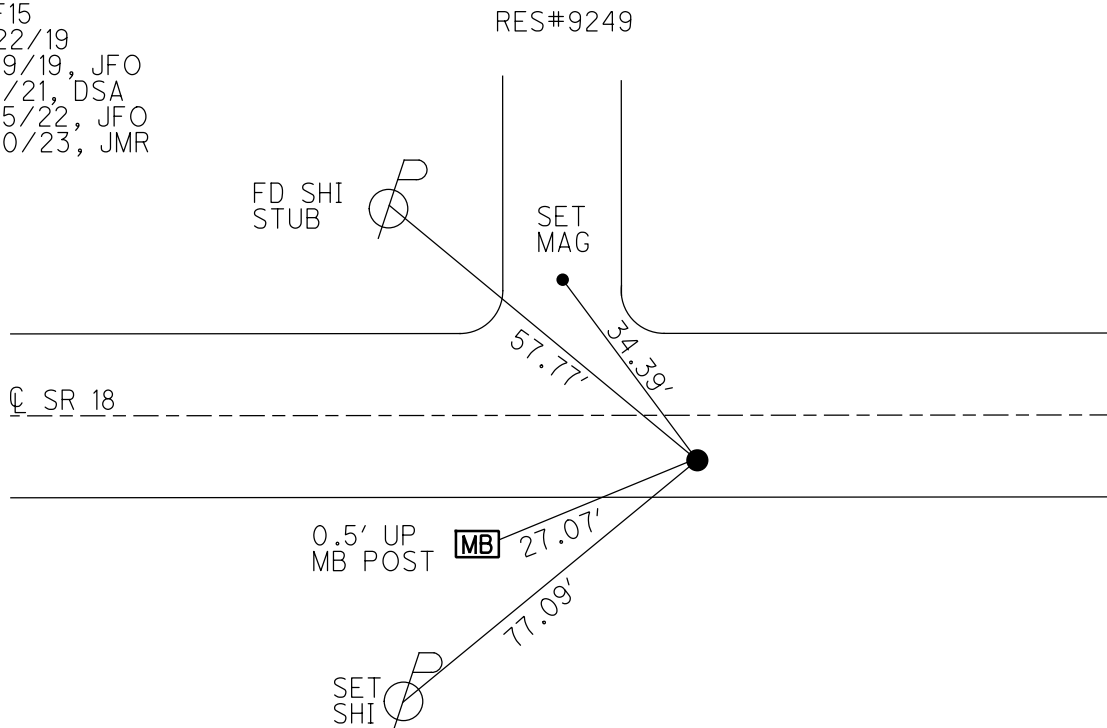
PERSONNEL _____ REFERENCE NO. 15 SHEET 12 OF 48
 NOTES AUBLE DATE 9/1/21 ROUTE SR 18
 H.C. NIESE WEATHER WINDY COUNTY SENECA
 R.C. AUBLE TEMP. 76° TOWNSHIP LOUDON
 DWG BY RHOADES PID PVTRAIN SECTION 15
 T 2 N R 13 E

TYPE MONUMENT P.K./WASHER
 ON SURFACE - ~~BELOW~~ ON
 OFFSET 4.5' TO RT PAVEMENT 7.2' ± : RT
TO RT EDGE PAVEMENT



STATION: 242+80.39
 HORZ. DATUM: NAD83(2011) GEOID: 2012A
 GRID: NORTHING: 535676.918 EASTING: 1734805.713

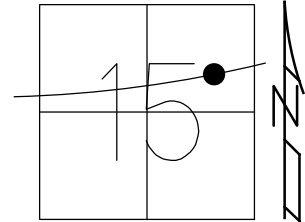
RECORD: P.I.
 $\Delta = 09^{\circ} 54' 00''$ LT
 STA. 242+80.39
 FD P.K./WASHER
 7/11/97, MB
 SET P.K./WASHER
 11/6/97, MB
 FD P.K./WASHER
 REF15
 4/22/19
 8/19/19, JFO
 9/1/21, DSA
 2/15/22, JFO
 2/10/23, JMR



O.D.O.T. DISTRICT 2 SURVEY OFFICE (USE ONLY)

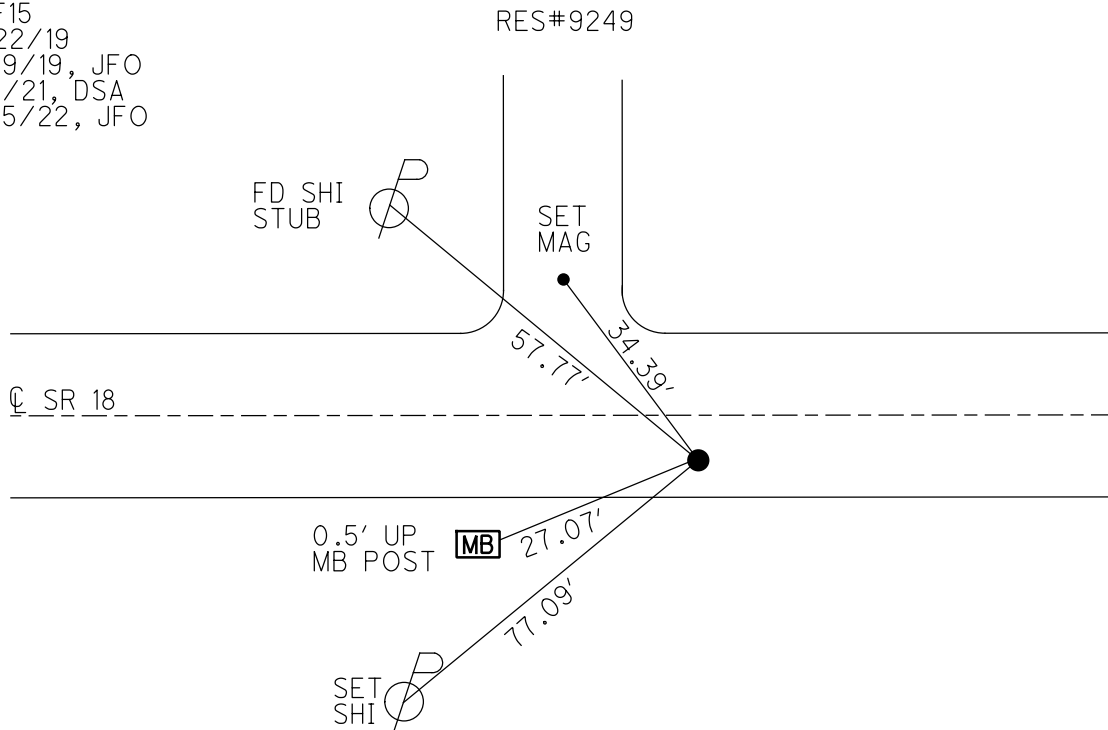
PERSONNEL _____ REFERENCE NO. 15 SHEET 12 OF 48
 NOTES AUBLE DATE 9/1/21 ROUTE SR 18
 H.C. NIESE WEATHER WINDY COUNTY SENECA
 R.C. AUBLE TEMP. 76° TOWNSHIP LOUDON
 DWG BY RHOADES PID PVTRAIN SECTION 15
 T 2 N R 13 E

TYPE MONUMENT P.K./WASHER
 ON SURFACE - ~~BELOW~~ ON
 OFFSET CL PAVEMENT 7.2' ~~LT~~ : RT
4.5' TO RT EDGE PAVEMENT
 STATION: 242+80.39



HORZ. DATUM: NAD83(2011) GEOID: 2012A
 GRID: NORTHING: 535676.918 EASTING: 1734805.713

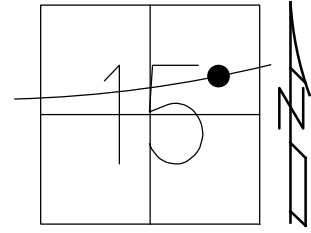
RECORD: P.I.
 $\Delta = 09^\circ 54' 00''$ LT
 STA. 242+80.39
 FD P.K./WASHER
 7/11/97, MB
 SET P.K./WASHER
 11/6/97, MB
 FD P.K./WASHER
 REF15
 4/22/19
 8/19/19, JFO
 9/1/21, DSA
 2/15/22, JFO



O.D.O.T. DISTRICT 2 SURVEY OFFICE (USE ONLY)

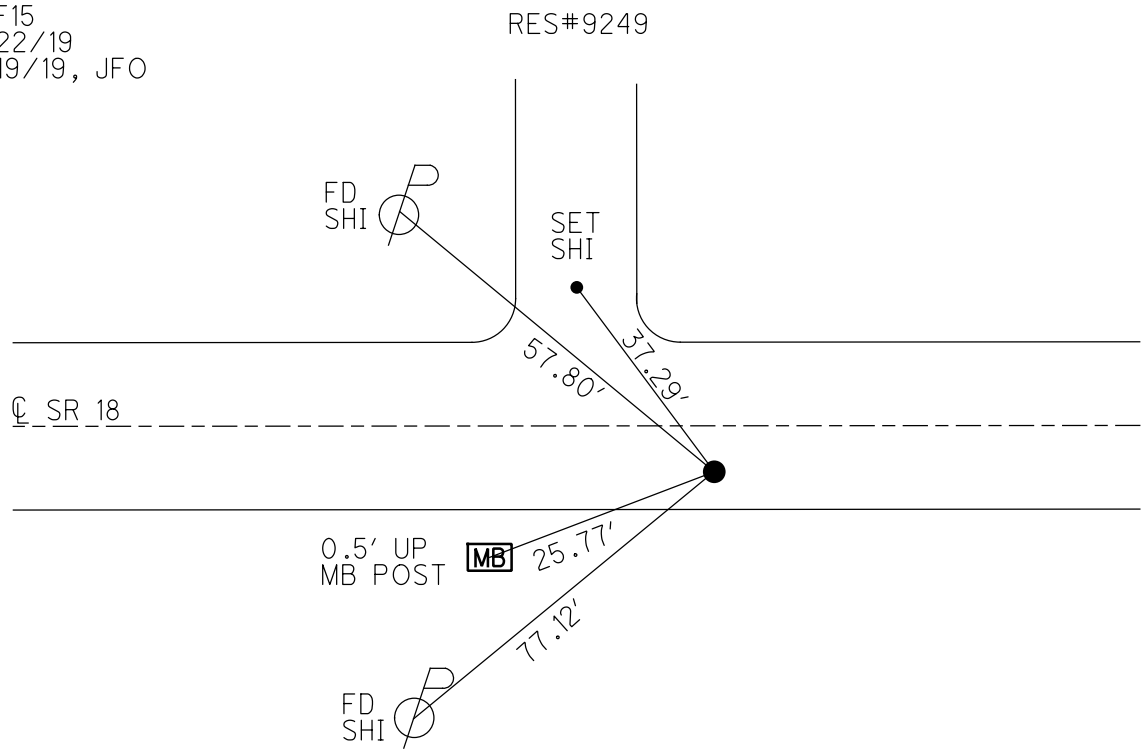
PERSONNEL _____ REFERENCE NO. 15 SHEET 12 OF 48
 NOTES BARNHISEL DATE 7/11/97 ROUTE SR 18
 H.C. CANTERBURY WEATHER SUNNY COUNTY SENECA
 R.C. ROUSOS TEMP. 75° TOWNSHIP LOUDON
 SECTION 15
 DWG BY NIESE PID NO PID T 2 N R 13 E

TYPE MONUMENT P.K./WASHER
 ON SURFACE - ~~BELOW~~ ON
 OFFSET 7.2' ~~LT~~ : RT
4.5' TO RT EDGE PAVEMENT
 STATION: 242+80.39



HORIZ.DATUM: NAD83(2011) GEOID: 2012A
 GRID: NORTHING: 535676.918 EASTING: 1734805.713

RECORD: P.I.
 $\Delta = 09^{\circ} 54' 00''$ LT
 STA.242+80.39
 FD P.K./WASHER
 7/11/97, MB
 SET P.K./WASHER
 11/6/97, MB
 FD P.K./WASHER
 REF15
 4/22/19
 8/19/19, JFO



O.D.O.T. DISTRICT 2 SURVEY OFFICE

PERSONNEL

REFERENCE NO. 15

SHEET 17 OF 22

NOTES BARNHISEL

H.C. CANTERBURY

DATE 7-11-97

ROUTE 18

R.C. Rousar

WEATHER SUNNY

COUNTY SENECA

P. WEAVER

TEMP. +75°

TOWNSHIP LOUDDON

DRAWN BY Rousar

SECTION 15

T2N R13E

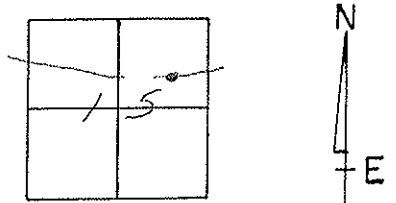
TYPE MONUMENT PK WASHER

ON SURFACE - ~~BELOW~~ ON SURFACE

~~LEFT~~ C. PAV'T. - RIGHT 7.2 RT

4.5 TO RT EDGE PAVEMENT

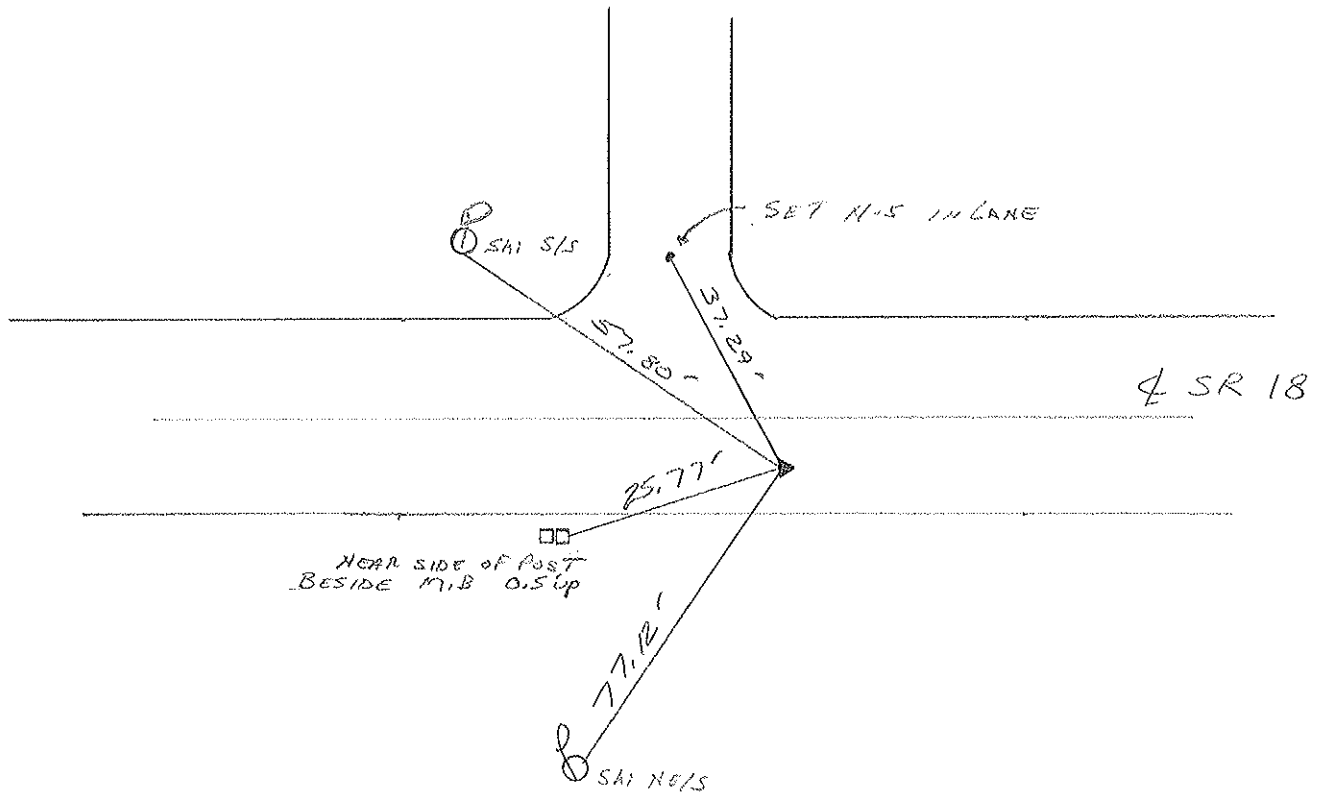
S.L.M. 74 777.7 SLK



RESET PK/WASHER
11-6-97
MB

PI SURVEY
 $\Delta = 09^{\circ}54'00.17$
292+80.39

RES #9249



O.D.O.T. DISTRICT 2 SURVEY OFFICE

PERSONNEL

NOTES CROWIN
H.C. RIPPLE
R.C. BARBOUR
GEYMAN

REFERENCE NO. 15

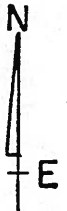
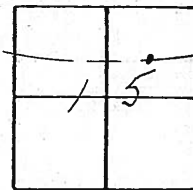
DRAWN 11/19/90
DATE 1/22/90
WEATHER OVERCAST-WINDY
TEMP. 37°

SHEET 17 OF

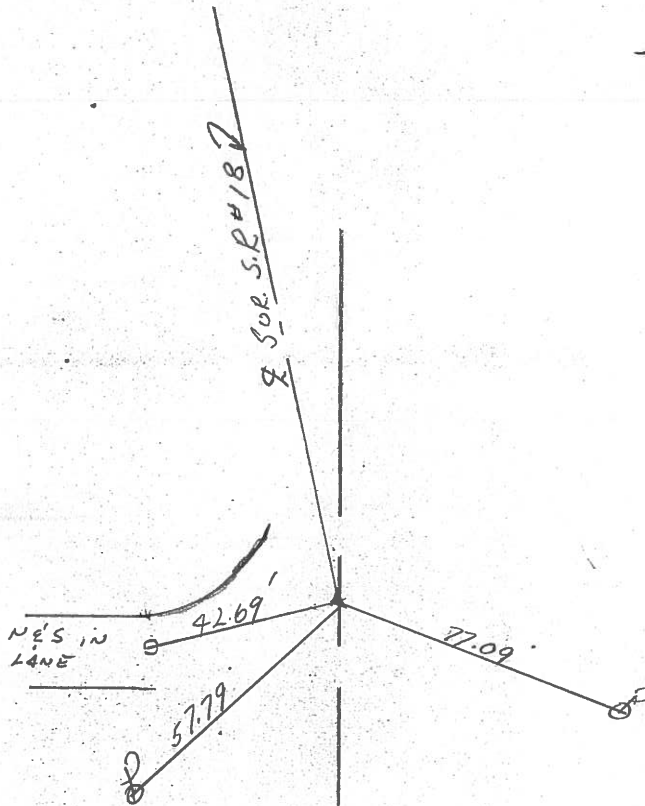
ROUTE #18
COUNTY SENECA
TOWNSHIP LOU DON
SECTION 15

T 2 N R 13 E

TYPE MONUMENT P.K. WASHER
ON SURFACE - BELOW
LEFT - & PAV'T. - RIGHT ±
TO EDGE PAVEMENT
S.L.M.

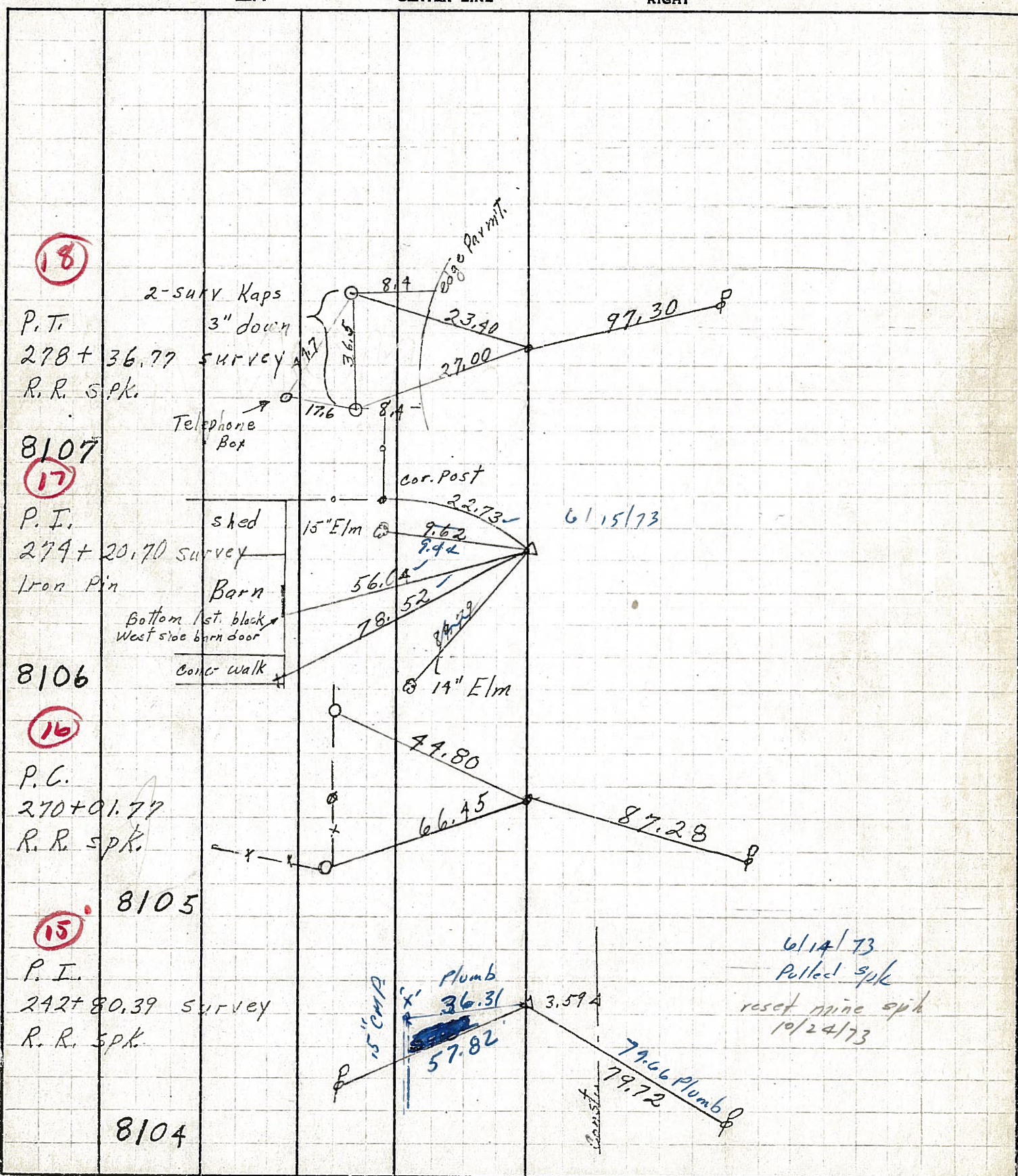


P.E. SURVEY
A = 09° 54' 00" Lt.
242 ± 80.39



PERSONNEL	TITLE	PERSONNEL	TITLE	COUNTY	DATE	WEATHER	TEMP.
Schneider		Potts		Seneca	10-17-68	Cloudy	60
Masser				S. R. 18			
Barbour				SEC. Foster to Bascom			
Redding							

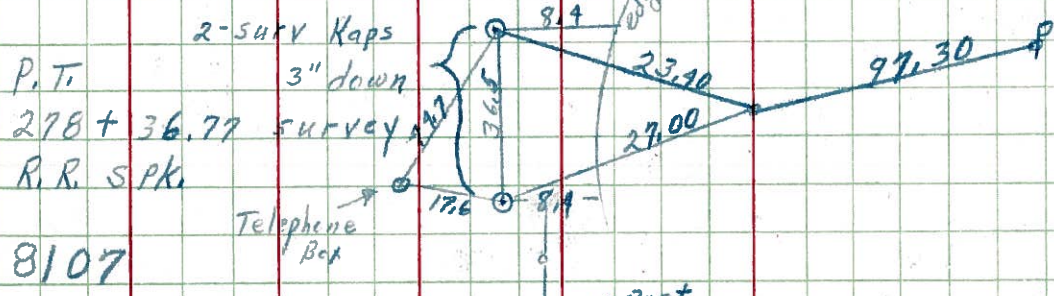
DESCRIPTION Ties for Control Points JOB NO. _____



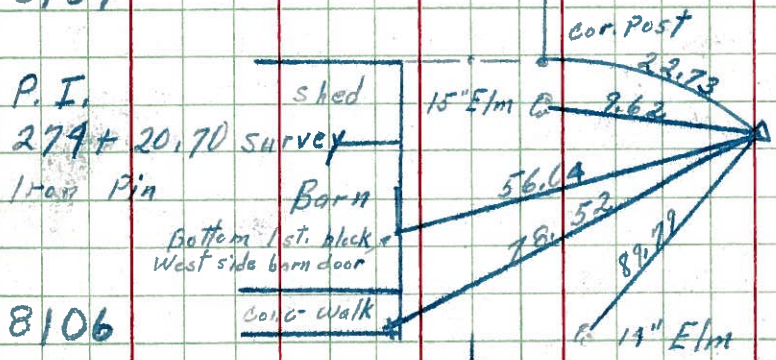
PERSONNEL	TITLE	PERSONNEL	TITLE	COUNTY	DATE
Schneider		Potts		Seneca	10-17-68
Mosser				S. R. 18	WEATHER Cloudy
Barbour				SEC. Fostoria To Bascom	TEMP. 60°
Redding					

DESCRIPTION: Ties for Control Points

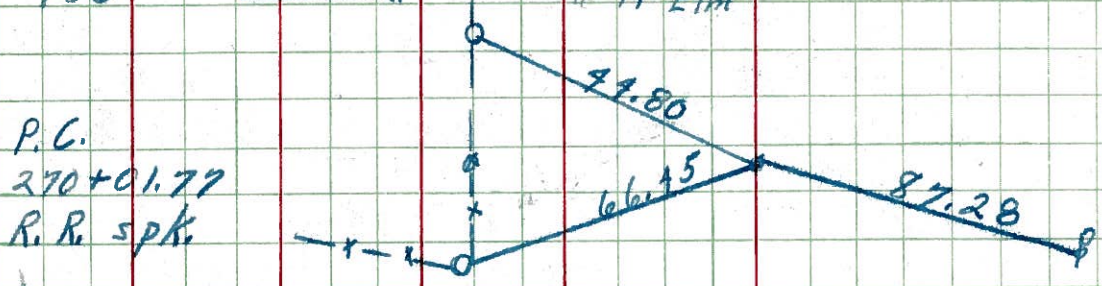
18



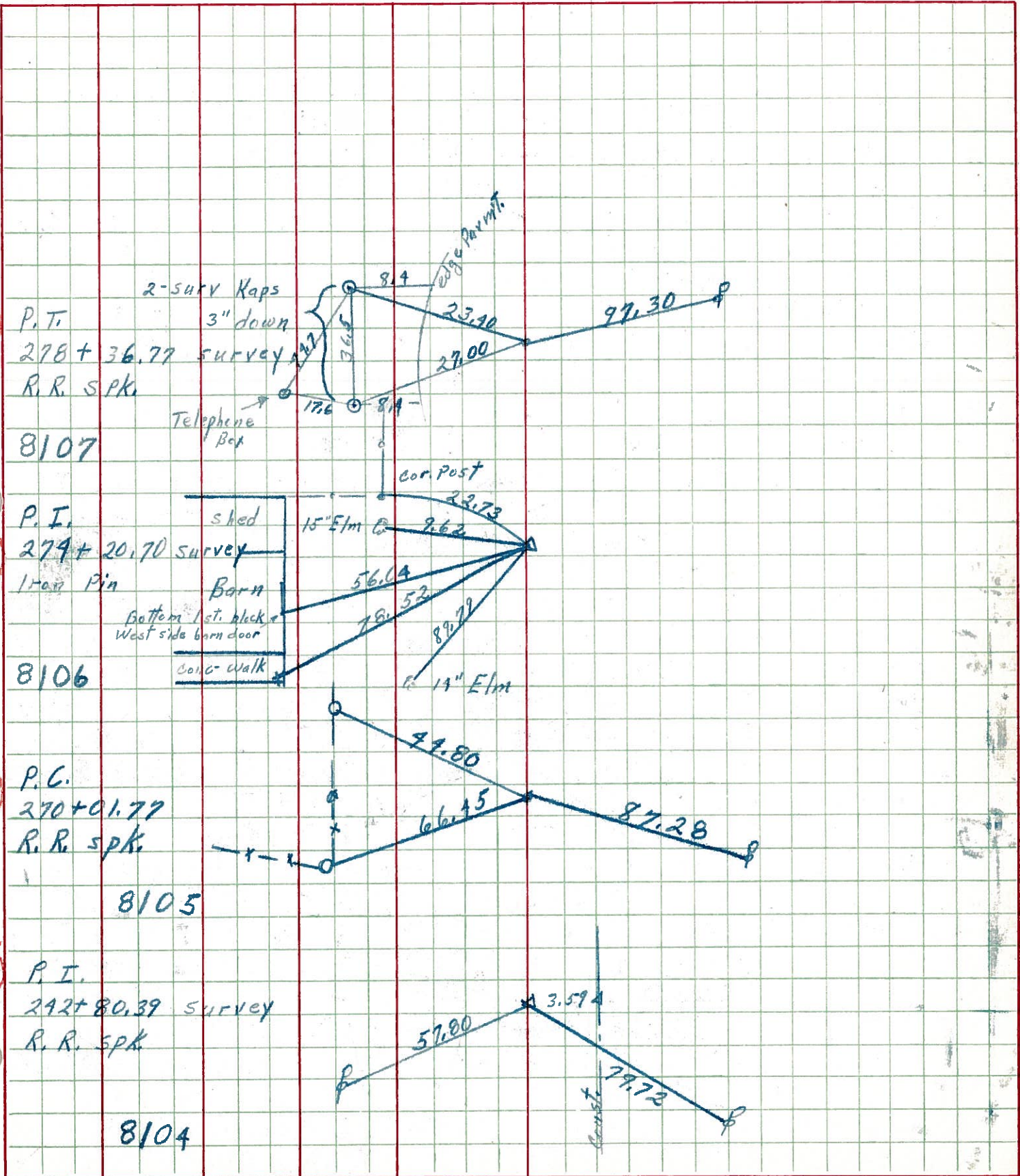
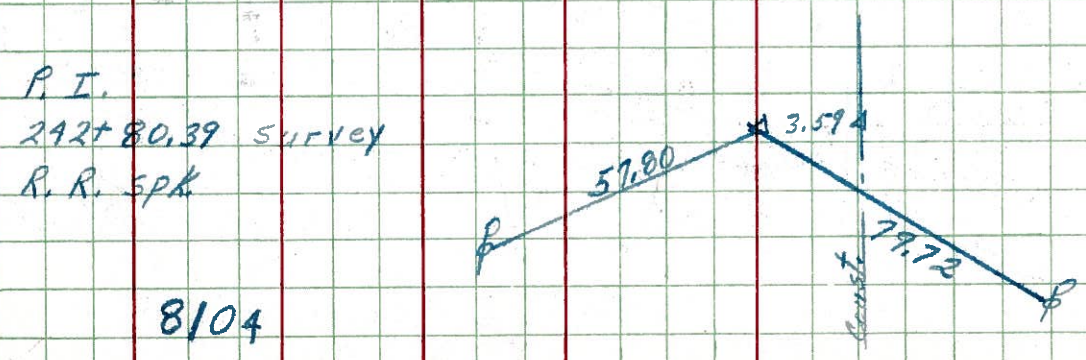
17



16

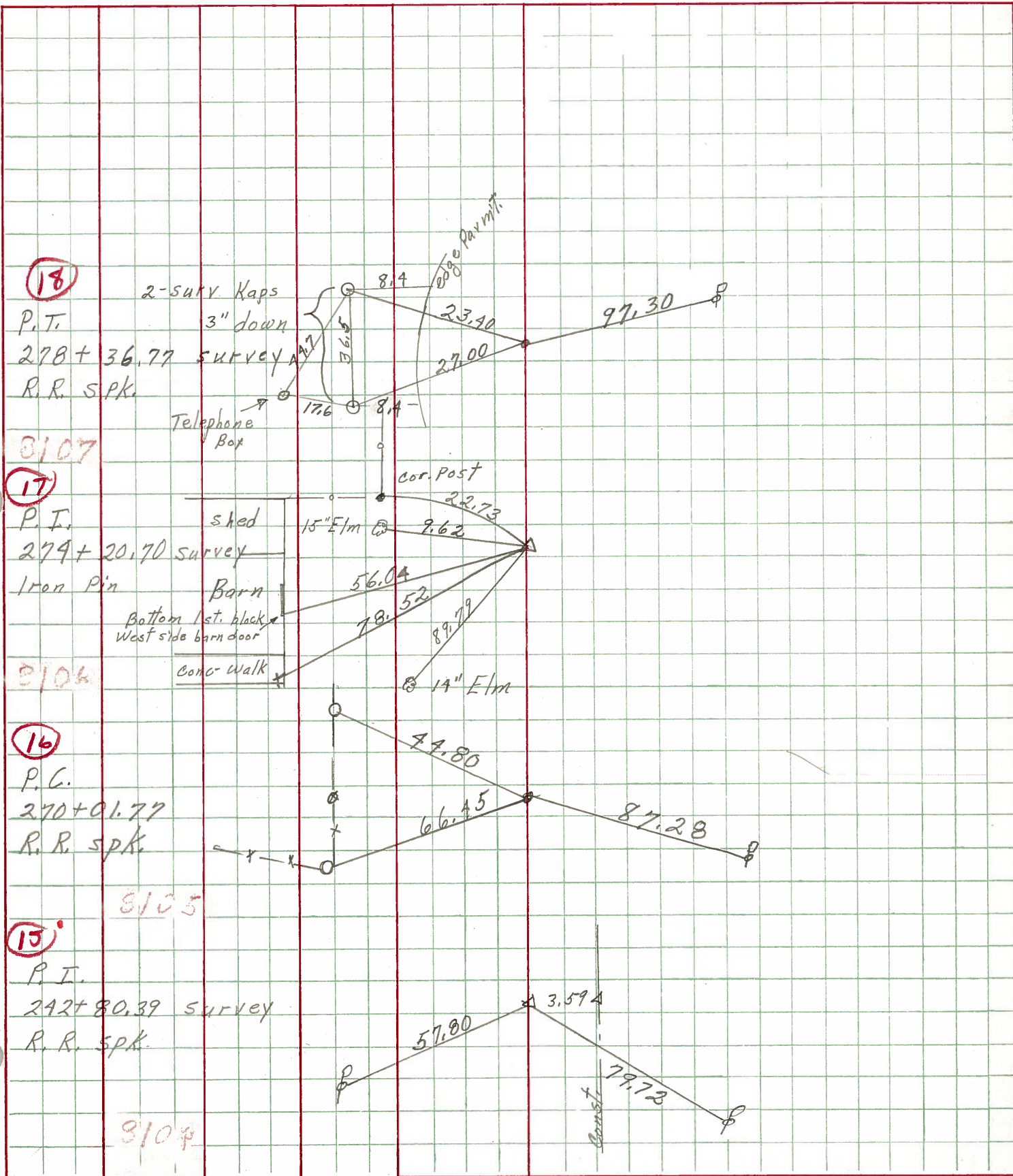


15



PERSONNEL	TITLE	PERSONNEL	TITLE	COUNTY	DATE
Schneider		Potts		Seneca	10-17-68
Mosser				S. R. 18	WEATHER Cloudy
Barbour				SEC. Festeria to Bascom	TEMP. 60°
Redding					

DESCRIPTION Ties for Control Points JOB NO. _____



PERSONNEL TITLE PERSONNEL TITLE

COUNTY Seneca

DATE Dec. 23, '58

ASH
Cromin
Leemaster

Lehr
John K.

S. R. #18 Fosteriz-Biscorn Rd WEATHER Clear

SEC. Sen.-18(1.79-8.60) TEMP. 40°

DESCRIPTION Control Point Ties - Survey + Const. JOB NO.

LEFT CENTER LINE RIGHT

