

O.D.O.T. DISTRICT 2 SURVEY OFFICE (USE ONLY)

PERSONNEL

REFERENCE NO. 16

SHEET 13 OF 48

NOTES AUBLE DATE 9/1/21
 H.C. NIESE WEATHER WINDY
 R.C. AUBLE TEMP. 76°

ROUTE SR 18
 COUNTY SENECA
 TOWNSHIP LOUDON
 SECTION 14

DWG BY RHOADES PID PVTRAIN

T 2 N R 13 E

TYPE MONUMENT P.K.SHANK

ON SURFACE - ~~BELOW~~ ON

OFFSET \odot PAVEMENT 5.3' LT : ~~RT~~

6.5' TO LT EDGE PAVEMENT

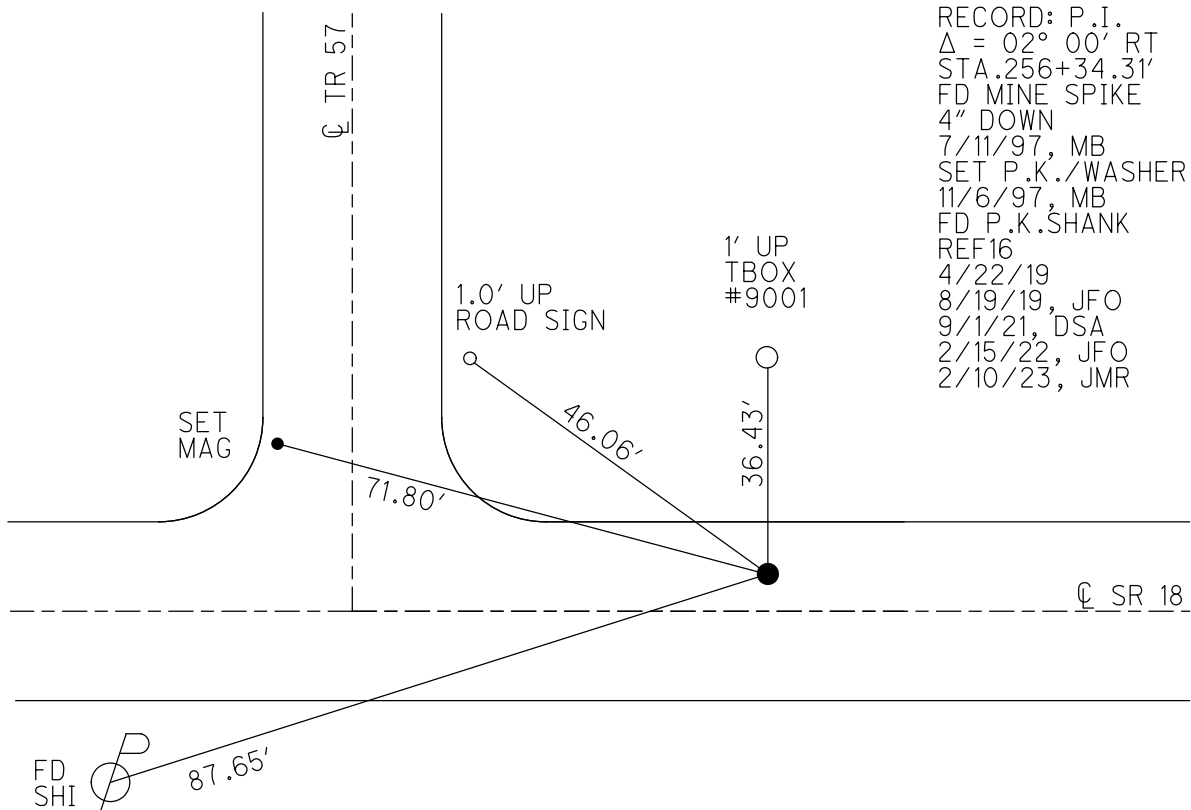
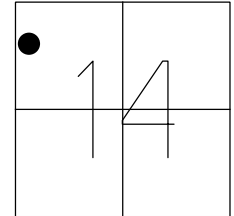
STATION: 256+34.31

HORZ.DATUM: NAD83(2011)

GEOID: 2012A

GRID: NORTHING: 535899.782

EASTING: 1736141.440

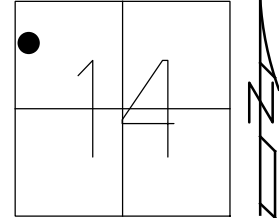


RECORD: P.I.
 $\Delta = 02^\circ 00' RT$
 STA. 256+34.31'
 FD MINE SPIKE
 4" DOWN
 7/11/97, MB
 SET P.K./WASHER
 11/6/97, MB
 FD P.K. SHANK
 REF16
 4/22/19
 8/19/19, JFO
 9/1/21, DSA
 2/15/22, JFO
 2/10/23, JMR

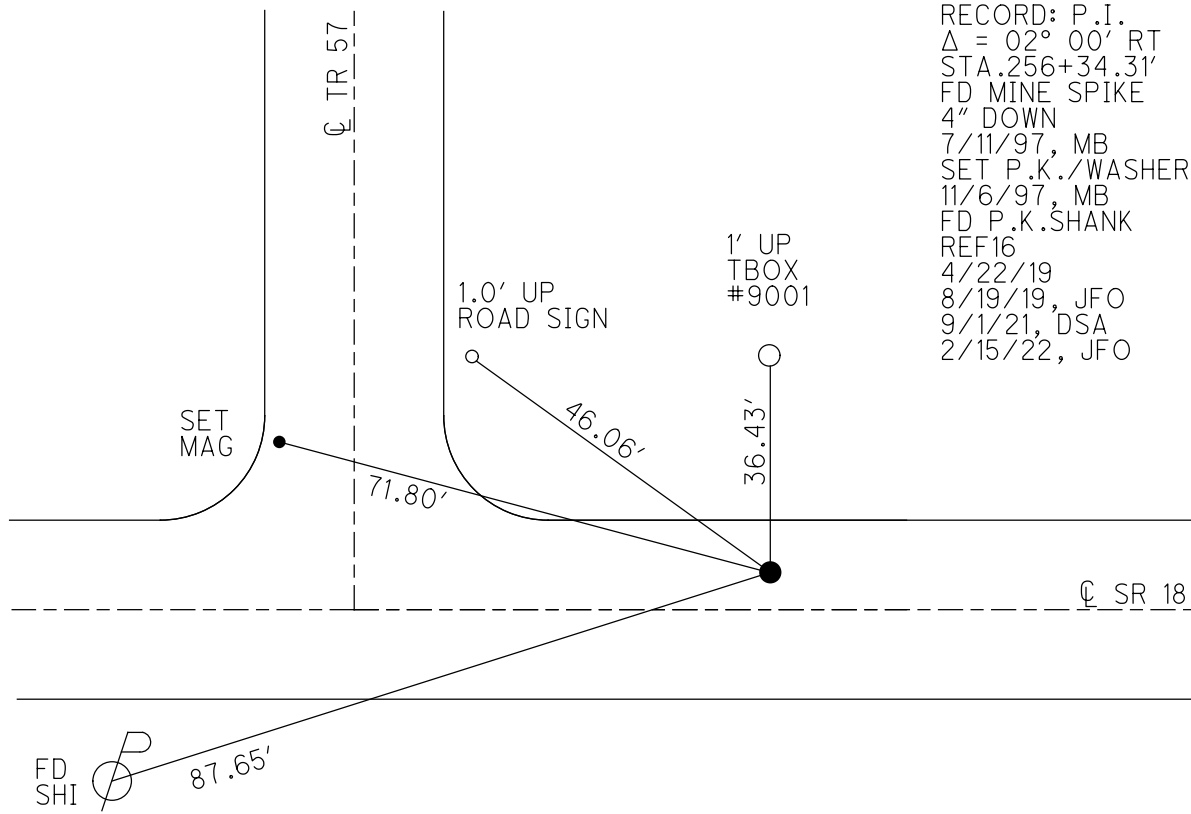
O.D.O.T. DISTRICT 2 SURVEY OFFICE (USE ONLY)

PERSONNEL _____ REFERENCE NO. 16 SHEET 13 OF 48
 NOTES AUBLE DATE 9/1/21 ROUTE SR 18
 H.C. NIESE WEATHER WINDY COUNTY SENECA
 R.C. AUBLE TEMP. 76° TOWNSHIP LOUDON
 DWG BY RHOADES PID PVTRAIN SECTION 14
 T 2 N R 13 E

TYPE MONUMENT P.K.SHANK
 ON SURFACE - ~~BELOW~~ ON
 OFFSET \bar{C} PAVEMENT 5.3' LT : ~~RT~~
6.5' TO LT EDGE PAVEMENT
 STATION: 256+34.31



HORZ.DATUM: NAD83(2011) GEOID: 2012A
 GRID: NORTHING: 535899.782 EASTING: 1736141.440



RECORD: P.I.
 $\Delta = 02^\circ 00' RT$
 STA. 256+34.31'
 FD MINE SPIKE
 4" DOWN
 7/11/97, MB
 SET P.K./WASHER
 11/6/97, MB
 FD P.K.SHANK
 REF16
 4/22/19
 8/19/19, JFO
 9/1/21, DSA
 2/15/22, JFO

O.D.O.T. DISTRICT 2 SURVEY OFFICE (USE ONLY)

PERSONNEL _____ REFERENCE NO. 16 SHEET 13 OF 48
 NOTES BARNHEISEL DATE 7/11/97 ROUTE SR 18
 H.C. CANTERBURY WEATHER SUNNY COUNTY SENECA
 R.C. ROUSOS TEMP. 75° TOWNSHIP LOUDON
 WEAVER SECTION 14
 DWG BY NIESE PID NO PID T 2 N R 13 E

TYPE MONUMENT MINE SPIKE

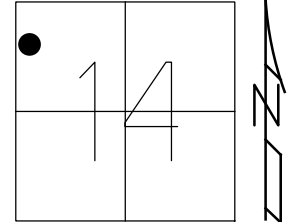
~~ON SURFACE~~ - BELOW 4"

OFFSET CL PAVEMENT 5.3' LT : ~~RT~~
6.5' TO LT EDGE PAVEMENT

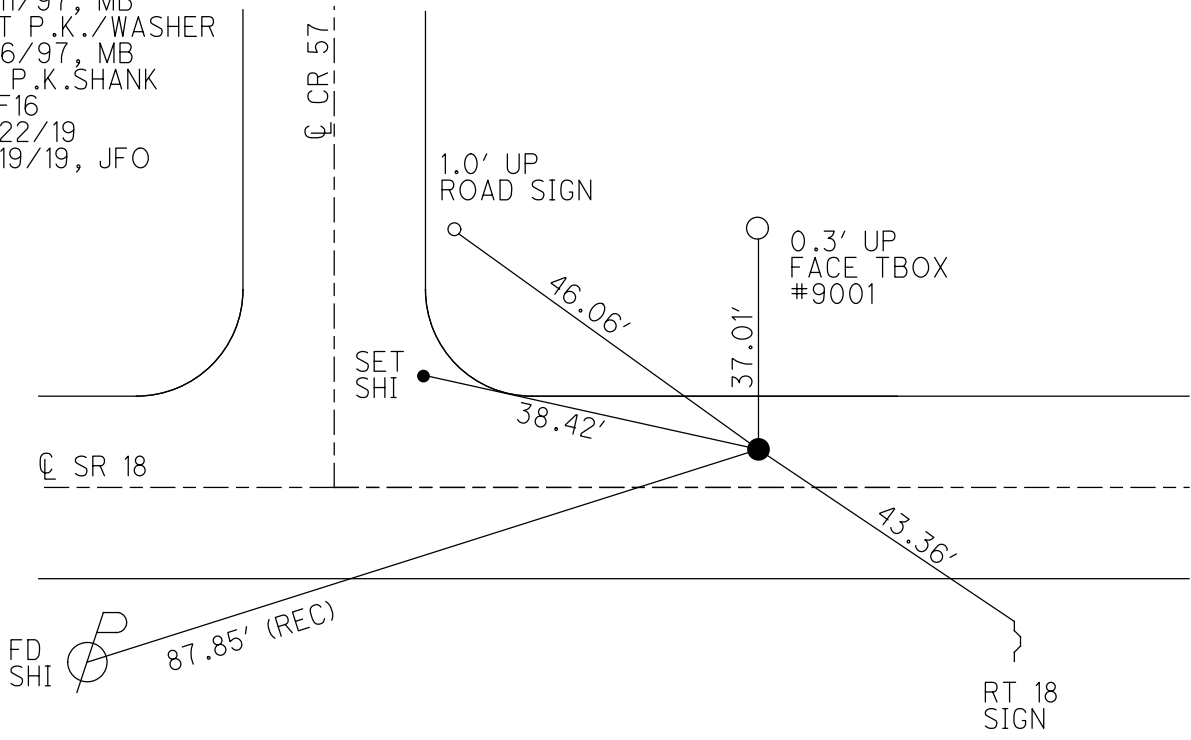
STATION: 256+34.31

HORZ. DATUM: NAD83(2011) GEOID: 2012A

GRID: NORTHING: 535899.782 EASTING: 1736141.440



RECORD: P.I.
 $\Delta = 02^\circ 00' RT$
 STA. 256+34.31'
 FD MINE SPIKE
 4" DOWN
 7/11/97, MB
 SET P.K./WASHER
 11/6/97, MB
 FD P.K. SHANK
 REF 16
 4/22/19
 8/19/19, JFO



O.D.O.T. DISTRICT 2 SURVEY OFFICE

PERSONNEL

REFERENCE NO. 16

SHEET 18 OF 22

NOTES Barnhart

H.C. CANTERBURY

DATE 7-11-97

ROUTE # 18

R.C. Rousos

WEATHER SUNNY

COUNTY SENECA

WEAVER

TEMP. +75°

TOWNSHIP London

Drawn BY Rousos

SECTION 14

T 2 N R 13 E

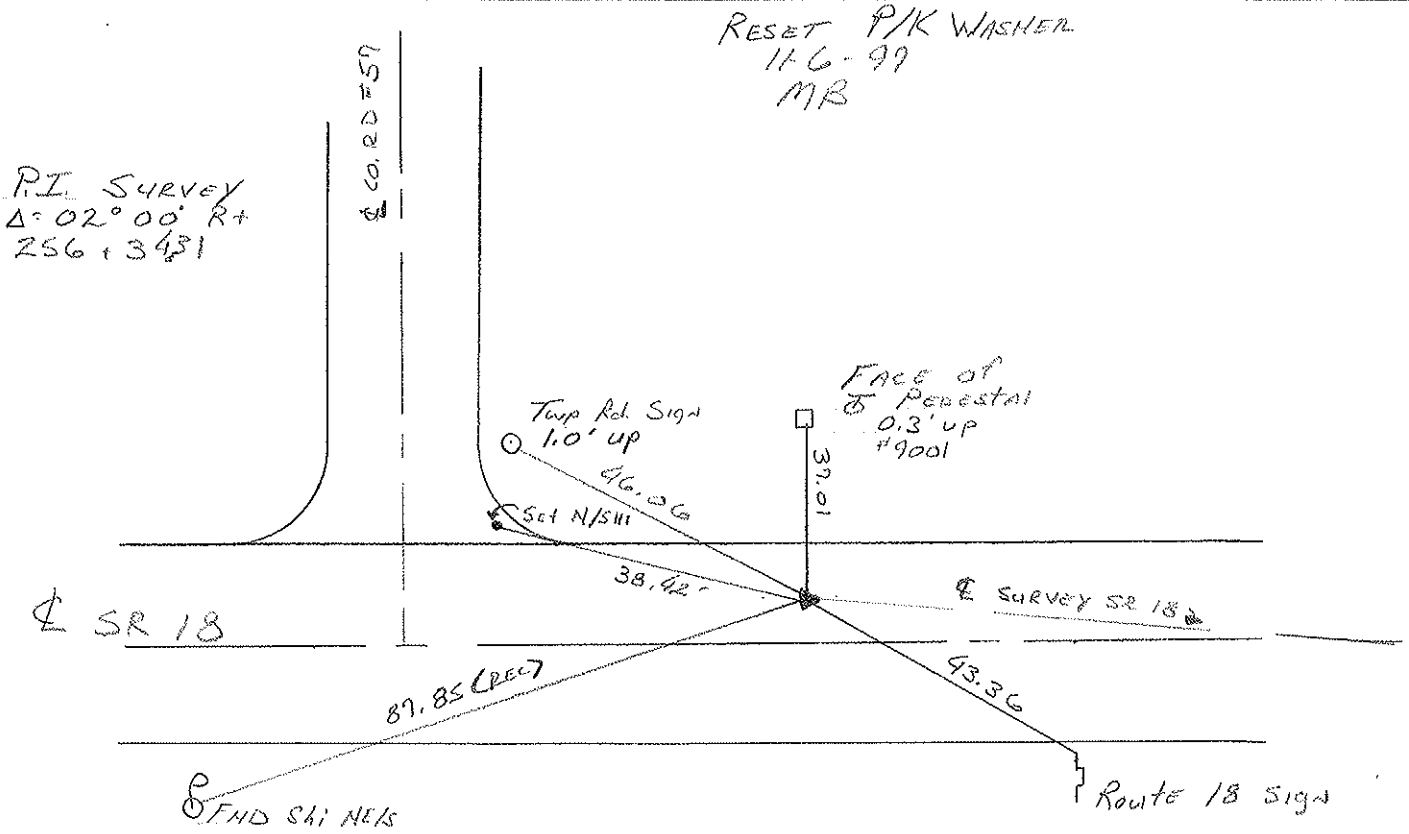
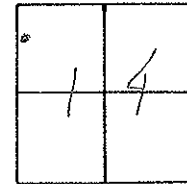
TYPE MONUMENT MINE SPIKE

ON SURFACE - BELOW 4"

LEFT - CL PAV'T. - RIGHT S.3 L+

6.5 TO LT EDGE PAVEMENT

S.L.M. 8+192.1



O.D.O.T. DISTRICT 2 SURVEY OFFICE

PERSONNEL

NOTES CRONIN
 H.C. RIPPLE
 R.C. BARBOUR
Geyman

REFERENCE NO. 19

DRAWN 1/19/90

DATE 1/22/90

WEATHER OVERCAST

TEMP. 37°

SHEET 18 OF

ROUTE # 18

COUNTY SENECA

TOWNSHIP LOODAN

SECTION 14

T 2 N R 13 E

TYPE MONUMENT MINE SPIKE

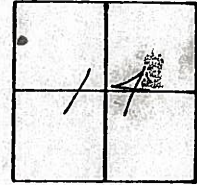
ON SURFACE - BELOW 3"±

LEFT - CL PAV'T. - RIGHT 5'±

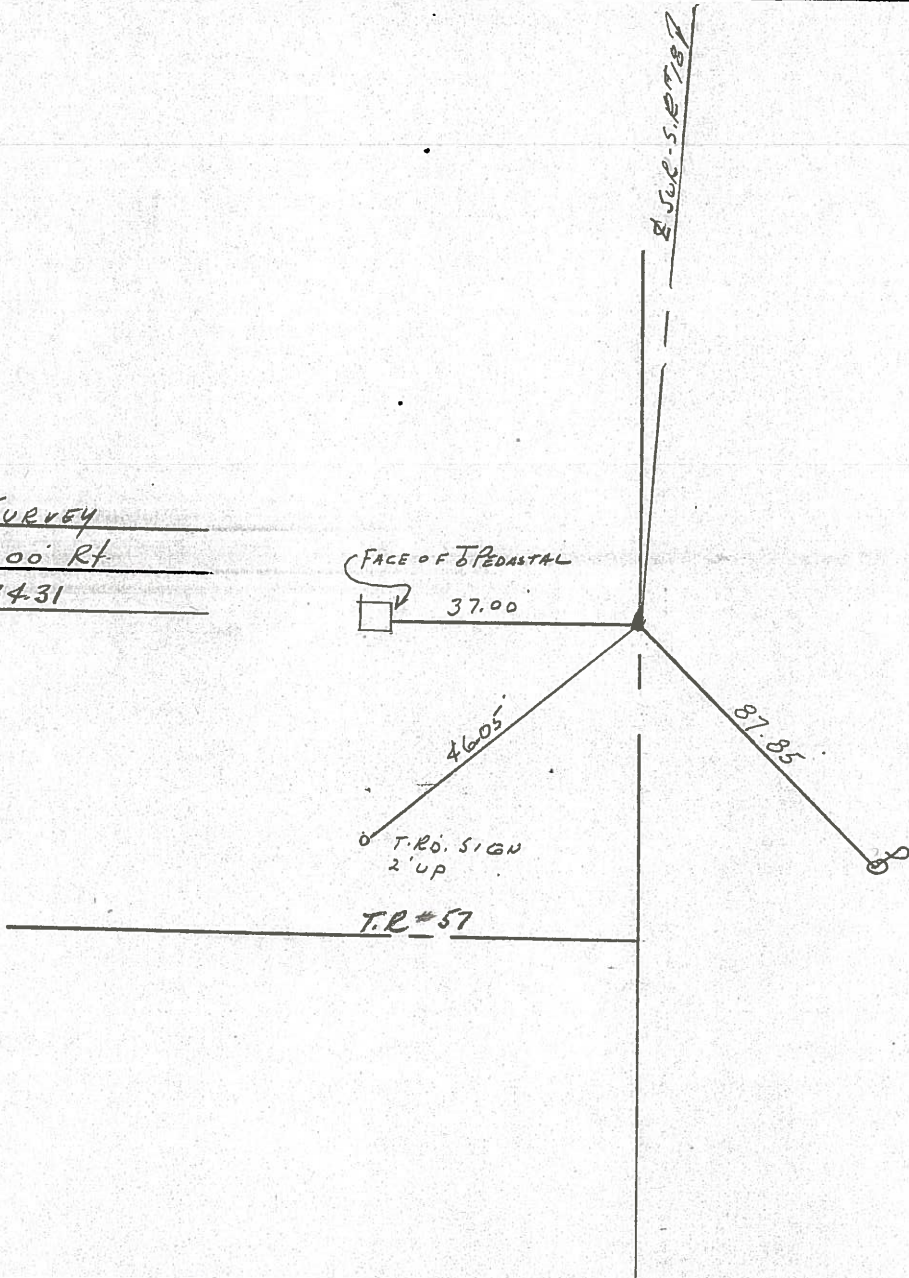
TO EDGE PAVEMENT

S.L.M.

16

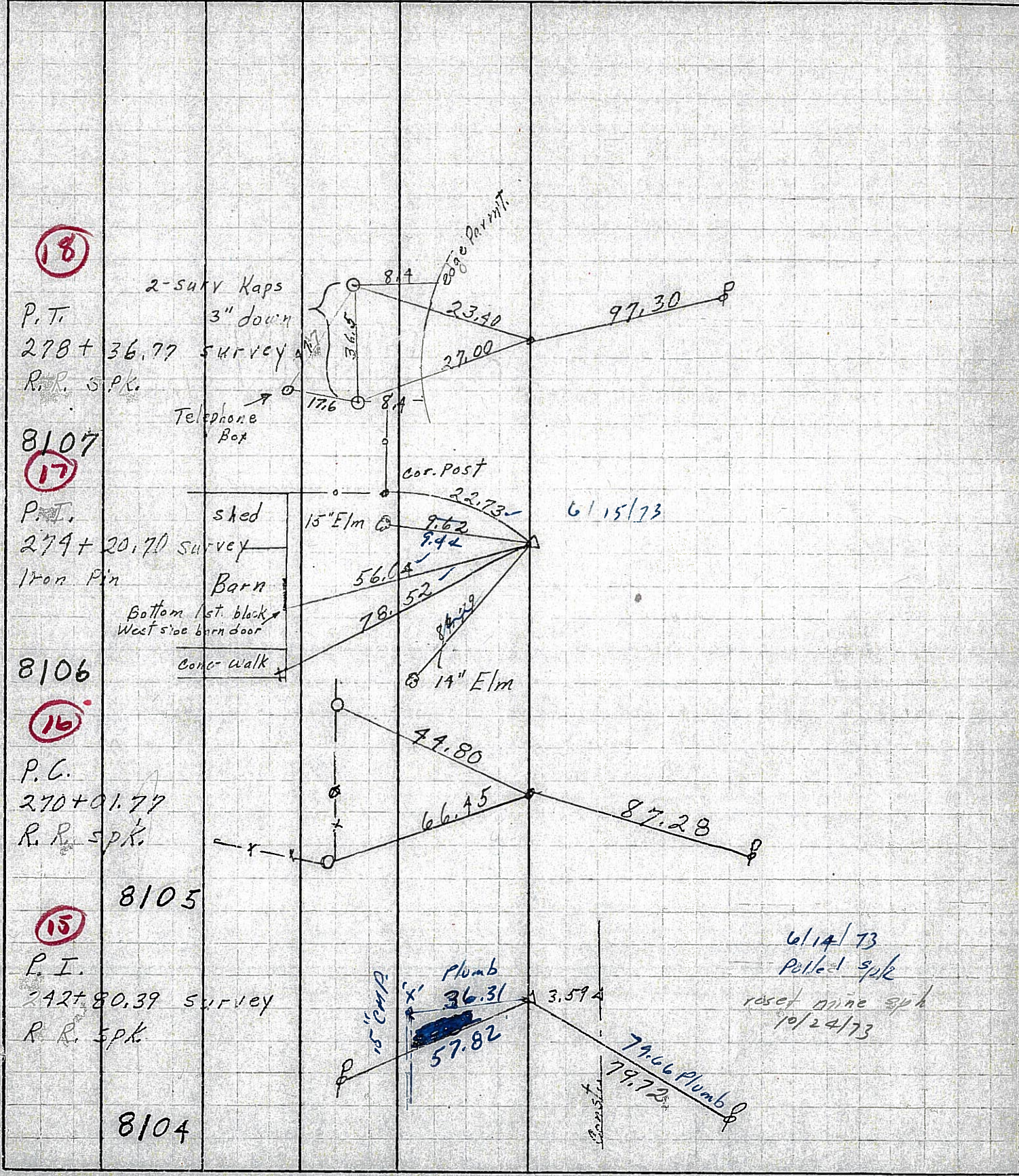


P.F. SURVEY
A = 02° 00' Rt
256 + 34.31



PERSONNEL	TITLE	PERSONNEL	TITLE	COUNTY	DATE	WEATHER	TEMP.
Schneider		Potts		Seneca	10-17-68	Cloudy	60°
Mosser				S. R. 18			
Barbour				SEC. Fosteria to Bascom			
Redding							

DESCRIPTION Ties for Control Points JOB NO. _____



18

P.T.
278 + 36.77 survey
R.R. S.P.K.

8107

17

P.T.
279 + 20.70 survey
Iron Pin
Barn
Bottom 1st. block
West side barn door
Concr. walk

8106

16

P.C.
270 + 01.77
R.R. S.P.K.

8105

15

P.T.
242 + 80.39 survey
R.R. S.P.K.

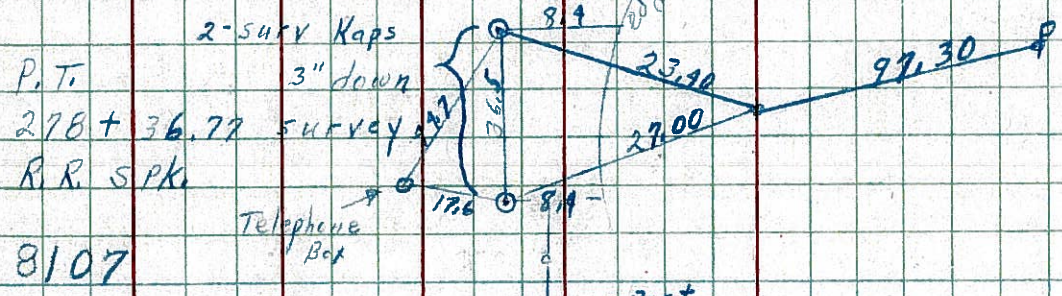
8104

6/14/73
Pulled spike
reset mine spike
10/24/73

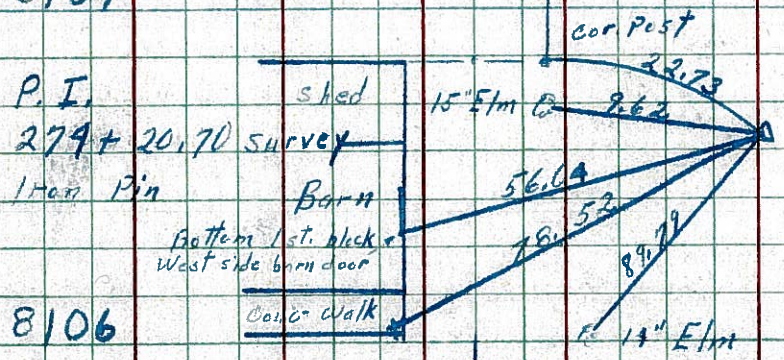
PERSONNEL	TITLE	PERSONNEL	TITLE	COUNTY	DATE
Schneider		Potts		Seneca	10-17-68
Mosser				S. R. 18	WEATHER cloudy
Barbour				SEC. Fostoria to Bascom	TEMP. 60°
Redding					

DESCRIPTION Ties for Control Points JOB NO. _____

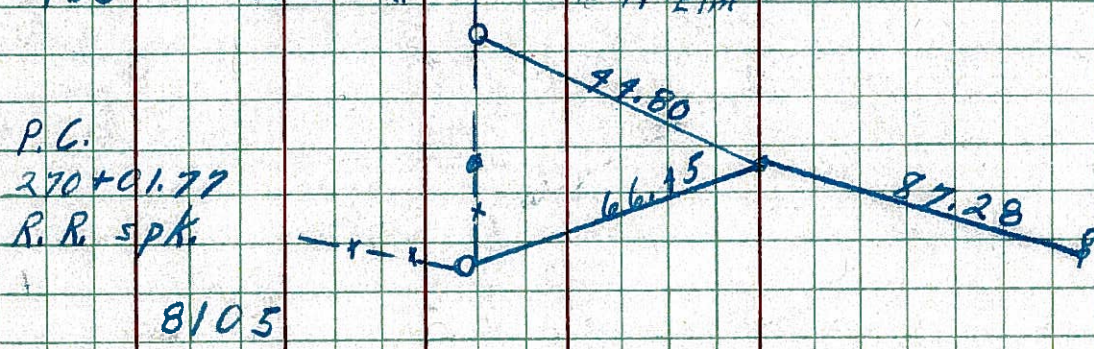
18



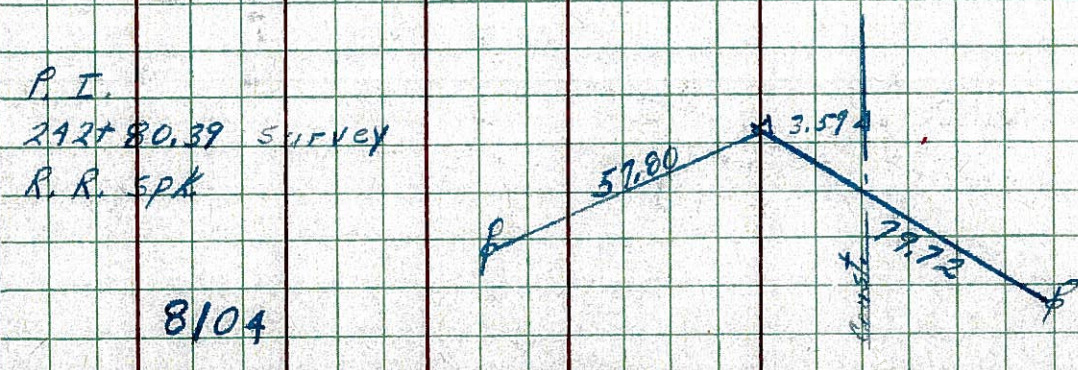
17



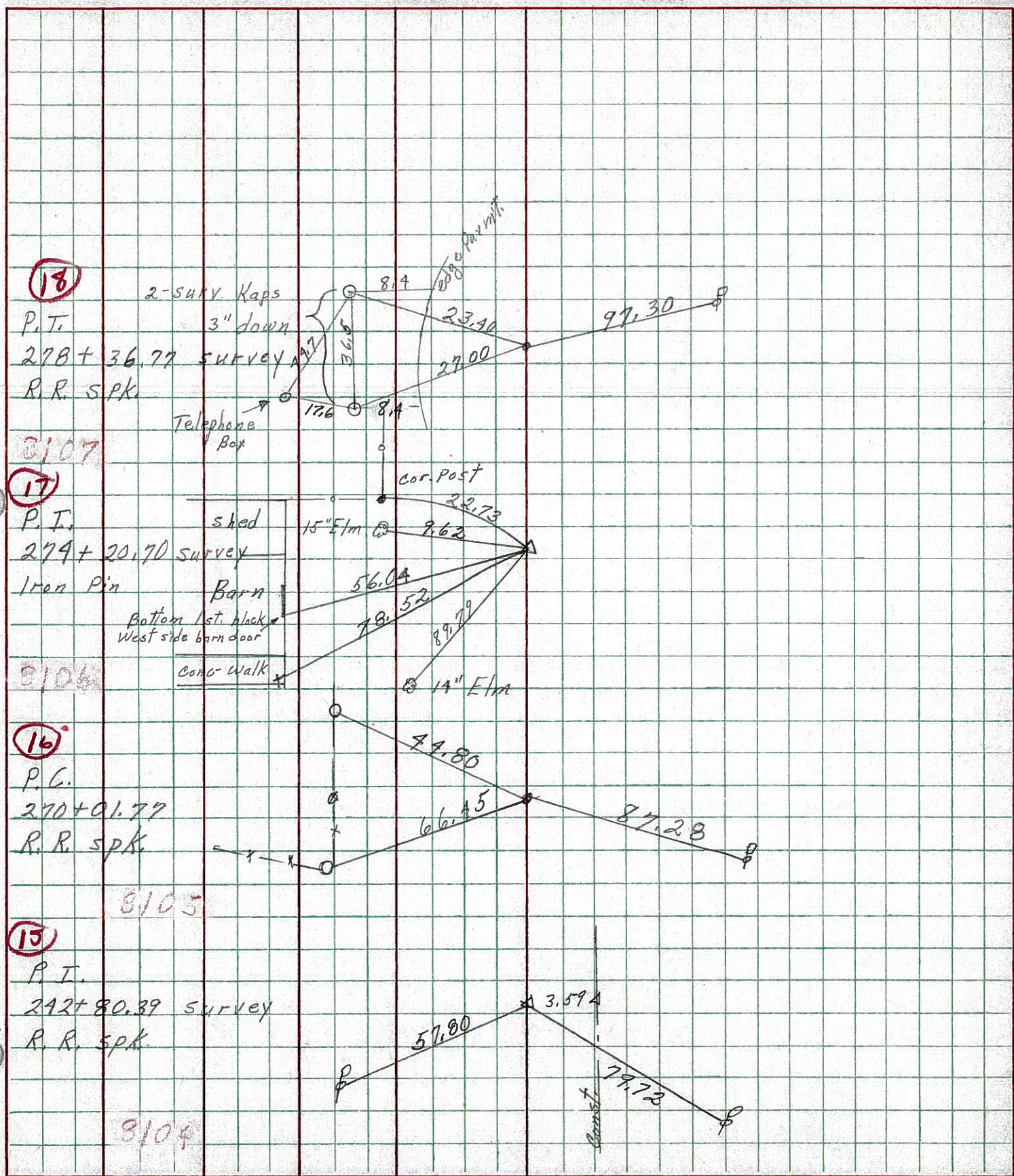
16



15



PERSONNEL	TITLE	PERSONNEL	TITLE	COUNTY	DATE
Schneider		Potts		Seneca	10-17-68
Mosser				S. R.	18
Barbour				WEATHER	cloudy
Redding				SEC.	Fosteria to Bascom
DESCRIPTION	Ties for Control Points			TEMP.	60°
	LEFT	CENTER LINE	RIGHT	JOB NO.	



18

3107

17

3106

16

3105

15

3104

PERSONNEL TITLE PERSONNEL TITLE

COUNTY Seneca DATE Dec. 29, '58

Hsh
Cromin
Leemaster

S. R. #18 Fosteriz - Bascom Rd WEATHER Clear

Lahr
John K.

SEC. Sen-18 (1.79-8.60) TEMP. 40°

DESCRIPTION Control Point Ties - & Survey & Const. JOB NO. _____

LEFT CENTER LINE SURVEY RIGHT

(16)

✓ 9-1-59 R.R. Spk.

P.C. 270+01.77 Survey
P.K. Nail & Shi.

R.R. Spk on top 11/1/65

Survey Tang.

6" Steel Casings
Filled + set in Conc. Fence End Post
"X" Cut 1.5' Above Ground.

Const.

Const. Curve

✓ 9-1-59 R.R. Spk.

P.C. 269+47.50 Const. (Plan)

P.C. 269+48.10 Const.

P.K. Nail & Shi.

✓ 9-1-59 R.R. Spk.

P.T. 258+34.23 Survey
P.K. Nail & Shi.

✓ 9-1-59 R.R. Spk.

P.O.T.

(Sta. Egt) Const. Tang

258+34.11 Const. Bk Plan

258+33.84 Const. Bk

258+34.23 Survey Const. H

Nail & Shi.

✓ 9-1-59 R.R. Spk.

Survey Curve

P.T. 258+28.44 Const.

P.K. Nail & Shi.

28.44
0.40
33.84

Found R.R. Spk on top -
Retired by Opening Crew 11/1/65

✓ 9-1-59 R.R. Spk.

P.I. 256+34.31 Survey
I.P.

Const. Curve

Survey Curve

5' up

6/15/73
Potted Spk
Csholtz Rd.
reset rmc spk
10/29/73

✓ 9-1-59 R.R. Spk.

P.I. 256+28.52 Const.

P.R. Spk.

Const.