

O.D.O.T. DISTRICT 2 SURVEY OFFICE (USE ONLY)

PERSONNEL

REFERENCE NO. 20

SHEET 19 OF 48

NOTES CORDES DATE 6/28/01
 H.C. HOMAN WEATHER SUNNY
 R.C. VAN DUSEN TEMP. 90°
CANTERBURY

ROUTE SR 18
 COUNTY SENECA
 TOWNSHIP LOUDON
 SECTION 13
 T 2 N R 13 E

DWG BY NIESE PID NO PID

TYPE MONUMENT P.K./WASHER

ON SURFACE - ~~BELOW~~ ON

OFFSET \odot PAVEMENT 4.0' LT : ~~RT~~

8.0' TO LT EDGE PAVEMENT

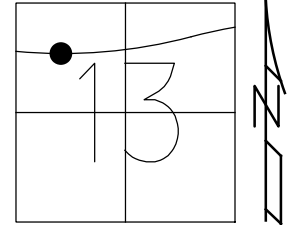
STATION: 340+23

HORZ.DATUM: NAD83(2011)

GEOID: 2012A

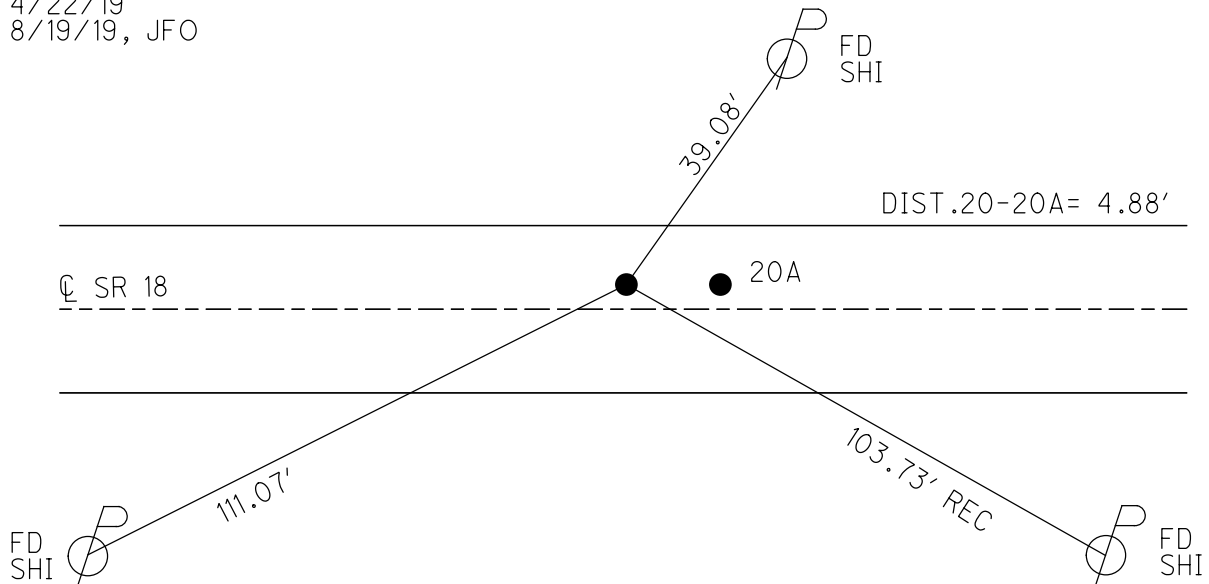
GRID: NORTHING: 535098.191

EASTING: 1743113.562



RECORD: P.I.
 RR SPIKE
 P.K./SHI
 R.R.SPIKE
 FD P.K./WASHER
 6/28/01, JFO
 SET P.K./WASHER
 7/31/01, SAH
 FD P.K./WASHER
 REF20
 4/22/19
 8/19/19, JFO

REF 20A
 FD MAG NAIL
 REFA20
 4/22/19, JFO
 NORTHING: 535098.138
 EASTING: 1743118.440



O.D.O.T. DISTRICT 2 SURVEY OFFICE

PERSONNEL

REFERENCE NO. 20

SHEET 1 OF 26

NOTES B. CORDES

H.C. D. HOMAN

DATE 6-28-01

ROUTE 18

R.C. B. VAN DUSEN

WEATHER SUNNY

COUNTY SENECA

M. CANTERBURY

TEMP. +90°F

TOWNSHIP LODON

SECTION 13

T2 NR 13 E

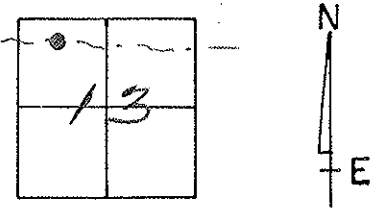
TYPE MONUMENT PK/WASHER

ON SURFACE - BELOW YES

LEFT- & PAV'T. - RIGHT 4'

8.0' TO LT. EDGE PAVEMENT

S.L.M. 340+23



Rec:

P.I. - PREVIOUS MONUMENTS

R.R. SPK.

PK/SHI.

R.R. SPK.

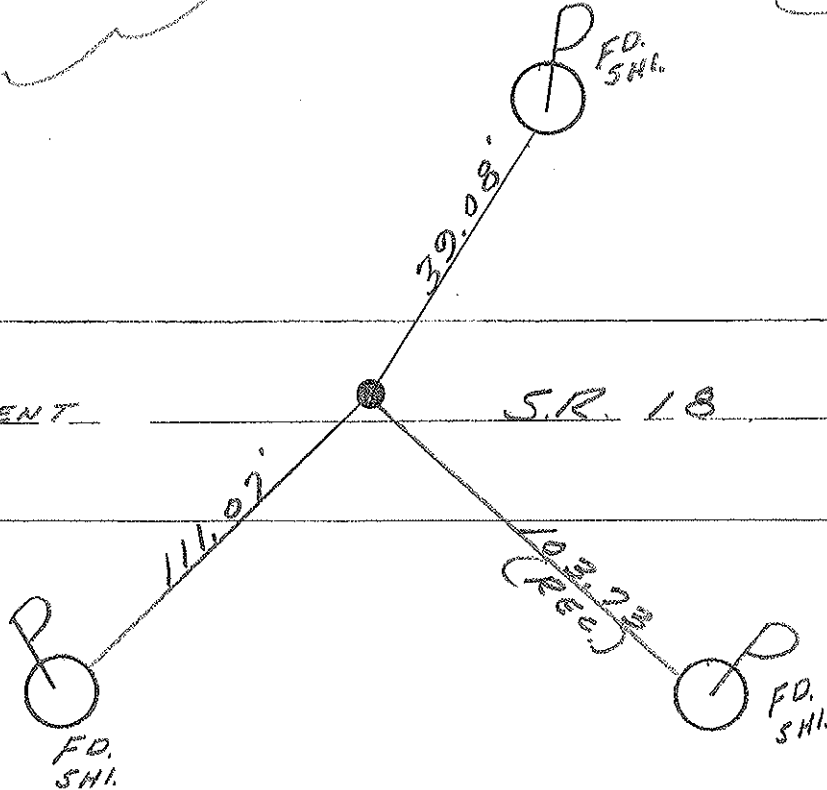
SET PK/WASHER

7-31-01

S.A.H.

& PAVEMENT

SR. 18



O.D.O.T. DISTRICT 2 SURVEY OFFICE

PERSONNEL _____

REFERENCE NO. 20

SHEET 1 OF 27

NOTES CHENEY

H.C. BARBOUR

R.C. RIPPLE

DATE 10-9-1991

WEATHER SUNNY

TEMP. 70°

ROUTE 18

COUNTY SENECA

TOWNSHIP LOUDON

SECTION 13

T2N R13E

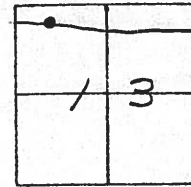
TYPE MONUMENT SET PK/WASHER

ON SURFACE - ~~BELOW~~ _____

LEFT- & PAV'T. - ~~RIGHT~~ 4'

15.5 TO S. EDGE PAVEMENT

S.L.M. 340+10

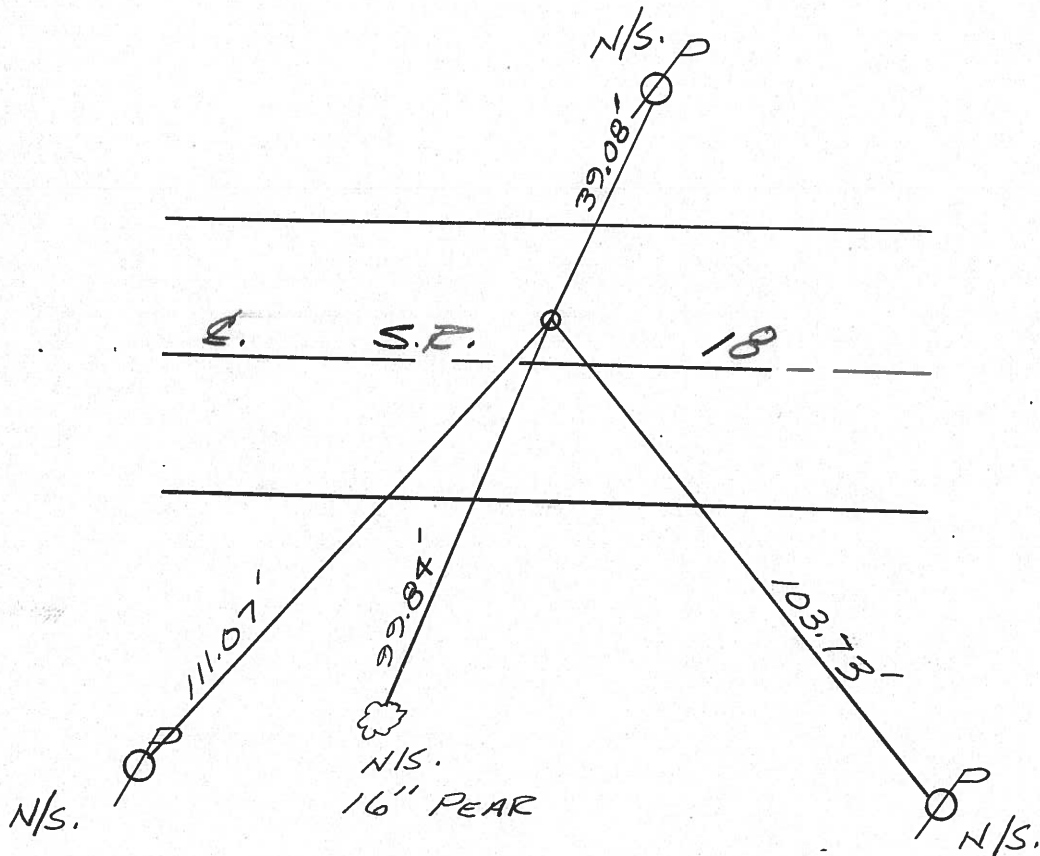


P.I. - PREVIOUS MONUMENTS:

R.R. SPK.

PK/SH1.

R.R. SPK.



QD.O.T. DISTRICT 2 SURVEY OFFICE

Sht. ___ of ___

County Seneca S.R. #18

Date 5-15-80 OK-9-10-80 C.W.S.

Township London

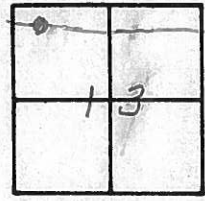
Weather Fair

Section 13

Temp. 58°

T2N, R13E

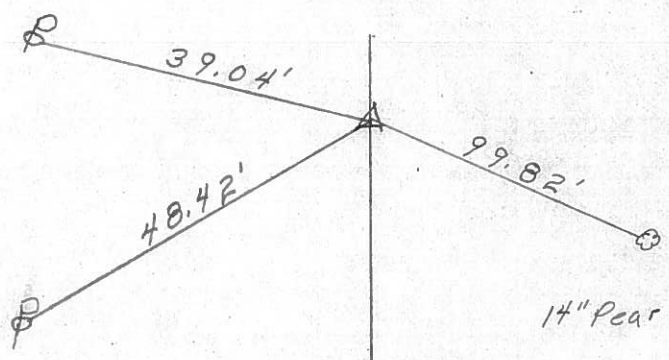
Personnel Schneider
Mosser
Barbour
Cronin
Ripple Geyman



20



4-5.R. #18

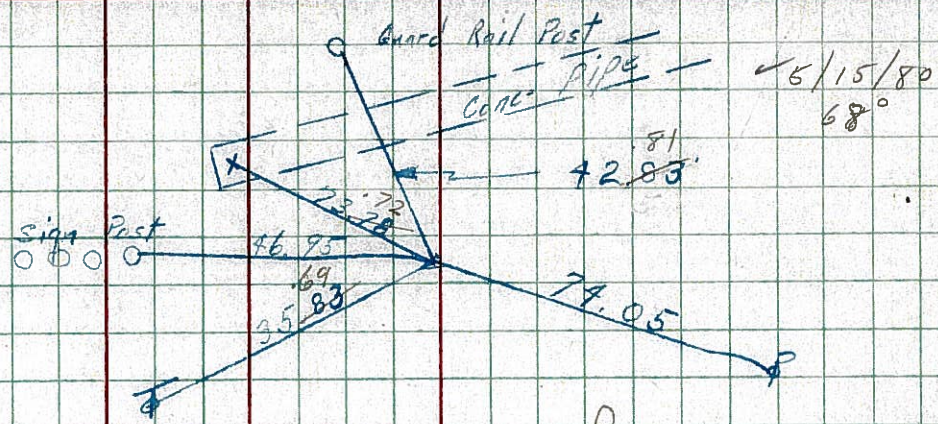


P.I.
327+63.25 SURVEY
R.R. SPK.
SET P.K. & SHI.

PERSONNEL TITLE PERSONNEL TITLE COUNTY Seneca DATE 10-17-68
 schneider _____ Patts _____
 Mosser _____ S. R. 18 WEATHER cloudy
 Barbour _____
 Redding _____ SEC. Fosteria to Baseom TEMP. 70°
 DESCRIPTION Tie for Control Points LEFT CENTER LINE RIGHT JOB NO.

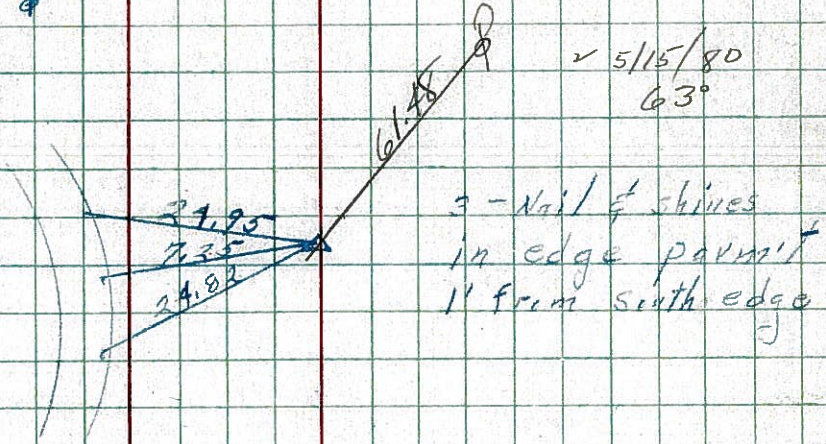
22

P.I.
 352+29.75
 Iron Pin
 8111



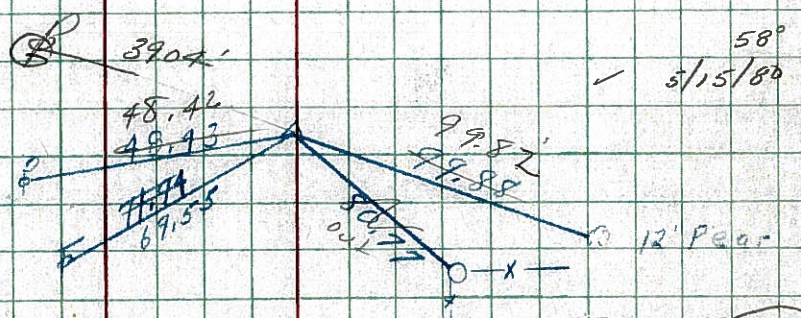
21

P.I.
 339+19.05
 Iron Pin
 8110



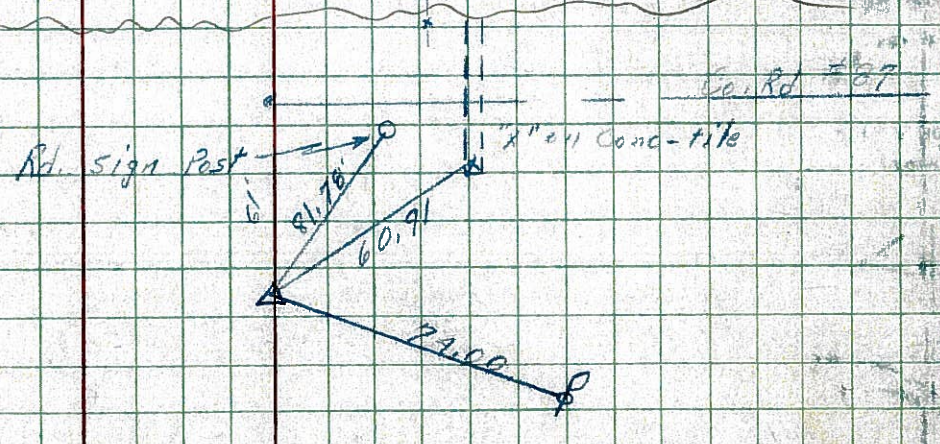
20

P.I.
 327+63.25 (survey)
 R.R. spk.
 8109



19

I. Pipe on Top
 P.I.
 282+31.67 (survey)
 FA spk. 7" down
 1 1/2' off edge Parm't.
 8108



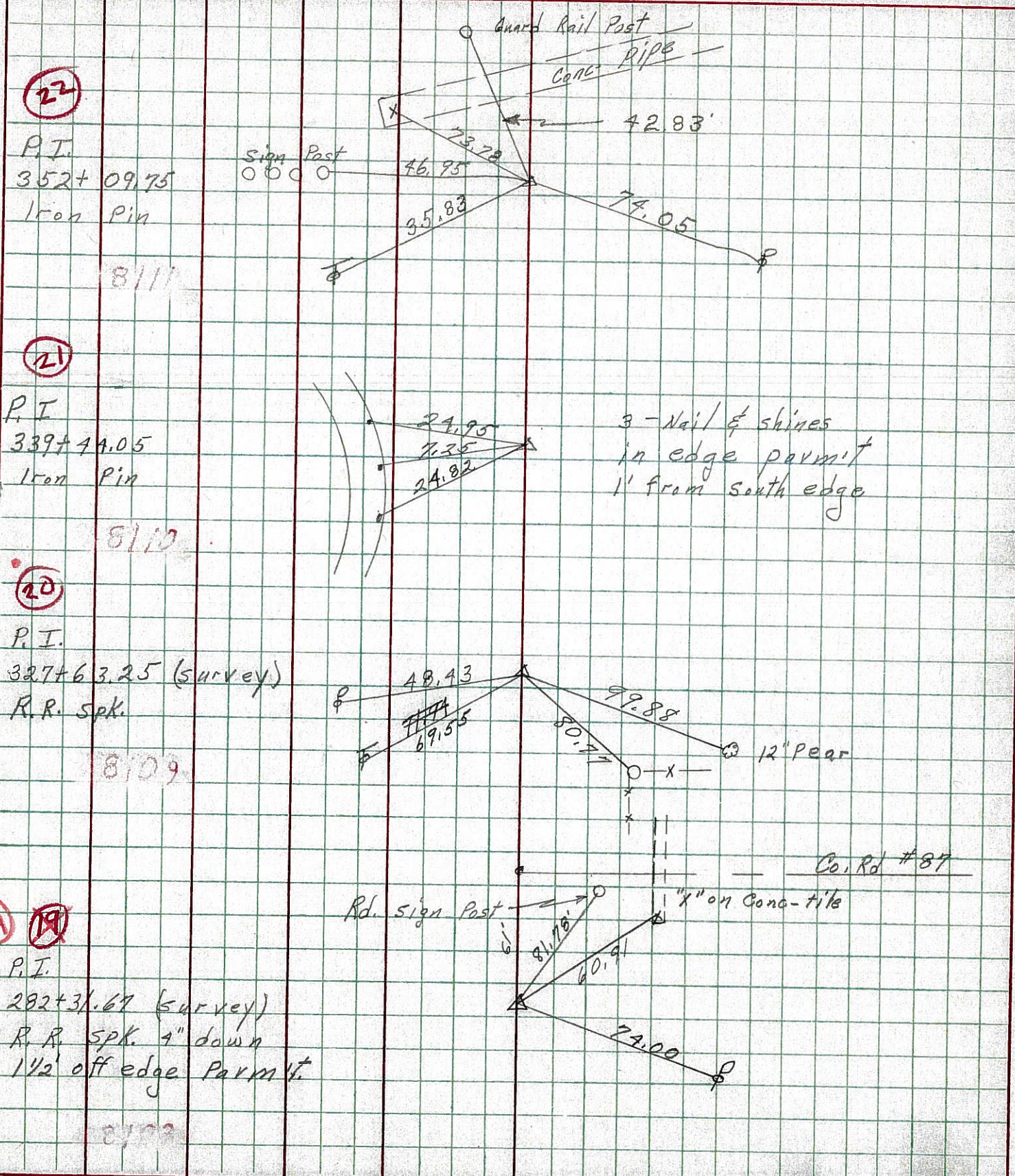
17-A

608 L W
 tried to hit flag man

PERSONNEL	TITLE	PERSONNEL	TITLE	COUNTY	DATE
Schneider		Potts		Seneca	10-17-68
Mosser				S. R. 18	WEATHER cloudy
Barbour				SEC. Fostoria to Baseom	TEMP 70°
Redding					

DESCRIPTION Tie for Control Points

LEFT CENTER LINE RIGHT JOB NO.



PERSONNEL TITLE PERSONNEL TITLE

Msh

COUNTY Seneca

DATE Jan. 6, '59

Cronin

S. R. #18 Fostoria - Bacon Rd. WEATHER Clear

Leemaster

L.Hr

SEC Sen 18 (1.79-8.60) TEMP 20°

John K.

DESCRIPTION

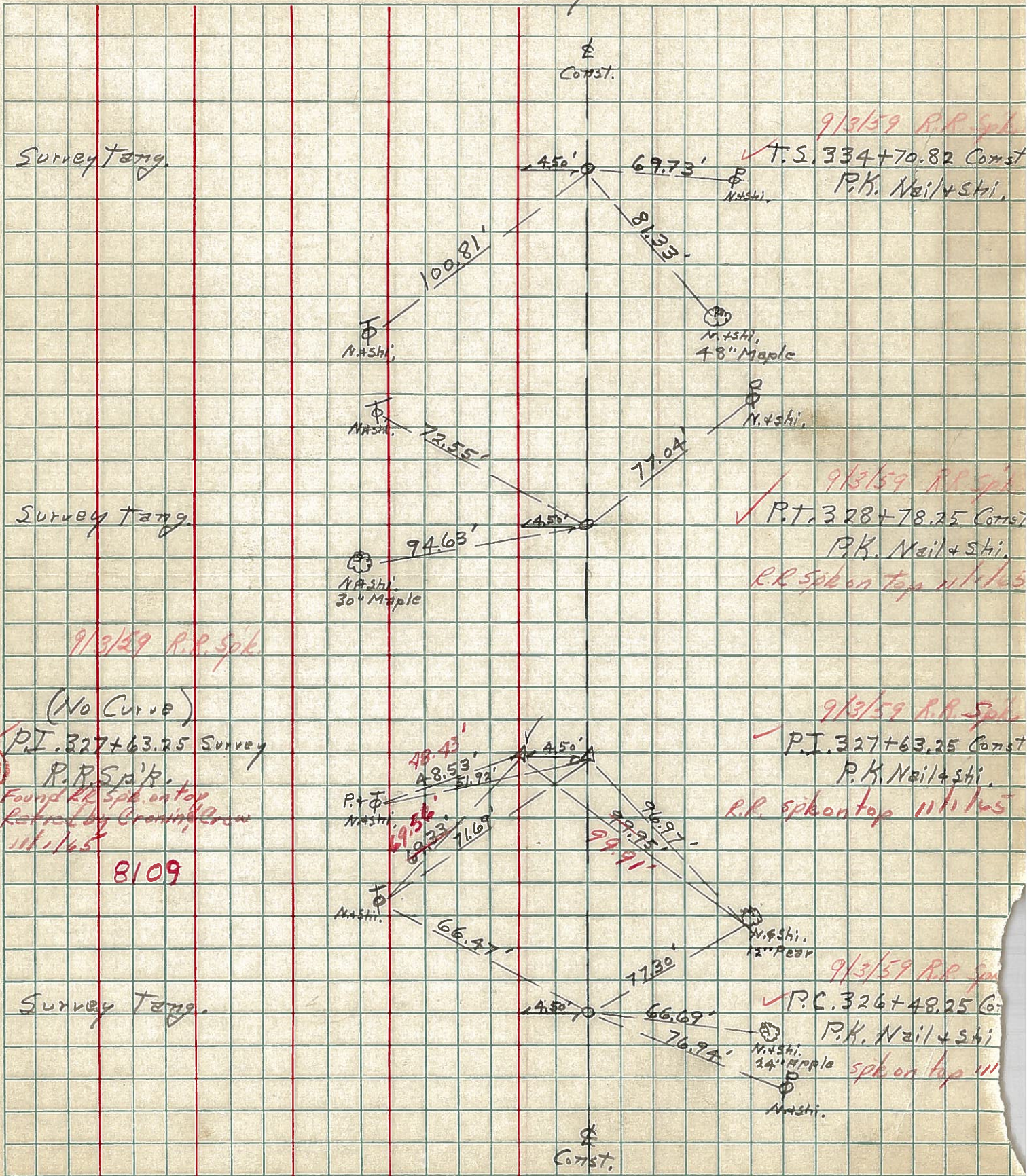
Control Point Ties - & Survey of Const.

JOB NO.

LEFT

CENTER LINE Survey

RIGHT



9/13/59 R.R. Spk

T.S. 334+70.82 Const
P.K. Nail + Shi.

9/13/59 R.R. Spk

P.T. 328+78.25 Const
P.K. Nail + Shi.

R.R. Spk on top 111/165

9/13/59 R.R. Spk

(No Curve)

P.I. 327+63.25 Survey

P.R. Spk

Found R.R. Spk on top
Retired by Cronin Crew
111/165

8109

9/13/59 R.R. Spk

P.I. 327+63.25 Const
P.K. Nail + Shi.

R.R. Spk on top 111/165

9/13/59 R.R. Spk

P.C. 326+48.25 Const
P.K. Nail + Shi.

Spk on top 111