

O.D.O.T. DISTRICT 2 SURVEY OFFICE (USE ONLY)

PERSONNEL

REFERENCE NO. 21

SHEET 20 OF 48

NOTES CORDES

DATE 6/28/01

ROUTE SR 18

H.C. HOMAN

WEATHER SUNNY

COUNTY SENECA

R.C. VAN DUSEN
CANTERBURY

TEMP. 90°

TOWNSHIP LOUDON

DWG BY NIESE PID NO PID

SECTION 13

T 2 N R 13 E

TYPE MONUMENT 1" IPIN

ON SURFACE - ~~BELOW~~ ON

OFFSET Q PAVEMENT 22.9' ~~LT~~ : RT

11.6' TO RT EDGE PAVEMENT

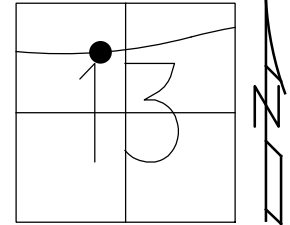
STATION: 351+88

HORZ.DATUM: NAD83(2011)

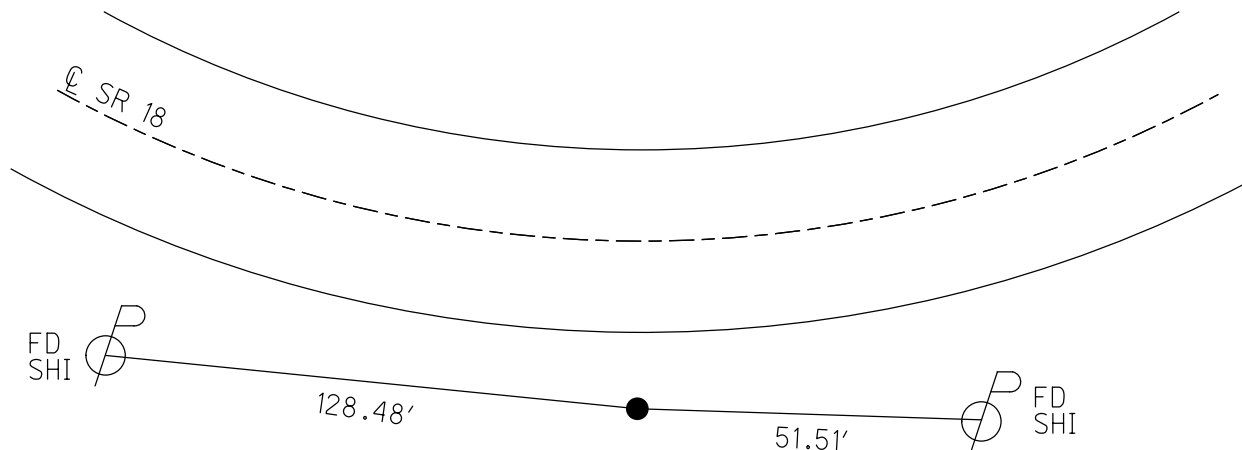
GEOID: 2012A

GRID: NORTHING: 535083.698

EASTING: 1744291.189



RECORD: P.I.
FD 1" IPIN
6/28/01, DCH
FD 1" IPIN
3" DOWN
REF21
4/22/19, JFO



O.D.O.T. DISTRICT 2 SURVEY OFFICE

PERSONNEL

REFERENCE NO. 21

SHEET 2 OF 26

NOTES B. GORDES

H.C. D. HOMAN

DATE 6-28-01

ROUTE 18

R.C. B. VAN DUSEN

WEATHER SUNNY

COUNTY SENECA

M. CANTERBURY

TEMP. +90°F

TOWNSHIP LOUDON

SECTION 13

T2 N R 13 E

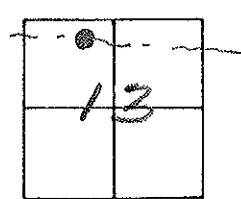
TYPE MONUMENT 1" IRON PIN

ON SURFACE - BELOW YES

LEFT - & PAV'T. - RIGHT 22.9

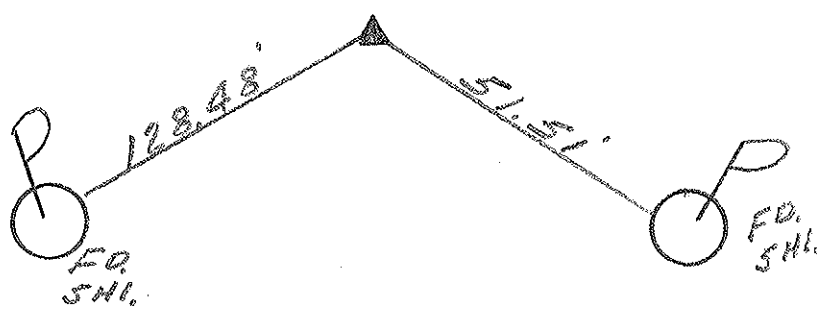
11.6 TO S. EDGE PAVEMENT

S.L.M. 351+88



P.I. REC:
FD. 1" IRON PIN

& PAVEMENT S.R. 18



O.D.O.T. DISTRICT 2 SURVEY OFFICE

PERSONNEL

REFERENCE NO. 21

SHEET 2 OF 27

NOTES CHENEY

H.C. RIPPLE

R.C. BARBOUR

DATE 10-9-1991

WEATHER SUNNY

TEMP. 70°

ROUTE 18

COUNTY SENECA

TOWNSHIP LOUDDON

SECTION 13

T2N R13E

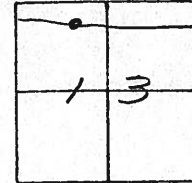
TYPE MONUMENT SET PK/WASHER

ON SURFACE - BELOW

LEFT - C PAV'T. - RIGHT 22.9'

11.6' TO S. EDGE PAVEMENT

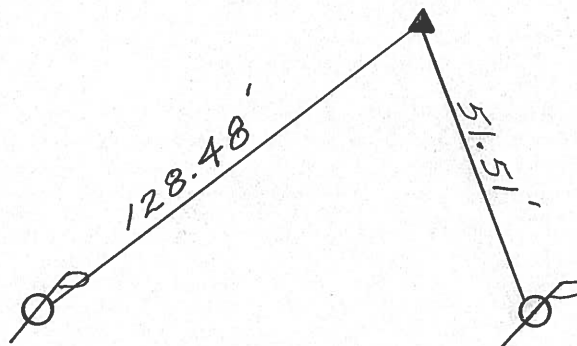
S.L.M. 351+88



P.I.

FO. 1" IRON PIN

C. PAV'T. S.R. 18



County Seneca S.R. # 18

Date 5-15-80

Township Loudon

Weather Fair

Section 13

Temp. 63°

T₂N, R₁E

Personnel Schneider

Messer

Barbour

Cronin

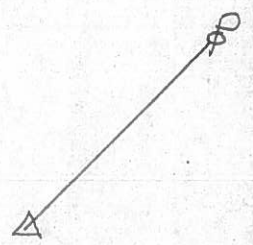
Ripple Geyman



(2)



S.R. #18

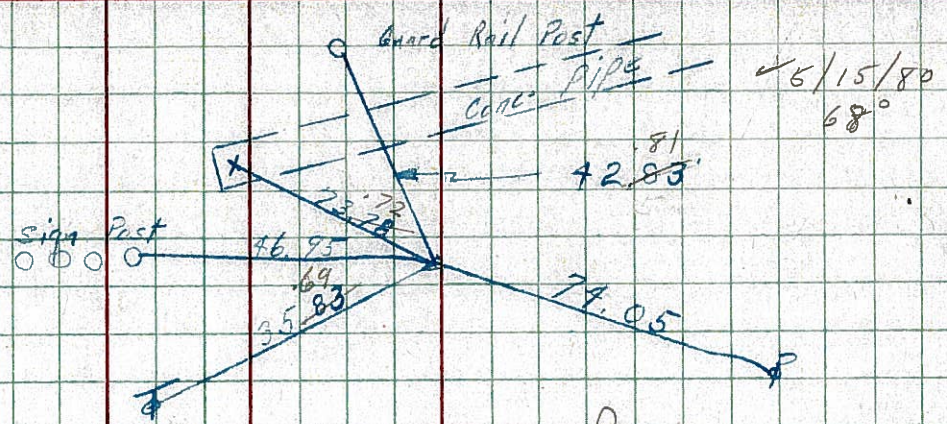


P.I.
 339+44.05
 Iron Pin

PERSONNEL TITLE PERSONNEL TITLE COUNTY Seneca DATE 10-17-68
 WASSER S. R. 18 WEATHER Cloudy
 BARBEUR
 REDDING SEC Easteria to Bascom TEMP 70°
 DESCRIPTION Tie for Control Points

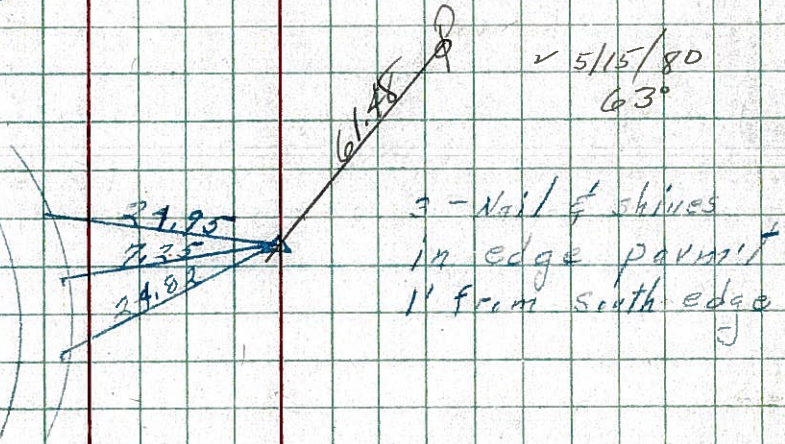
22

P.I.
 352+29.75
 Iron Pin
 8111



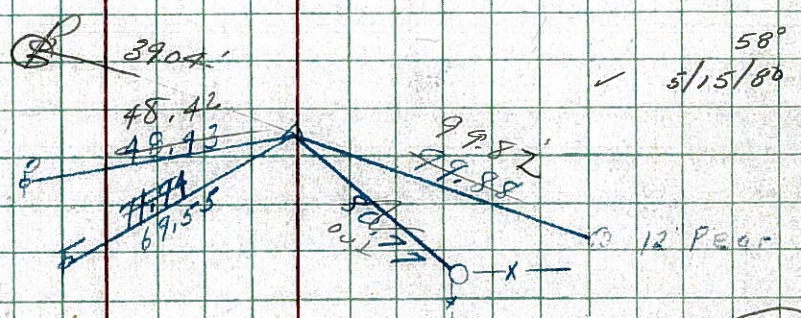
21

P.I.
 339+19.05
 Iron Pin
 8110



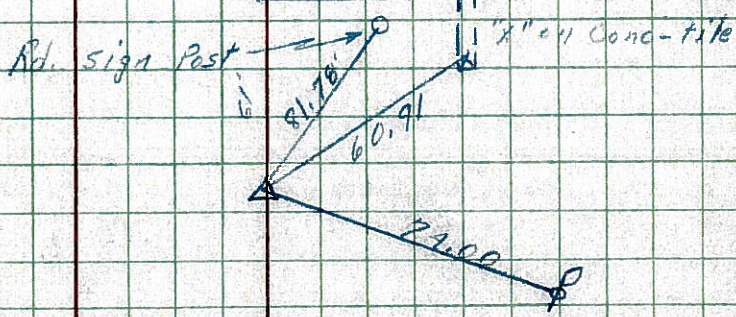
20

P.I.
 337+63.25 (Survey)
 R.R. Spk.
 8109



19

I. Pipe on Top
 P.I.
 282+31.67 (Survey)
 F.A. Spk. 7" down
 1/2' off edge permit
 8108



17-A

608 LW
 ST-66 to hill flagman

PERSONNEL	TITLE	PERSONNEL	TITLE	COUNTY	Seneca	DATE	10-17-68
Schneider		Potts		S. R.	18	WEATHER	cloudy
Mosser				SEC.	Eastoria to Baseom	TEMP.	70°
Barbour							
Redding							

DESCRIPTION Tie for Control Points JOB NO. _____

