

O.D.O.T. DISTRICT 2 SURVEY OFFICE (USE ONLY)

PERSONNEL

REFERENCE NO. 23

SHEET 22 OF 48

NOTES CORDES
 H.C. HOMAN
 R.C. VAN DUSEN
CANTERBURY

DATE 6/28/01
 WEATHER SUNNY
 TEMP. 90°F

ROUTE SR 18
 COUNTY SENECA
 TOWNSHIP LOUDON
 SECTION 13

DWG BY NIESE PID NO PID

T 2 N R 13 E

TYPE MONUMENT P.K./WASHER

ON SURFACE - ~~BELOW~~ ON

OFFSET ☉ PAVEMENT 7.5' LT : RT

- TO - EDGE PAVEMENT

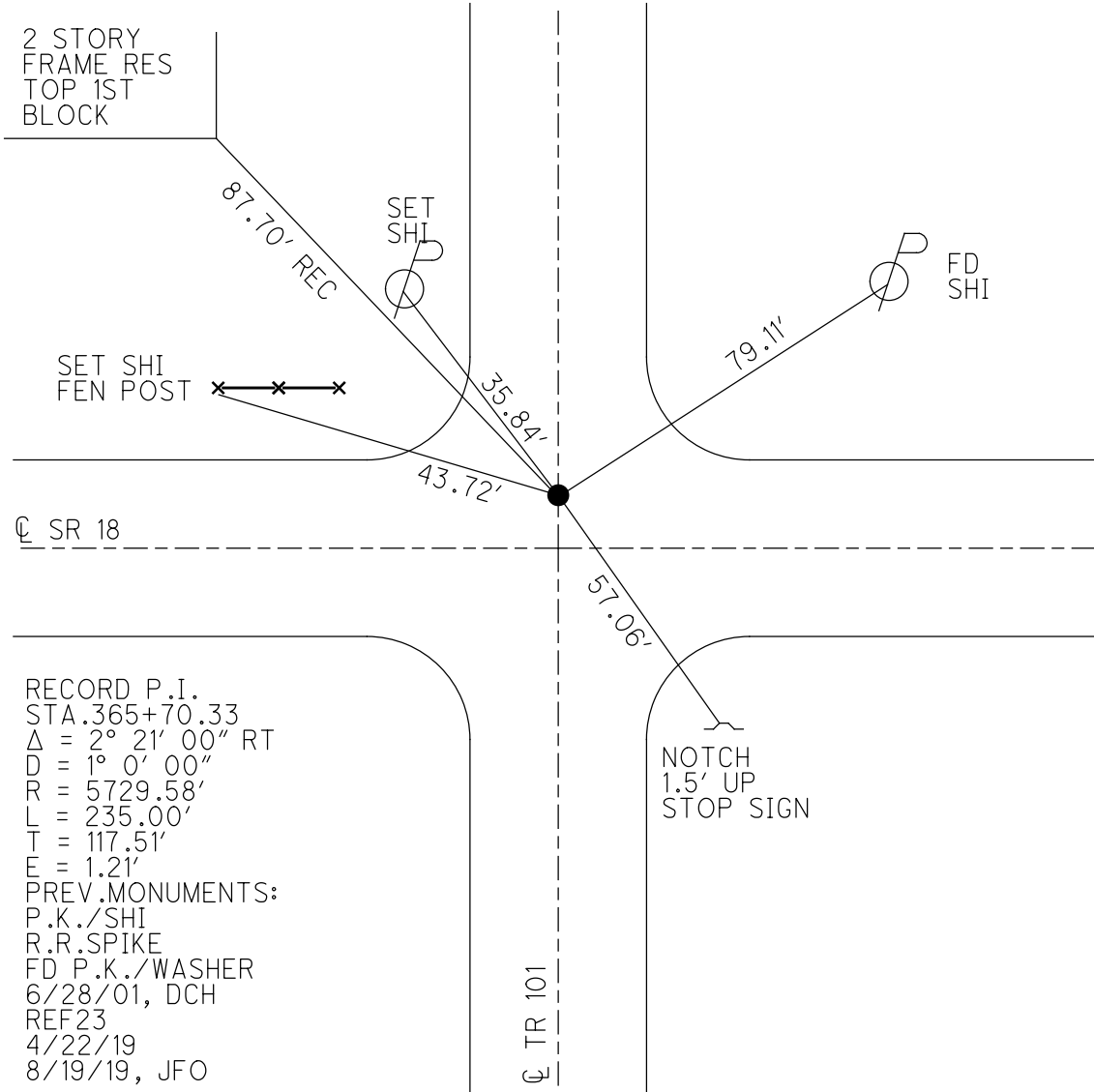
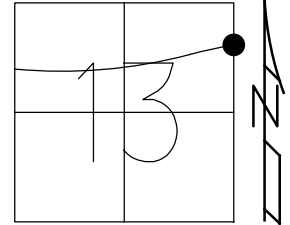
STATION: 378+17

HORZ.DATUM: NAD83(2011)

GEOID: 2012A

GRID: NORTHING: 535432.822

EASTING: 1746878.518



RECORD P.I.
 STA. 365+70.33
 $\Delta = 2^\circ 21' 00''$ RT
 $D = 1^\circ 0' 00''$
 $R = 5729.58'$
 $L = 235.00'$
 $T = 117.51'$
 $E = 1.21'$
 PREV. MONUMENTS:
 P.K./SHI
 R.R.SPIKE
 FD P.K./WASHER
 6/28/01, DCH
 REF23
 4/22/19
 8/19/19, JFO

O.D.O.T. DISTRICT 2 SURVEY OFFICE

PERSONNEL

REFERENCE NO. 23

SHEET 4 OF 26

NOTES B. CORDES

H.C. D. HOMAN

DATE 6-28-01

ROUTE 18

R.C. B. VAN DUSEN

WEATHER SUNNY

COUNTY SENECA

M. CANTERBURY

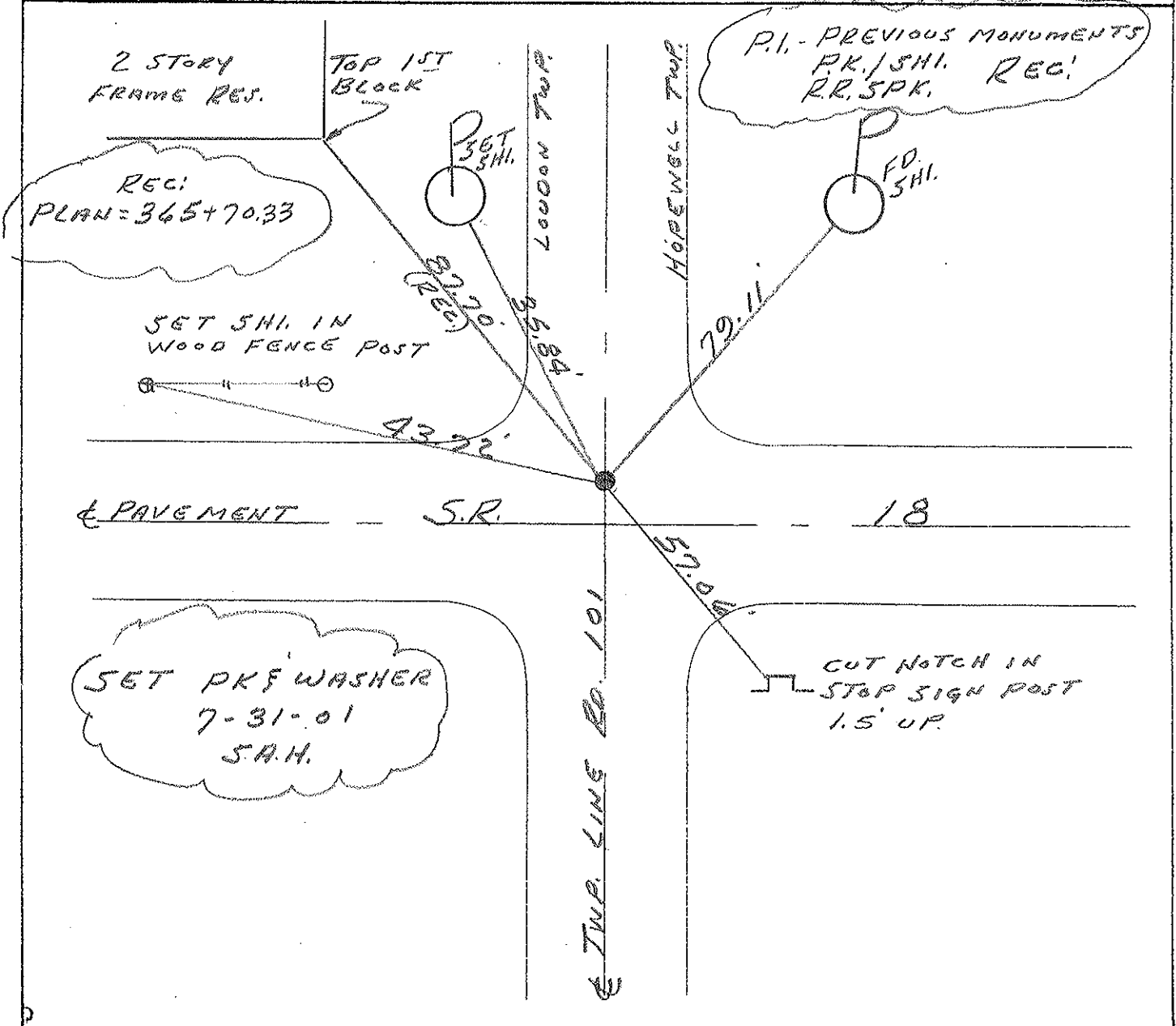
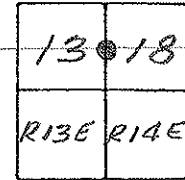
TEMP. +90° F.

TOWNSHIP LOONDON & HOPEWELL

SECTION 13 & 18

T. 2. N. R. 13 & 14 E

TYPE MONUMENT PK / WASHER
 ON SURFACE - BELOW YES
 LEFT - € PAV'T. - RIGHT 7.5
- TO - EDGE PAVEMENT
 S.L.M. 378+17



O.D.O.T. DISTRICT 2 SURVEY OFFICE

PERSONNEL

REFERENCE NO. 23

SHEET 4 OF 27

NOTES CHEHEV

H.C. BARBOUR

R.C. RIPPLE

DATE 10-9-1991

WEATHER SUNNY

TEMP. 70°

ROUTE 18

COUNTY SENECA

TOWNSHIP LOUON E HOPEWELL

SECTION 13 & 18

T2 N R13 & 14 E

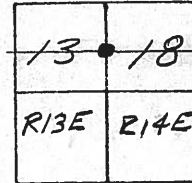
TYPE MONUMENT SET PK/WASHER

ON SURFACE - BELOW

LEFT- & PAV'T. - RIGHT 7.5'

TO EDGE PAVEMENT

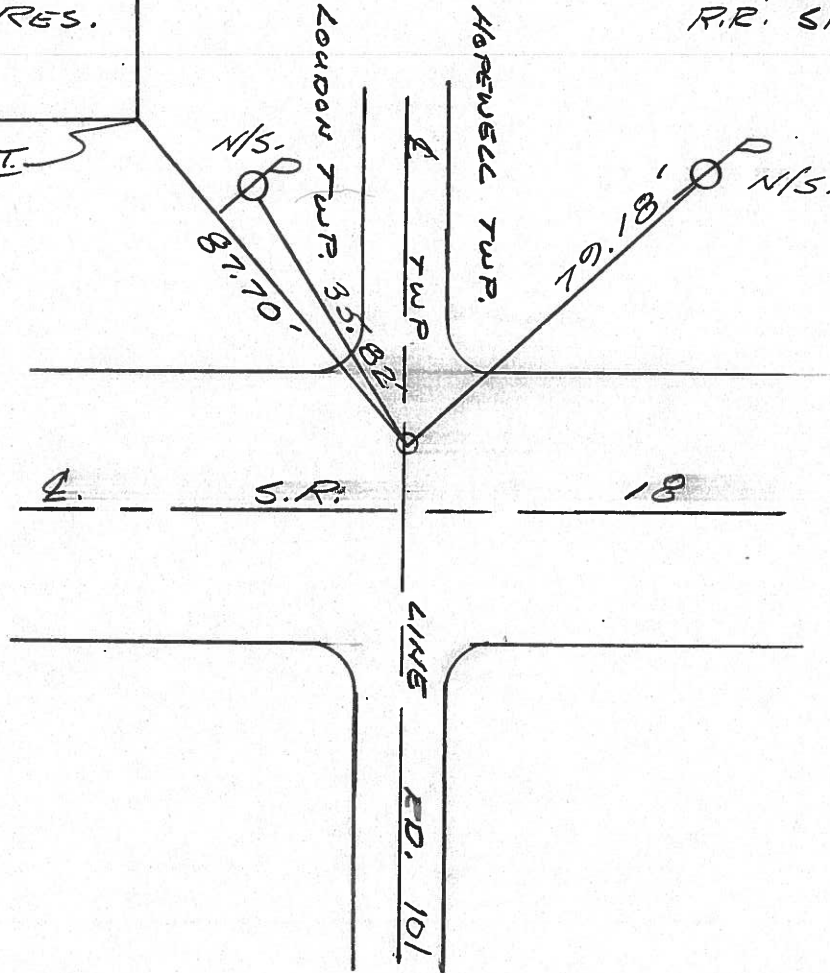
S.L.M. 378+17



PLAN 365+70.33
2 STORY
FRAME RES.

P.I. - PREVIOUS MONUMENTS:
P.K./SHI.
R.R. SPK.

TOP 1ST.
BLOCK



ODOT. DISTRICT 2 SURVEY OFFICE

Sht. ___ of ___

4

County Seneca S.R. # 18

Date OK-9-10-80-G.W.S.
5-15-80

Township Loudon & Hopewell

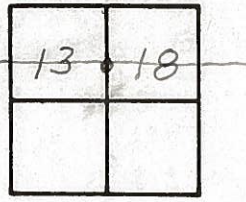
Weather Fair

Section 13 & 18

Temp. 63°

T2N, R13E

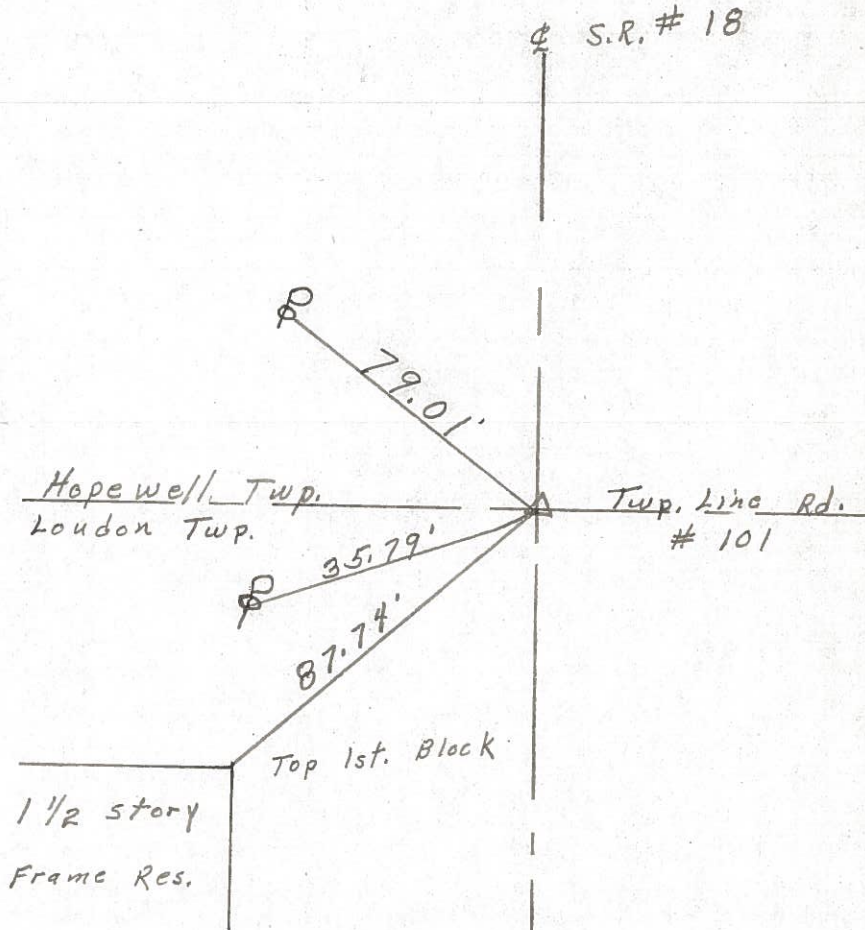
Personnel Schneider
Mosser
Barbour
Cronin
Ripple Geyman



(23)



P. I.
365+ 70.33 survey
R. R. spk.
SET P.K. & SHI.



PERSONNEL	TITLE	PERSONNEL	TITLE	COUNTY	DATE
Schneider		Potts		Seneca	10-17-68
Mosser				S. R. 18	WEATHER Fair
Barbour				SEC. Fostoria to Bascom	TEMP. 75°
Redding					

DESCRIPTION: Ties for Control Points

