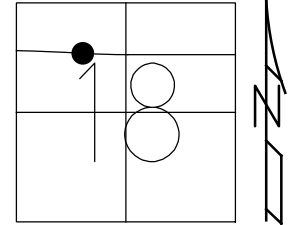


O.D.O.T. DISTRICT 2 SURVEY OFFICE (USE ONLY)

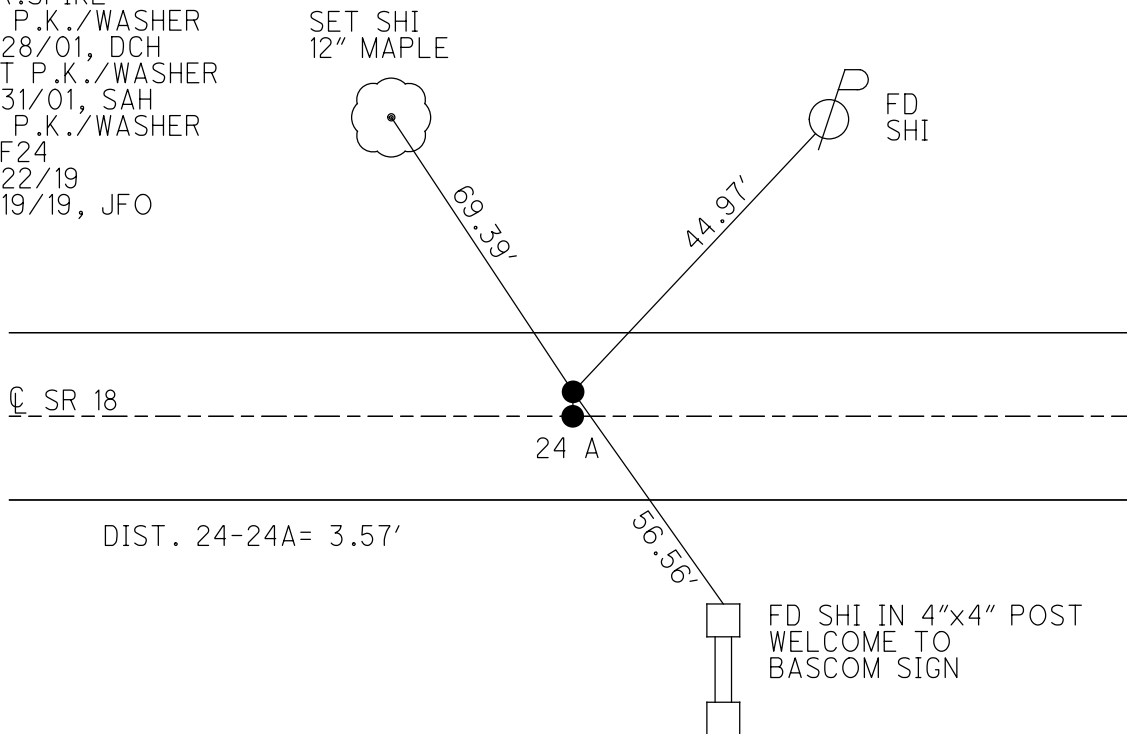
PERSONNEL _____ REFERENCE NO. 24 SHEET 23 OF 48
 NOTES CORDES DATE 6/28/01 ROUTE SR 18
 H.C. HOMAN WEATHER SUNNY COUNTY SENECA
 R.C. VAN DUSEN TEMP. 90° TOWNSHIP HOPEWELL
CANTERBURY SECTION 18
 DWG BY NIESE PID NO PID T 2 N R 14 E

TYPE MONUMENT P.K./WASHER
 ON SURFACE - ~~BELOW~~ ON
 OFFSET \varnothing PAVEMENT 3.0' LT : ~~RT~~
11.0' TO LT EDGE PAVEMENT
 STATION: 391+69



HORZ.DATUM: NAD83(2011) GEOID: 2012A
 GRID: NORTHING: 535381.643 EASTING: 1748194.511

RECORD: P.I.
 \varnothing SURVEY-BACK
 STA.378+88.39
 PREV MONUMENTS
 P.K.NAIL
 R.R.SPIKE
 FD P.K./WASHER
 6/28/01, DCH
 SET P.K./WASHER
 7/31/01, SAH
 FD P.K./WASHER
 REF24
 4/22/19
 8/19/19, JFO



O.D.O.T. DISTRICT 2 SURVEY OFFICE

PERSONNEL

REFERENCE NO. 24

SHEET 5 OF 26

NOTES B. CORDES

H.C. D. HOMAN

DATE 6-28-01

ROUTE 18

R.C. B. VAN DUSEN

WEATHER SUNNY

COUNTY SENECA

M. CANTERBURY

TEMP. +90° F

TOWNSHIP HOPWELL

SECTION 18

T 2 N R 14 E

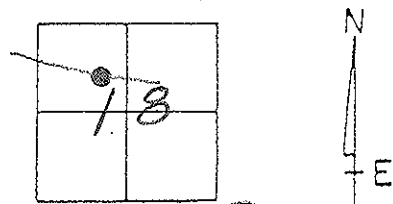
TYPE MONUMENT PK^s & WASHERS

ON SURFACE - BELOW YES

LEFT - 0 PAV'T. - RIGHT 3' LT. & 0.5 RT.

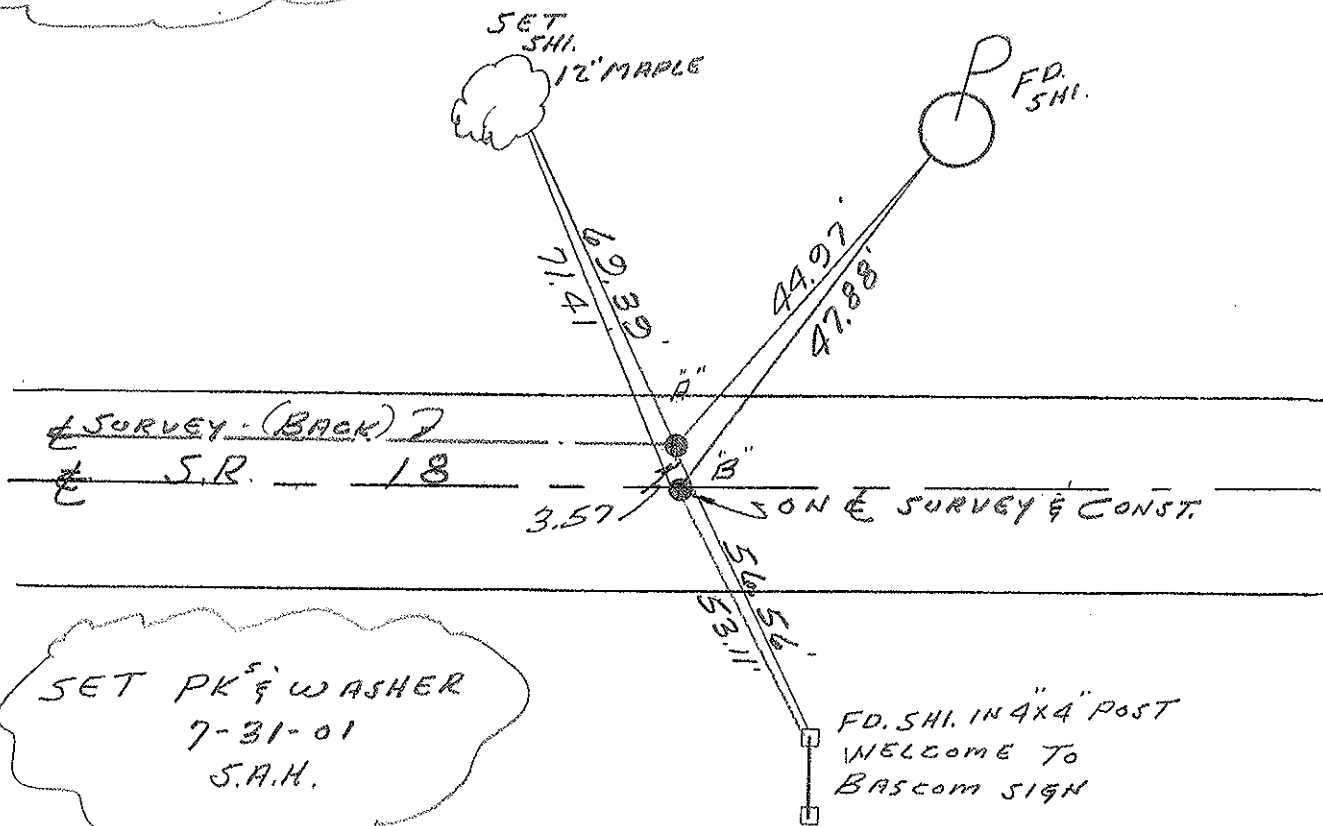
11.195 TO 5 EDGE PAVEMENT "A" "B"

S.L.M. 391+69



PREVIOUS MONUMENTS
2 PK. NAILS REC!
2 R.R. SPKS.

REC!
PLAN STA. = 378+88.39



SET PK^s & WASHER
7-31-01
S.A.H.

O.D.O.T. DISTRICT 2 SURVEY OFFICE

PERSONNEL

REFERENCE NO. 24

SHEET 5 OF 27

NOTES CHENEY

H.C. BARBOUR

R.C. RIPPLE

DATE 10-9-1991

WEATHER SUNNY

TEMP. 70°

ROUTE 18

COUNTY SENECA

TOWNSHIP HOPEWELL

SECTION 18

T 2 N R 14 E

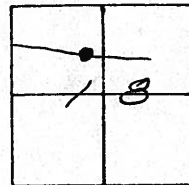
TYPE MONUMENT SET PKs/WASHERS

ON SURFACE - ~~BELOW~~

LEFT - CL PAV'T. - RIGHT 3' LT. & 0.5' ET.

11' ± 14.5' TO S. EDGE PAVEMENT

S.L.M. 391+34

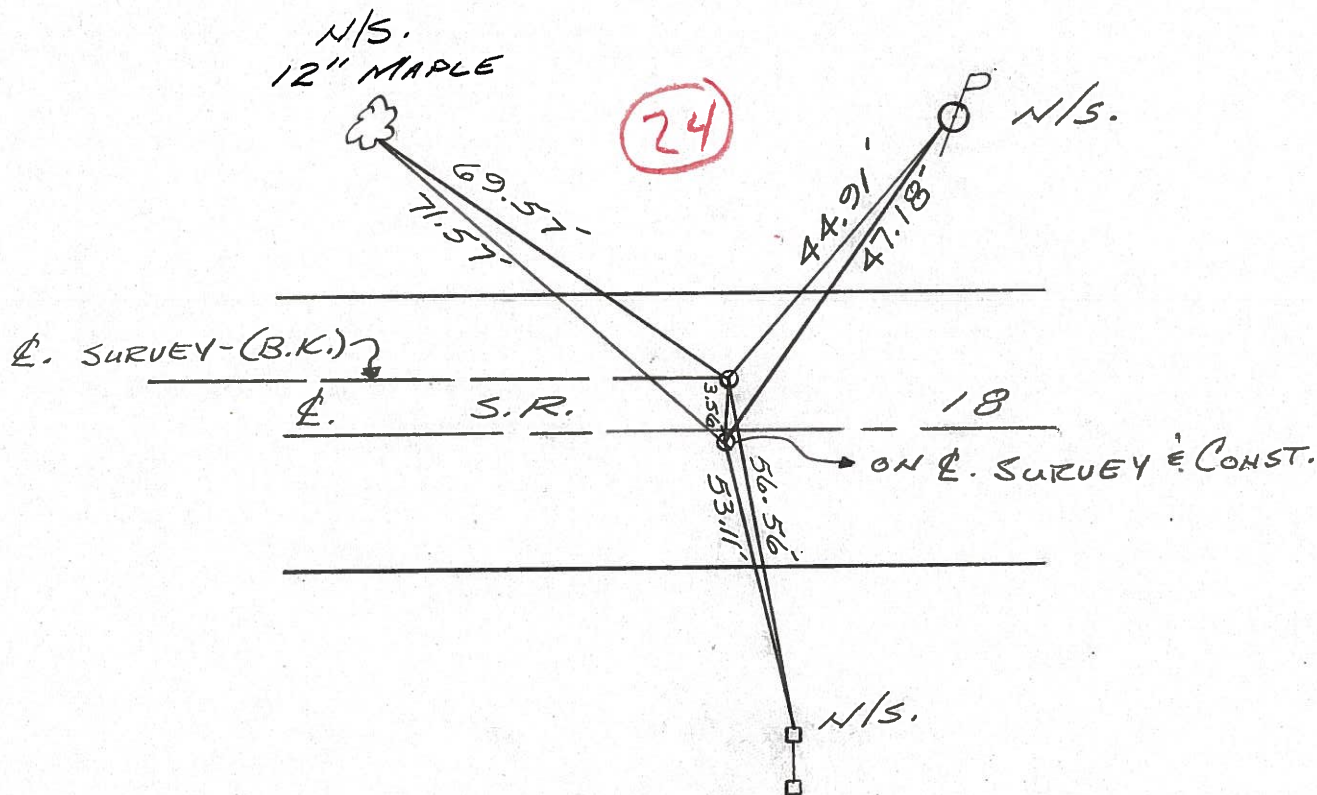


PREVIOUS MONUMENTS:

2 P.K. NAILS

2 R.R. SPKS.

PLAN STA. 378+88.39



ODOT. DISTRICT 2 SURVEY OFFICE

Sht. ___ of ___

County Seneca S.R.# 18

Date OK-9-11-80-G.W.S.
5-15-80

Township Hopewell

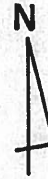
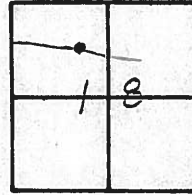
Weather Fair

Section 18

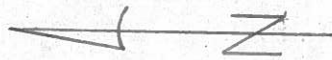
Temp. 63°

T₂N, R₁₄E

Personnel Schneider
Mosser
Barbour
Gronin
Ripple Geyman



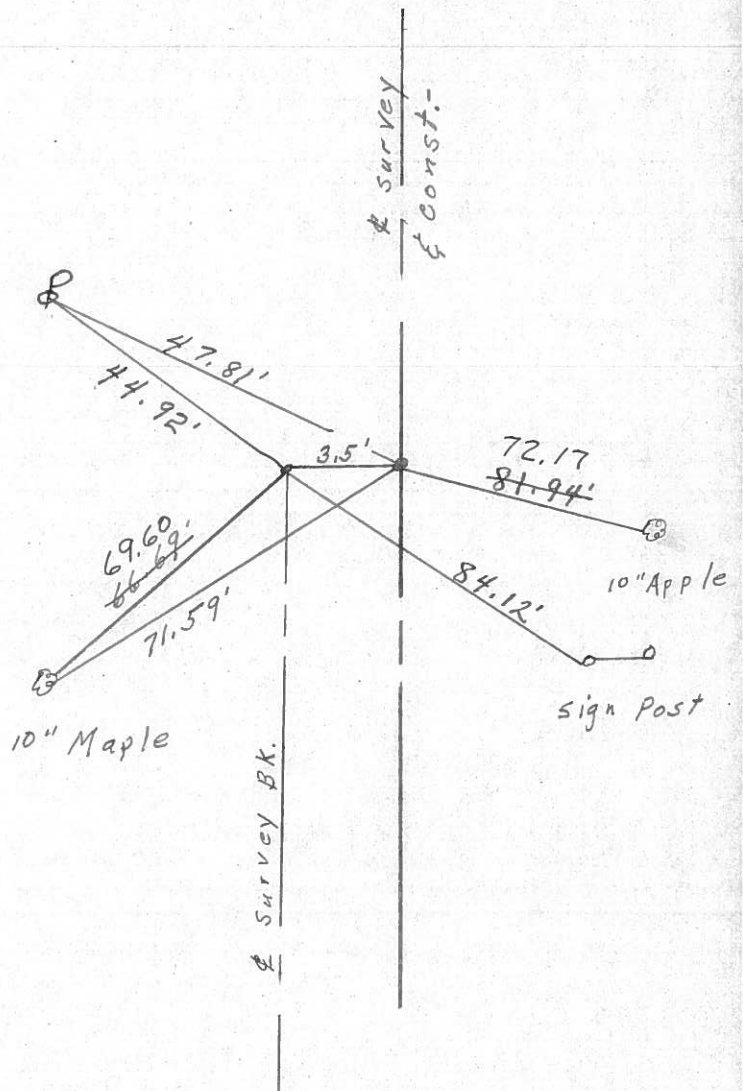
(24)



378 + 88.39 P.O.T. Survey

2- R.R. Spk.

SET P.K. NAILS



| PERSONNEL | TITLE | PERSONNEL | TITLE | COUNTY | DATE | WEATHER | TEMP. |
|-----------|-------|-----------|-------|-------------------------|----------|---------|-------|
| Schneider | | Patta | | Seneca | 10-17-68 | Fair | 75° |
| Mosser | | | | S. R. 18 | | | |
| Barbour | | | | SEC. Fostoria to Bascom | | | |
| Redding | | | | | | | |

DESCRIPTION Ties for Control Points

