

O.D.O.T. DISTRICT 2 SURVEY OFFICE (USE ONLY)

PERSONNEL

REFERENCE NO. 24 A

SHEET 24 OF 48

NOTES CORDES
 H.C. HOMAN
 R.C. VAN DUSEN
CANTERBURY

DATE 6/28/01
 WEATHER SUNNY
 TEMP. 90°

ROUTE SR 18
 COUNTY SENECA
 TOWNSHIP HOPEWELL
 SECTION 18

DWG BY NIESE PID NO PID

T 2 N R 14 E

TYPE MONUMENT P.K./WASHER

ON SURFACE - ~~BELOW~~ ON

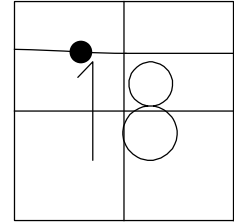
OFFSET Q PAVEMENT 0.5' RT : RT

14.5' TO LT EDGE PAVEMENT

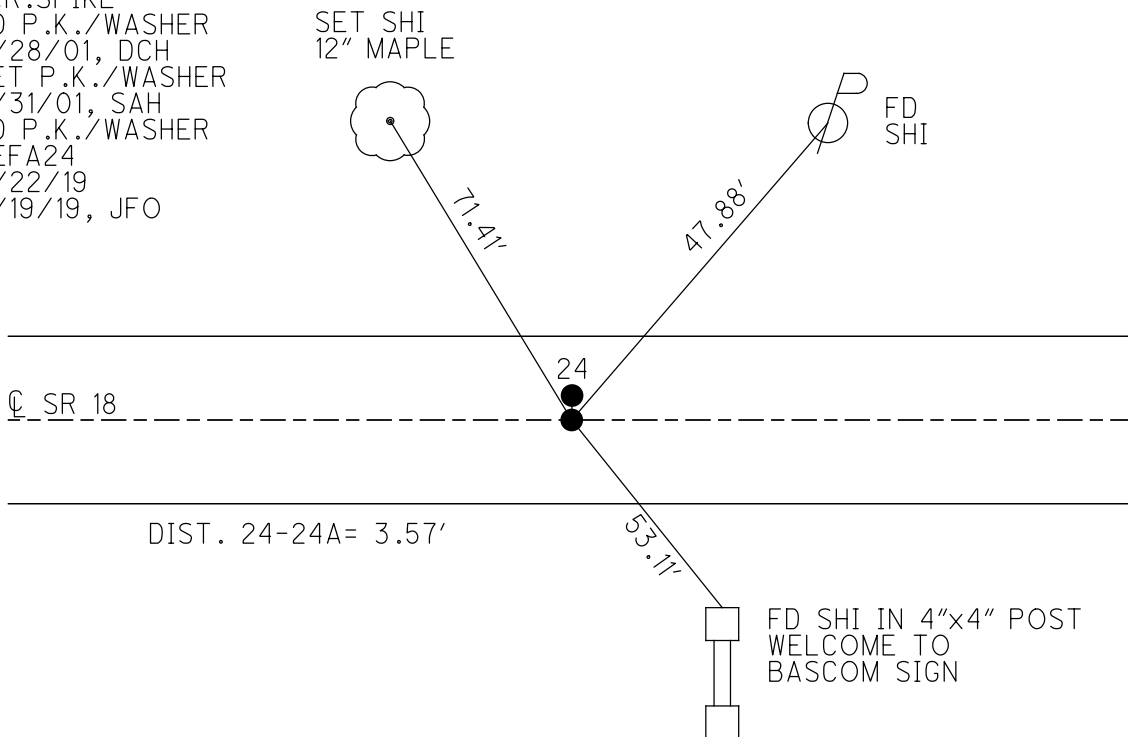
STATION: 391+69

HORZ.DATUM: NAD83(2011) GEOID: 2012A

GRID: NORTHING: 535378.070 EASTING: 1748194.401



RECORD: P.I.
 © SURVEY & CONSTR.
 STA. 378+88.39
 PREV MONUMENTS
 P.K.NAIL
 R.R.SPIKE
 FD P.K./WASHER
 6/28/01, DCH
 SET P.K./WASHER
 7/31/01, SAH
 FD P.K./WASHER
 REFA24
 4/22/19
 8/19/19, JFO



O.D.O.T. DISTRICT 2 SURVEY OFFICE

PERSONNEL

REFERENCE NO. 24

SHEET 5 OF 26

NOTES B. CORDES

H.C. D. HOMAN

DATE 6-28-01

ROUTE 18

R.C. B. VAN DUSEN

WEATHER SUNNY

COUNTY SENECA

M. CANTERBURY

TEMP. +90° F

TOWNSHIP HOPWELL

SECTION 18

T 2 N R 14 E

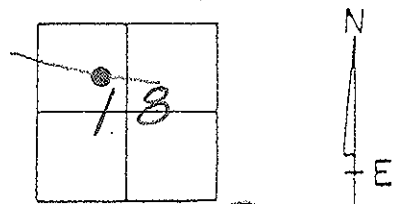
TYPE MONUMENT PK^s & WASHERS

ON SURFACE - BELOW YES

LEFT - 0 PAV'T. - RIGHT 3' LT. & 0.5 RT.

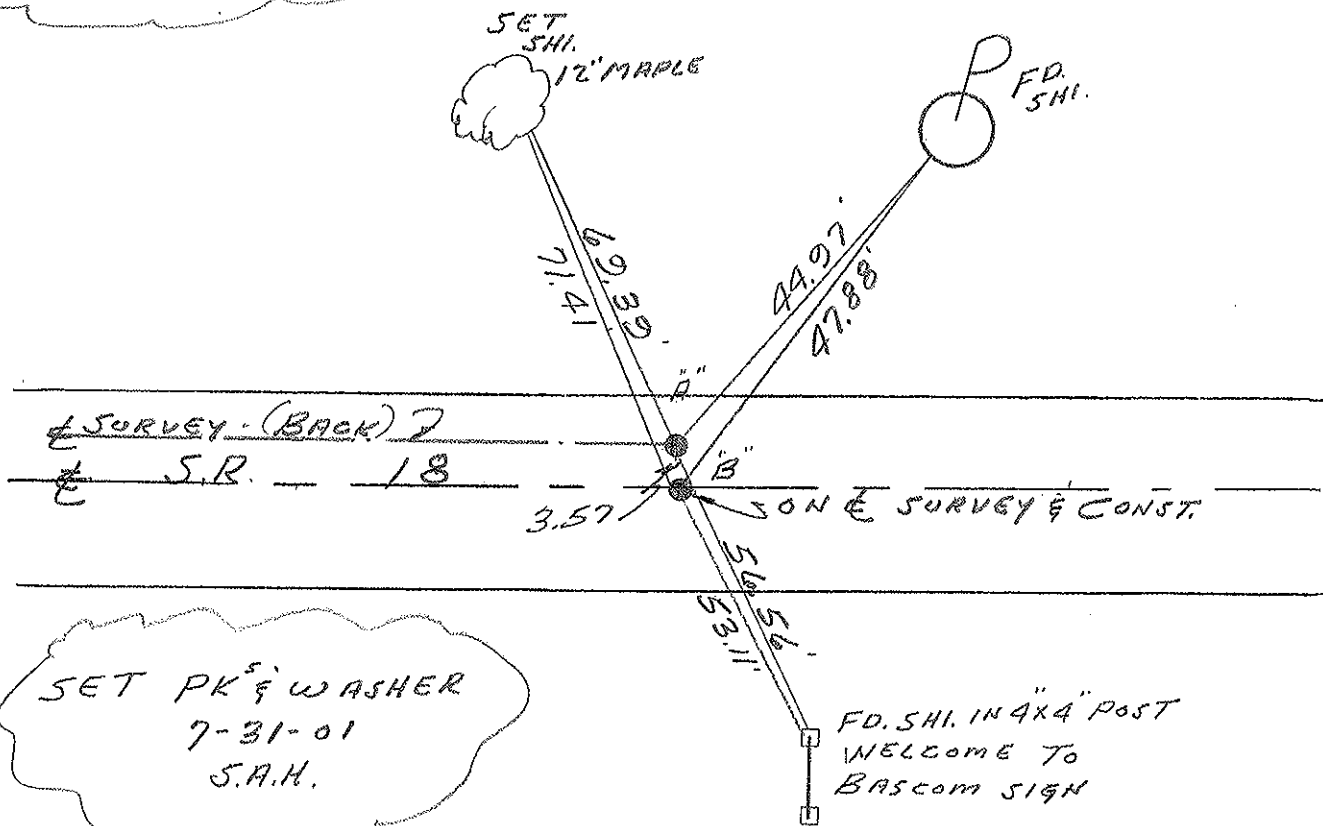
11.195 TO 5 EDGE PAVEMENT "A" "B"

S.L.M. 391+69



PREVIOUS MONUMENTS
2 PK. NAILS REC!
2 R.R. SPKS.

REC!
PLAN STA. = 378+88.39



SET PK^s & WASHER
7-31-01
S.A.H.

FD. SHI. IN 4x4 POST
WELCOME TO
BASCOM SIGN

O.D.O.T. DISTRICT 2 SURVEY OFFICE

PERSONNEL

REFERENCE NO. 24

SHEET 5 OF 27

NOTES CHENEY

H.C. BARBOUR

DATE 10-9-1991

ROUTE 18

R.C. RIPPLE

WEATHER SUNNY

COUNTY SENECA

TEMP. 70°

TOWNSHIP HOPEWELL

SECTION 18

T 2 N R 14 E

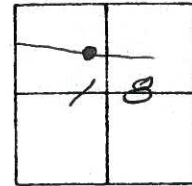
TYPE MONUMENT SET PKs/WASHERS

ON SURFACE - ~~BELOW~~

LEFT - ¢ PAV'T. - RIGHT 3' LT. & 0.5' RT.

11' ± 14.5 TO S. EDGE PAVEMENT

S.L.M. 391+34

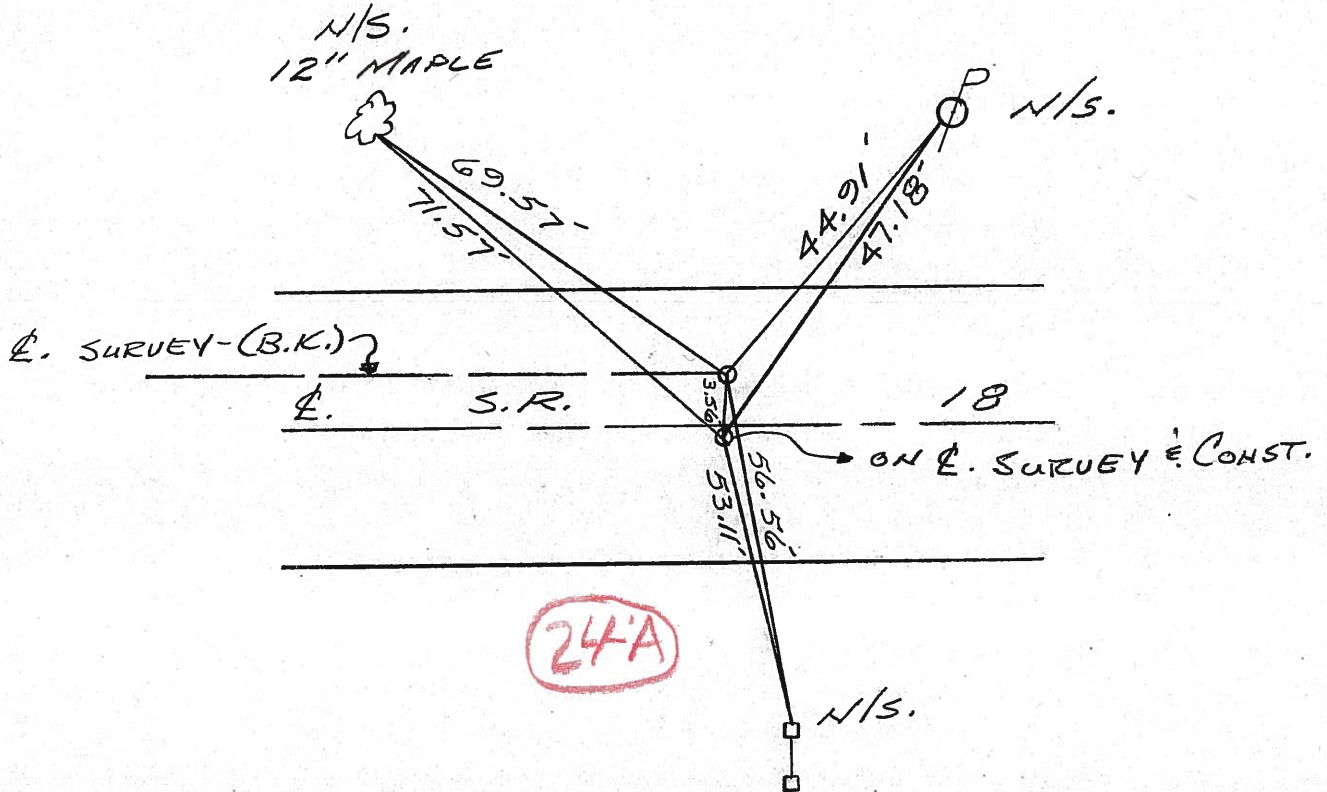


PREVIOUS MONUMENTS:

2 P.K. NAILS

2 R.R. SPKS.

PLAN STA. 378+88.39



24'A

QD.O.T. DISTRICT 2 SURVEY OFFICE

Sht. ___ of ___

County Seneca S.R. # 18

Township Hopewell

Section 18

T₂N, R₄E

Personnel Schneider

Mosser

Barbour

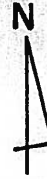
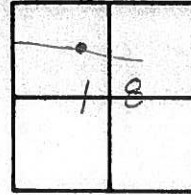
Cronin

Ripple Geyman

Date OK-9-11-80-G.W.S.
5-15-80

Weather Fair

Temp. 63°



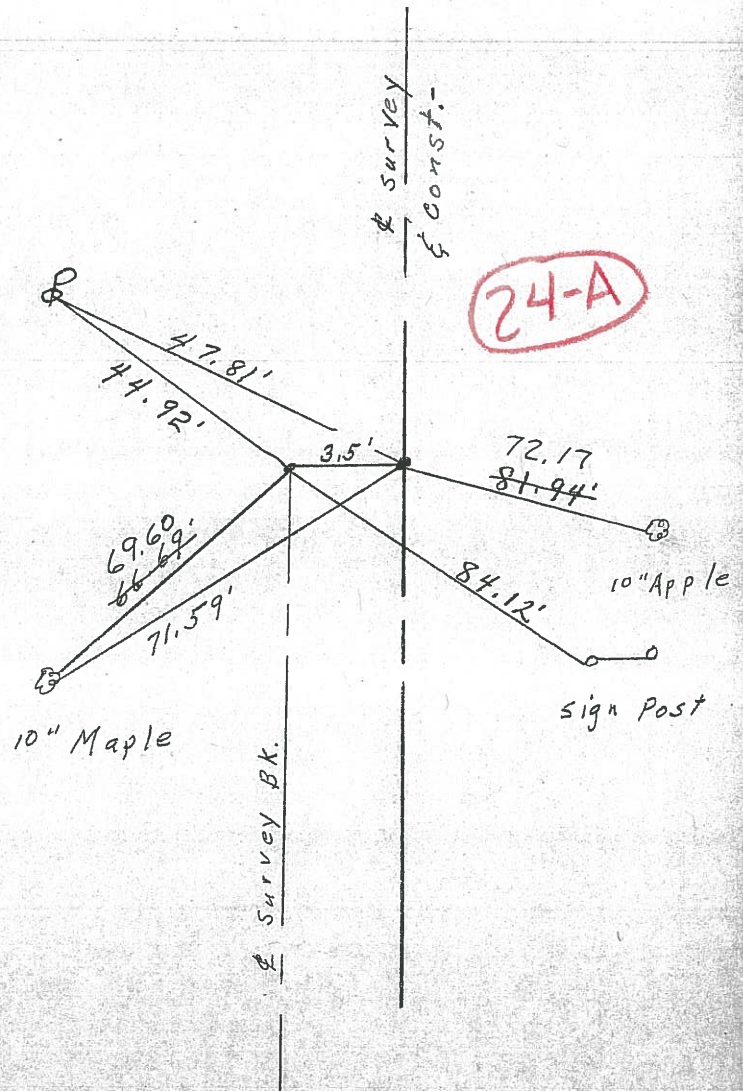
~~24~~



378 + 88.39 P.O.T. Survey

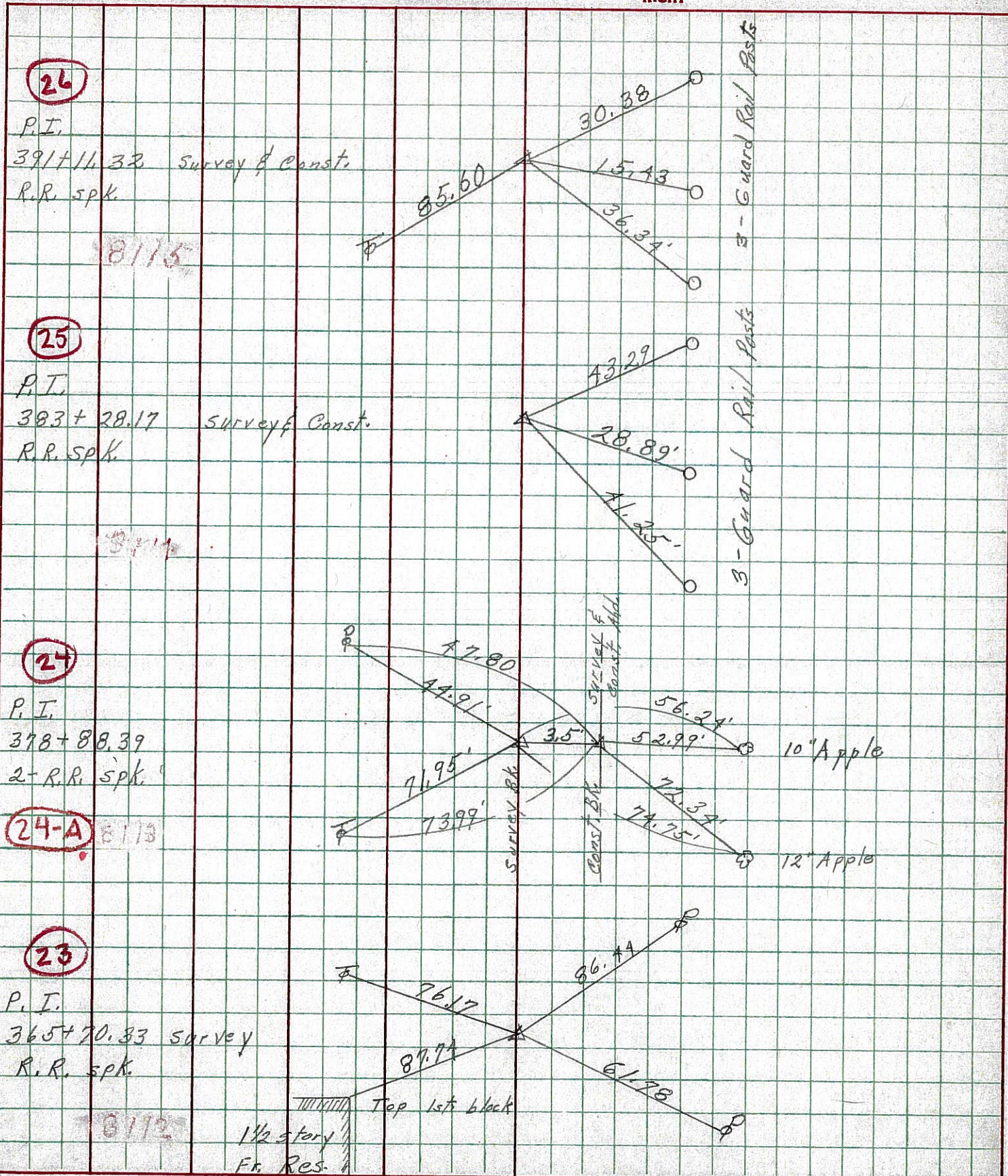
2 - R.R. Spk.

SET P.K. NAILS



PERSONNEL	TITLE	PERSONNEL	TITLE	COUNTY	DATE	WEATHER	TEMP.
Schneider		Patts		Seneca	10-17-68	Fair	75°
Mosser				S. R. 18			
Barbour				SEC. Eastoria to Bascom			
Redding							

DESCRIPTION Ties for Control Points



24

P.I.
391 + 11.33 Survey & Const.
R.R. spk.
8115

25

P.I.
383 + 28.17 Survey & Const.
R.R. spk.
8114

27

P.I.
378 + 88.39
2 - R.R. spk.
8113

24-A

23

P.I.
365 + 70.33 Survey
R.R. spk.
8112
1 1/2 story Fr. Res.
Top 1st block

