

O.D.O.T. DISTRICT 2 SURVEY OFFICE (USE ONLY)

PERSONNEL

REFERENCE NO. 25

SHEET 25 OF 48

NOTES CORDES
 H.C. HOMAN
 R.C. VAN DUSEN
CANTERBURY

DATE 6/28/01
 WEATHER SUNNY
 TEMP. 90°

ROUTE SR 18
 COUNTY SENECA
 TOWNSHIP HOPEWELL
 SECTION 18
 T 2 N R 14 E

DWG BY NIESE PID NO PID

TYPE MONUMENT P.K./WASHER

ON SURFACE - ~~BELOW~~ ON

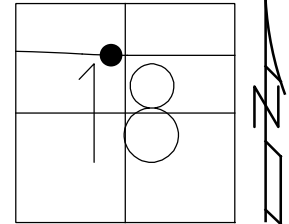
OFFSET C PAVEMENT 8.5' LT : ~~RT~~

3.0' TO LT EDGE PAVEMENT

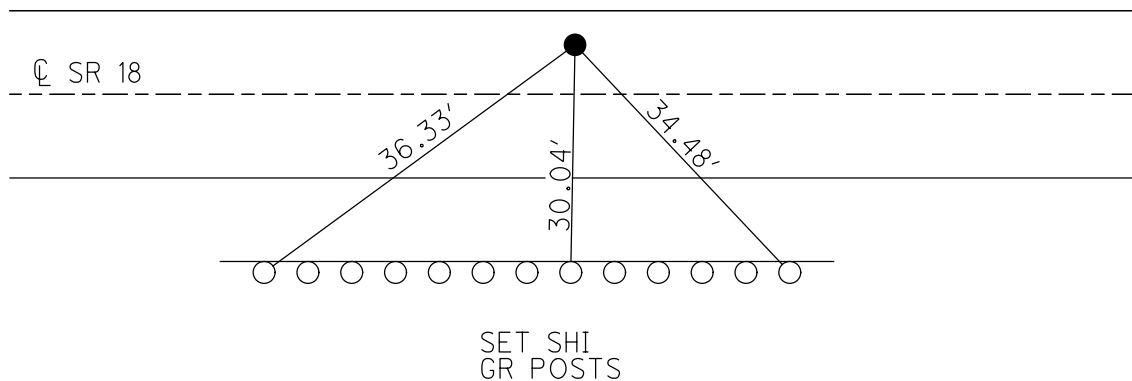
STATION: 396+10

HORZ.DATUM: NAD83(2011) GEOID: 2012A

GRID: NORTHING: 535360.868 EASTING: 1748634.311



RECORD P.I.:
 STA 383+28.17
 $\Delta=7^{\circ}05'00''$ RT
 $D=1^{\circ}20'00''$
 $R=4297.18'$
 $L=531.25'$
 $T=265.96'$
 $E=8.22'$
 PREV. MONUMENTS
 P.K./SHI
 R.R.SPIKE
 FD P.K./WASHER
 6/28/01, DCH
 SET P.K./WASHER
 7/31/01, SAH
 FD P.K./WASHER
 REF25
 4/22/19
 8/19/19, JFO



O.D.O.T. DISTRICT 2 SURVEY OFFICE

PERSONNEL

REFERENCE NO. 25

SHEET 6 OF 26

NOTES B. Cordes

H.C. D. Homan

DATE 6-28-01

ROUTE 18

R.C. E. Van Dusen

WEATHER SUNNY

COUNTY SENECA

M. Canterbury

TEMP. +20°F

TOWNSHIP HOPEWELL

SECTION 18

T2 NR 14 E

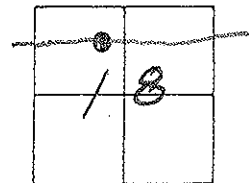
TYPE MONUMENT PK& WASHER

ON SURFACE - BELOW YES

LEFT - & PAV'T. - RIGHT 8.5

3' JOLT. EDGE PAVEMENT

S.L.M. 306+10

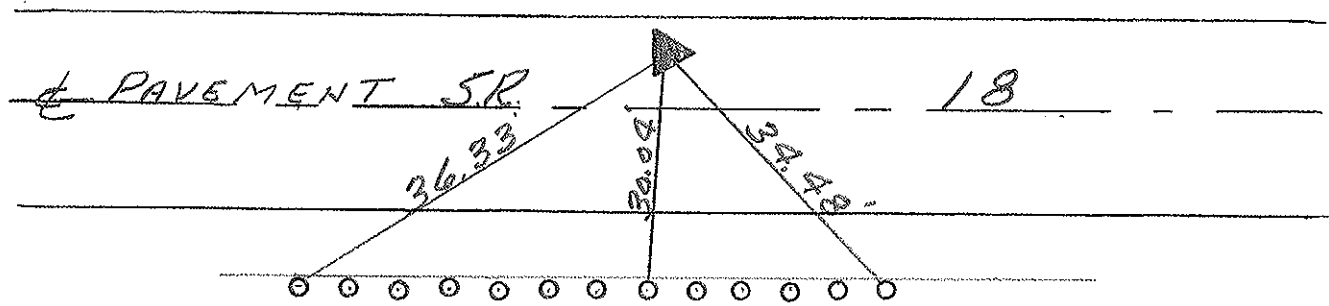


PREVIOUS MONUMENTS

PK/SHI. REC!
RR SPK.
P.I.

PLAN STA. 383+28.17

SET PK& WASHER
7-31-01
S.A.H.



SET NAILS IN
IN FACE OF
GUARD RAIL POSTS

O.D.O.T. DISTRICT 2 SURVEY OFFICE

PERSONNEL

REFERENCE NO. 25

SHEET 6 OF 27

NOTES CHENEY

H.C. BARBOUR

DATE 10-9-1991

ROUTE 18

R.C. RIPPLE

WEATHER PARTLY CLOUDY

COUNTY SENECA

TEMP. 70°

TOWNSHIP HOPWELL

SECTION 18

T. 2 N. R. 14 E.

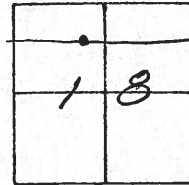
TYPE MONUMENT SET PK/WASHER

ON SURFACE - ~~BELOW~~

LEFT- & PAV'T. - RIGHT 8.5'

3' TO N. EDGE PAVEMENT

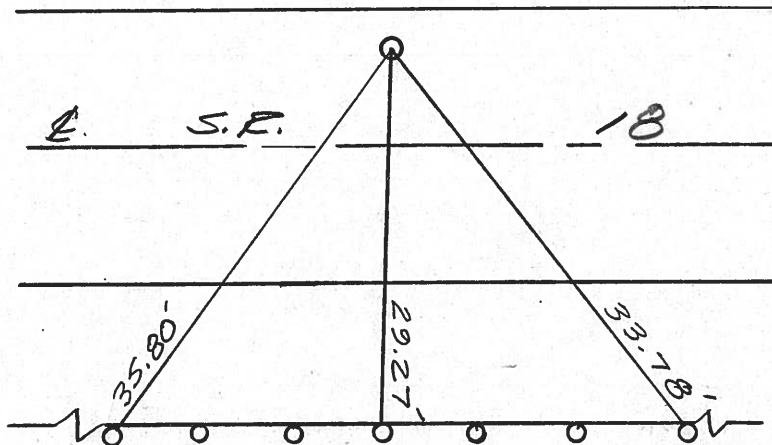
S.L.M. 395+75



PREVIOUS MONUMENTS:
 PK / SHI.
 R.R. SPK.

PLAN STA 383+28.17

P. 1.



USED BOLT HEADS IN
 G. R. POSTS

* NOTE: SET SHINER IN TOP
 OF POSTS-USED FOR
 LOCATION PURPOSES
 ONLY.