

O.D.O.T. DISTRICT 2 SURVEY OFFICE (USE ONLY)

PERSONNEL

REFERENCE NO. 26

SHEET 26 OF 48

NOTES CORDES

DATE 6/28/01

ROUTE SR 18

H.C. HOMAN

WEATHER SUNNY

COUNTY SENECA

R.C. CANTERBURY  
VAN DUSEN

TEMP. 90°

TOWNSHIP HOPEWELL

DWG BY NIESE PID NO PID

SECTION 18

T 2 N R 14 E

TYPE MONUMENT P.K./WASHER

ON SURFACE - ~~BELOW~~ ON

OFFSET 9.0' RT : ~~LT~~

3.0' TO RT EDGE PAVEMENT

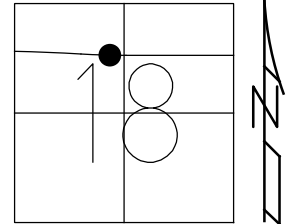
STATION: 404+01

HORZ.DATUM: NAD83(2011)

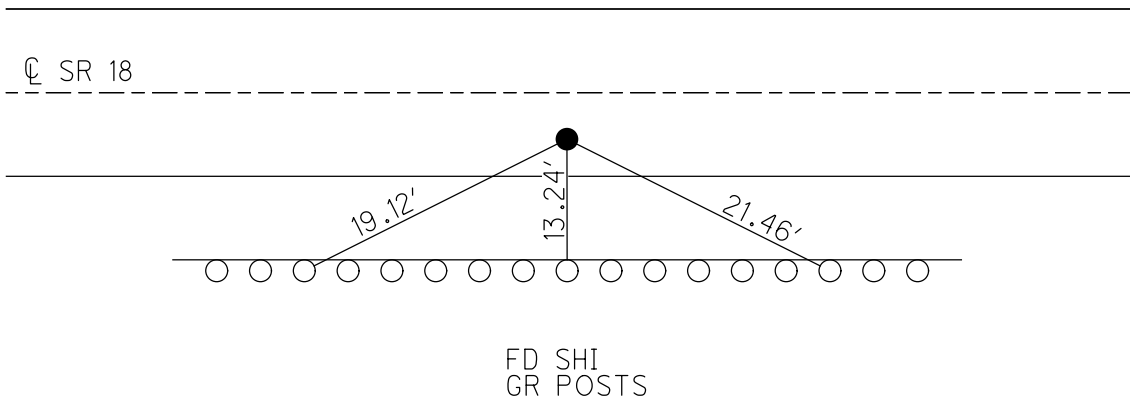
GEOID: 2012A

GRID: NORTHING: 535233.424

EASTING: 1749407.419



RECORD P.I.:  
 STA 391+11.32  
 $\Delta=8^{\circ}25'00''$  LT  
 $D=2^{\circ}30'00''$   
 $R=2291.83'$   
 $L=300.00'$   
 $T=318.74'$   
 $L=36.67'$   
 $E=7.83'$   
 S.C.=390+92.58  
 C.S.=391+29.25  
 PREV MONUMENTS  
 PK/SHI  
 RR SPIKE  
 SET PK/WASHER  
 7/31/01, SAH  
 FD PK/WASHER  
 REF26  
 4/22/19  
 8/19/19, JFO



O.D.O.T. DISTRICT 2 SURVEY OFFICE

PERSONNEL

REFERENCE NO. 26

SHEET 7 OF 26

NOTES CORDES

H.C. HOMAN

DATE 6-28-01

ROUTE 18

R.C. CANTERBURY

WEATHER SUNNY

COUNTY SENECA

VAN DUSEN

TEMP. + 90° F

TOWNSHIP HOPEWELL

SECTION 18

T.2 N. R. 14 E

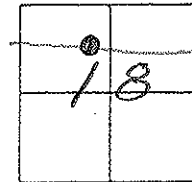
TYPE MONUMENT PK/WASHER

ON SURFACE - BELOW YES

LEFT - & PAV'T. - RIGHT 9.0'

3.0' TO RT. EDGE PAVEMENT

S.L.M. 404+01



P.I. - PREVIOUS MONUMENT:

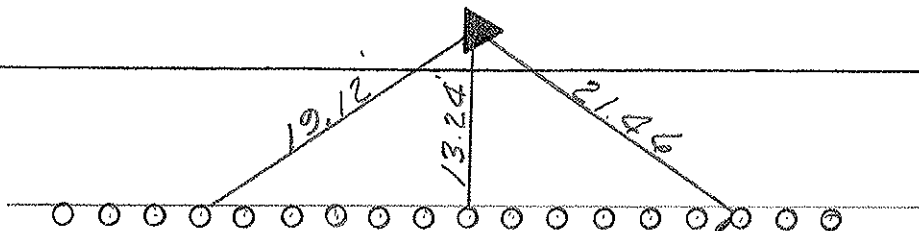
P.K. / S.M. REC:

R.R. SPK.

PLAN STA. = 391+11.32

SET PK & WASHER  
7-31-01  
JAH

& PAVEMENT S.R. 18



FD. NAILS & SHIS THUS  
IN GUARD RAIL POSTS

O.D.O.T. DISTRICT 2 SURVEY OFFICE

PERSONNEL

REFERENCE NO. 26

SHEET 7 OF 27

NOTES CHENEY

H.C. BARBOUR

DATE 10-9-1991

ROUTE 18

R.C. RIPPLE

WEATHER PARTLY CLOUDY

COUNTY SENECA

TEMP. 70°

TOWNSHIP HOPEWELL

SECTION 18

T. 2 N R. 14 E

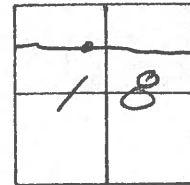
TYPE MONUMENT SET PK/WASHER

ON SURFACE - BELOW

LEFT- & PAV'T. - RIGHT 9'

3' TO S. EDGE PAVEMENT

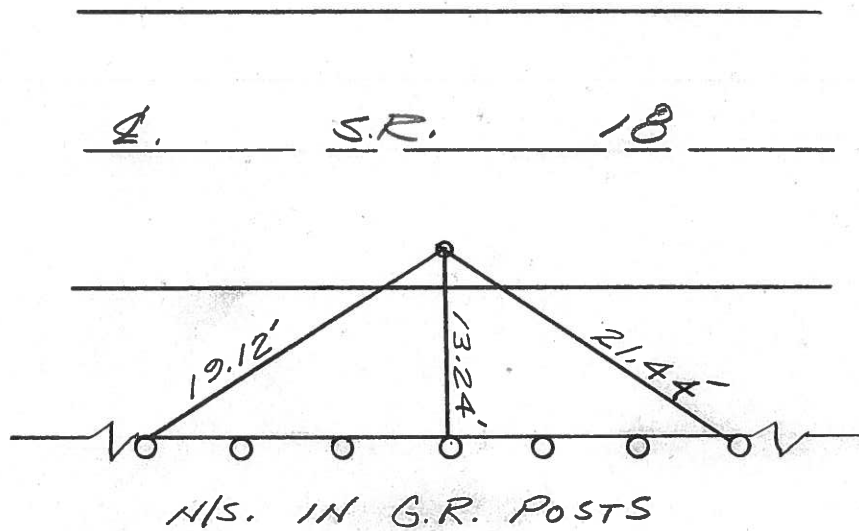
S.L.M. 403+56



P.I. - PREVIOUS MONUMENTS:

PLAN STA = 391+11.32

- P.K. SH1.
- R.R. SPK.



Q.D.O.T. DISTRICT 2 SURVEY OFFICE

Sht. \_\_\_ of \_\_\_

County Seneca S.R. # 18

Date OK-9-11-80 G.W.S.  
5-15-80

Township Hopewell

Weather Fair

Section 18

Temp. 63°

T 2 N, R 4 E

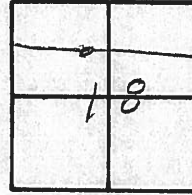
Personnel Schneider

Mosser

Barbour

Cronin

Ripple Geyman



26



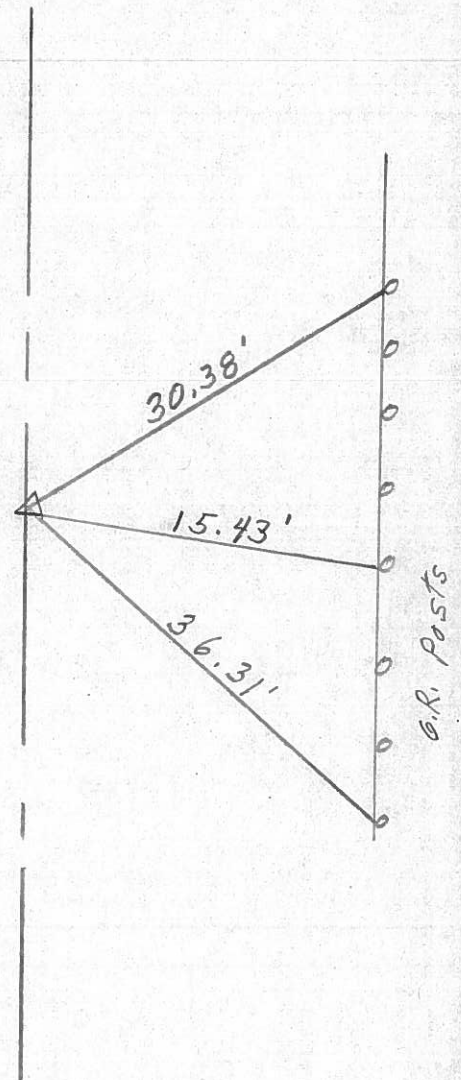
Surveys & Const.

P. I.

391 + 11.32

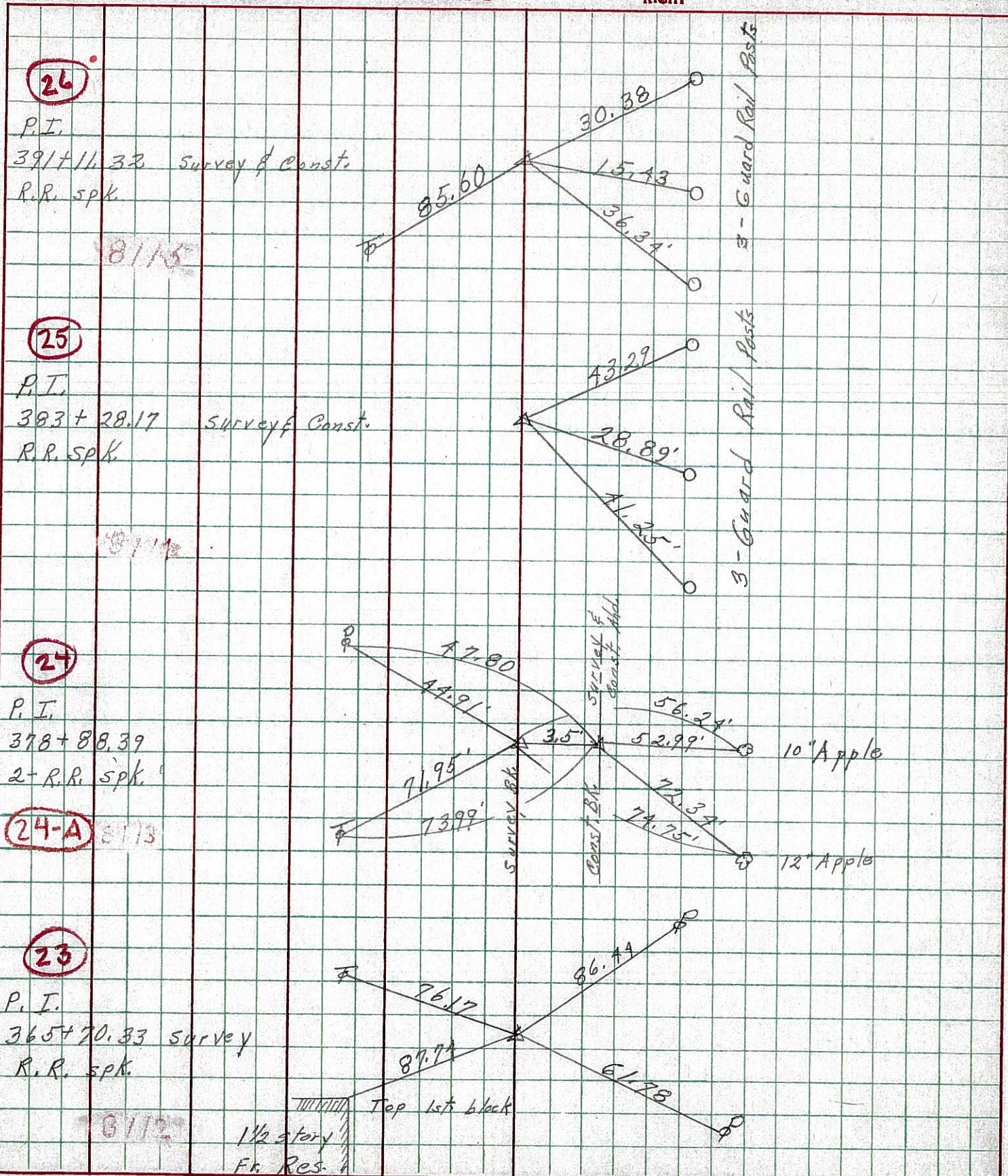
R. R. spk.

SET P.K. Nail & Shi.



PERSONNEL	TITLE	PERSONNEL	TITLE	COUNTY	DATE	WEATHER	TEMP.
Schneider		Potts		Seneca	10-17-68	Fair	75°
Mosser				S. R. 18			
Barbour				SEC. Fostoria to Bascom			
Redding							

DESCRIPTION Ties for Control Points



PERSONNEL TITLE PERSONNEL TITLE

COUNTY Seneca

DATE Apr. 23, '59

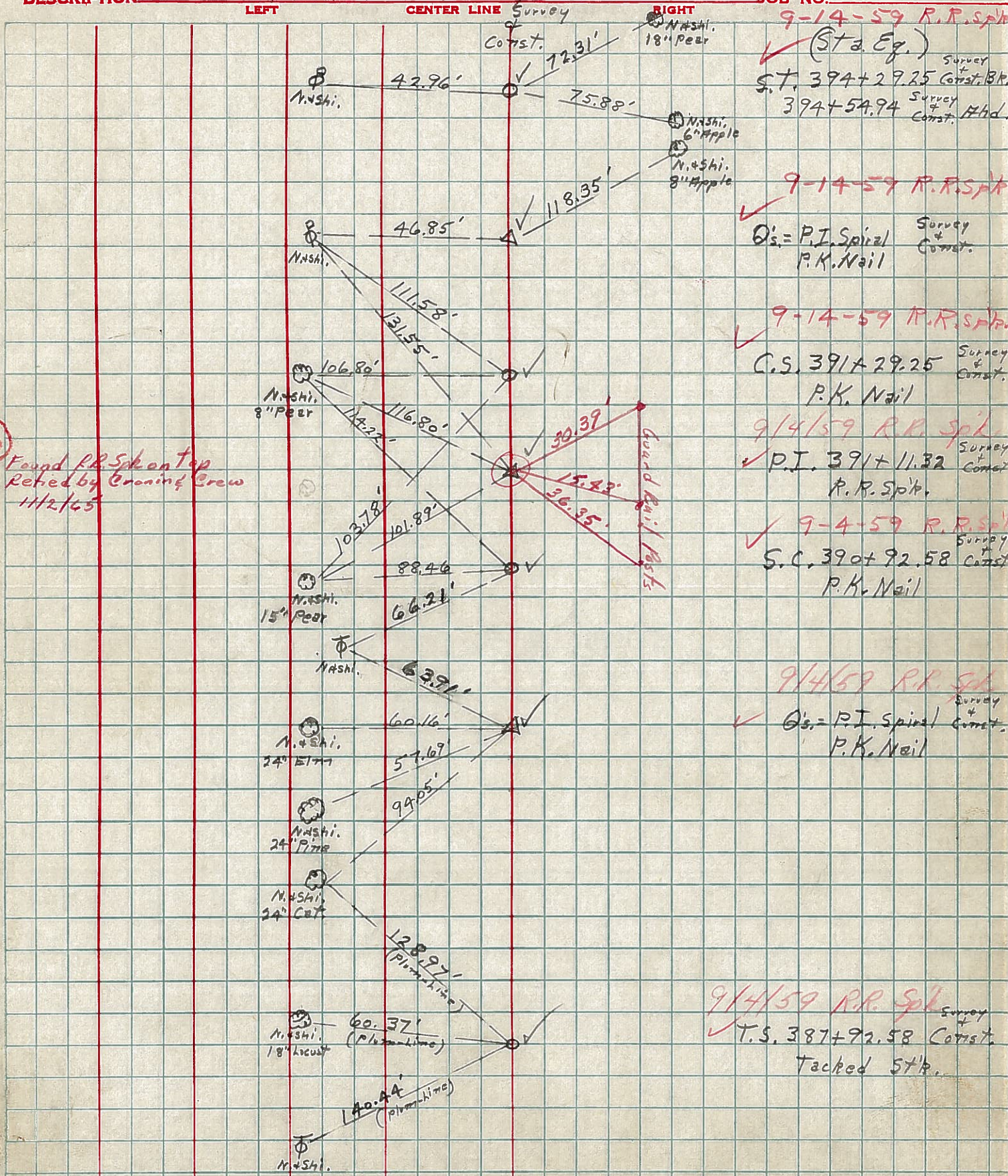
Fish  
Cromin  
Leemaster  
John K.

S. R. #18 Fosteria - Bascom Rd. WEATHER Clear

SEC. Sen-18 (179-8.60) TEMP. 50°

DESCRIPTION Control Point ties - Survey & Const.

JOB NO. 9-14-59 R.R. Spk



26

Found RR Sign on Top  
Replaced by Crossing Crew  
11/2/65

Guard Rail Posts