

O.D.O.T. DISTRICT 2 SURVEY OFFICE (USE ONLY)

PERSONNEL

REFERENCE NO. 27

SHEET 27 OF 48

NOTES CORDES
 H.C. HOMAN
 R.C. VAN DUSEN
CANTERBURY

DATE 6/28/01
 WEATHER SUNNY
 TEMP. 90°

ROUTE SR 18
 COUNTY SENECA
 TOWNSHIP HOPEWELL
 SECTION 18

DWG BY NIESE PID NO PID

T 2 N R 14 E

TYPE MONUMENT P.K./WASHER

ON SURFACE - ~~BELOW~~ ON

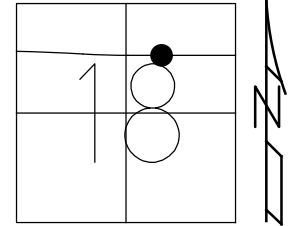
OFFSET 1.0' LT : ~~RT~~

15.7' TO RT EDGE PAVEMENT

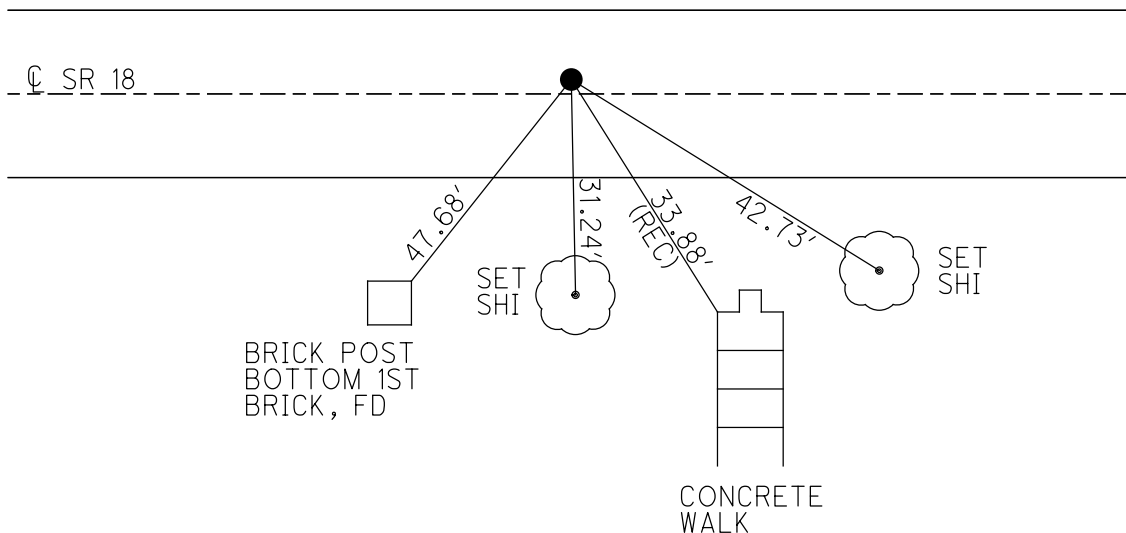
STATION: 419+69.88

HORIZ.DATUM: NAD83(2011) GEOID: 2012A

GRID: NORTHING: 535206.219 EASTING: 1751051.442



RECORD P.I.
 STA 407+80.90
 $\Delta = 3^\circ 27' 00''$ RT
 FD P.K./WASHER
 6/28/01, DCH
 SET P.K./WASHER
 8/1/01, SAH
 FD P.K./WASHER
 12/5/14, DCH
 REF27
 12/11/14, EBW
 FD P.K./WASHER
 REF27
 4/22/19
 FD 8/19/19, JFO



O.D.O.T. DISTRICT 2 SURVEY OFFICE

PERSONNEL _____

REFERENCE NO. 27

SHEET 8 OF 26

NOTES Cordes

H.C. Homan

R.C. VanDuser

Canterbury

DATE 6-28-01

WEATHER Sunny

TEMP. 90°

ROUTE 18

COUNTY Seneca

TOWNSHIP Hopewell

SECTION 18

T 2 N R 14 E

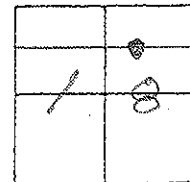
TYPE MONUMENT PK/W

ON SURFACE - ~~PK/W~~ Surface

LEFT - & PAV'T - ~~PK/W~~ 1"

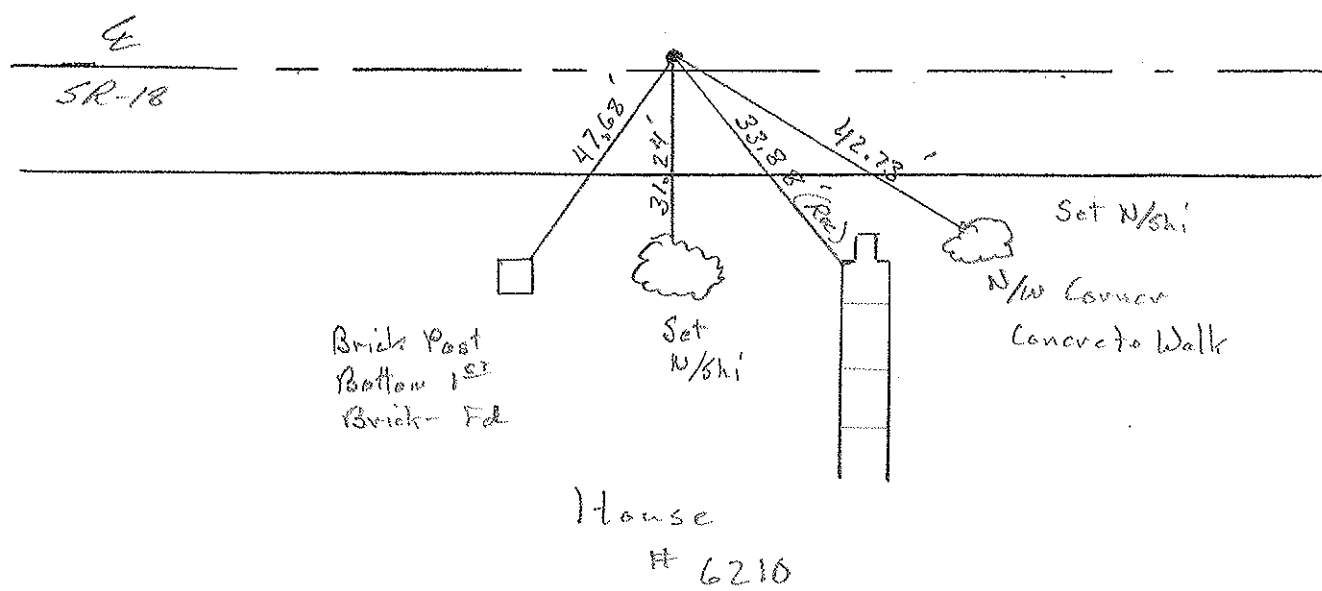
15.7 TO N. EDGE PAVEMENT

S.L.M. 420 + 46



Record:
Plan Sta 407+80.90
P.I.
Chenel

*Set PK/W
8-1-01
SAH*



O.D.O.T. DISTRICT 2 SURVEY OFFICE

PERSONNEL

REFERENCE NO. 27

SHEET 8 OF 27

NOTES CHENEY

H.C. BARBOUR

DATE 10-9-1991

ROUTE 18

R.C. RIPPLE

WEATHER Mostly Sunny

COUNTY SENECA

TEMP. 76°

TOWNSHIP HOPEWELL

SECTION 18

T 2 N R 14 E

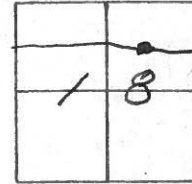
TYPE MONUMENT SET PL/WASHER

ON SURFACE - BELOW

LEFT - & PAV'T. - RIGHT 1'

5.17 TO N EDGE PAVEMENT

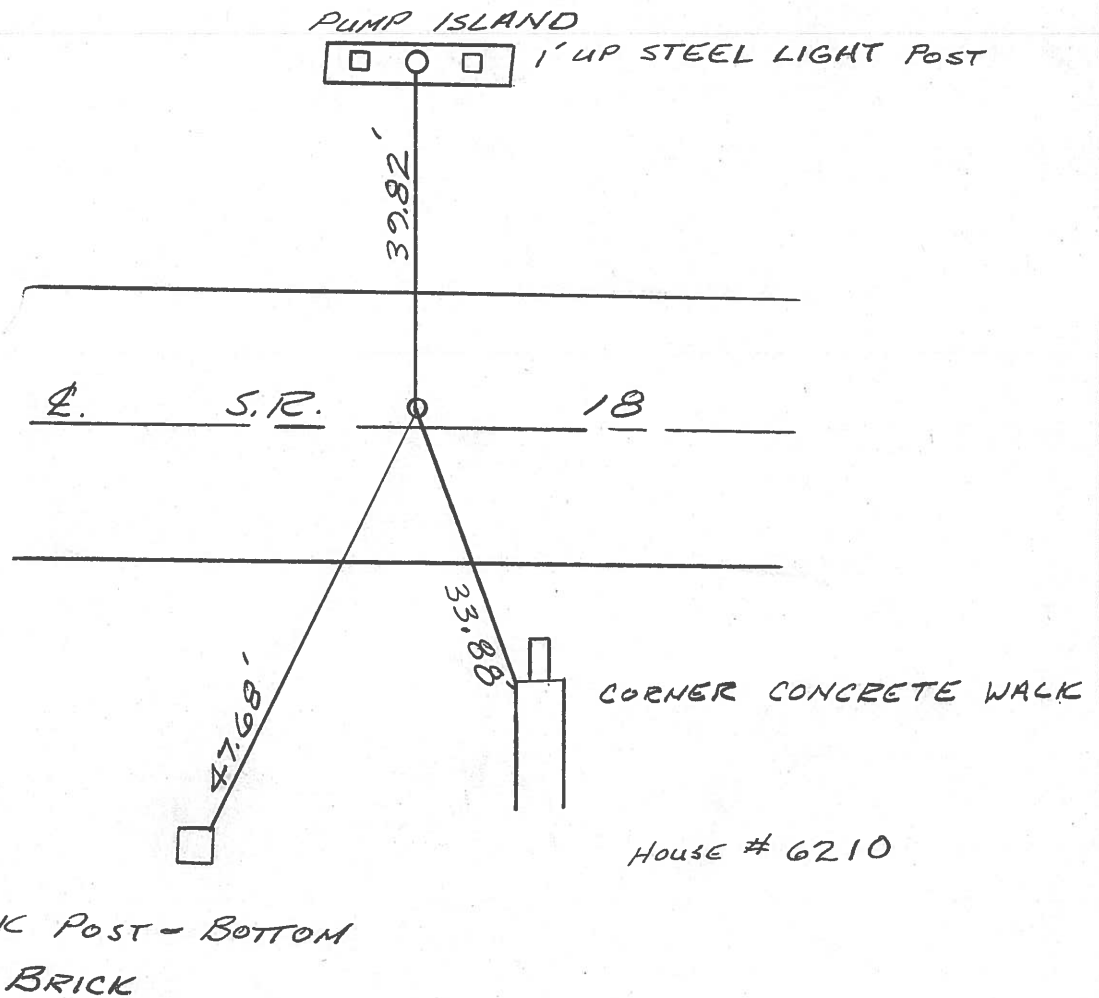
S.L.M. 420+03



P.I. - PREVIOUS MONUMENT:

PLAN STA = 407+80.90

P.K. / S.H.I.



OD.O.T. DISTRICT 2 SURVEY OFFICE

Sht. of

County Seneca S.R. # 18

Date OK-9-11-80-G.W.S.
5-16-80

Township Hope well

Weather Fair

Section 18

Temp. 60°

T2N, R14E

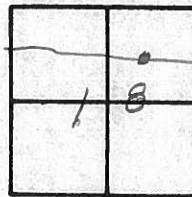
Personnel Schneider

Mosser

Barbour

Cronin

Ripple Geyman



(27)



S.R. # 18

1' up
light post

59.73'

59.62'

47.68'

P.I.

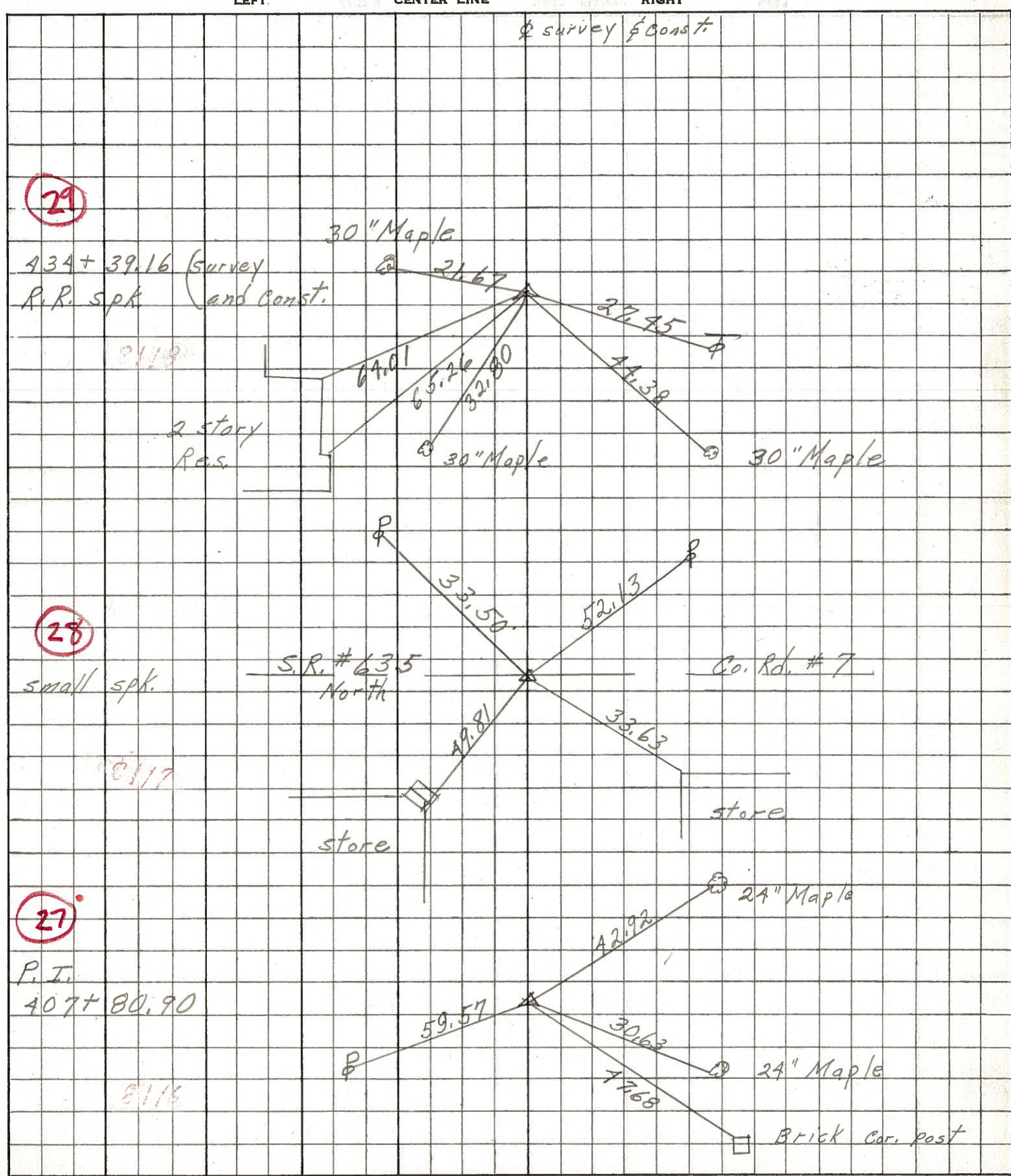
407 + 80.90

SET P.K. NAIL & SHI.

Brick Post
Bottom 1st. Brick

PERSONNEL	TITLE	PERSONNEL	TITLE	COUNTY	DATE	WEATHER	TEMP.
Schneider		Potts		Seneca	10-27-68	Cloudy	50°
Mosser				S. R. 18			
Barbour				SEC. Bascom to Tiffin			
Redding							

DESCRIPTION Ties for Control Points JOB NO. _____



PERSONNEL TITLE PERSONNEL TITLE

COUNTY Semola DATE Mar. 24, '59

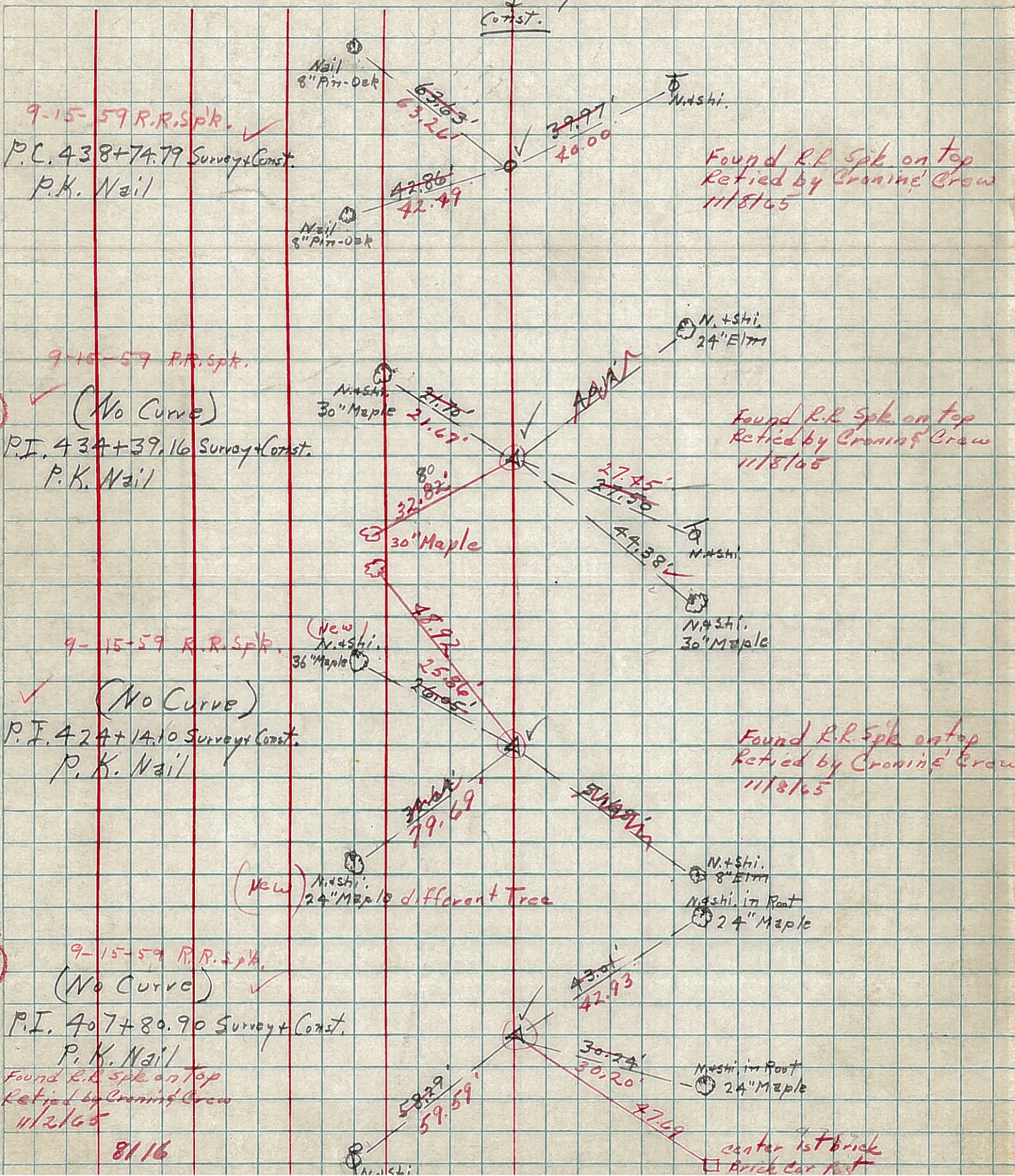
Asb
Cronin
Leemaster
John K.

S. R. #18 Fostoria-Bascom Rd WEATHER Clear

SEC. Sem-18(1.79-8.60) TEMP. 50°

DESCRIPTION Control Point Ties - Survey & Const. JOB NO. _____

LEFT CENTER LINE - Survey RIGHT



29

27

8116