

O.D.O.T. DISTRICT 2 SURVEY OFFICE (USE ONLY)

PERSONNEL

REFERENCE NO. 28

SHEET 28 OF 48

NOTES RHOADES DATE 12/19/18

H.C. O'DONNELL WEATHER FAIR

R.C. RHOADES TEMP. 35°

ROUTE SR 18

COUNTY SENECA

TOWNSHIP HOPEWELL

SECTION 18

DWG BY RHOADES PID 92128

T 2 N R 14 E

TYPE MONUMENT DRILLH

ON SURFACE - ~~BELOW~~ ON

OFFSET  $\bar{C}$  PAVEMENT 1' ~~LT~~ : RT  
- TO - EDGE PAVEMENT

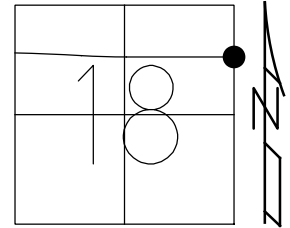
STATION: 431+78

HORIZ.DATUM: NAD83(2011)

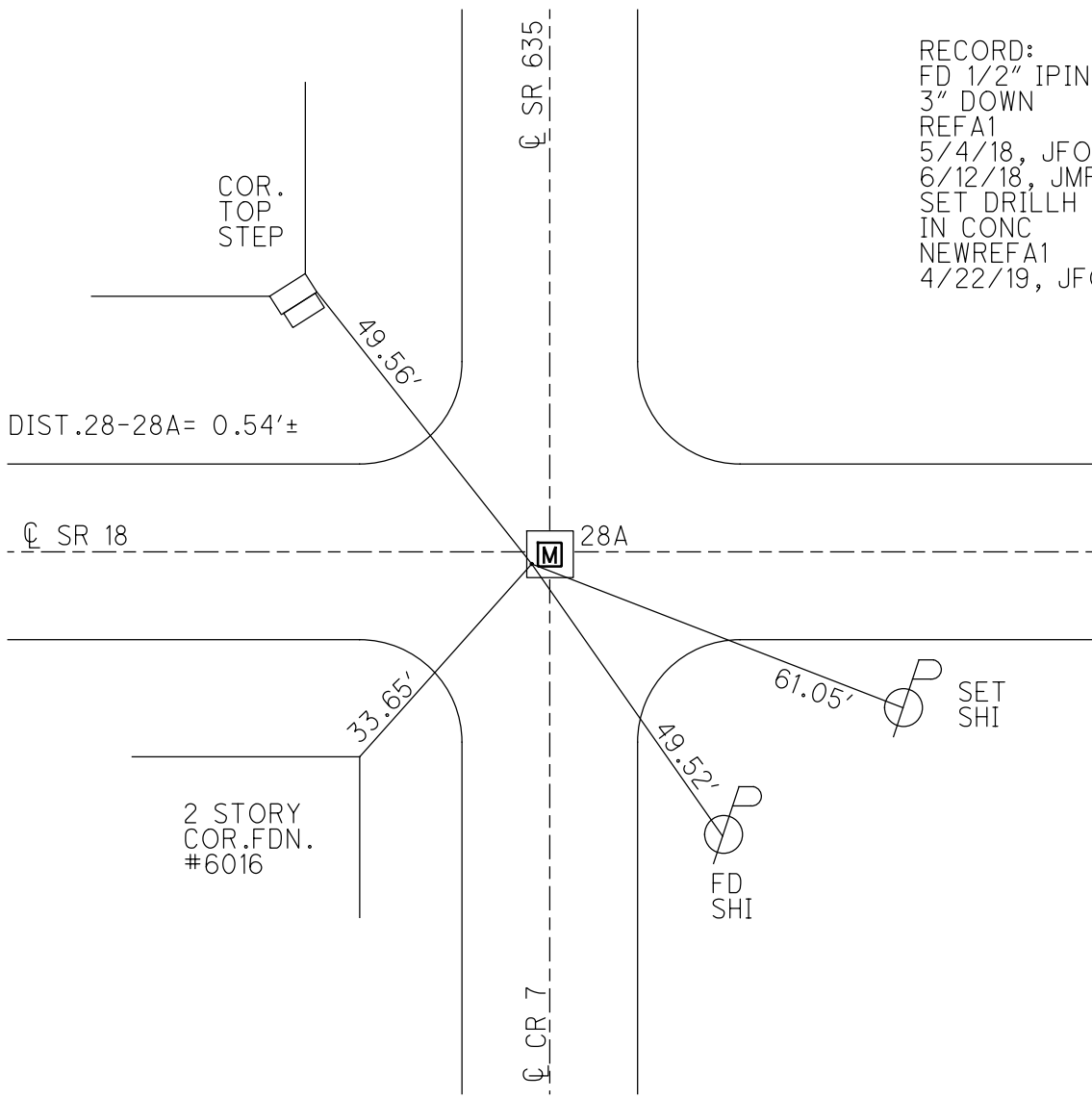
GEOID: 2012A

GRID: NORTHING: 535119.000

EASTING: 1752182.656



RECORD:  
 FD 1/2" IPIN  
 3" DOWN  
 REFA1  
 5/4/18, JFO  
 6/12/18, JMR  
 SET DRILLH  
 IN CONC  
 NEWREFA1  
 4/22/19, JFO



# O.D.O.T. DISTRICT 2 SURVEY OFFICE

PERSONNEL \_\_\_\_\_

REFERENCE NO. 28

SHEET 9 OF 26

NOTES Condos

H.C. Homan

DATE 6-28-01

ROUTE 18

R.C. Vandusen

WEATHER Sunny

COUNTY Seneca

Cataraugus P

TEMP. 90°

TOWNSHIP Hopewell

SECTION 17-18

T 2 N R 14 E

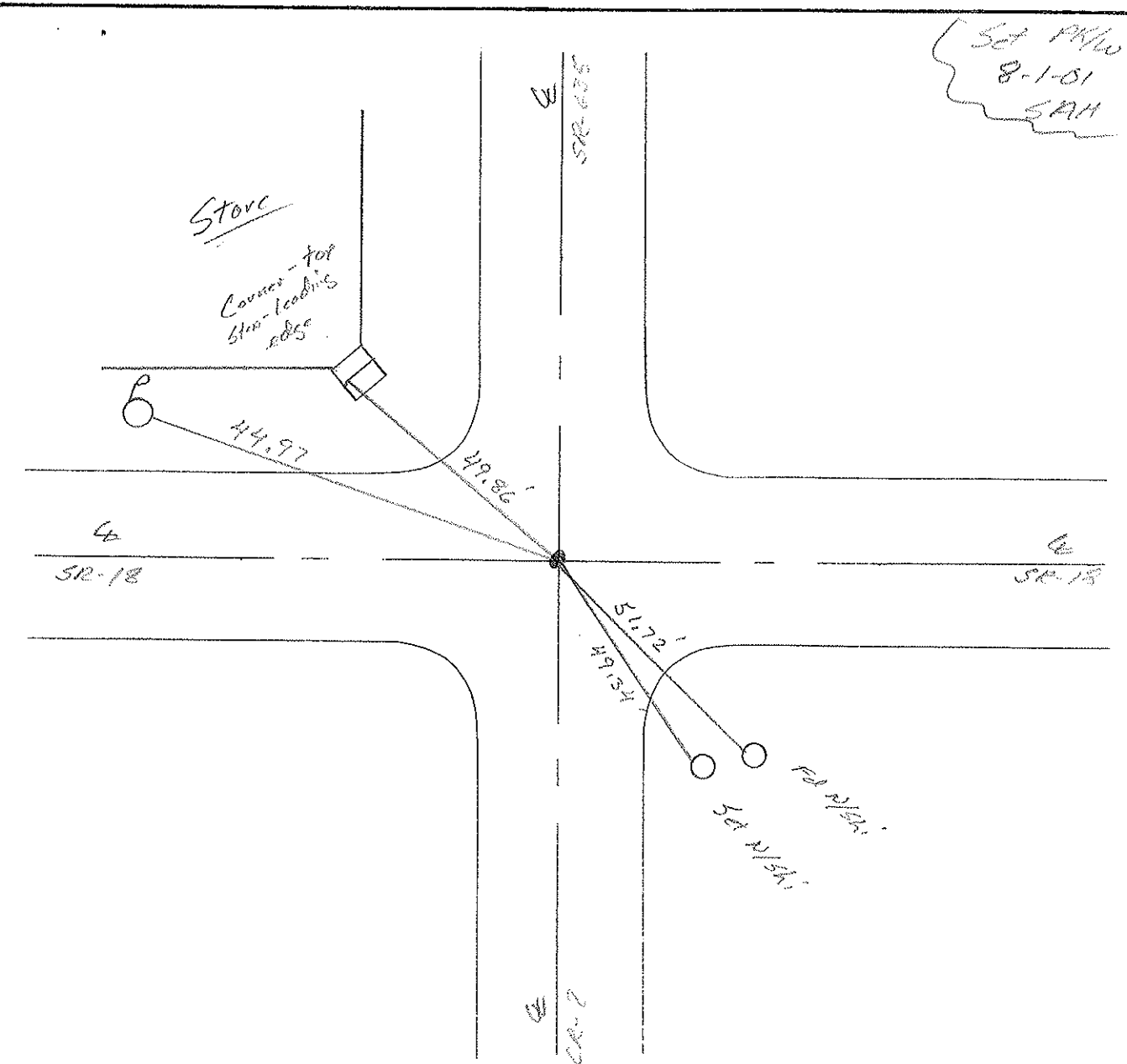
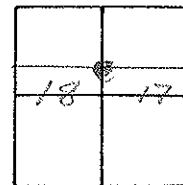
TYPE MONUMENT PK/w

ON SURFACE - ~~BELOW~~ Surface

LEFT - ☉ PAV'T. - RIGHT \_\_\_\_\_

TO \_\_\_\_\_ EDGE PAVEMENT

S.L.M. 431+78



# O.D.O.T. DISTRICT 2 SURVEY OFFICE

PERSONNEL

REFERENCE NO. 28

SHEET 9 OF 27

NOTES CHENEY

H.C. RIPPLE

DATE 11-5-1991

ROUTE 18

R.C. BARBOUR

WEATHER PARTLY CLOUDY

COUNTY SENECA

GEYMAN

TEMP. 25°

TOWNSHIP HOPEWELL

SECTION 17 & 18

T2N R14E

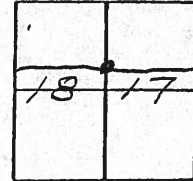
TYPE MONUMENT SET PK/WASHER

ON SURFACE - ~~BELOW~~

LEFT - PAV'T. - RIGHT SE#18 & SK#635

TO EDGE PAVEMENT

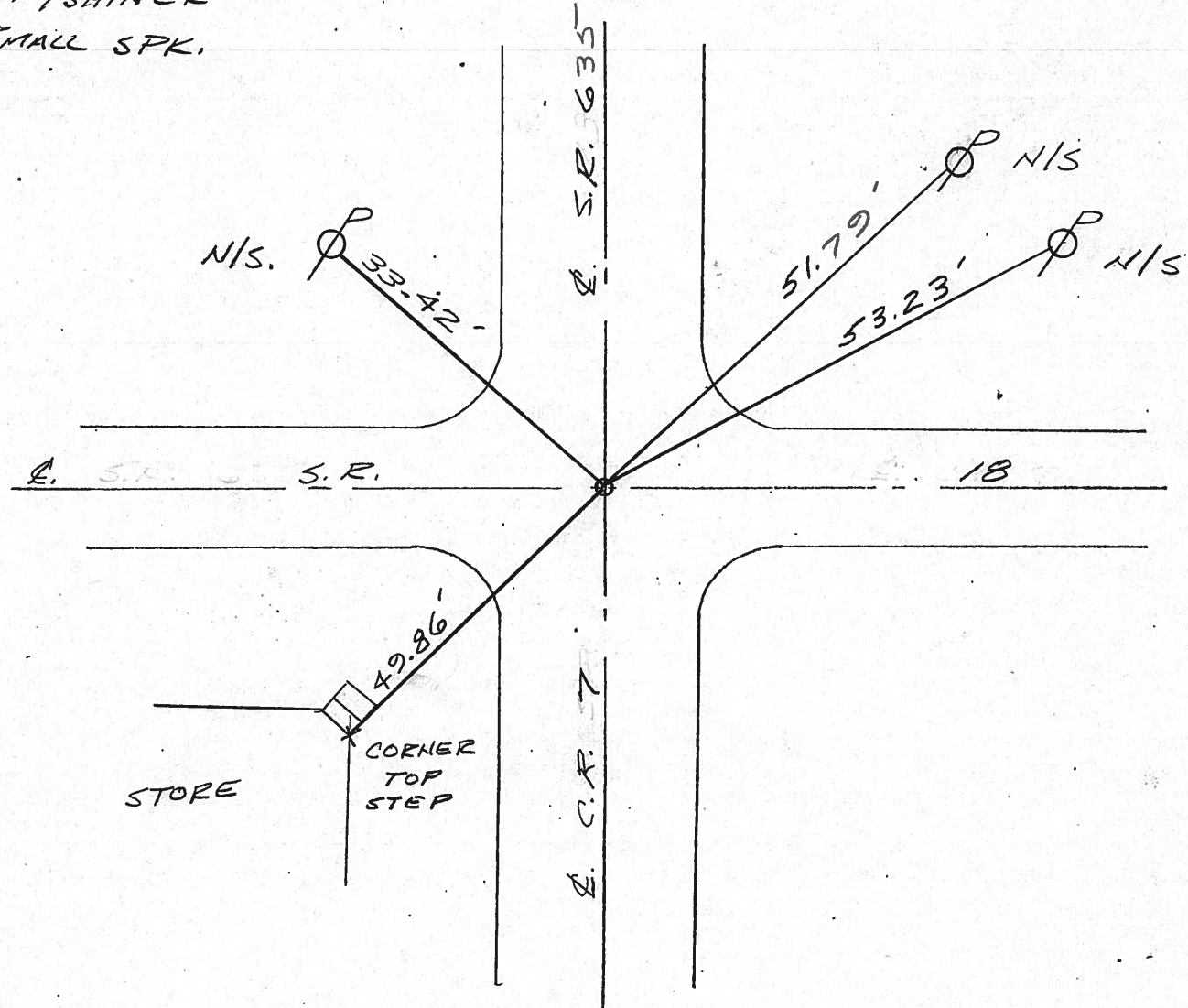
S.L.M. 431+38



PREVIOUS MONUMENTS:

PK/SHINER

SMALL SPK.



OD.O.T. DISTRICT 2 SURVEY OFFICE

Sht.      of     

90

County Seneca S.R. # 18

Date OK-9-11-80 - G.W.S.  
5-16-80

Township Hope well

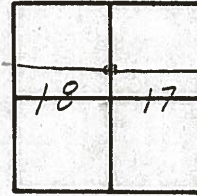
Weather Fair

Section 18 & 17

Temp. 60°

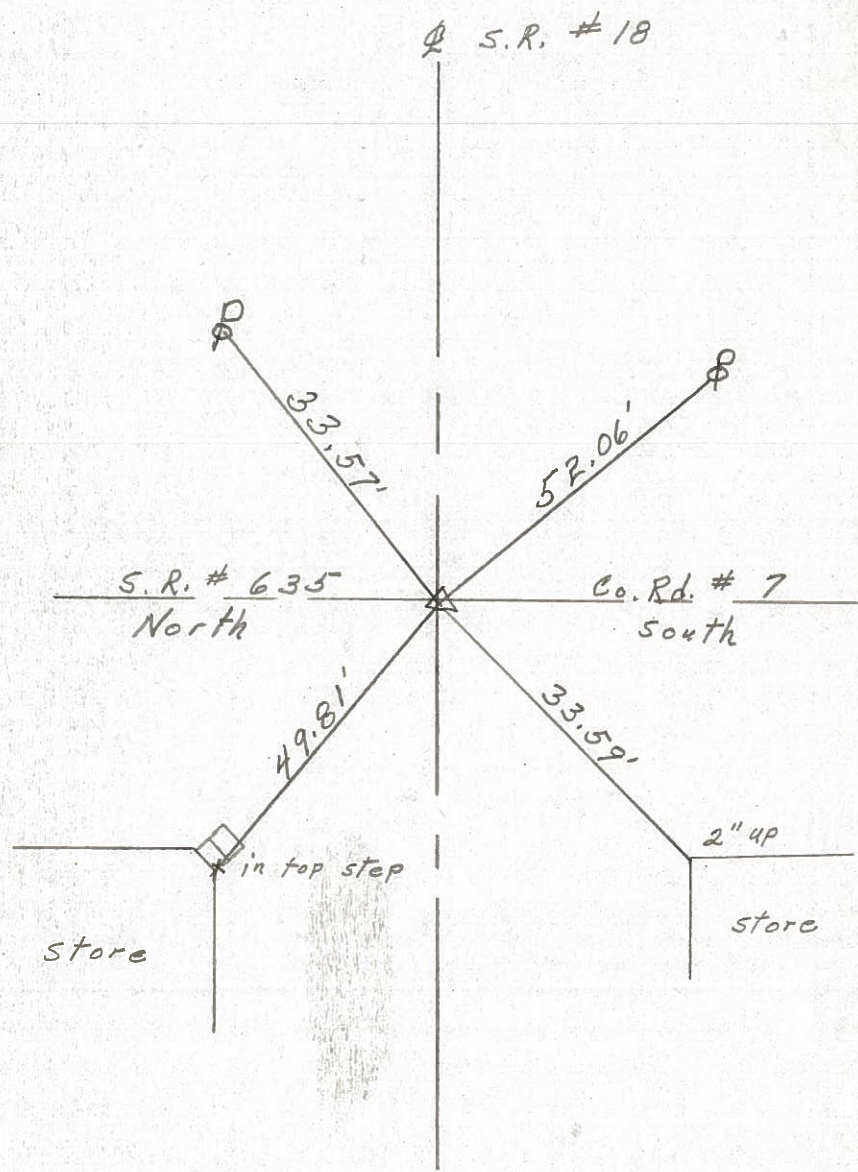
T2N, R14E N

Personnel Schneider  
Mosser  
Barbour  
Gronin  
Ripple Geyman



28

P. I.  
Small spk.  
SET P.K. Nail & Shi.



PERSONNEL	TITLE	PERSONNEL	TITLE	COUNTY	DATE
Schneider		Potts		Seneca	10-21-68
Mosser				S. R. 18	WEATHER Cloudy
Barbour				SEC. Bascom to Tiffin	TEMP. 50°
Redding					

DESCRIPTION Ties for Control Points JOB NO. \_\_\_\_\_

