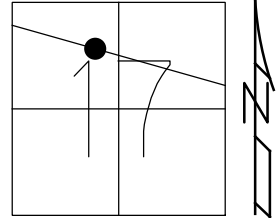


O.D.O.T. DISTRICT 2 SURVEY OFFICE (USE ONLY)

PERSONNEL _____ REFERENCE NO. 30 SHEET 32 OF 48
 NOTES NIESE DATE 11/6/23 ROUTE SR 18
 H.C. AUBLE WEATHER CLOUDY COUNTY SENECA
 R.C. RHOADES TEMP. 58° TOWNSHIP HOPEWELL
 SECTION 17
 DWG BY RHOADES PID R/W T 2 N R 14 E

TYPE MONUMENT P.K.NAIL
 ON SURFACE - ~~BELOW~~ ON
 OFFSET 2.0' ~~±~~ : RT
14.0' TO RT EDGE PAVEMENT
 STATION: 454+71



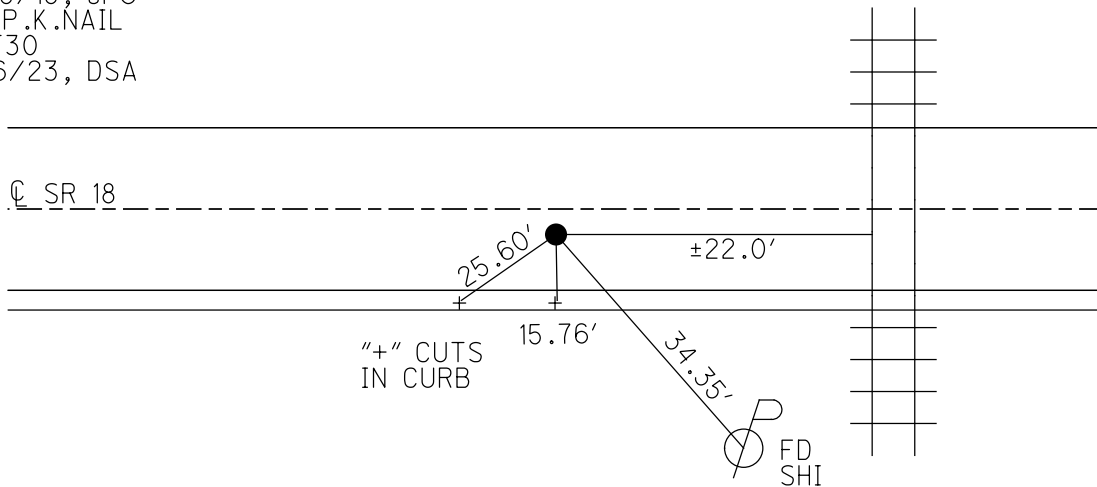
HORZ.DATUM: NAD83(2011) GEOID: 2012A
 GRID: NORTHING: 534912.472 EASTING: 1754473.286

RECORD:
 STA 442+14.82
 $\Delta = 1^{\circ}16'00''$ LT
 PREV. MONUMENTS:
 P.K./WASHER
 R.R.SPIKE
 FD P.K./WASHER
 6/4/01, BVD
 SET P.K./WASHER
 8/1/01, SAH
 FD P.K./WASHER
 REF30
 4/23/19
 8/19/19, JFO
 FD P.K.NAIL
 REF30
 11/6/23, DSA

SENECA LPD:
 N: 303435.170
 E: 129060.638

RES#5571

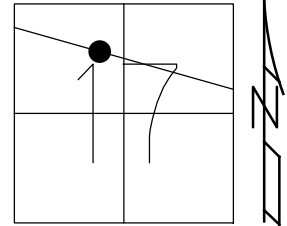
BALTIMORE
 OHIO
 RAILROAD



O.D.O.T. DISTRICT 2 SURVEY OFFICE (USE ONLY)

PERSONNEL _____ REFERENCE NO. 30 SHEET 32 OF 48
 NOTES VAN DUSEN DATE 6/4/01 ROUTE SR 18
 H.C. ROUSOS WEATHER SUNNY COUNTY SENECA
 R.C. BROWN TEMP. 60° TOWNSHIP HOPEWELL
 SECTION 17
 DWG BY NIESE PID NO PID T 2 N R 14 E

TYPE MONUMENT P.K./WASHER
 ON SURFACE - ~~BELOW~~ ON
 OFFSET 2.0' RT : RT
14.0' TO RT EDGE PAVEMENT
 STATION: 454+71

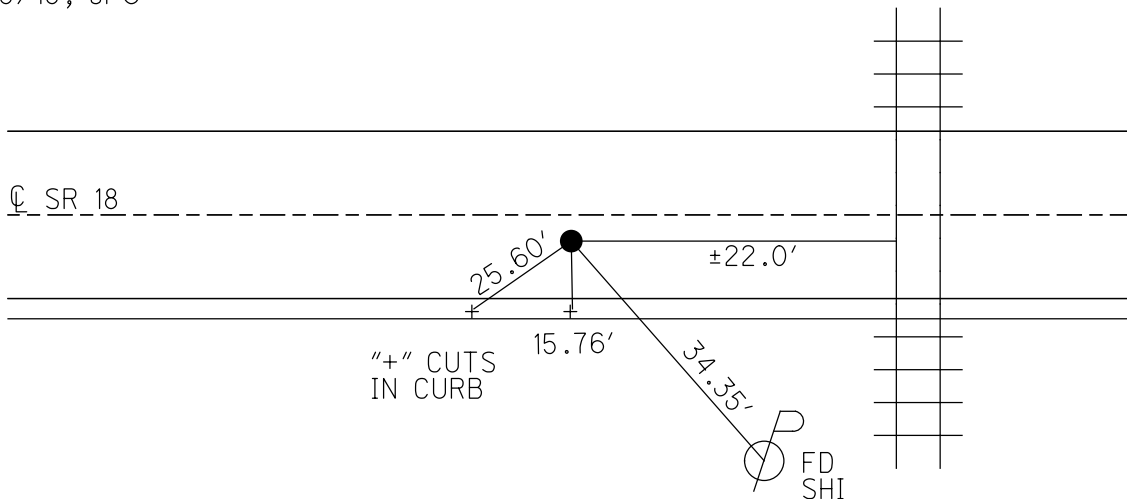


HORZ. DATUM: NAD83(2011) GEOID: 2012A
 GRID: NORTHING: 534912.472 EASTING: 1754473.286

RECORD:
 STA 442+14.82
 $\Delta = 1^{\circ}16' 00''$ LT
 PREV. MONUMENTS:
 P.K./WASHER
 R.R.SPIKE
 FD P.K./WASHER
 6/4/01, BVD
 SET P.K./WASHER
 8/1/01, SAH
 FD P.K./WASHER
 REF30
 4/23/19
 8/19/19, JFO

RES#5571

BALTIMORE
 OHIO
 RAILROAD



O.D.O.T. DISTRICT 2 SURVEY OFFICE

PERSONNEL

REFERENCE NO. 30

SHEET 11 OF 26

NOTES Van Dusen

H.C. Rousos

R.C. Brown

DATE 6-4-01

WEATHER Sunny

TEMP. 60°F

ROUTE 18

COUNTY Scheneca

TOWNSHIP Hopewell

SECTION 17

T 2 N R 14 E

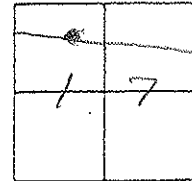
TYPE MONUMENT PK/w

ON SURFACE - ~~BELOW~~ surface

~~LEFT~~ PAV'T. - RIGHT 2' Rt.

14' TO 51' EDGE PAVEMENT

S.L.M. 454+71



Record:

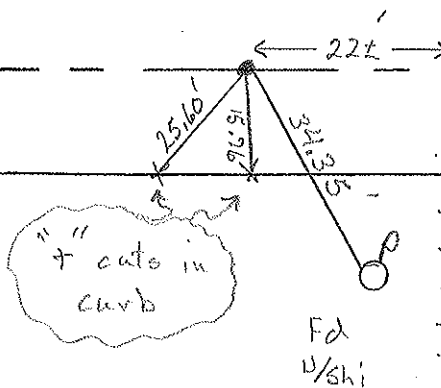
Plan Sta - 442 + 14.82
 Prev. Mon. - PK/w s RR Spk.

Set PK/w
 8-1-01
 SAH

Res # 5571

Balt. & Ohio
 R.R.

SR-18



O.D.O.T. DISTRICT 2 SURVEY OFFICE

PERSONNEL

REFERENCE NO. 30

SHEET 11 OF 27

NOTES CHEHEY

H.C. RIDDLE

DATE 11-5-1991

ROUTE 18

R.C. BARBOUR

WEATHER PARTLY CLOUDY

COUNTY SENECA

GEYMAN

TEMP. 25°

TOWNSHIP HOMERELL

SECTION 17

T 2 N R 14 E

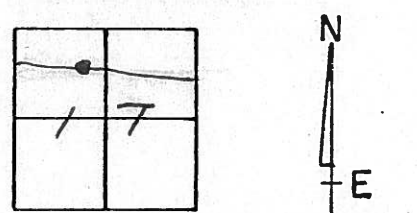
TYPE MONUMENT SET PK/WASHER

ON SURFACE - BELOW

~~LEFT~~ - PAV'T. - RIGHT 2'

14' TO S EDGE PAVEMENT

S.L.M. 454+71

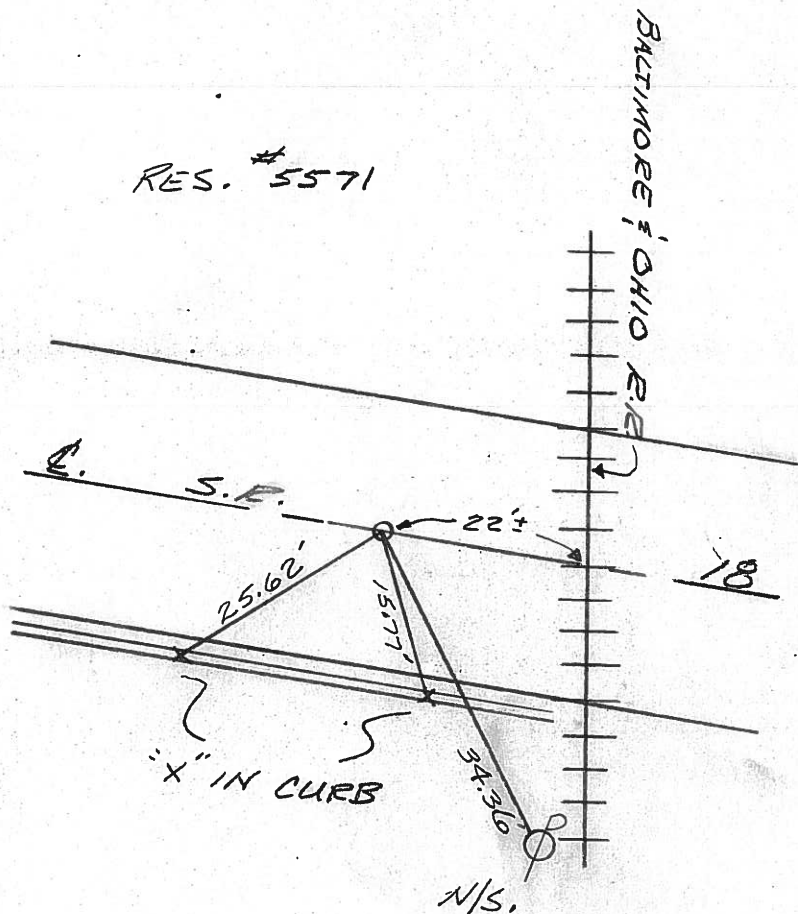


PREVIOUS MONUMENTS:

PK/SHINER

R.R. SPK.

PLAN STA = 442 + 1482



Q.D.O.T. DISTRICT 2 SURVEY OFFICE

Sht. ___ of ___

County Seneca S.R. # 18

Township Hope well

Section 17

T2N, R14E

Personnel Schneider

Mosser

Barbour

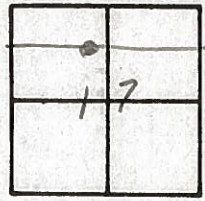
Gronin

Ripple Geyman

Date OK-9-11-80 G.W.S,
5-16-80

Weather Fair

Temp. 60



30

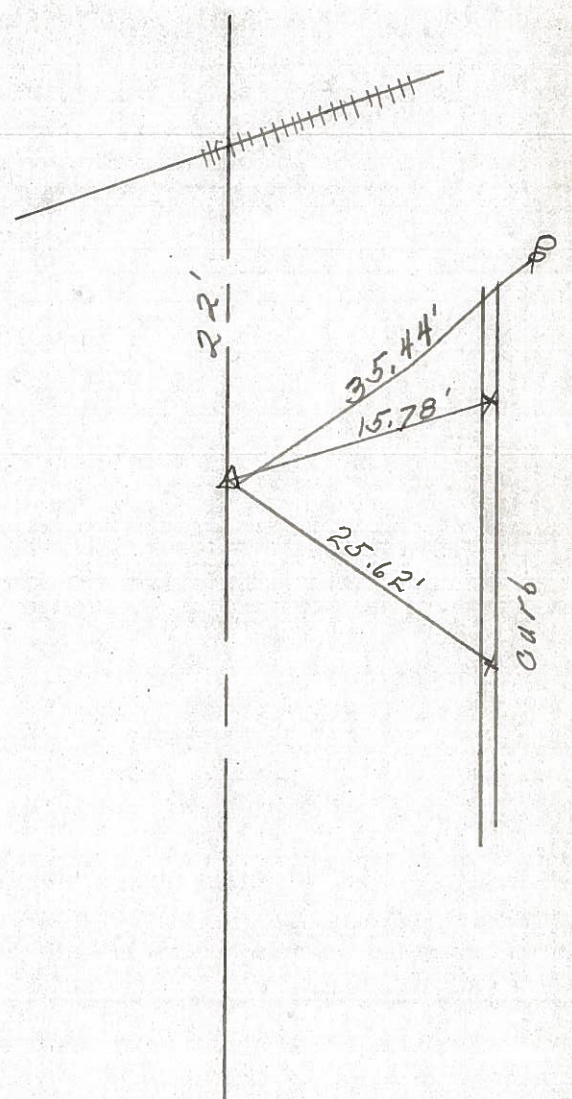


P. I.

442 + 14.82

R R. SPK.

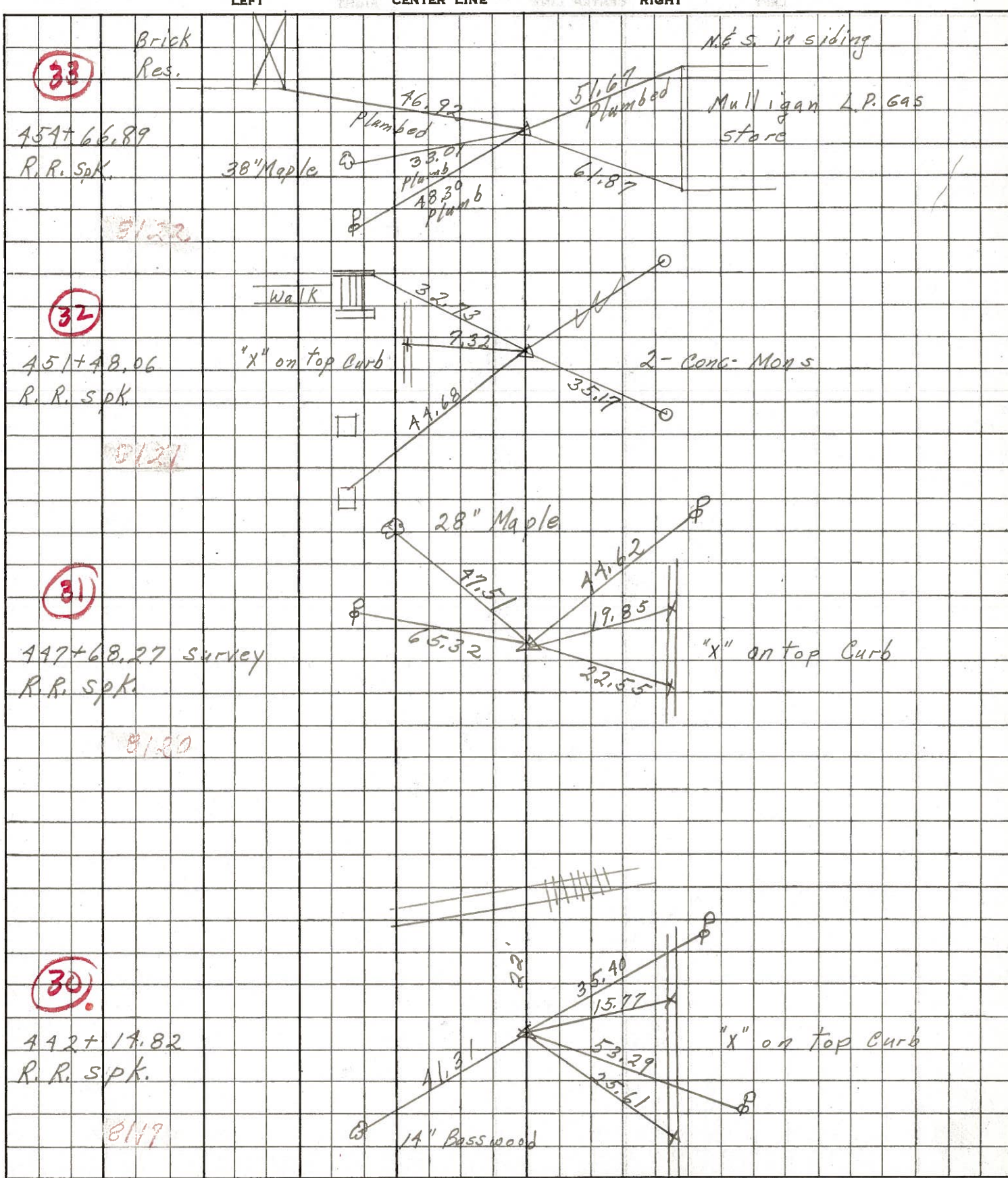
SET P.K. Nail & Shi.



PERSONNEL	TITLE	PERSONNEL	TITLE
Schnéider		Potts	
Mosser			
Barbour			
Redding			

COUNTY Seneca DATE 10-27-68
 S. R. 1B WEATHER Cloudy
 SEC. Bascom to Tiffin TEMP. 50°

DESCRIPTION Ties for Control Points JOB NO. _____



PERSONNEL TITLE PERSONNEL TITLE

COUNTY Seneca

DATE Mar. 25, '59

Hsh
Crosin
Leemaster,
John K.

S. R. #18 Fosteris-Bascorn Rd.

WEATHER Clear

SEC. Sen-18 (1.79-8.60)

TEMP. 50°

DESCRIPTION Control Point Ties - Survey + Const.

JOB NO.

LEFT CENTER LINE SURVEY RIGHT

32

9-15-59 R.R. Spk.
(No Curve)

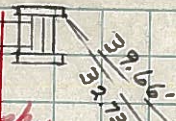
P.I. 451+48.06 Survey

P.K. Nail

Survey Tang.

Found R.R. Spk. on top Retied by Cronin's Crew 11/8/65

S.W. Cor. East Post
WALK



Const.

G.R. Post

C.C. Rail Post

G.R. Post

9-15-59 R.R. Spk. Const. Curve

P.C. 451+96.69 Plan Const.

P.C. 451+46.69 Const.

P.K. Nail

31

9-15-59 R.R. Spk.
(No Curve)

P.I. 447+68.27 Survey

P.K. Nail

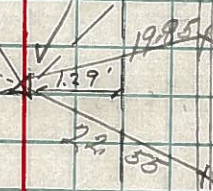
Found R.R. Spk on top Retied by Cronin's Crew 11/8/65

(Nishi. New)

Nishi 28" Maple

Nishi 6" Maple

Nishi.



Const. Tang.

Nishi 6" Spruce

Survey Tang.

Nishi 36" Maple

32.44'

2.79'

26.75'

Nishi.

9-15-59 R.R. Spk. P.I. 445+54.79 Const.

P.K. Nail

30

9-15-59 R.R. Spk.
(No Curve)

P.I. 442+14.82 Survey

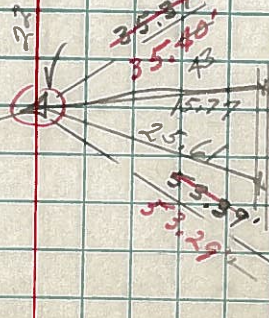
P.K. Nail

(New) Nishi 8" Bass Wood 1 1/4"

41.64', 41.22', 31

R.R.

Nishi.



9-15-59 R.R. Spk. P.I. 442+14.82 Const.

P.K. Nail

Found R.R. Spk. on top Retied by Cronin's Crew 11/8/65

Nishi.