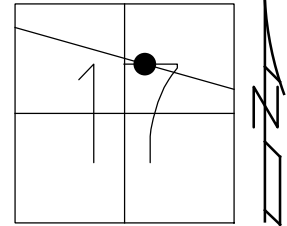


O.D.O.T. DISTRICT 2 SURVEY OFFICE (USE ONLY)

PERSONNEL \_\_\_\_\_ REFERENCE NO. 32 SHEET 34 OF 48  
 NOTES VAN DUSEN DATE 6/04/01 ROUTE SR 18  
 H.C. ROUSOS WEATHER SUNNY COUNTY SENECA  
 R.C. BROWN TEMP. 60° TOWNSHIP HOPEWELL  
 SECTION 17  
 DWG BY NIESE PID NO PID T 2 N R 14 E

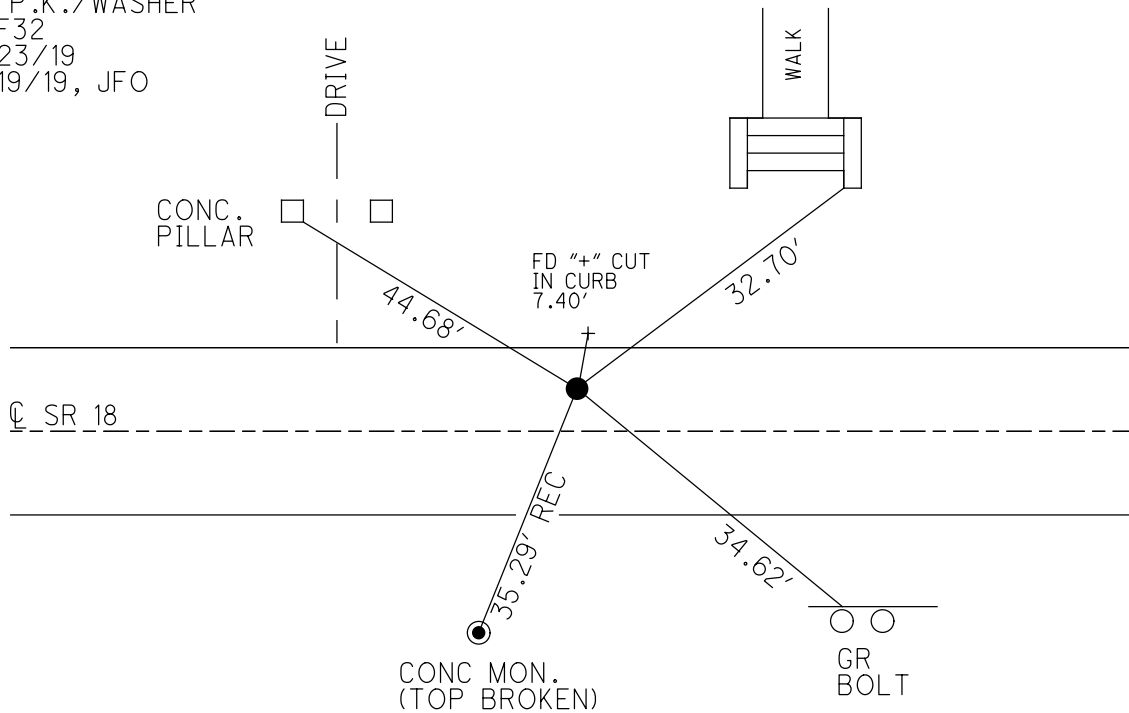
TYPE MONUMENT P.K./WASHER  
 ON SURFACE - ~~BELOW~~ ON  
 OFFSET 8.0' LT : ~~RT~~  
7.0' TO LT EDGE PAVEMENT  
 STATION: 464+05



HORZ. DATUM: NAD83(2011) GEOID: 2012A  
 GRID: NORTHING: 534840.602 EASTING: 1755403.806

RECORD:  
 STA. 451+48.06  
 PREV. MONUMENTS:  
 P.K./SHINER  
 R.R. SPIKE  
 FD P.K./WASHER  
 6/4/01, BVD  
 SET P.K./WASHER  
 8/1/01, SAH  
 FD P.K./WASHER  
 REF32  
 4/23/19  
 8/19/19, JFO

RES#5385



O.D.O.T. DISTRICT 2 SURVEY OFFICE

PERSONNEL

REFERENCE NO. 32

SHEET 13 OF 26

NOTES VAN DUSEN

H.C. Rousos

R.C. ADAM B.

DATE 6-04-01

WEATHER SUNNY

TEMP. +60° F

ROUTE 18

COUNTY SENECA

TOWNSHIP HOPEWELL

SECTION 17

T2 NR 14 E

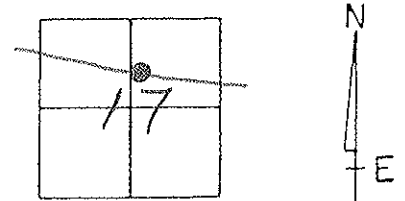
TYPE MONUMENT PK&WASHER

ON SURFACE - BELOW YES

LEFT - & PAV'T. - RIGHT 8.0'

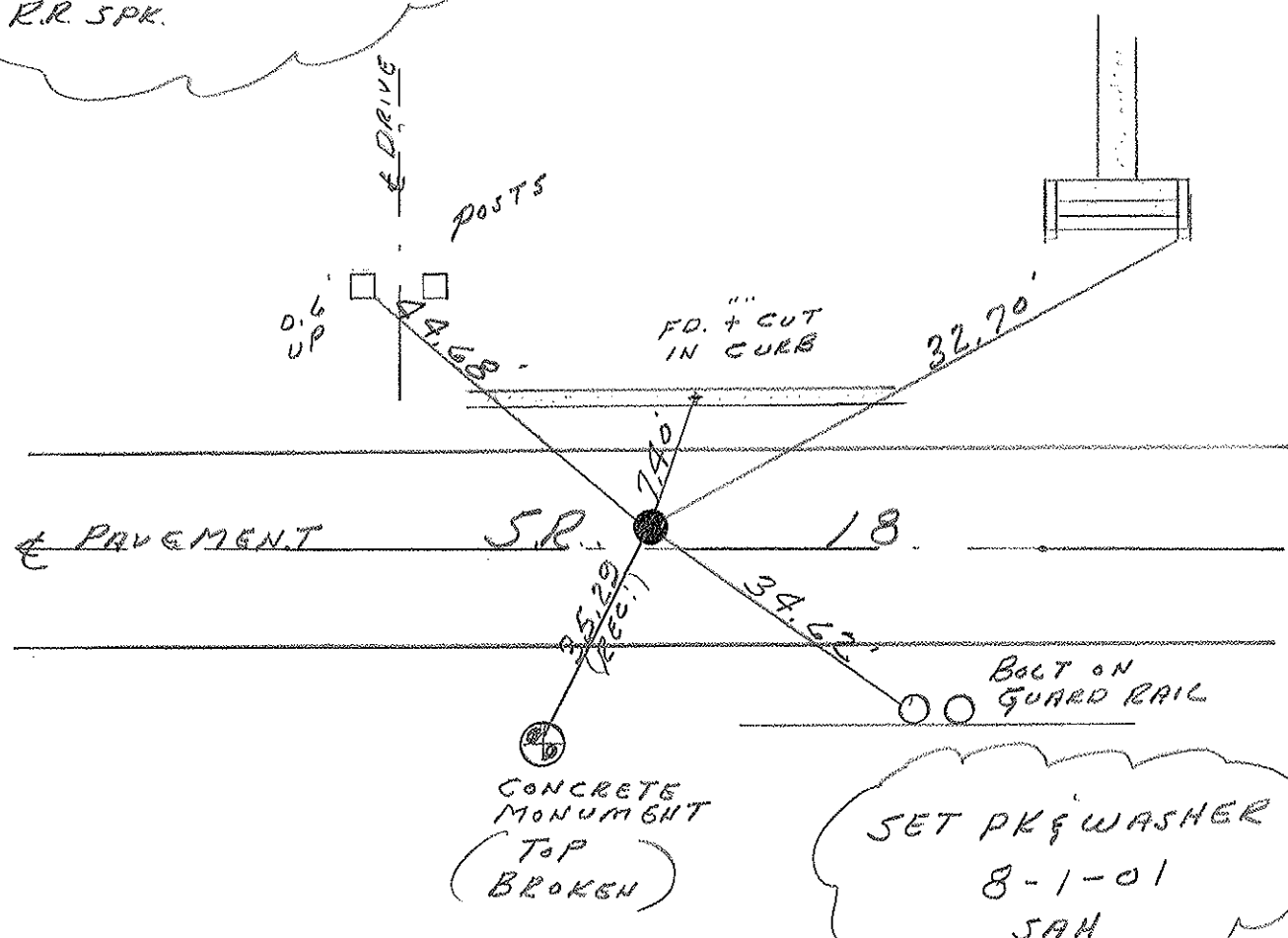
7' TO LT. EDGE PAVEMENT

S.L.M. 464+05



PREVIOUS MONUMENTS:  
PK&SHINGR REG;  
R.R. SPK.

PLAN STA. 451+48.06



# O.D.O.T. DISTRICT 2 SURVEY OFFICE

PERSONNEL

REFERENCE NO. 32

SHEET 13 OF 27

NOTES CHENEY

H.C. RIPPLE

R.C. SARBOUR

GEYMAN

DATE 11-5-1991

WEATHER PARTLY CLOUDY

TEMP. \_\_\_\_\_

ROUTE 18

COUNTY SENECA

TOWNSHIP HOPEWELL

SECTION 17

T2N R14E

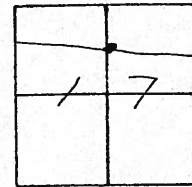
TYPE MONUMENT SET PK/WASHER

ON SURFACE - ~~BELOW~~

LEFT - & PAV'T. - RIGHT 8'

7' TO N. EDGE PAVEMENT

S.L.M. 463+75

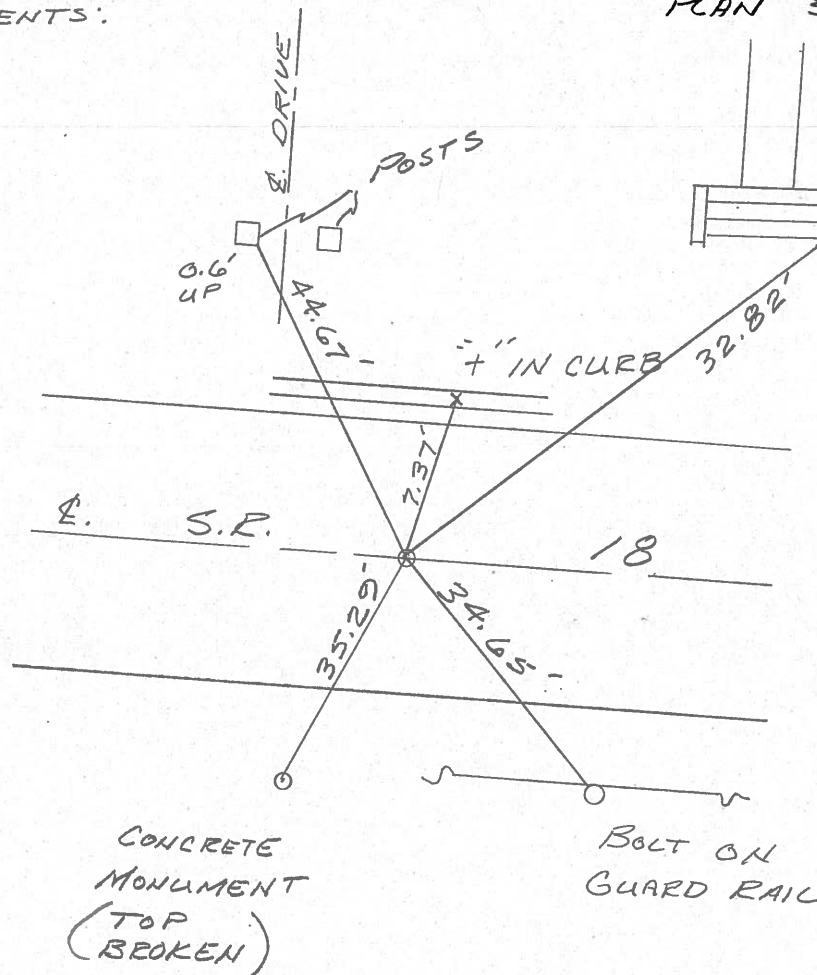


PREVIOUS MONUMENTS:

PK/SHINER

R.R. SPK.

PLAN STA: 451+48.06



Q.D.O.T. DISTRICT 2 SURVEY OFFICE

Sht. \_\_\_ of \_\_\_

County Seneca S.R. #18

Date OK-9-12-80 G.W.S.  
5-16-80

Township Horsewell

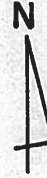
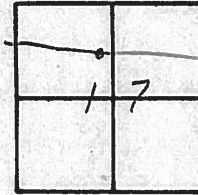
Weather Fair

Section 17

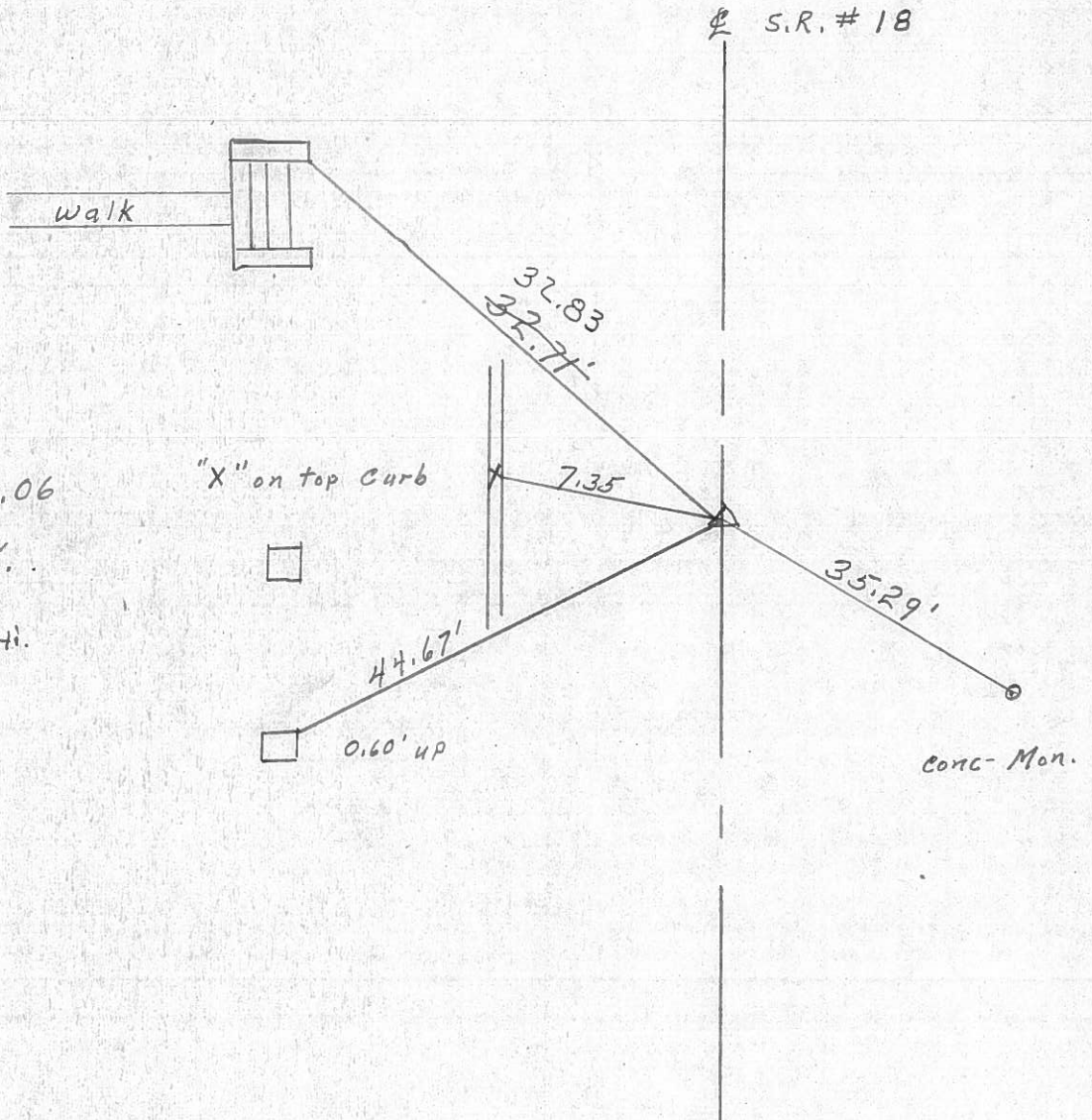
Temp. 60°

T2N, R14E

Personnel Schneider  
Mosser  
Barbour  
Cronin  
Ripple Geyman

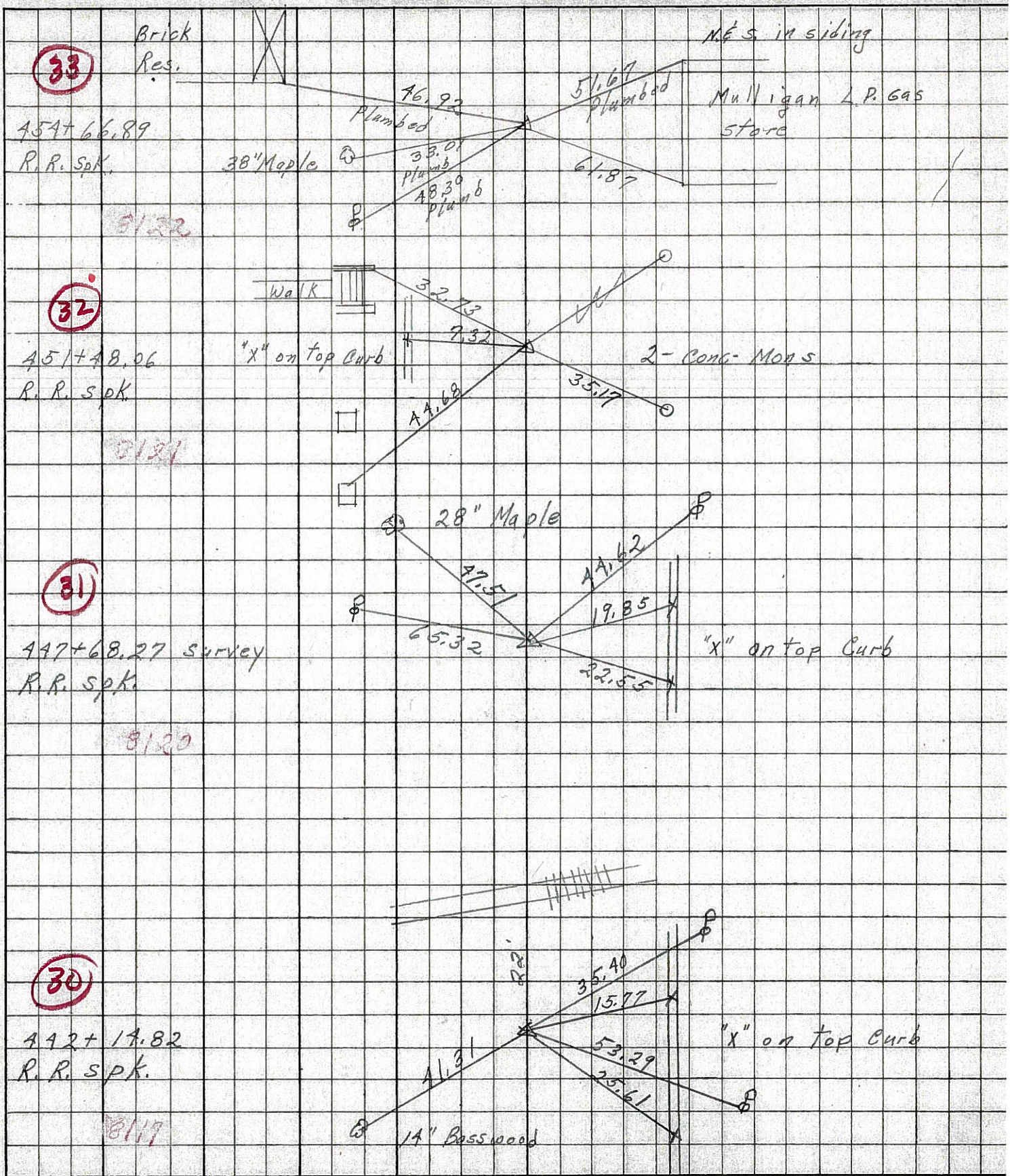


32



PERSONNEL	TITLE	PERSONNEL	TITLE	COUNTY	DATE
Schneider		Potts		Seneca	10-29-68
Mosser				S. R. 1B	WEATHER Cloudy
Barbour				SEC. Bascom to Tiffin	TEMP. 50°
Redding					

DESCRIPTION Ties for Control Points JOB NO. \_\_\_\_\_



PERSONNEL TITLE PERSONNEL TITLE

COUNTY Seneca

DATE Mar. 25, '59

Fish  
Cronin  
Leemaster  
John K.

S. R. #18 Fosteria-Bascom Rd.

WEATHER Clear

SEC. Sen-18 (1.79-860)

TEMP. 50°

DESCRIPTION Control Point ties - Survey + Const.

JOB NO.

LEFT CENTER LINE RIGHT

32

9-15-59 R.R. Spk.

(No Curve)

P.I. 451+48.06 Survey

P.K. Nail

Survey Tang.

Found R.R. Spk. on top Retied by Cronin's Crew 11/8/65

S.E. Cor. West Dr. Post

28" Maple

(Nashii) New

Nashii 6" Maple

Const.

G.R. Post

C.R. Rail Post

G.R. Post

9-15-59 R.R. Spk. Const. Curve

P.C. 451+96.69 Plan Const.

P.C. 451+46.69 Const.

P.K. Nail

31

9-15-59 R.R. Spk.

(No Curve)

P.I. 447+68.27 Survey

P.K. Nail

Found R.R. Spk on top Retied by Cronin's Crew 11/8/65

CONST. Tang.

Survey Tang.

Nashii 6" Spruce

9-15-59 R.R. Spk.

P.T. 445+54.79 Const

P.K. Nail

30

9-15-59 R.R. Spk.

(No Curve)

P.I. 442+14.82 Survey

P.K. Nail

(New) Nashii 4" Basswood

R.R.

9-15-59 R.R. Spk.

P.I. 442+14.82 Const.

P.K. Nail

Found R.R. Spk. on top Retied by Cronin's Crew 11/8/65

